

# Loudon County Commission Workshop

Loudon, Tennessee

Monday, April 21, 2025

Courthouse Annex

6:00 pm

## AGENDA

To provide public comment, prior to the start of the meeting please write your name on the sign-up sheet located on the podium for the Public Hearing

1) General Public Comments

(General Public is only allowed to speak on items germane to items on the agenda)  
T.C.A. § 8-44-112

2) Loudon County Codes Enforcement Director – Jim Jenkins

\*(Planning Commission - APPROVED or DISAPPROVED)

A) A RESOLUTION AMENDING THE ZONING MAP OF LOUDON COUNTY, TENNESSEE, PURSUANT TO CHAPTER SEVEN, §13-7-105 OF THE TENNESSEE CODE ANNOTATED, TO REZONE FROM A-2, RURAL RESIDENTIAL DISTRICT TO A-3, DEVELOPING AGRICULTURE DISTRICT. LOUDON COUNTY TAX MAP 058, PARCEL 052.00, LOCATED 1211 OLD HOLLOW RD, LOUDON COUNTY, TN, SITUATED IN THE 1<sup>ST</sup> LEGISLATIVE DISTRICT  
\*(APPROVED 9 / DISAPPROVED 0)

B) A RESOLUTION AMENDING THE ZONING MAP OF LOUDON COUNTY, TENNESSEE, PURSUANT TO CHAPTER SEVEN, §13-7-105 OF THE TENNESSEE CODE ANNOTATED, TO REZONE FROM M-1 GENERAL INDUSTRIAL DISTRICT TO R-1 SUBURBAN RESIDENTIAL DISTRICT. LOUDON COUNTY TAX MAP 026, PARCEL 084.01, LOCATED AT 3877 RIVERVIEW RD, LOUDON COUNTY, TN, SITUATED IN THE 5<sup>TH</sup> LEGISLATIVE DISTRICT  
\*(APPROVED 9 / DISAPPROVED 0)

- C) A RESOLUTION AMENDING THE ZONING MAP OF LOUDON COUNTY, TENNESSEE, PURSUANT TO CHAPTER SEVEN, §13-7-105 OF THE TENNESSEE CODE ANNOTATED, TO REZONE FROM C-2, GENERAL COMMERCIAL DISTRICT TO CFD, COMMUNITY FACILITIES DISTRICT. LOUDON COUNTY TAX MAP 019, PARCEL 118.04, LOCATED AT 14950 HOTCHKISS VALLEY RD, LOUDON COUNTY, TN, SITUATED IN THE 5<sup>TH</sup> LEGISLATIVE DISTRICT  
\*(APPROVED 9 / DISAPPROVED 0)
- D) A RESOLUTION AMENDING THE ZONING MAP OF LOUDON COUNTY, TENNESSEE, PURSUANT TO CHAPTER SEVEN, §13-7-105 OF THE TENNESSEE CODE ANNOTATED, TO REZONE FROM A-1, AGRICULTURE FORESTRY DISTRICT TO A-3, DEVELOPING AGRICULTURE DISTRICT. LOUDON COUNTY TAX MAP 003, PARCEL 044.00 LOCATED GRUBB RD, LOUDON COUNTY, TN, SITUATED IN THE 5<sup>TH</sup> LEGISLATIVE DISTRICT, APPROXIMATELY 1 ACRE ONLY  
\*(APPROVED 9 / DISAPPROVED 0)
- E) A RESOLUTION AMENDING THE ZONING MAP OF LOUDON COUNTY, TENNESSEE, PURSUANT TO CHAPTER SEVEN, §13-7-105 OF THE TENNESSEE CODE ANNOTATED, TO REZONE FROM A-1, AGRICULTURE FORESTRY DISTRICT TO A-2, RURAL RESIDENTIAL DISTRICT AND A-3, DEVELOPING AGRICULTURE DISTRICT. LOUDON COUNTY TAX MAP 035, PARCEL 024.00 LOCATED 3297 ANTICOH CHURCH RD, LOUDON COUNTY, TN, SITUATED IN THE 3<sup>RD</sup> LEGISLATIVE DISTRICT  
\*(APPROVED 9 / DISAPPROVED 0)
- F) A RESOLUTION AMENDING THE ZONING MAP OF LOUDON COUNTY, TENNESSEE, PURSUANT TO CHAPTER SEVEN, §13-7-105 OF THE TENNESSEE CODE ANNOTATED, TO REZONE FROM A-1, ARGICULTURE FORESTRY DISTRICT TO CFD COMMUNITY FACILITES DISTRICT, LOUDON COUNTY TAX MAP 006, PARCEL 174.01, LOCATED 9300 HICKORY CREEK RD, LOUDON COUNTY, TN, SITUATED IN THE 5<sup>TH</sup> LEGISLATIVE DISTRICT  
\*(APPROVED 9 / DISAPPROVED 0)

G) A RESOLUTION AMENDING THE ZONING MAP OF LOUDON COUNTY, TENNESSEE, PURSUANT TO CHAPTER SEVEN, §13-7-105 OF THE TENNESSEE CODE ANNOTATED, TO REZONE FROM A-1 AGRICULTURE FORESTRY DISTRICT TO A-2, RURAL RESIDENTIAL DISTRICT AND A-3, DEVELOPING AGRICULTURE DISTRICT. LOUDON COUNTY TAX MAP 067, PARCEL 094.00 LOCATED 22822 FORK CREEK RD, LOUDON COUNTY, TN, SITUATED IN THE 4<sup>TH</sup> LEGISLATIVE DISTRICT

\*(APPROVED 9 / DISAPPROVED 0)

H) A RESOLUTION AMENDING THE ZONING MAP OF LOUDON COUNTY, TENNESSEE, PURSUANT TO CHAPTER SEVEN, §13-7-105 OF THE TENNESSEE CODE ANNOTATED, TO REZONE FROM A-1, AGRICULTURE FORESTRY DISTRICT TO A-2, RURAL RESIDENTIAL DISTRICT LOUDON COUNTY TAX MAP 044, PARCEL 041.01 LOCATED 25588 HWY 321, LOUDON COUNTY, TN, SITUATED IN THE 3<sup>RD</sup> LEGISLATIVE DISTRICT

\*(APPROVED 9 / DISAPPROVED 0)

3) Commissioner Whitfield

A) Update on landfill for mud on the roads

B) EDA renewal discussion

4) Commissioner Waller

A) School Projects Updates

5) Director of Accounts and Budgets – Erin Rice

A) Budget Recommendations

RESOLUTION \_\_\_\_\_

**A RESOLUTION AMENDING THE ZONING MAP OF LOUDON COUNTY, TENNESSEE, PURSUANT TO CHAPTER SEVEN, §13-7-105 OF THE TENNESSEE CODE ANNOTATED, TO REZONE FROM A-2, RURAL RESIDENTIAL DISTRICT TO A-3, DEVELOPING AGRICULTURE DISTRICT. LOUDON COUNTY TAX MAP 058, PARCEL 052.00, LOCATED 1211 OLD HOLLOW RD, LOUDON COUNTY, TN, SITUATED IN THE 1<sup>ST</sup> LEGISLATIVE DISTRICT**

WHEREAS, the Loudon County Commission, in accordance with Chapter Seven, §13-7-105 of the Tennessee Code Annotated, may from time to time, amend the number, shape, boundary, area or any regulation of or within any district or districts, or any other provision of any zoning resolution, and

WHEREAS, the Regional Planning Commission has forwarded a recommendation regarding the amendment to the Zoning Map of Loudon County, Tennessee,

WHEREAS, a notice of public hearing and a description of the resolution appeared in, The Daily Edition on April 11, 2025 consistent with the provisions of Tennessee Code Annotated, §13-7-105, and

NOW, THEREFORE, BE IT RESOLVED by the Loudon County Commission that the Zoning Map of Loudon County, Tennessee be amended as follows:

Located 1211 Old Hollow Rd, situated in the 1<sup>st</sup> Legislative District, referenced by Tax Map 058, Parcel 052.00, to be rezoned from A-2 (Rural Residential District) to A-3 (Developing Agriculture District).

BE IT FINALLY RESOLVED, that this Resolution shall take effect immediately, the public welfare requiring it.

\_\_\_\_\_  
ATTEST

\_\_\_\_\_  
LOUDON COUNTY CHAIRMAN

DATE: \_\_\_\_\_

\_\_\_\_\_  
APPROVED: LOUDON COUNTY MAYOR

The votes on the question of approval of this Resolution by the Planning Commission are as follows:

APPROVED: 9

DISAPPROVED: 0

ABSTAINED: \_\_\_\_\_

*Rebecca L. McLow*  
ATTEST: SECRETARY LOUDON COUNTY  
REGIONAL PLANNING COMMISSION

Dated: 4/14/25

ILLUSTRATION ATTACHMENT

REZONE FROM A-2 (RURAL RESIDENTIAL DISTRICT)  
TO A-3 (DEVELOPING AGRICULTURE DISTRICT).  
REFERENCED BY LOUDON COUNTY TAX MAP 058, PARCEL 052.00  
LOCATED AT 1211 OLD HOLLOW RD,  
LOUDON COUNTY, TN, SITUATED IN THE  
1<sup>ST</sup> LEGISLATIVE DISTRICT



RESOLUTION \_\_\_\_\_

**A RESOLUTION AMENDING THE ZONING MAP OF LOUDON COUNTY, TENNESSEE, PURSUANT TO CHAPTER SEVEN, §13-7-105 OF THE TENNESSEE CODE ANNOTATED, TO REZONE FROM M-1 GENERAL INDUSTRIAL DISTRICT TO R-1 SUBURBAN RESIDENTIAL DISTRICT. LOUDON COUNTY TAX MAP 026, PARCEL 084.01, LOCATED AT 3877 RIVERVIEW RD, LOUDON COUNTY, TN, SITUATED IN THE 5<sup>TH</sup> LEGISLATIVE DISTRICT**

WHEREAS, the Loudon County Commission, in accordance with Chapter Seven, §13-7-105 of the Tennessee Code Annotated, may from time to time, amend the number, shape, boundary, area or any regulation of or within any district or districts, or any other provision of any zoning resolution, and

WHEREAS, the Regional Planning Commission has forwarded a recommendation regarding the amendment to the Zoning Map of Loudon County, Tennessee,

WHEREAS, a notice of public hearing and a description of the resolution appeared in, The Daily Edition on April 11, 2025 consistent with the provisions of Tennessee Code Annotated, §13-7-105, and

NOW, THEREFORE, BE IT RESOLVED by the Loudon County Commission that the Zoning Map of Loudon County, Tennessee be amended as follows:

Located at 3877 Riverview Rd, situated in the 5<sup>th</sup> Legislative District, referenced by Tax Map 026, Parcel 084.01, to be rezoned from M-1 (General Industrial District) to R-1 (Suburban Residential District)

BE IT FINALLY RESOLVED, that this Resolution shall take effect immediately, the public welfare requiring it.

\_\_\_\_\_  
ATTEST

\_\_\_\_\_  
LOUDON COUNTY CHAIRMAN

DATE: \_\_\_\_\_

\_\_\_\_\_  
APPROVED: LOUDON COUNTY MAYOR

The votes on the question of approval of this Resolution by the Planning Commission are as follows:

APPROVED: 9

DISAPPROVED: 0

ABSTAINED: \_\_\_\_\_

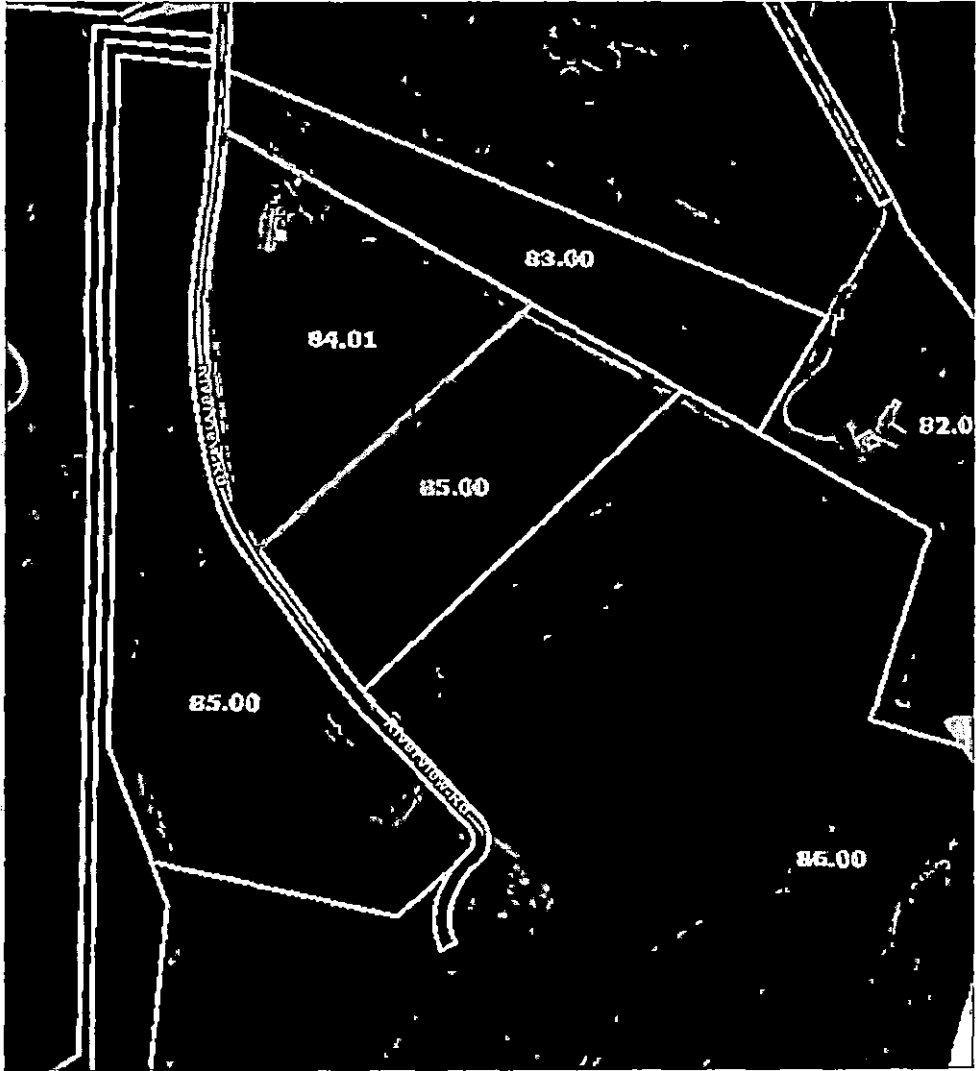
Paula G. McKen  
ATTEST: SECRETARY LOUDON COUNTY REGIONAL PLANNING COMMISSION

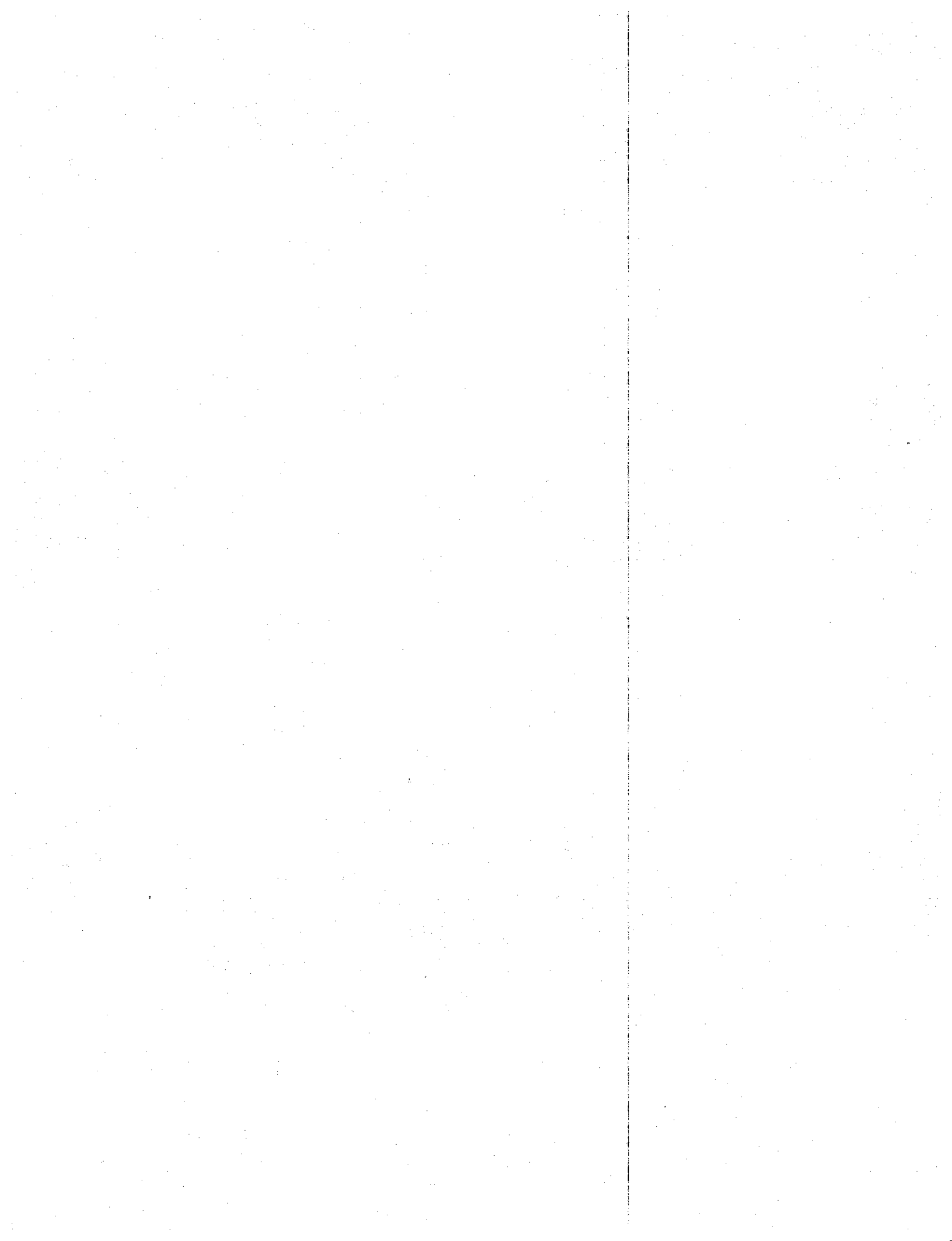
4/14/25

RESOLUTION NO. \_\_\_\_\_

ILLUSTRATION ATTACHMENT

REZONE FROM M-1 (GENERAL INDUSTRIAL DISTRICT)  
TO R-1 (SUBURBAN RESIDENTIAL DISTRICT).  
REFERENCED BY LOUDON COUNTY  
TAX MAP 026, PARCEL 084.01  
LOCATED 3877 RIVERVIEW RD, LOUDON COUNTY, TN  
SITUATED IN THE 5<sup>TH</sup> LEGISLATIVE DISTRICT







RESOLUTION \_\_\_\_\_

**A RESOLUTION AMENDING THE ZONING MAP OF LOUDON COUNTY, TENNESSEE, PURSUANT TO CHAPTER SEVEN, §13-7-105 OF THE TENNESSEE CODE ANNOTATED, TO REZONE FROM C-2, GENERAL COMMERCIAL DISTRICT TO CFD, COMMUNITY FACILITIES DISTRICT. LOUDON COUNTY TAX MAP 019, PARCEL 118.04, LOCATED AT 14950 HOTCHKISS VALLEY RD, LOUDON COUNTY, TN, SITUATED IN THE 5<sup>TH</sup> LEGISLATIVE DISTRICT**

WHEREAS, the Loudon County Commission, in accordance with Chapter Seven, §13-7-105 of the Tennessee Code Annotated, may from time to time, amend the number, shape, boundary, area or any regulation of or within any district or districts, or any other provision of any zoning resolution, and

WHEREAS, the Regional Planning Commission has forwarded a recommendation regarding the amendment to the Zoning Map of Loudon County, Tennessee,

WHEREAS, a notice of public hearing and a description of the resolution appeared in The Daily Edition on April 11, 2025 consistent with the provisions of Tennessee Code Annotated, §13-7-105, and

NOW, THEREFORE, BE IT RESOLVED by the Loudon County Commission that the Zoning Map of Loudon County, Tennessee be amended as follows:

Located at 14950 Hotchkiss Valley Rd, situated in the 5<sup>th</sup> Legislative District, referenced by Tax Map 019, Parcel 118.04, to be rezoned from C-2 (General Commercial District) to CFD (Community Facilities District)

BE IT FINALLY RESOLVED, that this Resolution shall take effect immediately, the public welfare requiring it.

\_\_\_\_\_  
ATTEST

\_\_\_\_\_  
LOUDON COUNTY CHAIRMAN

DATE: \_\_\_\_\_

\_\_\_\_\_  
APPROVED: LOUDON COUNTY MAYOR

The votes on the question of approval of this Resolution by the Planning Commission are as follows:

APPROVED: 9

DISAPPROVED: 0

ABSTAINED: \_\_\_\_\_

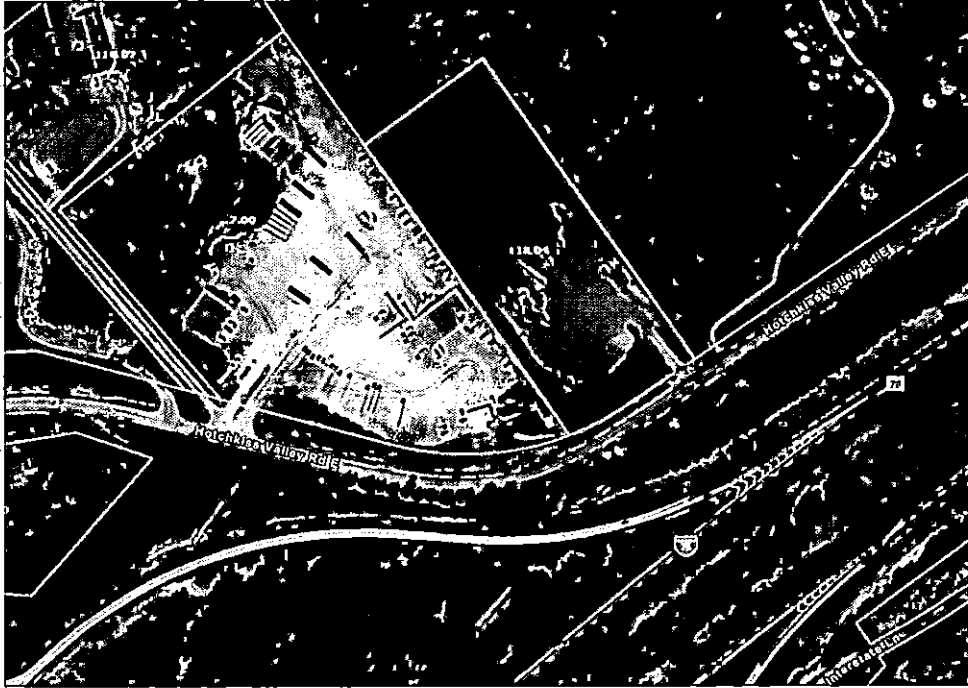
Pamela Y. McNew  
ATTEST: SECRETARY LOUDON COUNTY REGIONAL PLANNING COMMISSION

4/14/25

RESOLUTION NO. \_\_\_\_\_

ILLUSTRATION ATTACHMENT

REZONE FROM C-2 (GENERAL COMMERCIAL DISTRICT)  
TO CFD (COMMUNITIES FACILITES DISTRICT).  
REFERENCED BY LOUDON COUNTY  
TAX MAP 019, PARCEL 118.04  
LOCATED 14950 HOTCHKISS VALLEY RD, LOUDON COUNTY, TN  
SITUATED IN THE 5<sup>TH</sup> LEGISLATIVE DISTRICT



RESOLUTION \_\_\_\_\_

**A RESOLUTION AMENDING THE ZONING MAP OF LOUDON COUNTY, TENNESSEE,  
PURSUANT TO CHAPTER SEVEN, §13-7-105 OF THE TENNESSEE CODE ANNOTATED,  
TO REZONE FROM A-1, AGRICULTURE FORESTRY DISTRICT TO  
A-3, DEVELOPING AGRICULTURE DISTRICT.  
LOUDON COUNTY TAX MAP 003, PARCEL 044.00  
LOCATED GRUBB RD, LOUDON COUNTY, TN,  
SITUATED IN THE 5<sup>TH</sup> LEGISLATIVE DISTRICT, APPROXIMATELY 1 ACRE ONLY**

WHEREAS, the Loudon County Commission, in accordance with Chapter Seven, §13-7-105 of the Tennessee Code Annotated, may from time to time, amend the number, shape, boundary, area or any regulation of or within any district or districts, or any other provision of any zoning resolution, and

WHEREAS, the Regional Planning Commission has forwarded a recommendation regarding the amendment to the Zoning Map of Loudon County, Tennessee,

WHEREAS, a notice of public hearing and a description of the resolution appeared in, The Daily Edition on April 11, 2025 consistent with the provisions of Tennessee Code Annotated, §13-7-105, and

**NOW, THEREFORE, BE IT RESOLVED** by the Loudon County Commission that the Zoning Map of Loudon County, Tennessee be amended as follows:

Located Grubb Rd, situated in the 5<sup>th</sup> Legislative District, referenced by Tax Map 003, Parcel 044.00 to be rezoned from A-1 (Agriculture Forestry District) to A-3 (Developing Agriculture District). Approximately 1 acre only

**BE IT FINALLY RESOLVED**, that this Resolution shall take effect immediately, the public welfare requiring it.

\_\_\_\_\_  
ATTEST

\_\_\_\_\_  
LOUDON COUNTY CHAIRMAN

DATE: \_\_\_\_\_

\_\_\_\_\_  
APPROVED: LOUDON COUNTY MAYOR

The votes on the question of approval of this Resolution by the Planning Commission are as follows:

APPROVED: 9

DISAPPROVED: 0

ABSTAINED: \_\_\_\_\_

*Pamela G. McNew*  
ATTEST: SECRETARY LOUDON COUNTY  
REGIONAL PLANNING COMMISSION

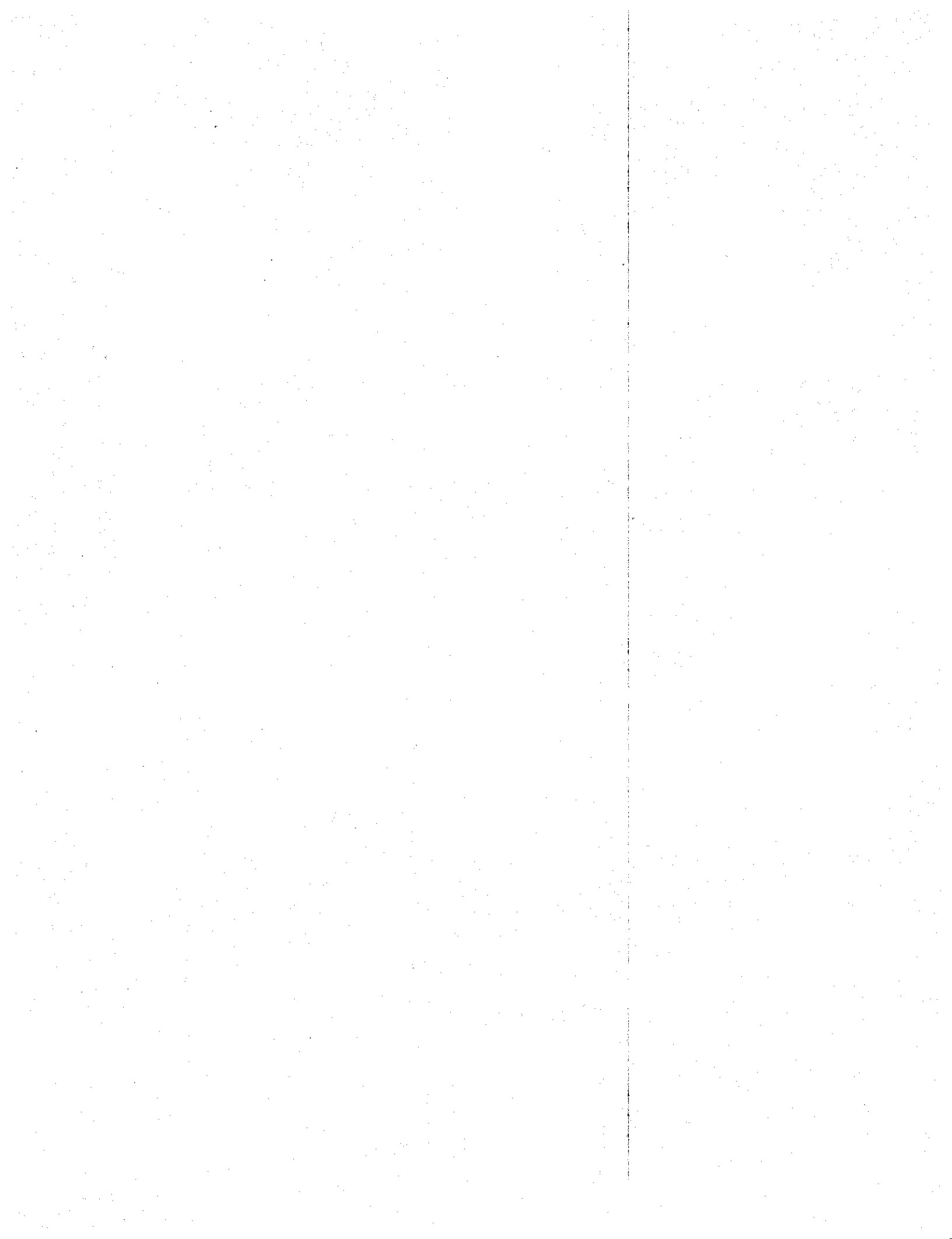
Dated: 4/14/25

RESOLUTION NO. \_\_\_\_\_

ILLUSTRATION ATTACHMENT

REZONE FROM A-1 (AGRICULTURE FORESTRY DISTRICT)  
TO A-3 (DEVELOPING AGRICULTURE DISTRICT).  
REFERENCED BY LOUDON COUNTY TAX MAP 003, PARCEL 044.00  
LOCATED AT GRUBB RD  
LOUDON COUNTY, TN, SITUATED IN THE  
5<sup>TH</sup> LEGISLATIVE DISTRICT





RESOLUTION \_\_\_\_\_

**A RESOLUTION AMENDING THE ZONING MAP OF LOUDON COUNTY, TENNESSEE, PURSUANT TO CHAPTER SEVEN, §13-7-105 OF THE TENNESSEE CODE ANNOTATED, TO REZONE FROM A-1, AGRICULTURE FORESTRY DISTRICT TO A-2, RURAL RESIDENTIAL DISTRICT AND A-3, DEVELOPING AGRICULTURE DISTRICT. LOUDON COUNTY TAX MAP 035, PARCEL 024.00 LOCATED 3297 ANTICOH CHURCH RD, LOUDON COUNTY, TN, SITUATED IN THE 3<sup>RD</sup> LEGISLATIVE DISTRICT**

WHEREAS, the Loudon County Commission, in accordance with Chapter Seven, §13-7-105 of the Tennessee Code Annotated, may from time to time, amend the number, shape, boundary, area or any regulation of or within any district or districts, or any other provision of any zoning resolution, and

WHEREAS, the Regional Planning Commission has forwarded a recommendation regarding the amendment to the Zoning Map of Loudon County, Tennessee,

WHEREAS, a notice of public hearing and a description of the resolution appeared in, The Daily Edition on April 11, 2025 consistent with the provisions of Tennessee Code Annotated, §13-7-105, and

NOW, THEREFORE, BE IT RESOLVED by the Loudon County Commission that the Zoning Map of Loudon County, Tennessee be amended as follows:

Located 3297 Antioch Church Rd, situated in the 3<sup>rd</sup> Legislative District, referenced by Tax Map 035, Parcel 024.00 to be rezoned from A-1 (Agriculture Forestry District) to A-2 (Rural Residential District) and A-3 (Developing Agriculture District).

BE IT FINALLY RESOLVED, that this Resolution shall take effect immediately, the public welfare requiring it.

\_\_\_\_\_  
ATTEST

\_\_\_\_\_  
LOUDON COUNTY CHAIRMAN

DATE: \_\_\_\_\_

\_\_\_\_\_  
APPROVED: LOUDON COUNTY MAYOR

The votes on the question of approval of this Resolution by the Planning Commission are as follows:

APPROVED: 9

DISAPPROVED: 0

ABSTAINED: \_\_\_\_\_

*Paucela G. McNew*  
ATTEST: SECRETARY LOUDON COUNTY  
REGIONAL PLANNING COMMISSION

Dated: 4/14/25

RESOLUTION NO. \_\_\_\_\_

ILLUSTRATION ATTACHMENT

REZONE FROM A-1 (AGRICULTURE FORESTRY DISTRICT)  
TO A-2 (RURAL RESIDENTIAL DISTRICT) AND  
A-3 (DEVELOPING AGRICULTURE DISTRICT).  
REFERENCED BY LOUDON COUNTY TAX MAP 035, PARCEL 024.00  
LOCATED AT 3297 ANTIOCH CHURCH RD  
LOUDON COUNTY, TN, SITUATED IN THE  
3<sup>RD</sup> LEGISLATIVE DISTRICT







RESOLUTION \_\_\_\_\_

**A RESOLUTION AMENDING THE ZONING MAP OF LOUDON COUNTY, TENNESSEE, PURSUANT TO CHAPTER SEVEN, §13-7-105 OF THE TENNESSEE CODE ANNOTATED, TO REZONE FROM A-1, AGRICULTURE FORESTRY DISTRICT TO CFD COMMUNITY FACILITIES DISTRICT, LOUDON COUNTY TAX MAP 006, PARCEL 174.01, LOCATED 9300 HICKORY CREEK RD, LOUDON COUNTY, TN, SITUATED IN THE 5TH LEGISLATIVE DISTRICT,**

WHEREAS, the Loudon County Commission, in accordance with Chapter Seven, §13-7-105 of the Tennessee Code Annotated, may from time to time, amend the number, shape, boundary, area or any regulation of or within any district or districts, or any other provision of any zoning resolution, and

WHEREAS, the Regional Planning Commission has forwarded a recommendation regarding the amendment to the Zoning Map of Loudon County, Tennessee,

WHEREAS, a notice of public hearing and a description of the resolution appeared in, The Daily Edition on April 11, 2025 consistent with the provisions of Tennessee Code Annotated, §13-7-105, and

NOW, THEREFORE, BE IT RESOLVED by the Loudon County Commission that the Zoning Map of Loudon County, Tennessee be amended as follows:

Located 9300 Hickory Creek Rd, situated in the 5<sup>th</sup> Legislative District, referenced by Tax Map 006, Parcel 174.01, to be rezoned from A-1 (Agriculture Forestry District) to CFD (Community Facility District)

BE IT FINALLY RESOLVED, that this Resolution shall take effect immediately, the public welfare requiring it.

\_\_\_\_\_  
ATTEST

\_\_\_\_\_  
LOUDON COUNTY CHAIRMAN

DATE: \_\_\_\_\_

\_\_\_\_\_  
APPROVED: LOUDON COUNTY MAYOR

The votes on the question of approval of this Resolution by the Planning Commission are as follows:

APPROVED: 9

DISAPPROVED: 0

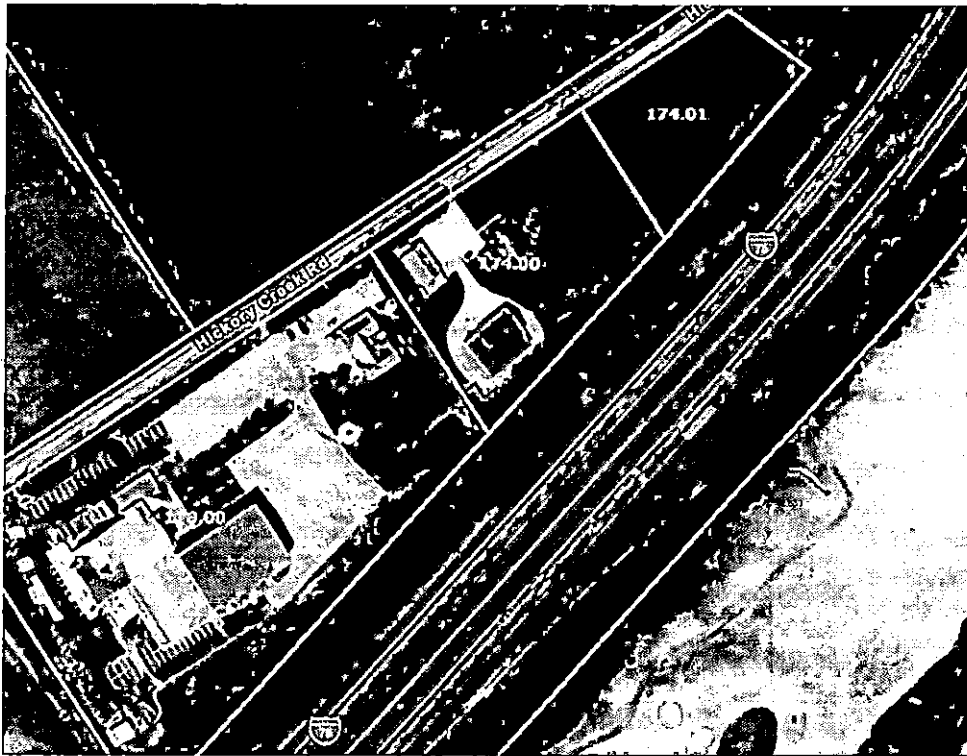
ABSTAINED: \_\_\_\_\_

Pamela G. McLean  
ATTEST: SECRETARY LOUDON COUNTY  
REGIONAL PLANNING COMMISSION

4/14/25

ILLUSTRATION ATTACHMENT

REZONE FROM A-1 (AGRICULTURE FORESTRY DISTRICT)  
TO CFD (COMMUNITY FACILITY DISTRICT)  
REFERENCED BY LOUDON COUNTY TAX MAP 006, PARCEL 174.01  
LOCATED AT 9300 HICKORY CREEK RD, LOUDON COUNTY, TN,  
SITUATED IN THE 5<sup>TH</sup> LEGISLATIVE DISTRICT



RESOLUTION \_\_\_\_\_

**A RESOLUTION AMENDING THE ZONING MAP OF LOUDON COUNTY, TENNESSEE, PURSUANT TO CHAPTER SEVEN, §13-7-105 OF THE TENNESSEE CODE ANNOTATED, TO REZONE FROM A-1, AGRICULTURE FORESTRY DISTRICT TO A-2, RURAL RESIDENTIAL DISTRICT AND A-3, DEVELOPING AGRICULTURE DISTRICT. LOUDON COUNTY TAX MAP 067, PARCEL 094.00, LOCATED 22822 FORK CREEK RD, LOUDON COUNTY, TN, SITUATED IN THE 4<sup>TH</sup> LEGISLATIVE DISTRICT**

WHEREAS, the Loudon County Commission, in accordance with Chapter Seven, §13-7-105 of the Tennessee Code Annotated, may from time to time, amend the number, shape, boundary, area or any regulation of or within any district or districts, or any other provision of any zoning resolution, and

WHEREAS, the Regional Planning Commission has forwarded a recommendation regarding the amendment to the Zoning Map of Loudon County, Tennessee,

WHEREAS, a notice of public hearing and a description of the resolution appeared in, The Daily Edition on April 11, 2025 consistent with the provisions of Tennessee Code Annotated, §13-7-105, and

NOW, THEREFORE, BE IT RESOLVED by the Loudon County Commission that the Zoning Map of Loudon County, Tennessee be amended as follows:

Located 22822 Fork Creek Rd, situated in the 4<sup>th</sup> Legislative District, referenced by Tax Map 067, Parcel 094.00 to be rezoned from A-1 (Agriculture Forestry District) to A-2 (Rural Residential District) and A-3 (Developing Agriculture District).

BE IT FINALLY RESOLVED, that this Resolution shall take effect immediately, the public welfare requiring it.

\_\_\_\_\_  
ATTEST

\_\_\_\_\_  
LOUDON COUNTY CHAIRMAN

DATE: \_\_\_\_\_

\_\_\_\_\_  
APPROVED: LOUDON COUNTY MAYOR

The votes on the question of approval of this Resolution by the Planning Commission are as follows:

APPROVED: 9

DISAPPROVED: 0

ABSTAINED: \_\_\_\_\_

*Pamela G. McLea*  
ATTEST: SECRETARY LOUDON COUNTY  
REGIONAL PLANNING COMMISSION  
Dated: 4/14/25

RESOLUTION NO. \_\_\_\_\_

ILLUSTRATION ATTACHMENT

REZONE FROM A-1 (AGRICULTURE FORESTRY DISTRICT)  
TO A-2 (RURAL RESIDENTIAL DISTRICT) AND  
A-3 (DEVELOPING AGRICULTURE DISTRICT).  
REFERENCED BY LOUDON COUNTY TAX MAP 067, PARCEL 094.00  
LOCATED AT 22822 FORK CREEK RD  
LOUDON COUNTY, TN, SITUATED IN THE  
4<sup>TH</sup> LEGISLATIVE DISTRICT



RESOLUTION \_\_\_\_\_

**A RESOLUTION AMENDING THE ZONING MAP OF LOUDON COUNTY, TENNESSEE,  
PURSUANT TO CHAPTER SEVEN, §13-7-105 OF THE TENNESSEE CODE ANNOTATED,  
TO REZONE FROM A-1, AGRICULTURE FORESTRY DISTRICT TO  
A-2, RURAL RESIDENTIAL DISTRICT  
LOUDON COUNTY TAX MAP 044, PARCEL 041.01  
LOCATED 25588 HWY 321, LOUDON COUNTY, TN,  
SITUATED IN THE 3<sup>RD</sup> LEGISLATIVE DISTRICT**

WHEREAS, the Loudon County Commission, in accordance with Chapter Seven, §13-7-105 of the Tennessee Code Annotated, may from time to time, amend the number, shape, boundary, area or any regulation of or within any district or districts, or any other provision of any zoning resolution, and

WHEREAS, the Regional Planning Commission has forwarded a recommendation regarding the amendment to the Zoning Map of Loudon County, Tennessee,

WHEREAS, a notice of public hearing and a description of the resolution appeared in, The Daily Edition on April 11, 2025 consistent with the provisions of Tennessee Code Annotated, §13-7-105, and

NOW, THEREFORE, BE IT RESOLVED by the Loudon County Commission that the Zoning Map of Loudon County, Tennessee be amended as follows:

Located 25588 Hwy 321, situated in the 3<sup>rd</sup> Legislative District, referenced by Tax Map 044, Parcel 041.01, to be rezoned from A-1 (Agriculture Forestry District) to A-2 (Rural Residential District)

BE IT FINALLY RESOLVED, that this Resolution shall take effect immediately, the public welfare requiring it.

\_\_\_\_\_  
ATTEST

\_\_\_\_\_  
LOUDON COUNTY CHAIRMAN

DATE: \_\_\_\_\_

\_\_\_\_\_  
APPROVED: LOUDON COUNTY MAYOR

The votes on the question of approval of this Resolution by the Planning Commission are as follows:

APPROVED: 9

DISAPPROVED: 0

ABSTAINED: \_\_\_\_\_

Pamela G. McNew  
ATTEST: SECRETARY LOUDON COUNTY  
REGIONAL PLANNING COMMISSION

Dated: 4/14/25

RESOLUTION NO. \_\_\_\_\_

ILLUSTRATION ATTACHMENT

REZONE FROM A-1 (AGRICULTURE FORESTRY DISTRICT)  
TO A-2 (RURAL RESIDENTIAL DISTRICT)  
REFERENCED BY LOUDON COUNTY TAX MAP 044, PARCEL 041.01  
LOCATED AT 25588 HWY 321, LOUDON COUNTY, TN,  
SITUATED IN THE 3<sup>RD</sup> LEGISLATIVE DISTRICT

