

Loudon County Commission Workshop

Loudon, Tennessee

Monday, November 18, 2024

Courthouse Annex

6:00 pm

AGENDA

To provide public comment, prior to the start of the meeting please write your name on the sign-up sheet located on the podium for the Public Hearing

- 1) Comments by Members of the General Public
- 2) Loudon County Codes Enforcement Director – Jim Jenkins
 - A) A RESOLUTION AMENDING THE ZONING MAP OF LOUDON COUNTY, TENNESSEE, PURSUANT TO CHAPTER SEVEN, §13-7-105 OF THE TENNESSEE CODE ANNOTATED, TO REZONE FROM A-1, AGRICULTURE FORESTRY DISTRICT TO A-3, DEVELOPING AGRICULTURE DISTRICT. LOUDON COUNTY TAX MAP 039, PARCEL 121.00 LOCATED 10792 PROSPECT CHURCH RD, LOUDON COUNTY, TN, SITUATED IN THE 4TH LEGISLATIVE DISTRICT, APPROXIMATELY 1.37 ACRES ONLY
 - B) A RESOLUTION AMENDING THE ZONING MAP OF LOUDON COUNTY, TENNESSEE, PURSUANT TO CHAPTER SEVEN, §13-7-105 OF THE TENNESSEE CODE ANNOTATED, TO REZONE FROM A-1, AGRICULTURE FORESTRY DISTRICT TO A-3, DEVELOPING AGRICULTURE DISTRICT. APPROXIMATELY 1 ACRE ONLY LOUDON COUNTY TAX MAP 043, PARCEL 031.00 LOCATED 2424 FAIRVIEW RD, LOUDON COUNTY, TN, SITUATED IN THE 3RD LEGISLATIVE DISTRICT
 - C) A RESOLUTION AMENDING THE ZONING MAP OF LOUDON COUNTY, TENNESSEE, PURSUANT TO CHAPTER SEVEN, §13-7-105 OF THE TENNESSEE CODE ANNOTATED, TO REZONE FROM A-2, RURAL RESIDENTIAL DISTRICT TO R-1 SUBURBAN RESIDENTIAL DISTRICT, LOUDON COUNTY TAX MAP 035, PARCEL 051.00 LOCATED 15051 HWY 321 SOUTH, LOUDON COUNTY, TN, SITUATED IN THE 3RD LEGISLATIVE DISTRICT

D) A RESOLUTION AMENDING THE ZONING MAP OF LOUDON COUNTY, TENNESSEE, PURSUANT TO CHAPTER SEVEN, §13-7-105 OF THE TENNESSEE CODE ANNOTATED, TO REZONE FROM A-1 AGRICULTURE FORESTRY DISTRICT TO A-2, RURAL RESIDENTIAL DISTRICT & A-3, DEVELOPING AGRICULTURE DISTRICT. LOUDON COUNTY TAX MAP 018, PARCEL 069.00 LOCATED 4247 PINE GROVE PROVIDENCE RD, LOUDON COUNTY, TN, SITUATED IN THE 5TH LEGISLATIVE DISTRICT

E) A RESOLUTION AMENDING THE ZONING MAP OF LOUDON COUNTY, TENNESSEE, PURSUANT TO CHAPTER SEVEN, §13-7-105 OF THE TENNESSEE CODE ANNOTATED, TO REZONE FROM A-2/F-1, RURAL RESIDENTIAL DISTRICT, FLOODWAY DISTRICT TO A-3, DEVELOPING AGRICULTURE DISTRICT, F-1 FLOODWAY DISTRICT. LOUDON COUNTY TAX MAP 017, PARCEL 089.00 LOCATED 2028 WILKERSON RD, LOUDON COUNTY, TN, SITUATED IN THE 6TH LEGISLATIVE DISTRICT

3) Mayor - Buddy Bradshaw

A) Solid Waste Appointment - Dianah Mullis

B) Boards & Committee

- 1) Agriculture Extension Committee / Beth Snipes renew / 2 year term / September 2026 new expiration date
- 2) ADD HOC Planning - Van Shaver & Adam Waller renew / 1 year term / November 2025 new expiration date
- 3) Chamber of Commerce Board of Directors / Rosemary Quillen / 1 year term / December 2025 new expiration date

4) Loudon County Purchasing - Matt Kleinschmidt

A) Copy Machine lease for Clerk's Office / 60 Month / \$ 142.24 per month (Lenoir City Location)

B) Postage machine lease for County Office Building / 60 month / \$ 248.78 per month

C) Renewal for Priority Ambulance for ambulance services / 5 year term

5) Commissioner - Bill Geames

A) Purchase of Mobile Repeaters for county departments from ARPA funds

6) Commissioner - Van Shaver

A) Discussion of traffic issues caused by interstate backups

7) Director of Accounts and Budgets - Erin Rice

A) Budget Recommendations

RESOLUTION _____

DRAFT

**A RESOLUTION AMENDING THE ZONING MAP OF LOUDON COUNTY,
TENNESSEE, PURSUANT TO CHAPTER SEVEN, §13-7-105 OF THE
TENNESSEE CODE ANNOTATED, TO REZONE FROM A-1, AGRICULTURE
FORESTRY DISTRICT TO A-3, DEVELOPING AGRICULTURE DISTRICT.
LOUDON COUNTY TAX MAP 039, PARCEL 121.00
LOCATED 10792 PROSPECT CHURCH RD, LOUDON COUNTY, TN,
SITUATED IN THE 4TH LEGISLATIVE DISTRICT,
APPROXIMATELY 1.37 ACRES ONLY**

WHEREAS, the Loudon County Commission, in accordance with Chapter Seven, §13-7-105 of the Tennessee Code Annotated, may from time to time, amend the number, shape, boundary, area or any regulation of or within any district or districts, or any other provision of any zoning resolution, and

WHEREAS, the Regional Planning Commission has forwarded a recommendation regarding the amendment to the Zoning Map of Loudon County, Tennessee,

WHEREAS, a notice of public hearing and a description of the resolution appeared in, The Daily Edition on July 12, 2024 consistent with the provisions of Tennessee Code Annotated, §13-7-105, and

NOW, THEREFORE, BE IT RESOLVED by the Loudon County Commission that the Zoning Map of Loudon County, Tennessee be amended as follows:

Located 10792 Prospect Church Rd, situated in the 4th Legislative District, referenced by Tax Map 039, Parcel 121.00 to be rezoned from A-1 (Agriculture Forestry District) to A-3 (Developing Agriculture District). Approximately 1.37 acres only

BE IT FINALLY RESOLVED, that this Resolution shall take effect immediately, the public welfare requiring it.

ATTEST

LOUDON COUNTY CHAIRMAN

DATE: _____

APPROVED: LOUDON COUNTY MAYOR

The votes on the question of approval of this Resolution by the Planning Commission are as follows:

APPROVED: _____

DISAPPROVED: _____

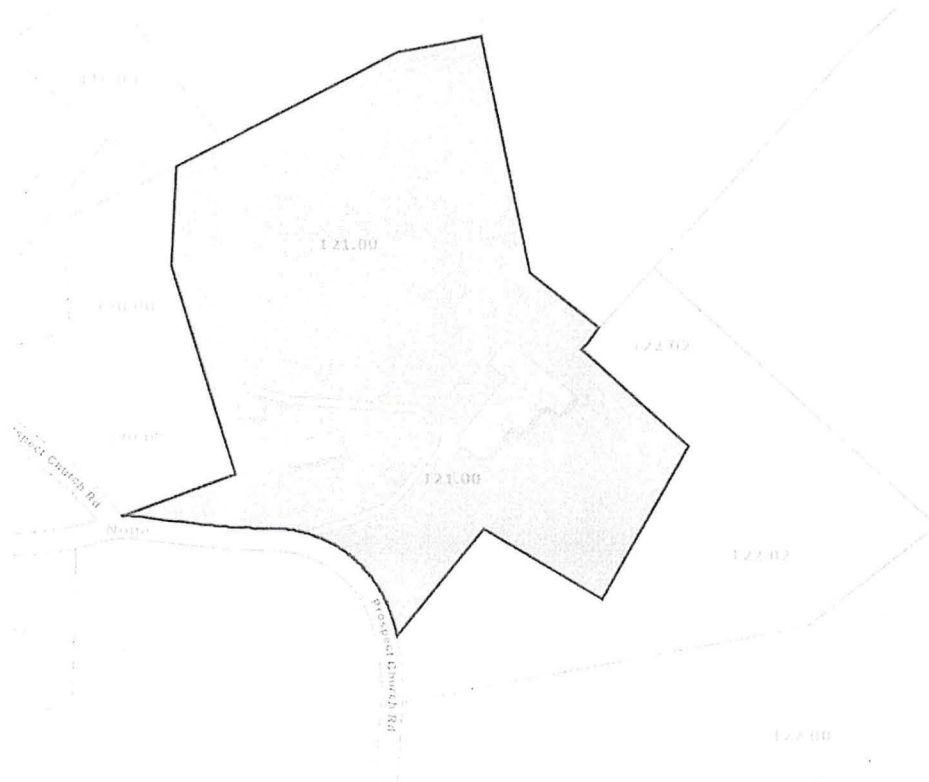
ABSTAINED: _____

**ATTEST: SECRETARY LOUDON COUNTY
REGIONAL PLANNING COMMISSION**
Dated:

RESOLUTION NO. _____

ILLUSTRATION ATTACHMENT

REZONE FROM A-1 (AGRICULTURE FORESTRY DISTRICT)
TO A-3 (DEVELOPING AGRICULTURE DISTRICT).
REFERENCED BY LOUDON COUNTY TAX MAP 039, PARCEL 121.00
LOCATED AT 10792 PROSPECT CHURCH RD
LOUDON COUNTY, TN, SITUATED IN THE
4TH LEGISLATIVE DISTRICT



RESOLUTION _____

DRAFT

**A RESOLUTION AMENDING THE ZONING MAP OF LOUDON COUNTY,
TENNESSEE, PURSUANT TO CHAPTER SEVEN, §13-7-105 OF THE
TENNESSEE CODE ANNOTATED, TO REZONE FROM A-1, AGRICULTURE
FORESTRY DISTRICT TO A-3, DEVELOPING AGRICULTURE DISTRICT.**

APPROXIMATELY 1 ACRE ONLY

LOUDON COUNTY TAX MAP 043, PARCEL 031.00

LOCATED 2424 FAIRVIEW RD, LOUDON COUNTY, TN,

SITUATED IN THE 3RD LEGISLATIVE DISTRICT

WHEREAS, the Loudon County Commission, in accordance with Chapter Seven, §13-7-105 of the Tennessee Code Annotated, may from time to time, amend the number, shape, boundary, area or any regulation of or within any district or districts, or any other provision of any zoning resolution, and

WHEREAS, the Regional Planning Commission has forwarded a recommendation regarding the amendment to the Zoning Map of Loudon County, Tennessee,

WHEREAS, a notice of public hearing and a description of the resolution appeared in, The Daily Edition on July 12, 2024 consistent with the provisions of Tennessee Code Annotated, §13-7-105, and

NOW, THEREFORE, BE IT RESOLVED by the Loudon County Commission that the Zoning Map of Loudon County, Tennessee be amended as follows:

Located 2424 Fairview Rd, situated in the 3rd Legislative District, referenced by Tax Map 043, Parcel 031.00 to be rezoned from A-1 (Agriculture Forestry District) to A-3 (Developing Agriculture District).
Approximately 1 acre only

BE IT FINALLY RESOLVED, that this Resolution shall take effect immediately, the public welfare requiring it.

ATTEST

LOUDON COUNTY CHAIRMAN

DATE: _____

APPROVED: LOUDON COUNTY MAYOR

The votes on the question of approval of this Resolution by the Planning Commission are as follows:

APPROVED: _____

DISAPPROVED: _____

ABSTAINED: _____

**ATTEST: SECRETARY LOUDON COUNTY
REGIONAL PLANNING COMMISSION**
Dated:

ILLUSTRATION ATTACHMENT

[illegible]

RESOLUTION _____

DRAFT

**A RESOLUTION AMENDING THE ZONING MAP OF LOUDON COUNTY,
TENNESSEE, PURSUANT TO CHAPTER SEVEN, §13-7-105 OF THE
TENNESSEE CODE ANNOTATED, TO REZONE FROM A-2, RURAL
RESIDENTIAL DISTRICT TO R-1 SUBURBAN RESIDENTIAL DISTRICT,
LOUDON COUNTY TAX MAP 035, PARCEL 051.00
LOCATED 15051 HWY 321 SOUTH, LOUDON COUNTY, TN,
SITUATED IN THE 3RD LEGISLATIVE DISTRICT**

WHEREAS, the Loudon County Commission, in accordance with Chapter Seven, §13-7-105 of the Tennessee Code Annotated, may from time to time, amend the number, shape, boundary, area or any regulation of or within any district or districts, or any other provision of any zoning resolution, and

WHEREAS, the Regional Planning Commission has forwarded a recommendation regarding the amendment to the Zoning Map of Loudon County, Tennessee,

WHEREAS, a notice of public hearing and a description of the resolution appeared in, The Daily Edition on August 16, 2024 consistent with the provisions of Tennessee Code Annotated, §13-7-105, and

NOW, THEREFORE, BE IT RESOLVED by the Loudon County Commission that the Zoning Map of Loudon County, Tennessee be amended as follows:

Located 15051 Hwy 321 South, situated in the 3rd Legislative District, referenced by Tax Map 035, Parcel 051.00 to be rezoned from A-2 (Rural Residential District) to R-1 (Suburban Residential District)

BE IT FINALLY RESOLVED, that this Resolution shall take effect immediately, the public welfare requiring it.

ATTEST

LOUDON COUNTY CHAIRMAN

DATE: _____

APPROVED: LOUDON COUNTY MAYOR

The votes on the question of approval of this Resolution by the Planning Commission are as follows:

APPROVED: _____

DISAPPROVED: _____

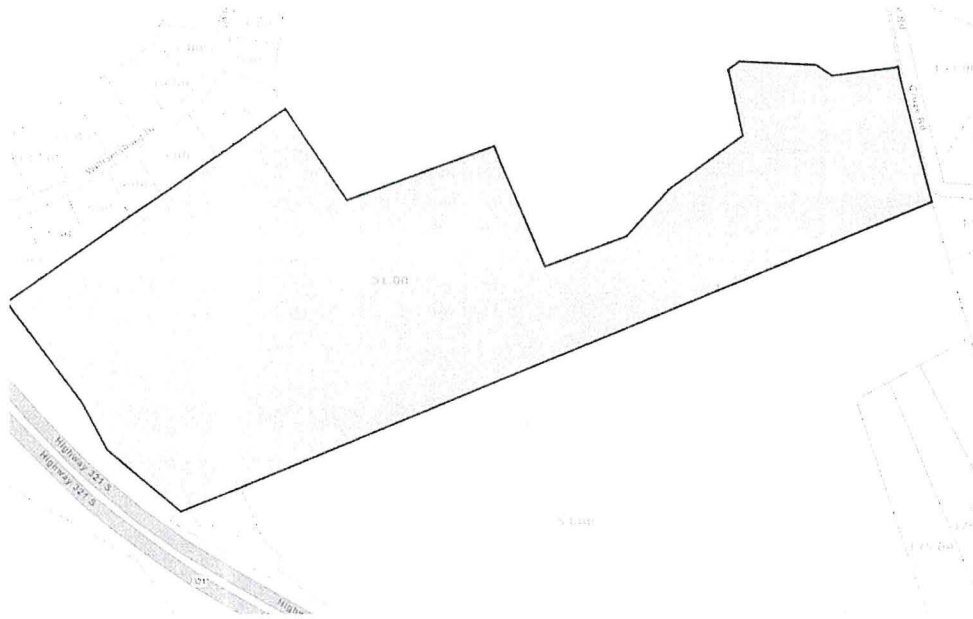
ABSTAINED: _____

**ATTEST: SECRETARY LOUDON COUNTY
REGIONAL PLANNING COMMISSION**
Dated:

RESOLUTION NO. _____

ILLUSTRATION ATTACHMENT

REZONE FROM A-2 (RURAL RESIDENTIAL DISTRICT)
TO R-1 (SUBURBAN RESIDENTIAL DISTRICT).
REFERENCED BY LOUDON COUNTY TAX MAP 035, PARCEL 051.00
LOCATED AT 15101 HWY 321 SOUTH,
LOUDON COUNTY, TN, SITUATED IN THE
3RD LEGISLATIVE DISTRICT



RESOLUTION _____

DRAFT

A RESOLUTION AMENDING THE ZONING MAP OF LOUDON COUNTY, TENNESSEE, PURSUANT TO CHAPTER SEVEN, §13-7-105 OF THE TENNESSEE CODE ANNOTATED, TO REZONE FROM A-1 AGRICULTURE FORESTRY DISTRICT TO A-2, RURAL RESIDENTIAL DISTRICT & A-3, DEVELOPING AGRICULTURE DISTRICT. LOUDON COUNTY TAX MAP 018, PARCEL 069.00 LOCATED 4247 PINE GROVE PROVIDENCE RD, LOUDON COUNTY, TN, SITUATED IN THE 5TH LEGISLATIVE DISTRICT

WHEREAS, the Loudon County Commission, in accordance with Chapter Seven, §13-7-105 of the Tennessee Code Annotated, may from time to time, amend the number, shape, boundary, area or any regulation of or within any district or districts, or any other provision of any zoning resolution, and

WHEREAS, the Regional Planning Commission has forwarded a recommendation regarding the amendment to the Zoning Map of Loudon County, Tennessee,

WHEREAS, a notice of public hearing and a description of the resolution appeared in, The Daily Edition on August 16, 2024 consistent with the provisions of Tennessee Code Annotated, §13-7-105, and

NOW, THEREFORE, BE IT RESOLVED by the Loudon County Commission that the Zoning Map of Loudon County, Tennessee be amended as follows:

Located 4247 Pine Grove Providence Rd, situated in the 5th Legislative District, referenced by Tax Map 018, Parcel 069.00 to be rezoned from A-1 (Agriculture Forestry District) to A-2 (Rural Residential District) & to A-3 (Developing Agriculture District).

BE IT FINALLY RESOLVED, that this Resolution shall take effect immediately, the public welfare requiring it.

ATTEST

LOUDON COUNTY CHAIRMAN

DATE: _____

APPROVED: LOUDON COUNTY MAYOR

The votes on the question of approval of this Resolution by the Planning Commission are as follows:

APPROVED: _____

DISAPPROVED: _____

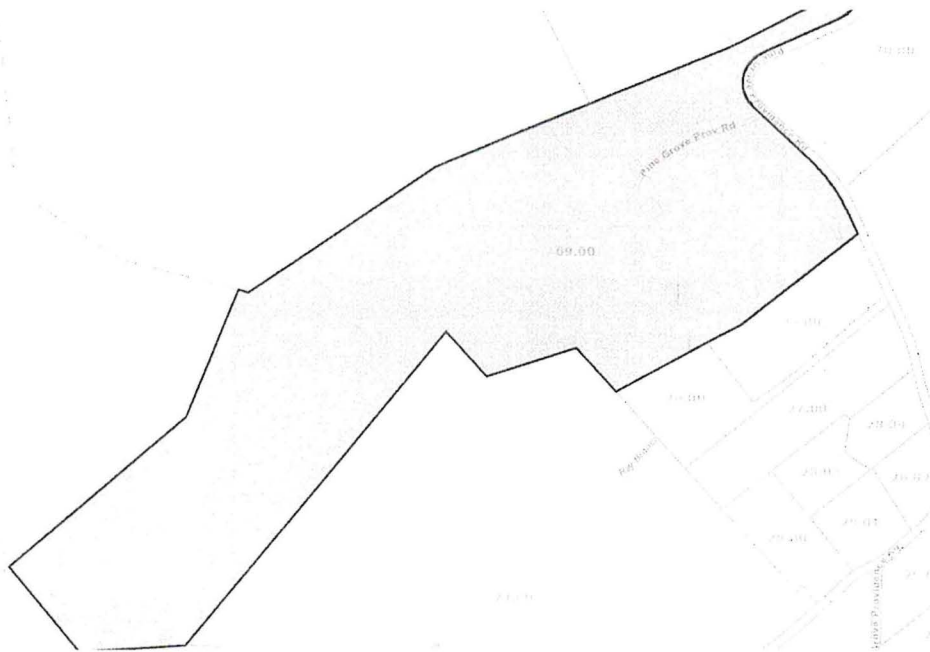
ABSTAINED: _____

**ATTEST: SECRETARY LOUDON COUNTY
REGIONAL PLANNING COMMISSION**
Dated:

RESOLUTION NO. _____

ILLUSTRATION ATTACHMENT

REZONE FROM A-1 (AGRICULTURE FORESTRY DISTRICT
A-2 (RURAL RESIDENTIAL DISTRICT) &
TO A-3 (DEVELOPING AGRICULTURE DISTRICT).
REFERENCED BY LOUDON COUNTY TAX MAP 018, PARCEL 069.00
LOCATED AT 4247 PINE GROVE PROVIDENCE RD,
LOUDON COUNTY, TN, SITUATED IN THE
5TH LEGISLATIVE DISTRICT



RESOLUTION _____

DRAFT

**A RESOLUTION AMENDING THE ZONING MAP OF LOUDON COUNTY, TENNESSEE, PURSUANT TO CHAPTER SEVEN, §13-7-105 OF THE TENNESSEE CODE ANNOTATED, TO REZONE FROM A-2/F-1, RURAL RESIDENTIAL DISTRICT, FLOODWAY DISTRICT TO A-3, DEVELOPING AGRICULTURE DISTRICT, F-1 FLOODWAY DISTRICT.
LOUDON COUNTY TAX MAP 017, PARCEL 089.00
LOCATED 2028 WILKERSON RD, LOUDON COUNTY, TN,
SITUATED IN THE 6TH LEGISLATIVE DISTRICT**

WHEREAS, the Loudon County Commission, in accordance with Chapter Seven, §13-7-105 of the Tennessee Code Annotated, may from time to time, amend the number, shape, boundary, area or any regulation of or within any district or districts, or any other provision of any zoning resolution, and

WHEREAS, the Regional Planning Commission has forwarded a recommendation regarding the amendment to the Zoning Map of Loudon County, Tennessee,

WHEREAS, a notice of public hearing and a description of the resolution appeared in, The Daily Edition on July 12, 2024 consistent with the provisions of Tennessee Code Annotated, §13-7-105, and

NOW, THEREFORE, BE IT RESOLVED by the Loudon County Commission that the Zoning Map of Loudon County, Tennessee be amended as follows:

Located 2028 Wilkerson Rd, situated in the 6th Legislative District, referenced by Tax Map 017, Parcel 089.00 to be rezoned from A-2/F-1 (Rural Residential District, Floodway District) to A-3/F-1 (Developing Agriculture District, Floodway District).

BE IT FINALLY RESOLVED, that this Resolution shall take effect immediately, the public welfare requiring it.

ATTEST

LOUDON COUNTY CHAIRMAN

DATE: _____

APPROVED: LOUDON COUNTY MAYOR

The votes on the question of approval of this Resolution by the Planning Commission are as follows:

APPROVED: _____

DISAPPROVED: _____

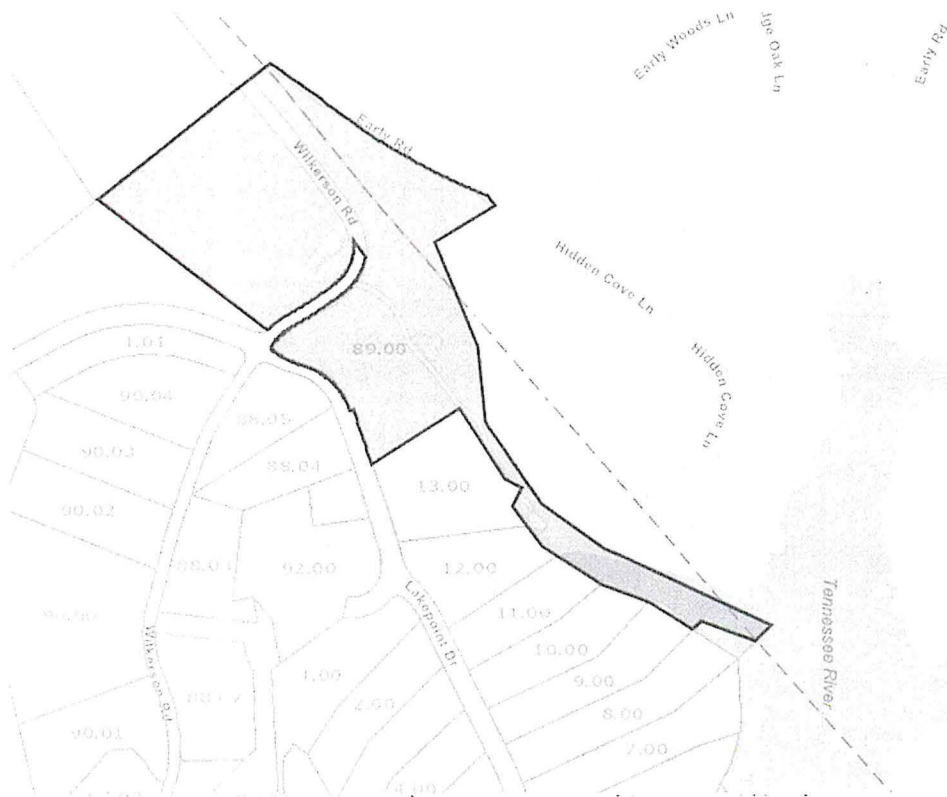
ABSTAINED: _____

**ATTEST: SECRETARY LOUDON COUNTY
REGIONAL PLANNING COMMISSION**
Dated:

RESOLUTION NO. _____

ILLUSTRATION ATTACHMENT

REZONE FROM A-2/F-1 (RURAL RESIDENTIAL DISTRICT, FLOODWAY DISTRICT)
TO A-3/F-1 (DEVELOPING AGRICULTURE DISTRICT, FLOODWAY DISTRICT).
REFERENCED BY LOUDON COUNTY TAX MAP 017, PARCEL 089.00
LOCATED AT 2028 WILKERSON RD,
LOUDON COUNTY, TN, SITUATED IN THE
6TH LEGISLATIVE DISTRICT



2024 LOUDON COUNTY BOARDS & COMMITTEES

Board/Committee Name	Term	Comment	Expiration
Adult Oriented Business Board	4 YR		
Bill Satterfield		Commissioner	August 2026
Rosemary Quillen		Commissioner	August 2026
Bill Geames		Commissioner	August 2026
Chase Randolph		Commissioner	August 2026
Adam Waller		Commissioner	August 2026
Agriculture Extension Committee	2 YR		
Van Shaver		Commissioner	September 2025
Joe Alexander			September 2025
Beth Snipes			September 2024
Bill Satterfield		Commissioner	September 2026
Gary Whitfield		Commissioner	September 2026
John Walton			September 2026
Sharon Long			September 2026

TRDA Board of Directors (Loudon)	6 YR		
Henry Cullen			August 2030
Jimmy Matlock			August 2026
Buddy Bradshaw			August 2026
TASS Board of Directors (Loudon)	3 YR		
Bill Satterfield			June 2026
James Brooks			June 2027
Chip Miller			June 2025
ADD HOC PLANNING	1 YR		
Van Shaver			November 2024
Adam Waller			November 2024
PUBLIC RECORDS COMMITTEE			
Darryl Tuck		Historian	
Nancy Gregg		At-Large	
Van Shaver		County Commissioner	
Adam Waller		Genealogist	
Tammy Gallaher		Register of Deeds	
Riley Wampler		County Clerk	
Hank Sledge		Judge	

Revised 11/15/2024 by TW

GUIDE:



Needs to be renewed / Date shows new renewal expiration





October 15, 2024

Loudon County Clerks Office
Quote Number 10022020-CSTA –OMNIA

Printer

Kyocera TA5054ci- 50 ppm A3 BW / Color MFP

DP-7160 – Dual Scan Document Processor

PF-7140 – 2 x 500 Paper Feeder

DF-7120 – 1000 Sheet Finisher

Fax System 12

OMNIA – \$6938.70

60 mo Lease - \$142.24 / mo.



Customer

Organization	Loudon County Finance Department		
DBA			
Address	100 River Rd, Ste 109		
City State Zip	Loudon	TN	37774
Phone	(865) 458-4663	Fax	

Purchase Order - Lease

NASPO/ValuePoint Contract #: CTR058809

and / or

State Participating Addendum (PA) #:

00082940 (TN)

Vendor

Company Name	Quadient Leasing USA Inc. FEDERAL ID# 94-2984524		
Attention	Government Sales	DUNS# 150836872	
Address	478 Wheelers Farms Rd		
City State Zip	Milford	CT	06461
Phone	(866) 448-0045	Fax	(203) 301-2600

Ship To

Organization	Loudon County Finance Department		
Attention	Matt Kleinschmidt		
Address	100 River Rd, Ste 110		
City State Zip	Loudon	TN	37774
Phone	(865) 458-4663	Email	kleinschmidt@loudoncounty-tn.

P.O. Number	P.O. Date	Requisitioner	Shipped Via	F.O.B. Point	Terms
			Ground	Destination	Quarterly Invoicing

QTY	Unit	Description	Unit Price	Total
60	Months	Lease Payment	\$248.78	\$14,926.80

Lease payment specified above for products listed below includes, as applicable, reduced price equipment maintenance to reflect first year free, meter rental, meter resets, postal rate changes, software license/support/subscription fees, delivery, installation, and operator training.

Products

QTY	Product ID	Description
1	IX7	iX-7 Series Base w/ Mixed Size Feeder, Sealer, Drop Tray & Ink Cartridge
1	IXWP10	IX Series 10 lb Weighing Platform

1) Order is governed under the terms and conditions of the NASPO/ValuePoint Master Price Agreement Contract Number CTR058809. Enter this order in accordance with the prices, terms, delivery method, and specifications listed above.

2) Payments will be sent to:
 Quadient Leasing USA, Inc.
 Dept 3682
 PO Box 123682
 Dallas TX 75312-3682

3) Send all correspondence to;
 Quadient Leasing USA, Inc.
 478 Wheelers Farms Rd
 Milford CT 06461
 Phone: 203-301-3400
 Fax: 203-301-2600

 Authorized by

 Date

 Print Name

 Title