

AGENDA

LOUDON COUNTY SOLID WASTE DISPOSAL COMMISSION

December 11, 2012

6:30 p.m.

LOUDON COUNTY COURTHOUSE ANNEX

Loudon, Tennessee

1. Call to Order
2. Approval of Minutes: November 12, 2012 & October 9, 2012
3. Items of Public Concern
4. Cash Activity Report
5. Operations Report
6. Attorney's Report
7. Landfill Evaluation
8. Viewshed Analysis
9. Other Items of Commission's Consideration
10. Adjourn

MONTHLY CASH REPORT

October OF 2012

CASH RECEIPTS:

Landfill Host Fees	13,047.44
Closure/Post Clo. Security Fees	19,594.32
Interest Received	325.11
Tire Grants	
Other: _____	

Total Monthly Revenue: 32,966.87

CASH DISBURSEMENTS:

Commissioner Meeting Pymts.	300.00
Commissioner Travel/Seminar	
Meeting Expense	
Legal Services	
Audit/Accounting Services	
Consultants	
Trustee's Commission	326.41
Debt Service/Loudon - Water Lines	
Santek-Tire Grant	
Engineering Services	
Office Supplies	
Building and Contents Insurance	
Other: <u>Contracted Services-Mowing</u>	600.00

Total Monthly Expense: 1,226.41

Change in Net Assets: 31,740.46

BEGINNING CASH BALANCE: \$ 2,414,781.20

CLOSURE RESERVES:	\$ 922,411.37
Total Closure Reserves and General Account	\$ 2,446,521.66
GENERAL ACCOUNT:	\$ 1,524,110.29

ENDING CASH BALANCE: \$ 2,446,521.66

CHANGE IN CASH POSITION \$ 31,740.46

MONTHLY CASH REPORT

November OF 2012

CASH RECEIPTS:

Landfill Host Fees	_____
Closure/Post Clo. Security Fees	_____
Interest Received	<u>348.50</u>
Tire Grants	_____
Other: _____	_____

Total Monthly Revenue: 348.50

CASH DISBURSEMENTS:

Commissioner Meeting Pymts.	<u>250.00</u>
Commissioner Travel/Seminar	_____
Meeting Expense	_____
Legal Services	<u>1,650.00</u>
Audit/Accounting Services	_____
Consultants	_____
Trustee's Commission	_____
Debt Service/Loudon - Water Lines	_____
Santek-Tire Grant	_____
Engineering Services	_____
Office Supplies	<u>129.00</u>
Building and Contents Insurance	_____
Other: <u>Contracted Services-Mowing</u>	<u>400.00</u>

Total Monthly Expense: 2,429.00

Change in Net Assets: (2,080.50)

BEGINNING CASH BALANCE: \$ 2,446,521.66

CLOSURE RESERVES:	<u>\$ 922,411.37</u>
Total Closure Reserves and General Account	<u>\$ 2,444,441.16</u>
GENERAL ACCOUNT:	<u>\$ 1,522,029.79</u>

ENDING CASH BALANCE: \$ 2,444,441.16

CHANGE IN CASH POSITION \$ (2,080.50)

PROPOSED AMENDMENT
TO THE
BYLAWS OF THE
LOUDON COUNTY SOLID WASTE DISPOSAL COMMISSION

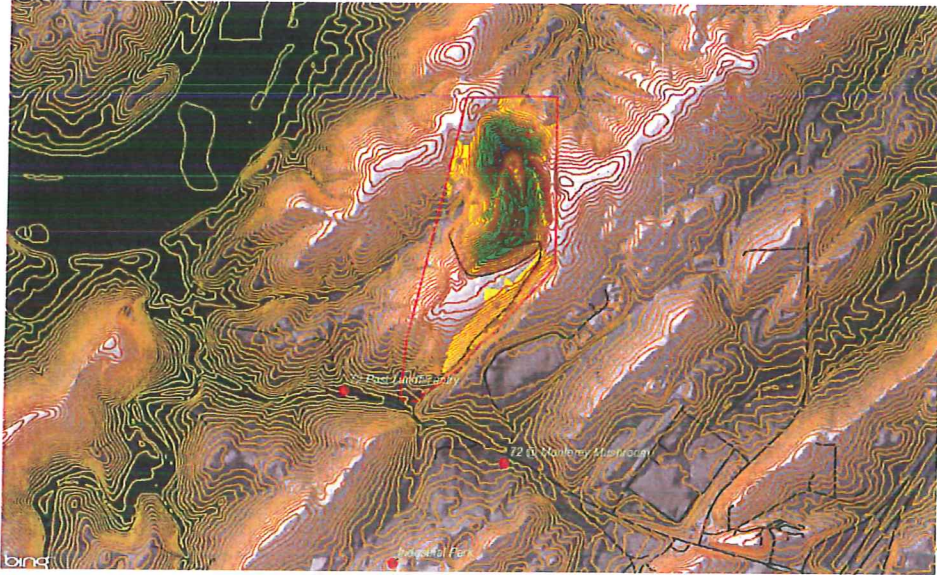
DECEMBER 11, 2012

Be it hereby proposed that the Bylaws of the Loudon County Solid Waste Disposal Commission be amended in Article IV (entitled "Officers"), Section 2 (entitled "Duties of Officers"), Subsection C (entitled "Secretary"), by deleting the current sentence in said subsection and substituting in lieu thereof the following new sentence:

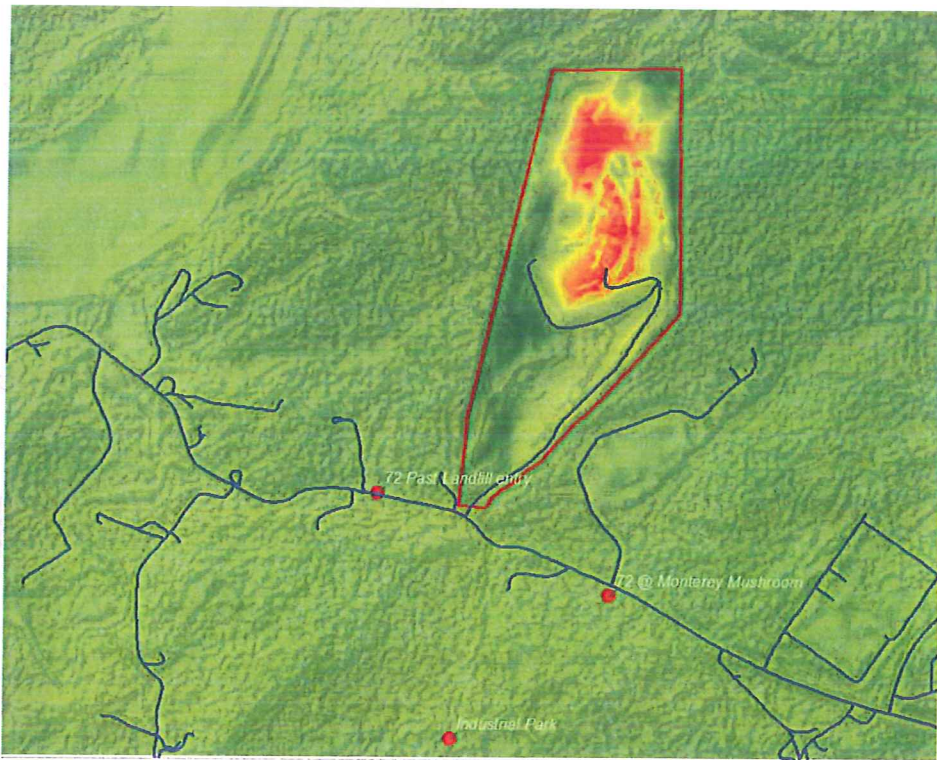
"Unless another officer or person is charged with such responsibility by vote of the Commission, ~~T~~the Secretary shall be responsible for keeping the minutes of the Commission, shall attest to the authorized execution of any documents approved by the Commission and shall perform such other duties as may be required by the Commission."

Proposed: December 11, 2012

Adopted: _____



Generated Contours, Area in color with elevation change, final build.



Area in color with elevation change, proposed final build.

Proposed Landfill Build Out: Monterey Mushroom Area.

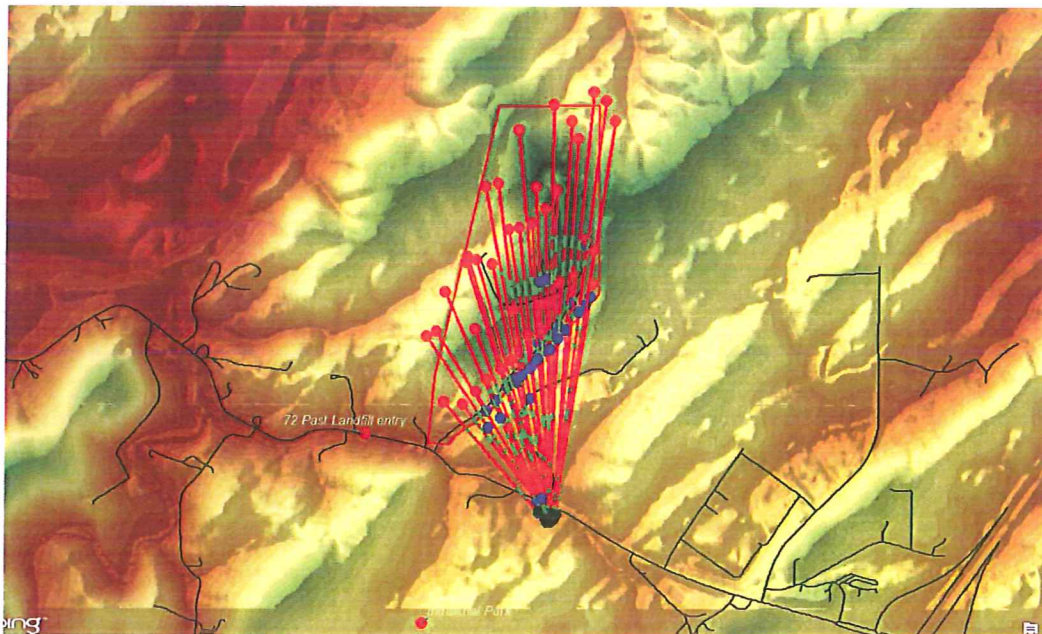


Most of the change in height occurs behind the landfill face and to the back of the property.



Visibility: 0.086 Miles

B



Line of site vectors showing view from Monterey Mushroom area. The blockages are represented as blue dots. The green areas on the line are visible from the road to the red dot terminus.



This shows current footprint and listed elevation change by color ramp. The front face elevation changes are mainly in the blue/green value range (less than 15 feet). The larger elevation changes occur behind the landfill face, with exception to the one northern corner.



650 25th Street, N.W., Suite 100
Cleveland, Tennessee 37311
(423) 476-9160
Toll Free: (800) 467-9160
Fax: (423) 479-1952

Email: mail@santekenviro.com
Internet: www.santekenviro.com

Monthly Operations Report
Matlock Bend Landfill
November 13, 2012 & December 11, 2012
Presented by:
Santek Environmental, Inc.

- I. OPERATIONS**
 - A. Tonnage Report
 - B. Customer Reports
 - C. Inspections
 - D. Materials Classification Report
 - E. Tire Report
 - F. Quarterly Waste Origin Report
 - G. Quarterly State Surcharge & Inspection Fee Report

- II. ENGINEERING**
 - A. Remaining Airspace Utilization Schedule

- III. HOST & SECURITY FEES**

LANDFILL TONNAGE VOLUME
MONTH ENDING -
NOVEMBER 2012

MATLOCK BEND LANDFILL

MONTH	2011	2012	2011 TO 2012
JANUARY	12263.30	21228.22	8964.92
FEBRUARY	14311.55	19725.24	5413.69
MARCH	21861.87	21278.30	-583.57
APRIL	19200.92	18513.04	-687.88
MAY	19189.17	21187.33	1998.16
JUNE	18316.34	19009.85	693.51
JULY	17378.46	19732.59	2354.13
AUGUST	25383.15	21348.08	-4035.07
SEPTEMBER	22528.42	19594.32	-2934.10
OCTOBER	21370.05	19515.01	-1855.04
NOVEMBER	25184.76	17925.25	-7259.51
DECEMBER	19804.15		
TOTAL	236792.14	219057.23	2,069.24

DAILY AVG FOR ANY
 RUNNING 30 DAY PERIOD *6505* 597.51

CITY OF LOUDON

MONTH	2011	2012	2011 TO 2012
JANUARY	323.05	360.21	37.16
FEBRUARY	321.96	332.91	10.95
MARCH	402.55	415.05	12.50
APRIL	394.02	370.06	-23.96
MAY	402.53	385.40	-17.13
JUNE	405.65	364.68	-40.97
JULY	419.74	404.44	-15.30
AUGUST	424.56	425.57	1.01
SEPTEMBER	374.30	335.77	-38.53
OCTOBER	373.74	360.39	-13.35
NOVEMBER	357.31	352.97	-4.34
DECEMBER	375.50		
TOTAL	4574.91	4107.45	(91.96)

LOUDON COUNTY

MONTH	2011	2012	2011 TO 2012
JANUARY	435.27	455.80	20.53
FEBRUARY	404.63	434.11	29.48
MARCH	474.86	500.25	25.39
APRIL	466.94	444.00	-22.94
MAY	468.57	476.95	8.38
JUNE	480.37	463.27	-17.10
JULY	470.47	496.37	25.90
AUGUST	459.32	481.72	22.40
SEPTEMBER	447.25	409.33	-37.92
OCTOBER	439.67	428.06	-11.61
NOVEMBER	470.12	421.04	-49.08
DECEMBER	502.73		
TOTAL	5520.20	5010.90	-6.57

WASTE SERVICES OF TN

MONTH	2011	2012	2011 TO 2012
JANUARY	4347.31	3697.81	-649.50
FEBRUARY	4637.87	3731.86	-906.01
MARCH	6678.49	3915.26	-2763.23
APRIL	5450.54	4006.32	-1444.22
MAY	7030.55	4785.96	-2244.59
JUNE	6076.54	4263.01	-1813.53
JULY	6536.20	5067.34	-1468.86
AUGUST	7337.91	5069.62	-2268.29
SEPTEMBER	3318.35	4521.29	1202.94
OCTOBER	3415.25	4816.13	1400.88
NOVEMBER	4087.34	3774.03	-313.31
DECEMBER	3386.00		
TOTAL	62302.35	47648.63	(11,267.72)

LENOIR CITY

MONTH	2011	2012	2011 TO 2012
JANUARY	266.42	284.88	18.46
FEBRUARY	271.36	283.75	12.39
MARCH	371.20	365.85	-5.35
APRIL	359.97	346.16	-13.81
MAY	360.17	340.93	-19.24
JUNE	365.29	320.28	-45.01
JULY	351.96	354.07	2.11
AUGUST	334.38	339.22	4.84
SEPTEMBER	450.84	315.80	-135.04
OCTOBER	325.24	309.40	-15.84
NOVEMBER	297.36	265.16	-32.20
DECEMBER	314.40		
TOTAL	4068.59	3525.50	(228.69)

WASTE CONNECTIONS

MONTH	2011	2012	2011 TO 2012
JANUARY	49.15	0.00	-49.15
FEBRUARY	0.00	30.22	30.22
MARCH	31.91	0.00	-31.91
APRIL	11.40	0.00	-11.40
MAY	100.53	0.00	-100.53
JUNE	7.70	0.00	-7.70
JULY	0.00	0.00	0.00
AUGUST	13.09	5.40	-7.69
SEPTEMBER	0.00	0.00	0.00
OCTOBER	17.41	6.60	-10.81
NOVEMBER	0.00	0.00	0.00
DECEMBER	85.10		
TOTAL	316.29	42.22	(188.97)

**LANDFILL TONNAGE VOLUME
MONTH ENDING -
NOVEMBER 2012**

KIMBERLY CLARK - ASH

MONTH	2011		2011	
	2011	2012	TO 2011	TO 2012
JANUARY	521.90	0.00	-521.90	
FEBRUARY	0.00	0.00	0.00	
MARCH	809.09	0.00	-809.09	
APRIL	755.23	0.00	-755.23	
MAY	640.15	0.00	-640.15	
JUNE	1124.46	0.00	-1124.46	
JULY	1176.65	0.00	-1176.65	
AUGUST	1053.96	0.00	-1053.96	
SEPTEMBER	57.68	0.00	-57.68	
OCTOBER	723.97	0.00	-723.97	
NOVEMBER	132.45	0.00	-132.45	
DECEMBER	0.00			
TOTAL	6995.54	0.00	(6,995.54)	

TATE & LYLE - SLUDGE

MONTH	2011		2011	
	2011	2012	TO 2011	TO 2012
JANUARY	1447.96	1264.44	-183.52	
FEBRUARY	2308.09	1593.58	-714.51	
MARCH	2691.51	1693.49	-998.02	
APRIL	1894.03	1629.64	-264.39	
MAY	2368.16	1527.87	-840.29	
JUNE	2083.81	1447.61	-636.20	
JULY	1775.29	2192.48	417.19	
AUGUST	1870.47	2142.03	271.56	
SEPTEMBER	1108.93	1856.06	747.13	
OCTOBER	1080.24	2099.31	1019.07	
NOVEMBER	1389.93	1630.86	240.93	
DECEMBER	1128.19			
TOTAL	21146.61	19077.37	(941.05)	

PSC METALS INC

MONTH	2011		2011	
	2011	2012	TO 2011	TO 2012
JANUARY	944.37	5439.68	4495.31	
FEBRUARY	3499.07	3937.54	438.47	
MARCH	5743.05	4655.10	-1087.95	
APRIL	4352.13	3902.33	-449.80	
MAY	3551.34	4230.61	679.27	
JUNE	3637.91	2766.11	-871.80	
JULY	2305.75	2029.92	-275.83	
AUGUST	4901.35	2612.79	-2288.56	
SEPTEMBER	4784.14	2619.50	-2164.64	
OCTOBER	4247.48	3089.46	-1158.02	
NOVEMBER	4596.66	2748.18	-1848.48	
DECEMBER	3740.92			
TOTAL	46304.17	38031.22	(4,532.03)	

TATE & LYLE - ASH

MONTH	2011		2011	
	2011	2012	TO 2011	TO 2012
JANUARY	1447.96	958.79	-489.17	
FEBRUARY	756.49	470.78	-285.71	
MARCH	2140.97	633.01	-1507.96	
APRIL	1896.27	894.70	-1001.57	
MAY	3055.98	1183.70	-1872.28	
JUNE	2362.07	1219.60	-1142.47	
JULY	2699.09	1090.55	-1608.54	
AUGUST	3473.16	1217.54	-2255.62	
SEPTEMBER	622.29	1113.40	491.11	
OCTOBER	963.44	1109.09	145.65	
NOVEMBER	830.44	639.06	-191.38	
DECEMBER	808.75			
TOTAL	21056.91	10530.22	(9,717.94)	

KIMBERLY CLARK - PAPER WASTE

MONTH	2011		2011	
	2011	2012	TO 2011	TO 2012
JANUARY		7975.38	7975.38	
FEBRUARY		7790.53	7790.53	
MARCH		7790.86	7790.86	
APRIL		6201.17	6201.17	
MAY		7497.63	7497.63	
JUNE		7543.41	7543.41	
JULY		7927.52	5516.48	
AUGUST		8342.83	1833.35	
SEPTEMBER		7891.37	-1423.52	
OCTOBER		6685.12	-1347.87	
NOVEMBER		6818.07	-4743.10	
DECEMBER		8141.51		
TOTAL		82463.89	44,654.32	



**TENNESSEE DEPARTMENT OF ENVIRONMENT AND CONSERVATION
DIVISION OF SOLID WASTE MANAGEMENT
SOLID WASTE DISPOSAL FACILITY EVALUATION**

NAME OF SITE <i>Loudon County Landfill</i>		REGISTRATION NUMBER <i>SNL 53-0203</i>		DATE <i>November 20, 2012</i>			
LOCATION (physical) <i>Off Hwy 72 west of Loudon</i>		PURPOSE <input checked="" type="checkbox"/> Complete <input type="checkbox"/> Complaint		<input type="checkbox"/> Follow-up <input type="checkbox"/> Other			
OWNER/OPERATOR <i>County of Loudon, TN Solid Authority Operator: S. S. S. / Lewis / Hydon</i>		TYPE OF FACILITY		CLASS I <input checked="" type="checkbox"/> CLASS II <input type="checkbox"/> CLASS III <input type="checkbox"/> CLASS IV <input type="checkbox"/>			
				V1 V2			
Inadequate vector control	8010	___	___	Leachate improperly managed	8330	___	___
Access not limited to operating hours	8020	___	___	Inadequate leachate collection system	8340	___	___
Inadequate artificial or natural barrier	8030	___	___	Leachate observed at the site	8350	___	___
Inadequate information signs	8040	___	___	Leachate entering runoff	8360	___	___
Unsatisfactory access road(s)/parking area(s)	8050	___	___	Leachate entering a water course	8370	___	___
Certified personnel not present during operating hours	8060	___	___	Inadequate gas migration control system	8380	___	___
Unapproved salvaging of waste	8070	___	___	Inadequate maintenance of gas migration control system	8390	___	___
Evidence of open burning	8080	___	___	Potential for explosions or uncontrolled fires	8420	___	___
Inadequate fire protection	8090	___	___	Waste not confined to a manageable area	8430	___	___
Unsatisfactory litter control	8110	___	___	Improper spreading of waste	8440	___	___
Inadequate employee facilities	8120	___	___	Improper compacting of waste	8450	___	___
No communication devices	8130	___	___	Unsatisfactory initial cover	8460	___	___
Inadequate operating equipment	8140	___	___	Unsatisfactory intermediate cover	8470	___	___
Unavailability of backup equipment	8150	___	___	Unsatisfactory final cover	8480	___	___
Unavailability of cover material	8160	___	___	Excessive pooling of water	8490	___	___
Inadequate maintenance of runoff/runoff system(s)	8170	___	___	Unsatisfactory stabilization of cover	8510	___	___
Inadequate erosion control	8180	___	___	Dumping of waste into water	8520	___	___
Inadequate dust control	8190	___	___	Unsatisfactory records or reports	8530	___	___
Unauthorized waste accepted	8210	___	___	Groundwater monitoring system improperly maintained	8540	___	___
Unapproved special waste accepted	8220	___	___	Operation does not correspond with engineering plans	8570	___	___
Tires improperly handled	8230	___	___	Operation does not correspond with permit condition(s)	8580	___	___
Medical waste improperly handled	8240	___	___	Permit, plans, operating manual not available	8590	___	___
Dead animals improperly handled	8250	___	___	No operating scales	8610	___	___
Washout of solid waste	8270	___	___				
No permanent benchmark	8280	___	___				
Inadequate random inspection program	8290	___	___				
Mishandling of special waste	8300	___	___				
Buffer zone standard violated	8310	___	___				
Inadequate maintenance of leachate management system	8320	___	___				
COMMENTS: <i>They are placing toxic litter in new cell with suitable waste and sending some waste to the far end at the top where there is only a little room left. Both places appear to be well operated. The site is in good condition overall with drainage ditches maintained and large areas of the slopes and surrounding disturbed areas seeded, some beginning to turn green. No problems observed with former slide area.</i>							
PERSON INTERVIEWED (Signature) <i>[Signature]</i>				INSPECTED BY (Signature) <i>[Signature]</i>			
TITLE <i>Site manager</i>				TITLE <i>Environmental Engineer</i>			
TIME OF DAY <i>11:00-11:30 AM</i>		WEATHER CONDITIONS <i>Cloudy & 70°</i>		COMPLIANCE DATE			

Distribution: Facility - White Field Office - Canary Central Office - XC



SOLID WASTE DISPOSAL FACILITY
Post-Closure Inspection

NAME OF SITE <i>London County Landfill (closed area)</i>		REGISTRATION NUMBER <i>SNL 53-0203</i>	DATE <i>October 12 2012</i>
LOCATION (physical) <i>Off Hwy 72 west of London</i>		PURPOSE <input checked="" type="checkbox"/> Complete () Follow-up () Consultation () Complaint () Other	
OWNER/OPERATOR <i>Owner: London County, S.W. Authority Operator: Simble/Len Hogue</i>		TYPE OF FACILITY <input checked="" type="checkbox"/> Class I () Class II () Class III () Class IV	
FINAL COVER			V1 V2
-Unsatisfactory final cover (sloughing, cracks, etc.).....			9010
-Pooling of water.....			9020
-Unsatisfactory stabilization of cover.....			9030
EROSION/SEDIMENT CONTROL			
-Inadequate erosion control.....			9040
-Washout of solid waste.....			9050
RUN-ON/RUN-OFF CONTROL			
-Inadequate maintenance of run-on/run-off systems(s) (ponds, ditches, etc.).....			9060
LEACHATE CONTROL			
-Leachate observed at site.....			9070
-Leachate entering run-off.....			9080
-Leachate entering a water course.....			9090
-Inadequate maintenance of leachate collection and removal system.....			9110
GAS MANAGEMENT SYSTEM			
-Inadequate gas migration control system.....			9120
-Inadequate maintenance of gas migration control system.....			9130
GROUNDWATER MONITORING SYSTEM			
-Groundwater monitoring system improperly maintained.....			9140
-Groundwater protection standard violated.....			9150
-Unapproved/inadequate groundwater monitoring methods.....			9160
SITE ACCESS			
-Inadequate artificial or natural barrier.....			9170
GENERAL			
-Facility does not correspond with permit condition(s).....			9180
COMMENTS: <i>The closed area is in good condition. Repairs and maintenance requested earlier this year have been completed and the reworked areas have been seeded.</i>			
PERSON INTERVIEWED (Signature) <i>L. Hogue</i>		INSPECTED BY (Signature) <i>Rich Brown</i>	
TITLE <i>Site Manager</i>		TITLE <i>Environmental Engineer</i>	
TIME OF DAY <i>10:30-11:00 AM</i>	WEATHER CONDITIONS <i>Cloudy, 60s</i>	COMPLIANCE DATE	



**TENNESSEE DEPARTMENT OF ENVIRONMENT AND CONSERVATION
DIVISION OF SOLID WASTE MANAGEMENT
SOLID WASTE DISPOSAL FACILITY EVALUATION**

NAME OF SITE <i>London County Mattok Bend</i>		REGISTRATION NUMBER <i>SNL 53-0203</i>		DATE <i>11/2/12</i>	
LOCATION (physical) <i> Hwy 72N off I-75 London</i>			PURPOSE <input checked="" type="checkbox"/> Complete <input type="checkbox"/> Follow-up <input type="checkbox"/> Complaint <input type="checkbox"/> Other		
OWNER/OPERATOR <i>London County / Sontek</i>			TYPE OF FACILITY <input checked="" type="checkbox"/> CLASS I <input type="checkbox"/> CLASS II <input type="checkbox"/> CLASS III <input type="checkbox"/> CLASS IV		
		V1	V2		
Inadequate vector control	8010	___	___	Leachate improperly managed	8330
Access not limited to operating hours	8020	___	___	Inadequate leachate collection system	8340
Inadequate artificial or natural barrier	8030	___	___	Leachate observed at the site	8350
Inadequate information signs	8040	___	___	Leachate entering runoff	8360
Unsatisfactory access road(s)/parking area(s)	8050	___	___	Leachate entering a water course	8370
Certified personnel not present during operating hours	8060	___	___	Inadequate gas migration control system	8380
Unapproved salvaging of waste	8070	___	___	Inadequate maintenance of gas migration control system	8390
Evidence of open burning	8080	___	___	Potential for explosions or uncontrolled fires	8420
Inadequate fire protection	8090	___	___	Waste not confined to a manageable area	8430
Unsatisfactory litter control	8110	___	___	Improper spreading of waste	8440
Inadequate employee facilities	8120	___	___	Improper compacting of waste	8450
No communication devices	8130	___	___	Unsatisfactory initial cover	8460
Inadequate operating equipment	8140	___	___	Unsatisfactory intermediate cover	8470
Unavailability of backup equipment	8150	___	___	Unsatisfactory final cover	8480
Unavailability of cover material	8160	___	___	Excessive pooling of water	8490
Inadequate maintenance of runoff/runoff system(s)	8170	___	___	Unsatisfactory stabilization of cover	8510
Inadequate erosion control	8180	___	___	Dumping of waste into water	8520
Inadequate dust control	8190	___	___	Unsatisfactory records or reports	8530
Unauthorized waste accepted	8210	___	___	Groundwater monitoring system improperly maintained	8540
Unapproved special waste accepted	8220	___	___	Operation does not correspond with engineering plans	8570
Tires improperly handled	8230	___	___	Operation does not correspond with permit condition(s)	8580
Medical waste improperly handled	8240	___	___	Permit, plans, operating manual not available	8590
Dead animals improperly handled	8250	___	___	No operating scales	8610
Washout of solid waste	8270	___	___		
No permanent benchmark	8280	___	___		
Inadequate random inspection program	8290	___	___		
Mishandling of special waste	8300	___	___		
Buffer zone standard violated	8310	___	___		
Inadequate maintenance of leachate management system	8320	___	___		
COMMENTS:					
<i>man area above tank dont keep 2 faces open longer than 2 weeks, finish at.</i>					
<i>No violations observed.</i>					
PERSON INTERVIEWED (Signature) <i>[Signature]</i>			INSPECTED BY (Signature) <i>[Signature]</i>		
TITLE <i>MANAGER</i>			TITLE <i>Geologist</i>		
TIME OF DAY <i>11:20 A</i>	WEATHER CONDITIONS <i>Cloudy / cool</i>		COMPLIANCE DATE		

Distribution: Facility - White

Field Office - Canary

Central Office - XC

Materials Classification Report

Matlock Bend Landfill Monthly Tonnage Summaries

Material	November – 12	Unit
<u>MSW</u>		
MSW	6,012	Tons
<u>Special Waste</u>		
Other	9,555	Tons
Ash	778	Tons
Sludge	1,781	Tons
Total Special Waste	12,114	
Total Material	18,126	
% MSW	33%	
% Special Waste	67%	
 % Sludge	 10%	

2011 Sludge %		2012 Sludge %	
March	16	January	6
April	12	February	9
May	13	March	8
June	12	April	9
July	11	May	8
August	8	June	8
September	6	July	11
October	6	August	10
November	6	September	10
December	7	October	12
		November	10

**2012-2013 Matlock Bend
Landfill Tire Report**

Month	Tonnage
Jul-12	29.45
Aug-12	34.25
Sep-12	17.27
Oct-12	15.98
Nov-12	36.29
Dec-12	
Jan-13	
Feb-13	
Mar-13	
Apr-13	
May-13	
Jun-13	
Total (tons)	133.24

Landfill Origin Report for Loudon County, Tennessee

Advertised Tipping Fee Per ton \$27.45

Origin of Waste (Name of County)	Waste Received From County, Transfer Station or Other	Q3 2012	Q4 2012	YTD Total
Bradley	County	24.96		24.96
Knox	County	5,258.61		5,258.61
Loudon	County	54,292.56		54,292.56
McMinn	County	122.45		122.45
Monroe	County	20.84		20.84
Roane	County	955.56		955.56



**DEPARTMENT OF ENVIRONMENT AND CONSERVATION
DIVISION OF Solid Waste Management- SWA
Quarterly Solid Waste Surcharge and Facility Inspection Fee Report**

(Type or print. See reverse for instructions)

Facility ID Number:
SNL 53-103-0203

For Quarter Ending
September 30, 2012

Facility Name and Address:
Matlock Bend Landfill
Santek Environmental
650 25th St, NW, Suite 100
Cleveland, TN 37311

(Change if incorrect)

1. Facility Location
21712 Hwy 72 North
London, TN 37774

2. Facility Owner/Operator
London County/Santek Environmental Inc

3. Telephone No.
(423) 303-7101

4. Amount of waste received during each month of reporting period (in tons):

First month of quarter	<u>19732.59</u>
Second month of quarter	<u>21348.07</u>
Third month of quarter	<u>19594.32</u>

5. Total tons of waste received during reporting period: 60674.98

**REMITTANCE COPY
RETURN WITH PAYMENT**

6(a). Surcharge: Total tons 60674.98 X \$0.90 = \$ 54607.48
(This fee to begin on July 01, 2007)

(b). Deduct 1% if paid on or before due date Less \$ 546.07
(This deduction to begin on July 01, 2007)

Total Surcharge \$ 54061.41

7. Facility Inspection Fee: Total tons 60674.98 X \$0.35 = \$ 21236.24

8. Outstanding debit or credit \$ 0

9. Total due \$ 75297.65

Make check or money order payable to the Treasurer, State of Tennessee. Payments are due January 31, April 30, July 31, and October 31.

10. I certify that the information in this report is true and correct.

Janice Miller Staff Accountant
10/23/12

Matlock Bend Landfill 2013 Airspace Projection / Construction Schedule

DATE	REMAINING AIRSPACE ¹ (CY)	MONTHLY TONNAGE	ACTUAL / PROJECTED ²	UTILIZATION FACTOR	MONTHLY VOLUME CONSUMED (CY)	ENDING MONTHLY REMAINING AIRSPACE (CY)
		19,012		1.15		
Sept. 19, 2012	816,825	-	-	-	-	-
Sept. 20-30,2012	-	2,423	A	1.15	2,786	814,039
October	-	19,524	A	1.15	22,453	791,586
November	-	17,903	A	1.15	20,588	770,998
December	-	19,012	P	1.15	21,864	749,133
January '13	-	19,012	P	1.15	21,864	727,269
February	-	19,012	P	1.15	21,864	705,405
March	-	19,012	P	1.15	21,864	683,541
April	-	19,012	P	1.15	21,864	661,677
May	-	19,012	P	1.15	21,864	639,813
June	-	19,012	P	1.15	21,864	617,949
July	-	19,012	P	1.15	21,864	596,085
August	-	19,012	P	1.15	21,864	574,221
September	-	19,012	P	1.15	21,864	552,356
October	-	19,012	P	1.15	21,864	530,492
November	-	19,012	P	1.15	21,864	508,628
December	-	19,012	P	1.15	21,864	486,764

¹ = Remaining airspace based on Sept. 19, 2012 aerial survey.

Full Date - H

November-2015

² = Projected tonnages are based on a 3 month average per Matt Dillard on 6-2-09.

³ = Utilization rate based on the annual utilization rate per October 27, 2008 construction meeting (Avg. Utilization = 1.38 cy/ton)

Tonnage for Past 3 Months

September	19,610
October	19,524
November	17,903
Average	19,012

cc: Matt
Rob
Kenny F.
Cheryl
Ron
Chris
Levi
David M.
Jason

SANTEK



650 25th Street NW, Ste 100
Cleveland, TN 37311

Phone: (423) 303-7101
Toll Free: (800) 467-9160
www.santekenviro.com

November 12, 2012

Loudon County Solid Waste Disposal Commission
100 River Road
P.O. Box 351
Loudon, TN 37774

Dear Steve:

Pursuant to Section 10.6 and 10.7 of the Sanitary Landfill Operation Agreement between Loudon and Santek as of July 1, 2007, Santek agreed to pay the Commission a host fee and security fee as defined in the Agreement. The following recap reflects the calculation for the period October 1, 2012 to October 31, 2012:

Host Fees (Greater of below) –	
Total Tip Fees Billed	\$349,091.85
Host Fee Percentage	<u>4.00%</u>
	\$ 13,963.67
Minimum Fee	<u>\$ 10,652.00</u>
Security Fees (Greater of below) –	
Total Tonnage Received	19,515.01
Rate per ton	<u>\$ 1.00</u>
Total	\$ 19,515.01
Total Tip Fees Billed	\$349,091.85
Security Fee Percentage	<u>5.00%</u>
	\$ 17,454.59

Our checks in payment of the above fees have been remitted to the above address for the Commission. Should you have any questions or need additional information, please let me know.

Sincerely,

Andrew Kandy
Regional Controller



650 25th Street NW, Ste 100
Cleveland, TN 37311

Phone: (423) 303-7101
Toll Free: (800) 467-9160
www.santekenviro.com

December 10, 2012

Loudon County Solid Waste Disposal Commission
100 River Road
P.O. Box 351
Loudon, TN 37774

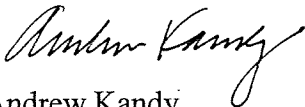
Dear Steve:

Pursuant to Section 10.6 and 10.7 of the Sanitary Landfill Operation Agreement between Loudon and Santek as of July 1, 2007, Santek agreed to pay the Commission a host fee and security fee as defined in the Agreement. The following recap reflects the calculation for the period November 1, 2012 to November 30, 2012:

Host Fees (Greater of below) –	
Total Tip Fees Billed	\$320,628.72
Host Fee Percentage	<u>4.00%</u>
	\$ 12,825.15
Minimum Fee	<u>\$ 10,652.00</u>
Security Fees (Greater of below) –	
Total Tonnage Received	17,925.25
Rate per ton	<u>\$ 1.00</u>
Total	\$ 17,925.25
Total Tip Fees Billed	\$320,628.72
Security Fee Percentage	<u>5.00%</u>
	\$ 16,031.44

Our checks in payment of the above fees have been remitted to the above address for the Commission. Should you have any questions or need additional information, please let me know.

Sincerely,


Andrew Kandy
Regional Controller