

AGENDA

LOUDON COUNTY SOLID WASTE DISPOSAL COMMISSION

November 12, 2012

6:30 p.m.

LOUDON COUNTY COURTHOUSE ANNEX

Loudon, Tennessee

1. Call to Order
2. Items of Public Concern
3. Evaluation of Subcontractor Interviews
 - i. Civil and Environmental Consultants (6:30 p.m.)
 - ii. CTI (7 p.m.)
 - iii. GeoSyntec (7:30 p.m.)
 - iv. QE2 (8 p.m.)
4. Operations Report
5. Attorney's Report
6. Viewshed Analysis
7. Other Items of Commission's Consideration
- ~~10.~~⁸ Adjourn

	Professional Qualifications	Experience on Similar projects	Description of the Proposed work and Approach	Capability to timely Deliver high quality Services	Recognized Competence and Integrity
Civil & Environmental Consultants, Inc. (Phoenix, AZ)					
CTI Engineering, Inc. (Chattanooga, TN)					
Geosyntec Consultants (Knoxville, TN)					
Quantum Environmental & Engineering Services, LLC (Knoxville, TN)					

**Loudon County Solid Waste Disposal Commission
RFP for Matlock Bend Landfill Review**

**Final Ranking Sheet
November 13, 2012**

INSTRUCTIONS: PLEASE RANK THE FOUR PRESENTERS IN ORDER OF PREFERENCE BY PLACING "1" BESIDES THE PRESENTER YOU WOULD SELECT AS YOUR FIRST CHOICE, A "2" BESIDES THE NAME OF YOUR SECOND CHOICE, AND THE NUMBERS "3" AND "4" BESIDES YOUR THIRD AND FOURTH CHOICES RESPECTIVELY.

THEN PLEASE SIGN OR INITIAL THIS SHEET AND RETURN TO CCG FOR TALLYING.

PRESENTER NO. 1 – CIVIL & ENVIRONMENTAL CONSULTANTS, INC. (Phoenix, AR)

YOUR RANK: _____

PRESENTER NO. 2 – CTI ENGINEERING, INC. (Chattanooga, TN)

YOUR RANK: _____

PRESENTER NO. 3 – GEOSYNTEC CONSULTANTS (Knoxville, TN)

YOUR RANK: _____

PRESENTER NO. 4 – QUANTUM ENVIRON. & ENG. SERVICES, INC. (Knoxville, TN)

YOUR RANK: _____

YOUR NAME OR INITIALS: _____

**Loudon County Solid Waste Disposal Commission
RFP for Matlock Bend Landfill Review**

**Final Presentation Note Sheet
November 13, 2012**

PRESENTER NO. 1 – CIVIL & ENVIRONMENTAL CONSULTANTS, INC. (Phoenix, AR)

- 1. Professional Qualifications:**
- 2. Experience on Similar Projects:**
- 3. Description of Proposed Work and Approach:**
- 4. Effectiveness of Suggested Approach**
- 5. Capability to Timely Deliver High Quality Services**
- 6. Recognized Competence and Integrity**
- 7. Final Presentation and Answers to Questions**
- 8. Cost Considerations:**
- 9. Other:**

**Loudon County Solid Waste Disposal Commission
RFP for Matlock Bend Landfill Review**

**Final Presentation Note Sheet
November 13, 2012**

PRESENTER NO. 2 – CTI ENGINEERING, INC. (Chattanooga, TN)

- 1. Professional Qualifications:**

- 2. Experience on Similar Projects:**

- 3. Description of Proposed Work and Approach:**

- 4. Effectiveness of Suggested Approach**

- 5. Capability to Timely Deliver High Quality Services**

- 6. Recognized Competence and Integrity**

- 7. Final Presentation and Answers to Questions**

- 8. Cost Considerations:**

- 9. Other:**

**Loudon County Solid Waste Disposal Commission
RFP for Matlock Bend Landfill Review**

**Final Presentation Note Sheet
November 13, 2012**

PRESENTER NO. 3 – GEOSYNTEC CONSULTANTS (Knoxville, TN)

- 1. Professional Qualifications:**
- 2. Experience on Similar Projects:**
- 3. Description of Proposed Work and Approach:**
- 4. Effectiveness of Suggested Approach**
- 5. Capability to Timely Deliver High Quality Services**
- 6. Recognized Competence and Integrity**
- 7. Final Presentation and Answers to Questions**
- 8. Cost Considerations:**
- 9. Other:**

**Loudon County Solid Waste Disposal Commission
RFP for Matlock Bend Landfill Review**

**Final Presentation Note Sheet
November 13, 2012**

PRESENTER NO. 4 – QUANTUM ENVIRON. & ENG. SERVICES, INC. (Knoxville, TN)

- 1. Professional Qualifications:**

- 2. Experience on Similar Projects:**

- 3. Description of Proposed Work and Approach:**

- 4. Effectiveness of Suggested Approach**

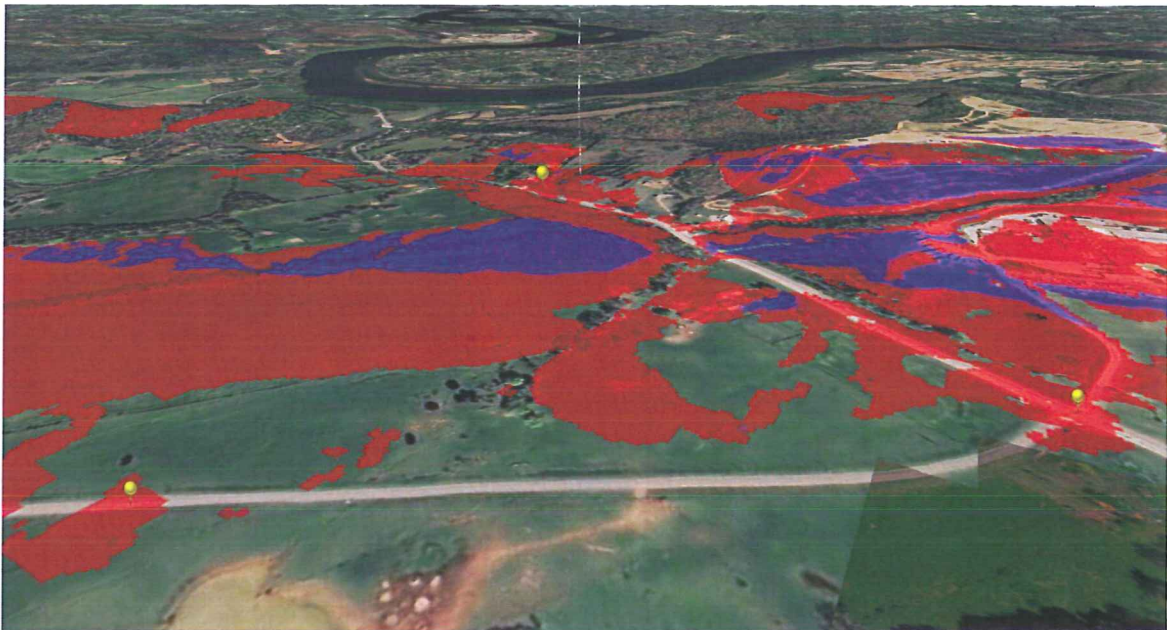
- 5. Capability to Timely Deliver High Quality Services**

- 6. Recognized Competence and Integrity**

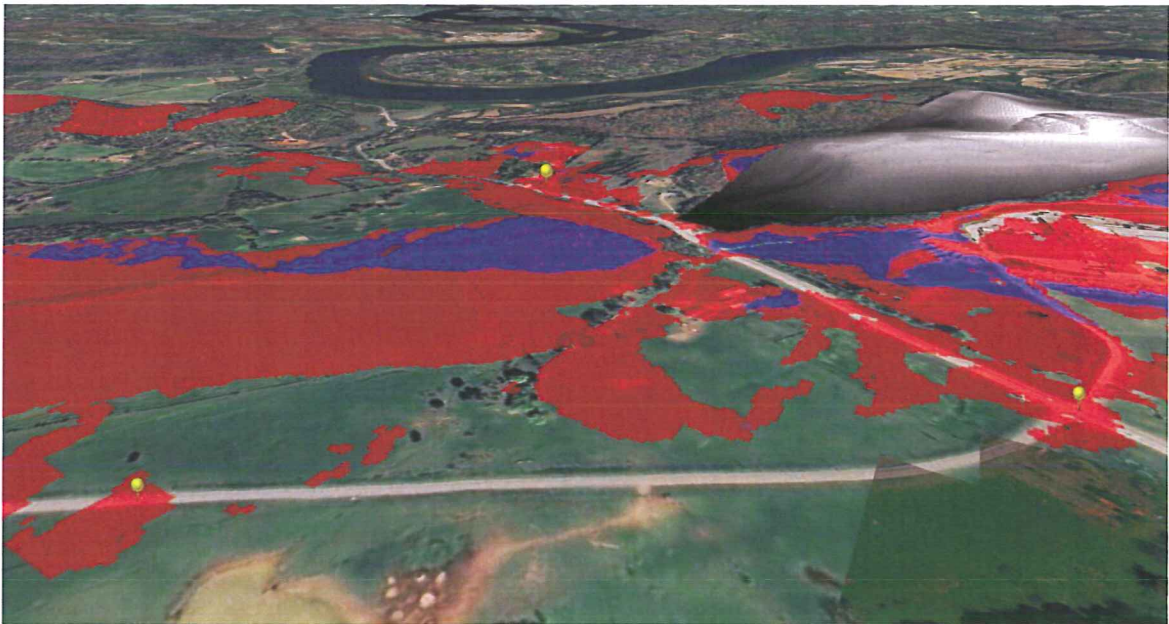
- 7. Final Presentation and Answers to Questions**

- 8. Cost Considerations:**

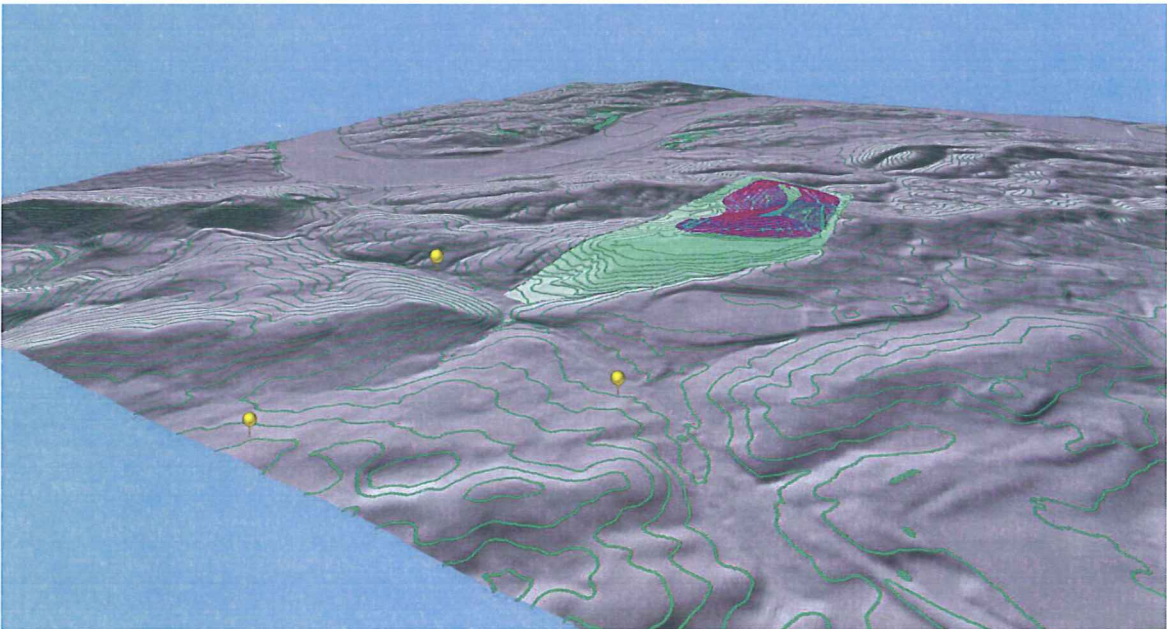
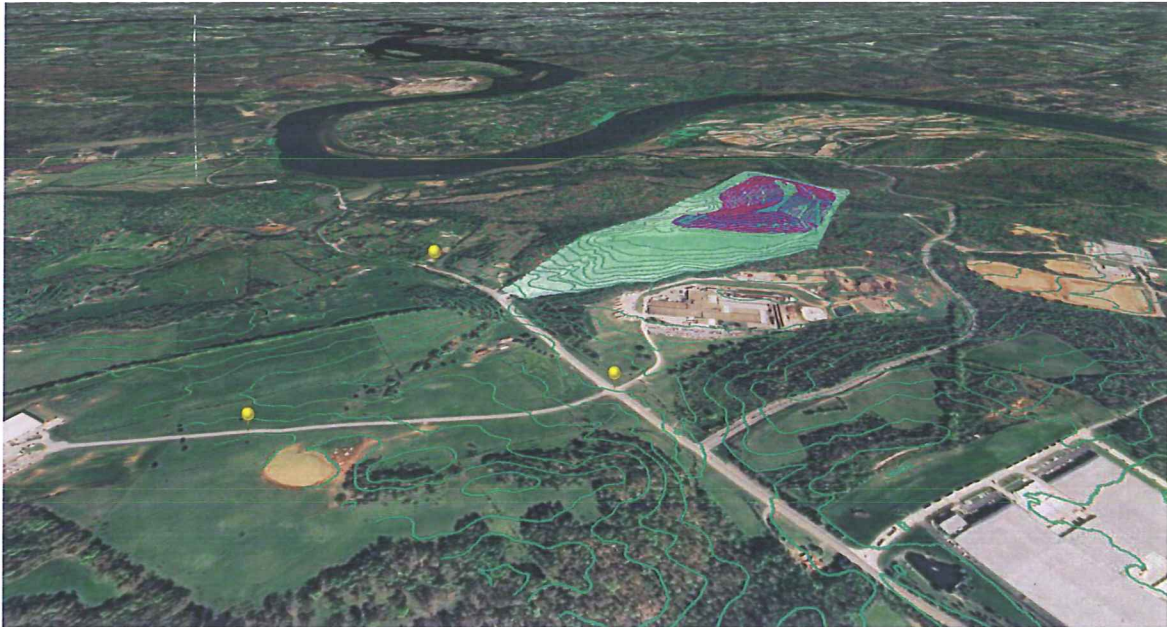
- 9. Other:**

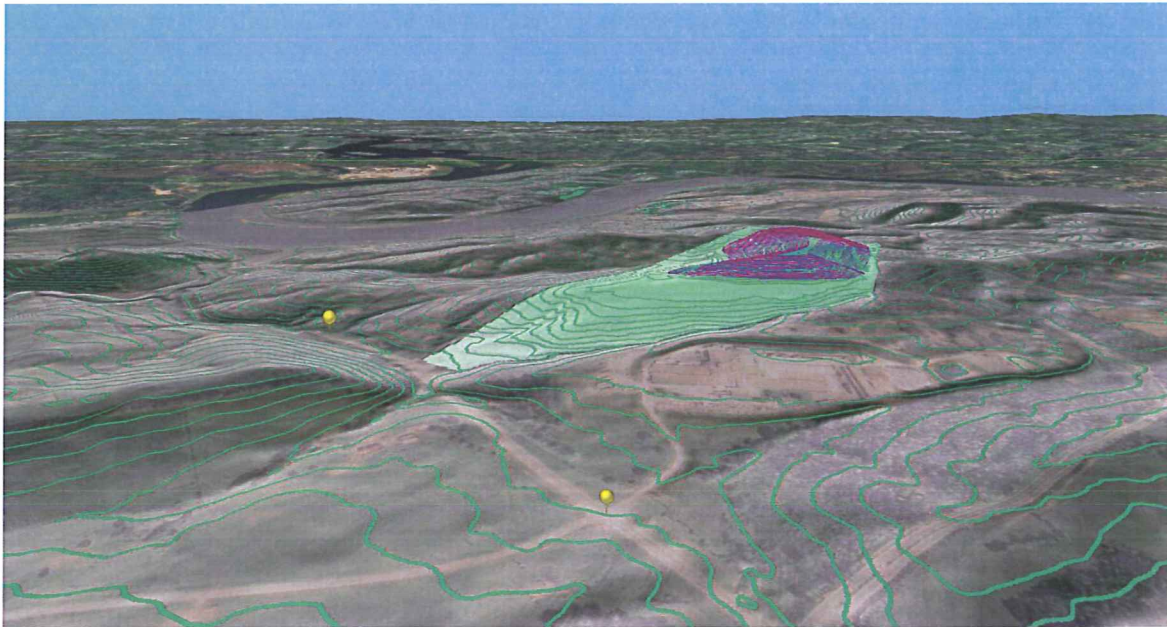


CURRENT VISIBILITY FROM 3 POINTS (2 on 72, 1 in Industrial Park)



BUILD-OUT VISIBILITY FROM 3 POINTS (2 on 72, 1 in Industrial Park)





November 13, 2012

Loudon County Solid Waste Commission
Loudon, TN

Commission Chairman and Commissioners:

Attached is a map with property lines delineating the existing landfill operations and adjacent tracts currently owned by the Loudon County Solid Waste Commission. I have highlighted the property lines of property owned by the Commission in green.

The two (2) tracts highlighted in red are properties owned and offered for sale by my clients, the Thomasons. These tracts total approximately 17 acres stretching from the Roger Atchley tract to front on Hwy 72. My clients and I believe this acreage could be a valuable addition the Commission's land portfolio.

My client's property is currently listed on the Knoxville Area Association of Realtors multiple listing service with a listing price of \$170,000. After review and discussion, if the Commission is interested in the property, contact me at 865-816-0340.

I thank you for your time and attention.

Mark Moore

A handwritten signature in black ink, appearing to read 'Mark Moore', written over a printed name and company name.

Wattenbarger-Smith Real Estate

Copy: Lisa Steed Thomason
Tony Thomason
Larry Smith



Tennessee Property Viewer

Aerial Photography Street Map Show FEMA DFIRM Flood Map Hide Property Lines

