

**LOUDON COUNTY COMMISSION  
REGULAR MEETING**

**March 05, 2007**

- |   |                                   |
|---|-----------------------------------|
| <b>(1) Public Hearing</b>   |                                   |
| <b>(2) Opening of Meeting</b>   |                                   |
| <b>(3) Roll Call</b>  |                                   |
| <b>(4) Agenda Adopted</b>   |                                   |
| <b>(5) Minutes for Feb. 05 &amp;. 19, 2007 Approved</b>                       |                                   |
| <b>(6) Comments: Agenda Items</b>   |                                   |
| <b>(7) 2007 Ethics Committee Resolution Adopted</b>                           | <u><b>Resolution 030507-A</b></u> |
| <b>(8) 2006-2007 Road &amp; Subdivision List Adopted</b>                      | <u><b>Exhibit 030507-B</b></u>    |
| <b>(9) 3060 Old Kingston Road <u>Denied</u></b>                               |                                   |
| <b>(10) 21444 Hwy 321 S Resolution Adopted</b>                                | <u><b>Resolution 030507-C</b></u> |
| <b>(11) 19202 Beals Chapel Resolution Adopted</b>                             | <u><b>Resolution 030507-D</b></u> |
| <b>(12) Christensen Boulevard Resolution Adopted</b>                          | <u><b>Resolution 030507-E</b></u> |
| <b>(13) Improvement for East Coast Tellico Pkwy Resolution Adopted</b>        | <u><b>Resolution 030507-F</b></u> |
| <b>(14) Lenoir Car Works Resolution Adopted</b>                               | <u><b>Resolution 030507-G</b></u> |
| <b>(15) General Fund Budget Amendments Approved</b>                           | <u><b>Exhibit 030507-H</b></u>    |
| <b>(16) Highway Department Fund Budget Amendments Approved</b>                | <u><b>Exhibit 030507-I</b></u>    |
| <b>(17) General Purpose School Fund Budget Amendments Approved</b>            | <u><b>Exhibit 030507-J</b></u>    |
| <b>(18) General Dept Service Budget Amendments Approved</b>                   | <u><b>Exhibit 030507-K</b></u>    |
| <b>(19) General Capital Projects Amendments Approved</b>                      | <u><b>Exhibit 030507-L</b></u>    |
| <b>(20) Leasing Copier for Juvenile Center Approved</b>                       |                                   |
| <b>(21) Request to CTAS for Technical Advice of Sales Tax Issues Approved</b> |                                   |
| <b>(22) Comments: Announcements</b>   |                                   |
| <b>(23) Notaries Approved</b>   |                                   |
| <b>(24) Comments: Non-Agenda Items</b>  |                                   |
| <b>(25) Adjournment</b>   |                                   |



**LOUDON COUNTY COMMISSION  
STATE OF TENNESSEE  
COUNTY OF LOUDON**

**March 05, 2007  
6:00 PM**

**PUBLIC HEARING**

**(1)  
Public  
Hearing**

1. Request consideration of approval of rezoning approximately 30.5 acres of property located at 3060 Old Kingston Road from A-1, Agriculture Forestry District to R-1/PUD, Suburban Residential District with Planned Unit Development Overlay of 2.69 units per acre, referenced by Tax Map 24, Parcel 77.00, 5<sup>th</sup> Legislative District.  
**Jack Parten**, adjoining property owner, came forward to speak in opposition of the Rezoning request.
2. Consideration of approval of rezoning approximately ½ (.50) acres of property located at 21444 Hwy 321 S, from C-1, Rural Center District, to C-2, General Commercial District, referenced by Tax Map 35, part of parcel of 79.00, 3<sup>rd</sup> Legislative district.  
**No one** came forward to speak.
3. Consideration of approval of rezoning approximately 1.37 acres of property located at 19202 Beals Chapel Road from A-2/F-1, Agricultural-Forestry District and Floodplain District to R-1/F-1, Rural Residential District and Floodplain District, referenced by Tax Map 28, Parcel 55.00, 6<sup>th</sup> Legislative.  
**Don Fowler**, owner of property, came forward to speak in favor of this rezoning request
4. Consideration to accept dedication of right of way to Tellico Regional Business Campus, consisting of 5.35 acres of property, located off East Coast Tellico Parkway, referenced by Tax Map 83, parcel 14.00, 3<sup>rd</sup> Legislative District.  
**No one** came forward to speak

**REGULAR MEETING**

**(2)  
Opening  
Of Meeting**

**BE IT REMEMBERED** that the Board of Commissioners of Loudon County convened in regular session in Loudon, Tennessee on the 5<sup>th</sup> day of March, 2007.  
The **Honorable Roy Bledsoe** called the meeting to order.  
**Sheriff Tim Guider** opened Court, led the Pledge of Allegiance to the Flag of the United States of America and gave the invocation.

**(3)  
Roll Call**

Present were the following Commissioners: **Marcus, Meers, Reno, Maples, Franke, Bledsoe, Duff, Park, Gardin and Miller: (10).**  
The following Commissioners were absent: **(0).**  
Thereupon **Chairman Bledsoe** announced the presence of a quorum.  
Also present was the **Honorable Doyle Arp**, County Mayor.

(4) Agenda Adopted	<p><b>Chairman Bledsoe</b> requested that the March 05, 2007 agenda be adopted.</p> <p><b>Commissioner Meers</b> requested that <i>"The agenda to be amended to include Mayor's office writing a letter to CTAS requesting the possibility of a sales tax referendum and report back to commission"</i> with a second by <b>Commissioner Gardin</b>.</p> <p>A <b>motion</b> was made by <b>Commissioner Reno</b> with a second by <b>Commissioner Franke</b> to add the <i>request to CTAS requesting the possibility of a sales tax referendum</i> to the agenda.</p> <p><b>Sheriff Tim Guider</b> requested discussion and possible action on <i>"the appointing of a County Medical Examiner"</i>. After much discussion and on receiving a letter of nomination from a physician in the county, this item will be placed on the next agenda.</p> <p>A <b>motion</b> was made by <b>Commissioner Reno</b> with a second by <b>Commissioner Franke</b> to adopt the agenda with requested addition.</p> <p>Upon voice vote the motion Passed unanimously to adopt the agenda with approved addition.</p>
(5) Minutes for February 05 & 19, 2007 Approved	<p><b>Chairman Bledsoe</b> requested that the February 05 and February 19, 2007 County Commission Meeting minutes be approved and accepted.</p> <p>A <b>motion</b> was made by <b>Commissioner Gardin</b> with a second by <b>Commissioner Meers</b> to adopt minutes as presented.</p> <p>Upon voice vote the motion Passed unanimously.</p>
(6) Comments: Agenda Items	<p><b>Chairman Bledsoe</b> asked for any visitor wishing to address the Commission regarding items on the planned agenda to come forward.</p> <p>No one came forward to speak.</p>
(7) 2007 Ethics Committee Resolution Adopted	<p><b>Doyle Arp, Loudon County Mayor</b>, requested the discussion and possible action on the following items:</p> <p>1. Consideration of adopting a resolution appointing members <b>Constitutional Officer Estelle Herron, Betty Brown, Earlena Maples, David Meers, and Chris Park</b> to the Loudon County 2007 Ethics Committee.</p> <p>A <b>motion</b> was made by <b>Commissioner Miller</b> with a second by <b>Commissioner Marcus</b> to appoint these members to the Loudon County 2007 Ethics committee.</p> <p>Upon voice vote the motion Passed unanimously</p> <p><u><b>Resolution 030507-A</b></u></p>
(8) 2006-2007 Road & Subdivision List adopted	<p>2. Consideration of adopting the 2006-2007 Road &amp; Subdivision List.</p> <p>A <b>motion</b> was made by <b>Commissioner Marcus</b> with a second by <b>Commissioner Meers</b> to adopt this 2006-2007 Road &amp; Subdivision List.</p> <p>Upon voice vote the motion Passed unanimously.</p> <p><u><b>Exhibit 030507-B</b></u></p>
(9) 3060 Old Kingston Road Denied	<p><b>Russ Newman, Loudon County Planning and Community Development</b>, requested discussion and possible action on the following items:</p> <p>1. Consideration of adopting a resolution rezoning approximately 30.5 acres of property located at 3060 Old Kingston Road from A-1, Agriculture Forestry District to R-1/PUD, Suburban Residential District with Planned Unit Development Overlay of 2.69 units per acre, referenced by Tax Map 24, Parcel 77.00, 5<sup>th</sup> Legislative District. (Public Hearing Item #1).</p> <p>A <b>motion</b> was made by <b>Commissioner Duff</b> with a second by <b>Commissioner Park</b> to deny this resolution.</p> <p>Upon voice vote the motion Passed unanimously</p>
(10) 21444 Hwy 321 S. Resolution Adopted	<p>2. Consideration of adopting a resolution rezoning property, ½ (.50) acres located at 21444 Hwy 321 S. from C-1, Rural Center District, to C-2, General Commercial District, referenced by Tax Map 35. part of parcel 79.00, 3<sup>rd</sup> Legislative district. (Public Hearing Item #2)</p> <p>A <b>motion</b> was made by <b>Commissioner Franke</b> with a second by <b>Commissioner Miller</b> to adopt this resolution.</p> <p>Upon voice vote the motion Passed unanimously.</p> <p><u><b>Resolution 030507-C</b></u></p>

(11)  
**19202 Beals  
Chapel  
Resolution  
Adopted**

3. Consideration of adopting a resolution rezoning property, 1.37 acres located on 19202 Beals Chapel Road from A-2/F-1, Agricultural-Forestry District and Floodplain District to R-1/F-1, Rural Residential District and Floodplain District, referenced by Tax Map 28, Parcel 55.00, 6<sup>th</sup> Legislative District. (Public Hearing Item #3)

A **motion** was made by **Commissioner Gardin** with a second by **Commissioner Reno** to adopt this resolution.

Upon voice vote the motion **Passed** unanimously.

**Resolution 030507-D**

(12)  
**Christensen  
Boulevard  
Resolution  
Adopted**

4. Consideration of adopting a resolution to accepting Christensen Boulevard within Tellico Regional Industrial Park. (Public Hearing Item #4)

A **motion** was made by **Commissioner Franke** with a second by **Commissioner Park** to adopt this resolution.

Upon voice vote the motion **Passed** unanimously.

**Resolution 030507-E**

(13)  
**Improvement  
for East  
Coast Tellico  
Parkway  
Resolution  
Adopted**

Standing in for **Pat Phillip, Loudon County Economic Development**

**Commissioner Bob Franke**, requested consideration of adopting a Resolution to apply for additional financial assistance for improvements to East Coast Tellico Parkway.

A **motion** was made by **Commissioner Franke** with a second by **Commissioner Miller** to adopt this resolution.

Upon roll call vote the following Commissioners voted **Aye: Marcus, Meers, Reno, Maples, Franke, Bledsoe, Duff, Park, Gardin and Miller: (10).**

The following Commissioners voted **Nay: (0).**

Thereupon the Chairman announced the motion **Passed: (10-0).**

**Resolution 030507-F**

(14)  
**Lenoir Car  
Works  
Resolution  
Adopted**

Standing in for **Pat Phillip, Loudon County Economic Development**

**Commissioner Shirley Reno**, requested consideration of adopting a Resolution on Lenoir Car Works remediation plan.

A **motion** was made by **Commissioner Reno** with a second by **Commissioner Maples** to adopt this resolution.

Upon roll call vote the following Commissioners voted **Aye: Marcus, Meers, Reno, Maples, Franke, Bledsoe, Duff, Park, Gardin and Miller: (10).**

The following Commissioners voted **Nay: (0).**

Thereupon the Chairman announced the motion **Passed: (10-0).**

**Resolution 030507-G**

(15)  
**General  
Fund Budget  
Amendments  
Approved**

**Tracy Blair, County Director of Accounts and Budgets**, requested discussion and possible action on the following items:

1. Consideration of amendments in the following budgets:

a. 101 County General.

A **motion** was made by **Commissioner Miller** with a second by **Commissioner Gardin** approve these budget amendments.

Upon roll call vote the following Commissioners voted **Aye: Marcus, Meers, Reno, Maples, Franke, Bledsoe, Duff, Park, Gardin and Miller: (10).**

The following Commissioners voted **Nay: (0).**

Thereupon the Chairman announced the motion **Passed: (10-0).**

**Exhibit 030507-H**

(16)  
Highway  
Department  
Fund Budget  
Amendments  
Approved

Consideration of amendments in the following budgets:

b. 131 Highway Dept.

A **motion** was made by **Commissioner Gardin** with a second by **Commissioner Franke** approve these budget amendments.

Upon roll call vote the following Commissioners voted **Aye: Marcus, Meers, Reno, Maples, Franke, Bledsoe, Duff, Park, Gardin and Miller: (10).**

The following Commissioners voted **Nay: (0).**

Thereupon the Chairman announced the motion **Passed: (10-0).**

**Exhibit 030507-I**

(17)  
General  
Purpose  
School Fund  
Budget  
Amendments  
Approved

c. 141 General Purpose School.

A **motion** was made by **Commissioner Gardin** with a second by **Commissioner Duff** to approve these budget amendments.

Upon roll call vote the following Commissioners voted **Aye: Marcus, Meers, Reno, Maples, Franke, Bledsoe, Duff, Park, Gardin and Miller: (10).**

The following Commissioners voted **Nay: (0).**

Thereupon the Chairman announced the motion **Passed: (10-0).**

**Exhibit 030507-J**

(18)  
General Debt  
Service  
Budget  
Amendments  
Approved

d. 151 General Debt Service.

A **motion** was made by **Commissioner Park** with a second by **Commissioner Gardin** to approve these budget amendments.

Upon roll call vote the following Commissioners voted **Aye: Marcus, Meers, Reno, Maples, Franke, Bledsoe, Duff, Park, Gardin and Miller: (10).**

The following Commissioners voted **Nay: (0).**

Thereupon the Chairman announced the motion **Passed: (10-0).**

**Exhibit 030507-K**

(19)  
General  
Capital  
Projects  
Amendments  
Approved

e. 171 General Capital Project.

A **motion** was made by **Commissioner Marcus** with a second by **Commissioner Meers** to approve these budget amendments.

Upon roll call vote the following Commissioners voted **Aye: Marcus, Meers, Reno, Franke, Bledsoe, Duff, Park, Gardin and Miller: (9).**

The following Commissioners voted **Nay: Maples: (1).**

Thereupon the Chairman announced the motion **Passed: (9-1).**

**Exhibit 030507-L**

(20)  
Leasing  
Copier for  
Juvenile  
Center  
Approved

**Leo Bradshaw, Loudon County Director of Purchasing**, requested discussion and possible action on the following item:

1. Consideration of leasing a Copier for Juvenile Center.

A **motion** was made by **Commissioner Maples** with a second by **Commissioner Gardin** to approve the leasing of a copier for the Juvenile Center.

Upon roll call vote the following Commissioners voted **Aye: Marcus, Meers, Reno, Maples, Franke, Bledsoe, Duff, Park, Gardin and Miller: (10).**

The following Commissioners voted **Nay: (0).**

Thereupon the Chairman announced the motion **Passed: (10-0).**

(21)  
Request To  
CTAS for  
Technical  
Advice of a  
Sales Tax  
Referendum  
Approved

**Doyle Arp, Loudon County Mayor**, requested the discussion and possible action on the following item:

1. Authorizing the Mayor's office of writing a letter to CTAS for technical advice on sales tax issues with a possible target date of sales tax referendum, February 2008.

**Commissioner Miller** requested from CTAS where all sales tax dollars are going today and if passed where sales tax dollars will go if referendum is passed.

A **motion** was made by **Commissioner Gardin** with a second by **Commissioner Meers** to write a letter to CTAS for technical advice on sale issue.

Upon voice vote the motion **Passed** unanimously

(22)  
Announcement

**Doyle Arp, Loudon County Mayor** recognized **Gordon Harless**, came forward to announce that TDOT will have a household Hazard Collection March 31<sup>st</sup> from 8:00 am to 1:00 pm. at the Justice Center

**Doyle Arp, Loudon County Mayor** recognized **Edward Headlee**, came forward to announce that PBA will meet March 15<sup>th</sup> @ 7:00pm at Loudon High School. Suggested if any questions give to Edward Headlee to give to PBA. Also if needed a special workshop with PBA, contact Doyle Arp or Leo Bradshaw.

To get a complete download from the web: [www.knoxmpc.org](http://www.knoxmpc.org)

(23)  
Notaries  
Approved

A **motion** was made by **Commissioner Meers** with a second by **Commissioner Park** to approve the following notaries: *Mac K. Tobler, Melinda Brooks, Susanne Denise Anderson, Tammy Emmalene Newbolds, Glenn Alvin McNish, SR, Jeanette C. McNabb, Christopher D. Thomas, James H. Harris, T. A. Leach, and Margie W. Kirkland.*

Upon voice vote the motion **Passed** unanimously.

(24)  
Comments:  
Non-Agenda  
Items

**Chairman Bledsoe** asked for any visitor wishing to address the Commission regarding items not on the agenda to come forward.

**Commissioner Franke** came forward to speak in reference of *Tennessee County News Paper*, with all of the bills that were listed that effected local Government. The Reason why we have "Tennessee County Commission Association".

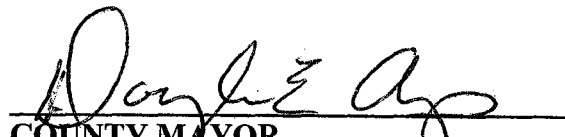
(25)  
Adjournment

There being no further business, a **motion** being duly made and seconded, the March 05, 2007 meeting stood adjourned at 6:55 p.m.

ATTEST:



COUNTY CLERK

  
CHAIRMAN  
COUNTY MAYOR

**RESOLUTION 030507-A**

**2007 LOUDON COUNTY ETHICS COMMITTEE  
RESOLUTION APPROVING OR ACKNOWLEDGING BOARD OR  
COMMITTEE APPOINTMENT BY COUNTY MAYOR**

**WHEREAS**, by statute, and/or intergovernmental agreement and/or County Procedural Regulations, the County Mayor has authority to make certain committee and board appointments; and

**WHEREAS**, appointments are necessary and/or desirable at this time; and


**WHEREAS**, the County Mayor appoints the following as members of

**LOUDON COUNTY ETHICS COMMITTEE**

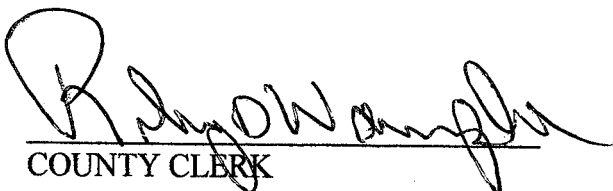
**Appointee**

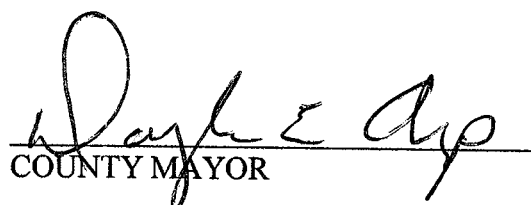
**Estelle Herron, Constitutional Officer  
Betty Brown,  
Earlena Maples,  
David Meers  
Chris Park**

**NOW, THEREFORE, BE IT RESOLVED** that the Loudon County Commission, meeting in regular session assembled this 5<sup>th</sup> day of March, 2007, hereby approves or acknowledges (as appropriate), the said appointments.

  
COUNTY CHAIRMAN

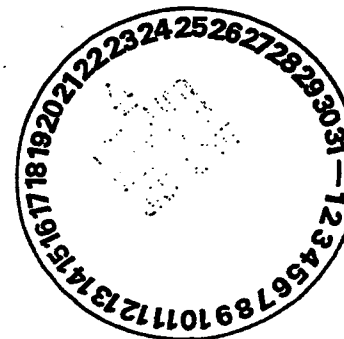
ATTEST:

  
COUNTY CLERK

  
COUNTY MAYOR

## Exhibit B

**LOUDON COUNTY HIGHWAY DEPARTMENT  
2006-2007 ROAD & SUBDIVISION LIST  
R. SEAN GILES ROAD SUPERINTENDENT**



LOUDON COUNTY ROAD LIST	LENGTH	COUNTY OR	CLASS &	BED	RIGHT OF	CURBED SUBDIV	LOCATION OF ROAD
ROAD NAME	MILES	STATE AID	WIDTH	WIDTH	WAY	DEAD END	
A							
ABBOT CROSSING LN	0.9	CO	3-26'	26'	50'	SUBDIVISION	HINES VALLEY
ADKINS ROAD	0.2	CO					
ALLEN ROAD	0.2	CO	3-16'	18'	50'	DEAD END	11 BETWEEN SHAW FERRY/MUDDY CR
ALLEN SHORE DROVE	0.5	CO					OFF HWY 321S NEAR DAM
ALLISON TOWN ROAD	0.6	CO					OFF POND CREEK S OF DRY VALLEY
ALPINE DRIVE	0.1	CO	3-25'	25'	50'	DEAD END	EATONWOOD SUB. OFF 321
ANGLEWOOD DRIVE	0.2	CO	3-23'	23'	50'	CURBED DEAD END	OFF SHAW FERRY S OF HWY 11
ANTIOCH CHURCH ROAD E	2.7	SA			50'		HWY 321 S TO UNITIA ROAD
ANTIOCH CHURCH ROAD W	2.4	CO			50'	DEAD END	HWY 321 S TO TELLICO LAKE
APPLEBY LANE	0.2	CO					
ASHFORD LN	0.1	CO	4-20'	20'	50'		
AVERY CIRCLE	0.7	CO	3-26'	26'	50'	CURBED	MARTEL ROAD
AVERY STREET	0.2	CO	3-26'	26'	50'	CURBED	OFF MARTEL TO AVERY CIRCLE
AXLEY CHAPEL ROAD	2.2	CO			50'		NEL CAMPGROUND AT ECPWKY
B							
BAILEYS ROAD	0.2	CO					OFF 95 TO AXLEY CHAPEL ROAD
BARCLAYS COURT	0.1	CO	26'	26'	50'	CURBED DEAD END	AVALON SUBDIVISION
BARGER ROAD	0.1	CO	3-15'	16'	30'	DEAD END	FROM WILSON RD TO DEAD END
BARKMOOR DRIVE	0.3	CO	25'	25'	50'	DEAD END	OFF HWY 321 NEAR 70
BARR ROAD	0.3	CO					
BARRIER DRIVE	0.2	CO					FROM ENGLE RD TO PORT MADISON
BAT CREEK ROAD	1.1	CO					OFF HARRISON RD AN WEST FORK
BAT CREEK ROAD E	1.3	CO					FROM MONROE LINE TO HWY 72 SO
BAXTER BRIGHT ROAD	0.4	CO					FROM COYOTEE TO DEAD END
BEALS CHAPEL ROAD	2.8	CO	3-18'	18'	50'	DEAD END	OFF MARTEL AT GOLF COURSE
BEALS CHAPEL ROAD	2.8	SA	3-21'	22'	50'		OFF MARTEL
BEALS LANDING LANE	0.2	CO	3-24'	24'	50'	CURBED	OFF BEAL CHAPEL
BEELER LOOP ROAD	0.4	CO					NATIONAL CAMPGROUND ROAD
BELL ROAD N	0.8	CO					NEAR GREEN ACRES IN LOUDON
BELL ROAD S	0.8	CO					FROM WEST LEE HWY TO DEADEND
BELL VIEW ROAD	0.7	CO					JACKSON FERRY TO PARKWAY
BENJAMIN DRIVE	0.2	CO					OFF OLD 95 NEAR HARRISON RD
BIG HILL RD	1.9	CO					FROM 95 TO MEADOW RD W
PAGE 1							

LOUDON COUNTY ROAD LIST	LENGTH	COUNTY OR	CLASS &	BED	RIGHT OF	CURBED SUBDIV	LOCATION OF ROAD
ROAD NAME	MILES	STATE AID	WIDTH	WIDTH	WAY	DEAD END	
<b>B</b>							
BIG SANDY ROAD	6.1	CO			50'		FORM FOSHEE RD TO COUNTY LINE
BILL SMITH ROAD	0.4	CO	16'	20'	50'		OFF 321 N NEAR I-75
BIRD ROAD	1.2	SA	21'	25'	50'		FORM WILLIAMS FERRY TO BUTTER
BISHOP ROAD	1.1	CO					BONORE RD TO WATTS CEMETERY
BLACK ROAD	1	CO					OFF 411 NEAR MONORE CO LINE
BLACKBERRY RIDGE ROAD	0.7	CO	3-26'	26'	50'	CURBED DEAD END	OFF PHELPS OFF BEALS CHAPEL
BLAIR ROAD		CO	8-7'	11'	20'		OFF NEWTON ROAD
BLUE HERRON DRIVE	0.1	CO	3-24'	24'	50'	CURBED DEAD END	MILLERS LANDING TO DEAD END
BLUE SPRINGS ROAD	3.8	SA					OFF OAKLAND RD INTO ROANE CO
BLUE TICK LANE	0.4	CO	13'	21'	50'	DEAD END	OFF BUTTERMILK NEAR KNOXVILLE
BONA VISTA LANE	0.1	CO	3-27'	27'	50'		LITTLE MOUNTAIN ESTATES DEND
BRADSHAW HOLLOW ROAD	0.8	CO	3-16'	16'	50'		OFF PROSPECT CHURCH RD
BRANCH ROAD	1.1	CO					VONORE TO WATT CEMETERY RD
BRANDON DRIVE	0.1	CO	3-16'	16'	50'		MIDWAY RD TO DAVIS DR
BRANDYWINE DRIVE	1.1	CO			50'		HWY 70 NEAR DIXIE LEE JUN
BRANNON ROAD	0.1	CO					FROM OAKLAND TO MCMINN CO
BREAZEAL ROAD	1.9	CO	16'	24'	50'		HOTCHKISS VALLEY TO E HINES VA
BRENTWOOD PLACE ROAD	0.1	CO	3-26'	26'	50'		SHAW FERRY TO DEAD END HWY 11
BREWSTER ROAD	0.1	CO					HOTCHKISS VALLEY RD EAST
BRIGHT ROAD	2.2	CO			50'		FROM JIM DYKE TO POND CREEK RD
BROOK ROAD	1.6	CO					OFF 95 TO MEADOW RD WEST
BROOKVIEW ROAD	0.8	CO					OFF SANDY SHORE FORT LO EST 2
BROWDER HOLLOW ROAD	1.6	CO			50'		HWY 11W TO HARRISON RD
BROWDER SCHOOL ROAD	0.2	CO					OFF HWY 11W AND BACK TO HWY 11
BURL ANDERSON ROAD	0.2	CO					OFF OAKLAND NEAR MONORE
BURNETTE CIRCLE	0.4	CO					OFF EAST LEE HWY AN ENGLE RD
BUSTER BLVD	0.1	CO	4-12'	16'	30'	DEAD END	OFF JIM CONNER OFF MARTEL RD
BUTTERMILK ROAD	5.1	SA	3-21'	28'	50'		FROM OLD 95 TO KNOX CO LINE
BUTTERMILK ROAD W	0.5	CO	3-28'	33'	50'		FROM 321 TO ROANE CO LINE
<b>C</b>							
C & C ROAD	0.2	CO				DEAD END	OFF HICKORY CREEK RD
CABE ROAD	0.5	CO					OFF MORGANTON BWT CRAIGS/FIPP
CALDWELL ROAD	1.3	CO			50'		FROM STEEKEE AT CO LINE MONORE
PAGE 2							

LOUDON COUNTY ROAD LIST	LENGTH	COUNTY OR	CLASS &	BED	RIGHT OF	CURBED SUBDIV	LOCATION OF ROAD
ROAD NAME	MILES	STATE AID	WIDTH	WIDTH	WAY	DEAD END	
C							
CALLOWAY CIRCLE	0.8	CO	3-26'			CURBED	OFF MARTEL
CALLOWAY DRIVE	0.5	CO	3-26'			CURBED	MARTEL ESTATES
CALLOWAY ROAD	2.6	CO			50'		FROM WEST LEE HWY TO FORK CR
CAMERON LANE	0.1	CO	3-22'			CURBED DEAD END	OAKWOOD ESTATES TO DEAD END
CARDINAL VIEW COURT	0.1	CO	3-26'	26'	50'	CURBED DEAD END	AVALON SUBD
CARWELL CHAPEL ROAD	1.5	CO	4-14'	18'	50'		HINES VALLEY NEAR WHEAT
CARPENTER LOOP	1.1	CO					OFF PKWY NEAR NTL CAMPGROUND
CARTER ROAD	0.4	CO					OFF BIG HILL RD OFF HWY 95
CARTER'S CHAPEL ROAD	1.3	SA	3-19'	23'	50'		HINE VALLEY TO HWY 70 TO PAW
CASEY LANE	0.1	CO	3-22'	22'	50'		OAKWOOD ESTATES TO DEAD END
CATTLEMAN'S DRIVE	0.2	CO	3-25'	25'	50'		OFF RAWHIDE TRAIL IN N FORTY EST
CECIL WEBB ROAD	0.5	CO	3-24'	24'	50'		OFF WILLIAMSON DR IN INDUSTRIAL
CEDAR CIRCLE	0.6	CO	3-25'	25'	50'	CURBED - SUBDIV	OFF MARTEL CEDAR HILLS SUBD
CEDAR PARK DRIVE	0.2	CO	4-16'	18'	50'	DEAD END	FROM HWY 11E TO DEAD END
CEMETERY ROAD	0.4	CO					OFF STEEKEE RD
CHELSEA CIRCLE	0.1	CO	3-25'	25'	50'	CURBED-DEADEND	AVALON SUBD
CHILI LANE	0.1	CO					OFF POPLAR SPRINGS RD NEAR DAV
CHRISMAN ROAD	0.2	CO	3-25'	25'	50'		OFF HWY 11E AT HIGHLAND PARK
CIRCLE DRIVE	0.4	CO					OFF STEEKEE RD NEAR WATKINS
CLARKE ROAD	0.4	CO					OFF SPRING RD OFF HARRISON RD
CLAY HOLLOW ROAD	1.1	CO			50'		FROM BLUE SPRINGS TO ROANE CO
CLEAR BRANCH ROAD N	0.5	CO					OFF 72S ACROSS FROM GET GOOD
CLEAR BRANCH ROAD S	0.3	CO					OFF 72 SOUTH
CLEAR COVE COURT	0.1	CO	3-24'	24'	50'	CURBED-DEADEND	OFF LAKE CREST RD
CLINCHVIEW DRIVE	0.1	CO					OFF HWY 321 N NEAR 140
CLOYD'S CREEK ROAD	0.2	CO					OFF MEADOW RD N NEAR GRyder
CLUB DRIVE	0.4	CO				CURBED	FROM HUFFS FERRY N TO DEAD END
COLUMBUS DRIVE	1.2	CO				CURBED	
CONKINNON DRIVE	1.3	CO	3-24'	24'	50'	CURBED	CONKINNON SUBDIVISION
CONMASTER ROAD	0.3	CO	3-22'	22'	50'		OFF PARKWAY
COOK DRIVE	0.3	CO					FROM STEEKEE SCHOOL RD
COPE ROAD	0.2	CO	3-14'	14'	30'		OFF 411 NEAR SHULTZ LN (GB)
CORDOVA LANE	0.1	CO				CURBED-SUBDIV	CORDOVA SUBD OFF OLD 95
PAGE 3							

LOUDON COUNTY ROAD LIST	LENGTH	COUNTY OR	CLASS &	BED	RIGHT OF	CURBED SUBDIV	LOCATION OF ROAD
ROAD NAME	MILES	STATE AID	WIDTH	WIDTH	WAY	DEAD END	
<b>C</b>							
CORINTH CHURCH ROAD	1.5	CO			50'		FROM CALLOWAY TO STEEKEE
CORINTH ROAD	1.4	CO			50'		STEEKEE RD TO STEEKEE SCHOOL R
CORNETT ROAD	0.4	CO					OFF HOTCHKISS VALLEY N HAPPY H
COSTNER ROAD	0.2	CO	4-12'	12'	30'		STEEKEE CREEK TO DEAD END
COULTER SHOALS CIRCLE	0.7	CO	3-19'	19'	50'		OFF LAKELAND DR NEAR KNOX
COVENANT CIRCLE	0.4	CO	3-24'	24'	50'	CURBED	OFF HWY 11E
COVE VIEW LANE	0.1	CO	3-23'	23'	50'	CURBED DEADEND	OFF POINT HARBOR DR BEALS CH
COX ROAD	0.2	CO	3-17'	17'	50'		FROM E LEE HWY TO WEBB DR
COYTEE ROAD	1.3	CO	3-18'	18'	50'	DEADEND	OFF AXLEY CHAPEL TO DEAD END
CRANFIELD LANE	0.1	CO	3-16'	16'	50'	CURBED DEADEND	OFF 70 E NEAR SMITH VALLEY RD
CREEKWOOD COURT	0.1	CO	3-24'	24'	50'		OFF RIVER POINT DR
CRESCENT DRIVE	0.2	CO	3-18'	18'	50'		FROM E LEE HWY TO DAILEY AVE
CRESS LANE	0.3	CO	3-17'	19'	50'	DEADEND	OFF MARTEL RD
CRESTVIEW CIRCLE	0.6	CO	3-26'	26'	50'	CURBED	MARTEL ESTATES
CRESTVIEW DRIVE	0.1	CO	3-18'	18'	50'		OFF FORD RD
CROCK ROAD	0.9	CO					OFF LOUDON RIDGE TO SUGARLIMB
CRUZE ROAD	0.9	CO	3-22'	22'	50'	DEADEND	OFF ANTIOCH CHURCH E
CUDDIE LANE	0.1	CO	3-17'	17'	50'		OFF WEBB DRIVE
CUSICK CIRCLE	0.6	CO	3-19'	21'	50'		OFF 11 NEAR OLD STAGE/JUNCTION
CUSICK LANE	0.1	CO	3-19'	21'	50'	DEADEND	OFF CUSICK CIRCLE
<b>D</b>							
DAILEY AVE	1.1	CO	3-16'	16'	30'		FROM BLAIR BEND DR TO WEBB DR
DAIRY LANE	0.3	CO				CURBED	OFF MUDDY CREEK (SILO ACRES)
DAVIS DAIRY ROAD	0.3	CO	3-26'	26'	50'		OFF SUNNYSIDE N/REED SPRINGS
DAVIS DRIVE	0.3	CO	3-15'	16'	30'	DEADEND	OFF MIDWAY RD
DAVIS FERRY ROAD	2.8	SA					FROM VONORE RD TO PKWY
DAVIS RIDGE ROAD	0.4	CO					FROM BROWDER SCHOOL/LO RIDGE
DAVIS LANE	0.9	CO	3-18'	30'	50'	DEADEND	OFF BUTTERMILK N OF 140
DAWSON ROAD	0.8	CO					FROM ERIE RD INTO ROANE CO'
DEADEND ROAD	0.5	CO					
DEATON ROAD	0.3	CO	3-13'	13'	30'		OFF BEALS CHAPEL RD
DEERFIELD COURT	0.1	CO	3-26'	26'	50'	DEADEND	AVALON
DEERFIELD LANE	0.5	CO				CURBED DEADEND	
PAGE 4							

LOUDON COUNTY ROAD LIST	LENGTH	COUNTY OR	CLASS &	BED	RIGHT OF	CURBED SUBDIV	LOCATION OF ROAD
ROAD NAME	MILES	STATE AID	WIDTH	WIDTH	WAY	DEAD END	
D							
DERBY CHASE DRIVE		CO	3-22'	22'	50'		
DEWITT DRIVE	0.4	CO	3-15'	16'	30'	DEADEND	OFF FORD RD
DIXIE LEE CIRCLE	0.7	CO					OFF WHEELER DR NEAR JUNCTION
DIXIE LEE LANE	0.1	CO				DEADEND	OFF WHEELER DR NEAR JUNCTION
DIXON ROAD	0.7	CO	3-22'	22'	50'		OFF OLD STAGE RD - KNOX CO
DOGWOOD LANE	0.1	CO	4-16'	20'	50'	DEADEND	OFF MIMOSA ST OFF FORD RD
DOGWOOD LANE E	0.1	CO	3-24'	24'	50'	CURBED DEADEND	FROM OAKWOOD EST TO DEADEND
DONNA DRIVE	0.4	CO	4-16'	23'	50'		OFF HICKORY CREEK RD
DONALDSON LIGHT LANE	0.2	CO				DEADEND	OFF ANTIOCH CH RD E N/ ALEXANDER
DOTSON HILL ROAD	0.3	CO					FROM AXLEY CHAPEL TO DEADEND
DOTSON ROAD	0.3	CO					BETWEEN MAPLE ST AND TRIGONIA
DOWNING COURT	0.1	CO	3-26'	26'	50'	CURBED DEADEND	AVALON
DRIFTWOOD COURT	0.1	CO	3-24'	24'	50'	CURBED DEADEND	MILLERS LANDING TO DEAD END
DRY BRANCH ROAD	0.3	CO					OFF POND CREEK RD NEAR I76
DRY RIDGE ROAD	1.7	CO					FROM DRY VALLEY TO ROBERSON S
DRY VALLEY ROAD	2.4	SA					OFF POND CREEK RD
DUGGAN ROAD	0.1	CO				DEADEND	FROM HARMON TO DEADEND
DUNCAN ROAD	0.6	CO	4-13'	13'	20'		OLD MIDWAY TO MUDDY CREEK
DUNRIDGE ROAD	0.1	CO	3-26'	26'	50'	CURBED DEADEND	OFF PHELPS OFF BEALS CHAPEL
DUNSMORE ROAD	0.3	CO	4-13'	17'	30'	DEADEND	OFF CARDWELL CHAPEL
DUTTON ROAD	1.1	CO					OLD KINGSTON TO PINEGROVE/PROV
E							
EAST COAST TELICO PKWY	6.1	SA			50'		HWY 411 TO AXLEY CHAPEL
EASTER DRIVE	0.2	CO					BETWEEN VONORE AND SIMPSON
EASTER RIDGE ROAD	0.3	CO	3-17'	20'	50'		OFF LAKEVIEW NEAR MARTEL
COMMERICAL PARK DR	2.5	CO	3-24'	24'	50'		INDUSTRIAL PARK LOUDON
EBLEN ROAD	0.2	CO					FROM DUTTON TO OLD KINGSTON
ECHO HOLLOW ROAD	0.4	CO	3-18'	18'	50'		FROM WHITE WING TO WILLIAMS F
EDGE LANE	0.2	CO					
EDITH LANE	0.5	CO	3-15'	20'	50'		OFF HINES VALLEY/EATON FOREST
EDWARDS SCHOOL ROAD	0.5	CO					OFF JIM DYKE W OF PROSPECT
EL CAMINO LANE	0.4	CO	3-22'	22'	50'	DEADEND	OFF WATT RD N OF I40
ELLIS ROAD	0.3	CO	3-19.5'	19'	50'		FROM OLD 95 TO OUTER DRIVE
PAGE 5							

LOUDON COUNTY ROAD LIST	LENGTH	COUNTY OR	CLASS &	BED	RIGHT OF	CURBED SUBDIV	LOCATION OF ROAD
ROAD NAME	MILES	STATE AID	WIDTH	WIDTH	WAY	DEAD END	
E							
ENGLE ROAD	0.4	CO	3-19'	19'	50'		E LEE HIGHWAY TO DEAD END
ERIE ROAD	2.6	CO	3-18'	18'	50'		FORM CLAY HOLLOW TO MANTOOTH
ESTES ROAD	1.4	CO	4-18'	23'	50'		FROM PINE GROVE/PROV TO CO LI
EVERGREEN CIRCLE	0.2	CO					OFF RODNEY RD NEAR SCENIC DR
F							
FAIRVIEW DRIVE	0.1	CO	3-16'	18'	50'	DEADEND	
FAIRVIEW ROAD	1.7	CO					OFF HWY 321 S
FAIRWAY DRIVE	0.2	CO				CURBED	OFF HUFFS FERRY IN RIVERVIEW SUB
FISHER LANE	1.8	CO					AXLEY CHAPEL TO GLENDALE
FISHERMAN COVE LANE	0.2	CO					
FLATWOODS ROAD	1.6	CO					FROM HOLT TO NEW HOPE ERIE
FORD ROAD	1.7	SA	3-20'	20'	50'		OFF HWY 11E TO HWY 70
FORE DRIVE	0.1	CO				CURBED	RIVERVIEW GOLF SUBDIVISION
FOREST HEIGHTS CIRCLE	1	CO					OFF MUDDY CREEK
FOREST HILLS DRIVE	0.1	CO	3-20'	20'	50'		FROM FOREST HEIGHTS CIRCLE TO E
FORK CREEK ROAD	3	CO					WEST LEE HWY TO STEEKEE
FORK ROAD	0.1	CO					MEADOW W TO BLOUNT CO LINE
FORTNER ROAD	0.1	CO	4-10'	10'	30'		OFF BELL VIEW OFF 95
FOSHEE ROAD	1.5	CO					BIG SANDY TO STOCKTON VALLEY
FOSTER DRIVE	0.4	CO	3-26'		50'	CURBED	OFF MARTEL (MARTEL ESTATES E)
FOSTER ROAD	1.2	CO					LOUDON RIDGE TO BROWDER HOLLO
FOUNTAIN HEAD COURT	0.1	CO	3-26'	26'	50'	CURBED DEADEND	AVALON
FOUTE TOWN ROAD	0.2	CO			30'	DEADEND	OFF MARTEL NEXT TO CEMETERY
FOX HUNTER ROAD	0.4	CO			30'	DEADEND	OFF BEALS CHAPEL TO DEADEND
FRANKLIN ESTATES LANE	0.4	CO	3-25'	25'	50'		GREEN BACK
FRIENDSHIP ROAD	0.5	CO					OFF 321N TO HWY 70
FRIENDSVILLE ROAD	2.5	CO			50'		321 S TO BIG HILL RD
G							
GALLAHER ROAD	0.3	CO	4-11'	11'	27'		
GALYON DRIVE	0.1	CO			30'		HWY 11 TO BROWDER SCHOOL RD
GALYON ROAD	0.6	CO					POND CREEK NEAR DRY VALLEY
GAP ROAD	1.1	CO			50'		OFF CORNETT
GASTON ROAD	0.2	CO					
PAGE 6							

LOUDON COUNTY ROAD LIST	LENGTH	COUNTY OR	CLASS &	BED	RIGHT OF	CURBED SUBDIV	
ROAD NAME	MILES	STATE AID	WIDTH	WIDTH	WAY	DEAD END	
<b>G</b>							
GENTRY DRIVE	0.2	CO	3-16'	16'	30'		FROM RAUSIN TO STEEKEE CREEK
GENTRY ROAD	0.8	CO	3-16'	16'	30'		OFF HINES VALLEY
GET GOOD HOLLOW ROAD	1.8	CO			50'		OFF STEEKEE TO HWY 72 S
GIFFIN CIRCLE	0.4	CO					OFF MATLOCK BEND EAST
GILBERT LANE	0.5	CO				DEAD END	OFF UNITIA RD
GILES ROAD	0.2	CO	3-18.5'	18'	50'		OFF TINNEL NEAR HIGHLAND PARK
GLENDALE COMMUNITY RD	1.5	CO					OFF 95 NEAR HWY 321 INERSECTION
GLEN MAR DRIVE	0.4	CO	3-24'	24'	50'	CURD-DE	
GRANVIEW DRIVE (LC)	0.3	CO	3-26'	26'	50'	CURB	OFF MARTEL IN MARTEL SUBDIVI.
GRANVIEW DRIVE (LO)	0.4	CO					GET GOOD HOLLOW TO STEEKEE SC
GRAPE TREE COURT		CO	3-26'	26'	50'	CURBED/DEADEND	AVALON SUBDIVISION
GREEN DRIVE	0.5	CO					STEEKEE CREEK TO GRIMES
GRIFFITS KEEP COURT	0.2	CO	3-23'	23'	50'	CURBED	E COAST PKWY TO DEADEND
GRIMES ROAD	1.9	CO					GREEN ACRES SUB TO CORINTH CH
GRUBB LANE	0.1	CO					OFF OVERLOOK NEAR OLD 95
GRUBB ROAD	0.8	CO	4-14'	20'	50'		BUTTERMILK TO WOODLAWN
GRYDER LANE	0.6	CO	3-19'	19'	50'		OFF MEADOW W BT FORK/SHEETS H
<b>H</b>							
HACKNEY CHAPEL ROAD	0.7	CO					FROM ANTIOCH E TO VINEYARD
HALL ROAD	1	CO	3-22'	29'	50'		PINE GROVE/PROV TO ROANE CO
HALL STREET	0.7	CO	4-16'				FROM HWY 11E TO HIGHLAND PARK
HAMMONTREE LANE	0.3	CO					OFF BROOK RD
HAPPY HOLLOW ROAD	2.7	SA			50'		FROM OLD 95 TO HOTCHKISS VAL
HARBOR POINT COURT	0.1	CO	3-24'		50'	CURB-DE	LAKECREST DR TO DE MILLERS LAN
HARBOUR PLACE	0.1	CO	3-23'		50'	CURB-DE	POINT HARBOR SUBDIVISION
HARBOUR VIEW DRIVE	0.7	CO					OFF BEALS CHAPEL
HARDIN DRIVE	0.4	CO					HARDIN ESTATES OFF MARTEL
HARMON LANE	0.2	CO	3-20'	25'	50'	DEADEND	OFF 321N
HARRIS ROAD	1.5	CO					POND CREEK TO WASHINGTON PK
HARRISON LANE	1	CO					OFF HWY 70 & 11 TO JUNCTION
HARRISON ROAD	2.4	CO					OFF 95
HATLEY DRIVE	0.3	CO					FROM HWY 11 TO DEAD END
HEATHER LANE	0.1	CO					

LOUDON COUNTY ROAD LIST	LENGTH	COUNTY OR	CLASS &	BED	RIGHT OF	CURBED SUBDIV	LOCATION OF ROAD
ROAD NAME	MILES	STATE AID	WIDTH	WIDTH	WAY	DEAD END	
<b>H</b>							
HEATON ROAD	0.3	CO	4-13'	14'	30'	DE	NTL CAMPGROUND TO DEADEND
HEWINS ROAD	0.3	CO					SHAW FERRY NEAR SIMPSON E
HICKEY DRIVE	2.6	CO					
HICKORY CREEK ROAD	2.6	SA	3-21'	28'	50'		OFF HWY 70
HICKORY VALLEY ROAD	0.4	CO					FROM 321 S TO UNITIA RD
HIDDEN VALLEY LANE	0.1	CO	4-16'	20'	50'	DE	FORD RD
HIDDEN VALLEY ROAD	0.1	CO	4-16'	20'	50'		OFF TOWN CREEK ON FORD RD
HIGHLAND AVENUE	0.6	CO					STEEKK RD
HILLSBOROUGH LANE	0.2	CO	3-22'		50'		
HILLTOP DR	0.5	CO	3-24'		50'		OFF HWY 11 NEAR LENOIR CITY
HINES VALLEY ROAD	5.9	SA	3-26'	32'	50'		OFF HWY 70
HIRST CIRCLE	0.7	CO	3-24'		50'	CURBED	MAHLON PLACE SUBDIVISION
HOFFMAN DRIVE	0.2	CO					OFF OUTER DR TO ELLIS
HOFFMAN LANE	0.1	CO					OFF SNODDERLY
HOLBROOK AVENUE	0.2	CO					ACROSS FROM FRIENDSHIP/321
HOLLAND TRAIL	0.7	CO	4-19'	23'	50'		HARDIN ESTATE
HOLT ROAD	0.6	CO					OFF STOCKTON VALLEY TO OAKLA
HOPE CREEK ROAD	0.9	CO				DE	OFF BUTTERMILK NEAR DAVIS LN
HOTCHKISS VALLEY LANE	0.2	CO	3-25'	30'	50'	DE	NEAR SUGAR LIMB RD
HOTCHKISS VALLEY ROAD E	4.6	SA	3-20'	33'	50'		FROM OLD 95 TO PINE GROVE/PROV
HOTCHKISS VALLEY ROAD W	1.7	CO	3-20'	29'	50'		SOUTH SIDE OF INTERSTATE
HOUK ROAD	0.2	CO	4-9'	20'	50'	DE	OFF HINES VALLEY
HUBBARD ROAD	1.8	CO	4-16'	36'	50'	DE	LOUDON RIDGE RD
HUFFS FERRY ROAD	1.8	CO	3-20'	35'	50'		HOTCHKISS VALLEY TO RIVER
HUNTSVILLE HOLLOW ROAD	1.1	CO					OFF HWY 11 NEAR W LENOIR CITY
HUTTON ROAD	0.6	CO	4-15'	15'	30'		OFF 95 S NEAR 411
<b>I</b>							
INDEPENDENCE LANE	0.1	CO	4-12'	14'	30'		MARTEL RD TO DEADEND
INTERSTATE LANE	0.6	CO	4-16'	26'	50'	DE	ACROSS FROM HOTCHKISS V WEST
IRENE LANE	0.3	CO	3-24'	24'	50'		RITCHEY RD TO DEAD END
<b>J</b>							
JACKSON BEND ROAD	1.5	CO					OFF 321 S NEAR DAM
JACKSON CEMETERY ROAD	0.4	CO					PWKY TO DEAD END
PAGE 8							

LOUDON COUNTY ROAD LIST	LENGTH	COUNTY OR	CLASS &	BED	RIGHT OF	CURBED SUBDIV	LOCATION OF ROAD
ROAD NAME	MILES	STATE AID	WIDTH	WIDTH	WAY	DEAD END	
<b>J</b>							
JACKSON FERRY ROAD	1.6	CO					FROM 95S OF NTL CAMPGR TO PKY
JACOBS ROAD	0.5	CO					NEAR NT ZION CHURCH
JAMES DRIVE	0.3	CO	3-26'	26'	50'	CURB -DE	OFF AVERY CR
JESSIE LANE	0.2	CO	3-27'	27'	50'	CURB	OFF MISTY RIDGE OFF VIRTUE
JIM CONNER ROAD	0.2	CO	4-12'	16'	30'	DE	OFF MARTEL BETWEEN AVERY/HAR
JIM DYKE ROAD	1.5	CO					PROSPECT CH TO STOCKTON VAL
JOHNSON CHURCH ROAD	0.3	CO					BLUE SPRINGS TO ROANE CO
JULIP LANE	0.4 - 1040	CO	2-18'	18'	50'		
<b>K</b>							
KEATON ROAD	0.3	CO				DE	OFF UNITIA RD
KEENER LANE	0.3	CO	4-12'	12'	20'	DE	OFF LAKELAND DR NEAR SUBDIVIS
KENNY BROOK LANE	0.2	CO					OFF BROOK RD E OF HAMMONTREE
KEVIN LANE	0.3	CO	3-24'	24'	50'	CURBED	
KIMBRELL ROAD	0.7	CO					BIG HILL RD TO DEADEND
KING ROAD	0.8	CO					NTL CAMPGROUND TO BELLVIEW
KISER LANE	0.3	CO					
KISER ROAD (LO)	1.1	CO					
KISER STATION ROAD (GB)	0.8	CO					
<b>L</b>							
LAKE COVE ROAD	0.3	CO	3-24'	24'	50'	CURBED	OFF MILLER RD
LAKE CREST DRIVE	1	CO	3-24'	24'	50'	CURBED	OFF RIVER POINT DR
LAKE DRIVE	0.7	CO					OFF MATLOCK BEND E
LAKE FOREST DRIVE	0.2	CO	3-21'	21'	50'	DE	OFF LAKELAND
LAKE HARBOUR DRIVE	0.4	CO	3-24'	24'	50'	CURB - DE	OFF LAKE CREST (MILLERS LAND)
LAKE POINT DRIVE	0.1	CO	3-18'	18'	50'	CURB - DE	OFF WILKERSON OFF PALMER
LAKELAND DRIVE	2.7	SA	3-20'	21'	50'		OFF BEALS CHAPEL TO KNOX CO
LAKELAND FARMS ROAD	0.4	CO	4-12'	14'	30'	DE	E OF LAKE FOREST DRIVE
LAKESIDE DRIVE	1.4	CO	3-18'	18'	50'		OFF BEALS CHAPEL TO PHELPS RD
LAKEVIEW ROAD	1.7	CO	3-23'	23'	50'		MARTEL TO BEALS CHAPEL
LAKEWOOD DRIVE	0.6	CO					OFF MATLOCK BEND E
LANE ROAD	0.2	CO	3-16'	17'	30'	DE	OFF 11 NEAR FORD RD
LARUE ROAD	0.1	CO					E LEE HWY TO BURNETT CR
LAURA LANE	0.1	CO					OFF UNITIA NEAR BLOUNT
PAGE 9							

LOUDON COUNTY ROAD LIST	LENGTH	COUNTY OR	CLASS &	BED	RIGHT OF	CURBED SUBDIV	LOCATION OF ROAD
ROAD NAME	MILES	STATE AID	WIDTH	WIDTH	WAY	DEAD END	
<b>L</b>							
LEE HI LANE	0.1	CO					OFF 11E OF HALL ST TO DEADEND
LEE SHIRLEY ROAD	0.2	CO					FROM TRIGONIA TO BLOUNT
LEEPERS FERRY ROAD	0.5	CO					OFF ROAX NEAR BLOUNT
LEEPER PARKWAY	0.2	CO	3-26'	26'	50'	CURB	OFF 11 TO AVERY ST
LENNOX COURT	0.1	CO	3-26'	26'	50'	CURB - DE	AVALON
LENOIR DRIVE	0.1	CO	3-26'	26'	50'	CURB	FORT LOUDON ESTATES
LEONA DRIVE	0.3	CO					OFF SCENIC DR NEAR DAM 321 S
LETTERMAN ROAD	0.1	CO					HWY 70 NEAR I75 OVERPASS
LINDER LANE	0.1	CO	3-24'	24'	50'	CURB -DE	OFF HWY 70 NEAR MUDDY CREEK
LINGENFELTER LANE	0.1	CO	3-20'	20'	50'	CURB -DE	
LITTLE MOUNTAIN LANE	0.5	CO	26.4'	26'	50'	SUB/CURB/DE	LITTLE MNT ESTATES
LITTLE SHUBERT ROAD	0.1	CO					OFF JIM DYKE
LITTLE VALLEY ROAD	1.8	CO					OFF POPLAR SPRINGS N/DAVIS FER
LONG COVE COURT	0.3	CO	3-24'	24'	50'	CURB - DE	OFF LAKE COVE RD
LONG ROAD	0.2	CO					OFF HACKNEY CHAPEL
LOU GODDARD LANE	0.3	CO					FORM TARWATER TO BLOUNT CO
LOUDON DRIVE		CO					
LOUDON RIDGE ROAD	2.6	SA	3/19'	31'	50'		OFF SUGARLIMB/ HARRISON RD
LUCY LANE		CO	3-15'	15'	30'		
LYNN ROAD	1.8	CO					OFF STOCKTON VALLEY
LYNNWOOD DRIVE	0.7	CO					N TRIGONIA TO LEE SHIRLEY RD
<b>M</b>							
MALONE ROAD (LC)	0.9	CO					OFF HINES VALLEY
MALONE ROAD (LO)	1.2	SA					HWY 72S TO WATKINS
MANIS ROAD	0.6	CO					OFF 321 BETWEEN EATONS & I40
MAPLE HILL ROAD	1.4	SA					OFF DAVIS FERRY RD
MAPLE HILLS LANE	0.4	CO	3-24'	24'	50'	CURBED	MAPLE HILL HEIGHTS SUBDIVISION
MAPLETREE LANE	0.1	CO	3-24'	24'	50'	CURB - DE	MARTEL/OAKWOOD ESTATES
MARBLE BLUFF ROAD	1.3	SA			50'		OFF 72 N
MARTEL ROAD	4.2	SA	3-21'	21'	50'		FROM 11 E NEAR 321 TO KNOX CO
MARKWOOD ROAD	1	CO					FROM WADE RD TO MONORE CO
MASHBURN DRIVE	0.4	CO	4-13'	13'	30'	DE	OFF BEALS CHAPEL N/ LAKELAND
MATLOCK BEND ROAD	4.7	CO					FROM 72 AT TN RIVER
PAGE 10							

LOUDON COUNTY ROAD LIST	LENGTH	COUNTY OR	CLASS &	BED	RIGHT OF	CURBED SUBDIV	LOCATION OF ROAD
ROAD NAME	MILES	STATE AID	WIDTH	WIDTH	WAY	DEAD END	
M							
MATLOCK BEND ROAD E	1.9	CO					FROM RIVER RD TO CORPRATE PARK
MATLOCK ROAD	0.6	CO					WILLIAMS FERRY TO ECHO HOLLOW
MATLOCK SHORES ROAD		CO	3-15'	15'	30'		FROM RIVER RD TO CORPRATE PARK
MATLOCK TRAIL	0.3	CO					2ND LEFT OFF MATLOCK BEND
MAYO ROAD	0.8	CO	3-14'	14'	30'		OFF 72 S NEAR VILLIAGE
MAYO ROAD SOUTH	0.2	CO					ELOHI LN TO DEAD END
MCDANIEL LANE	0.2	CO	4-16'	20'	50'	DE	OFF FORD RD NEAR MIMOSA
MCGHEE ROAD	0.6	CO					NILES FERRY TO TRIGONIA
MCKELVEY ROAD	0.7	CO					OFF PKWY NEAR COYTEE
MEADOW DRIVE	0.3	CO	3-26'		50'	CURBED	FROM CRESTVIEW CR MARTEL SUB
MEADOW ROAD N	2.6	SA					OFF MEADOW W TO BLOUNT CO
MEADOW ROAD W	2.7	SA					HWY 321 S AT BLOUNT CO LINE
MEALER ROAD	0.6	CO					OFF 70 TO HINES VALLEY
MIDWAY ROAD	0.8	CO	3-17'	19'	50'		OFF 11 S OF JUNCTION
MILLERS COVE LANE	0.3	CO				CURBED	OFF STEEKEE RD NEAR FORK CREEK
MILLER ROAD	0.3	CO	3-24'			CURBED	OFF BEALS CHAPEL TO LAKELAND
MILLER ROAD	0.4	CO	4-12'				
MIMOSA STREET	0.1	CO	4-16'	20'		DE	OFF FORD RD
MISTY RIDGE DRIVE	0.3	CO	3-27'			CURBED	OFF VIRTUE E OF MUDDY CREEK
MISTY RIDGE DRIVE (ADD ON	0.3	CO	3-24'	24'	50'	CURBED	OFF VIRTUE E OF MUDDY CREEK
MISTY VIEW DRIVE	0.2	CO				CURBED	OFF RIVERVIEW DR NEAR HUFF FERR
MONTCREST DRIVE	0.1	CO					LITTLE MOUNTAIN ESTATES DEND
MONTERY DRIVE	0.3	CO	3-24'	24'	50'		1ST LEFT OFF CORPORATE PARK
MONTEICELLO DRIVE	0.1	CO	3-24'	24'	50'		FOOTHILLS RD TO DEADEND
MONTOOTH ROAD	0.5	CO					FROM OAKLAND BACK TO ERIE
MONUMENT STREET	0.1	CO	4-12'	12'	20'		OFF 11 E
MONTVIEW ROAD	0.7	CO	3-25'	25'	50'		OFF 321 N NEAR MANIS
MORGANTON CEMETERY RD	0.5	CO					
MORGANTON ROAD	4.2	SA					BLOUNT TO PKWY
MORTON LANE	0.2	CO	3-14'	14'	30'	DE	OFF MORTON RD N/ VIRTUE
MORTON ROAD	1.3	CO	3-16'	16'	50'		FROM MARTEL TO VIRTUE N/KNOX
MOSS ROAD	0.8	CO					OFF BLUE SPRINGS /MCMINN CO
MOUNTAIN CREST LN	0.2	CO	3-25'	25'	50'		
PAGE 11							

LOUDON COUNTY ROAD LIST	LENGTH	COUNTY OR	CLASS &	BED	RIGHT OF	CURBED SUBDIV	LOCATION OF ROAD
ROAD NAME	MILES	STATE AID	WIDTH	WIDTH	WAY	DEAD END	
<b>M</b>							
MOUNTAIN VIEW ROAD	0.5	CO					OFF SPRING OFF HARRISON
MT. ZION CHURCH ROAD	0.5	CO					FROM DAVIS FERRY TO MAPLE HILL
MUDDY CREEK ROAD	1.4	SA	3-23'	26'	50'		FROM MARTEL TO HWY 11
MURRY'S CHAPEL ROAD	0.9	CO					FROM OAKLAND TO MONROE
MYERS ROAD (LC)	0.5	CO					TOWN CREEK W TO SIMPSON
MYRTLE ROAD	0.4	CO					OFF RITCHIE TO DEAD END
<b>N</b>							
NATIONAL CAMPGROUND RD	1.6	SA					FROM 95 TO PKWY
NEELEY ROAD	0.1	CO	4-10'	12'	20'	DE	OFF 11E NEAR SHAW FERRY
NESS LANE	0.3	CO					FROM 95 TO HAMMONTREE
NEW HOPE ROAD	2.3	CO					FROM POND CREEK TO MONROE
NEW MACEDONIA ROAD	0.2	CO	3-18'	18'	50'		OFF STEEKEE INTO MONROE
NEWBERRY DRIVE	0.5	CO					OFF YEDEAR RD NORTH END
NEWTON ROAD	0.2	CO					BETW/HIGHLAND AVE/RIVERVIEW RD
NICHOLS ROAD WITH 200'EX	0.4	CO	4-13'	14'	30'	DE	OFF NORTHSHORE DR TO KNOX
NILES FERRY ROAD	2.1	CO					FROM 411 BACK TO 411
NORTH HOLSTON DRIVE	0.4	CO					OFF 321 S RUNS PARALLEL TO 321
NORTH TRIGONIA ROAD	2.5	CO					411 S TO TRIGONIA
NORTHSHORE DRIVE	2.1	CO	3-21'	23'	50'		OFF TIMBERLAKE OFF PKWY
NORTHVIEW DRIVE	0.3	CO	26.5'	27'	50'	CURB/DE	OFF OLD 95 /NORTHVIEW ESTATES
N WILKERSON ROAD		CO	3-24'	24'	50'	CURBED	
NOTCH IN HILL ROAD	2.9	CO					OFF VONORE TO POPULAR SPRINGS
<b>O</b>							
OAK CHASE BLVD	0.6	CO					OFF 70 AVALON SUB
OAK GROVE ROAD	0.7	CO	3-21'	21'	50'		OFF HOTCHKISS VALLEY
OAKLY GLENN LANE	0.2	CO	3-24'	24'	50'	CURBED	SUB
OAKWOOD ESTATES DRIVE	0.8	CO	3-24'	24'	50'	CURBED DE	OFF MARTEL
OLD BAILY ROAD	0.2	CO	4-11'	11'	20'	DEADEND	OFF BEALS CHAPEL
OLD FARM ROAD	0.1	CO			30'		
OLD GREENBACK ROAD	0.7	CO			50'		OFF 321 S ACROSS FROM SCENIC DR
OLD HOLLOW ROAD	0.8	CO					FROM VONORE RD TO BRANCH RD
OLD HWY 95	2.4	SA					FROM 9TH AVE TO HWY 70
OLD KINGSTON ROAD	2.4	SA					FROM HOTCHKISS VALLEY W/ROANE
PAGE 12							

LOUDON COUNTY ROAD LIST	LENGTH	COUNTY OR	CLASS &	BED	RIGHT OF	CURBED SUBDIV	LOCATION OF ROAD
ROAD NAME	MILES	STATE AID	WIDTH	WIDTH	WAY	DEAD END	
O							
OLD LEE HWY	0.4	CO	3-18'	18'	50'		FROM W LEE TO MONORE CO
OLD MIDWAY ROAD	1.1	CO	3-17'	17'	50'		FROM 11 E TO MUDDY CREEK
OLD NILES FERRY PIKE	0.1	CO	3-20'	20'	50'		FROM THOMPSON BRIDGE TO BLOUN
OLD SINKING CREEK ROAD	0.6	CO					FROM MORGANTON TO BROOK
OLD SPEARS ROAD	0.3	CO	4-13'	14'	30'	DE	OFF BEALS CHAPEL TO DEADEND
OLD STAGE ROAD	0.9	CO	4-18'	20'	50'		OFF 11 NEAR DIXIE LEE JUNCTION'
OLD SUGAR LIMB ROAD	1.8	CO	3-19'	28'	50'		FROM SUGARLIMB LOOPS BACK
OODY ROAD	0.4	CO			50'		OFF VONORE RD
ORCHARD DRIVE	0.1	CO	3-24'	24'	50'	CURBED	SIL0 ESTATES SUBDIVISION
OREN WHITE ROAD	0.3	CO				DEADEND	FROM CARTERS CHAPEL TO DE
OSPREY COVE COURT	0.2	CO	3-24'	24'	50'	CURBED - DE	MILLERS LANDING
OTTER LANE	0.1	CO	3-24'	24'	50'	CURBED - DE	MILLERS LANDING
OUTER DRIVE	0.5	CO	3-20'	24'	50'		FROM 321 N NEAR SHAW FERRY/95
OVERLOOK DRIVE	0.1	CO				CURBED	OFF W LEE HWY/GREENACRES SUB
OVERLOOK ROAD	0.2	CO	3-14'	14'	30'		OO GRUB OFF OLD95
OWNBY ROAD	0.1	CO					FROM NILES FERRY TO BLOUNT
OXBOW ROAD	0.3	CO					OFF 411 NEAR MONORE CO LINE
OLD MCTEER RD	0.2	CO	3-10'	12'	20'		WADE RD E TO DEADEND
P							
PALMER DRIVE	0.6	CO	3-14'	15'	30'	DE	OFF LAKELAND BET/KEENER/WILKER
PAR DRIVE	0.1	CO				CURBED	RIVERVIEW GOLF SUBDIVISION
PARDUE LANE	0.4	CO	4-10'	12'	30'	DE	OFF 11 E ACROSS FROM NEELEY
PARKWAY DRIVE	0.3	CO					OFF 321N EATONWOOD SUBDIVISION
PARRIS DRIVE	1.7	CO	3-19'	20'	50'		OFF BEALS CHAPEL TO TWIN COVE
PATE ROAD	0.2	CO					OFF 321 S NEAR 95 INTERSECTION
PAW PAW PLAINS ROAD	0.8	CO					FROM HWY 70 NEAR ROANE CO
PAW PAW PLAINS ROAD W	0.9	CO					FROM HWY 70 W TO ROANE CO
PEACHTREE STREET	0.1	CO					FROM DAILEY AVE TO WEBB DR
PEMBROOK COURT	0.1	CO				CURB -DE	AVALON SUBDIVISION
PERKLE ROAD	0.6	CO					FROM FRIENDSVILLE TO MEADOW W
PETERSON ROAD	1.8	CO					FROM PKWY TO SINKING CREEK
PHELPS ROAD	0.9	CO					OFF BEALS CHAPLE TO LAKESIDE
PHILLIPS ROAD	0.5	CO					OFF HINES VALLEY
PAGE 13							

LOUDON COUNTY ROAD LIST	LENGTH	COUNTY OR	CLASS &	BED	RIGHT OF	CURBED SUBDIV	LOCATION OF ROAD
ROAD NAME	MILES	STATE AID	WIDTH	WIDTH	WAY	DEAD END	
P							
PICKLE ROAD	0.4	CO					OFF HALL RD
PINECREST CIRCLE	0.7	CO	3-19'	21'	50'		OFF CUSICK CIRCLE
PINEGROVE/PROVIDENCE RD	0.6	SA					FROM HOTCHKISS VALLEY TO HINES
PINE LANE	0.2	CO				DE	LEFT OFF LEEPER FERRY /BLOUNT
PINE STREET (LO)	0.1	CO	3-19'	19'	50'		FROM DAILEY AVE TO WEBB DR
PINE TOP STREET (G)	0.6	CO	3-18'	18'	50'		HIGHLAND PARK DR TO TWIN LAKES
POINT HARBOUR DRIVE	0.2	CO	3-23'	23'	50'	CURB - DE	OFF PHELPS NEAR BEALS CHAPEL
POND CREEK ROAD	3.9	SA					OFF W LEE HWY TO STOCKTON VAL
POND ROAD	3.8	CO					OFF E LEE NEAR SUGARLIMB
POPLAR RIDGE ROAD	0.9	CO					PWKY TO POPLAR SPRINGS
POPLAR SPRINGS ROAD	0.9	CO					POPLAR SPRINGS TO DEADEND
PORT MADISON DRIVE	0.4	CO					FROM E LEE TO RIVER
PRICE ROAD	0.7	CO				DE	OFF HICKORY CREEK
PROSPECT CHURCH ROAD	1.9	SA					72 N BACK TO 72N
PUMP STATION ROAD	0.2	CO					
Q							
QUEENER ROAD	0.2	SA					RIVER RD TO HWY 72 N
QUILLEN OVERLOOK DRIVE	0.1	CO					OFF SANDY SHORE DR NEAR 321 S
R							
RABY TOWN ROAD	0.4	CO					BETWEEN DAWSON & OAKLAND RD
RANCH ROAD	0.5	CO					
RANCHERO DRIVE	0.2	CO	3-21'	21'	50'	CURB-DE	OFF CRESS LN
RAUSIN ROAD	3.4	CO					FROM W LEE AAT PHILADELPHIA
RAWHIDE TRAIL	0.3	CO	3-26'	26'	50'	CURB-DE	FROM FOSTER TO MUDDY CREEK RD
RED GROUSE DRIVE	0.4	CO	3-24'	24'	50'	CURB-DE	
REED SPRINGS CHURCH RD	0.7	CO					FROM SUNNYSIDE TO MONORE
REED SPRINGS ROAD	0.6	CO					FROM SUNNYSIDE TO MONORE
REST CAMP ROAD	1.5	CO					FROM ANTIOCH CH E TO UNITIA
REX LANE	0.1	CO					OFF UNITIA NEAR GILBERT LN
RIDEN ROAD	0.1	CO				DE	OFF PKWY S OF MORGANTON
RIDGEBARK LANE	0.2	CO	3-24'	24'	50'		OFF OAKWOOD ESTATE DR
RIDGEVIEW DRIVE	0.1	CO					
RILEY DRIVE	0.7	CO					OFF EDITH LN OFF HINES VALLEY
PAGE 14							

LOUDON COUNTY ROAD LIST	LENGTH	COUNTY OR	CLASS &	BED	RIGHT OF	CURBED SUBDIV	LOCATION OF ROAD
ROAD NAME	MILES	STATE AID	WIDTH	WIDTH	WAY	DEAD END	
<b>R</b>							
RICHEY ROAD	1.1	CO					OFF VONORE NEAR WATKIN/BRANCH
RIVER CHASE ROAD	0.3	CO	3-26'	26'	50'	CURBED - DE	OFF THURMER CR NEAR BEALS CH
RIVER POINT DRIVE	0.2	CO	3-24'	24'	50'	CURBED - DE	OFF LAKE COVE
RIVERS EDGE DRIVE	0.3	CO				CURBED	OFF RIVERVIEW GOLF DR
RIVER VIEW DRIVE	1	CO	3-18'	18.5'	50'	CURBED	FROM MAIN ST TO DEAD END
RIVERVIEW GOLF DRIVE	0.4	CO				CURBED	OFF HUFFS FERRY PAST GOLF COR.
RIVERVIEW ROAD	1	CO				DE	OFF INDUSTRIAL PK DR TO DE
ROAX ROAD	0.3	CO					FROM UNITIA RD TO BLOUNT CO
ROBERSON SPRINGS ROAD	2.7	SA					FROM MULBERRY ST TO DRY VALLEY
ROBERTS CIRCLE	0.4	CO	3-18'	18'	50'		OFF FORD RD
ROBERTS ROAD	0.4	CO	3-24'	24'	50'		OFF STEEKEE NEAR 72
ROBINSON CIRCLE (LC)	0.7	CO					OFF 11 E
ROBINSON DRIVE (LC)	0.1	CO					
ROBINSON ROAD (LO)	0.4	CO					OFF PROSPECT CHURCH NEAR 76
ROCK QUARRY ROAD	0.7	CO					OFF E LEE BACK TO E LEE
ROCKY TOP ROAD	0.6	CO				DE	OFF DAVIS LN OFF BUTTERMILD
RODNEY ROAD	0.1	CO					OFF SCENIC DR NEAR 321S
ROLLING ACRES DRIVE	0.1	CO					OFF OLD 96 NEAR BENJAMIN DR
ROSS ROAD	1.9	CO					OFF STOCKTON VALLEY
ROUNDUP LANE	0.1	CO	3-25'	25'	50'	CURB-DE	FROM RAWHIDE TRAIL TO DE
ROY LONAS ROAD	0.4	CO					
RURITAN ROAD	0.2	CO				DE	FROM HICKORY CREEK TO DE
RUSSELL LANE	0.3	CO	4-19'	20'	50'		OFF HARDIN DR HARDIN ESTATES
RUSSELL ROAD	0.1	CO					EASTER DR TO DEAD END
RYAN ROAD	0.7	CO					
<b>S</b>			3-30'			CURBED	
SAMPSON BLVD	0.1	CO					MAHLON PLACE SUBDIVISION
SANDY SHORE DRIVE	0.6	CO					OFF 321 NEAR DAM
SCENIC DRIVE	0.3	CO					OFF ALLEN SHORES NEAR DAM
SCENIC VIEW DRIVE	0.3	CO	3-25'	27'	50'	DE	OFF RIVERVIEW DR PAST GOLF
SHAW FERRY LANE	0.6	CO	3-18'	18'	50'		OFF SHAWFERRY RD
SHAW FERRY ROAD	2.5	SA					N OF TOWN CREEK TO MARTEL
SHAW FERRY ROAD N	1.1	CO	3-18'	18'	50'		FROM 321 FROM BILL SMITH
PAGE 15							

LOUDON COUNTY ROAD LIST	LENGTH	COUNTY OR	CLASS &	BED	RIGHT OF	CURBED SUBDIV	LOCATION OF ROAD
ROAD NAME	MILES	STATE AID	WIDTH	WIDTH	WAY	DEAD END	
S							
SHEETS HOLLOW ROAD		CO	3-19'	19'	50'		OFF MEADOW W AC/ BROOK
SHELL ROAD	0.2	CO					OFF WASHINGTON PIKE
SHELTON GROVE ROAD	0.7	CO					FROM BLUE SPRINGS TO ERIE
SHIPLEY LANE	0.3	CO	4-13'	13'	30'		FROM 70 E TO OLD STAGE
SHULTZ LANE	0.4	CO					OFF 411 AC FROM NILES FERRY
SILO DRIVE	0.5	CO	3-24'	24'	50'	CURBED - DE	OFF MUDDY CREEK NEAR MARTEL
SIMMONS ROAD (LO)	0.3	CO					E LEE TO WEBB DR
SIMPSON ROAD (LC)	0.5	CO					FROM OLD 95 TO NORTHSIDE DR
SIMPSON ROAD EAST	0.4	CO	4-19'	20'	50'		321 TO SHAW FERRY
SINKING CREEK ROAD	2.4	CO					FROM MORGANTON TO 95
SKYVIEW DRIVE	0.3	CO				CURBED -DE	AVALON SUBD
SLAB TOWN ROAD	0.3	SA					FROM BLUE SPRINGS TO MCINN
SMALLEN ROAD	1.1	CO					OFF POPLAR SPRINGS RD
SMITH VALLEY ROAD	0.1	CO	4-13'	15'	30'	DE	OFF 70 BET/FORD & THORTON RDS
SNOODDERLY ROAD	0.5	CO					OFF LOUDON RIDGE TO SUGARLIMB
SNOW ROAD	0.3	CO	3-16'	18'	50'		FROM FOREST HEIGHTS TO VIRTUE
SPRING ROAD	0.5	CO					OFF HARRISON OFF OLD 95
SPRING VIEW ROAD	0.3	CO	3-26'	26'	50'	CURB - DE	OFF BLACKBERRY RIDGE DR
STAFFORD ROAD	0.7	CO					FROM 72N INTO ROANE
STALLCUP ROAD	0.3	CO					OFF FORK CREEK INTO MONORE
STEEKEE CREEK ROAD	3.4	SA					FROM STEEKEE INTO MONORE
STEEKEE ROAD	4.3	SA					FROM GROVE ST TO MONORE
STEEKEE SCHOOL ROAD	2.2	SA					STEEKEE TO VONORE
STEVENS LANE	0.4	CO					OFF BROWDER HOLLOW
STEVENS ROAD	0.2	CO					FROM NILES FERRY TO TRIGONIA
STINNETT ROAD	0.3	CO					NEAR HIGHLAND PARK SCHOOL
STOCKTON VALLEY	6.2	SA					FROM 72 N TO OAKLAND R
STRANGE ROAD	0.5	CO	3-16'	18'	50'		OFF 11 E NEAR OLD STAGE
ST THOMAS WAY	0.1	CO	3-22'	22'	50'		PRIVATE ON 321
SUGARWOOD ROAD	0.3	CO					OFF SUGARLIMB S OF 75
SUNNYSIDE ROAD	2.6	CO					W LEE HWY TO RAUSIN RD
SUNSET DRIVE	0.1	CO					OFF CRESCENT DDR E LEE HWY
PAGE 16							

LOUDON COUNTY ROAD LIST	LENGTH	COUNTY OR	CLASS &	BED	RIGHT OF	CURBED SUBDIV	LOCATION OF ROAD
ROAD NAME	MILES	STATE AID	WIDTH	WIDTH	WAY	DEAD END	
T							
TANGLEWOOD DRIVE	0.9	CO	3-23'	23'	50'	CURB - DE	FROM KNOX LN S OF MARTEL
TARWATER ROAD	1.3	O					OFF 95 S ACROSS FROM PINE GRO
TAYLOR DRIVE	0.1	CO	4-16'	18'	50'	DE	OFF 11 E NEAR SHAW FERRY
TEETERS ROAD	0.3	CO					GREENBACK
TEN MILE ROAD	0.2	CO					OFF MURRAYS CHAPEL IN ERIE
THOMPSON BRIDGE ROAD	0.1	CO					FROM 411 INTO BLOUNT CO
THOMPSON ROAD	0.2	CO					OFF JACKSON BEND
THORNTON DRIVE	0.5	CO				DE	OFF 70 NEAR DIXIE LEE JUNCTION
THURMAN DRIVE	0.5	CO	4-25'	27'	50'	DE	
THURMER CIRCLE	0.2	CO	3-26'	26'	50'	CURB-DE	OFF LAKEVIEW NEAR BEALS CHAPEL
TILLEY ROAD	0.6	CO					POND CREEK TO DEAD END
TIMBERLINE DRIVE	0.3	CO			50'	CURBED	AVALON SUBD
TIMBER RIDGE DRIVE	0.3	CO					OFF HINES VALLEY (SUBDIVISION)
TINNEL LANE	0.2	CO					OFF TINNEL RD TO DEAD END
TINNEL ROAD	0.4	CO	3-18'	18'	50'		NEAR HIGHLAND PARK SCHOOL
TIVOLE DRIVE	0.2	CO					OFF WALLERS FERRY BET 140 & 175
TOWN CREEK CIRCLE	0.2	CO					OFF MYRES RD NEAR TOWN CREEK
TOWN CREEK ROAD E	1.4	SA					FROM 321 TO FORD RD
TOWN CREEK ROAD W	1.4	SA					FROM 321 TO OLD 95
TRADES DRIVE	0.1	CO					HARRISON HILLS SUBDIVISION
TRAIL VIEW DRIVE	0.3	CO					FROM CECIL WEBB TO DEAD END
TRIGONIA ROAD	0.8	CO					OFF TRIGONIA TO MONORE
TURNER LANE	0.2	CO			50'	CURBED -DE	
TURN LANE ROAD	0.3	CO					OFF SIMPSON RD
TURTLE COVE COURT	0.2	CO	3-24'	24'	50'	CURBED-DE	LAKECREST DR TO DE MILLERS LAN
TWIN COVE CIRCLE	0.5	CO	3-26'	26'	50'	CURBED-DE	OFF PARRIS DR IN TCOVE SUBDIVIS
TWIN COVE DRIVE	0.4	CO	3-26'	26'	50'	CURBED-DE	TWIN COVES SUBDIVISION
U							
UNION FORK CREEK CHURCH	1.3	CO					HWY 72S TO WADE RD W
UNITIA ROAD	2.9	SA					FROM HWY 321 S TO BLOUNT CO
V							
VALLEY DALE DRIVE	0.2	CO					LITTLE MNT ESTATES
VALLEY VIEW DRIVE	0.1	CO					LITTLE MNT ESTATES
PAGE 17							

LOUDON COUNTY ROAD LIST	LENGTH	COUNTY OR	CLASS &	BED	RIGHT OF	CURBED SUBDIV	LOCATION OF ROAD
ROAD NAME	MILES	STATE AID	WIDTH	WIDTH	WAY	DEAD END	
<b>V</b>							
VARNER HOLLOW ROAD	0.4	CO					OFF STEEKEE RD NEAR CIRCLE DR
VAUGHN ROAD	0.4	CO					OFF UNITIA
VAUGHNS CHAPEL ROAD	0.3	CO					FROM BROWDER SCHOOL
VINEYARD ROAD	0.6	CO					321S ACROSS FROM 85 N
VIRTUE ROAD	0.5	SA	3-18'	20'	50'		OFF MUDDY CREEK TO OLD MIDWAY
VONORE ROAD	4.3	SA					FROM 72 S TO WATKINS RD
<b>W</b>							
WADE LANE	0.3	CO					WADE RD TO DEAD END
WADE ROAD EAST	0.5	CO				DE	OFF 72 S NEAR PKWY
WADE ROAD WEST	1.3	CO					FROM 72S TO MARKWOOD
WALLER FERRY ROAD	1.2	CO					FROM WHITE WING TO 321
WARD ROAD (LC)	0.7	CO					OFF HICKORY CREEK
WARD ROAD (LO)	0.6	CO				DE	OFF WADE TO MONROE
WASHINGTON PIKE	4.3	CO					FROM PHILADELPHIA TO MONORE
WATKINS ROAD	2.2	SA					FROM STEEKEE TO VONORE
WATSON ROAD	1.4	CO					FROM CORINTH TO WATKINS
WATT CEMETERY ROAD	2.7	CO					FROM DAVIS FERRY TO RITCHEY
WEBB CIRCLE	0.1	CO	3-17'	17'	50'		OFF 11 W NEAR SUGARLIMB
WEBB DRIVE	0.5	CO					FROM COX TO PORT MADISON
WEDGEWOOD DRIVE	0.4	CO					AVALON SUBD
WESCHESTER ROAD	0.2	CO			50'	CURBED	AVALON SUBD
WESLEY ROAD	0.3	CO	4-19'	23'	50'		OFF HARDIN DR HARDIN ESTATES
WEST FORK ROAD	0.4	CO	3-19'	19'	50'		OFF 72 S ACROSS BRIDGE S OF PKY
WEST LANE	0.2	CO					OFF FOSTER RD
WESTSHORE DRIVE	0.2	CO					OFF MISTY VIEW DR/RIVERVIEW DR
WHEAT ROAD	1.4	SA					FROM HINES VALLEY TO ROANE
WHEELER DRIVE	0.1	CO					OFF 70 NEAR DIXIE LEE JUNCTION
WHITE OAK ROAD	0.3	CO					OFF OVERLOOK RD TO SHAW FERRY
WHITE ROAD	0.8	CO					OFF PINE GROVE / PROV
WHITE WING ROAD	0.2	SA					FROM 321N N NEAR WALLER FERRY
WHITE WING ROAD N	2.4	SA					FROM 321N OF I40 TO 321
WHITE WING ROAD W	0.2	SA					FROM 321 OFF I40 TO
WHITNEY DRIVE	0.4	CO				CURBED	OAKWOOD ESTATES SUBDIVISION
PAGE 18							

[illegible]

**RESOLUTION 030507-C**

**A RESOLUTION AMENDING THE ZONING MAP OF LOUDON COUNTY, TENNESSEE, PURSUANT TO CHAPTER SEVEN, §13-7-105 OF THE TENNESSEE CODE ANNOTATED, TO REZONE PROPERTY LOCATED AT 21444 HWY 321 S, CONTAINING APPROX 1/2 (.50) ACRES, SITUATED IN THE 3rd LEGISLATIVE DISTRICT, REFERENCED BY TAX MAP 35, PART OF PARCEL 79.00, FROM C-1 RURAL CENTER DISTRICT TO C-2 GENERAL COMMERCIAL DISTRICT**

**WHEREAS**, the Loudon County Commission, in accordance with Chapter Seven, §13-7-105 of the Tennessee Code Annotated, may from time to time, amend the number, shape, boundary, area or any regulation of or within any district or districts, or any other provision of any zoning resolution, and

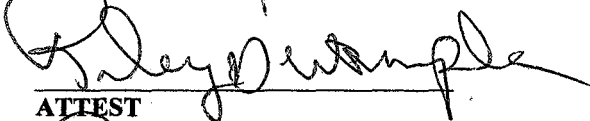
**WHEREAS**, the Regional Planning Commission has forwarded a recommendation regarding the amendment to the Zoning Map of Loudon County, Tennessee,


**WHEREAS**, a notice of public hearing and a description of the resolution appeared in the Loudon County News Herald on February 14/15, 2007, consistent with the provisions of Tennessee Code Annotated, §13-7-105,


**NOW, THEREFORE, BE IT RESOLVED** by the Loudon County Commission that the Zoning Map of Loudon County, Tennessee be amended as follows:

That property located at 21444 Hwy 321 S, containing approximately 1/2 (.50) acres, situated in the 3rd Legislative District, referenced by Tax Map 35, part of Parcel 79.00, be rezoned from C-1, Rural Center District to C-2, General Commercial District, as shown on the attached map; said map being part of this Resolution.

**BE IT FINALLY RESOLVED**, that this Resolution shall take effect immediately, the public welfare requiring it.

  
ATTEST

  
LOUDON COUNTY CHAIRMAN  
DATE: \_\_\_\_\_

  
APPROVED: LOUDON COUNTY MAYOR

The votes on the question of approval of this Resolution by the Planning Commission is as follows:

APPROVED: \_\_\_\_ 11 \_\_\_\_

DISAPPROVED: \_\_\_\_ 0 \_\_\_\_

ATTEST: SECRETARY LOUDON COUNTY  
REGIONAL PLANNING COMMISSION  
Dated: February 20, 2007

FILE #07-01-14-RZ-CO

**LOUDON COUNTY PLANNING OFFICE**  
**FACSIMILE MEMORANDUM**  
**1 PAGE**

**TO:** Kevin Kyle, News Herald  
Fax Number: 988-3261

**FROM:** Debbie Hines

**DATE:** January 30, 2006

**RE:** NOTICE OF PUBLIC HEARING (#07-01-14-RZ-CO)

Please place the following notice of Public Hearing in the Wednesday/Thursday, February 14-15, 2007, edition of the News-Herald. The ad should be no larger than 2 columns by 3 inches.

**PUBLIC HEARING**

The Loudon County Commission will hold a public hearing on Monday, February 5, 2007 at 6:00 P.M. at the Courthouse Annex to consider an amendment to the Zoning Resolution of Loudon County, Tennessee, to rezone the following:

**THAT PROPERTY LOCATED AT 21444 HWY 321 S, CONTAINING APPROX .505 ACRES, SITUATED IN THE 3rd LEGISLATIVE DISTRICT, REFERENCED BY TAX MAP 35, PART OF PARCEL 79.00, FROM C-1 RURAL CENTER DISTRICT TO C-2 GENERAL COMMERCIAL DISTRICT**

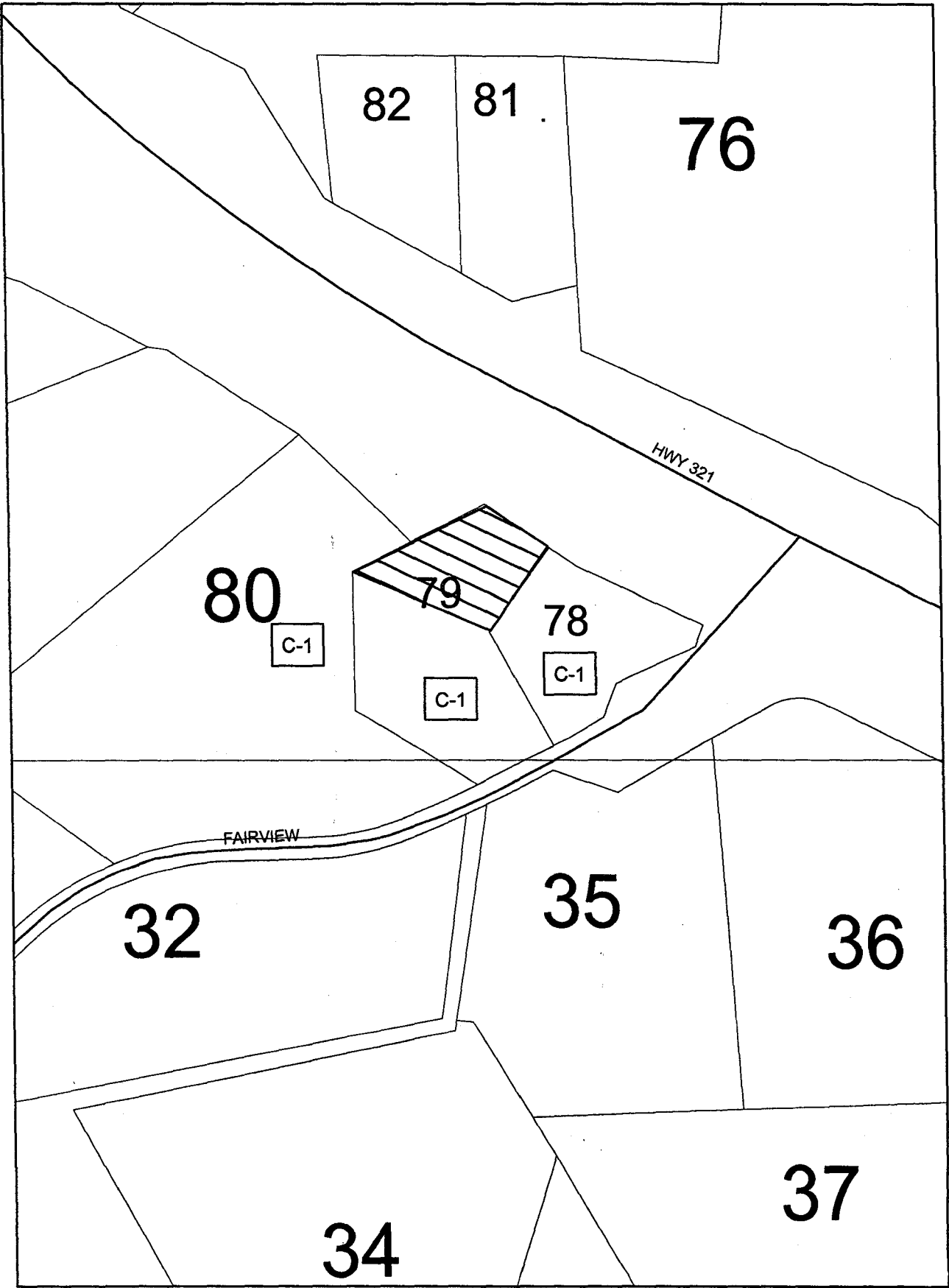
Copies of this Resolution are available for review at the Office of Planning & Community Development, 274 Blair Bend Drive, Loudon, TN, or you may phone 458-3880 during business hours for assistance.

**INVOICE: LOUDON COUNTY**

FILE #07-01-14-RZ-CO

Loudon County Commission  
Item B

Request consideration of approval of rezoning approximately 1/2 (.50) acres of property located at 21444 Hwy 321 S, from C-1, Rural Center District, to C-2, General Commercial District, referenced by Tax Map 35, part of 79.00, 3rd Legislative District. Owner: Darwin & Gina Spires [07-01-14-RZ-CO]



**Loudon County Commission**

**Item B**

**Request consideration of approval of rezoning approximately 1/2 (.50) acres of property located at  
21444 Hwy 321 S from C-1, Rural Center District to C-2, General Commercial District**



**RESOLUTION 030507-D**

**A RESOLUTION AMENDING THE ZONING MAP OF LOUDON COUNTY, TENNESSEE, PURSUANT TO CHAPTER SEVEN, §13-7-105 OF THE TENNESSEE CODE ANNOTATED, TO REZONE PROPERTY LOCATED AT 19202 BEALS CHAPEL ROAD, CONTAINING APPROX 1.37 ACRES, SITUATED IN THE 6TH LEGISLATIVE DISTRICT, REFERENCED BY TAX MAP 28, PARCEL 55.00, FROM A-1/F-1 AGRICULTURE-FORESTRY DISTRICT AND FLOODPLAIN DISTRICT TO R-1/F-1 SUBURBAN RESIDENTIAL DISTRICT AND FLOODPLAIN DISTRICT**

**WHEREAS**, the Loudon County Commission, in accordance with Chapter Seven, §13-7-105 of the Tennessee Code Annotated, may from time to time, amend the number, shape, boundary, area or any regulation of or within any district or districts, or any other provision of any zoning resolution, and

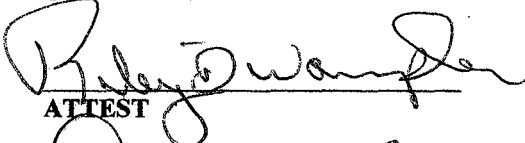
**WHEREAS**, the Regional Planning Commission has forwarded a recommendation regarding the amendment to the Zoning Map of Loudon County, Tennessee,

**WHEREAS**, a notice of public hearing and a description of the resolution appeared in the Loudon County News Herald on February 14/15, 2007, consistent with the provisions of Tennessee Code Annotated, §13-7-105,

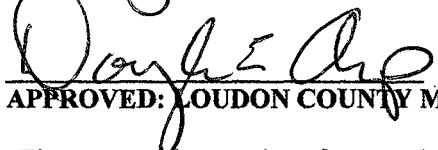
**NOW, THEREFORE, BE IT RESOLVED** by the Loudon County Commission that the Zoning Map of Loudon County, Tennessee be amended as follows:

That property located at 19202 Beals Chapel Road, containing approximately 1.37 acres, situated in the 6th Legislative District, referenced by Tax Map 28, Parcel 55.00, be rezoned from A-1/F-1, Agriculture-Forestry District and Floodplain District to R-1/F-1, Suburban Residential District and Floodplain District, as shown on the attached map; said map being part of this Resolution.

**BE IT FINALLY RESOLVED**, that this Resolution shall take effect immediately, the public welfare requiring it.

  
ATTEST

  
LOUDON COUNTY CHAIRMAN  
DATE: \_\_\_\_\_

  
APPROVED: LOUDON COUNTY MAYOR

The votes on the question of approval of this Resolution by the Planning Commission is as follows:

APPROVED: \_\_\_\_10\_\_\_\_

DISAPPROVED: \_\_\_\_1\_\_\_\_

ATTEST: SECRETARY LOUDON COUNTY  
REGIONAL PLANNING COMMISSION  
Dated: February 20, 2007

FILE #07-01-23-RZ-CO

**LOUDON COUNTY PLANNING OFFICE**  
**FACSIMILE MEMORANDUM**  
**1 PAGE**

**TO:** Kevin Kyle, News Herald  
Fax Number: 988-3261

**FROM:** Debbie Hines

**DATE:** January 30, 2006

**RE:** NOTICE OF PUBLIC HEARING (#07-01-23-RZ-CO)

Please place the following notice of Public Hearing in the Wednesday/Thursday, February 14-15, 2007, edition of the News-Herald. The ad should be no larger than 2 columns by 3 inches.

**PUBLIC HEARING**

The Loudon County Commission will hold a public hearing on Monday, March 5, 2007 at 6:00 P.M. at the Courthouse Annex to consider an amendment to the Zoning Resolution of Loudon County, Tennessee, to rezone the following:

**THAT PROPERTY LOCATED AT 19202 BEALS CHAPEL ROAD, CONTAINING  
APPROX 1.37 ACRES, SITUATED IN THE 6TH LEGISLATIVE DISTRICT,  
REFERENCED BY TAX MAP 28, PARCEL 55.00, FROM A-1/F-1 AGRICULTURE-  
FORESTRY DISTRICT AND FLOODPLAIN DISTRICT TO  
R-1/F-1 SUBURBAN RESIDENTIAL DISTRICT AND FLOODPLAIN DISTRICT**

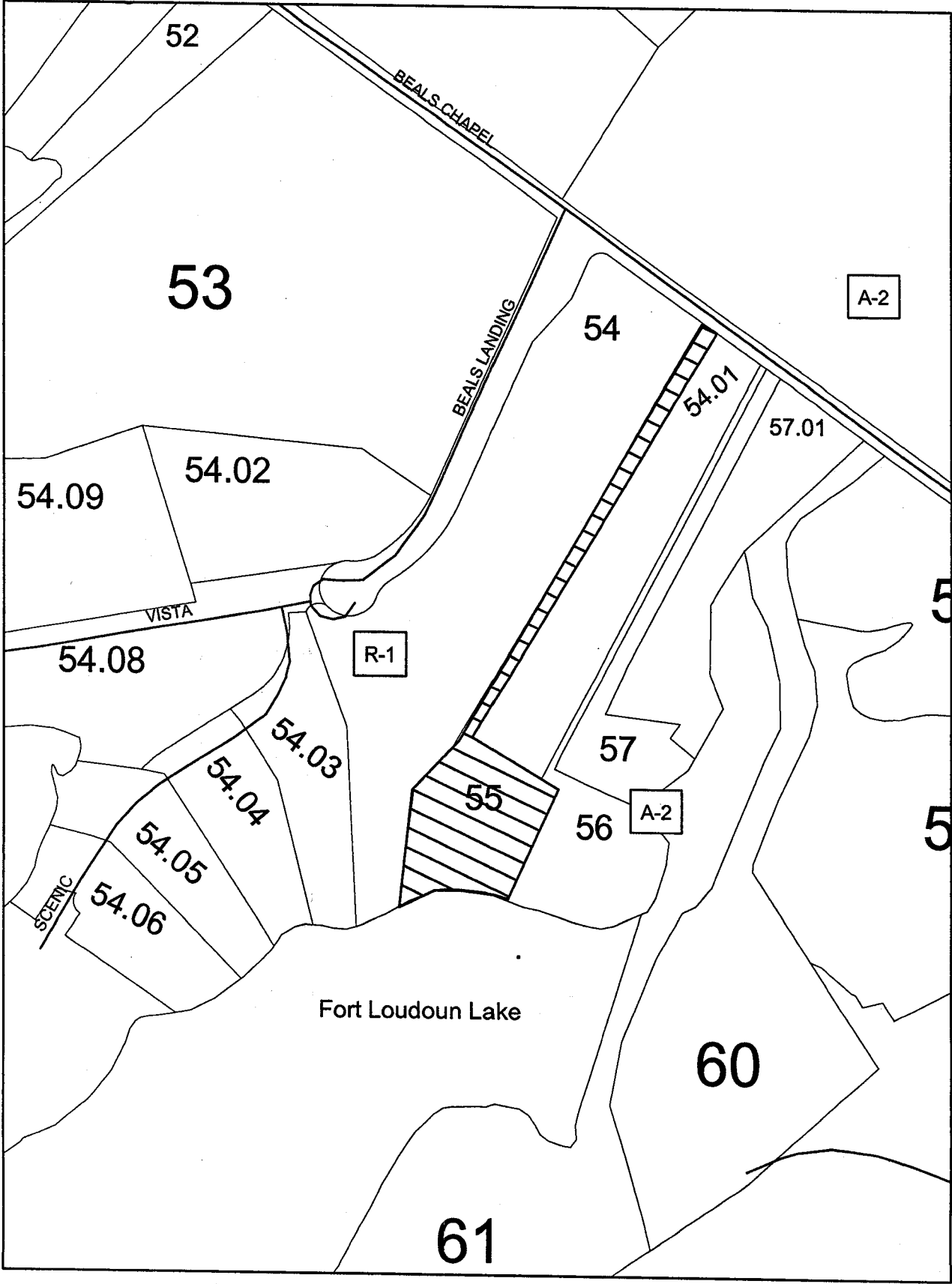
Copies of this Resolution are available for review at the Office of Planning & Community Development, 274 Blair Bend Drive, Loudon, TN, or you may phone 458-3880 during business hours for assistance.

**INVOICE: LOUDON COUNTY**

FILE #07-01-23-RZ-CO

Loudon County Commission  
Item C

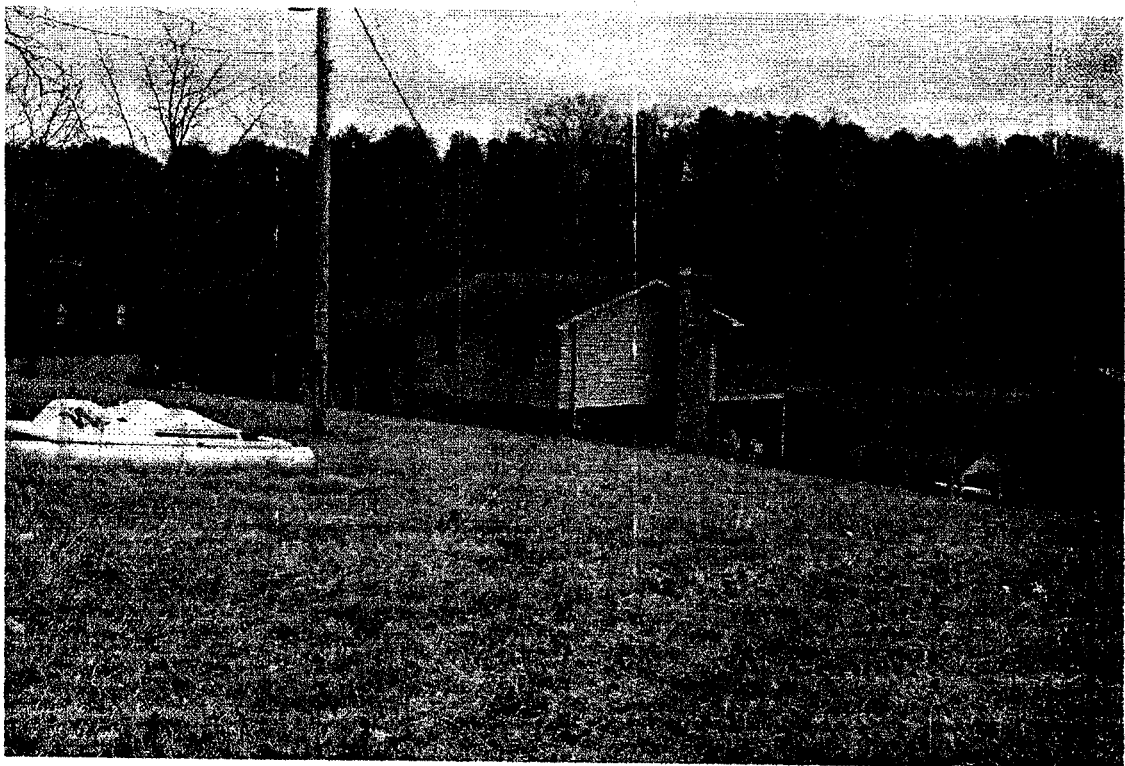
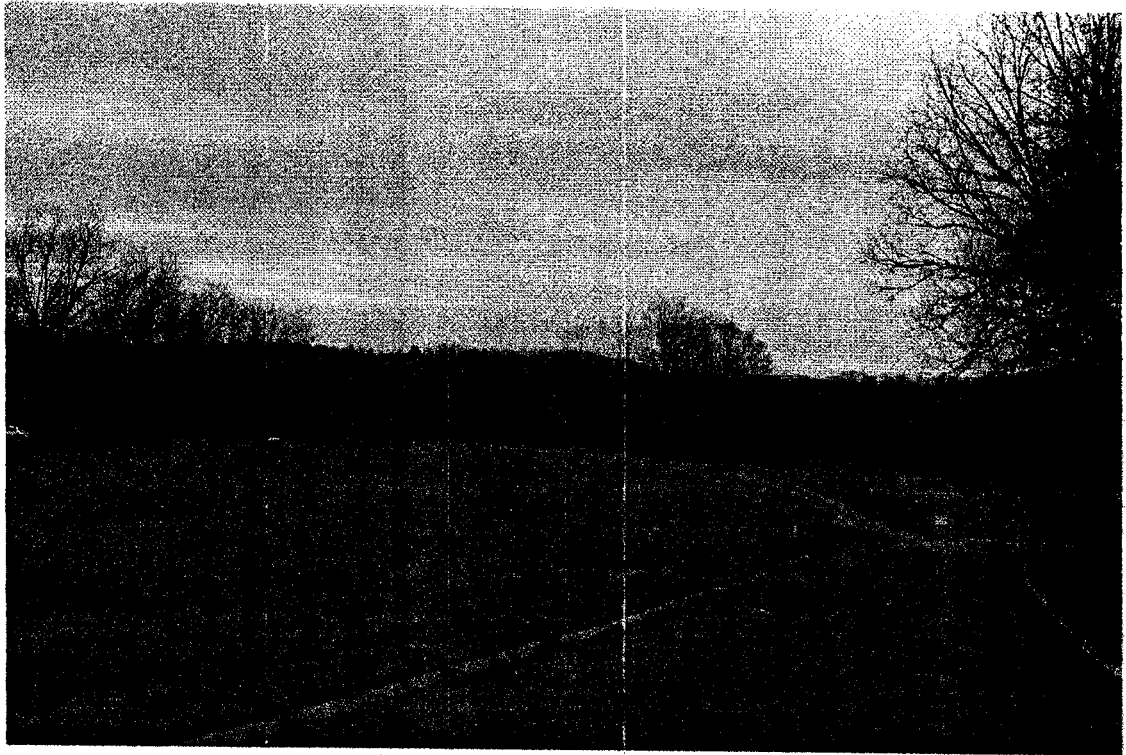
Request consideration of approval of rezoning approximately 1.37 acres of property located at 19202 Beals Chapel Road from A-2/F-1, Agricultural-Forestry District and Floodplain District to R-1/F-1, Rural Residential District and Floodplain District, referenced by Tax Map 28, Parcel 55.00, 6th Legislative District.  
Owner: Don Fowler [07-01-23-RZ-CO]



Loudon County Commission

Item C

Request consideration of approval of rezoning approximately 1.37 acres of property located at 19202 Beals Chapel Road from A-1/F-1, Agriculture-Forestry District and Floodplain District to R-1/F-1, Suburban Residential District and Floodplain District



**RESOLUTION 030507-E**

**A RESOLUTION OF THE LOUDON COUNTY COMMISSION ACCEPTING  
CHRISTENSEN BOULEVARD WITHIN TELlico REGIONAL INDUSTRIAL PARK  
LOCATED OFF EAST COAST TELlico PARKWAY INTO THE PUBLIC ROADWAY  
SYSTEM, SAID ROAD LOCATED IN THE 3<sup>RD</sup> LEGISLATIVE DISTRICT OF  
LOUDON COUNTY, TENNESSEE**

**WHEREAS**, the chief legislative body of the county has the authority under Tennessee Code Annotated to accept the dedication of roads, to adopt policies and standards for the acceptance of new roads and to reopen previously closed county roads; and

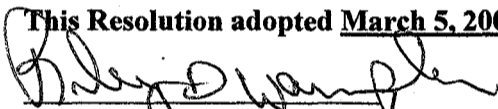
**WHEREAS**, the Loudon County Regional Planning Commission has received a request from Tellico Reservoir Development Agency, owner of said property, that approximately 2,800' of industrial roadway with an 80' right of way beginning at the intersection of East Coast Tellico Parkway extending west and terminating at a cul de sac, be accepted into the county public road system; and

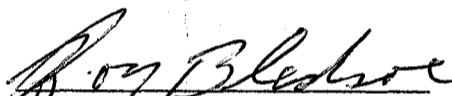
**WHEREAS**, the Loudon County Regional Planning Commission has reviewed construction and right of way plans and recommends that the road be accepted into the County's Roadway System based on the design, that is consistent with acceptance of roads to County public road standards.

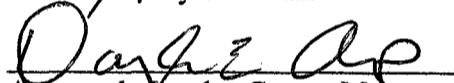
**NOW, THEREFORE, BE IT RESOLVED**, that the Loudon County Commission considers the acceptance of Christensen Way, located in plat cabinet G, Slides 286 & 287 of the Loudon County Register of Deeds Office, as a public benefit and be accepted into the County's roadway system as indicated on the attached map, said map being a part of this Resolution.

**NOW, THEREFORE, BE IT FINALLY RESOLVED**, that this Resolution shall take effect immediately the public welfare requiring it.

**This Resolution adopted March 5, 2007**

  
Attest, County Court Clerk

  
Loudon County Chairman

  
Approved: Loudon County Mayor

The vote on the question of approval of this Resolution by the Planning Commission is as follows:

APPROVED: 11

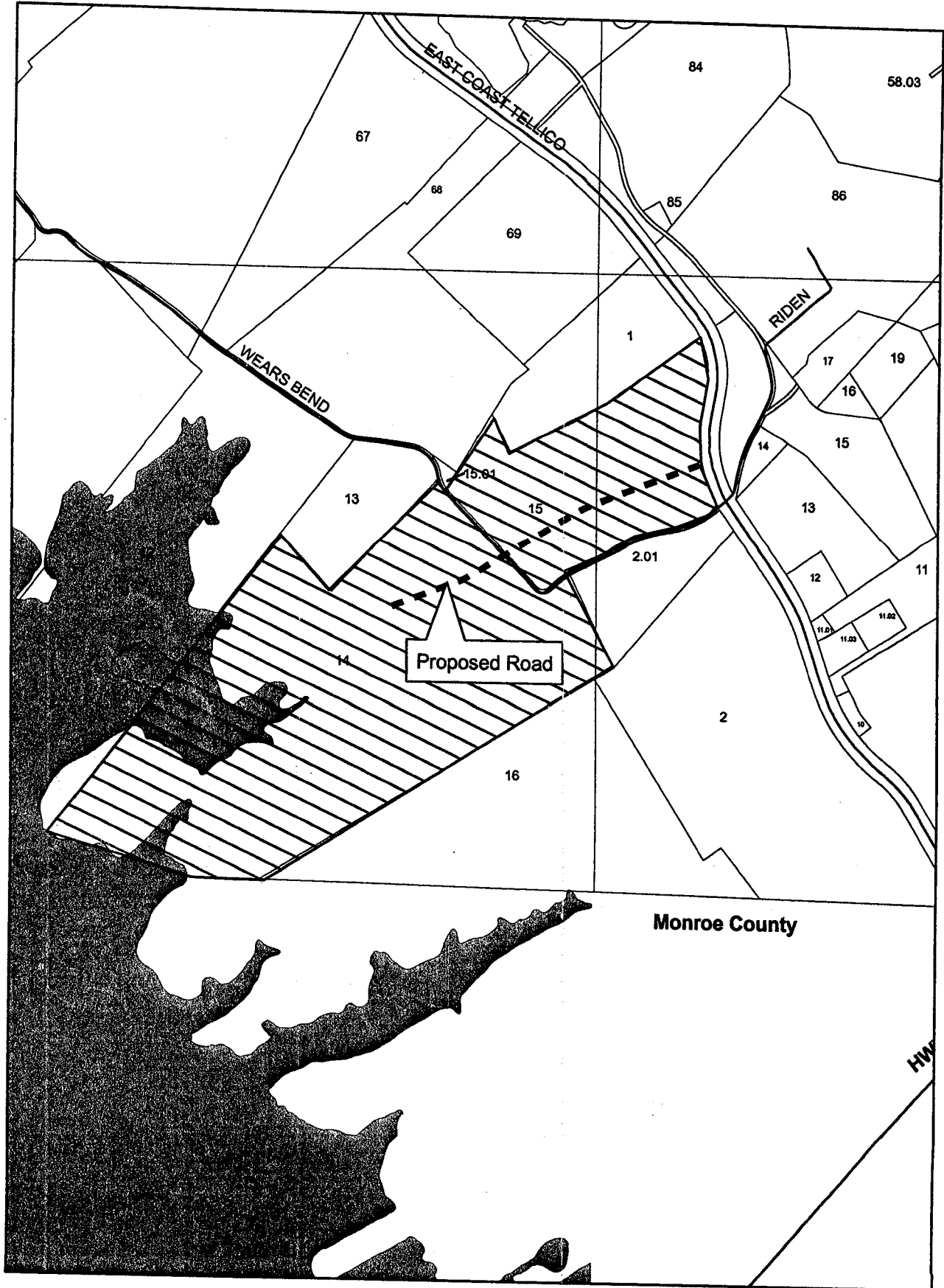
DISAPPROVED: 0

ATTEST: SECRETARY, LOUDON COUNTY  
REGIONAL PLANNING COMMISSION  
DATE: February 20, 2007

FILE # 06-04-88-TR-CO

**Loudon County Commission  
Item D**

Request to accept dedication of right of way to Tellico Regional Business Campus, consisting of 5.35 acres of property, located off East Coast Tellico Parkway, referenced by Tax Map 83, Parcel 14.00. 3rd Legislative District. Owner: Tellico Reservoir Development Agency, Applicant: Loudon County Government



Loudon County Commission  
Item D

Request to accept dedication of right of way to Tellico Regional Business Campus, consisting of 5.35  
acres of property located off East Coast Tellico Parkway



## **RESOLUTION 030507-F**

### **A RESOLUTION REQUESTING ASSISTANCE FROM THE TENNESSEE DEPARTMENT OF TRANSPORTATION UNDER THE STATE INDUSTRIAL ACCESS ROAD PROGRAM FOR IMPROVEMENTS TO EAST COAST TELLICO PARKWAY AT HIGHWAY 411**

**WHEREAS**, The Loudon County Commission and Monroe County Commission are public bodies corporate and politic, established under Tennessee Code Annotated; and

**WHEREAS**, The Tennessee Department of Transportation and Loudon County have entered into a contract to manage the construction of a new industrial access road serving Tellico East Regional Campus and Christensen Shipbuilders within Loudon County, and

**WHEREAS**, during the public comment process on the proposed construction of the industrial access road local residents expressed concerns regarding necessary improvements to East Coast Tellico Parkway at Hwy. 411, notably the elevated railroad crossing over the CSX rail line, lack of signalization at Hwy. 411, and left turn lanes from East Coast Tellico Parkway, said improvements located within Monroe County, and

**WHEREAS**, Loudon and Monroe Counties recognize the importance of promoting the economic welfare of the properties and lands served by the Tellico Reservoir Development Agency and responsibility to provide an adequate and safe transportation system for area residents and employees of Tellico East Regional Campus and wish to provide the necessary leadership to enhance the area's capabilities for growth and development, and

**WHEREAS**, the provision of jobs to area citizens by local industry is both necessary and vital to the economic well-being of the East Tennessee Region, and

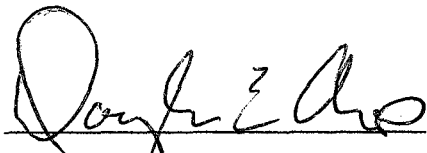
**WHEREAS**, the Industrial Highway Act of 1959 authorized the Tennessee Department of Transportation to contract with cities and counties for the construction and maintenance of "Industrial Highways" to provide access to industrial areas and to facilitate the development and expansion of industry within the State of Tennessee, and

**WHEREAS**, Christensen Shipbuilders is currently in construction of a 400,000 sq. ft. manufacturing facility within the boundaries of the Little Tennessee River Watershed located within Loudon County, TN, near the Monroe County line, and

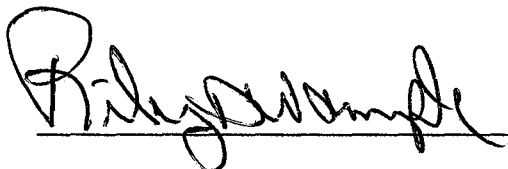
**WHEREAS**, local officials were initially informed that employment was projected at 500; however company officials have since indicated that the number potentially will increase to 1,200 within the next year and 2,000 within the next 3 years creating additional impacts on the local transportation system.

**NOW, THEREFORE BE IT RESOLVED** by the Loudon County Commission and Monroe County Commission, that an application be made to the Tennessee Department of Transportation for assistance in providing the necessary funds towards improvements to East Coast Tellico Parkway at Hwy. 411, being the primary access to the industrial properties in the Wears Bend area of Loudon County under the provisions of the Industrial Highway Act of 1959, and pursuant to the "Rules and Regulations for the Construction of Industrial Highways" promulgated by the Commissioner of Transportation.

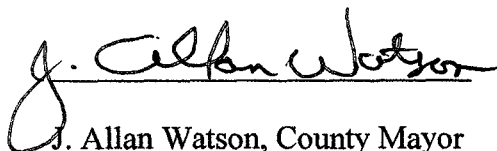
Adopted this the 5<sup>TH</sup> day of March, 2007



Doyle E. Arp, County Mayor



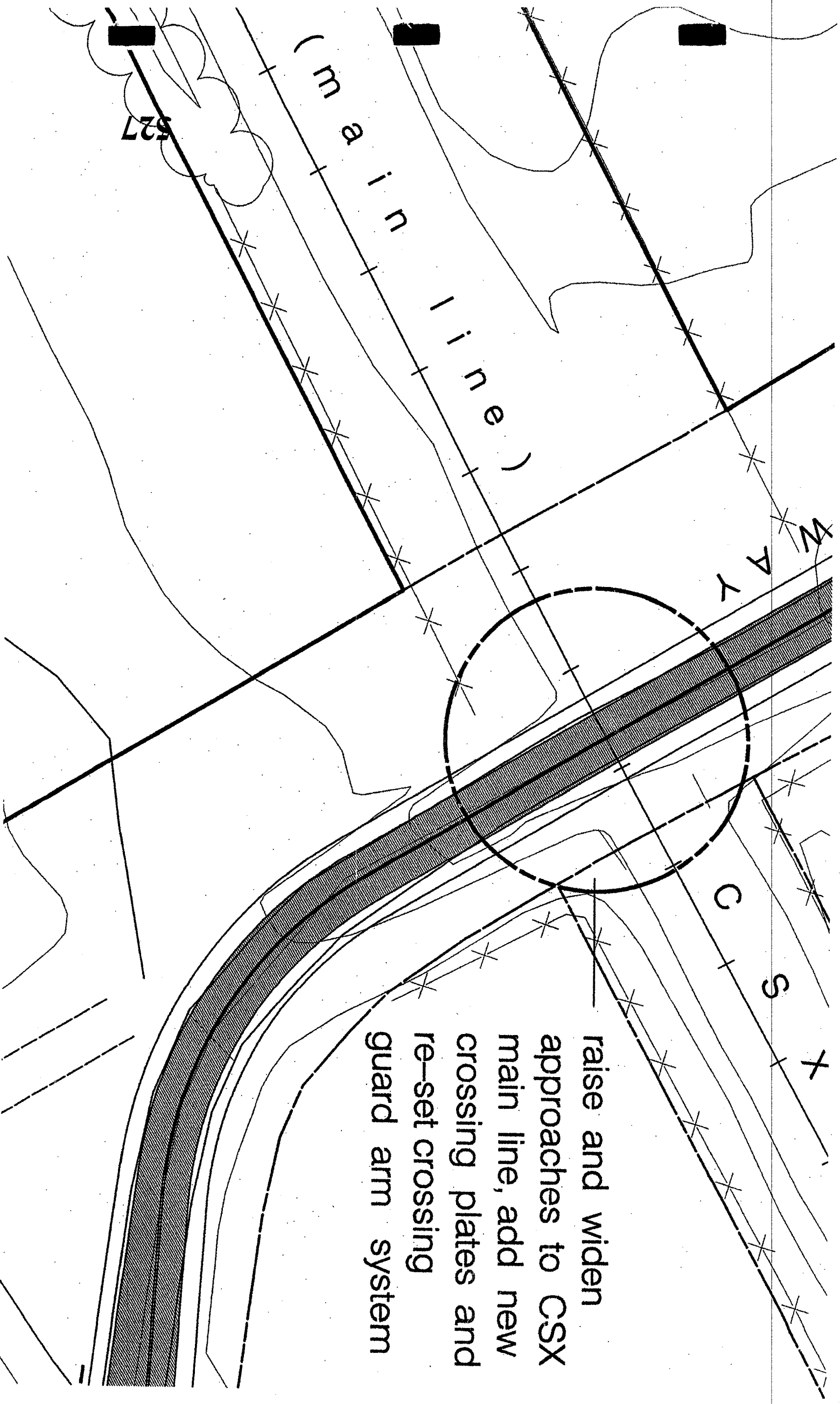
Riley D. Wampler, Court Clerk



J. Allan Watson, County Mayor



raise and widen  
approaches to CSX  
main line, add new  
crossing plates and  
re-set crossing  
guard arm system



**RESOLUTION 030507-G**

**A RESOLUTION OPPOSING THE URS REMEDIAL ACTION PLAN DATED JANUARY 3, 2007 AND SUBMITTED TO THE TENNESSEE DEPARTMENT OF ENVIRONMENT AND CONSERVATION FOR THE FORMER LENOIR CAR WORKS PROPERTY OWNED BY NORFOLK SOUTHERN REALITY**

Whereas, the Lenoir Car Works property, owned by Norfolk Southern Reality Corp. is a designated State Superfund Site and listed as a hazardous substance site by the Tennessee Department of Environment and Conservation, and

Whereas, the 95-acre property has been an industrial location since the Bass Foundry and Machine Shops were constructed in 1893; being later acquired by the Southern Railroad that used the property to construct boxcars, wooden sided coal cars, and cabooses, and

Whereas, Lenoir City Car Works, Inc. operated a nonferrous foundry at the above location from the 1940's until the facility closed on July 31, 1985, and

Whereas, during occupancy the property was used to produce brass alloy journal bearings for railroad cars by reprocessing used scrap journal bearings that resulted in contamination of the site, the primary pollutant being foundry slag containing lead and arsenic, and

Whereas, ERS, a contractor for Norfolk Southern, has submitted a remediation plan for the property that involves capping a 22 +/- acre section, principally in the center of the 95 acres, with 18" of compacted clay and 6" of top soil, and

Whereas, said remediation plan hinders future reuse of the site for industrial development purposes and locates a hazardous waste landfill within the corporate limits of the City of Lenoir City, Tennessee contrary to existing zoning regulations and the Jackson Law adopted by Loudon County.

Whereas, the Loudon County Economic Development Agency Board of Directors voted unanimously opposing the proposed remediation plan and established a position statement herein attached, said position supported by the Lenoir City Committee of 100, a private nonprofit organization.

Now, Therefore, Be It Resolved, that the City Council of Lenoir City, TN, and Loudon County Commission concur with the position statement of the Loudon County Economic Development Agency opposing the proposed URS/ERS remedial action plan being considered by the Tennessee Department of Environment Conservation for the Lenoir Car Works property.


Be It Further Resolved, that the legislative bodies concur that cost effective alternatives exist which would reduce the environmental footprint of the hazardous waste landfill and

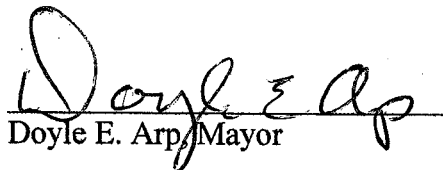
allow for future redevelopment of the site for industrial benefits to Loudon County, City of Lenoir City, East Tennessee Region and State of Tennessee.

Be It Finally Resolved that this Resolution be adopted immediately the public welfare and safety requiring it.

By: Loudon County Commission

Adopted the 5<sup>th</sup> day of March, 2007


  
Roy Bledsoe, Chairman

  
Doyle E. Arp, Mayor

By: Lenoir City City Council

Adopted the 26<sup>th</sup> day of February,  
2007

  
Debbie Cook, City Recorder

  
Matt Brookshire, Mayor



## MEMORANDUM

To: Lenoir City City Council  
Loudon County Commission  
From: Patrick Phillips  
Date: February 21, 2007  
Subject: Lenoir Car Works Remedial Action Plan

On Thursday, February 1, 2007, the Tennessee Department of Environment and Conservation conducted a public meeting to solicit comments regarding a proposed remedial action plan for the Lenoir Car Works property. The Department will accept comments until the close of business on March 9, 2007.

Currently owned by Norfolk Southern Railroad, the site has been abandoned the past 22 years. The site is contaminated with lead and arsenic resulting from almost 100 years of use primarily for the production of rail car wheels. The contaminants are typically mixed in with sand that ranges in depth from 1' to 8'. The site also contains demolition material as a result of the razing of the powerhouse and other incidental structures.

The proposed remedial action plan proposed by Norfolk Southern involves the placement of a clay cap over the high-elevated lead and arsenic areas consisting of 18" of clay and 6" of top soil. The purpose of the cap is to establish a barrier between the contaminants and human contact. As reflected in the attached drawing, the 22-25 acre capped area is concentrated primarily in the center of the site. The proposed plan is not based on future reuse of the site, but only to provide the minimum level of remediation that the State is willing to accept.

The Car Works site is a 95-acre industrial area located in the center of the City. The site represents probably the best and most viable option for future industrial use within Lenoir City. If the proposed plan is approved and implemented the likelihood of future reuse of the site for industrial use will be jeopardized by the presence of the contaminants and cap located in the center of the site. Any disturbance of the cap for grading of utilities, roads or building foundations will require resubmitting of plans to TDEC. The additional cost imposed by the cap will further serve to deter future reuse.

Over the last several years this Agency as well as the City of Lenoir City have made numerous attempts to negotiate a purchase of the site subject to due diligence. The City is a recipient of a U.S. Environmental Protection Agency assessment grant that is

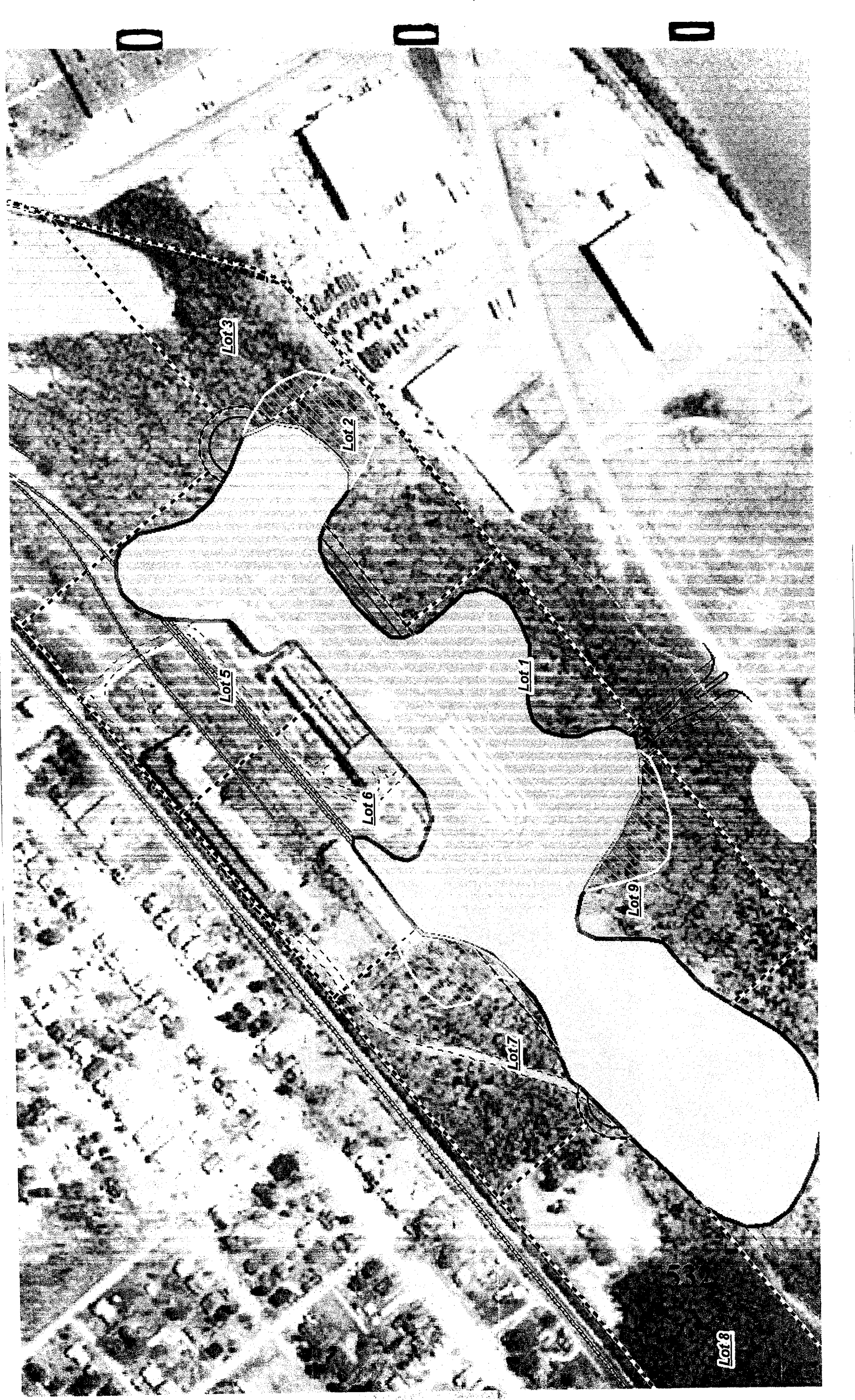
intended to assess the environmental issues of the site and develop a remediation plan that incorporates redevelopment opportunities. Norfolk Southern has continually rejected efforts to access to the site for geotechnical and environmental analysis. While the City has been able to utilize a portion of the grant for preliminary design and off-site analysis a large portion of the funds will ultimately be returned to EPA if access is not obtained.

The EDA Board of Directors voted on January 25 to oppose the plan based on several factors:

- The remediation plan is not based on a plan for reuse as an industrial site
- The proposed soil cap will be breached if utilities, roads or building foundations are contemplated
- The remediation plan is essentially a hazardous waste landfill located in the heart of the City
- Loudon County adopted the Jackson Law to control the location of landfills within the unincorporated areas of the County and incorporated areas if the municipality has not adopted the Legislation. The Jackson Law requires approval of the County Commission prior to locating a waste disposal facility.
- Insufficient investigation has been performed to date to determine whether there are other contaminants of concern at this time.
- Although TDEC is supporting industrial use standards for implementing the cap, the proposed plan will not support industrial use. Subsequently TDEC should require that the site be cleaned to residential standards or the area of contamination reduced to a smaller more manageable footprint that allows for future industrial development.

From an economic, environmental and planning perspective I consider the remediation plan insufficient and contrary to the community's interests both short and long term. There appears to be no consideration to the ultimate reuse of the site based on the remediation plan proposed by Norfolk Southern and its contractor ERS. Plans to place a hazardous waste landfill within the City of Lenoir City will only serve to decrease property values, destroy an otherwise viable developable site and limit employment and revenues for the County and City. Based on a conservative development investment of \$25,000,000, the loss of annual property tax revenues is estimated at \$310,000. I encourage both legislative bodies to endorse EDA's position on the Car Works site.

Attached is a position statement prepared for EDA by S&ME, our consulting environmental engineer conducting the assessment activities on the site as well as C2RL a subcontractor through S&ME who is the lead civil engineer.



Lot 3

Lot 2

Lot 1

Lot 9

Lot 5

Lot 6

Lot 7

Lot 8

February 21, 2007

State of Tennessee  
Department of Environment and Conservation  
Division of Remediation  
4<sup>th</sup> Floor, L&C Annex  
401 Church Street  
Nashville, Tennessee 37243-1538

Attention: Andy Binford

**SUBJECT: POSITION STATEMENT- URS DRAFT REMEDIAL ACTION PLAN  
FORMER LENOIR CAR WORKS**

Lenoir City, Tennessee  
S&ME Project No. 1434-04-288  
TDEC Site No. 53-503

Dear Mr. Binford:

The Loudon County Economic Development Agency (LCEDA) is herein submitting our comments as a statement of our position concerning the URS Corporation *Draft Remedial Action Plan, Former Lenoir Car Works, Lenoir City, Tennessee, (Plan)* dated January 3, 2007. LCEDA understands that Environmental Risk Solutions, LLC (ERS) is under contract with Norfolk Southern Corporation (NSC), and this revised Plan was developed for ERS, in anticipation of proposed remedial activities at the Former Lenoir Car Works site (the Site). LCEDA further understands that URS, on behalf of ERS, revised this Plan to address the comments and requirements issued by the Tennessee Department of Environment and Conservation (TDEC), Division of Remediation in correspondence dated May 24 and August 15, 2006. LCEDA has also reviewed the four criteria required under the Hazardous Waste Management Act Part 2 that TDEC must consider when evaluating containment and cleanup actions. Based on these understandings, LCEDA offers the following comments:

1. In section 4.2.5, the Plan states, "prior to cover installation, site construction debris (i.e., brick rubble) may be used to level low lying areas within the cover boundaries". This section further states, "a flat drum roller with vibrator will be used to level the site in preparation of the cover construction". LCEDA is concerned that utilizing this rubble to level low lying areas creates settling concerns and may prohibit use of these areas for industrial redevelopment. The plan does not specify minimum or maximum particle size

of the rubble to be used as fill prior to placement beneath the proposed soil cover system. Since presumably large concrete pieces could be left beneath the clay cover, this prompts concerns that this debris and the overlying cap would have to be removed to facilitate industrial redevelopment. LCEDA requests that TDEC consider options to ensure that this debris is processed to a workable size, removed, or consolidated in a portion of the Site less likely to be redeveloped.

2. Section 4.2.5 of the Plan also states that "areas with existing concrete foundations will be cleaned of surficial debris and will be left uncovered". LCEDA believes that by installing this soil cover system around existing foundations that are left uncovered, this will prohibit positive surface drainage across the site, create ponding of surface water and result in erosion of the proposed cap. In addition, leaving these areas uncovered will further limit the areas suitable for redevelopment or add to redevelopment costs to infill these areas.
3. The Plan does not address offsite concerns that have previously been raised by TDEC.
4. The Plan states that the materials that will be used to construct the proposed cover system will be imported from an off site borrow area. LCEDA would like to know where the borrow area is located.
5. LCEDA questions whether spreading rubble beneath the proposed cover system is consistent with the Tennessee Division of Solid Waste Management (DSWM) requirements for consolidation and disposal of demolition debris in areas measuring less than one acre in size without a permit.
6. LCEDA questions whether the compaction specified in the Plan can be achieved over the rubble. If the required compaction is not achieved consistently across the site, structural failure of the proposed cover system may occur. LCEDA is concerned as to whom will be financially responsible for repairs to the soil cover system should failure occur following transfer of ownership and redevelopment of the property. Since transfer of the property ownership could relieve NSC/ERS of their liability for continued maintenance of the cover system, LCEDA believes that these concerns be addressed prior to transfer of property ownership

7. Historical topographic information available to LCEDA has several discrepancies with contour elevations that appear to be unreliable for planning purposes. Has ERS or URS performed a recent topographic survey and, if so, is it available? LCEDA requests the opportunity to review available topographic maps to assist with the evaluation of the proposed Plan.
8. If the proposed additional assessment and clean up is deemed appropriate by TDEC for commercial and industrial redevelopment, this implies that NSC has assessed the site sufficiently to know that their remedial effort is adequate. LCEDA has previously conveyed to TDEC their concerns that historical environmental investigations performed by NSC and their consultants have primarily limited their focus to arsenic and lead. Based upon historical uses of the property, LCEDA believes that the potential exists that other constituents of concern may also be present at the site. Subsequently, LCEDA believes that additional assessment of the property is warranted. However, based upon results of our meeting with you in your office on April 20, 2006, TDEC is willing to provide blanket coverage for all potential constituents of concern under a Brownfield agreement based upon the existing assessment data provided by NSC and their consultants.
9. Section 4.1 of the Plan states that "institutional controls and ongoing operations and maintenance of the remedy will ensure its reliability and efficiency". How will future redevelopment of the site affect ongoing operation and maintenance of the cover system?
10. The Plan discusses TDEC permitting requirements, but does not mention whether Corps verification of the potentially jurisdictional features has been obtained. Is a Corps verification letter available? Has Corps authorization for proposed impacts to ephemeral or intermittent drainage channels been obtained?
11. The Plan lists the permanent cover seeding mixtures that will be used to establish permanent vegetative ground cover in the proposed soil cover areas. Section 4.2.10 of the Plan specifies the operation and maintenance requirements that are proposed to be

implemented to ensure that the protective measures remain in good condition. However, the Plan does not address other types of vegetation that may migrate onto the proposed soil cover system. LCEDA is concerned that the plan does not address vegetation such as trees and their root systems that may compromise the structural integrity of the soil cover system. In addition, LCEDA believes that TDEC should consider the types of vegetation suitable for landscaping as part of industrial redevelopment of the site. Certain types of trees and shrubs used for landscaping purposes may be less likely to compromise the proposed cover system. LCEDA requests that the proposed plan be revised to include types of landscaping vegetation that may be used for future redevelopment scenarios

12. LCEDA and Lenoir City representatives have previously expressed their interest in the potential for industrial redevelopment of the property. However, the most recent requests by LCEDA and their representatives to access the property for evaluation of existing site conditions have been denied by NSC. LCEDA would like to have access to the site during implementation of the proposed activities to document conditions before and during the remedial effort, for future planning purposes.
13. LCEDA and Lenoir City representatives would like to use available Brownfield Assessment funds to perform a geotechnical assessment of the site prior to placement of the soil cover system. A geotechnical investigation would allow LCEDA to evaluate current subsurface conditions before the area is covered. Test pits would provide information on existing foundations, utility corridors, potential organics beneath the foundry sand, and general subsurface conditions. This information would be useful for potential site redevelopment planning purposes, and the test pit locations can be better determined before the site is covered as proposed in the URS Plan.
14. LCEDA believes that if industrial use is the criteria for the proposed clean up levels, then the Site remedy needs to meet these criteria and be useful for industrial redevelopment. Otherwise, residential clean up criteria would be applicable.
15. ERS acknowledges in the January 2007 Fact Sheet that additional assessment may be warranted prior to site development. Given the variability of lead concentrations across the site, potentially hazardous materials may be identified during the additional assessment that ERS acknowledges may be necessary. If other impacts are detected,

covering". LCEDA believes that the construction of the proposed soil cover system over the foundry sands at the site would by definition constitute installation of a hazardous waste landfill within the Lenoir City limits. Subsequently, LCEDA believes that approval must be granted by the Loudon County Commission to NSC in order for the URS Plan to be implemented as proposed. However, LCEDA may be willing to negotiate current established county resolutions with TDEC and NSC regarding construction of this landfill under the guidelines proposed in Item 17.

LCEDA appreciates the opportunity to comment on the proposed remedial activities for the former Lenoir City Car Works site. As you are aware, our agency, local government representatives and the citizens of Lenoir City are interested in a remedial action that will not hinder our efforts to return value to this blighted property.

Sincerely;

Patrick Phillips, President

**Loudon County  
General Fund 101  
Ending June 30, 2007**

	A	B	C	D	E	F	G	H
1			<b>General Fund 101</b>					
2	<b>Account</b>		2/26/2007 14:11	<b>2007</b>	<b>2007</b>	<b>Approved</b>	<b>Proposed</b>	<b>Proposed</b>
3	<b>Number</b>			<b>Org Bgt</b>	<b>Amds</b>	<b>Amded Bgt</b>	<b>Amds</b>	<b>Amded Budget</b>
311	51300		County Mayor					
312	101		County Official/Administrative Officer	73,305		73,305		73,305
313	103		Assistant	34,360		34,360		34,360
314	161		Secretary(s)	35,020		35,020		35,020
315	168		Temporary Personnel	0		0		0
316	187		Overtime Wages	2,000		2,000		2,000
317	201		Social Security	8,970		8,970		8,970
318	204		State Retirement	13,702	29	13,731		13,731
319	206		Life Insurance		145	145		145
320	207		Medical Insurance		10,762	10,762		10,762
321	208		Dental Insurance		675	675		675
322	212		Employer Medicare	2,098		2,098		2,098
323	307		Communication	4,200		4,200		4,200
324	320		Dues and Memberships	2,000		2,000		2,000
325	338		Maintenance and Repair Services - Veh	500		500		500
326	355		Travel	1,800		1,800		1,800
327	399		Other Contracted Services	0		0		0
328	425		Gasoline	1,000		1,000		1,000
329	435		Office Supplies	2,000		2,000		2,000
330	508		Premium on Corporate Surety Bonds	175		175		175
331	719		Office Equipment	100		100		100
332								
333			Total County Mayor	181,230	11,611	192,841	0	192,841
334								
335	51400		Legal Fees					
336	331		Legal Services	130,000	(60,000)	70,000	(10,300)	59,700
337	399		Other Contracted Services	25,000	47,670	72,670		72,670
338								
339			Total Legal Fees	155,000	(12,330)	142,670	(10,300)	132,370

**Exhibit 030507-H**

**Loudon County  
General Fund 101  
Ending June 30, 2007**

	A	B	C	D	E	F	G	H
1			<b>General Fund 101</b>					
2	<b>Account</b>		2/26/2007 14:11	<b>2007</b>	<b>2007</b>	<b>Approved</b>	<b>Proposed</b>	<b>Proposed</b>
3	<b>Number</b>			<b>Org Bgt</b>	<b>Amds</b>	<b>Amded Bgt</b>	<b>Amds</b>	<b>Amded Budget</b>
4								
697								
698	53300		General Sessions Court					
699	162		Clerical Personnel	205,554	16,186	221,740	0	221,740
700	168		Temporary Personnel	7,000		7,000		7,000
701	169		Part-time Personnel	14,000		14,000		14,000
702	187		Overtime Pay	7,000		7,000		7,000
703	201		Social Security	14,480	1,004	15,484	0	15,484
704	204		State Retirement	20,129	1,578	21,707		21,707
705	206		Life Insurance		400	400		400
706	207		Medical Insurance		33,500	33,500		33,500
707	208		Dental Insurance		3,500	3,500		3,500
708	212		Employer Medicare	3,387	234	3,621	0	3,621
709	196		In-Service Training	0		0		0
710	307		Communication	2,000		2,000		2,000
711	308		Consultants	0	6,000	6,000	0	6,000
712	320		Dues and Memberships	350		350		350
713	331		Legal Services	0	4,330	4,330		4,330
714	349		Printing, Stationery, and Forms	10,000		10,000		10,000
715	355		Travel	2,000		2,000		2,000
716	399		Other Contracted Services (LGDP)	10,000		10,000		10,000
717	435		Office Supplies	10,000		10,000		10,000
718	524		In Service/Staff Development	2,000		2,000		2,000
719	719		Office Equipment	0	3,000	3,000	2,860	5,860
720								
721			Total General Sessions Court	307,900	69,732	377,632	2,860	380,492
722								
723								
724								
725								

**Loudon County  
General Fund 101  
Ending June 30, 2007**

	A	B	C	D	E	F	G	H
1			<b>General Fund 101</b>					
2	<b>Account</b>		2/26/2007 14:11	2007	2007	Approved	Proposed	Proposed
3	<b>Number</b>			Org Bgt	Amds	Amded Bgt	Amds	Amded Budget
4								
885	54210		Jail Department					
886	160		Guards	611,911		611,911		611,911
887	165		Cafeteria Personnel	49,440		49,440		49,440
888	169		Part-time Personnel	3,644		3,644		3,644
889	187		Overtime Wages	35,000		35,000		35,000
890	201		Social Security	43,400		43,400		43,400
891	204		State Retirement	65,944	140	66,084		66,084
892	206		Life Insurance		1,006	1,006		1,006
893	207		Medical Insurance		135,503	135,503		135,503
894	208		Dental Insurance		8,922	8,922		8,922
895	212		Employer Medicare	10,150		10,150		10,150
896	331		Legal Services	0		0	10,300	10,300
897	355		Travel	1,000		1,000		1,000
898	399		Other Contracted Services	7,500		7,500		7,500
899	410		Custodial Supplies	11,000		11,000		11,000
900	413		Drugs and Medical Supplies (Inmates)	75,000		75,000		75,000
901	422		Food Supplies (Inmates)	72,000		72,000		72,000
902	435		Office Supplies	6,500		6,500		6,500
903	451		Uniforms	8,500		8,500		8,500
904	499		Other Supplies and Materials (Inmate S	15,000		15,000		15,000
905								
906			Total Jail Department	1,015,989	145,571	1,161,560	10,300	1,171,860

**Loudon County  
General Fund 101  
Ending June 30, 2007**

	A	B	C	D	E	F	G	H
1			<b>General Fund 101</b>					
2	<b>Account</b>		<b>2/26/2007 14:11</b>	<b>2007</b>	<b>2007</b>	<b>Approved</b>	<b>Proposed</b>	<b>Proposed</b>
3	<b>Number</b>			<b>Org Bgt</b>	<b>Amds</b>	<b>Amded Bgt</b>	<b>Amds</b>	<b>Amded Budget</b>
4								
1288								
1289	58900		Miscellaneous / Building & Contents Insurance					
1290	502		Building and Contents Insurance	270,000		270,000		270,000
1291	508		Premiums on Corporate Surety Bonds			0		0
1292	510		Trustee's Commission	200,000		200,000		200,000
1293	599		Other Charges	9,500		9,500		9,500
1294								
1295			Total Misc./Building & Contents Insura	479,500	0	479,500	0	479,500
1296								
1297			<b>Total Other General Government</b>	<b>3,145,165</b>	<b>(1,186,102)</b>	<b>1,959,063</b>	<b>0</b>	<b>1,959,063</b>
1298								
1299								
1300			<b>Total Expenditures</b>	<b>13,828,253</b>	<b>850,780</b>	<b>14,679,033</b>	<b>2,860</b>	<b>14,681,893</b>
1301								
1302	99100		Transfers Out					
1303	590		Transfers to Recycling/Conv. Centers			0		0
1304								
1305			<b>Total Transfers Out</b>	<b>0</b>	<b>0</b>	<b>0</b>	<b>0</b>	<b>0</b>
1306								
1307			<b>Total Expenditures and Transfers Out</b>	<b>13,828,253</b>	<b>850,780</b>	<b>14,679,033</b>	<b>2,860</b>	<b>14,681,893</b>
1308								
1309								
1310								

**Loudon County  
General Fund 101  
Ending June 30, 2007**

	A	B	C	D	E	F	G	H
1			<b>General Fund 101</b>					
2	<b>Account</b>		2/26/2007 14:11	<b>2007</b>	<b>2007</b>	<b>Approved</b>	<b>Proposed</b>	<b>Proposed</b>
3	<b>Number</b>			<b>Org Bgt</b>	<b>Amds</b>	<b>Amded Bgt</b>	<b>Amds</b>	<b>Amded Budget</b>
4								
1311								
1312								
1313								
1314								
1315								
1316	<b>July 1, 2006 Fund Balance Per Year End</b>			<b>3,402,200</b>		<b>3,402,200</b>		<b>3,402,200</b>
1317			(Unaudited)					
1318								
1319								
1320								
1321								
1322	<b>Total Revenue</b>			<b>13,272,189</b>	<b>386,184</b>	<b>13,658,373</b>	<b>0</b>	<b>13,658,373</b>
1323	<b>Transfers In</b>			<b>192,750</b>	<b>1,644</b>	<b>194,394</b>	<b>0</b>	<b>194,394</b>
1324								
1325	<b>Total Revenue and Transfers In</b>			<b>13,464,939</b>	<b>387,828</b>	<b>13,852,767</b>	<b>0</b>	<b>13,852,767</b>
1326								
1327								
1328								
1329	<b>Total Available Funds</b>			<b>17,003,350</b>	<b>387,828</b>	<b>17,391,178</b>	<b>2,860</b>	<b>17,394,038</b>
1330								
1331	<b>Expenditure Budget</b>			<b>13,828,253</b>	<b>850,780</b>	<b>14,679,033</b>	<b>2,860</b>	<b>14,681,893</b>
1332	<b>Transfers Out</b>			<b>0</b>	<b>0</b>	<b>0</b>	<b>0</b>	<b>0</b>
1333								
1334	<b>Total Expenditures and Transfer Out</b>			<b>13,828,253</b>	<b>850,780</b>	<b>14,679,033</b>	<b>2,860</b>	<b>14,681,893</b>
1335								
1336	<b>Ending Fund Balance</b>			<b>3,175,097</b>	<b>(462,952)</b>	<b>2,712,145</b>	<b>0</b>	<b>2,712,145</b>
1337								
1338								

Loudon County  
Highway Fund 131  
Ending June 30, 2007

	A	B	C	D	E	F	G	H
1			<b>Highway Dept 131</b>					
2	<b>Account</b>		2/28/2007 14:25	<b>2006</b>	<b>2006</b>	<b>Approved</b>	<b>Proposed</b>	<b>Proposed</b>
3	<b>Number</b>			<b>Org Bgt</b>	<b>Amds</b>	<b>Amded Bgt</b>	<b>Amds</b>	<b>Amded Budget</b>
4								
65								
66	<b>Total Highway/Public Works Expenditures</b>							
67	60000		Highways					
68	61000		Administration					
69	101		County Official/Adm Officer	63,876		63,876		63,876
70	140		Salary Supplements	5,000		5,000		5,000
71	141		Foremen	72,302		72,302		72,302
72	142		Mechanics	60,750		60,750		60,750
73	143		Equipment Operators	132,186		132,186		132,186
74	147		Truck Drivers	212,119		212,119		212,119
75	162		Clerical Personnel	24,509		24,509		24,509
76	187		Overtime Pay	15,000		15,000		15,000
77	206		Life Insurance			0		0
78	207		Medical Insurance			0		0
79	208		Dental Insurance			0		0
80	302		Advertising	250		250		250
81	320		Dues & Memberships	3,270	340	3,610		3,610
82	331		Legal Services	2,500		2,500		2,500
83	337		Maintenance - Office Equipment	100	100	200		200
84	348		Postal Charges	300		300		300
85	349		Printing, Stationery & Forms	100		100		100
86	355		Travel	4,000		4,000		4,000
87	435		Office Supplies	2,000		2,000	2,000	4,000
88	524		In-Service/Staff Development	500	(340)	160	500	660
89	719		Office Equipment	500	(100)	400	3,000	3,400
90								
91			Total Administration	599,262	0	599,262	5,500	604,762
92								
93	<b>Amendments considered by Budget Committee Feb 26, 2007; County Commission March 5, 2007</b>							

Exhibit 030507-1

**Loudon County  
Highway Fund 131  
Ending June 30, 2007**

	A	B	C	D	E	F	G	H
1			<b>Highway Dept 131</b>					
2	<b>Account</b>		2/28/2007 14:25	<b>2006</b>	<b>2006</b>	<b>Approved</b>	<b>Proposed</b>	<b>Proposed</b>
3	<b>Number</b>			<b>Org Bgt</b>	<b>Amds</b>	<b>Amded Bgt</b>	<b>Amds</b>	<b>Amded Budget</b>
4								
94	62000		Highway and Bridge Maintenance					
95	321		Engineering Services	10,000		10,000		10,000
96	323		Explosive and Drilling Services	150		150		150
97	351		Rentals	3,600		3,600		3,600
98	399		Other Contracted Services	25,000		25,000		25,000
99	403		Asphalt - Cold Mix	15,000		15,000		15,000
100	404		Asphalt - Hot Mix	300,000		300,000		300,000
101	408		Concrete	3,500		3,500		3,500
102	409		Crushed Stone	25,000		25,000		25,000
103	438		Pipe	21,500	(2,000)	19,500		19,500
104	443		Road Signs	12,000		12,000	3,000	15,000
105	444		Salt	10,000		10,000		10,000
106	445		Sand	1,500		1,500		1,500
107	468		Chemicals	4,000		4,000		4,000
108								
109			Total Highway & Bridge Maintenance	431,250	(2,000)	429,250	3,000	432,250
110								
111								
112								
113								
114								

Loudon County  
Highway Fund 131  
Ending June 30, 2007

	A	B	C	D	E	F	G	H
1			<b>Highway Dept 131</b>					
2	<b>Account</b>		2/28/2007 14:25	<b>2006</b>	<b>2006</b>	<b>Approved</b>	<b>Proposed</b>	<b>Proposed</b>
3	<b>Number</b>			<b>Org Bgt</b>	<b>Amds</b>	<b>Amded Bgt</b>	<b>Amds</b>	<b>Amded Budget</b>
4								
115	63100		Operation & Maintenance of Equipment					
116	338		Maintenance & Repair Vehicles	12,000	18,000	30,000		30,000
117	353		Tow-In Services	2,000	2,000	4,000		4,000
118	359		Disposal Fees	36,050		36,050	(8,000)	28,050
119	412		Diesel Fuel	40,000		40,000		40,000
120	416		Equipment Parts - Heavy	12,000		12,000	(2,000)	10,000
121	417		Equipment Parts - Light	60,000		60,000		60,000
122	425		Gasoline	30,000		30,000		30,000
123	433		Lubricants	5,500		5,500		5,500
124	450		Tires and Tubes	15,000		15,000		15,000
125	446		Small Tools			0		0
126	499		Other Supplies & Materials	7,516		7,516	1,500	9,016
127	599		Other Charges	650		650		650
128								
129			Total Operation & Maint of Equip	220,716	20,000	240,716	(8,500)	232,216
130								
131								

Loudon County  
Highway Fund 131  
Ending June 30, 2007

	A	B	C	D	E	F	G	H
1			<b>Highway Dept 131</b>					
2	<b>Account</b>		2/28/2007 14:25	<b>2006</b>	<b>2006</b>	<b>Approved</b>	<b>Proposed</b>	<b>Proposed</b>
3	<b>Number</b>			<b>Org Bgt</b>	<b>Amds</b>	<b>Amded Bgt</b>	<b>Amds</b>	<b>Amded Budget</b>
4								
176								
177	80000		Debt Service					
178								
179								
180	82120		Highways and Streets					
181	602		Principal on Notes	119,167		119,167		119,167
182								
183			Total Principal on Notes	119,167	0	119,167	0	119,167
184								
185								
186								
187	82220		Highways and Streets					
188	604		Intrest on Notes	51,153		51,153		51,153
189						0		0
190			Total Interest on Notes	51,153	0	51,153	0	51,153
191								
192	<b>Total Debt Service</b>			<b>170,320</b>	<b>0</b>	<b>170,320</b>	<b>0</b>	<b>170,320</b>
193								
194								
195	<b>Total Expenditures</b>			<b>2,355,439</b>	<b>58,117</b>	<b>2,413,556</b>	<b>0</b>	<b>2,413,556</b>
196								
197								
198								
199								

Loudon County  
Highway Fund 131  
Ending June 30, 2007

	A	B	C	D	E	F	G	H
1			<b>Highway Dept 131</b>					
2	<b>Account</b>		2/28/2007 14:25	2006	2006	Approved	Proposed	Proposed
3	<b>Number</b>			Org Bgt	Amds	Amded Bgt	Amds	Amded Budget
4								
200								
201	<b>Beginning Fund Balance per Year End Report</b>			548,496		548,496		548,496
202								
203								
204								
205	<b>Total Revenue</b>			2,341,835	14,370	2,356,205	0	2,356,205
206								
207								
208	<b>Total Available Funds</b>			2,890,331	14,370	2,904,701	0	2,904,701
209								
210	<b>Expenditure Budget</b>			2,355,439	58,117	2,413,556	0	2,413,556
211								
212	<b>Total Expenditures and Transfer Out</b>			2,355,439	58,117	2,413,556	0	2,413,556
213								
214	<b>Ending Fund Balance</b>			534,892	(43,747)	491,145	0	491,145
215								
216								

Loudon County  
General Fund 141  
Ending June 30, 2007

	A	B	C	D	E	F	G	H
1			<b>General Fund 141</b>					
2	<b>Account</b>		2/28/2007 13:39	<b>2007</b>	<b>2007</b>	<b>Approved</b>	<b>Proposed</b>	<b>Proposed</b>
3	<b>Number</b>			<b>Org Bgt</b>	<b>Amds</b>	<b>Amded Bgt</b>	<b>Amds</b>	<b>Amded Budget</b>
4								
368	72320		<i>Office of the Superintendent</i>					
369	101		County Official/Administrative Office	89,500	0	89,500	0	89,500
370	117		Career Ladder Program	1,000	0	1,000	0	1,000
371	161		Secretary (s)	36,672	0	36,672	0	36,672
372	201		Social Security	8,085	0	8,085	0	8,085
373	204		State Retirement	9,184	0	9,184	0	9,184
374	206		Life Insurance	350	0	350	0	350
375	207		Medical Insurance	14,620	0	14,620	0	14,620
376	208		Dental Insurance	600	0	600	0	600
377	212		Employer Medicare	1,883	0	1,883	0	1,883
378	307		Communication	30,000	(4,000)	26,000	(1,000)	25,000
379	307 SAFE		Communication	0	4,000	4,000	0	4,000
380	348		Postal Charges	4,000	0	4,000	0	4,000
381	355		Travel	40,000	0	40,000	15,000	55,000
382	399		Other Contracted Services	6,500	0	6,500	0	6,500
383	435		Office Supplies	5,000	0	5,000	1,000	6,000
384	599		Other Charges	25,000	(874)	24,126	0	24,126
385	719		Office Equipment	0	874	874	0	874
386								
387			<b>Total Office of the Superintendent</b>	<b>272,394</b>	<b>0</b>	<b>272,394</b>	<b>15,000</b>	<b>287,394</b>
388								
389	<b>Approved by BOE 2/8/07; Recommended by Co Budget Comm 2/26/07; Considered by County Commission 3/5/07</b>							
390								
391								
392								

Exhibit 030507-J



Loudon County  
General Fund 141  
Ending June 30, 2007

	A	B	C	D	E	F	G	H
1			<b>General Fund 141</b>					
2	<b>Account</b>		2/28/2007 13:39	<b>2007</b>	<b>2007</b>	<b>Approved</b>	<b>Proposed</b>	<b>Proposed</b>
3	<b>Number</b>			<b>Org Bgt</b>	<b>Amds</b>	<b>Amded Bgt</b>	<b>Amds</b>	<b>Amded Budget</b>
4								
502	73300		<i>Community Services</i>					
503	105		Supervisor/Director	31,089	0	31,089	960	32,049
504	105-LAU		Supervisor/Director	0	5,000	5,000	0	5,000
505	105-LEAP		Supervisor/Director	0	2,000	2,000	0	2,000
506	116-LAU		Teachers	0	0	0	0	0
507	116-LEAP		Teachers	0	13,046	13,046		13,046
508	127-LEAP		Extended Contracts				5,275	5,275
509	162		Clerical Personnel	11,064	0	11,064	(492)	10,572
510	163-LAU		Educational Assistants	0	28,095	28,095	0	28,095
511	163-LEAP		Educational Assistants	0	9,472	9,472		9,472
512	169-LAU		Part-Time Personnel	0	21,229	21,229		21,229
513	189-LAU		Other Salaries & Wages	0	13,560	13,560	0	13,560
514	198-LEAP		Non-Certified Substitute Teachers	0	9,082	9,082	(5,273)	3,809
515	201		Social Security	2,614		2,614	29	2,643
516	201-LAU		Social Security	0	4,562	4,562	0	4,562
517	201-LEAP		Social Security	0	2,083	2,083	0	2,083
518	204		State Retirement	2,953		2,953	82	3,035
519	204-LAU		State Retirement	0	2,806	2,806	0	2,806
520	204-LEAP		State Retirement	0	792	792		792
521	206		Life Insurance	170		170	20	190
522	206-LAU		Life Insurance	0	0	0		0
523	206-LEAP		Life Insurance	0		0		0
524	207		Medical Insurance	5,500		5,500	100	5,600
525	207-LAU		Medical Insurance	0	5,600	5,600		5,600
526	208		Dental Insurance	260		260	30	290
527	208-LAU		Dental Insurance	0	0	0	0	0
528	212		Employer Medicare	612		612	6	618
529	212-LAU		Employer Medicare	0	1,067	1,067	0	1,067
530	212-LEAP		Employer Medicare	0	487	487		487
531	355		Travel	2,200		2,200	(450)	1,750
532	355-LAU		Travel	0	1,000	1,000		1,000
533	355-LEAP		Travel	0	2,500	2,500	0	2,500
534	399-LAU		Other Contracted Services	0	5,700	5,700	0	5,700
535	399-LEAP		Other Contracted Services	0	2,700	2,700	0	2,700
536	429-LAU		Instructional Supplies	0	1,881	1,881	0	1,881
537	429-LEAP		Instructional Supplies	0	7,200	7,200	(2)	7,198
538	499		Other Supplies and Materials	1,500		1,500	909	2,409
539	599		Other Charges	1,950		1,950	(1,194)	756
540	599-LAU		Other Charges	0	4,500	4,500	0	4,500
541								
542			<b>Total Community Services</b>	<b>59,912</b>	<b>144,363</b>	<b>204,275</b>	<b>0</b>	<b>204,275</b>
543								

Loudon County  
General Fund 141  
Ending June 30, 2007

	A	B	C	D	E	F	G	H
1			<b>General Fund 141</b>					
2	<b>Account</b>		2/28/2007 13:39	<b>2007</b>	<b>2007</b>	<b>Approved</b>	<b>Proposed</b>	<b>Proposed</b>
3	<b>Number</b>			<b>Org Bgt</b>	<b>Amds</b>	<b>Amded Bgt</b>	<b>Amds</b>	<b>Amded Budget</b>
4								
610	80000		<b>Debt Service</b>					
611								
612	82130		<i>Principal</i>					
613	601		Principal On Bonds	275,300	(82,171)	193,129	0	193,129
614	602		Principal on Notes	71,426	0	71,426		71,426
615								
616				346,726	(82,171)	264,555	0	264,555
617								
618								
619	82300		<b>Other Debt Service</b>					
620								
621	82330		<i>Education</i>					
622	699		Other Debt Service	461,000	0	461,000	0	461,000
623								
624			<b>Total Education Debt Service</b>	461,000	0	461,000	0	461,000
625								
626								
627	80000		<b>Total Education Debt Service</b>	807,726	(82,171)	725,555	0	725,555
628								
629	90000		<b>Capital Projects</b>					
630								
631	99100							
632	590		Transfer out	0	1,794,520	1,794,520	0	1,794,520
633								
634			<b>Total Expenditures</b>	32,481,344	2,722,886	35,204,230	15,000	35,219,230
635								
636			<b>Total Other Uses</b>	0	0	0	0	0
637								
638			<b>Total General Purpose School</b>	32,481,344	2,722,886	35,204,230	15,000	35,219,230
639								
640								

Loudon County  
General Fund 141  
Ending June 30, 2007

	A	B	C	D	E	F	G	H
1			<b>General Fund 141</b>					
2	<b>Account</b>		2/28/2007 13:39	2007	2007	Approved	Proposed	Proposed
3	<b>Number</b>			Org Bgt	Amds	Amded Bgt	Amds	Amded Budget
4								
641								
642								
643	<b>Beginning Fund Balance (Unaudited)</b>			5,279,137		5,279,137		5,279,137
644								
645								
646	<b>Total Revenue</b>			32,281,353	822,366	33,103,719	0	33,103,719
647								
648								
649	<b>Total Available Funds</b>			37,560,490	822,366	38,382,856	0	38,382,856
650								
651								
652	<b>Total Expenditures</b>			32,481,344	2,722,886	35,204,230	15,000	35,219,230
653								
654								
655	<b>Estimated Ending Fund Balance</b>			5,079,146	(1,900,520)	3,178,626	(15,000)	3,163,626

**Loudon County  
General Debt Service 151  
Ending June 30, 2007**

	A	B	C	D	E	F	G	H	I	J	K
1											
2					02/24/07	2007	Approved	2007	Proposed	Proposed	
3					2/24/07 1:29 PM	Budget	Amds	Amd	Amds	Amded	
4					Fund 151 General Debt Service			Budget		Budget	
5		<b>REVENUE</b>									
6		40000	Local Taxes								
7			40110		Current Property Taxes	1,053,550		1,053,550		1,053,550	
8			40120		Trustee's Pr Yr	30,000		30,000		30,000	
9			40125		Banruptcy	0		0		0	
10			40130		Clerk and Master's Pr Yr	15,000		15,000		15,000	
11			40140		Interest and Penalty	6,000		6,000		6,000	
12			40150		Pickup Taxes	0		0		0	
13			40163		Payments in Liew of Taxes	0		0		0	
14			40320		Bank Excise Tax	0		0		0	
15											
16					<b>Total Local Revenue</b>	1,104,550	0	1,104,550	0	1,104,550	
17											
18		44000	Other Local Revenue								
19			44110		Interest Earned	52,000		52,000		52,000	
20			44170		Miscellaneous	0		0		0	
21			44514		Revenue from Joint Ventures	162,875		162,875		162,875	
22			44540		Sale of Property	0		0	155,062	155,062	
23			44990		Other Local Revenue	0		0		0	
24											
25					<b>Total Other Local Revenue</b>	214,875	0	214,875	155,062	369,937	
26											
27			<b>TOTAL REVENUE</b>			1,319,425	0	1,319,425	155,062	1,474,487	
28											
29		49000	Other Sources								
30			49800		Transfers In	170,318		170,318		170,318	
31											
32			<b>TOTAL TRANSFERS</b>			170,318	0	170,318	0	170,318	
33											
34			<b>TOTAL REVENUE AND TRANSFERS IN</b>			1,489,743	0	1,489,743	155,062	1,644,805	
35											
36											
37					<i>Considered by Budget Committee Feb 24, 2007; County Commission March 5, 2007</i>						
38											

Exhibit 030507-K

**Loudon County  
General Debt Service 151  
Ending June 30, 2007**

	A	B	C	D	E	F	G	H	I	J	K
1											
2					02/24/07	2007	Approved	2007	Proposed	Proposed	
3					2/24/07 1:06 PM	Budget	Amds	Amd	Amds	Amded	
4					Fund 151 General Debt Service			Budget		Budget	
35											
36		EXPENDITURES									
37											
38		82110	Principal - General Government								
39			601 300K		Principal on Bonds (Ind Park 97-03)	10,000		10,000	139,249	149,249	
40			601 5.36M		Principal on Bonds (Pub Imp 12-1-99)	135,000		135,000		135,000	
41			601 2.015M		Principal on Bonds (Gen Obl 2002)	110,000		110,000		110,000	
42			601 5.225M		Principal on Bonds (Gen Obl 2004)	50,000		50,000		50,000	
43											
44					Total Principal on Bonds	305,000	0	305,000	139,249	444,249	
45											
46			612 5M		Principal on Loans (TCSA 2002)	291,000		291,000		291,000	
47			612 1M		Principal on Loans (II F4)	100,000		100,000		100,000	
48			612 2.7M		Principal on Loans (VI C-4)	240,000		240,000		240,000	
49			612 3M		Principal on Loans (II E3)	150,000		150,000		150,000	
50											
51					Total Principal on Loans	781,000	0	781,000	0	781,000	
52											
53					Total General Gov't Principal	1,086,000	0	1,086,000	139,249	1,225,249	
54											
55											
56		82120	Principal - Highways and Streets								
57			602 330K		Principal on Notes (330K Cap Outlay)	60,967		60,967		60,967	
58											
59					Total Highway Principal	60,967	0	60,967	0	60,967	
60											

**Loudon County  
General Debt Service 151  
Ending June 30, 2007**

	A	B	C	D	E	F	G	H	I	J	K
1											
2					02/24/07	2007	Approved	2007	Proposed	Proposed	
3					2/24/07 1:06 PM	Budget	Amds	Amd	Amds	Amded	
4					Fund 151 General Debt Service			Budget		Budget	
61											
62		82210	Interest - General Government								
63			603 300K		Interest on Bonds (Ind Park 97-03)	7,400		7,400		7,400	
64			603 5.36M		Interest on Bonds (Pub Imp 12-1-99)	23,500		23,500		23,500	
65			603 2.015M		Interest on Bonds (Gen Obl 2002)	13,525		13,525		13,525	
66			603 5.225M		Interest on Bonds (Gen Obl 2004)	180,330		180,330		180,330	
67											
68					Total Interest on Bonds	224,755	0	224,755	0	224,755	
69											
70			613 5M		Interest on Loans (TCSA 2002)	208,338		208,338		208,338	
71			613 1M		Interest on Loans (II F4)	15,750		15,750		15,750	
72			613 2.7M		Interest on Loans (VI C-4)	66,250		66,250		66,250	
73			613 3M		Interest on Loans (II E3)	142,500		142,500		142,500	
74											
75					Total Interest on Loans	432,838	0	432,838	0	432,838	
76											
77					Total General Gov't Interest	667,593	0	667,593	0	667,593	
78											
79											
80		82220	Interest - Highways and Streets								
81			604 330K		Interest on Notes (\$330K Cap Outlay)	12,735		12,735		12,735	
82											
83					Total Highway Interest	12,735	0	12,735	0	12,735	
84											

**Loudon County  
General Debt Service 151  
Ending June 30, 2007**

	A	B	C	D	E	F	G	H	I	J	K
1											
2					02/24/07	2007	Approved	2007	Proposed	Proposed	
3					2/24/07 1:06 PM	Budget	Amds	Amd	Amds	Amded	
4					Fund 151 General Debt Service			Budget		Budget	
85											
86		82310	Other - General Government								
87		510			Trustee's Commission	30,000		30,000		30,000	
88		699			Other Debt Service (Fees)	7,500		7,500		7,500	
89		699 TASS			Other Debt Service (W&T 1998 TASS)	46,303		46,303		46,303	
90		699 TASS			Other Debt Service (91-04 TASS)	49,570		49,570		49,570	
91		699 TASS			Other Debt Service (IV E6 TASS)	47,700		47,700		47,700	
92		699 TASS			Other Debt Service (91-07 TASS)	19,300		19,300		19,300	
93											
94					Total Other General Government	200,373	0	200,373	0	200,373	
95											
96		99100	Transfer Out								
97		590			Transfers to Other Funds	0		0		0	
98											
99					Total Transfers Out	0	0	0	0	0	
100											
101											
102					TOTAL EXPENDITURES	2,017,668	0	2,017,668	139,249	2,156,917	
103											
104											
105											
106					TOTAL REVENUE and TRFS IN	1,489,743	0	1,489,743	155,062	1,644,805	
107					TOTAL EXPENDITURES/TRFS OUT	2,017,668	0	2,017,668	139,249	2,156,917	
108					EFFECT ON FUND BALANCE	(527,925)	0	(527,925)	15,813	(512,112)	
109											
110					BEGINNING FUND BALANCE	2,037,242	0	2,037,242	0	2,037,242	
111											
112		39000			ENDING FUND BALANCE	1,509,317	0	1,509,317	15,813	1,525,130	
113											
114											
115											

# **\$300,000 F.H.A Industrial Park Bonds**

**Series 1977**

**Report Date: 2/24/2007**

<b>Due Date</b>	<b>Principal</b>	<b>Interest</b>	<b>Total P + I</b>
1/1/2007	10,000	3,700	13,700
7/1/2007	0	3,450	3,450
1/1/2008	11,000	3,450	14,450
7/1/2008	0	3,175	3,175
1/1/2009	11,000	3,175	14,175
7/1/2009	0	2,900	2,900
1/1/2010	12,000	2,900	14,900
7/1/2010	0	2,600	2,600
1/1/2011	13,000	2,600	15,600
7/1/2011	0	2,275	2,275
1/1/2012	13,000	2,275	15,275
7/1/2012	0	1,950	1,950
1/1/2013	14,000	1,950	15,950
7/1/2013	0	1,600	1,600
1/1/2014	15,000	1,600	16,600
7/1/2014	0	1,225	1,225
1/1/2015	16,000	1,225	17,225
7/1/2015	0	825	825
1/1/2016	16,000	825	16,825
7/1/2016	0	425	425
1/1/2017	17,000	425	17,425
<b>Total</b>	<b>148,000</b>	<b>44,550</b>	<b>192,550</b>

<b>Summary</b>	
192,550	Total P/I per schedule
(13,700)	P/I due 1/1/07; Pd 12/06
178,850	P/I Balance
(139,249)	Prepay Amount 3/8/07
39,601	Total savings

**GENERAL CAPITAL PROJECTS**

**FUND 171**

**FY 2006 - 2007**

**Amendment Attachment:**

**Budget Committee Feb 26, 2007;**

**County Commission Mar 5, 2007**

<u>Subfund</u>	<u>FY 2006 YE Undesignated Fund Bal 7/1/2006</u>	<u>Estimate FY 06-07 Revenue</u>	<u>Approved Cash Amendments</u>	<u>Total Available</u>	<u>Estimated FY 06-07 Expenses/ Budget</u>	<u>Non Programmed Funds</u>	<u>Proposed Cash Amendments</u>	<u>Estimated Subfund Cash Balance</u>
007	0	288,750		288,750	46,200	242,550	0	242,550
006	395,269	0	(322,082)	73,187	8,700	64,487	(64,487)	0
ADA	118,826	0		118,826	118,826	0	0	0
CHS	10,400	0		10,400	10,400	0	0	0
ECD	0		321,191	321,191	321,191	0	0	0
GIS	198,978	22,000		220,978	28,000	192,978	0	192,978
H11	154,000	0		154,000	154,000	0	0	0
IRE	(198,764)	202,445		3,681	2,500	1,181		1,181
SCC	61,849	138,100	28,354	228,303	228,303	0		0
WBU	10,000	3,000,000		3,010,000	3,010,000	0	0	0
COB	0	0	0	0	7,500	(7,500)	64,487	56,987
BAL	379,124	0	(27,463)	351,661	0	351,661		351,661
<b>Total</b>	<b>1,129,682</b>	<b>3,651,295</b>	<b>0</b>	<b>4,780,977</b>	<b>3,935,620</b>	<b>845,357</b>	<b>0</b>	<b>845,357</b>

Beginning undesignated fund balances were updated based on trial balances as reported at FY 2006 year end report.

"IRE" was not included in the FY 2007 budget because all expenses were budgeted in FY 2006. There was a negative undesignated fund balance at FY 2006 year end because retainage and contracts payables had been established and grant funds had not yet been received.

LOUDON COUNTY  
General Capital Projects  
Fund 171 with Subfunds  
For Fiscal Year Ending June 30, 2007

	A	B	C	D	E	F	G	H	I	J	K	L
						02/28/07 2/28/07 8:55 AM		2007 Original Budget	2007 Budget Amendments	2007 Approved Amded Budget	Proposed Amendments	Proposed Amded Budget
258												
259	<b><u>SUBFUND COB - RENOVATIONS TO COUNTY OFFICE BLDG</u></b>											
260												
261	<b>REVENUE</b>											
262		49000	Other Sources									
263			49800			Transfers In		0		0		0
264												
265						<b>Total Other Sources</b>		0	0	0	0	0
266												
267						<b>TOTAL SUBFUND FUT REVENUE</b>		0	0	0	0	0
268												
269	<b>EXPENDITURES</b>											
270		91110	General Administration Projects									
271			321			Engineering Services		0		0	7,500	7,500
272												
						<b>Total Expenses</b>		0	0	0	7,500	7,500
276						<b>TOTAL SUBFUND FUT EXPENSES</b>		0	0	0	7,500	7,500
277												
278												
279												