

LOUDON COUNTY COMMISSION

REGULAR MEETING

January 06, 2003

- | | | |
|------|---|-----------------------------------|
| (1) | Public Hearing | |
| (2) | Opening Of Meeting | |
| (3) | Roll Call | |
| (4) | Agenda Adopted | |
| (5) | Minutes Adopted For December 02, 2002 | |
| (6) | Audience Comments On Agenda Items | <u>Exhibit A</u> |
| (7) | Animal Control Appointment Approved | <u>Resolution 010603-B</u> |
| (8) | Health Dept. ARC Update | |
| (9) | Building Commission Report | |
| (10) | Browder Farm Rezoning Approved | <u>Resolution 010603-C</u> |
| (11) | Hall Road/Highway 11 Rezoning Approved | <u>Resolution 010603-D</u> |
| (12) | Unitia Road Rezoning Failed (Lack Of 2/3 Vote) | <u>Resolution 010603-E</u> |
| (13) | Beals Chapel Road Rezoning Approved | <u>Resolution 010603-F</u> |
| (14) | Brooksvew Road To Stay Brooksvew Road | |
| (15) | Highway 70 Illegal Dumping Addressed | |
| (16) | Special Called Meeting Scheduled | |
| (17) | Financial Report Distributed | |
| (18) | County Clerk/Executive/Commission Agreement Approved | <u>Resolution 010603-G</u> |
| (19) | Road List 2003 Approved | <u>Exhibit H</u> |
| (20) | Notaries Approved | |
| (21) | Audience Comments On Non-Agenda Items | |
| (22) | Adjournment | |

LOUDON COUNTY COMMISSION

STATE OF TENNESSEE
COUNTY OF LOUDON

PUBLIC HEARING

January 06, 2003

6:00 PM

(1) Public Hearing

1. Request rezoning of property located off Highway 11 West, known as the Browder Farm, at Huntsville Road, Highland Avenue and Riverview Roads, consisting of approximately 276 acres, referenced by Tax Map 29, a portion of Parcel 98.00, located in the 5th Legislative District, from M-1, General Industrial District, to R-1, Suburban Residential District. Owner: John Montgomery [02-11-270-RZ-CO(LEPR)]
No one came forward to speak.
2. Request rezoning of property located at 800 Hall Street and Highway 11 East, referenced by Tax Map 23B, Group F, Parcel 12.00, located in the 2nd Legislative District, from R-1, Suburban Residential District, to C-2, General Commercial District. Agent: Teresa King [02-11-279-RZ-CO(LEPR)]
No one came forward to speak.
3. Request rezoning of property located at 4950 Unitia Road, referenced by Tax Map 47, Parcel 1.02, located in the 3rd Legislative District, consisting of approximately 10 acres, from A-1, Agricultural-Forestry District, to R-1, Suburban Residential District. Owner: Gwen Hargis, Agent: Mike Roach [02-11-294-RZ-CO]
Mr. Mike Roach, Agent, came forward to speak in favor of this rezoning request.
Mr. Al Darn, Mr. Carl Lighton, and Mr. Richard Hawk, neighboring residents, all came forward to speak in opposition of this rezoning request.
4. Request rezoning of property located at 19100 Beals Chapel Road from A-2, Rural Residential District, to R-1, Suburban Residential District, consisting of approximately 35 acres, referenced by Tax Map 31, Parcel 36.00, 6th Legislative District. Owner: Daisy Warren, Agent: Ed Loy [02-11-278-RZ-CO]
Ms. Doris Hayes, Mr. John Hillman, Mr. Nick Alber and Mr. John Gardner, neighboring residents, all came forward to state concerns regarding sewage and water problems if this rezoning request is permitted and requested denial of resolution until additional information is gathered on the development plans of this property.
Mr. Ed Loy, Agent, came forward to speak in favor of this rezoning request and answered questions from concerned citizens.

REGULAR MEETING

2) Opening Of Meeting

3) Roll Call

4) Agenda Adopted

BE IT REMEMBERED that the Board of Commissioners of Loudon County convened in regular session in Loudon, Tennessee on the 6th day of January, 2003.

The **Honorable Roy Bledsoe** called the meeting to order.

Sheriff Tim Guider opened Court, led the Pledge of Allegiance to the Flag of the United States of America, and Mr. Edward Headlee gave the invocation.

Present were the following Commissioners: **Marcus, Meers, Jenkins, Maples, Franke, Bledsoe, Duff, Shaver, and Harold (9).**

Thereupon **Chairman Bledsoe** announced the presence of a quorum. Also present was the **Honorable George Miller, County Executive and County Attorney Harvey Sproul.**

Chairman Bledsoe requested the January 06, 2003 agenda be adopted.

The following modifications were requested:

1. Attorney Sproul requested that an executive session be held following the regular meeting.

2. Commissioner Harold requested that item 6F, "*Loudon County Attorney – Harvey Sproul 1. Any matters to be considered concerning pending litigation*" be removed from the agenda to take place after adjournment due to no action being taken on those items.

A motion was made by Commissioner Harold with a second by Commissioner Maples to adopt agenda with requested change.

Upon voice vote the motion **Passed** unanimously.

(5)
Minutes
Adopted For
December 02,
2002

Chairman Bledsoe requested the December 02, 2002 County Commission Meeting minutes be approved and accepted.

A motion was made by Commissioner Maples with a second by Commissioner Shaver to adopt minutes as presented.

Upon voice vote the motion **Passed** unanimously.

(6)
Audience
Comments On
Agenda Items

Chairman Maples asked for any visitor wishing to address the commission regarding items on the planned agenda to come forward.

Attorney Terry Vann came forward to speak on behalf of his clients, Mr. And Mrs. Bill Matlock, in favor of item 6C5, "*Request approval of road name change from Brooks Lane to Brooksvew Road. Located in the Newberry Subdivision, in the 6th Legislative District, referenced by Tax Map 31-H, Group C, adjacent to Parcels 12.00, 13.00, 14.00 and 15.00*".

Ms. Pat Hunter, Loudon County resident, came forward to speak in opposition of item 6E1, "*Consideration of adopting Letter of Agreement by and between the County Clerk, County Executive and County Commission regarding County Executive's Assistant to act as Clerk for County Commission meetings*" and requested her comments be made part of the minutes.

Exhibit A

Executive Miller responded to statements made by Ms. Hunter clarifying that the Letter of Agreement was not requested by the County Executive, and this has been the county's procedure for over seven years. Executive Miller requested discussion and possible action on the following items:

(7)
Animal
Control
Appointment
Approved

1. Consideration of adopting a resolution appointing or acknowledging board or committee appointment by the County Executive to the Loudon County Animal Control Authority, 7th District.

A motion was made by Commissioner Shaver with a second by Commissioner Franke to adopt this resolution.

Upon voice vote the motion **Passed** unanimously.

Resolution 010603-B

(8)
Health Dept.
ARC Update

2. Executive Miller stated that he had contacted Congressman Duncan's office and the Legislators regarding the ARC grant for the Health Department, but has not heard further information.

(9)
Building
Commission
Report

Mr. Leo Bradshaw, Loudon County Building Commissioner, gave the monthly Building Commission report.

Permits issued:	20
Fees:	\$ 2,083.00
Estimated value:	\$ 2,066,697.00

Mr. Russ Newman, Office of Planning and Community Development, requested discussion and possible action on the following items:

(10)
Browder Farm
Rezoning
Approved

1. Request rezoning of property located off Highway 11 West, known as the Browder Farm, at Huntsville Road, Highland Avenue and Riverview Roads, consisting of approximately 276 acres, referenced by Tax Map 29, a portion of Parcel 98.00, located in the 5th Legislative District, from M-1, General Industrial District, to R-1, Suburban Residential District. Owner: John Montgomery [0211-270-RZ-CO(LEPR)]

A motion was made by Commissioner Duff with a second by Commissioner Shaver to adopt this resolution.

Upon voice vote the motion **Passed** unanimously.

Resolution 010603-C

(11)
Hall
Road/Highway
11 Rezoning
Approved

2. Request rezoning of property located at 800 Hall Street and Highway 11 East, referenced by Tax Map 23B, Group F, Parcel 12.00, located in the 2nd Legislative District, from R-1, Suburban Residential District, to C-2, General Commercial District. Agent: Teresa King [02-11-279-RZ-CO(LEPR)]

A **motion** was made by **Commissioner Jenkins** with a second by **Commissioner Marcus** to adopt this resolution.

Upon voice vote the motion **Passed** unanimously.

Resolution 010603-D

(12)
Unitia Road
Rezoning
Failed (Due To
Lack Of 2/3
Vote)

3. Request rezoning of property located at 4950 Unitia Road, referenced by Tax Map 47, Parcel 1.02, located in the 3rd Legislative District, consisting of approximately 10 acres, from A-1, Agricultural-Forestry District, to R-1, Suburban Residential District. Owner: Gwen Hargis, Agent: Mike Roach [02-11-294-RZ-CO]

After much discussion, a **motion** was made by **Commissioner Franke** with a second by **Commissioner Shaver** to deny this request.

Upon roll call vote the following commissioners voted **Aye: Meers, Maples, Franke, Bledsoe, and Shaver: (5).**

The following commissioners voted **Nay: Marcus, Jenkins, Duff and Harold: (4).**

The following commissioners were **Absent: Miller: (1).**

Thereupon the chairman announced the motion **Failed (due to lack of 2/3 vote): (5-4-1).**

Resolution 010603-E

(13)
Beals Chapel
Road Rezoning
Approved

4. Request rezoning of property located at 19100 Beals Chapel Road from A-2, Rural Residential District, to R-1, Suburban Residential District, consisting of approximately 35 acres, referenced by Tax Map 31, Parcel 36.00, 6th Legislative District. Owner: Daisy Warren, Agent: Ed Loy [02-11-278-RZ-CO]

A **motion** was made by **Commissioner Harold** with a second by **Commissioner Meers** to adopt this resolution.

Upon roll call vote the following commissioners voted **Aye: Marcus, Meers, Jenkins, Maples, Franke, Bledsoe, Duff, Shaver, and Harold: (9).**

The following commissioners voted **Nay: (0).**

The following commissioners were **Absent: Miller: (1).**

Thereupon the chairman announced the motion **Passed: (9-0-1).**

Resolution 010603-F

(14)
Brooksvew
Road To Stay
Brooksvew
Road

5. Request approval of road name change from Brooks Lane to Brooksvew Road. Located in the Newberry Subdivision, in the 3rd Legislative District, referenced by Tax Map 31-H, Group C, adjacent to Parcels 12.00, 13.00, 14.00 and 15.00

A **motion** was made by **Commissioner Franke** with a second by **Commissioner Maples** to keep name as Brooksvew Road.

Upon roll call vote the following commissioners voted **Aye: Marcus, Meers, Jenkins, Maples, Franke, Bledsoe, Duff, Shaver, and Harold: (9).**

The following commissioners voted **Nay: (0).**

The following commissioners were **Absent: Miller: (1).**

Thereupon the chairman announced the motion **Passed: (9-0-1).**

(15)
Highway 70
Illegal
Dumping
Addressed

Commissioner Shaver requested information regarding the illegal dumping on Highway 70. Planner Russ Newman responded that he and/or the Building Commissioner's office would continue monitoring the situation.

Mrs. Nancy Richesin, Director of Budgets and Accounts, requested discussion and possible action on following items:

(16)
Special Called
Meeting
Scheduled

1. Consideration of holding a Special Called meeting on Monday, January 27, 6:00 pm at the Loudon County Courthouse Annex to consider adopting a resolution authorizing borrowing \$5 million for general capital improvements.

A **motion** was made by **Commissioner Franke** with a second by **Commissioner Marcus** to approve this request.

Upon voice vote the motion **Passed** unanimously.

(17)
Financial
Report
Distributed

Mrs. Richesin distributed the November monthly financial statement.

(18)
County
Clerk/County
Executive/
County
Commission
Agreement
Approved

Commissioner Franke requested consideration of adopting a Letter of Agreement by and between the County Clerk, County Executive and County Commission regarding County Executive's Assistant to act as Clerk for the County Commission meetings.

A motion was made by Commissioner Franke with a second by Commissioner Harold to adopt this resolution.

Upon roll call vote the following commissioners voted Aye: Marcus, Meers, Jenkins, Maples, Franke, Bledsoe, Duff, Shaver, and Harold: (9).

The following commissioners voted Nay: (0).

The following commissioners were Absent: Miller: (1).

Thereupon the chairman announced the motion Passed: (9-0-1).

Resolution 010603-G

(19)
Road List 2003
Approved

Road Superintendent Don Palmer requested approval of the 2003 County Road List.

A motion was made by Commissioner Harold with a second by Commissioner Maples to adopt the 2003 County Road List.

Upon voice vote the motion Passed unanimously.

Exhibit H

(20)
Notaries
Approved

Angie Chambers, County Executive's Assistant, requested consideration of approving the following Notary Applications:

James H. Simpson

Janet L. Simpson

Lisa A. Sartin

Brenda A. Crisp

Jarrell T. Lusby

Deloris Thomas

Mary Ellen Hibbard

Charlotte Lawson

Carla J. Wiggins

A motion was made by Commissioner Shaver with a second by Commissioner Duff to approve these notary requests.

Upon voice vote the motion Passed unanimously.

(21)
Audience
Comments on
Non-Agenda
Items

Chairman Bledsoe asked for any visitor wishing to address the commission regarding items not on the planned agenda to come forward.

No one came forward to speak.

(22)
Adjournment

There being no further business, a motion being duly made and seconded, the January 06, 2003 meeting stood adjourned at 7:37 p.m.


CHAIRMAN

ATTEST:


COUNTY COURT CLERK


COUNTY EXECUTIVE

Exhibit A

I would like to go on record in opposition of the Memorandum of Understanding Agreement between the County Clerk, County Executive and Loudon County Commission and I, am requesting commission to vote NO with regard to this matter.

According to the Loudon County Procedural Rules, "Record-keeping is one of the most important duties of the County Clerk." Yet, Loudon County Commission is considering transferring this important duty to the County Executive's office and his administrative assistant. If the State Legislature had seen fit to delegate these duties to the County Executive, there would be no reason to elect a County Clerk or any other office holder. It's called a segregation of power. What if the County Executive decides he can do commission's job better, do we then abolish county commission?

The voters elected Mr. Wampler to serve and perform his duties as County Clerk in accordance to state statutes. As you may recall, Mr. Wampler filed a lawsuit a number of years ago to increase the number of personnel in his office. The office of the County Clerk is well funded and well staffed with both full-time and part-time employees. The County Clerk is well compensated by the taxpayers and in my opinion; he needs to perform the duties, which he was elected to do. I am requesting that this be entered into the Minutes of this meeting.

Pat Hunter
5th District

LOUDON COUNTY COMMISSION

RESOLUTION NO. 010603 - B

**RESOLUTION APPROVING OR ACKNOWLEDGING BOARD OR
COMMITTEE APPOINTMENTS BY COUNTY EXECUTIVE**

WHEREAS, by statute and/or intergovernmental agreement and/or County Procedural Regulations, the County Executive has authority to make certain committee and board appointments; and

WHEREAS, an appointment is necessary and/or desirable at this time; and

WHEREAS, the County Executive appoints the following as a member of the

**LOUDON COUNTY ANIMAL
CONTROL AUTHORITY**

Appointee

Expires

Panel B

Lee Alber

June 30, 2006

NOW, THEREFORE, BE IT RESOLVED that the Loudon County Commission in regular session assembled this 6th day of January, 2003 hereby approves and acknowledges (as appropriate), the said appointment(s).


COUNTY CHAIRMAN

ATTEST:

COUNTY CLERK


COUNTY EXECUTIVE

The remaining members and their continuing expiration terms for said board or committee are as follows:

Panel A

Thomas Hebble	(Philadelphia)	June 30, 2005
Nancy James	(City of Loudon)	June 30, 2005
Sharon Buxkemper	(Citizen At Large)	June 30, 2005

Panel B

Com. Van Shaver	(County Commission Appt.)	June 30, 2006
Dr. Barry Gordon	(Loudon County Vet. Assoc.)	June 30, 2006
Cindy McDaniel	(City of Lenoir City)	June 30, 2006

Panel C

Miracle Nichols	(Citizen At Large)	June 30, 2003
Ed Loy	(Loudon County Human Soc.)	June 30, 2003
	(Shelter Employee)	No Expiration

RESOLUTION 010603-C

A RESOLUTION AMENDING THE ZONING MAP OF LOUDON COUNTY, TENNESSEE, PURSUANT TO CHAPTER FOUR, §13-7-105 OF THE TENNESSEE CODE ANNOTATED, TO REZONE PROPERTY LOCATED OFF HIGHWAY 11 WEST, REFERENCED BY TAX MAP 29. A PORTION OF PARCEL 98.00, LOCATED IN THE SECOND LEGISLATIVE DISTRICT, FROM M-1, GENERAL INDUSTRIAL DISTRICT, TO R-1, SUBURBAN RESIDENTIAL DISTRICT.

WHEREAS, the Loudon County Commission, in accordance with Chapter Four, §13-7-105 of the Tennessee Code Annotated, may from time to time, amend the number, shape, boundary, area or any regulation of or within any district or districts, or any other provision of any zoning resolution, and

WHEREAS, the Regional Planning Commissions have forwarded their recommendations regarding the amendment to the Zoning Map of Loudon County, Tennessee.

WHEREAS, a notice of public hearing and a description of the resolution appeared in the Loudon County News Herald on November 25, 2002, consistent with the provisions of Tennessee Code Annotated, §13-7-105,

NOW, THEREFORE, BE IT RESOLVED by the Loudon County Commission that the Zoning Map of Loudon County, Tennessee be amended as follows:

1. That property located off Highway 11 West, referenced by Tax Map 29, a portion of Parcel 98.00, located in the Second Legislative District, be rezoned from M-1, General Industrial District, to R-1, Suburban Residential District, as represented on the attached map; said map being part of this Resolution.

BE IT FINALLY RESOLVED, that this Resolution shall take effect immediately, the public welfare requiring it.

ATTEST

APPROVED: LOUDON COUNTY EXECUTIVE

LOUDON COUNTY CHAIRMAN

DATE: _____

The vote on the question of approval of this Resolution by the Planning Commissions is as follows:

APPROVED: 9

APPROVED: 7

DISAPPROVED: 0

DISAPPROVED: 0

ATTEST: SECRETARY, LOUDON COUNTY
REGIONAL PLANNING COMMISSION

Dated: December 17, 2002

ATTEST: SECRETARY, LENOIR CITY
REGIONAL PLANNING COMMISSION

Dated: December 3, 2002

FILE #02-11-270-RZ-CO(LEPR)

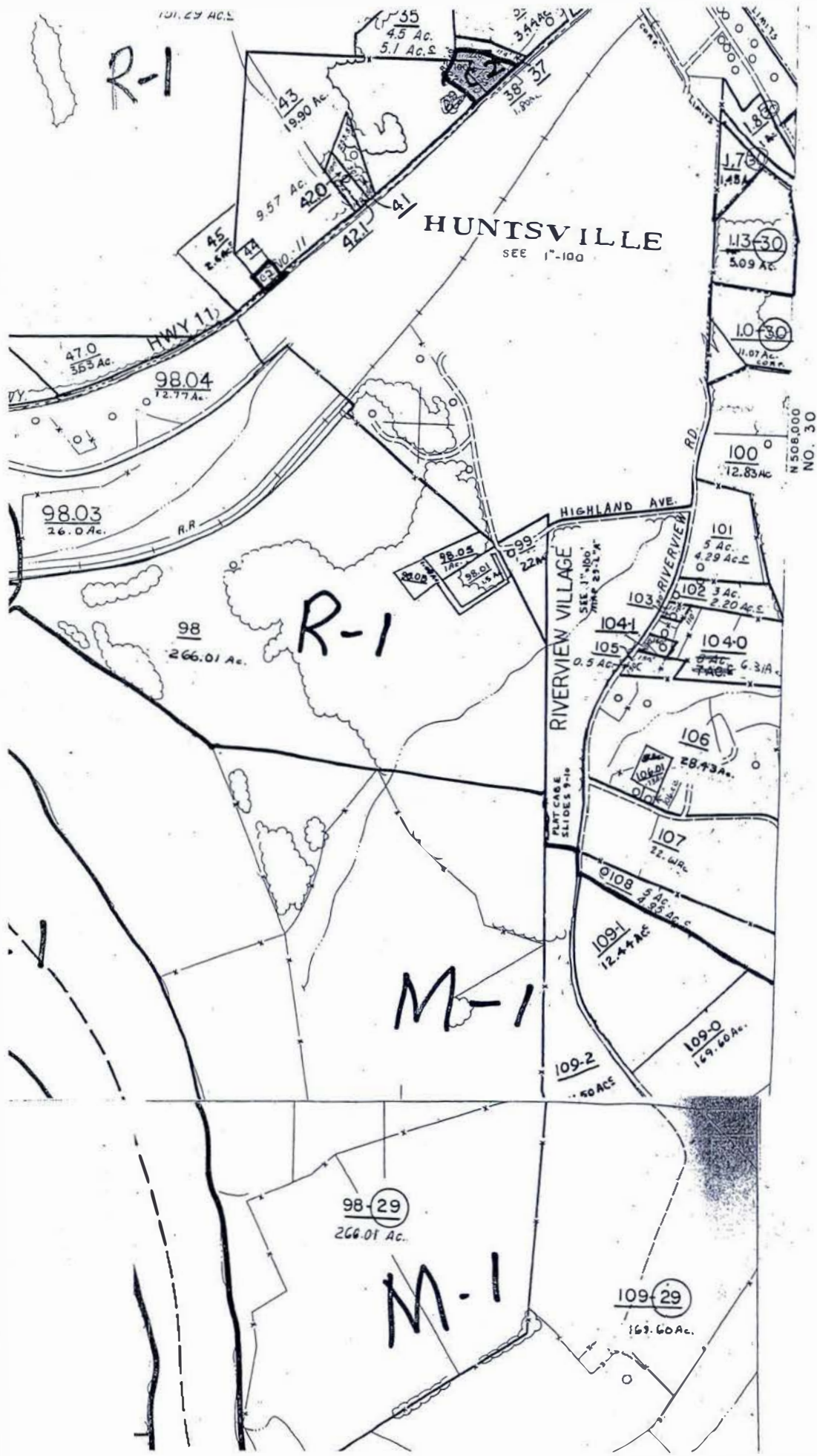
R-1

HUNTSVILLE
SEE 1"-100

R-1

M-1

M-1



RESOLUTION 010603-D

A RESOLUTION AMENDING THE ZONING MAP OF LOUDON COUNTY, TENNESSEE, PURSUANT TO §13-7-105 OF THE TENNESSEE CODE ANNOTATED, TO REZONE PROPERTY LOCATED AT 800 HALL STREET, SITUATED IN THE SECOND LEGISLATIVE DISTRICT, REFERENCED BY TAX MAP 23B, GROUP F, PARCEL 12.00, FROM DISTRICT R-1, SUBURBAN RESIDENTIAL DISTRICT, TO C-2, GENERAL COMMERCIAL DISTRICT.

WHEREAS, the Loudon County Commission, in accordance with §13-7-105 of the Tennessee Code Annotated, may from time to time, amend the number, shape, boundary, area or any regulation of or within any district or districts, or any other provision of any zoning resolution, and

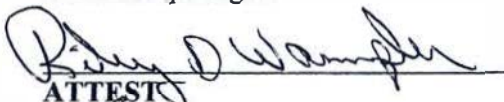
WHEREAS, the Regional Planning Commissions have forwarded their recommendation regarding the amendment to the Zoning Map of Loudon County, Tennessee,

WHEREAS, a notice of public hearing and a description of the resolution appeared in the Loudon County News Herald on November 11, 2002, consistent with the provisions of Tennessee Code Annotated, §13-7-105,

NOW, THEREFORE, BE IT RESOLVED by the Loudon County Commission that the Zoning Map of Loudon County, Tennessee be amended as follows:

1. That property located at 800 Hall Street, situated in the Second Legislative District, referenced by Tax Map 23B, Group F, Parcel 12.00, be rezoned from R-1, Suburban Residential District, to C-2, General Commercial District, as represented on the attached map; said map being part of this Resolution.

BE IT FINALLY RESOLVED, that this Resolution shall take effect immediately, the public welfare requiring it.



ATTEST


APPROVED: LOUDON COUNTY EXECUTIVE



LOUDON COUNTY CHAIRMAN
DATE: _____

The vote on the question of approval of this Resolution by the Planning Commissions is as follows:

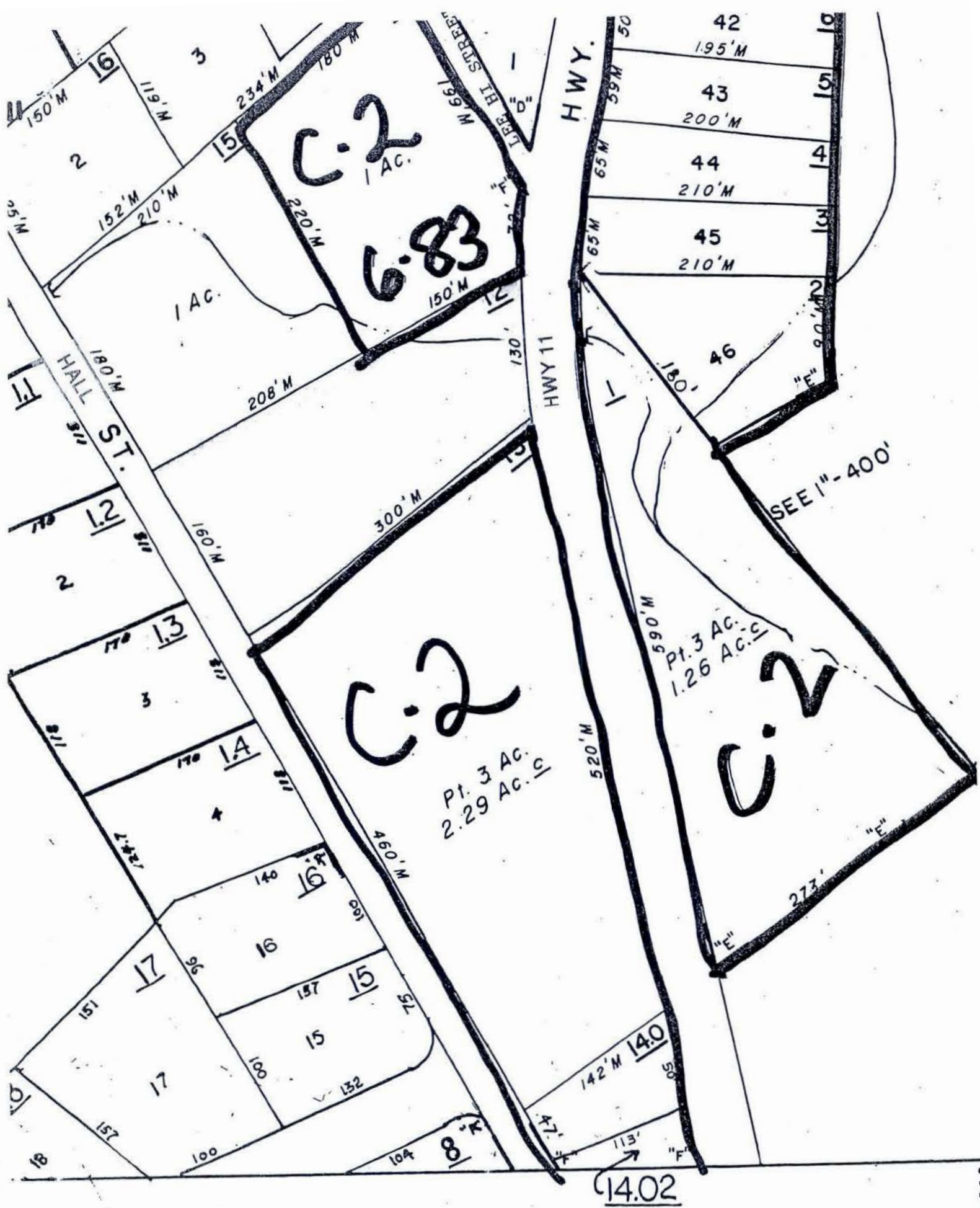
APPROVED: 9
DISAPPROVED: 0


ATTEST: SECRETARY, LOUDON COUNTY
REGIONAL PLANNING
COMMISSION
Dated: December 17, 2002

APPROVED: 7
DISAPPROVED: 0


ATTEST: SECRETARY, LENOIR CITY
REGIONAL PLANNING
COMMISSION
Dated: December 3, 2002

FILE #02-11-279-RZ-CO(LEPR)



RESOLUTION 010603-E

A RESOLUTION AMENDING THE ZONING MAP OF LOUDON COUNTY, TENNESSEE, PURSUANT TO CHAPTER FOUR, §13-7-105 OF THE TENNESSEE CODE ANNOTATED, TO REZONE PROPERTY AT 4950 UNITIA ROAD, LOCATED IN THE THIRD LEGISLATIVE DISTRICT, REFERENCED BY TAX MAP 47, PARCEL 1.02, FROM A-1, AGRICULTURE-FORESTRY DISTRICT, TO R-1, SUBURBAN RESIDENTIAL DISTRICT.

WHEREAS, the Loudon County Commission, in accordance with Chapter Four, §13-7-105 of the Tennessee Code Annotated, may from time to time, amend the number, shape, boundary, area or any regulation of or within any district or districts, or any other provision of any zoning resolution; and

WHEREAS, the Loudon County Regional Planning Commission forwarded its recommendation regarding the amendment to the Zoning Map of Loudon County, Tennessee; and

WHEREAS, a notice of public hearing and a description of the resolution appeared in the Loudon County News Herald on December 5, 2002, consistent with the provisions of Tennessee Code Annotated, Section 13-7-105,

NOW, THEREFORE, BE IT RESOLVED by the Loudon County Commission that the Zoning Map of Loudon County, Tennessee be amended as follows:

1. That property at 4950 Unitia Road, located in the Third Legislative District, referenced by Tax Map 47, Parcel 1.02, be rezoned from A-1, Agriculture-Forestry District, to R-1, Suburban Residential District, as represented on the attached map; said map being part of this Resolution.

BE IT FINALLY RESOLVED, that this Resolution shall take effect immediately, the public welfare requiring it.

ATTEST

LOUDON COUNTY CHAIRMAN
DATE: _____

APPROVED: LOUDON COUNTY EXECUTIVE

The vote on the question of approval of this Resolution by the Planning Commission is as follows:

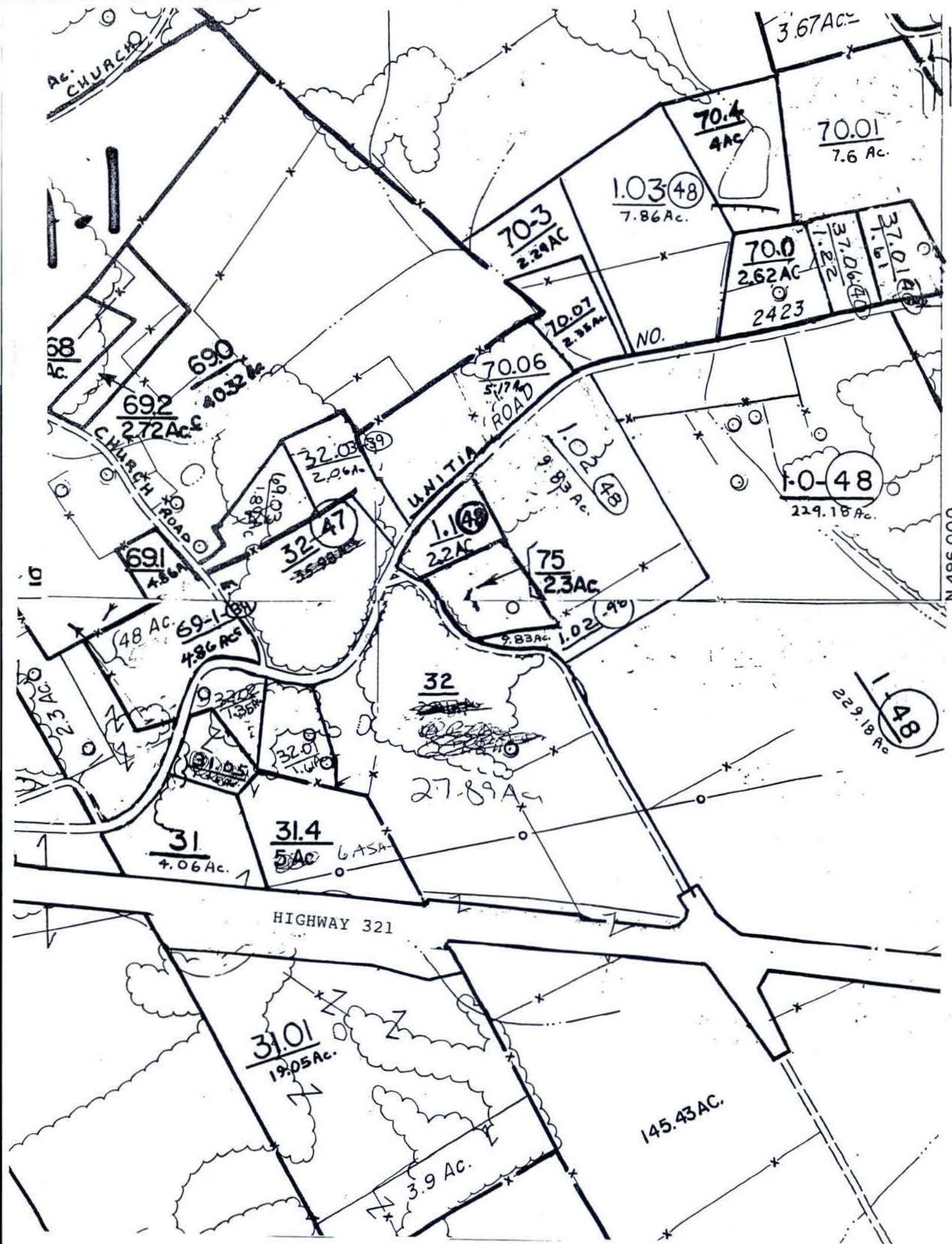
APPROVED: 9

DISAPPROVED: 0

ATTEST: SECRETARY, LOUDON COUNTY
REGIONAL PLANNING COMMISSION
Dated: December 17, 2002

FILE #02-11-294-RZ-CO

DENIED



RESOLUTION 010603-F

A RESOLUTION AMENDING THE ZONING MAP OF LOUDON COUNTY, TENNESSEE, PURSUANT TO CHAPTER FOUR, §13-7-105 OF THE TENNESSEE CODE ANNOTATED, TO REZONE A 31.46 ACRE PORTION OF PROPERTY LOCATED AT 19100 BEALS CHAPEL ROAD, SITUATED IN THE SIXTH LEGISLATIVE DISTRICT, REFERENCED BY TAX MAP 31, PART OF PARCEL 36.00, FROM A-2, RURAL RESIDENTIAL DISTRICT, TO R-1, SUBURBAN RESIDENTIAL DISTRICT.

WHEREAS, the Loudon County Commission, in accordance with Chapter Four, §13-7-105 of the Tennessee Code Annotated, may from time to time, amend the number, shape, boundary, area or any regulation of or within any district or districts, or any other provision of any zoning resolution, and

WHEREAS, the Regional Planning Commission has forwarded a recommendation regarding the amendment to the Zoning Map of Loudon County, Tennessee,


WHEREAS, a notice of public hearing and a description of the resolution appeared in the Loudon County News Herald on November 14, 2002, consistent with the provisions of Tennessee Code Annotated, §13-7-105,

NOW, THEREFORE, BE IT RESOLVED by the Loudon County Commission that the Zoning Map of Loudon County, Tennessee be amended as follows:

1. That a 31.46 acre portion of property located at 19100 Beals Chapel Road, situated in the Sixth Legislative District, referenced by Tax Map 31, Part of Parcel 36.00, be rezoned from A-2, Rural Residential District, to R-1, Rural Residential District, as represented on the attached map; said map being part of this Resolution.

BE IT FINALLY RESOLVED, that this Resolution shall take effect immediately, the public welfare requiring it.


ATTEST


LOUDON COUNTY CHAIRMAN
DATE: _____


APPROVED: LOUDON COUNTY EXECUTIVE

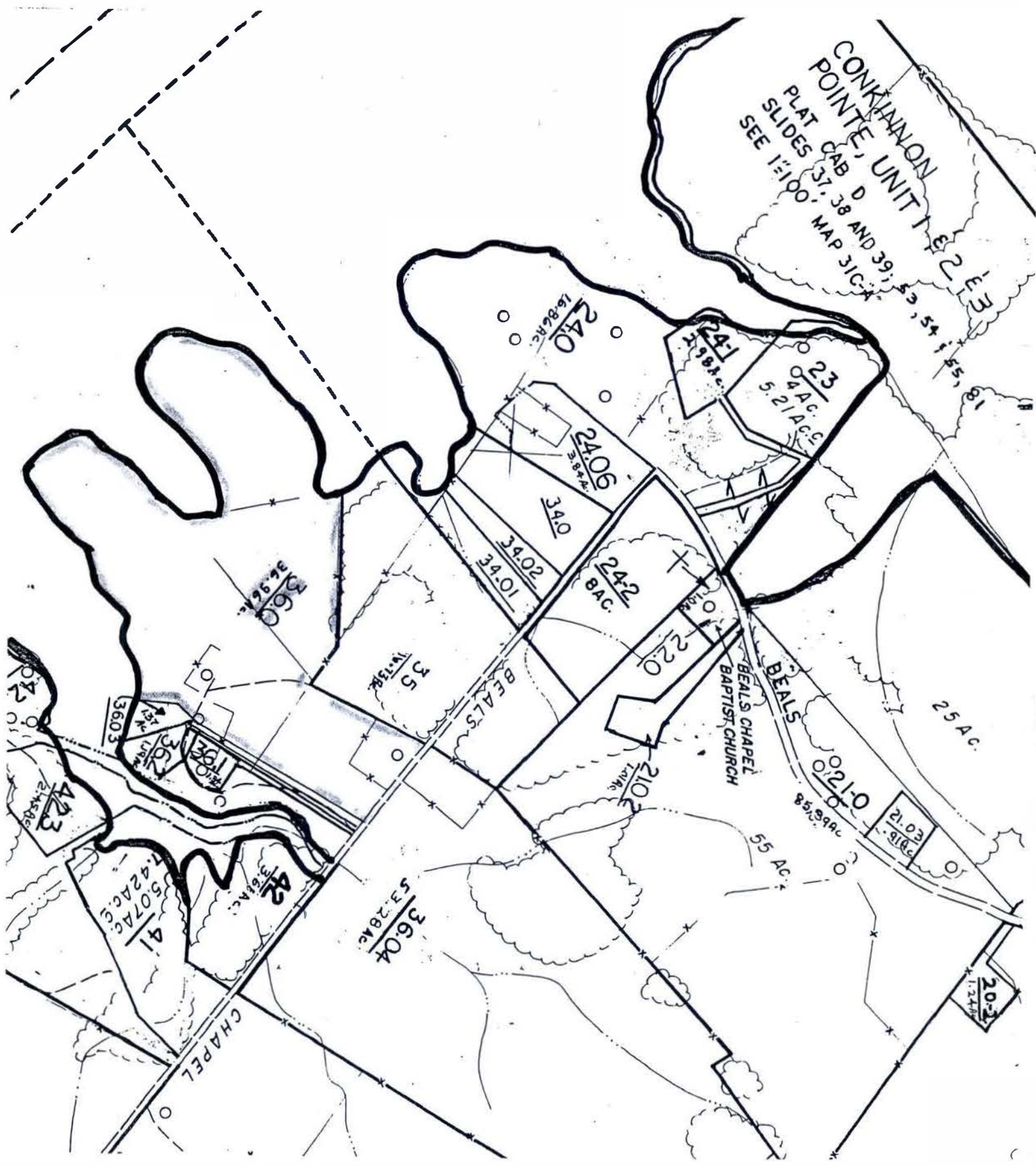
The vote on the question of approval of this Resolution by the Planning Commission is as follows:

APPROVED: 7

DISAPPROVED: 0


ATTEST: SECRETARY, LOUDON COUNTY
REGIONAL PLANNING COMMISSION
Dated: November 19, 2002

FILE #02-11-278-RZ-CO



RESOLUTION 010603-G

MEMORANDUM OF UNDERSTANDING AND AGREEMENT BETWEEN COUNTY CLERK, COUNTY EXECUTIVE, AND COUNTY COMMISSION

This Agreement, made between RILEY D. WAMPLER, County Clerk of Loudon County, Tennessee, the LOUDON COUNTY LEGISLATIVE BODY, and the COUNTY EXECUTIVE of Loudon County, Tennessee, on this the ____ day of ____, 2003.

PREAMBLE

The County Clerk of Loudon County serves as the clerk of the county legislative body by virtue of private acts of the State of Tennessee of 1974, and accordingly has the responsibility to handle all the duties as prescribed in T.C.A. §18-6-104, as well as Chapters 1 and 2 of Title 18. It is agreed by the parties to this instrument that it is for the best benefit and coordination between the parties in reference to all meetings of the county legislative body, and the meetings of its ad hoc and special committees as necessary, that the Administrative Assistant to the County Executive be authorized to act as Clerk and Recorder for the meetings, and be responsible for, and authorized to perform, all the usual duties of the County Clerk for County Commission meeting responsibilities only, and this agreement is for the purpose of a formalized, signed understanding.

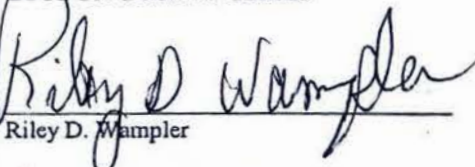
WHEREFORE, PREMISES CONSIDERED, it is agreed between the parties as follows:

1. The County Clerk will deputize the County Executive Administrative Assistant with authority to act as any other deputy clerk, but limited to duties in acting as clerk for County Commission meetings as otherwise described herein, to be subject to the final authority of the County Clerk, acting for the County Clerk in keeping records of the meeting, calling roll, and keeping attendance records, and preparing the minutes for final approval and recording by the Clerk in the appropriate books of the County Clerk.
2. All certifications shall remain the responsibility of the County Clerk, and the filing and indexing of all minutes and records will remain the responsibility of the County Clerk and other deputies located physically in his offices at the Courthouse Annex.
3. The compensation and supervision of the administrative assistant shall remain with the County Executive in all matters, with the exception that the County Clerk shall have administrative supervision of all matters concerning acting as a deputy clerk as provided in this

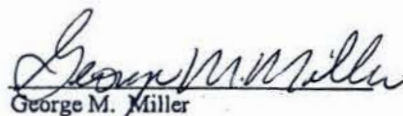
agreement. The County Executive Administrative Assistant shall have the authority to work with the county legislative body Chairman and the County Executive in preparing agendas and other meeting related duties.

4. This mutual agreement shall remain in effect so long as the agreement is mutual. A decision to withdraw from the agreement by the County Executive or by the county legislative body shall be after notifying the other parties to the agreement in writing at least forty-five (45) days in advance. The County Clerk may terminate the agreement at any time by giving written notice to the other parties.

LOUDON COUNTY CLERK


Riley D. Wampler

LOUDON COUNTY EXECUTIVE


George M. Miller

LOUDON COUNTY COMMISSION

BY: 
Its: Chairman

LOUDON COUNTY ROAD LIST

JANUARY 06, 2003

EXHIBIT H

ADOPTED RESOLUTION 81000
LONDON COUNTY ROAD LIST
01-06-03
DOX PALMER,
ROAD SUPERINTENDENT

CLASS 1 34" 100"
CLASS 2 30" 100"
CLASS 3 34" 100"
CLASS 4 40" 100"

LOUDON COUNTY ROAD LIST
ROAD NAME

A

	LENGTH MILES	COUNTY OR STATE AID	CLASS AND WIDTH	ROAD BED WIDTH	RIGHT OF WAY WIDTH	CURBED SUBDIV DEAD END
ADKINS ROAD	0.2	CO.				
ALLEN ROAD	0.2	CO.	3-18'	18'		DE
ALLEN SHORE DRIVE	0.5	CO.				
ALLISON TOWN ROAD	0.8	CO.				
ALPINE DRIVE	0.1	CO.				
ANGLEWOOD DRIVE	0.2	CO.	3-23'	CURB-DE
ANTIOCH CHURCH ROAD E	2.7	SA				
ANTIOCH CHURCH ROAD W	2.4	CO.				
APPLEBY ROAD	0.2	CO.				
AVERY CIRCLE	0.7	CO.	3-26'	CURB
AVERY STREET	0.2	CO.	3-28'	CURB
AXLEY CHAPEL ROAD	2.2	CO.				

B

BAILEYS ROAD	0.2	CO.				
BARCLAYS COURT	0.1	CO.				CURB-DE
BARGER ROAD	0.1	CO.	3-15'	18'		DE
BARKMOOR DRIVE	0.3	CO.				DE
BARR ROAD	0.3	CO.				
BARRIER DRIVE	0.2	CO.				
BAT CREEK ROAD	1.1	CO.				
BAT CREEK ROAD E	1.3	CO.				
BAXTER BRIGHT ROAD	0.4	CO.				

PAGE 1 OF 36

LOUDON COUNTY ROAD LIST
01-06-03

ROAD NAME	LENGTH	COUNTY	CLASS	ROAD BED	RIGHT	CURBED
B	MILES	OR	AND	WIDTH	OF WAY	SUBDIV
		STATE AID	WIDTH		WIDTH	DEAD END
BEALS CHAPEL ROAD	2.8	CO.	3-18'			DE
BEALS CHAPEL ROAD	2.8	SA	3-21'	22'	
BEELEER LOOP ROAD	0.4	CO.				
BELL ROAD N	0.8	CO.				
BELL ROAD S	0.8	CO.				
BELL VIEW ROAD	0.7	CO.				
BENJAMIN DRIVE	0.2	CO.				
BIG HILL ROAD	1.9	CO.				
BIG SANDY ROAD	8.1	CO.				
BILL SMITH ROAD	0.4	CO.				
BIRD ROAD	1.2	SA				
BISHOP ROAD	1.1	CO.				
BLACK ROAD	1	CO.				
BLACKBERRY RIDGE DRIVE	0.7	CO.	3-28'	CURB-DE
BLAIR ROAD		CO.				
BLUE HERRON DRIVE	0.1	CO.	3-24'	CURB-DE
BLUE SPRINGS ROAD	3.8	SA				
BLUE TICK LANE	0.4	CO.				DE

PAGE 2 OF 36

LOUDON COUNTY ROAD LIST
01-08-03

ROAD NAME	LENGTH	COUNTY	CLASS	ROAD BED	RIGHT OF	CURBED
B	MILES	OR	AND	WIDTH	WAY	SUBDIV
		STATE AID	WIDTH		WIDTH	DEAD END
BONA VISTA LANE	0.1	CO.				
BRADSHAW HOLLOW ROAD	0.8	CO.				
BRANCH ROAD	1.1	CO.				
BRANDON DRIVE	0.1	CO.	3-16'	16'
BRANDYMWNE DRIVE	1.1	CO.				
BRANNON ROAD	0.1	CO.				
BREAZEAL ROAD	1.9	CO.				
BRENTWOOD PLACE ROAD	0.1	CO.	3-26'
BREWSTER ROAD	0.1	CO.				
BRIGHT ROAD	2.2	CO.				
BROOK ROAD	1.6	CO.				
BROOKVIEW ROAD	0.8	CO.				
BROWDER HOLLOW ROAD	1.6	CO.				
BROWDER SCHOOL ROAD	0.2	CO.				
BURL ANDERSON ROAD	0.2	CO.				
BURNETTE CIRCLE	0.4	CO.				
BUSTER BLVD	0.1	CO.	4-12'	16'		DE
BUTTERMILK ROAD	5.1	SA				
BUTTERMILK ROAD W	0.5	CO.				

LOUDON COUNTY ROAD LIST
01-08-03

ROAD NAME	LENGHT MILES	COUNTY OR STATE AID	CLASS AND WIDTH	ROAD BED WIDTH	RIGHT OF WAY WIDTH	CURBED SUBDIV DEAD END
C						
C & C ROAD	0.2	CO.				DE
CABE ROAD	0.5	CO.				
CALDWELL ROAD	1.3	CO.				
CALLOWAY CIRCLE	0.8	CO.	3-28'	CURB
CALLOWAY DRIVE	0.5	CO.	3-28'	CURBED
CALLOWAY ROAD	2.8	CO.				
CAMERON LANE	0.1	CO.	3-22'	CURB-DE
CARDINAL VIEW COURT	0.1	CO.				CURB-DE
CARDWELL CHAPEL ROAD	1.5	CO.				
CARPENTER LOOP	1.1	CO.				
CARTER DRIVE	0.2	CO.				
CARTER ROAD	0.4	CO.				
CARTER'S CHAPEL ROAD	1.3	SA				
CASEY LANE	0.1	CO.	3-22'	CURB-DE
CATTLEMAN'S DRIVE	0.2	CO.	3-25'	CURB-DE
CECIL WEBB ROAD	0.5	CO.				
CEDAR CIRCLE	0.8	CO.	3-25'	CURBED
CEDAR PARK DRIVE	0.2	CO.	4-18'	18'		DE
CEMETERY ROAD	0.4	CO.				
CHELSEA CIRCLE	0.1	CO.	CURB-DE

PAGE 4 OF 36

LOUDON COUNTY ROAD LIST
01-06-03

ROAD NAME	LENGTH	COUNTY	CLASS	ROAD BED	RIGHT OF	CURBED
C	MILES	OR	AND	WIDTH	WAY	SUBDIV
		STATE	AD	WIDTH	WIDTH	DEAD END
CHIU LANE	0.1	CO.				
CHRISMAN ROAD	0.2	CO.				
CIRCLE DRIVE	0.4	CO.				
CLARKE ROAD	0.4	CO.				
CLAY HOLLOW ROAD	1.1	CO.				
CLEAR BRANCH ROAD N	0.5	CO.				
CLEAR BRANCH ROAD S	0.3	CO.				
CLEAR COVE COURT	0.1	CO.	3-24'	CURB-DE
CUNCHMEW DRIVE	0.1	CO.				
CLOYD'S CREEK RO. 4D	0.2	CO.				
CLUB DRIVE	0.4	CO.				CURBED
COLUMBUS DRIVE	1.2	CO.				CURBED
CONKINNON DRIVE	1.3	CO.	3-24'	CURBED
CONMASTER ROAD	0.3	CO.				
COOK DRIVE	0.3	CO.				
COPE ROAD	0.2	CO.				
CORDOVA LANE	0.1	CO.				CURBED
CORINTH CHURCH ROAD	1.5	CO.				
CORINTH ROAD	1.4	CO.				
CORNETT ROAD	0.4	CO.				

PAGE 5 OF 36

LOUDON COUNTY ROAD LIST
01-08-03

ROAD NAME	LENGTH	COUNTY	CLASS	ROAD BED	RIGHT OF	CURBED
C	MILES	OR	AND	WIDTH	WAY	SUBDIV
		STATE AID	WIDTH		WIDTH	DEAD END
COSTNER ROAD	0.2	CO.				
COULTER SHOALS CIRCLE	0.7	CO.	3-19'
COVENANT CIRCLE	0.4	CO.	3-24'	CURBED
COVE VIEW LANE	0.1	CO.	3-23'	CURB-DE
COX ROAD	0.2	CO.				
COYTEE ROAD	1.3	CO.				
CRANFIELD LANE	0.1	CO.	3-16'	18'		DE
CREEKWOOD COURT	0.1	CO.	3-24'	CURB-DE
CRESCENT DRIVE	0.2	CO.				
CRESS LANE	0.3	CO.	3-17'	19'		DE
CRESTVIEW CIRCLE	0.6	CO.	3-26'	CURB
CRESTVIEW DRIVE	0.1	CO.	3-18'		
CROCK ROAD	0.9	CO.				
CRUZE ROAD	0.9	CO.				DE
CUDDIE LANE	0.1	CO.				
CUSICK CIRCLE	0.6	CO.	3-19'	21'	
CUSICK LANE	0.1	CO.	3-19'	21'		DE
D						
DAILEY AVE	1.1	CO.				
DAIRY LANE	0.3	CO.	3-26'	CURB
DAMS DAIRY ROAD	0.3	CO.				
DAMS DRIVE	0.3	CO.	3-15'	16'		DE
DAMS FERRY ROAD	2.8	SA				

PAGE 6 OF 36

LOUDON COUNTY ROAD LIST
01-08-03

ROAD NAME	LENGTH	COUNTY	CLASS	ROAD BED	RIGHT	CURBED
D	MILES	OR	AND	WIDTH	OF WAY	SUBDIV
		STATE AID	WIDTH		WIDTH	DEAD END
DAVIS RIDGE ROAD	0.4	CO.				
DAVIS LANE	0.9	CO.				DE
DAWSON ROAD	0.8	CO.				
DEADEND ROAD	0.5	CO.				
DEATON ROAD	0.3	CO.	3-13'			DE
DEERFIELD COURT	0.1	CO.				CURB-DE
DEWITT DRIVE	0.4	CO.	3-15'	18'	DE
DIXIE LEE CIRCLE	0.7	CO.				
DIXIE LEE LANE	0.1	CO.				DE
DIXON ROAD	0.7	CO.	3-22'	22'	
DOGWOOD LANE	0.1	CO.	4-18'	20'		DE
DOGWOOD LANE E	0.1	CO.	3-24'	CURB-DE
DONNA DRIVE	0.4	CO.				
DONALDSON LIGHT LANE	0.2	CO.				DE
DOTSON HILL ROAD	0.3	CO.				
DOTSON ROAD	0.3	CO.				
DOWNING COURT	0.1	CO.				CURB-DE
DRIFTWOOD COURT	0.1	CO.	3-24'	CURB-DE
DRY BRANCH ROAD	0.3	CO.				
DRY RIDGE ROAD	1.7	CO.				
DRY VALLEY ROAD	2.4	SA				
DUGGAN ROAD	0.1	CO.				DE
DUNCAN ROAD	0.6	CO.	4-13'	13'	
DUNRIDGE LANE	0.1	CO.	3-26'	CURB-DE
DUNSMORE ROAD	0.3	CO.				
DUTTON ROAD	1.1	CO.				

LOUDON COUNTY ROAD LIST
01-08-03

ROAD NAME	LENGTH	COUNTY	CLASS	ROAD BED	RIGHT	CURBED
E	MILES	OF	AND	WIDTH	OF WAY	SUBDIV
		STATE AID	WIDTH		WIDTH	DEAD END
EAST COAST TELlico PKWY	5.7	SA				
EASTER DRIVE	0.2	CO.				
EASTER RIDGE ROAD	0.3	CO.	3-17'	20'	
EASTMAN DRIVE	2.5	CO.				
EBLEN ROAD	0.2	CO.				
ECHO HOLLOW ROAD	0.4	CO.				
EDGE LANE	0.2	CO.				
EDITH LANE	0.5	CO.				
EDWARDS SCHOOL ROAD	0.5	CO.				
EL CAMINO LANE	0.4	CO.				DE
ELLIS ROAD	0.3	CO.				
ENGEL ROAD	0.4	CO.				
ERIE ROAD	2.6	CO.			
ESTES ROAD	1.4	CO.				
EVERGREEN CIRCLE	0.2	CO.				
F						
FAIRVIEW DRIVE	0.1	CO.	3-18'	18'		DE
FAIRVIEW ROAD	1.7	CO.				
FAIRWAY DRIVE	0.2	CO.				CURBED
FISHER LANE	1.8	CO.				

PAGE 8 OF 36

LOUDON COUNTY ROAD LIST
01-08-03

ROAD NAME	LENGTH	COUNTY	CLASS	ROAD BED	RIGHT	CURBED
F	MILES	OR	AND	WIDTH	OF WAY	SUBDIV
		STATE AID	WIDTH		WIDTH	DEAD END
FLATWOODS ROAD	1.8	CO.				
FORD ROAD	1.7	SA	3-20'	20'	
FORE DRIVE	0.1	CO.				CURBED
FOREST HEIGHTS CIRCLE	1	CO.				
FOREST HILLS DRIVE	0.1	CO.	3-20'
FORK CREEK ROAD	3	CO.				
FORK ROAD	0.1	CO.				
FORTNER ROAD	0.1	CO.				
FOSHEE ROAD	1.5	CO.				
FOSTER DRIVE	0.4	CO.	3-28'	CURB
FOSTER ROAD	1.2	CO.				
FOUNTAIN HEAD COURT	0.1	CO.				CURB-DE
FOUTE TOWN ROAD	0.2	CO.	4-12'	13'		DE
FOX HUNTERS ROAD	0.4	CO.	4-13'	13'		DE
FRIENDSHIP ROAD	0.6	CO.				
FRIENDSVILLE ROAD	2.5	CO.				
G						
GALLAHER ROAD	0.3	CO.				
GALYON DRIVE	0.1	CO.				
GALYON ROAD	0.8	CO.				
GAP ROAD	1.1	CO.				

PAGE 9 OF 36

LOUDON COUNTY ROAD LIST
01-08-03

ROAD NAME	LENGTH	COUNTY	CLASS	ROAD BED	RIGHT	CURBED
G	MILES	OR	AND	WIDTH	OF WAY	SUBDIV
		STATE AID	WIDTH	WIDTH	WIDTH	DEAD END
GASTON ROAD	0.2	CO.				
GENTRY DRIVE	0.2	CO.				
GENTRY ROAD	0.8	CO.				
GET GOOD HOLLOW ROAD	1.8	CO.				
GIFFIN CIRCLE	0.4	CO.				
GILBERT LANE	0.5	CO.				DE
GLENDALE COMMUNITY ROAD	1.5	CO.				
GLEN MAR DRIVE	0.4	CO.	3-24'	CURB-DE
GRANDVIEW DRIVE(LC)	0.3	CO.	3-28'	CURB
GRANDVIEW DRIVE(LO)	0.4	CO.				
GRAPE TREE COURT		CO.				CURBED
GREEN DRIVE	0.5	CO.				
GRIFFITS KEEP COURT	0.2	CO.				CURBED
GRIMES ROAD	1.9	CO.				
GRUBB LANE	0.1	CO.				
GRUBB ROAD	0.8	CO.				
GRYDER LANE	0.6	CO.				
H						
HACKNEY CHAPEL ROAD	0.7	CO.				
HALL ROAD	1	CO.				
HALL STREET	0.7	CO.	4-18'			
HAMMONTREE LANE	0.3	CO.				
HAPPY HOLLOW ROAD	2.7	SA				
HARBOR POINT COURT	0.1	CO.	3-24'	CURB-DE
HARBOUR PLACE	0.1	CO.	3-23'	CURB-DE

PAGE 10 OF 36

LOUDON COUNTY ROAD LIST
01-08-03

ROAD NAME	LENGTH	COUNTY	CLASS	ROAD BED	RIGHT	CURBED
H	MILES	OR	AND	WIDTH	OF WAY	SUBDIV
		STATE AID	WIDTH		WIDTH	DEAD END
HARBOUR VIEW DRIVE	0.7	CO.	3-23'	CURB-DE
HARDIN DRIVE	0.4	CO.	4-19'	23'
HARMON LANE	0.2	CO.
HARRIS ROAD	1.5	CO.
HARRISON LANE	1	CO.
HARRISON ROAD	2.4	CO.
HATLEY DRIVE	0.3	CO.
HEATHER LANE	0.1	CO.
HEATON ROAD	0.3	CO.
HEMMS ROAD	0.3	CO.	4-13'	14'	DE
HICKEY DRIVE	2.6	CO.
HICKORY CREEK ROAD	2.6	SA
HICKORY VALLEY ROAD	0.4	CO.
HIDDEN VALLEY LANE	0.1	CO.	4-18'	20'	DE
HIDDEN VALLEY ROAD	0.1	CO.	4-18'	20'
HIGHLAND AVENUE	0.6	CO.
HINES VALLEY ROAD	5.9	SA
HIRST CIRCLE	0.7	CO.	3-24'	CURBED
HOFFMAN DRIVE	0.2	CO.
HOFFMAN LANE	0.1	CO.
HOLBROOK AVENUE	0.2	CO.
HOLLAND TRAIL	0.7	CO.	4-19'	23'
HOLT DRIVE	0.6	CO.
HOLT ROAD	0.6	CO.
HOPE CREEK ROAD	0.9	CO.	DE
HOTCHKISS VALLEY LANE	0.2	CO.
HOTCHKISS VALLEY ROAD E	4.6	SA

PAGE 11 OF 36

LOUDON COUNTY ROAD LIST
01-08-03

ROAD NAME	LENGTH MILES	COUNTY OR STATE AID	CLASS AND WIDTH	ROAD BED WIDTH	RIGHT OF WAY WIDTH	CURBED SUBDIV DEAD END
H						
HOTCHKISS VALLEY ROAD W	1.7	CO.	_____	_____	_____	_____
HOUK ROAD	0.2	CO.	_____	_____	_____	_____
HUBBARD ROAD	1.8	CO.	_____	_____	_____	_____
HUFFS FERRY ROAD N	1.8	CO.	_____	_____	_____	_____
HUNTSVILLE HOLLOW ROAD	1.1	CO.	_____	_____	_____	_____
I						
INDPENDENCE LANE	0.1	CO.	4-12'	14'	_____
INTERSTATE LANE	0.6	CO.	_____	_____	_____	_____
J						
JACKSON BEND ROAD	1.5	CO.	_____	_____	_____	_____
JACKSON CEMETERY ROAD	0.4	CO.	_____	_____	_____	_____
JACKSON FERRY ROAD	1.6	CO.	_____	_____	_____	_____
JACOBS ROAD	0.5	CO.	_____	_____	_____	_____
JAMES DRIVE	0.3	CO.	3-26'	CURB-DE
JESSIE LANE	0.2	CO.	3-27'	CURB

PAGE 12 OF 36

LOUDON COUNTY ROAD LIST
01-08-03

ROAD NAME	LENGTH MILES	COUNTY OR STATE AID	CLASS AND WIDTH	ROAD BED WIDTH	RIGHT OF WAY WIDTH	CURBED SUBDIV DEAD END
J						
JIM CONNER ROAD	0.2	CO.	4-12'	16'	_____	DE
JIM DYKE ROAD	1.5	CO.	_____	_____	_____	_____
JOHNSON CHURCH ROAD	0.3	CO.	_____	_____	_____	_____
K						
KEATON ROAD	0.3	CO.	_____	_____	_____	DE
KEENER LANE	0.3	CO.	4-12'	12'	_____	DE
KENNY BROOK LANE	0.2	CO.	_____	_____	_____	_____
KIMBRELL ROAD	0.7	CO.	_____	_____	_____	_____
KING ROAD	0.8	CO.	_____	_____	_____	_____
KISER LANE	0.3	CO.	_____	_____	_____	_____
KISER ROAD (LO)	1.1	CO.	_____	_____	_____	_____
KISER STATION ROAD (G)	0.8	CO.	_____	_____	_____	_____
L						
LAKE COVE ROAD	0.3	CO.	3-24'	CURBED
LAKE CREST DRIVE	1	CO.	3-24'	CURBED
LAKE DRIVE	0.7	CO.	_____	_____	_____	_____

PAGE 13 OF 36

01-08-03

ROAD NAME	LENGTH	COUNTY	CLASS	ROAD BED	RIGHT	CURBED
		OR	AND		OF WAY	SUBDIV
L	MILES	STATE AID	WIDTH	WIDTH	WIDTH	DEAD END
LAKE FOREST DRIVE	0.2	CO.	3-21'	21'		DE
LAKE HARBOUR DRIVE	0.4	CO.	3-24'	CURB-DE
LAKE POINT DRIVE	0.1	CO.	3-18'			CURB-DE
LAKELAND DRIVE	2.7	SA	3-20'	21'		
LAKELAND FARMS ROAD	0.4	CO.	4-12'	14'		DE
LAKESIDE DRIVE	1.4	CO.	3-18'	18'	
LAKEMIEW ROAD	1.7	CO.	3-22	23'		
LAKEWOOD DRIVE	0.6	CO.				
LANE ROAD	0.2	CO.	3-16'	17'		DE
LARUE ROAD	0.1	CO.				
LAURA LANE	0.1	CO.				
LEE HI LANE	0.1	CO.				
LEE SHIRLEY ROAD	0.2	CO.				
LEEPER'S FERRY ROAD	0.5	CO.				
LEEPER PARKWAY	0.2	CO.	3-26'	CURB
LENNOX COURT	0.1	CO.				CURB-DE
LENOIR DRIVE	0.1	CO.	3-26'	CURBED
LEONA DRIVE	0.3	CO.				
LETTERMAN ROAD	0.1	CO.				
UNDER LANE	0.1	CO.	3-24'	CURB-DE
LINGENFELTER LANE	0.1	CO.	3-20'	CURB-DE
LITTLE MOUNTAIN LANE	0.5	CO.				
LITTLE SHUBERT ROAD	0.1	CO.				
LITTLE VALLEY ROAD	1.8	CO.				
LONG COVE COURT	0.3	CO.	3-24'	CURB-DE
LONG ROAD	0.2	CO.				
LOU GODDARD LANE	0.3	CO.				
LOUDON DRIVE		CO.				
LOUDON RIDGE ROAD	2.6	SA				
LYNN ROAD	1.8	CO.				
LYNNWOOD DRIVE	0.7	CO.				

PAGE 14 OF 36

LOUDON COUNTY ROAD LIST
01-08-03

ROAD NAME	LENGTH	COUNTY	CLASS	ROAD BED	RIGHT	CURBED
M	MILES	OR	AND	WIDTH	OF WAY	SUBDIV
		STATE AID	WIDTH		WIDTH	DEAD END
MALONE ROAD (LC)	0.9	CO.				
MALONE ROAD (LO)	1.2	SA				
MANIS ROAD	0.8	CO.				
MAPLE HILL ROAD	1.4	SA				
MAPLETREE LANE	0.1	CO.	3-24'	CURB-DE
MARBLE BLUFF ROAD	1.3	SA				
MARTEL ROAD	4.2	SA	3-21'	21'		
MARKWOOD ROAD	1	CO.				
MASHBURN DRIVE	0.4	CO.	4-13'	13'		DE
MATLOCK BEND ROAD	4.7	CO.				
MATLOCK BEND ROAD E	1.9	CO.				
MATLOCK ROAD	0.6	CO.				
MATLOCK TRAIL	0.3	CO.				
MAYO ROAD	0.8	CO.				
MAYO ROAD SOUTH	0.2	CO.				
MCDANIEL LANE	0.2	CO.	4-18'	20'	DE
MCGHEE ROAD	0.8	CO.				
MCKELVEY ROAD	0.7	CO.				
MCTEER ROAD	0.3	CO.				
MEADOW DRIVE	0.3	CO.	3-28'	CURB
MEADOW ROAD N	2.6	SA				
MEADOW ROAD W	2.7	SA				
MEALER ROAD	0.6	CO.				
MIDWAY ROAD	0.8	CO.	3-17'	19'	

PAGE 15 OF 36

LOUDON COUNTY ROAD LIST
01-06-03

ROAD NAME	LENGTH	COUNTY	CLASS	ROAD BED	RIGHT	CURBED
M	MILES	OR	AND	WIDTH	OF WAY	SUBDIV
		STATE AID	WIDTH		WIDTH	DEAD END
MILLERS COVE LANE	0.3	CO.				CURBED
MILLER ROAD	0.3	CO.	3-24'	CURB
MILLER ROAD	0.4	CO.	4-12'		
MIMOSA STREET	0.1	CO.	4-18'	20'		DE
MISTY RIDGE DRIVE	0.3	CO.	3-27'	CURB-DE
MISTY VIEW DRIVE	0.2	CO.				CURBED
MONTCREST DRIVE	0.1	CO.				
MONTEREY DRIVE	0.3	CO.				
MONTOOTH ROAD	0.5	CO.				
MONTVIEW ROAD	0.7	CO.				
MORGANTON CEMETERY ROAD	0.6	CO.				
MORGANTON ROAD	4.2	SA				
MORTON LANE	0.2	CO.	3-14'	14'		DE
MORTON ROAD	1.3	CO.	3-18'	18'	
MOSS ROAD	0.8	CO.				
MOUNTAIN VIEW ROAD	0.5	CO.				
MT. ZION CHURCH ROAD	0.5	CO.				
MUDDY CREEK ROAD	1.4	SA	3-23'	28'	
MURRY'S CHAPEL ROAD	0.9	CO.				
MYERS ROAD (LC)	0.5	CO.				
MYRTLE ROAD	0.4	CO.				

PAGE 16 OF 36

LOUDON COUNTY ROAD LIST
01-08-03

ROAD NAME	LENGTH	COUNTY	CLASS	ROAD BED	RIGHT	CURBED
N	MILES	OR	AND	WIDTH	OF WAY	SUBDIV
		STATE AID	WIDTH	WIDTH	WIDTH	DEAD END
NATIONAL CAMPGROUND ROAD	1.6	SA				
NEELEY ROAD	0.1	CO.	4-10'	12'		DE
NESS LANE	0.3	CO.				
NEW HOPE ROAD	2.3	CO.			
NEW MACEDONIA ROAD	0.2	CO.				
NEWBERRY DRIVE	0.5	CO.				
NEWTON ROAD	0.2	CO.			
NICHOLS ROAD	0.4	CO.	4-13'	14'		DE
NILES FERRY ROAD	2.1	CO.				
NORTH HOLSTON DRIVE	0.4	CO.				
NORTH TRIGONIA ROAD	2.5	CO.				
NORTHSHORE DRIVE	2.1	CO.	3-21'	23'	
NORTHVIEW DRIVE	0.3	CO.				
NOTCH-IN-HILL ROAD	2.9	CO.				
O						
OAK CHASE BLVD	0.6	CO.				CURBED
OAK GROVE ROAD	0.7	CO.				
OAKWOOD ESTATES DRIVE (UNIT 3)	0.8	CO.	3-24'	CURB-DE
OLD BAILEY ROAD	0.2	CO.	4-11'			DE

LOUDON COUNTY ROAD LIST
01-08-03

ROAD NAME	LENGTH MILES	COUNTY OR STATE AID	CLASS AND WIDTH	ROAD BED WIDTH	RIGHT OF WAY WIDTH	CURBED SUBDIV DEAD END
O						
OLD FARM ROAD	0.1	CO.				
OLD GREENBACK ROAD	0.7	CO.				
OLD HOLLOW ROAD	0.8	CO.				
OLD HWY 95	2.4	CO.				
OLD KINGSTON ROAD	2.4	CO.				
OLD LEE HIGHWAY	0.4	CO.				
OLD MIDWAY ROAD	1.1	CO.	3-17'	17'	
OLD NILES FERRY PIKE	0.1	CO.				
OLD SINKING CREEK ROAD	0.8	CO.				
OLD SPEARS ROAD	0.3	CO.	4-13'	14'		DE
OLD STAGE ROAD	0.9	CO.	4-18'	20'	
OLD SUGAR LMB ROAD	1.8	CO.				
OODY ROAD	0.4	CO.				
ORCHARD DRIVE	0.1	CO.	3-24'	CURB
OREN WHITE ROAD	0.3	CO.				
OSPREY COVE COURT	0.2	CO.	3-24'	CURB-DE
OTTER LANE	0.1	CO.	3-24'	CURB-DE
OUTER DRIVE	0.5	CO.				
OVERLOOK DRIVE	0.1	CO.				CURBED
OVERLOOK ROAD	0.2	CO.				
OWNBY ROAD	0.1	CO.				
OXBOW ROAD	0.3	CO.				
P						
PALMER DRIVE	0.6	CO.	3-14'	15'		DE
PAR DRIVE	0.1	CO.				CURBED
PARDUE LANE	0.4	CO.	4-10'	12'		DE
PARKWAY DRIVE	0.3	CO.				DE

LOUDON COUNTY ROAD LIST
01-08-03

ROAD NAME	LENGTH	COUNTY	CLASS	ROAD BED	RIGHT	CURBED
P	MILES	OR	AND	WIDTH	OF WAY	SUBDIV
		STATE AID	WIDTH		WIDTH	DEAD END
PARRIS DRIVE	1.7	CO.	3-19'	20'	_____
PATE ROAD	0.2	CO.	_____	_____	_____	_____
PAW PAW PLAINS ROAD	0.8	CO.	_____	_____	_____	_____
PAW PAW PLAINS ROAD W	0.9	CO.	_____	_____	_____	_____
PEACHTREE STREET	0.1	CO.	_____	_____	_____	_____
PEMBROOK COURT	0.1	CO.	_____	_____	_____	CURB-DE
PERKLE ROAD	0.6	CO.	_____	_____	_____	_____
PETERSON ROAD	1.8	CO.	_____	_____	_____	_____
PHELPS ROAD	0.9	CO.	3-15'	18'	_____
PHILLIPS ROAD	0.5	CO.	_____	_____	_____	_____
PICKLE ROAD	0.4	CO.	_____	_____	_____	_____
PINECREST CIRCLE	0.7	CO.	3-19'	21'	_____
PINE GROVE/PROVIDENCE ROAD	0.6	SA	_____	_____	_____	_____
PINE LANE	0.2	CO.	_____	_____	_____	DE
PINE STREET (LO)	0.1	CO.	_____	_____	_____	_____
PINE TOP STREET (G)	0.6	CO.	_____	_____	_____	_____
POINT HARBOUR DRIVE	0.2	CO.	3-23'	CURB-DE
POND CREEK ROAD	3.9	SA	_____	_____	_____	_____
POND ROAD	3.8	CO.	_____	_____	_____	_____
POPLAR RIDGE ROAD	0.9	CO.	_____	_____	_____	_____
POPLAR SPRINGS ROAD	0.9	CO.	_____	_____	_____	_____

PAGE 19 OF 36

LOUDON COUNTY ROAD LIST
01-08-03

ROAD NAME	LENGTH	COUNTY	CLASS	ROAD BED	RIGHT	CURBED
P	MILES	OR	AND	WIDTH	OF WAY	SUBDIV
		STATE AID	WIDTH		WIDTH	DEAD END
PORT MADISON DRIVE	0.4	CO.				
PRICE ROAD	0.7	CO.				DE
PROSPECT CHURCH ROAD	1.9	SA				
PUMP STATION ROAD	0.2	CO.				
Q						
QUEENER ROAD	0.2	SA				
QUILLEN OVERLOOK DRIVE	0.1	CO.				
R						
RABY TOWN ROAD	0.4	CO.				
RANCH ROAD	0.5	CO.				
RANCHERO DRIVE	0.2	CO.	3-21'	CURB-DE
RAUSIN ROAD	3.4	CO.				
RAWHIDE TRAIL	0.3	CO.	3-28'	CURB-DE
RED GROUSE DRIVE	0.4	CO.	3-24'	CURB-DE
REED SPRINGS CHURCH ROAD	0.7	CO.				
REED SPRINGS ROAD	0.8	CO.				
REST CAMP ROAD	1.5	CO.				

PAGE 10 OF 36

LOUDON COUNTY ROAD LIST

01-06-03

ROAD NAME

LENGTH

COUNTY

CLASS

ROAD BED

RIGHT

CURBED

R

MILES

OR
STATE AID

AND
WDTH

WDTH

OF WAY
WDTH

SUBDIV
DEAD END

REX LANE

0.1

CO.

RIDEN ROAD

0.1

CO.

RIDGEBARK LANE

0.2

CO.

3-24'

.....

.....

CURB-DE

RIDGEVIEW DRIVE

0.1

CO.

CURB-DE

RILEY DRIVE

0.7

CO.

RICHEY ROAD

1.1

CO.

RIVER CHASE ROAD

0.3

CO.

3-28'

.....

.....

CURB-DE

RIVER POINT DRIVE

0.2

CO.

3-24'

.....

.....

CURB-DE

RIVERS EDGE DRIVE

0.3

CO.

CURBED

RIVER VIEW DRIVE

1

CO.

CURBED

RIVERVIEW GOLF DRIVE

0.4

CO.

CURBED

RIVERVIEW ROAD

1

CO.

DE

ROAX ROAD

0.3

CO.

ROBERSON SPRINGS ROAD

2.7

SA

ROBERTS CIRCLE

0.4

CO.

3-18'

18'

.....

.....

ROBERTS ROAD

0.4

CO.

ROBINSON CIRCLE (LC)

0.7

CO.

ROBINSON DRIVE (LC)

0.1

CO.

ROBINSON ROAD (LO)

0.4

CO.

ROCK QUARRY ROAD

0.7

CO.

ROCKY TOP ROAD

0.6

CO.

DE

RODNEY ROAD

0.1

CO.

ROLLING ACRES DRIVE

0.1

CO.

ROSS ROAD

1.9

CO.

ROUNDUP LANE

0.1

CO.

3-25'

.....

.....

CURB-DE

ROY LONAS ROAD

0.4

CO.

RURITAN ROAD

0.2

CO.

DE

RUSSELL LANE

0.3

CO.

4-19'

20'

.....

.....

RUSSELL ROAD

0.1

CO.

RYAN ROAD

0.7

CO.

PAGE 21 OF 36

LOUDON COUNTY ROAD LIST
01-08-03

ROAD NAME	LENGTH	COUNTY	CLASS	ROAD BED	RIGHT	CURBED
S	MILES	OR	AND	WIDTH	OF WAY	SUBDIV
		STATE AID	WIDTH		WIDTH	DE. & END
SAMPSON BLVD	0.1	CO.	3-30'	CURBED
SANDY SHORE DRIVE	0.8	CO.				
SCENIC DRIVE	0.3	CO.				
SCENIC VIEW DRIVE	0.3	CO.				
SHAW FERRY LANE	0.8	CO.	3-25'	27'		DE
SHAW FERRY ROAD	2.5	SA	3-18'	18'	
SHAW FERRY ROAD N	1.1	CO.				
SHELL ROAD	0.2	CO.				
SHELTON GROVE ROAD	0.7	CO.				
SHIPLEY LANE	0.3	CO.	4-13'	13'	
SHULTZ LANE	0.4	CO.				
SILCO DRIVE	0.5	CO.	3-24'	CURB-DE
SIMMONS ROAD (LO)	0.3	CO.				
SIMPSON ROAD (LC)	0.5	CO.				
SIMPSON ROAD EAST	0.4	CO.	4-19'	20'	
SINKING CREEK ROAD	2.4	CO.				
SKYMEW DRIVE	0.3	CO.				CURB-DE
SLAB TOWN ROAD	0.3	SA				
SMALLEN ROAD	1.1	CO.				
SMITH VALLEY ROAD	0.1	CO.	4-13'	15'		DE

PAGE 22 OF 36

LOUDON COUNTY ROAD LIST
01-06-03

ROAD NAME	LENGTH	COUNTY	CLASS	ROAD BED	RIGHT	CURBED
S	MILES	OR	AND	WIDTH	OF WAY	SUBDIV
		STATE AID	WIDTH		WIDTH	DEAD END
SNODDERLY ROAD	0.5	CO.				
SNOW ROAD	0.3	CO.	3-18'	18'	
SPRING ROAD	0.5	CO.				
SPRING VIEW DRIVE	0.3	CO.	3-28'	CURB-DE
STAFFORD ROAD	0.7	CO.				
STALLCUP ROAD	0.3	CO.				
STEEKEE CREEK ROAD	3.4	SA				
STEEKEE ROAD	4.3	SA				
STEEKEE SCHOOL ROAD	2.2	SA				
STEVENS LANE	0.4	CO.				
STEVENS ROAD	0.2	CO.				
STINNETT ROAD	0.3	CO.				
STOCKTON VALLEY ROAD	6.2	SA				
STRANGE ROAD	0.5	CO.	3-18'	18'	
SUGARWOOD ROAD	0.3	CO.				
SUNNYSIDE ROAD	2.8	CO.				
SUNSET DRIVE	0.1	CO.				

LOUDON COUNTY ROAD LIST
01-08-03

ROAD NAME	LENGTH	COUNTY	CLASS	ROAD BED	RIGHT	CURBED
T	MILES	OR	AND	WIDTH	OF WAY	SUBDIV
		STATE AID	WIDTH		WIDTH	DEAD END
TANGLEWOOD DRIVE	0.9	CO.	3-23'	CURB-DE
TARWATER ROAD	1.3	CO.				
TAYLOR DRIVE	0.1	CO.	4-18'	18'		DE
TEETERS ROAD	0.3	CO.				
TEN MILE ROAD	0.2	CO.				
THOMPSON BRIDGE ROAD	0.1	CO.				
THOMPSON ROAD	0.2	CO.				
THORNTON DRIVE	0.5	CO.				DE
THURMAN DRIVE	0.5	CO.	4-25'	27'		DE
THURMER CIRCLE	0.2	CO.	3-28'	CURB-DE
TILLEY ROAD	0.8	CO.				
TIMBERLINE DRIVE	0.3	CO.				CURBED
TIMBER RIDGE DRIVE	0.3	CO.				
TINNEL LANE	0.2	CO.				
TINNEL ROAD	0.4	CO.				
TIVOLI DRIVE	0.2	CO.				
TOWN CREEK CIRCLE	0.2	CO.				
TOWN CREEK ROAD E	1.4	SA				
TOWN CREEK ROAD W	1.4	SA				
TRADES DRIVE	0.1	CO.				
TRAIL VIEW DRIVE	0.3	CO.				
TRIGONIA ROAD	0.8	CO.				
TURNER LANE	0.2	CO.				CURB-DE
TURN LANE ROAD	0.3	CO.				
TURTLE COVE COURT	0.2	CO.	3-24'	CURB-DE
TWN COVE CIRCLE	0.5	CO.	3-28'	CURB-DE

LOUDON COUNTY ROAD LIST
01-08-03

ROAD NAME	LENGTH	COUNTY	CLASS	ROAD BED	RIGHT	CURBED
		OR	AND		OF WAY	SUBDIV
T	MILES	STATE AID	WIDTH	WIDTH	WIDTH	DEAD END
TWIN COVE DRIVE	0.4	CO.	3-28'	CURB-DE
U						
UNION FORK CREEK CHURCH ROAD	1.3	CO.				
UNITIA ROAD	2.9	SA				
V						
VALLEY DALE DRIVE	0.2	CO.				
VALLEY MEW DRIVE	0.1	CO.				CURBED
VARNER HOLLOW ROAD	0.4	CO.				
VAUGHN ROAD	0.4	CO.				
VAUGHN'S CHAPEL ROAD	0.3	CO.				
VINEYARD ROAD	0.8	CO.				
VIRTUE ROAD	0.5	SA	3-18'	20'	
VONORE ROAD	4.3	SA				

LOUDON COUNTY ROAD LIST
01-08-03

ROAD NAME	LENGTH	COUNTY	CLASS	ROAD BED	RIGHT	CURBED
W	MILES	OR	AND	WIDTH	OF WAY	SUBDIV
		STATE AID	WIDTH		WIDTH	DEAD END
WADE LANE	0.3	CO.				
WADE ROAD EAST	0.5	CO.				DE
WADE ROAD WEST	1.3	CO.				
WALLER FERRY ROAD	1.2	CO.				
WARD ROAD (LC)	0.7	CO.				DE
WARD ROAD (LO)	0.8	CO.				
WASHINGTON PIKE	4.3	CO.				
WATKINS ROAD	2.2	SA				
WATSON ROAD	1.4	CO.				
WATT CEMETERY ROAD	2.7	CO.				
WEBB CIRCLE	0.1	CO.				
WEBB DRIVE	0.5	CO.				
WEDGEWOOD DRIVE	0.4	CO.				
WESCHESTER ROAD	0.2	CO.				CURBED
WESLEY ROAD	0.3	CO.	4-19'	23'	
WEST FORK ROAD	0.4	CO.				
WEST LANE	0.2	CO.				
WESTSHORE DRIVE	0.2	CO.				
WHEAT ROAD	1.4	SA				
WHEELER DRIVE	0.1	CO.				
WHITE OAK ROAD	0.3	CO.				
WHITE ROAD	0.8	CO.				
WHITE WING ROAD	0.2	SA				
WHITE WING ROAD N	2.4	SA				
WHITE WING ROAD W	0.2	SA				
WHITNEY DRIVE	0.4	CO.				CURBED

ROADS REMOVED FROM THE 1989
COUNTY ROAD LIST DUE TO BEING
PRIVATE ROADS OR ROADS ANNEXED
BY THE CITIES OF LOUDON, LENOIR
CITY, PHILADELPHIA, GREENBACK OF
ROADS IN ANOTHER COUNTY

PRIVATE ROADS

ALEXANDER ROAD
BEAVER BROOK DRIVE
EAST COVE
NOTHCOVE ESTATES DRIVE
SOUTHSHORE DRIVE
TIMBERLAKE DRIVE

CITY OF LOUDON

BLAIR BEND DRIVE
BOB WHITE DRIVE
CREEKWOOD CIRCLE
HILLVALE LANE
HILLMEW LANE
RIVER BEND ROAD
ROBERSON LANE

LOUDON COUNTY ROAD LIST
01-08-03

ANNEXED ROADS

CITY OF LENOIR CITY

CHURCH ROAD
CRISP ROAD
INTERCHANGE PARK LANE
JOHNSON CIRCLE
JOHNSON DRIVE
LEE DRIVE
LLOYD LANE
MOATS ROAD
NORTHSIDE DRIVE
PEARL DRIVE
PINE RIDGE DRIVE
REDBUD COURT
SHADY LANE
SHARP DRIVE
SHEA DRIVE
SIMPSON ROAD WEST
TOM LEE ROAD
VIRGINIA LANE

CITY OF PHILADELPHIA

ELM STREET

PAGE 29 OF 36

LOUDON COUNTY ROAD LIST
01-08-03

ANNEXED ROADS

CITY OF GREENBACK

HUTTON ROAD
KINSER LANE
KYKER ROAD
MYERS ROAD
PINE GROVE CIRCLE
PINE STREET
RAMSEY ROAD
RUDD ROAD
STEELE ROAD
STONE DRIVE
WOODS DRIVE

OTHER COUNTY - BLOUNT

FROG POND ROAD
FRONTAGE ROAD
GREGO DRIVE

PAGE 30 OF 36

ROADS REMOVED FROM THE 1989
ROAD LIST FOR VARIOUS REASONS

ROAD NAME

COCK ROAD	NOT	FOUND
DAVID RIDGE ROAD	MIS-	SPELLING OF DAMS RIDGE RD
FORTNER DRIVE	NOT	FOUND
HUNSVILLE HOLLOW ROAD	MIS-	SPELLING OF HUNTS- VILLE HOL- LOW ROAD
PERKEY ROAD	NOT	FOUND

LOUDON COUNTY ROAD LIST
01-08-03

ADDENDUM #5

ROADS REMOVED FROM ROAD LISTS
OF PREVIOUS YEARS FOR VARIOUS

REASONS

ROAD NAME

ALMA PLACE	CITY OF LOUDON	ANNEXED		
BLAIR BEND ROAD	CITY OF LOUDON	ANNEXED		
BUTTERMILL ROAD	MIS- SPELLING	OF BUTTERMILK ROAD		
CHESTNUT RIDGE DRIVE	CITY OF LENOIR	CITY ANNEXED		
CROOKED OAK DRIVE	CITY OF LENOIR	CITY ANNEXED		
DAVID DRIVE	MIS- SPELLING	OF DAVIS DRIVE		
DAVID DRIVE	CITY OF LENOIR	CITY ANNEXED		
DUNRIDGE ROAD	IT IS	DUNRIDGE LANE		
EUGENE DISNEY ROAD	NEVER BEEN	ACCEPTED		
EVERETT WILLIAMS ROAD	NEVER BEEN	ACCEPTED		
FIPPS LANE	CITY OF GREEN-	BACK ANNEXED		
FINLEY DRIVE	CITY OF LENOIR	CITY ANNEXED		
GETT ROAD	CITY OF GREEN-	BACK ANNEXED		
JENA ROAD	CITY OF GREEN-	BACK ANNEXED		
JONES DRIVE	CITY OF GREEN-	BACK		
JONES ROAD	NOW WOOD-	LAWN CHURCH ROAD		
NEW SUGAR LIMB ROAD	NOW STATE	ROAD #233		
NORTHSHORE DRIVE (G)	IN	FOOTHILLS POINTE		
NORWOOD STREET	CITY OF LENOIR	CITY ANNEXED		
OAKLAND ROAD	NOW STATE	ROAD #324		
OVERLOOK LANE	CITY OF LOUDON	ANNEXED		
PARKWOOD CIRCLE	IN	FOOTHILLS POINTE		
SHAMROCK LANE	NAME CHANGED TO	COULTER SHOALS CIRCLE		
SIMPSON ROAD	INCLUDED IN	SIMPSON ROAD (LC)		
TELLICO PARKWAY	NOW STATE	ROAD #444		
TURMAN DRIVE	NAME CHANGED TO	THURMAN CIRCLE		
WARES BEND ROAD	TVA	ROAD		

SUBDIVISIONS OF LOUDON COUNTY
01-06-03

ABBOTT CROSSING
ANCHORAGE
ANGLEWOOD
AVALON
BRANDYME
BRENTWOOD ESTATES
BURDETTE
CARTER
CEDAR HILLS
CLUNCH VIEW ESTATES
COCKRELL
CONKINNON
CORDOVA
COULTER SHOALS
COVENANT CIRCLE
CRANFILL
CUSICK CIRCLE #1
CUSICK CIRCLE #2
DIXIE LEE VILLAGE
DEERFIELD CROSSING
DUFF TURNER

PAGE 33 OF 36

SUBDIVISIONS OF LOUDON COUNTY
01-08-03

EAST HILLS
EATON FOREST
EATON VILLAGE
EATONWOOD
FOOTHILLS POINTE
FOREST HEIGHTS #1
FOREST HEIGHTS #2
FORT LOUDON ESTATES #1
FORT LOUDON ESTATES #2
FRANKLIN ESTATES
GAULT
GRIFFITH KEEP
GIFFIN
GREENACRES
HARDIN ESTATES
HARRISON HILLS
HARRISON PARK
HIDDEN VALLEY
HIDDEN OAKS
HIGHLAND HILLS
HUFFMAN BROTHERS
HOPE CREEK
HUBBARD

PAGE 34 OF 36

SUBDIVISIONS OF LOUDON COUNTY
01-08-03

LAKE POINTE
LAKEVIEW (GREENBACK)
LAKEVIEW (LOUDON)
LANE
LEEPERS CROSSING
LINDNER VILLA
LITTLE MOUNTAIN ESTATES
LITTLE MT. VISTA
LYNWOOD
MALHON PLACE
MARTEL ESTATES
MARTEL ESTATES EAST
MATLOCK
MCDANIEL
MIDWAY
MILLER'S LANDING
MISTY RIDGE
MOUNTVIEW ESTATES
NORTH FORTY
NORTHVIEW ESTATES
OAKWOOD ESTATES
OAKWOOD ESTATES #2
OLD HICKORY

PAGE 35 OF 36

SUBDIVISIONS OF LOUDON COUNTY
01-08-03

PINE GROVE
PLEASANT HILL
PLEASANT VIEW
POINTE HARBOR
PORT MADISON
RANCHERO
RIVER CHASE
RIVER BEND
RIVERVIEW
RIVERVIEW GOLF COURSE
REMINGTON PLACE
ROBERTSON SPRINGS
SHARP ESTATES
SHAVER
SHAW FERRY
SILO ACRES
SNODDERLY
STOCKTON VALLEY ESTATES
STRANGE
SUMMIT HILLS
TANASI HILLS
TANGLEWOOD
TAYLOR
THE PINES
THE PLANTATION
TIMBER RIDGE
THURMAN CIRCLE
TUCK AWAY COVE
TWIN COVES
VINEYARD COVE
WILLIAMSBURG

PAGE 36 OF 36