

LOUDON COUNTY COMMISSION

REGULAR MEETING

August 05, 2002

- (1) **Public Hearing**
- (2) **Opening Of Meeting**
- (3) **Roll Call**
- (4) **Agenda Adopted**
- (5) **Minutes Adopted For June 24, 2002**
- (6) **Audience Comments On Agenda Items**
- (7) **Executive Session Held**
- (8) **TNWM, Inc.- Motion To Settle Died**
- (9) **TRDA Board Re-Appointment Approved, RESOLUTION 080502-A**
- (10) **Adult Oriented Business Board Appointments Approved, RESOLUTION 080502-B**
- (11) **Highway 70 Sewer Approved To Re-Bid, RESOLUTION 080502-C**
- (12) **Stekee Creek Road Rezoning Denied, RESOLUTION 080502-D**
- (13) **Unitia Road Rezoning Request Denied, RESOLUTION 080502-E**
- (14) **Webb Circle Rezoning Request Approved, RESOLUTION 080502-F**
- (15) **Sexually Oriented Adult Businesses Update**
- (16) **Courthouse Damages – Approved To Pay With Capital Projects Fund**
- (17) **Financial Summary Distributed, EXHIBIT G**
- (18) **321 Waterline Extension Resolution Approved, RESOLUTION 080502-H**
- (19) **Justice Center Report**
- (20) **Park Resigns Positions**
- (21) **El Camino Theatre Club Withdrawn**
- (22) **Justice Center Waterline Bid Approved**
- (23) **Building Commission Report**
- (24) **Bonds Approved**
- (25) **Notaries Approved**
- (26) **Recognition To Outgoing Commissioners**
- (27) **Audience Comments On Non-Agenda Items**
- (28) **Adjournment**

LOUDON COUNTY COMMISSION

STATE OF TENNESSEE
COUNTY OF LOUDON

PUBLIC HEARING

August 05, 2002
6:00 PM

(1)
Public Hearing

1. Request rezoning of property located at 3435 Steekee Creek Road, 1st Legislative District, referenced by Tax Map 62, Parcel 50.00, from District A-1, Rural Residential District, to C-2, General Commercial District. Owner: Dale Costner [02-05-94-RZ-CO]
No one came forward to speak.
2. Request rezoning of property located on Webb Circle, 2nd Legislative District, referenced by Tax Map 29J, Group A, Parcels 9.00, 10.00, 11.00, and 12.00, from A-2 Rural Residential District and C-2, General Commercial District, to R-1, Suburban Residential District, and O-1, Office Professional District
Commissioner Maples stated that Webb Circle is part of the 1st Legislative District rather than the 2nd.

REGULAR MEETING

(2)
Opening Of
Meeting

BE IT REMEMBERED that the Board of Commissioners of Loudon County convened in regular session in Loudon, Tennessee on the 5th day of August, 2002.

The **Honorable Roy Bledsoe** called the meeting to order.

Deputy Sheriff Sonny Rouston opened Court and led the Pledge of Allegiance to the Flag of the United States of America and Mr. Howard Luttrell gave the invocation.

(3)
Roll Call

Present were the following Commissioners: **Randolph, Thomas, Jenkins, Maples, Bledsoe, Masingo, Duff, Park and Harold.** (9)

Thereupon **Chairman Bledsoe** announced the presence of a quorum. Also present was the **Honorable George Miller, County Executive and County Attorney Harvey Sproul.**

(4)
Agenda
Adopted

Chairman Bledsoe requested the August 05, 2002 agenda be adopted.

Executive Miller requested to add two items to the agenda:

1. Justice Center Waterline by Purchasing Agent Howard Luttrell
2. Consideration of adopting a Resolution authorizing Purchasing Agent, Howard Luttrell, to re-bid the Highway 70 Sewer Project as soon as possible

Attorney Sproul requested that Item F1, "*Consideration of a proposal offered by El Camino Theatre Club, Inc. (William Hayes)*" be withdrawn from the agenda at the request of William Hayes.

A motion was made by **Commissioner Duff** with a second by **Commissioner Jenkins** to adopt agenda with requested changes.

Upon voice vote the motion **Passed** unanimously.

(5)
Minutes
Adopted For
June 24, 2002

Chairman Bledsoe requested the June 24, 2002 County Commission Meeting minutes be approved and accepted.

A motion was made by **Commissioner Masingo** with a second by **Commissioner Jenkins** to adopt minutes as presented.

Upon voice vote the motion **Passed** unanimously.

(6)
Audience
Comments On
Agenda Items

Chairman Bledsoe asked for any visitor wishing to address the commission regarding items on the planned agenda to come forward.

Mr. Joe Shudan, Loudon County resident, came forward to speak in opposition of rezoning request at Unitia Road and Highway 95.

Mr. Stan Harvey, Loudon County resident, came forward to speak in opposition of rezoning request at Unitia Road and Highway 95.

Mr. Van Shaver, Loudon County resident and 5th District Commissioner-elect, came forward to speak in opposition of approving the 321 waterline extension resolution and requested that County Commission delay any action until September 9, 2002 meeting.

Ms. Pat Hunter, Loudon County resident, came forward to speak in opposition of approving the 321 waterline extension resolution, citing concerns of rates increasing.

Executive Miller requested discussion and possible action on the following items:

(7)
Executive
Session Held

1. Report on consideration by commission of any matters pertaining to Tennessee Waste Movers, Inc. vs. Loudon County, set for trial August 6 - 7, 2002

Executive Session with **Loudon County Attorney Harvey Sproul** and **Attorney Ed Rayson** concerning this suit was held at 6:20 p.m.; Regular meeting reconvened at 7:20 p.m.

(8)
TNWM, Inc.-
Motion To
Settle Died

A motion was made by **Commissioner Park** to settle lawsuit with Tennessee Waste Movers, Inc. Motion died due to lack of second.

(9)
TRDA Board
Re-appoint-
ment
Approved

2. Consideration of adopting a resolution approving or acknowledging board or committee re-appointment by County Executive to the TRDA Board of Directors (Loudon County)

A motion was made by **Commissioner Park** with a second by **Commissioner Duff** to adopt this resolution.

Upon voice vote the motion **Passed** unanimously.

Resolution 080502-A

(10)
Adult Oriented
Business Board
Appointments
Approved

3. Consideration of adopting a resolution approving or acknowledging board or committee appointments by County Executive to the Loudon County Adult Oriented Business Board. Executive Miller requested that Commissioner-elect, Don Miller, be placed on this board. Commissioner Randolph requested to be removed from this board, and Executive Miller requested that Commissioner-elect, Bob Franke, serve on the board.

A motion was made by **Commissioner Harold** with a second by **Commissioner Maples** to adopt this resolution.

Upon voice vote the motion **Passed** unanimously.

Resolution 080502-B

(11)
Highway 70
Sewer
Approved To
Re-Bid

4. Consideration of adopting a resolution authorizing the Loudon County Purchasing Agent to re-bid the Highway 70 sewer project

A motion was made by **Commissioner Park** with a second by **Commissioner Duff** to adopt this resolution.

Upon voice vote the motion **Passed** unanimously.

Resolution 080502-C

Mr. Russ Newman, Office of Planning and Community Development, requested discussion and action on the following items:

(12)
Steekee Creek
Road Rezoning
Denied

1. Request rezoning of property located at 3435 Steekee Creek Road, 1st Legislative District, referenced by Tax Map 62, Parcel 50.00, from District A-1, Rural Residential District, to C-2, General Commercial District. Owner: Dale Costner [02-05-94-RZ-CO]

A motion was made by **Commissioner Randolph** with a second by **Commissioner Thomas** to deny this request.

Upon voice vote the motion **Passed** unanimously.

Resolution 080502-D

(13)
Unitia Road
Rezoning
Request
Denied

2. Request Rezoning of property located at the intersection of Highway 95 North and Unitia Road, 3rd Legislative District, referenced by Tax Map 47, Parcel 24.00, from C-1, Rural Center District, to R-1 Suburban Residential District. Owners: Gary Glarner and Jim Arwood [02-05-109-RZ-CO]

Planning Director, Russ Newman stated that owners requested that this item be dropped from the agenda. A motion was made by **Commissioner Masingo** with a second by **Commissioner Duff** to deny this request.

Upon voice vote the motion **Passed** unanimously.

Resolution 080502-E

(14)
Webb Circle
Rezoning
Request
Approved

3. Request rezoning of property located on Webb Circle, 1st Legislative District, referenced by Tax Map 29J, Group A, Parcels 9.00, 10.00, 11.00 and 12.00, from A-2, Rural Residential District and C-2, General Commercial District, to R-1, Suburban residential District and O-1, Office Professional District

A motion was made by **Commissioner Thomas** with a second by **Commissioner Randolph** to approve this request.

Upon voice vote the motion **Passed** unanimously.

Resolution 080502-F

(15)
Sexually
Oriented Adult
Businesses
Update

Planning Director, Russ Newman, updated County Commission on the efforts of the Adult Oriented Businesses Study Committee. As part of the committee's work, reviewed the county's zoning regulations for Adult Businesses and recommended to the county that the spacing requirement between Adult Businesses be increased from 1000 ft. to 2000 ft. They also recommended that the phrase "residential districts" be amended to read "residential zoning districts", which would clarify the intent of the restriction to apply to a certain distance from any residential zoning district boundary. The Planning Commission will consider these amendments at their next monthly meeting.

Mrs. Nancy Richesin, Director of Budgets and Accounts, requested discussion and possible action on following item:

(16)
Courthouse
Damages –
Approved To
Pay With
Capital
Projects Fund

1. Consideration of approving expenditure of funds from the Capital Projects fund to pay for damages at the Courthouse from the July 3, 2002 storm until reimbursed by the insurance company. Approximate amount: \$25,000.00 – 50,000.00.

A motion was made by **Commissioner Duff** with a second by **Commissioner Masingo** to approve this request.

Upon roll call vote the following commissioners voted **Aye**: **Randolph, Thomas, Jenkins, Maples, Masingo, Bledsoe, Duff, Park and Harold (9)**.

The following commissioners voted **Nay**: **(0)**.

The following commissioners were **Absent**: **(0)**.

Thereupon the chairman announced the motion **Passed**: **(9-0)**.

(17)
Financial
Summary
Distributed

Budget Director, Nancy Richesin, also distributed a Summary of Financial Statement for Month Ending June 30, 2002.

Exhibit G

(18)
321 Waterline
Extension
Resolution
Approved

Commissioner Duff requested consideration of adopting a resolution of intent by the Loudon County Commission of the County of Loudon to participate in an interlocal agreement with the city of Lenoir City, Tennessee, to participate and support certain water system improvements to stimulate the economic potential of the northern portion of Loudon County, Tennessee, by making application for available grant money for Northern Loudon County water system improvements.

Commissioner Duff requested that Executive Miller read the resolution aloud.

After much discussion, a **motion** was made by **Commissioner Duff** with a second by **Commissioner Park** to adopt this resolution.

Upon roll call vote the following commissioners voted **Aye: Thomas, Maples, Masingo, Bledsoe, Duff, Park and Harold (7).**

The following commissioners voted **Nay: Randolph and Jenkins: (2).**

The following commissioners were **Absent: (0).**

Thereupon the chairman announced the motion **Passed: (7-2).**

(19)
Justice Center
Report

Commissioner Park reported that with the Construction Manager at the Justice Center, approximately \$20,000.00 have been saved so far.

(20)
Park Resigns
Positions

Commissioner Park resigned all positions/board seats in county.

(21)
El Camino
Theatre Club
Withdrawn

Loudon County Attorney, Harvey Sproul, reported that the consideration of proposal offered by El Camino Theatre Club, Inc. had been withdrawn by the owner, William Hayes.

(22)
Justice Center
Waterline Bid
Approved

Purchasing Agent, Howard Luttrell, requested that consideration of awarding the contract for the Justice Center waterline extension be awarded to Adams and Sons, with the lowest bid of \$173,861.00

A **motion** was made by **Commissioner Park** with a second by **Commissioner Jenkins** to approve this request.

Upon roll call vote the following commissioners voted **Aye: Randolph, Thomas, Jenkins, Maples, Masingo, Bledsoe, Duff, Park and Harold (9).**

The following commissioners voted **Nay: (0).**

The following commissioners were **Absent: (0).**

Thereupon the chairman announced the motion **Passed: (9-0).**

(23)
Building
Commission
Report

Mr. Leo Bradshaw, Loudon County Building Commissioner, gave the monthly Building Commission reports.

	<u>June</u>		<u>July</u>
Permits issued:	64	Permits issued:	57
Fees:	\$ 4,281.00	Fees:	\$ 5,715.84
Estimated value:	\$ 3,563,030.00	Estimated value:	\$ 4,238,275

(24)
Bonds
Approved

Commissioner Masingo requested consideration of approving the following Bond Applications:

Gene Chrusciel

Brandy Burnette

A **motion** was made by **Commissioner Masingo** with a second by **Commissioner Thomas** to approve these bond applications.

Upon voice vote the motion **Passed** unanimously.

(25)
Notaries
Approved

Commissioner Masingo requested consideration of approving the following Notary Applications:

Brandy D. Burnette	Deborah E. Lee	Deborah S. Hicks
Catherine A. Elrod	Charles A. Chadwell	Wes R. Clenny
Bill R. Mellon	Brenda Hall	Shelia A. Phelps Oody
Richard A. Cooper	Linda B. Jett	Stewart M. Crane
Susan S. Clendenen	Frank H. Jollay, Jr.	Patricia Ball
Mark A. Shubert		

A **motion** was made by **Commissioner Masingo** with a second by **Commissioner Jenkins** to approved these notary requests.
Upon voice vote the motion **Passed** unanimously.

(26)
Recognition To
Outgoing
Commissioners

Executive Miller recognized Commissioners Masingo, Park, Randolph and Thomas with an appreciation plaque, whose terms expire August 31, 2002.

(27)
Audience
Comments On
Non-Agenda
Items

Chairman Bledsoe asked for any visitor wishing to address the commission regarding items not on the planned agenda to come forward.

Commissioner Masingo came forward to speak in appreciation of his time as County Commissioner.

Ms. Sharon Addison, who was unsuccessful in her run for 7th District County Commissioner, came forward to speak in appreciation of everyone's help during the election.

Mr. Pat Phillips, Loudon County Economic Development Agency, came forward to thank the outgoing commission members for their support of the agency over the past four years.

Executive Miller announced that Astec Industries, Inc. will be taking over the John Deere facility and recognized the Loudon County Economic Development Agency for their work in bringing that industry to Loudon County.

Chairman Bledsoe stated that it had been a pleasure working with the current commissioners over the years.

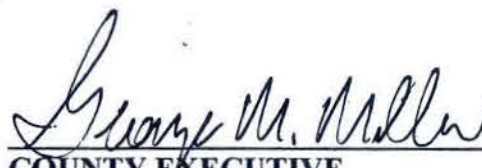
(28)
Adjournment

There being no further business, a **motion** being duly made and seconded, the August 05, 2002 meeting stood adjourned at 8:37 p.m.


CHAIRMAN

ATTEST:

COUNTY COURT CLERK


COUNTY EXECUTIVE

LOUDON COUNTY COMMISSION

RESOLUTION 080502 - A

**RESOLUTION APPROVING OR ACKNOWLEDGING BOARD OR
COMMITTEE APPOINTMENT BY COUNTY EXECUTIVE**

WHEREAS, by statute, and/or intergovernmental agreement and/or County Procedural Regulations, the County Executive has authority to make certain committee and board appointments; and

WHEREAS, an appointment (or appointments) is necessary and/or desirable at this time; and

WHEREAS, the County Executive appoints the following as a member of

TRDA BOARD OF DIRECTORS (LOUDON COUNTY)

Appointee
Jimmy Matlock

Term Expiration
August 31, 2008

NOW, THEREFORE, BE IT RESOLVED that the County Commission in regular session assembled this 5th day of August, 2002, hereby approves and acknowledges (as appropriate), the said appointment(s).


COUNTY CHAIRMAN

ATTEST:

COUNTY CLERK


COUNTY EXECUTIVE

The remaining members and their continuing expiration terms for said board or committee are as follows:

Appointee
Gene Lambert
George Miller

Term Expiration
August 31, 2006
No Expiration

LOUDON COUNTY COMMISSION

RESOLUTION NO. 080502 - B

**RESOLUTION APPROVING OR ACKNOWLEDGING BOARD OR
COMMITTEE APPOINTMENTS BY COUNTY EXECUTIVE**

WHEREAS, by statute and/or intergovernmental agreement and/or County Procedural Regulations, the County Executive has authority to make certain committee and board appointments; and

WHEREAS, an appointment (or appointments) is necessary and/or desirable at this time; and

WHEREAS, the County Executive appoints the following as members of

**LOUDON COUNTY ADULT
ORIENTED BUSINESS BOARD**

<u>Appointee</u>	<u>Expires</u>
Commissioner Bob Franke	August 31, 2006
Commissioner Harold Duff	August 31, 2006
Commissioner Van Shaver	August 31, 2006
Commissioner Chuck Jenkins	August 31, 2006
Commissioner Don Miller	August 31, 2006

NOW, THEREFORE, BE IT RESOLVED that the Loudon County Commission in regular session assembled this 5th day of August, 2002 hereby approves and acknowledges (as appropriate), the said appointment(s).


COUNTY CHAIRMAN

ATTEST:

COUNTY CLERK


COUNTY EXECUTIVE

LOUDON COUNTY COMMISSION

RESOLUTION 080502 - C

**RESOLUTION AUTHORIZING THE LOUDON COUNTY PURCHASING
AGENT TO RE-BID THE HIGHWAY 70 SEWER PROJECT**

WHEREAS, on January 04, 1999, the Loudon County Commission adopted a resolution (Resolution #010499-B) authorizing the Loudon County Executive to apply for the 1999 Community Development Block Grant for funds up to the amount of \$500,000 to extend sewer line service to parts of Highway 70 West, Gentry Drive, Duggan Road, Harmon Lane and surrounding areas of Northern Loudon County; and

WHEREAS, after review by the State of Tennessee, that CDBG grant was awarded to Loudon County; and

WHEREAS, all rights of way were obtained to accommodate said project; and

WHEREAS, the project was approved and went to bid on June 20, 2002; and

WHEREAS, the low bidder is unable to perform the work for this project due to the inability of obtaining the required performance bond; and

WHEREAS, the engineering firm recommends that we proceed immediately to re-bid the project.

NOW, THEREFORE, BE IT RESOLVED, that the Loudon County Commission, meeting in regular session on August 05, 2002, hereby authorizes Howard Luttrell, Loudon County Purchasing Agent, to re-bid this project as soon as possible.


COUNTY CHAIRMAN

ATTEST:

COUNTY CLERK

APPROVED:


COUNTY EXECUTIVE

Resolution 080502-D

A RESOLUTION AMENDING THE ZONING MAP OF LOUDON COUNTY, TENNESSEE, PURSUANT TO CHAPTER FOUR, SECTION 13-7-105 OF THE TENNESSEE CODE ANNOTATED, TO REZONE PROPERTY LOCATED OFF STEEKEE ROAD, SITUATED IN THE FIRST LEGISLATIVE DISTRICT, REFERENCED BY TAX MAP 62, PARCEL 50.00, FROM A-2, RURAL RESIDENTIAL DISTRICT, TO C-2, GENERAL COMMERCIAL DISTRICT.

WHEREAS, the Loudon County Commission, in accordance with Chapter Four, Section 13-7-105 of the Tennessee Code Annotated, may from time to time, amend the number, shape, boundary, area or any regulation of or within any district or districts, or any other provision of any zoning resolution, and

WHEREAS, the Regional Planning Commission has forwarded a recommendation regarding the amendment to the Zoning Map of Loudon County, Tennessee,


WHEREAS, a notice of public hearing and a description of the resolution appeared in the Loudon County News Herald on June 20, 2002, consistent with the provisions of Tennessee Code Annotated, Section 13-7-105,

NOW, THEREFORE, BE IT RESOLVED by the Loudon County Commission that the Zoning Map of Loudon County, Tennessee be amended as follows:

1. That property located off Steekee Road, situated in the First Legislative District, referenced by Tax Map 62, Parcel 50.00, be rezoned from A-2, Rural Residential District, to C-2, General Commercial District, as represented on the attached map; said map being part of this Resolution.

BE IT FINALLY RESOLVED, that this Resolution shall take effect immediately, the public welfare requiring it.

ATTEST

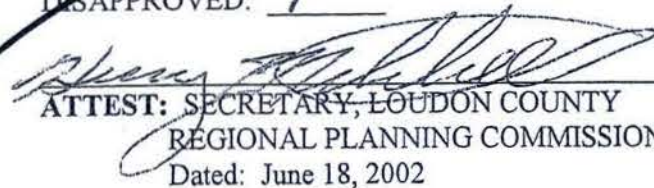

LOUDON COUNTY CHAIRMAN
DATE: _____

APPROVED: LOUDON COUNTY EXECUTIVE

The vote on the question of approval of this Resolution by the Planning Commission is as follows:

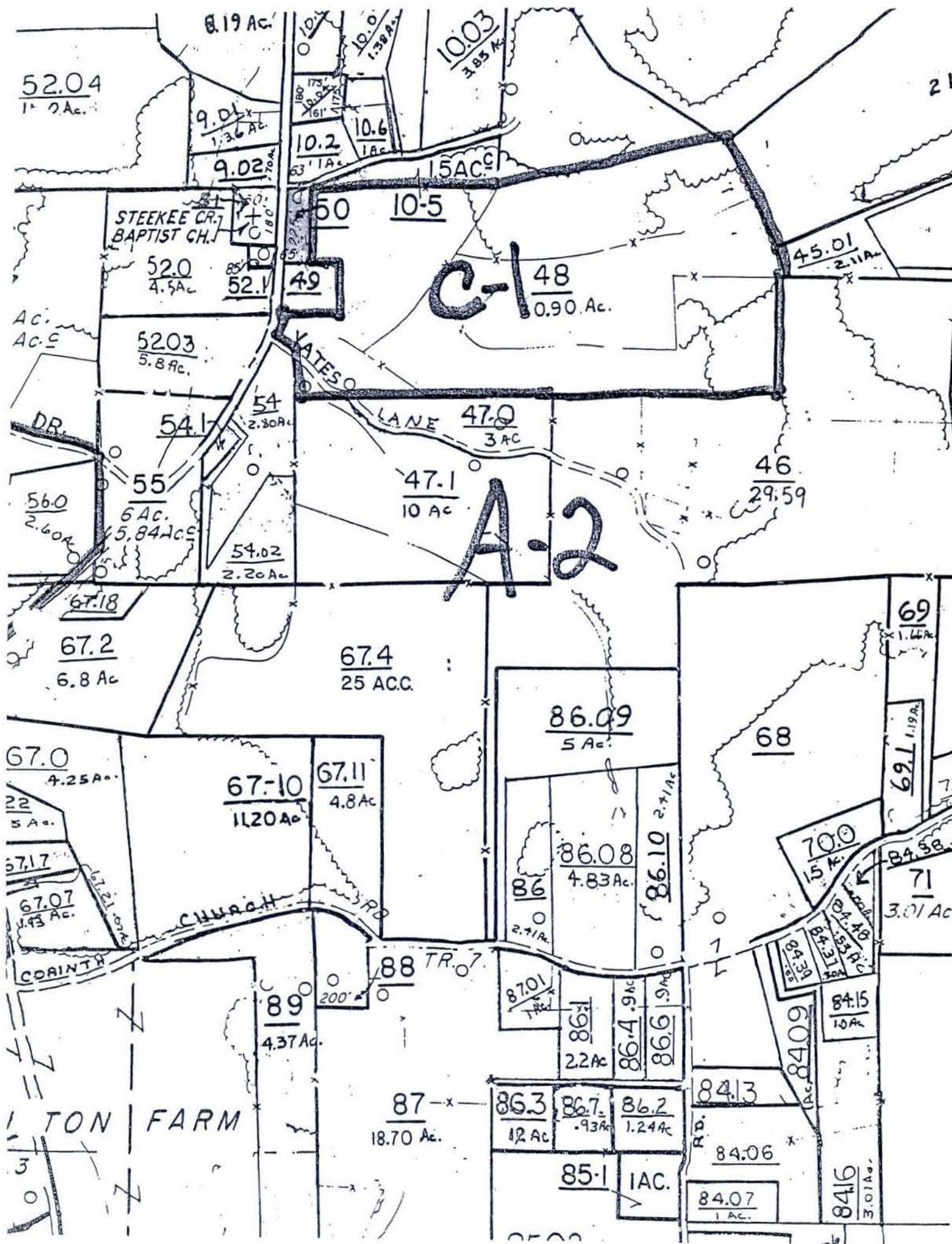
APPROVED: 0

DISAPPROVED: 9

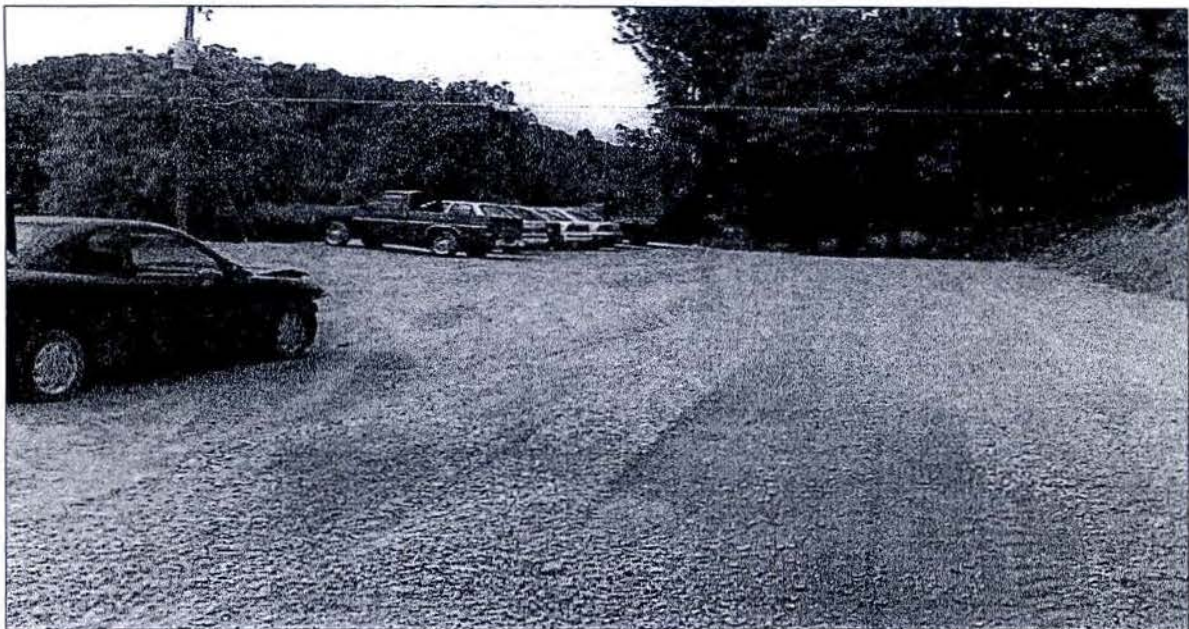

ATTEST: SECRETARY, LOUDON COUNTY
REGIONAL PLANNING COMMISSION
Dated: June 18, 2002

FILE #02-05-94-RZ-CO

Denied



Loudon County Commission Meeting 8-5-02
Rezoning request A-1 to C-2
3435 Steekee Creek Road

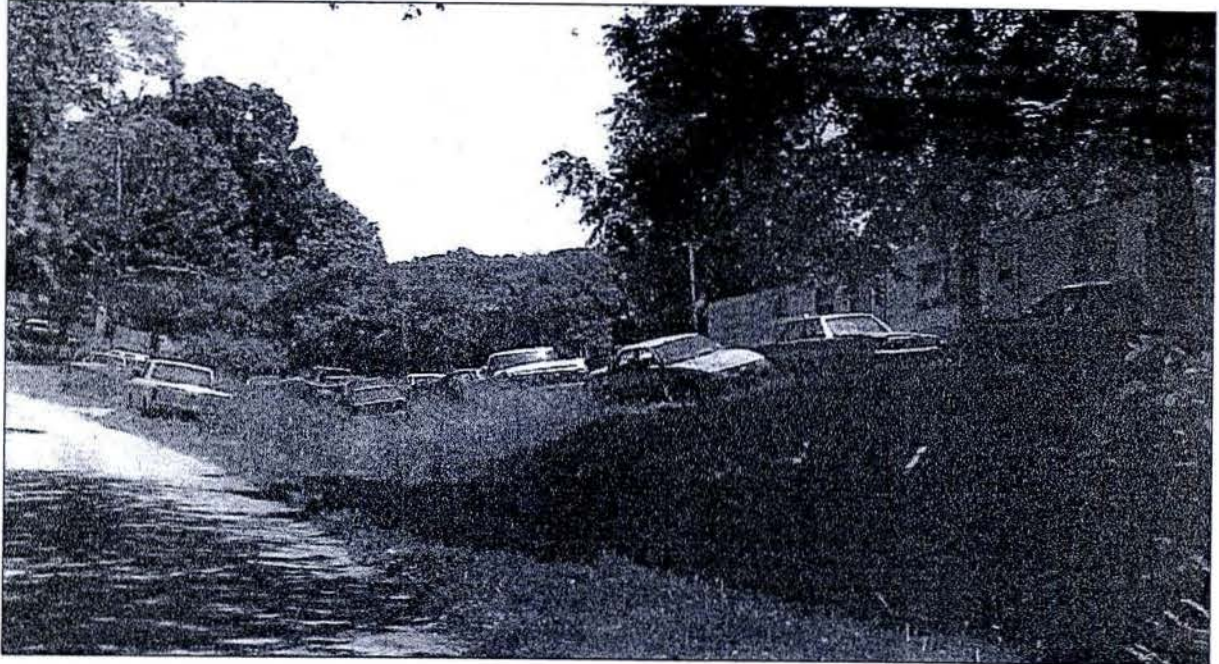


Applicant already has graveled parking lot established.

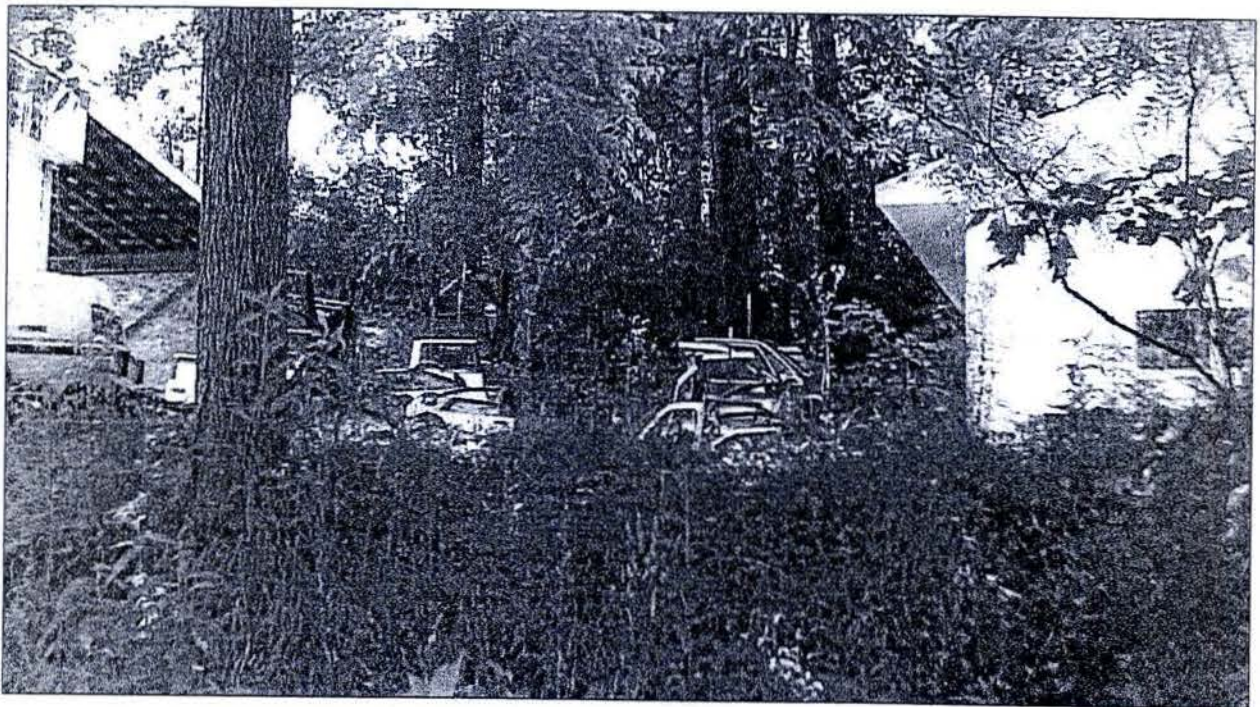


View from Steekee Creek Rd. There is a church directly across the road from this property.

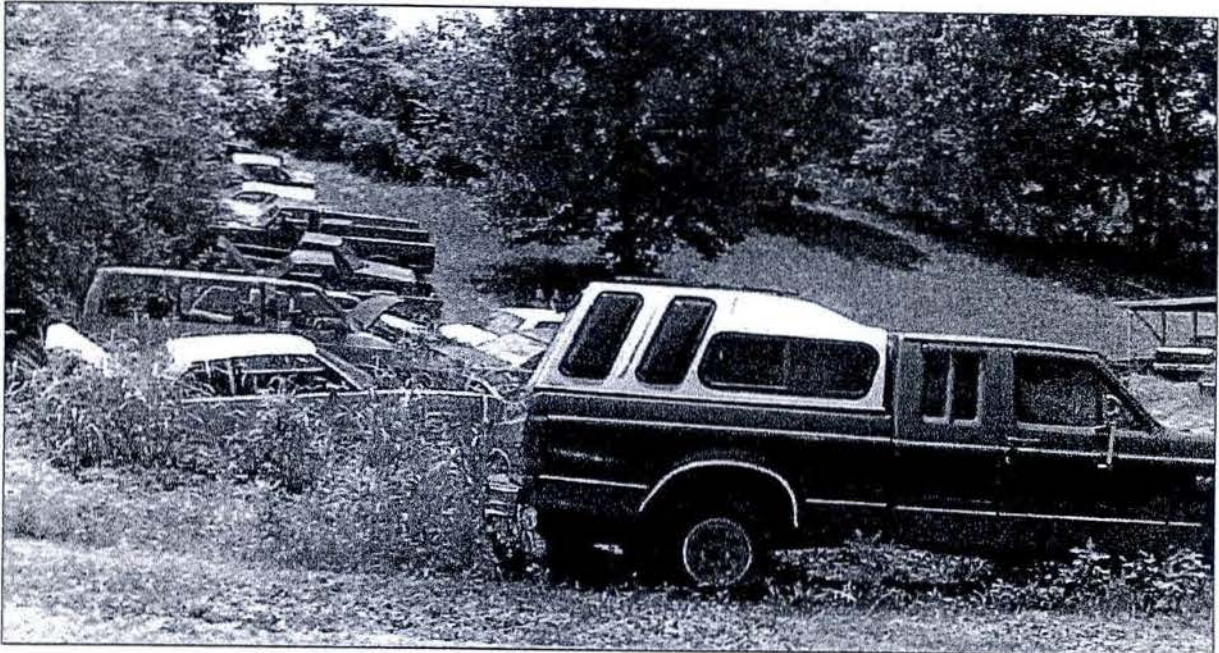
**Loudon County Commission Meeting 8-5-02
Rezoning request Steekee Road.**



Junk vehicles parked on Parcel 48.00 which lies directly behind Parcel 50.00. This property is owned by W.B. Costner and is zoned C-1.



Car doors, etc. stacked up behind trailer.



More junk vehicles on property



Picture of Mr. Costner's gas station/garage taken from corner of Steekee Cr. Rd. and Yates Rd. This is also part of Parcel 48.00. The bus that is circled appears to be full of hub caps and wheels.



Also taken from the corner of Steekee Creek Rd. and Yates Dr. The C-1 zone does not permit junk yards or auto body repair establishments as either a permitted use or special exception use. Vehicle repair is not a permitted use in the C-2 zone, but automotive repair services (body and engine repair) are allowed as a special exception use. Automobile wrecking, salvage, and junkyards are permitted as a special exception use only in the M-1 zone.

Resolution 080502-E

A RESOLUTION AMENDING THE ZONING MAP OF LOUDON COUNTY, TENNESSEE, PURSUANT TO CHAPTER FOUR, SECTION 13-7-105 OF THE TENNESSEE CODE ANNOTATED, TO REZONE 11.5 ACRES OF PROPERTY LOCATED AT THE INTERSECTION OF HIGHWAY 95 NORTH AND UNITIA ROAD, SITUATED IN THE THIRD LEGISLATIVE DISTRICT, REFERENCED BY TAX MAP 47, PARCEL 24.00, FROM C-1, RURAL CENTER DISTRICT, TO R-1 SUBURBAN RESIDENTIAL DISTRICT.

WHEREAS, the Loudon County Commission, in accordance with Chapter Four, Section 13-7-105 of the Tennessee Code Annotated, may from time to time, amend the number, shape, boundary, area or any regulation of or within any district or districts, or any other provision of any zoning resolution, and

WHEREAS, the Regional Planning Commission has forwarded a recommendation regarding the amendment to the Zoning Map of Loudon County, Tennessee,

WHEREAS, a notice of public hearing and a description of the resolution appeared in the Loudon County News Herald on June 2-3, 2002, consistent with the provisions of Tennessee Code Annotated, Section 13-7-105,

NOW, THEREFORE, BE IT RESOLVED by the Loudon County Commission that the Zoning Map of Loudon County, Tennessee be amended as follows:

1. That 11.5 acres of property located at the intersection of Highway 95 North and Unitia Road, situated in the Third Legislative District, referenced by Tax Map 47, Parcel 24.00, be rezoned from C-1, Rural Center District, to R-1, Suburban Residential District, as represented on the attached map; said map being part of this Resolution.

BE IT FINALLY RESOLVED, that this Resolution shall take effect immediately, the public welfare requiring it.

ATTEST

LOUDON COUNTY CHAIRMAN
DATE: _____

APPROVED: LOUDON COUNTY EXECUTIVE

The vote on the question of approval of this Resolution by the Planning Commission is as follows:

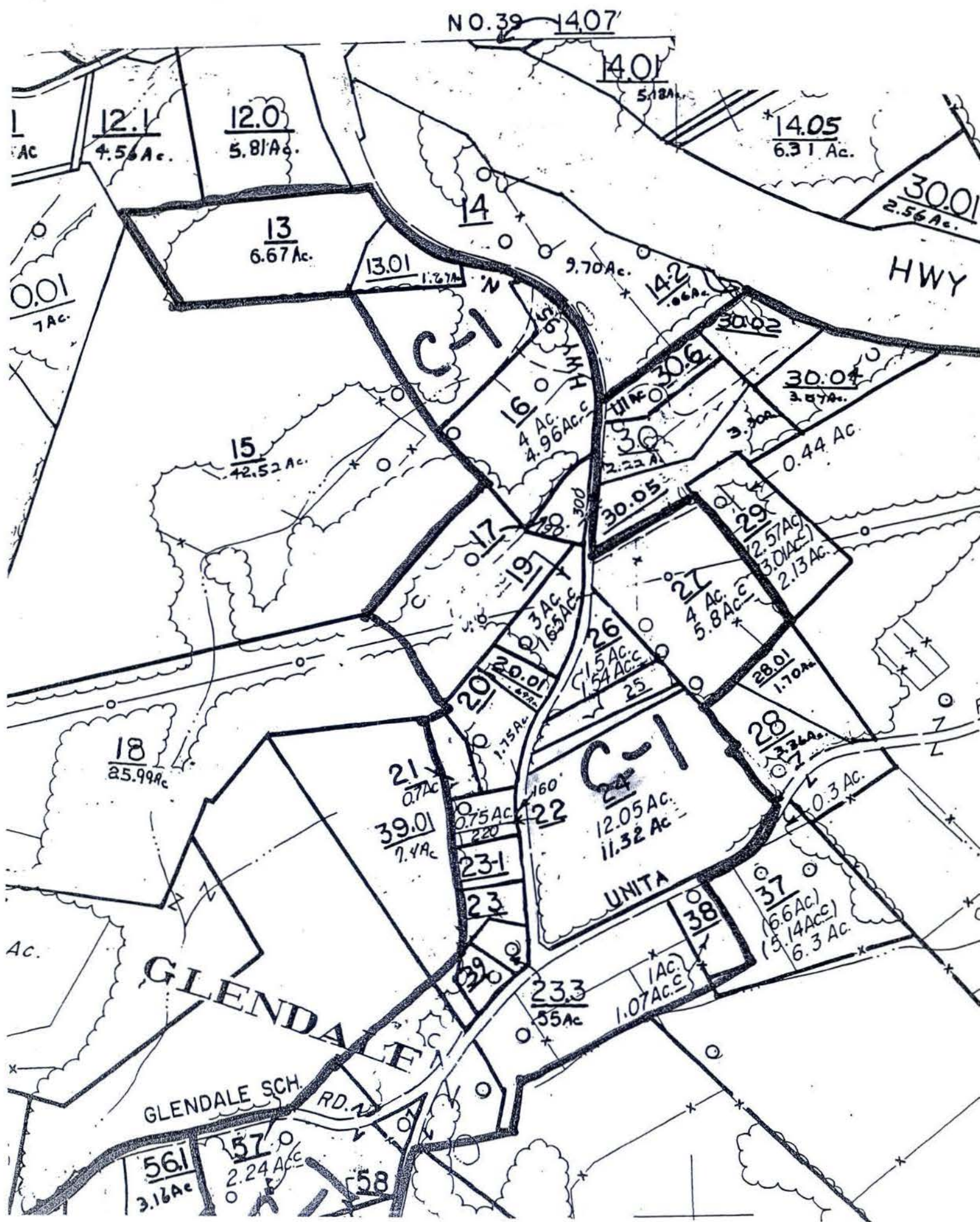
APPROVED: 9

DISAPPROVED: 0

ATTEST: SECRETARY, LOUDON COUNTY
REGIONAL PLANNING COMMISSION
Dated: June 16, 2002

FILE #02-05-109-RZ-CO

Denied



**Loudon County Commission Meeting 8-5-02
Rezoning request C-1 to R-1
Hwy 95 North and Unitia R**



Property sits at the intersection of Hwy 95 and Unitia Rd. It is all wooded area.

Resolution 080502-F

A RESOLUTION AMENDING THE ZONING MAP OF LOUDON COUNTY, TENNESSEE, PURSUANT TO CHAPTER FOUR, SECTION 13-7-105 OF THE TENNESSEE CODE ANNOTATED, TO REZONE PROPERTY LOCATED ON WEBB CIRCLE, SITUATED IN THE SECOND LEGISLATIVE DISTRICT, REFERENCED BY TAX MAP 29J, GROUP A, PARCELS 9.00, 10.00, 11.00 AND 12.00, FROM DISTRICT A-2, RURAL RESIDENTIAL DISTRICT AND C-2, GENERAL COMMERCIAL DISTRICT, TO R-1, SUBURBAN RESIDENTIAL DISTRICT AND O-1, OFFICE PROFESSIONAL DISTRICT.

WHEREAS, the Loudon County Commission, in accordance with Chapter Four, Section 13-7-105 of the Tennessee Code Annotated, may from time to time, amend the number, shape, boundary, area or any regulation of or within any district or districts, or any other provision of any zoning resolution; and

WHEREAS, the Loudon County Regional Planning Commission has forwarded its recommendation regarding the amendment to the Zoning Map of Loudon County, Tennessee; and

WHEREAS, a notice of public hearing and a description of the resolution appeared in the Loudon County News Herald on June 24, 2002, consistent with the provisions of Tennessee Code Annotated, Section 13-7-105,

NOW, THEREFORE, BE IT RESOLVED by the Loudon County Commission that the Zoning Map of Loudon County, Tennessee be amended as follows:

1. That property located on Webb Circle, situated in the Second Legislative District, referenced by Tax Map 29J, Group A, Parcels 9.00, 10.00, 11.00 and 12.00, be rezoned from A-2, Rural Residential District and C-2, General Commercial District, to R-1, Suburban Residential District and O-1, Office Professional District, as represented on the attached map; said map being part of this Resolution.

BE IT FINALLY RESOLVED, that this Resolution shall take effect immediately, the public welfare requiring it.

ATTEST

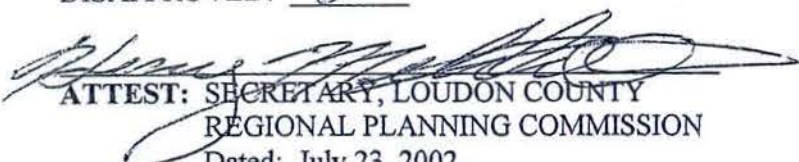

APPROVED: LOUDON COUNTY EXECUTIVE


LOUDON COUNTY CHAIRMAN
DATE: _____

The vote on the question of approval of this Resolution by the Loudon County Planning Commission is as follows:

APPROVED: 8

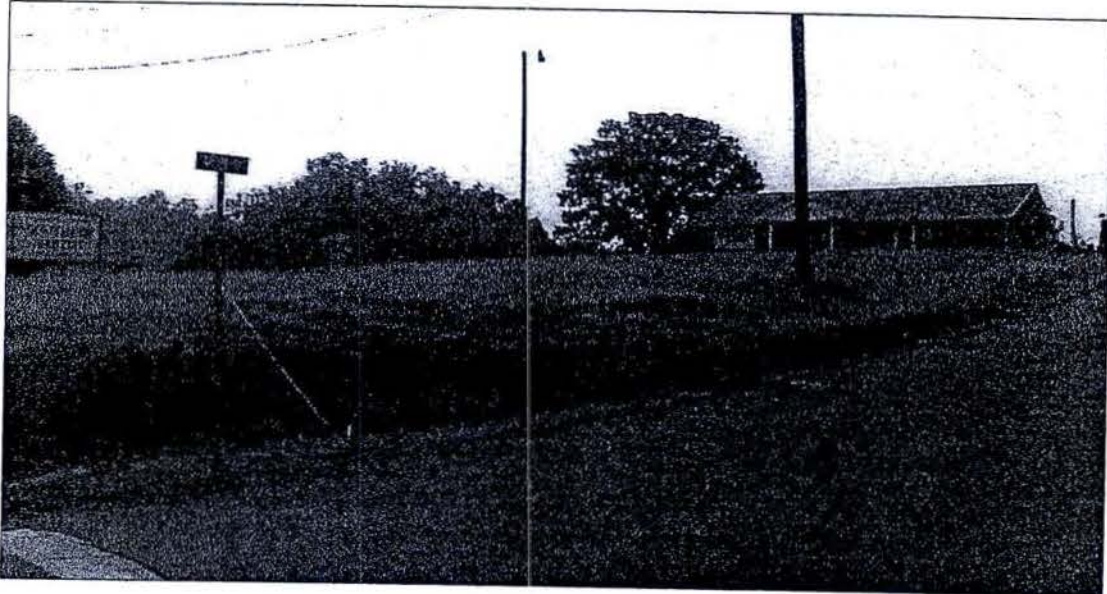
DISAPPROVED: 0


ATTEST: SECRETARY, LOUDON COUNTY
REGIONAL PLANNING COMMISSION
Dated: July 23, 2002

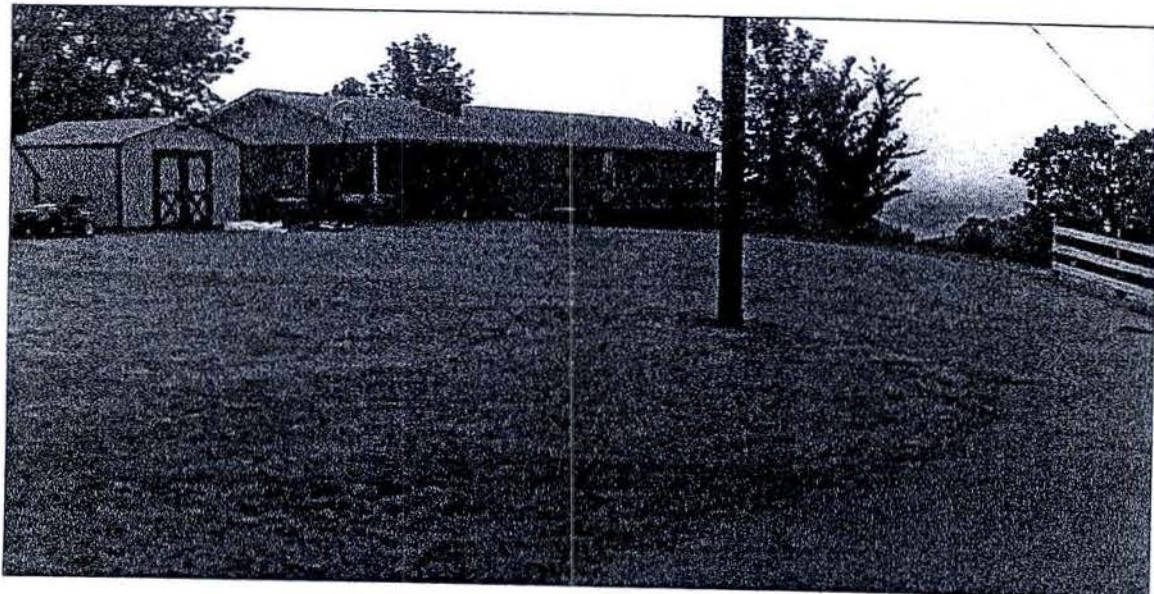
FILE #02-06-133-RZ-CO



Loudon County Commission Meeting 8-5-02
Rezoning request Webb Circle
From A-2 and C-2 to R-1 and O-1



View from corner of Hwy 11 and Webb Circle Dr.
Church office building on top of hill.



View of house that sits at the rear of the property
behind the church building.

**Summary of Financial Statement for Month Ending June 30, 2002
As Compared to June 30, 2001**

UNAUDITED

Fund	Estimated Revenue Received Y-T-D	Estimated Expenditures Y-T-D	Revenue Received June 30, 2001	Expenditures June 30, 2001
County General	\$ 9,000,000	\$ 8,875,000	\$ 8,970,000	\$ 8,400,000
Law Library	\$ 5,000	\$ 13,500	\$ 6,000	\$ 11,400
Recycling/Convenience Center	\$ 440,000	\$ 440,000	\$ 310,000	\$ 281,000
Highway/County Roads	\$ 2,200,000	\$ 2,400,000	\$ 2,103,000	\$ 2,020,000
General Purpose School	\$ 25,000,000	\$ 25,000,000	\$ 25,000,000	\$ 27,152,000
School Federal Projects	\$ 1,250,000	\$ 1,250,000	\$ 1,168,000	\$ 960,000
General Debt Service	\$ 6,500,000	\$ 6,000,000	\$ 2,730,000	\$ 3,012,000
Education Debt Service	\$ 700,000	\$ 700,000	\$ 4,436,000	\$ 226,000
General Capital Projects*	\$ 325,000	\$ 4,000,000	\$ 861,000	\$ 1,180,000
Education Capital Projects	\$ 12,500,000	\$ 6,500,000	\$ 12,008,000	\$ 1,400,000
Lenoir City School (ADA)	\$ 3,290,000	\$ 3,290,000	\$ 3,175,000	\$ 3,120,000

*Includes CJC

RESOLUTION 080502-H

A RESOLUTION OF INTENT BY THE LOUDON COUNTY COMMISSION OF THE COUNTY OF LOUDON TO PARTICIPATE IN AN INTERLOCAL AGREEMENT WITH THE CITY OF LENOIR CITY, TENNESSEE, TO PARTICIPATE AND SUPPORT CERTAIN WATER SYSTEM IMPROVEMENTS TO STIMULATE THE ECONOMIC POTENTIAL OF THE NORTHERN PORTION OF LOUDON COUNTY, TENNESSEE, BY MAKING APPLICATION FOR AVAILABLE GRANT MONEY FOR NORTH LOUDON COUNTY WATER SYSTEM IMPROVEMENTS.

WHEREAS, Loudon County and Lenoir City have adopted a growth management plan that identifies urban growth boundaries, planned growth boundaries and rural areas; and

WHEREAS, Lenoir City's urban growth boundaries include areas contiguous to Highway 70, U.S. 321, and Interstate 75; and

WHEREAS, the projected land use contemplates medium density residential and commercial uses within Loudon County and the City of Lenoir City; and

WHEREAS, certain utilities are necessary to maximize the areas potential for economic growth and increase in public revenues; and

WHEREAS, an adequate public water system (volume and pressure) is essential in order to stimulate residential and commercial growth within the area of concern; and

WHEREAS, Lenoir City Utilities Board has completed an assessment of water system needs that involve the construction of approximately 37,000' of 16" water mains and a 500,000 to 1,000,000 gallon reservoir to adequately serve the long term growth projections with an estimated cost of \$4.5 M; and

WHEREAS, the City and County have successfully engaged in previous interlocal agreements for public infrastructure/facilities for the mutual benefit of the residents of the community and to stimulate sound economic development opportunities.

NOW, THEREFORE, BE IT RESOLVED, that it is the desire of the Loudon County Commission to collaborate by making joint application for any available grant money with the City of Lenoir City in supporting the construction of certain water system improvements in the northern portion of Loudon County, for the purpose of stimulating future economic development of the area. Loudon County does not pledge any financial participation beyond making joint grant application with the City of Lenoir City.

BE IT FURTHER RESOLVED, that upon adoption of this Resolution, Loudon County shall make application with the City of Lenoir City for available grant money for water system improvements in Northern Loudon County.

BE IT FINALLY RESOLVED, that this Resolution shall take effect immediately the public welfare requiring it.

Adopted this the 5th day of August, 2002.


Chairman


County Executive

County Court Clerk

Financial Statement
August
2002

Summary Financial Statement
AUGUST 31, 2002

Fiscal Year Time Lapse: 16.66

101 GENERAL

Account	Description	Budget Estimate	Year-To-Date		Estimate Avg/Mth	AUGUST	
			Actual	Percent Of Budget		Actual	Percent Of Avg
REVENUES							
40110	CURRENT PROPERTY TAX	4,800,000.00	8.91	0.0	400,000.00	0.00	0.0
40120	TRUSTEE'S COLLECTIONS - PRIOR YEAR	150,000.00	40,041.12	26.7	12,500.00	12,404.58	99.2
40130	CIR CLK/CLK & MASTER COLLECTIONS-PR YR	35,000.00	5,146.99	14.7	2,916.67	5,146.99	176.5
40140	INTEREST AND PENALTY	17,000.00	3,093.37	18.2	1,416.67	1,087.00	76.7
40150	PICK-UP TAXES	5,000.00	3,592.85	71.9	416.67	3,467.25	832.1
40220	HOTEL/MOTEL TAX	150,000.00	19,018.37	12.7	12,500.00	19,018.37	152.1
40250	LITIGATION TAX - GENERAL	110,000.00	9,595.69	8.7	9,166.67	9,595.69	104.7
40260	LITIGATION TAX - SPECIAL PURPOSE	60,000.00	4,645.02	7.7	5,000.00	4,645.02	92.9
40270	BUSINESS TAX	42,000.00	3,697.90	8.8	3,500.00	3,697.90	105.7
40320	BANK EXCISE TAX	40,000.00	0.00	0.0	3,333.33	0.00	0.0
40330	WHOLESALE BEER TAX	92,000.00	10,652.40	11.6	7,666.67	10,652.40	138.9
41110	MARRIAGE LICENSES	2,000.00	166.25	8.3	166.67	166.25	99.7
41120	ANIMAL REGISTRATION	15,000.00	2,286.00	15.2	1,250.00	1,163.00	93.0
41140	CABLE TV FRANCHISE	160,000.00	0.00	0.0	13,333.33	0.00	0.0
41510	BEER PERMITS	3,500.00	0.00	0.0	291.67	0.00	0.0
41520	BUILDING PERMITS	40,000.00	10,954.29	27.4	3,333.33	6,950.45	208.5
41590	OTHER PERMITS	20,000.00	3,395.25	17.0	1,666.67	1,755.00	105.3
42310	FINES	90,000.00	8,341.96	9.3	7,500.00	8,341.96	111.2
42320	OFFICERS COSTS	45,000.00	5,583.15	12.4	3,750.00	5,583.15	148.9
42330	GAMES AND FISH FINES	1,100.00	157.50	14.3	91.67	157.50	171.8
42350	JAIL FEES	19,000.00	1,769.37	9.3	1,583.33	1,769.37	111.7
42380	DUI TREATMENT FINES	40,000.00	2,002.12	5.0	3,333.33	2,002.12	60.1
42440	DRUG CONTROL FINES	4,500.00	580.00	12.9	375.00	100.00	26.7
42520	OFFICERS COSTS	4,000.00	409.45	10.2	333.33	409.45	122.8
42810	FINES	12,000.00	793.00	6.6	1,000.00	793.00	79.3
43190	OTHER GENERAL SERVICE CHARGES	1,300.00	7,500.00	576.9	108.33	3,750.00	3461.6
43350	COPY FEES	500.00	0.00	0.0	41.67	0.00	0.0
43370	TELEPHONE COMMISSIONS	6,300.00	0.00	0.0	525.00	0.00	0.0
43380	VENDING MACHINE COLLECTIONS	0.00	42.59	0.0	0.00	0.00	0.0
43392	DATA PROCESSING FEE -REGISTER	27,000.00	2,564.00	9.5	2,250.00	2,564.00	114.0
44110	INVESTMENT INCOME	410,000.00	20,817.07	5.1	34,166.67	21,092.07	61.7
44120	LEASE/RENTALS	120,000.00	13,292.00	11.1	10,000.00	6,646.00	66.5
44131	COMMISSARY SALES	5,500.00	150.11	2.7	458.33	150.11	32.8
44140	SALE OF MAPS	3,000.00	415.50	13.9	250.00	78.00	31.2
44170	MISCELLANEOUS REFUNDS	0.00	482.76	0.0	0.00	461.00	0.0
44520	INSURANCE RECOVERY	5,000.00	0.00	0.0	416.67	0.00	0.0
44540	SALE OF PROPERTY	10,000.00	0.00	0.0	833.33	0.00	0.0
44570	CONTRIBUTIONS & GIFTS	0.00	480.00	0.0	0.00	145.00	0.0
44990	OTHER LOCAL REVENUES	6,500.00	0.00	0.0	541.67	0.00	0.0
45110	COUNTY CLERK	197,000.00	0.00	0.0	16,416.67	0.00	0.0
45510	COUNTY CLERK	0.00	22,525.28	0.0	0.00	22,525.28	0.0
45520	CIRCUIT COURT CLERK	275,000.00	30,125.45	11.0	22,916.67	30,125.45	131.5
45540	GENERAL SESSIONS COURT CLERK	65,000.00	155.00	0.2	5,416.67	155.00	2.9
45550	CLERK AND MASTER	56,000.00	5,246.41	9.4	4,666.67	5,246.41	112.4
45570	PROBATE COURT CLERK	25,000.00	2,106.15	8.4	2,083.33	2,106.15	101.1
45580	REGISTER	265,000.00	33,216.17	12.5	22,083.33	33,216.17	150.4

ACQ795 2002/09/16 12:59:52

LOUDON COUNTY FINANCE

FlexGen4(5.30)

Page: 2

Summary Financial Statement
AUGUST 31, 2002

Fiscal Year Time Lapse: 16.66

101 GENERAL

Account	Description	Year-To-Date			AUGUST		
		Budget Estimate	Actual	Percent Of Budget	Estimate Avg/Mth	Actual	Percent Of Avg
REVENUES							
45590	SHERIFF	13,000.00	720.60-	5.5	1,083.33	720.60-	66.5
45610	TRUSTEE	500,000.00	29,394.79-	5.9	41,666.67	16,170.60-	38.8
46110	JUVENILE SERVICES PROGRAM	15,000.00	0.00	0.0	1,250.00	0.00	0.0
46140	AGING PROGRAMS	15,000.00	4,287.00-	28.6	1,250.00	4,287.00-	343.0
46160	STATE REAPPRAISAL GRANT	15,000.00	4,453.75-	29.7	1,250.00	4,453.75-	356.3
46210	LAW ENFORCEMENT TRAINING PROGRAMS	18,000.00	0.00	0.0	1,500.00	0.00	0.0
46430	LITTER PROGRAM	42,000.00	1,665.00-	4.0	3,500.00	0.00	0.0
46820	INCOME TAX	90,000.00	0.00	0.0	7,500.00	0.00	0.0
46830	BEER TAX	32,000.00	0.00	0.0	2,666.67	0.00	0.0
46850	MIXED DRINK TAX	4,200.00	0.00	0.0	350.00	0.00	0.0
46915	CONTRACTED PRISONER BOARD	130,000.00	0.00	0.0	10,833.33	0.00	0.0
46960	REGISTRAR'S SALARY SUPPLEMENT	18,000.00	0.00	0.0	1,500.00	0.00	0.0
46990	OTHER STATE REVENUES	20,000.00	0.00	0.0	1,666.67	0.00	0.0
47220	CIVIL DEFENSE REIMBURSEMENT	17,000.00	0.00	0.0	1,416.67	0.00	0.0
48110	PRISONER BOARD	20,000.00	0.00	0.0	1,666.67	0.00	0.0
48130	CONTRIBUTIONS	0.00	1,985.75-	0.0	0.00	1,985.75-	0.0
48140	CONTRACTED SERVICES	75,000.00	0.00	0.0	6,250.00	0.00	0.0
Total REVENUES		8,459,400.00	317,538.52-	3.8	704,950.03	254,784.79-	36.1
EXPENDITURES							
51100	COUNTY COMMISSION	128,100.00-	18,276.93	14.3	10,675.00-	5,858.82	54.9
51210	BOARD OF EQUALIZATION	1,800.00-	0.00	0.0	150.00-	0.00	0.0
51220	BEER BOARD	3,000.00-	562.50	18.8	250.00-	562.50	225.0
51300	COUNTY EXECUTIVE	119,924.00-	18,792.35	15.7	9,993.65-	8,996.03	90.0
51400	COUNTY ATTORNEY	90,000.00-	9,132.96	10.1	7,500.00-	3,322.90	44.3
51500	ELECTION COMMISSION (INCLUDING VOTER REG	162,622.00-	49,677.68	30.5	13,551.83-	26,180.12	193.2
51600	REGISTER OF DEEDS	195,050.00-	30,338.16	15.6	16,254.17-	15,233.06	93.7
51710	DEVELOPMENT	51,050.00-	1,178.49	2.3	4,254.17-	1,178.49	27.7
51720	PLANNING	133,940.00-	21,273.11	15.9	11,161.67-	10,761.51	96.4
51730	BUILDING	0.00	748.06	0.0	0.00	336.48	0.0
51740	ENGINEERING	15,000.00-	0.00	0.0	1,250.00-	0.00	0.0
51760	GEOGRAPHICAL INFORMATION SYSTEMS	41,700.00-	15,348.37	36.8	3,475.00-	2,578.87	74.2
51800	COUNTY BUILDINGS	764,562.00-	208,470.79	27.3	63,713.51-	144,910.77	227.4
52100	ACCOUNTING AND BUDGETING	263,090.00-	47,762.96	18.2	21,924.18-	26,089.52	119.0
52200	PURCHASING	88,342.00-	14,268.72	16.2	7,361.83-	7,540.52	102.4
52300	PROPERTY ASSESSOR'S OFFICE	242,255.00-	55,393.72	22.9	20,187.92-	37,385.06	185.2
52400	COUNTY TRUSTEE'S OFFICE	176,178.00-	22,586.82	12.8	14,681.49-	12,311.85	83.9
52500	COUNTY CLERK'S OFFICE	242,674.00-	48,753.23	20.1	20,222.82-	20,916.01	103.4
53100	CIRCUIT COURT	126,971.00-	23,993.70	18.9	10,580.91-	9,510.34	89.9
53300	GENERAL SESSIONS COURT	157,930.00-	31,273.87	19.8	13,160.83-	13,724.20	104.3
53310	GENERAL SESSIONS JUDGE	155,374.00-	23,748.26	15.3	12,947.84-	11,679.77	90.2
53400	CHANCERY COURT	111,166.00-	19,763.05	17.8	9,263.83-	10,074.55	108.8
53500	JUVENILE COURT	269,197.00-	45,311.30	16.8	22,433.09-	22,816.02	101.7
53900	OTHER ADMINISTRATION OF JUSTICE	17,000.00-	3,427.90	20.2	1,416.67-	686.01	48.4

ACQ795 2002/09/16 12:59:52

LOUDON COUNTY FINANCE

FlexGen4(5.30)

Page: 3

Summary Financial Statement
AUGUST 31, 2002

Fiscal Year Time Lapse: 16.66

101 GENERAL

Account	Description	Year-To-Date			AUGUST	
		Budget Estimate	Actual	Percent Of Budget	Estimate Avg/Mth	Actual Percent Of Avg
EXPENDITURES						
54110	SHERIFF'S DEPARTMENT	1,709,321.00-	540,546.40	31.6	142,443.41-	281,797.34 197.8
54120	SPECIAL PATROLS	15,000.00-	51,948.91	346.3	1,250.00-	20,898.21 1671.9
54130	TRAFFIC CONTROL	3,600.00-	335.06	9.3	300.00-	118.84 39.6
54150	DRUG ENFORCEMENT	0.00	13,020.14	0.0	0.00	6,910.06 0.0
54210	JAIL	781,750.00-	117,132.90	15.0	65,145.83-	68,437.41 105.1
54230	CORRECTIONAL INCENTIVE PROGRAM IMPROVEME	0.00	1,638.31	0.0	0.00	0.00 0.0
54410	CIVIL DEFENSE	44,533.00-	12,223.20	27.4	3,711.08-	6,673.99 179.8
54420	RESCUE SQUAD	86,000.00-	0.00	0.0	7,166.67-	0.00 0.0
54510	INSPECTION AND REGULATION	60,700.00-	10,381.30	17.1	5,058.34-	5,693.87 112.6
54610	COUNTY CORONER/MEDICAL EXAMINER	5,000.00-	0.00	0.0	416.67-	0.00 0.0
54900	OTHER PUBLIC SAFETY	469,850.00-	75,092.96	16.0	39,154.17-	39,776.55 101.6
55110	LOCAL HEALTH CENTER	77,421.00-	5,476.42	7.1	6,451.75-	2,504.50 38.8
55120	RABIES AND ANIMAL CONTROL	106,900.00-	15,547.45	14.5	8,908.34-	7,094.65 79.6
55190	OTHER LOCAL HEALTH SERVICES	0.00	11,927.18	0.0	0.00	6,959.60 0.0
55510	GENERAL WELFARE ASSISTANCE	27,500.00-	0.00	0.0	2,291.66-	0.00 0.0
55710	SANITATION MANAGEMENT	42,000.00-	7,002.92	16.7	3,500.00-	3,977.75 113.7
55751	RECYCLING CENTER	385,000.00-	85,000.00	22.1	32,083.33-	40,000.00 124.7
56100	ADULT ACTIVITIES	5,200.00-	0.00	0.0	433.33-	0.00 0.0
56300	SENIOR CITIZENS ASSISTANCE	102,697.00-	17,623.13	17.2	8,558.09-	8,661.15 101.2
56500	LIBRARIES	130,795.00-	21,894.35	16.7	10,899.58-	11,115.80 102.0
57100	AGRICULTURAL EXTENSION SERVICE	107,077.00-	18,643.87	17.4	8,923.09-	18,216.32 204.1
57300	FOREST SERVICE	1,000.00-	0.00	0.0	83.33-	0.00 0.0
57500	SOIL CONSERVATION	10,600.00-	1,641.97	15.5	883.33-	820.59 92.9
57700	FLOOD CONTROL	2,000.00-	2,000.00	100.0	166.67-	2,000.00 1200.0
58110	TOURISM	137,500.00-	14,503.15	10.5	11,458.33-	14,503.15 126.6
58120	INDUSTRIAL DEVELOPMENT	129,722.00-	41,927.00	32.3	10,810.16-	29,852.44 276.2
58300	VETERAN'S SERVICES	9,500.00-	1,459.77	15.4	791.67-	830.77 104.9
58500	CONTRIBUTIONS TO OTHER AGENCIES	57,000.00-	18,500.00	32.5	4,750.00-	18,500.00 389.5
58600	EMPLOYEE BENEFITS	1,219,000.00-	232,185.23	19.0	101,583.33-	123,341.66 121.4
58900	MISCELLANEOUS	321,000.00-	204,402.24	63.7	26,750.00-	2,243.10 8.4
72120	HEALTH SERVICES	0.00	9,687.36	0.0	0.00	5,467.20 0.0
Total EXPENDITURES		9,604,591.00-	2,242,624.15	23.3	800,382.57-	1,119,042.35 139.8
Total GENERAL		1,145,191.00-	1,925,085.63	168.1	95,432.54-	864,257.56 905.6

ACC795 2002/09/16 12:59:52

LOUDON COUNTY FINANCE
Summary Financial Statement
AUGUST 31, 2002

FlexGen4(5.3U) Page: 4

Fiscal Year Time Lapse: 16.66

114 LAW LIBRARY

Account	Description	Year-To-Date			AUGUST		
		Budget Estimate	Actual	Percent Of Budget	Estimate Avg/Mth	Actual	Percent Of Avg
REVENUES							
40130	CIR CLK/CLK & MASTER COLLECTIONS-PR YR	300.00	9.35-	3.1	25.00	9.35-	37.4
42310	FINES	5,700.00	460.27-	8.1	475.00	460.27-	96.9
Total REVENUES		6,000.00	469.62-	7.8	500.00	469.62-	93.9
EXPENDITURES							
56500	LIBRARIES	5,000.00-	5,939.66	118.8	416.67-	5,842.66	1402.2
58900	MISCELLANEOUS	1,000.00-	8.97	0.9	83.33-	4.69	5.6
Total EXPENDITURES		6,000.00-	5,948.63	99.1	500.00-	5,847.35	1169.5
Total LAW LIBRARY		0.00	5,479.01	0.0	0.00	5,377.73	0.0

110 SOLID WASTE/SANITATION

Account	Description	Year-To-Date			AUGUST		
		Budget Estimate	Actual	Percent Of Budget	Estimate Avg/Mth	Actual	Percent Of Avg
REVENUES							
49000	OPERATING TRANSFERS	385,000.00	85,000.00	22.1	32,083.33	40,000.00	124.7
	Total REVENUES	385,000.00	85,000.00	22.1	32,083.33	40,000.00	124.7
EXPENDITURES							
55710	SANITATION MANAGEMENT	264,872.00	27,727.44	10.5	22,072.66	26,402.69	119.6
55720	SANITATION EDUCATION/INFORMATION	120,128.00	24,906.91	20.7	10,010.67	12,725.34	127.1
	Total EXPENDITURES	385,000.00	52,634.35	13.7	32,083.33	39,128.03	122.0
	Total SOLID WASTE/SANITATION	0.00	32,365.65	0.0	0.00	871.97	0.0

ACQ795 2002/09/16 12:59:52

LOUISIANA COUNTY FINANCE

FlexGen4(5.30) Pages 6

Summary Financial Statement
AUGUST 31, 2002

Fiscal Year Time Lapse: 16.66

119 INDUSTRIAL/ECONOMIC DEVELOPMENT

Account	Description	Year-To-Date			AUGUST		
		Budget Estimate	Actual	Percent Of Budget	Estimate Avg/Mth	Actual	Percent Of Avg
REVENUES							
44120	LEASE/RENTALS	0.00	409.80-	0.0	0.00	409.80-	0.0
	Total REVENUES	0.00	409.80-	0.0	0.00	409.80-	0.0
EXPENDITURES							
58900	MISCELLANEOUS	0.00	14.10	0.0	0.00	14.10	0.0
	Total EXPENDITURES	0.00	14.10	0.0	0.00	14.10	0.0
	Total INDUSTRIAL/ECONOMIC DEVELOPMENT	0.00	395.70-	0.0	0.00	395.70-	0.0

Summary Financial Statement
AUGUST 31, 2002

Fiscal Year Time Lapse: 16.66

102 DRUG CONTROL

Account	Description	Year-To-Date			AUGUST		
		Budget Estimate	Actual	Percent Of Budget	Estimate Avg/Mth	Actual	Percent Of Avg
REVENUES							
42340	DRUG CONTROL FINES	0.00	7,064.85-	0.0	0.00	7,064.85-	0.0
44570	CONTRIBUTIONS & GIFTS	0.00	6,235.00-	0.0	0.00	749.00-	0.0
45570	PROBATE COURT CLERK	50,000.00	0.00	0.0	4,166.67	0.00	0.0
Total REVENUES		50,000.00	13,299.85-	26.6	4,166.67	7,813.85-	187.5
EXPENDITURES							
54110	SHERIFF'S DEPARTMENT	9,000.00-	7,157.12	79.5	750.00-	7,157.12	954.3
55170	ALCOHOL AND DRUG PROGRAMS	39,400.00-	10,990.90	27.9	3,283.33-	8,965.47	212.1
56900	MISCELLANEOUS	1,600.00-	109.34	6.8	133.33-	70.66	53.0
Total EXPENDITURES		50,000.00-	18,257.36	36.5	4,166.66-	14,193.25	340.6
Total DRUG CONTROL		0.00	4,957.51	0.0	0.01	6,379.40	4000.0

Summary Financial Statement
AUGUST 31, 2002

Fiscal Year Time Lapse: 16.66

131 HIGHWAY/PUBLIC WORKS

Account	Description	Year-To-Date			AUGUST		
		Budget Estimate	Actual	Percent Of Budget	Estimate Avg/Mth	Actual	Percent Of Avg
REVENUES							
40110	CURRENT PROPERTY TAX	270,000.00	0.44	0.0	22,500.00	0.00	0.0
40120	TRUSTEE'S COLLECTIONS - PRIOR YEAR	6,500.00	1,968.99	30.3	541.67	609.90	112.6
40130	CIR CLK/CLK & MASTER COLLECTIONS-PR YR	3,000.00	294.11	9.8	250.00	294.11	117.6
40140	INTEREST AND PENALTY	1,300.00	152.15	11.7	108.33	53.39	49.3
40220	HOTEL/MOTEL TAX	65,000.00	7,924.31	12.2	5,416.57	7,924.31	146.3
40270	BUSINESS TAX	4,500.00	280.83	6.2	375.00	280.83	74.9
40280	MINERAL SEVERANCE TAX	53,000.00	0.00	0.0	4,416.67	0.00	0.0
40320	BANK EXCISE TAX	3,000.00	0.00	0.0	250.00	0.00	0.0
44130	SALE OF MATERIALS AND SUPPLIES	20,000.00	1,036.33	5.2	1,666.67	465.85	28.0
44170	MISCELLANEOUS REFUNDS	500.00	0.00	0.0	41.67	0.00	0.0
46410	BRIDGE PROGRAM	91,000.00	0.00	0.0	7,583.33	0.00	0.0
46420	STATE AID PROGRAM	177,000.00	0.00	0.0	14,750.00	0.00	0.0
46920	GASOLINE AND MOTOR FUEL TAX	1,554,000.00	129,327.16	8.3	129,500.00	129,327.16	99.9
46930	PETROLEUM SPECIAL TAX	31,300.00	2,621.52	8.4	2,608.33	2,621.52	100.5
47230	DISASTER RELIEF	0.00	18,788.90	0.0	0.00	18,788.90	0.0
Total REVENUES		2,280,100.00	162,393.86	7.1	190,008.34	160,366.03	84.4
EXPENDITURES							
61000	ADMINISTRATION	545,970.00	90,855.00	16.6	45,497.49	43,411.84	95.4
62000	HIGHWAY AND BRIDGE MAINTENANCE	594,164.00	333,662.28	56.2	49,513.67	108,058.80	218.2
63100	OPERATION AND MAINTENANCE OF EQUIPMENT	158,850.00	61,338.26	38.6	13,237.50	1,447.91	10.9
65000	OTHER CHARGES	93,160.00	47,907.54	51.4	7,763.33	2,348.92	30.3
66000	EMPLOYEE BENEFITS	239,000.00	63,289.24	26.5	19,916.66	6,087.00	30.6
68000	CAPITAL OUTLAY	403,000.00	187,100.00	46.4	33,583.33	187,100.00	557.1
81200	HIGHWAY & STREET DEBT SERVICE	245,956.00	20,496.25	8.3	20,496.33	0.00	0.0
Total EXPENDITURES		2,280,100.00	804,649.37	35.3	190,008.31	348,454.47	183.4
Total HIGHWAY/PUBLIC WORKS		0.00	642,255.51	0.0	0.03	188,088.44	1466.7

Summary Financial Statement
AUGUST 31, 2002

Fiscal Year Time Lapse: 16.66

141 GENERAL PURPOSE SCHOOL

Account	Description	Year-To-Date			AUGUST	
		Budget Estimate	Actual	Percent Of Budget	Estimate Avg/Mth	Actual Percent Of Avg
REVENUES						
40110	CURRENT PROPERTY TAX	5,300,000.00	9.26	0.0	441,666.67	0.00 0.0
40120	TRUSTEE'S COLLECTIONS - PRIOR YEAR	100,000.00	41,602.56	41.6	8,333.33	12,888.27 154.7
40130	CIR CLK/CLK & MASTER COLLECTIONS-PR YR	43,000.00	5,478.76	12.7	3,593.33	5,478.76 152.9
40140	INTEREST AND PENALTY	22,000.00	3,213.92	14.6	1,833.33	1,129.30 61.6
40163	PAYMENTS IN LIEU OF TAXES - OTHER	11,500.00	0.00	0.0	958.33	0.00 0.0
40210	LOCAL OPTION SALES TAX	2,500,000.00	223,950.26	9.0	200,333.33	223,950.26 107.5
40270	BUSINESS TAX	50,000.00	4,526.55	9.1	4,166.67	4,526.55 108.6
40320	BANK EXCISE TAX	50,000.00	0.00	0.0	4,166.67	0.00 0.0
40350	INTERSTATE TELECOMMUNICATIONS TAX	0.00	590.50	0.0	0.00	590.50 0.0
40570	RECEIPTS FROM INDIVIDUAL SCHOOLS	737,050.00	0.00	0.0	61,420.83	0.00 0.0
44110	INVESTMENT INCOME	7,000.00	0.00	0.0	583.33	0.00 0.0
44170	MISCELLANEOUS REFUNDS	125,000.00	18,142.23	14.5	10,416.67	4,958.23 47.6
46511	BASIC EDUCATION PROGRAM	13,900,000.00	1,424,900.00	10.3	1,158,333.33	1,424,900.00 123.0
46520	SCHOOL FOOD SERVICE	28,000.00	0.00	0.0	2,333.33	0.00 0.0
46550	DRIVER EDUCATION	6,000.00	0.00	0.0	500.00	0.00 0.0
46590	OTHER STATE EDUCATION FUNDS	54,000.00	1,286.52	2.7	4,500.00	1,286.52 44.1
46610	CAREER LADDER PROGRAM	409,000.00	0.00	0.0	34,083.33	0.00 0.0
46612	CAREER LADDER - EXTENDED CONTRACT	247,000.00	0.00	0.0	20,583.33	0.00 0.0
46820	INCOME TAX	60,000.00	0.00	0.0	5,000.00	0.00 0.0
46830	BEER TAX	24,000.00	5,611.31	23.4	2,000.00	5,611.31 280.6
46850	MIXED DRINK TAX	4,000.00	892.09	22.3	333.33	892.09 267.6
46851	STATE REVENUE SHARING -T.V.A.	700,000.00	3,541.30	0.5	65,000.00	1,770.65 2.7
46980	OTHER STATE GRANTS	0.00	6,000.00	0.0	0.00	6,000.00 0.0
47111	USDA SCHOOL LUNCH PROGRAM	400,000.00	0.00	0.0	40,000.00	0.00 0.0
47113	BREAKFAST	200,000.00	0.00	0.0	16,666.67	0.00 0.0
47114	USDA - OTHER	1,500.00	0.00	0.0	125.00	0.00 0.0
47590	OTHER FEDERAL THROUGH STATE	0.00	2,972.76	0.0	0.00	2,972.76 0.0
47640	ROTC REIMBURSEMENT	42,000.00	0.00	0.0	3,500.00	0.00 0.0
Total REVENUES		25,181,050.00	1,743,406.57	6.9	2,008,420.81	1,697,662.26 80.0
EXPENDITURES						
71100	REGULAR INSTRUCTION PROGRAM	13,781,910.00	1,068,464.50	7.8	1,148,492.42	248,934.86 21.7
71200	SPECIAL EDUCATION PROGRAM	1,370,470.00	28,214.81	2.1	114,205.82	14,900.06 13.0
71300	VOCATIONAL EDUCATION PROGRAM	1,234,500.00	59,690.48	4.8	102,875.00	19,866.95 19.3
72110	ATTENDANCE	65,380.00	2,718.40	4.9	5,448.33	4,805.27 24.2
72120	HEALTH SERVICES	56,530.00	3,820.40	6.8	4,710.82	3,727.90 78.1
72130	OTHER STUDENT SUPPORT	568,650.00	20,999.60	3.7	47,387.51	9,476.80 20.0
72210	REGULAR INSTRUCTION PROGRAM	1,247,594.00	147,207.71	11.8	103,966.16	31,025.48 29.8
72220	SPECIAL EDUCATION PROGRAM	323,170.00	17,625.88	5.5	26,930.83	7,702.94 28.6
72230	VOCATIONAL EDUCATION PROGRAM	28,730.00	811.30	2.8	2,394.15	496.65 20.7
72290	OTHER PROGRAMS	0.00	4,745.49	0.0	0.00	627.64 0.0
72310	BOARD OF EDUCATION	409,265.00	185,226.96	45.3	34,105.44	12,490.16 36.6
72320	OFFICE OF THE SUPERINTENDENT	218,000.00	27,835.45	13.3	18,166.65	16,427.21 90.4
72410	OFFICE OF THE PRINCIPAL	333,230.00	156,301.55	46.9	69,435.83	55,230.21 81.0

AC0795 2002/09/16 12:59:52

LOUDON COUNTY FINANCE

FlexGen4 (5.30) Page: 10

Summary Financial Statement
AUGUST 31, 2002

Fiscal Year Time Lapse: 16.66

141 GENERAL PURPOSE SCHOOL

Account	Description	Year To Date			AUGUST	
		Budget Estimate	Actual	Percent Of Budget	Estimate Avg/Mth	Actual Percent Of Avg
EXPENDITURES						
72510	FISCAL SERVICES	65,670.00-	11,333.00	17.3	5,472.50-	5,916.53 108.1
72610	OPERATION OF PLANT	1,623,640.00-	437,108.37	26.9	135,303.34-	123,073.81 135.9
72620	MAINTENANCE OF PLANT	220,000.00-	69,681.95	31.7	18,333.33-	45,314.84 247.2
72710	TRANSPORTATION	1,016,000.00-	34,305.82	3.4	84,666.67-	1,305.89 1.5
73100	FOOD SERVICE	1,497,755.00-	27,388.66	1.8	124,812.92-	13,603.65 10.9
73300	COMMUNITY SERVICES	75,520.00-	12,759.84	16.9	6,293.31-	6,494.69 103.2
76100	REGULAR CAPITAL OUTLAY	50,000.00-	8,068.05	14.8	5,000.00-	6,478.05 129.6
81300	EDUCATION DEBT SERVICE	461,000.00-	0.00	0.0	38,416.67-	0.00 0.0
Total EXPENDITURES		25,157,014.00	2,333,283.21	9.3	2,096,417.77-	689,699.69 32.9
Total GENERAL PURPOSE SCHOOL		24,036.00	589,876.74	2454.1	2,003.04	1,007,962.57 321.6

Summary Financial Statement
AUGUST 31, 2002

Fiscal Year Time Lapse: 10.66

140 SCHOOL FEDERAL PROJECTS

Account	Description	Year To Date		Percent Of Budget	AUGUST		
		Budget Estimate	Actual		Estimate Avg/Mth	Actual	Percent Of Avg
REVENUES							
47131	VOCATIONAL EDUC - BASIC GRANTS TO STATES	87,278.00	0.00	0.0	7,273.17	0.00	0.0
47141	TITLE I GRANTS TO LOCAL EDUC AGENCIES	526,398.00	36,041.50	6.8	43,865.84	36,000.00	82.1
47142	INNOVATIVE EDUC PROGRAM STRATEGIES	30,445.00	124,539.00	409.1	2,537.08	0.00	0.0
47143	SPECIAL EDUCATION - GRANTS TO STATES	596,888.00	0.00	0.0	49,740.67	0.00	0.0
47145	SPECIAL EDUCATION PRESCHOOL GRANTS	15,945.00	0.00	0.0	1,328.75	0.00	0.0
47189	EISENHOWER PROF DEVELOPMENT STATE GRANTS	210,837.00	12,207.00	5.8	17,569.75	0.00	0.0
47500	OTHER FEDERAL THROUGH STATE	21,941.00	13,184.00	60.1	1,838.42	0.00	0.0
Total REVENUES		1,482,724.00	185,971.50	12.5	124,143.68	36,000.00	29.0
EXPENDITURES							
71100	REGULAR INSTRUCTION PROGRAM	632,645.00	7,456.34	1.2	52,720.44	4,054.52	7.7
71200	SPECIAL EDUCATION PROGRAM	548,819.00	6,796.84	1.2	45,734.92	3,396.49	7.4
71300	VOCATIONAL EDUCATION PROGRAM	75,178.00	0.00	0.0	6,264.83	0.00	0.0
72130	OTHER STUDENT SUPPORT	9,100.00	0.00	0.0	758.33	0.00	0.0
72210	ESEA TITLE I (FY 2001-02)	156,968.00	12,353.46	7.9	13,080.67	6,154.04	47.0
72220	SPECIAL EDUCATION PROGRAM	30,000.00	25.00	0.0	2,500.00	25.00	3.8
72230	VOCATIONAL EDUCATION PROGRAM	3,000.00	0.00	0.0	250.00	0.00	0.0
72710	TRANSPORTATION	34,014.00	0.00	0.0	2,834.50	0.00	0.0
Total EXPENDITURES		1,482,724.00	26,701.64	1.8	124,143.67	13,700.05	11.0
Total SCHOOL FEDERAL PROJECTS		0.00	159,269.86	0.0	0.01	22,299.75	9500.0

AC0795 2002/09/16 12:59:52

LOUDON COUNTY FINANCE

FlexGen4(5.30) Page: 12

Summary Financial Statement
AUGUST 31, 2002

Fiscal Year Time Lapse: 16.66

151 GENERAL DEBT SERVICE

Account	Description	Budget Estimate	Year To-Date Actual	Percent Of Budget	Estimate Avg/Mth	AUGUST Actual	Percent Of Avg
REVENUES							
40110	CURRENT PROPERTY TAX	1,400,000.00	3.07	0.0	123,333.33	0.00	0.0
40120	TRUSTEE'S COLLECTIONS - PRIOR YEAR	20,000.00	13,784.48	68.9	1,666.67	4,270.36	256.2
40130	CIR CLK/CLK & MASTER COLLECTIONS-PR YR	12,000.00	1,691.15	14.1	1,390.00	1,691.15	102.1
40140	INTEREST AND PENALTY	5,000.00	1,065.19	21.3	500.00	374.24	74.8
40163	PAYMENTS IN LIEU OF TAXES - OTHER	0.00	11.01	0.0	0.00	0.00	0.0
40210	LOCAL OPTION SALES TAX	200,000.00	17,473.20	8.7	16,666.67	17,473.20	104.8
40220	HOTEL/MOTEL TAX	25,000.00	4,754.64	19.0	5,416.67	4,754.64	87.8
40270	BUSINESS TAX	0.00	3,809.28	0.0	0.00	3,809.28	0.0
40320	BANK EXCISE TAX	17,000.00	0.00	0.0	1,416.67	0.00	0.0
40300	OPERATING TRANSFERS	0.00	20,496.25	0.0	0.00	0.00	0.0
Total REVENUES		1,600,000.00	63,682.13	3.9	150,000.01	32,372.87	21.6
EXPENDITURES							
50900	MISCELLANEOUS	25,000.00	1,116.75	4.5	2,083.33	441.53	21.2
61100	GENERAL GOVERNMENT DEBT SERVICE	1,475,000.00	113,301.30	7.7	122,916.67	105,921.69	86.2
Total EXPENDITURES		1,500,000.00	114,418.05	7.6	125,000.00	106,363.22	85.1
Total GENERAL DEBT SERVICE		300,000.00	51,335.32	17.1	25,000.01	73,990.35	296.0

ACQ795 2002/09/16 12:59:52

LOUDON COUNTY FINANCE

FlexGen4(5.3U) Page: 13

Summary Financial Statement
AUGUST 31, 2002

Fiscal Year Time Lapsed: 16.66

150 EDUCATION DEBT SERVICE

Account	Description	Year-To-Date			AUGUST		
		Budget Estimate	Actual	Percent Of Budget	Estimate Avg/Mth	Actual	Percent Of Avg
REVENUES							
40110	CURRENT PROPERTY TAX	115,000.00	0.00	0.0	9,583.33	0.00	0.0
40120	TRUSTEE'S COLLECTIONS - PRIOR YEAR	4,000.00	1,140.02	28.5	332.33	341.33	102.4
40130	CIR CLK/CLK & MASTER COLLECTIONS-PR YR	700.00	66.93	9.6	58.33	66.93	114.7
40140	INTEREST AND PENALTY	2,000.00	87.90	4.4	166.67	30.25	18.1
40270	BUSINESS TAX	20,000.00	1,401.03	7.0	1,666.67	1,401.03	84.1
40320	BANK EXCISE TAX	1,500.00	0.00	0.0	125.00	0.00	0.0
44110	INVESTMENT INCOME	355,800.00	0.00	0.0	29,733.33	0.00	0.0
Total REVENUES		500,000.00	2,695.03	0.5	41,666.66	1,839.00	4.4
EXPENDITURES							
50900	MISCELLANEOUS	3,000.00	90.10	3.0	250.00	21.96	8.8
81100	GENERAL GOVERNMENT DEBT SERVICE	797,000.00	0.00	0.0	66,416.67	0.00	0.0
81300	EDUCATION DEBT SERVICE	0.00	13,781.25	0.0	0.00	13,781.25	0.0
Total EXPENDITURES		800,000.00	13,871.35	1.7	66,666.67	13,803.21	20.7
Total EDUCATION DEBT SERVICE		300,000.00	11,175.47	3.7	25,000.01	11,962.61	47.9

Summary Financial Statement
AUGUST 31, 2002

Fiscal Year Time Lapse: 10.00

171 GENERAL CAPITAL PROJECTS

		Year-To-Date			AUGUST		
Account	Description	Budget Estimate	Actual	Percent Of Budget	Estimate Avg/Mth	Actual	Percent Of Avg
REVENUES							
40110	CURRENT PROPERTY TAX	330,000.00	0.44	0.0	27,500.00	0.00	0.0
40120	TRUSTEE'S COLLECTIONS - PRIOR YEAR	8,000.00	1,908.98	24.0	566.67	609.95	21.5
40130	CIR CLK/CLK & MASTER COLLECTIONS-PR YR	3,500.00	367.64	10.5	291.67	367.64	126.0
40140	INTEREST AND PENALTY	1,500.00	152.13	10.1	125.00	53.33	42.7
40320	BANK EXCISE TAX	3,700.00	0.00	0.0	308.33	0.00	0.0
44514	REVENUE FROM JOINT VENTURES (GOVT FUNDS)	2,000,000.00	0.00	0.0	166,666.67	0.00	0.0
44570	CONTRIBUTIONS & GIFTS	0.00	135.00	0.0	0.00	97.50	0.0
46290	OTHER PUBLIC SAFETY GRANTS	50,000.00	0.00	0.0	4,166.67	0.00	0.0
46440	TENNESSEE INDUSTRIAL INFRASTRUCTURE PROG	0.00	66,985.96	0.0	0.00	66,985.96	0.0
46490	OTHER PUBLIC WORKS GRANTS	0.00	105,620.37	0.0	0.00	105,620.37	0.0
47170	APPALACHIAN REGIONAL COMMISSION	500,000.00	0.00	0.0	41,666.67	0.00	0.0
47180	COMMUNITY DEVELOPMENT	0.00	12,000.00	0.0	0.00	12,000.00	0.0
Total REVENUES		2,896,700.00	187,229.64	6.5	241,391.66	105,734.91	76.9
EXPENDITURES							
51300	COUNTY EXECUTIVE	0.00	21,450.00	0.0	0.00	21,450.00	0.0
52300	PROPERTY ASSESSOR'S OFFICE	0.00	22,770.00	0.0	0.00	0.00	0.0
53500	JUVENILE COURT	0.00	21,450.00	0.0	0.00	0.00	0.0
54210	JAIL	2,352,398.00	11,720.29	0.5	196,533.16	10,457.99	5.3
54710	PUBLIC SAFETY GRANTS PROGRAM	67,667.00	1,277.33	1.9	5,638.92	1,277.33	22.7
58190	OTHER ECONOMIC AND COMMUNITY DEVELOPMENT	0.00	385,859.50	0.0	0.00	30,150.00	0.0
58900	MISCELLANEOUS	5,000.00	50.01	1.0	416.67	16.97	4.1
91170	PUBLIC UTILITY PROJECTS	667,400.00	28,894.24	4.3	55,616.66	28,894.24	52.0
91190	OTHER GENERAL GOVERNMENT PROJECTS	401,535.00	26,341.37	6.6	33,461.25	26,341.37	78.7
Total EXPENDITURES		3,500,000.00	519,813.54	14.9	291,666.66	168,587.90	57.8
Total GENERAL CAPITAL PROJECTS		603,300.00	332,583.90	55.1	50,274.90	17,146.91	34.1

AC0755 2002/09/16 12:59:52

LOUDON COUNTY FINANCE

FlexSer4(5.3U) Page: 15

Summary Financial Statement
AUGUST 31, 2002

Fiscal Year Time Lapse: 10.00

172 COMMUNITY DEVELOPMENT/INDUSTRIAL PARK

Account	Description	Year-To-Date			AUGUST	
		Budget Estimate	Actual	Percent Of Budget	Estimate Avg/Mth	Actual Percent Of Avg
EXPENDITURES						
50190	OTHER ECONOMIC AND COMMUNITY DEVELOPMENT	0.00	146,998.00	0.0	0.00	0.00 0.0
Total EXPENDITURES		0.00	146,998.00	0.0	0.00	0.00 0.0
Total COMMUNITY DEVELOPMENT/INDUSTRIAL PARK		0.00	146,998.00	0.0	0.00	0.00 0.0

AC0795 2002/09/16 12:59:52

LOUDON COUNTY FINANCE

FlowGen445.DOC Page: 16

Summary Financial Statement
AUGUST 31, 2002

Fiscal Year Time Lapse: 16.65

177 EDUCATION CAPITAL PROJECTS

Account	Description	Year-To-Date			AUGUST		
		Budget Estimate	Actual	Percent Of Budget	Estimate Avg/Mth	Actual	Percent Of Avg
REVENUES							
44110	INVESTMENT INCOME	0.00	9,410.13	0.0	0.00	9,410.13	0.0
	Total REVENUES	0.00	9,410.13	0.0	0.00	9,410.13	0.0
EXPENDITURES							
01300	EDUCATION CAPITAL PROJECTS	0.00	1,295,057.19	0.0	0.00	1,271,407.19	0.0
	Total EXPENDITURES	0.00	1,295,057.19	0.0	0.00	1,271,407.19	0.0
	Total EDUCATION CAPITAL PROJECTS	0.00	1,285,647.06	0.0	0.00	1,261,997.06	0.0

Summary Financial Statement
AUGUST 31, 2002

Fiscal Year Time Lapse: 16.66

207 SOLID WASTE DISPOSAL

Account	Description	Year-To-Date			AUGUST		
		Budget Estimate	Actual	Percent Of Budget	Estimate Avg/Mth	Actual	Percent Of Avg
REVENUES							
43114	SOLID WASTE DISPOSAL FEE	0.00	115,190.33-	0.0	0.00	112,500.98-	0.0
44110	INVESTMENT INCOME	0.00	2,891.92-	0.0	0.00	2,616.92-	0.0
Total REVENUES		0.00	118,082.25-	0.0	0.00	115,117.90-	0.0
EXPENDITURES							
55710	SANITATION MANAGEMENT	0.00	7,369.26	0.0	0.00	7,369.26	0.0
55754	LANDFILL OPERATION AND MAINTENANCE	0.00	125,391.34	0.0	0.00	121,506.34	0.0
58900	MISCELLANEOUS	0.00	2,244.79	0.0	0.00	1,160.87	0.0
Total EXPENDITURES		0.00	135,005.39	0.0	0.00	130,036.47	0.0
Total SOLID WASTE DISPOSAL		0.00	16,923.14	0.0	0.00	14,918.57	0.0

LOUDON COUNTY FINANCE
Summary Financial Statement
AUGUST 31, 2002

263 SELF-INSURANCE

Account	Description	Year-To-Date			AUGUST		
		Budget Estimate	Actual	Percent Of Budget	Estimate Avg/Mth	Actual	Percent Of Avg
REVENUES							
44990	OTHER LOCAL REVENUES	0.00	61,330.09-	0.0	0.00	19,391.98-	0.0
	Total REVENUES	0.00	61,330.09-	0.0	0.00	19,391.98-	0.0
EXPENDITURES							
72120	HEALTH SERVICES	0.00	54,081.32	0.0	0.00	26,035.45	0.0
	Total EXPENDITURES	0.00	54,081.32	0.0	0.00	26,035.45	0.0
	Total SELF-INSURANCE	0.00	7,248.77-	0.0	0.00	6,643.47	0.0

Summary Financial Statement
AUGUST 31, 2002

Fiscal Year Time Lapse: 16.66

355 CITY SCHOOL ADA - NO. 1

Account	Description	Year-To-Date			AUGUST		
		Budget Estimate	Actual	Percent Of Budget	Estimate Avg/Mth	Actual	Percent Of Avg
REVENUES							
40110	CURRENT PROPERTY TAX	3,182,000.00	3.88	0.0	265,166.67	0.00	0.0
40120	TRUSTEE'S COLLECTIONS - PRIOR YEAR	15,000.00	17,475.91-	116.5	1,250.00	5,414.01-	433.1
40130	CIR CLK/CLK & MASTER COLLECTIONS-PR YR	0.00	2,388.80-	0.0	0.00	2,388.80-	0.0
40140	INTEREST AND PENALTY	3,000.00	1,350.34-	45.0	250.00	474.54-	189.8
40210	LOCAL OPTION SALES TAX	0.00	97,632.55-	0.0	0.00	97,632.55-	0.0
40270	BUSINESS TAX	0.00	1,973.39-	0.0	0.00	1,973.39-	0.0
40350	INTERSTATE TELECOMMUNICATIONS TAX	0.00	257.42-	0.0	0.00	257.42-	0.0
46830	BEER TAX	0.00	2,446.30-	0.0	0.00	2,446.30-	0.0
46850	MIXED DRINK TAX	0.00	388.91-	0.0	0.00	388.91-	0.0
Total REVENUES		3,200,000.00	123,909.74-	3.9	266,666.67	110,975.92-	41.6
EXPENDITURES							
58900	MISCELLANEOUS	25,000.00-	2,425.07	9.7	2,083.33-	1,166.28	56.0
72810	CENTRAL AND OTHER	3,175,000.00-	213,421.66	6.7	264,583.33-	111,955.26	42.3
Total EXPENDITURES		3,200,000.00-	215,846.73	6.7	266,666.66-	113,121.54	42.4
Total CITY SCHOOL ADA - NO. 1		0.00	91,936.99	0.0	0.01	2,145.62	6200.0

LOUDON COUNTY FINANCE
Summary Financial Statement
AUGUST 31, 2002

357 JOINT VENTURE

Account	Description	Year-To-Date			AUGUST		
		Budget Estimate	Actual	Percent Of Budget	Estimate Avg/Mth	Actual	Percent Of Avg
REVENUES							
42310	FINES	0.00	1,664.40-	0.0	0.00	1,664.40-	0.0
42320	OFFICERS COSTS	0.00	1,198.97-	0.0	0.00	1,198.97-	0.0
44170	MISCELLANEOUS REFUNDS	0.00	818.00-	0.0	0.00	0.00	0.0
Total REVENUES		0.00	3,681.37-	0.0	0.00	2,863.37-	0.0
EXPENDITURES							
54110	SHERIFF'S DEPARTMENT	0.00	16,138.89	0.0	0.00	13,681.56	0.0
58900	MISCELLANEOUS	0.00	52.28	0.0	0.00	28.64	0.0
Total EXPENDITURES		0.00	16,191.17	0.0	0.00	13,710.20	0.0
Total JOINT VENTURE		0.00	12,509.80	0.0	0.00	10,846.83	0.0

LOUDON COUNTY FINANCE
Summary Financial Statement
AUGUST 31, 2002

363 CAREER CENTER OPERATIONS

Account	Description	Year-To-Date			AUGUST		
		Budget Estimate	Actual	Percent Of Budget	Estimate Avg/Mth	Actual	Percent Of Avg
REVENUES							
44120	LEASE/RENTALS	0.00	7,734.01-	0.0	0.00	5,533.67-	0.0
Total REVENUES		0.00	7,734.01-	0.0	0.00	5,533.67-	0.0
EXPENDITURES							
51810	OTHER FACILITIES	0.00	9,821.63	0.0	0.00	6,027.02	0.0
58900	MISCELLANEOUS	0.00	110.66	0.0	0.00	55.33	0.0
Total EXPENDITURES		0.00	9,932.29	0.0	0.00	6,082.35	0.0
Total CAREER CENTER OPERATIONS		0.00	2,198.28	0.0	0.00	548.68	0.0

G/L Month: 08 AUGUST
Beginning Fund: 101 Beginning Function:
Ending Fund: 365 Ending Function: ZZZZ

* End of Report: LOUDON CO CENTRAL ACCOUNTING *