

Loudon County Commission

Loudon, Tennessee

Tuesday, September 3, 2024

Courthouse Annex

6:00 pm

AGENDA

Regular Meeting

Swearing In and Oath – Commissioner Joe Morrison

To provide public comment, prior to the start of the meeting please write your name on the sign up sheet located on the podium for the Public Hearing

Public Hearing

1) Loudon County Codes Enforcement Director – Jim Jenkins

- A) A RESOLUTION AMENDING THE ZONING MAP OF LOUDON COUNTY, TENNESSEE, PURSUANT TO CHAPTER SEVEN, §13-7-105 OF THE TENNESSEE CODE ANNOTATED, TO REZONE FROM C-2, GENERAL COMMERCIAL DISTRICT TO R-1 SUBURBAN RESIDENTIAL DISTRICT. LOUDON COUNTY TAX MAP 020D, GROUP E, PARCELS 014.00 & 015.00, LOCATED AT 100 CHRISMAN RD, LOUDON COUNTY, TN, SITUATED IN THE 2ND LEGISLATIVE DISTRICT
- B) A RESOLUTION AMENDING THE ZONING MAP OF LOUDON COUNTY, TENNESSEE, PURSUANT TO CHAPTER SEVEN, §13-7-105 OF THE TENNESSEE CODE ANNOTATED, TO REZONE FROM A-2, RURAL RESIDENTIAL DISTRICT TO A-3, DEVELOPING AGRICULTURE DISTRICT. LOUDON COUNTY TAX MAP 060, PARCEL 111.02. LOCATED 3456 BROOK RD, LOUDON COUNTY, TN, SITUATED IN THE 3RD LEGISLATIVE DISTRICT
- C) A RESOLUTION AMENDING THE ZONING MAP OF LOUDON COUNTY, TENNESSEE, PURSUANT TO CHAPTER SEVEN, §13-7-105 OF THE TENNESSEE CODE ANNOTATED, TO REZONE FROM A-1, AGRICULTURE FORESTRY DISTRICT TO A-3, DEVELOPING AGRICULTURE DISTRICT. APPROXIMATELY 3.9 ACRES ONLY LOUDON COUNTY TAX MAP 043, PARCEL 032.00 LOCATED HWY 321/FAIRVIEW RD, LOUDON COUNTY, TN, SITUATED IN THE 3RD LEGISLATIVE DISTRICT

D) A RESOLUTION AMENDING THE ZONING MAP OF LOUDON COUNTY, TENNESSEE, PURSUANT TO CHAPTER SEVEN, §13-7-105 OF THE TENNESSEE CODE ANNOTATED, TO REZONE FROM A-2, RURAL RESIDENTIAL DISTRICT TO A-3, DEVELOPING AGRICULTURE DISTRICT. LOUDON COUNTY TAX MAP 049, PARCEL 115.00 LOCATED 102 SIMPSON RD, LOUDON COUNTY, TN, SITUATED IN THE 4TH LEGISLATIVE DISTRICT

E) A RESOLUTION AMENDING THE ZONING MAP OF LOUDON COUNTY, TENNESSEE, PURSUANT TO CHAPTER SEVEN, §13-7-105 OF THE TENNESSEE CODE ANNOTATED, TO REZONE FROM A-2, RURAL RESIDENTIAL DISTRICT TO C-2, GENERAL COMMERCIAL DISTRICT. LOUDON COUNTY TAX MAP 048, PARCEL 105.00 LOCATED 6633 LEE HWY, LOUDON COUNTY, TN, SITUATED IN THE 4TH LEGISLATIVE DISTRICT

F) A RESOLUTION AMENDING THE ZONING MAP OF LOUDON COUNTY, TENNESSEE, PURSUANT TO CHAPTER SEVEN, §13-7-105 OF THE TENNESSEE CODE ANNOTATED, TO REZONE FROM A-1, AGRICULTURE FORESTRY DISTRICT TO A-3, DEVELOPING AGRICULTURE DISTRICT. APPROXIMATELY 1 ACRE ONLY LOUDON COUNTY TAX MAP 054, PARCEL 023.00 LOCATED 27800 POND CREEK RD, LOUDON COUNTY, TN, SITUATED IN THE 4TH LEGISLATIVE DISTRICT

2) Election of Loudon County Commission Chairman and Chair Pro - Tempore for the September 2023- August 2024 Term

A) Mayor Bradshaw requests nominations for the election of the Loudon County Commission Chairperson for the September 2024 -August 2025 term

B) Chairperson requests nominations for the election of the Loudon County Commission Chair Pro - Tempore for the September 2024 - August 2025 term

3) Opening of Meeting, Pledge of Allegiance to the Flag of the United States, Invocation by Commissioner Joe Morrison

4) Roll Call

5) Adoption of September 3, 2024 County Commission Agenda

6) Reading and Acceptance of August 5, 2024 Loudon County Commission Minutes

7) General Public Comments

8) Loudon County Codes Enforcement Director – Jim Jenkins

- A) A RESOLUTION AMENDING THE ZONING MAP OF LOUDON COUNTY, TENNESSEE, PURSUANT TO CHAPTER SEVEN, §13-7-105 OF THE TENNESSEE CODE ANNOTATED, TO REZONE FROM C-2, GENERAL COMMERCIAL DISTRICT TO R-1 SUBURBAN RESIDENTIAL DISTRICT. LOUDON COUNTY TAX MAP 020D, GROUP E, PARCELS 014.00 & 015.00, LOCATED AT 100 CHRISMAN RD, LOUDON COUNTY, TN, SITUATED IN THE 2ND LEGISLATIVE DISTRICT
- B) A RESOLUTION AMENDING THE ZONING MAP OF LOUDON COUNTY, TENNESSEE, PURSUANT TO CHAPTER SEVEN, §13-7-105 OF THE TENNESSEE CODE ANNOTATED, TO REZONE FROM A-2, RURAL RESIDENTIAL DISTRICT TO A-3, DEVELOPING AGRICULTURE DISTRICT. LOUDON COUNTY TAX MAP 060, PARCEL 111.02 LOCATED 3456 BROOK RD, LOUDON COUNTY, TN, SITUATED IN THE 3RD LEGISLATIVE DISTRICT
- C) A RESOLUTION AMENDING THE ZONING MAP OF LOUDON COUNTY, TENNESSEE, PURSUANT TO CHAPTER SEVEN, §13-7-105 OF THE TENNESSEE CODE ANNOTATED, TO REZONE FROM A-1, AGRICULTURE FORESTRY DISTRICT TO A-3, DEVELOPING AGRICULTURE DISTRICT. APPROXIMATELY 3.9 ACRES ONLY LOUDON COUNTY TAX MAP 043, PARCEL 032.00 LOCATED HWY 321/FAIRVIEW RD, LOUDON COUNTY, TN, SITUATED IN THE 3RD LEGISLATIVE DISTRICT
- D) A RESOLUTION AMENDING THE ZONING MAP OF LOUDON COUNTY, TENNESSEE, PURSUANT TO CHAPTER SEVEN, §13-7-105 OF THE TENNESSEE CODE ANNOTATED, TO REZONE FROM A-2, RURAL RESIDENTIAL DISTRICT TO A-3, DEVELOPING AGRICULTURE DISTRICT. LOUDON COUNTY TAX MAP 049, PARCEL 115.00 LOCATED 102 SIMPSON RD, LOUDON COUNTY, TN, SITUATED IN THE 4TH LEGISLATIVE DISTRICT
- E) A RESOLUTION AMENDING THE ZONING MAP OF LOUDON COUNTY, TENNESSEE, PURSUANT TO CHAPTER SEVEN, §13-7-105 OF THE TENNESSEE CODE ANNOTATED, TO REZONE FROM A-2, RURAL RESIDENTIAL DISTRICT TO C-2, GENERAL COMMERCIAL DISTRICT. LOUDON COUNTY TAX MAP 048, PARCEL 105.00 LOCATED 6633 LEE HWY, LOUDON COUNTY, TN, SITUATED IN THE 4TH LEGISLATIVE DISTRICT
- F) A RESOLUTION AMENDING THE ZONING MAP OF LOUDON COUNTY, TENNESSEE, PURSUANT TO CHAPTER SEVEN, §13-7-105 OF THE TENNESSEE CODE ANNOTATED, TO REZONE FROM A-1, AGRICULTURE FORESTRY DISTRICT TO A-3, DEVELOPING AGRICULTURE DISTRICT. APPROXIMATELY 1 ACRE ONLY LOUDON COUNTY TAX MAP 054, PARCEL 023.00 LOCATED 27800 POND CREEK RD, LOUDON COUNTY, TN, SITUATED IN THE 4TH LEGISLATIVE DISTRICT

9) Mayor Bradshaw

A) Boards & Committees

- 1) Potential Candidates for Solid Waste-
Larry Jameson, Andy Lawson, Brett Zimmerman

B) Request Full-Time Records Custodian

10) Commissioner Waller

A) Road Standards

11) Director of Accounts and Budgets – Erin Rice

A) Consideration of a recommendation to approve an additional full-time Health Department Employee

B) Consideration of a request to approve an additional \$7,100 and \$48,000 budget committee recommendation for a total of \$55,100 at the County Clerk's Lenoir City Satellite Office

C) Consideration of a recommendation to approve amendments in the following funds:

- 1) General Capital Projects Fund 171

D) Distribution of the following reports:

- 1) FY 2024 Year End Report
- 2) Budget Committee Minutes – July 15, 2024
- 3) Summary Financial Statements – August 2024

12) Commissioner – Adam Waller

A) Bonds and Notaries

Cindy Auchey, Brenda J Burnette, Wendy Carney, Grazynz Gammons, Wayne Geoffrey, Gina Mucci Geremia, Lenora Hennen, Megan Hull, Ashley Jenkins, Kimberly Lovelace, Janie Shaver McCullah, Jacob Parker, Stephanie B Surret, Tyrese Washington, Brittany Wattenbarger, Tommie Woodby

LOUDON COUNTY COMMISSION
LOUDON COUNTY, TENNESSEE
Monday, August 5, 2024
Courthouse Annex Building
6:00 P.M.

REGULAR COMMISSION MINUTES

- (1) Opening of Meeting BE IT REMEMBERED, that the Board of Commission of Loudon County convened in regular session in Loudon, Tennessee on the 5th day of August 2024.
- Commission Chairman Cullen called the meeting to order at 6:00 pm.
- Commission Chairman Cullen opened the County Commission Meeting by leading the Pledge of Allegiance to the Flag of the United States of America, and then gave the invocation.
- (2) Roll Call Upon Roll Call, the following commissioners were present: Chase Randolph, Bill Geames, William Jenkins, Rosemary Quillen, Bill Satterfield, Gary Whitfield, Henry Cullen, Joe Morrison, Van Shaver, Adam Waller (10)
- Also present, was Mayor - Buddy Bradshaw, Director of Accounts and Budgets - Erin Rice and Chief Deputy - Tammie Wampler.
- (3) Agenda Adoption Commission Chairman Cullen requested that the August 5, 2024 agenda be adopted. Mayor Bradshaw requested to add to the agenda to purchase a vehicle for the Planning and Codes Department.
- Commissioner Shaver made a motion to approve the agenda as updated.
- Commissioner Quillen seconded the motion.
- Upon Voice Vote, the motion PASSED unanimously.
- (4) Minutes Approved Commission Chairman Cullen requested that the June 24, 2024 Loudon County Commission Meeting Minutes and Budget Approval Minutes be accepted.
- Commissioner Whitfield made the motion to approve the minutes of the Loudon County Board of Commissioners Meeting on June 24, 2024, and to ratify Resolution # 062424-B, as signed by the Chairman, Mayor and County Clerk.
- Commissioner Shaver seconded the motion.
- Commissioner Geames made a request to correct a typo in the minutes in regards to Commissioner Jenkins being absent and stated that the roll call reflected all ten commissioners present.
- Upon Voice Vote, the motion PASSED. Commissioner Quillen and Commissioner Jenkins voted no.
- (5) General Public Comments Commission Chairman Cullen called to the floor Rich Ankin and Wayne Schell for public comments.
- (6) Zoning -826 Oakland Rd, 7588 Hwy 411, Martel Road, 7600 Little Valley Rd, 4790 Steekee Rd, 5042 Corinth Church Rd, 5710 Brook Rd Loudon County Codes Enforcement Director - Jim Jenkins presented to commission:
- A) A RESOLUTION AMENDING THE ZONING MAP OF LOUDON COUNTY, TENNESSEE, PURSUANT TO CHAPTER SEVEN, §13-7-105 OF THE TENNESSEE CODE ANNOTATED, TO REZONE FROM A-1, AGRICULTURE FORESTRY DISTRICT TO A-3, DEVELOPING AGRICULTURE DISTRICT. LOUDON COUNTY TAX MAP 082, PARCEL 007.00 LOCATED 826 OAKLAND RD, LOUDON COUNTY, TN, SITUATED IN THE 4TH LEGISLATIVE DISTRICT EXHIBIT 080524-A
- B) A RESOLUTION AMENDING THE ZONING MAP OF LOUDON COUNTY, TENNESSEE, PURSUANT TO CHAPTER SEVEN, §13-7-105 OF THE TENNESSEE CODE ANNOTATED, TO REZONE FROM C-2, GENERAL COMMERCIAL DISTRICT TO A-3, DEVELOPING AGRICULTURE DISTRICT. LOUDON COUNTY TAX MAP 084, PARCEL 038.00 LOCATED 7588 HWY 411, LOUDON COUNTY, TN, SITUATED IN THE 3RD LEGISLATIVE DISTRICT EXHIBIT 080524-B

(C) A RESOLUTION AMENDING THE ZONING MAP OF LOUDON COUNTY, TENNESSEE, PURSUANT TO CHAPTER SEVEN, §13-7-105 OF THE TENNESSEE CODE ANNOTATED, TO REZONE FROM A-2, RURAL RESIDENTIAL DISTRICT TO A-3, DEVELOPING AGRICULTURE DISTRICT. APPROXIMATELY 5.25 ACRES ONLY LOUDON COUNTY TAX MAP 011, PARCEL 283.01 LOCATED MARTEL RD, LOUDON COUNTY, TN, SITUATED IN THE 6TH LEGISLATIVE DISTRICT
EXHIBIT 080524-C

(D) A RESOLUTION AMENDING THE ZONING MAP OF LOUDON COUNTY, TENNESSEE, PURSUANT TO CHAPTER SEVEN, §13-7-105 OF THE TENNESSEE CODE ANNOTATED, TO REZONE FROM A-2, RURAL RESIDENTIAL DISTRICT TO A-3, DEVELOPING AGRICULTURE DISTRICT. APPROXIMATELY 1 ACRE ONLY LOUDON COUNTY TAX MAP 042, PARCEL 038.00 LOCATED 7600 LITTLE VALLEY RD, LOUDON COUNTY, TN, SITUATED IN THE 1ST LEGISLATIVE DISTRICT
EXHIBIT 080524-D

(E) A RESOLUTION AMENDING THE ZONING MAP OF LOUDON COUNTY, TENNESSEE, PURSUANT TO CHAPTER SEVEN, §13-7-105 OF THE TENNESSEE CODE ANNOTATED, TO REZONE FROM A-2/R-E, RURAL RESIDENTIAL DISTRICT/SINGLE FAMILY EXCLUSIVE OVERLAY DISTRICT TO A-3/R-E, DEVELOPING AGRICULTURE DISTRICT/SINGLE FAMILY EXCLUSIVE OVERLAY DISTRICT LOUDON COUNTY TAX MAP 056, PARCELS 052.00 & 054.00 LOCATED 4790 STEEKEE RD/5042 CORINTH CHURCH RD LOUDON COUNTY, TN, SITUATED IN THE 4TH LEGISLATIVE DISTRICT
EXHIBIT 080524-E

(F) A RESOLUTION AMENDING THE ZONING MAP OF LOUDON COUNTY, TENNESSEE, PURSUANT TO CHAPTER SEVEN, §13-7-105 OF THE TENNESSEE CODE ANNOTATED, TO REZONE FROM A-1, AGRICULTURE FORESTRY DISTRICT TO A-3, DEVELOPING AGRICULTURE DISTRICT. APPROXIMATELY 1 ACRE ONLY LOUDON COUNTY TAX MAP 060, PARCEL 120.00 LOCATED 5710 BROOK RD, LOUDON COUNTY, TN, SITUATED IN THE 3RD LEGISLATIVE DISTRICT
EXHIBIT 080524-F

Commissioner Randolph made a motion to approve zoning resolutions A-F.

Commissioner Jenkins seconded the motion.

Commission Chairman Cullen called for a voice vote.

Upon Voice Vote, the motion PASSED.

Commissioner Waller stated he would not be voting due to conflict. Commissioner Waller abstained.

- (7) Full-time Employee @ Veteran's Service Office Mayor Bradshaw presented to commission the need for an additional Full-Time Employee at the Veteran's Service Office.
Commissioner Randolph made a motion to approve the request.

Commissioner Waller seconded the motion.

Commission Chairman Cullen called for a roll call vote.

Upon Roll Call Vote, the following commissioners voted AYE: Geames, Jenkins, Quillen, Satterfield, Whitfield, Cullen, Morrison, Shaver, Randolph (10)

Upon Roll Call Vote, the motion PASSED unanimously.

- (8) Replacement vehicle for Planning & Codes Mayor Bradshaw presented to commission the replacement vehicle needed for the Codes and Planning Office that was added to the agenda at the beginning of the meeting. Not to exceed \$ 50, 000 from ARPA funds.

Commissioner Shaver made a motion to approve the vehicle recommendation not to exceed \$ 50,000 from ARPA funds.

Commissioner Geames seconded the motion.

Commission Chairman Cullen called for a roll call vote.

Upon Roll Call Vote, the following commissioners voted AYE: Jenkins, Quillen, Satterfield, Whitfield, Cullen, Morrison, Shaver, Randolph, Geames, (10)

Upon Roll Call Vote, the motion PASSED unanimously.

(9) Road List
Updated
Inventory
List

Commissioner Shaver made a motion to approve Loudon County Road Superintendent - Billy Pickel's Road List and Updated Inventory List for Adoption.

Commissioner Waller seconded the motion.

(10) 911 Personnel
classification
change from
clerical to 1st
Responders

Commission Chairman Cullen called for a Voice Vote.

Upon Voice Vote, the motion PASSED. ~~EXHIBIT 080524-G~~ ~~EXHIBIT 080524-H~~

Commissioner Geames presented to commission the change of Loudon County 911 personnel from clerical to 1st Responders.

Commissioner Shaver seconded the motion.

Upon Voice Vote, the motion PASSED.

(11) Grants
Approved

Commissioner Geames stated that he would be presenting a resolution on August 15th at 1:30 at the 911 Board Meeting. Commissioner Geames invited all commissioners to attend. RESOLUTION 080524-I

Director of Accounts and Budgets Erin Rice presented to commission for consideration of a recommendation to approve/accept the following grants - all are no matching funds:

- Sr. Center - FY 2024 ETHRA/Office of Aging Grant amendment
- Sr. Center - FY 2025 TN Senior Center Major (Up to \$100K) Grant
- Sheriff's Office - FY 2025 SRO Grant (\$675,000)
- Sheriff's Office - FY 2025 TCI Grant (\$15,000)
- Sheriff's Office - FY 2025 Mental Health Transport Grant
- Sessions Court - AOC (Admin. Office of the Courts) Court Security Grant Program (\$22,000)
- Libraries - FY 2025 Pettway Grants (\$12,200)

Commissioner Shaver made a motion to approve the grants.

Commissioner Geames seconded the motion.

Commission Chairman Cullen called for a roll call vote.

Upon Roll Call Vote, the following commissioners voted AYE: Quillen, Satterfield, Whitfield, Cullen, Morrison, Shaver, Waller, Randolph, Geames, Jenkins (10)

Upon Roll Call Vote, the motion PASSED unanimously.

(12) ARPA Funds
(2nd Reading)

Director of Accounts and Budgets Erin Rice presented to commission for consideration of a recommendation to approve ARPA funds appropriations as follows (2nd Reading):

- \$3,000 - District 7 - Commissioner Cullen - non-profit contribution to Loudon County Humane Society
- \$5,000 - District 1A - Commissioner Randolph - non-profit contribution to Loudon Diamond Club
- \$5,000 - District 1B - Commissioner Geames - non-profit contribution to Loudon Diamond Club

Commissioner Randolph made a motion to approve the recommendation.

Commissioner Whitfield seconded the motion.

Commission Chairman Cullen called for a roll call vote.

Upon Roll Call Vote, the following commissioners voted AYE: Satterfield, Whitfield, Cullen, Morrison, Shaver, Waller, Randolph, Geames, Jenkins, Quillen (10)

Upon Roll Call Vote, the motion PASSED unanimously.

(13) Rural School
Interfund
capital Outlay
Note

Director of Accounts and Budgets Erin Rice presented to commission for consideration of approval of a resolution to issue a Rural School Interfund Capital Outlay Note for estimated Bidding and Fire Marshall fees for the New School, Philadelphia Elem., Greenback Aux Gym, and Greenback Football Stadium projects. (Copy of estimates from BOE Director of Schools, Mike Garren are attached; in addition to resolution)

Commissioner Shaver made a motion to approve the recommendation.

Commissioner Whitfield seconded the motion.

Commission Chairman Cullen called for a roll call vote.

Upon Roll Call Vote, the following commissioners voted AYE: Whitfield, Cullen, Morrison, Shaver, Waller, Randolph, Geames, Satterfield (8)

The following commissioners voted NAY: Jenkins, Quillen (2)

Upon Roll Call Vote, the motion PASSED. RESOLUTION 080524-J

(14) ARPA Funds -
AV System
for
Courthouse

Director of Accounts and Budgets Erin Rice presented to commission for consideration of request to pay additional amount of \$676.02 for AV system at Courthouse from ARPA (Copy of email & proposal from Mr. Harrelson attached)

Commissioner Shaver made a motion to approve the recommendation.

Commissioner Geames seconded the motion.

Commission Chairman Cullen called for a roll call vote.

Upon Roll Call Vote, the following commissioners voted AYE: Cullen, Morrison, Shaver, Waller, Randolph, Geames, Jenkins, Quillen, Satterfield, Whitfield (10)

Upon Roll Call Vote, the motion PASSED unanimously.

(15) Budget
Amendments-
Funds 101,
115, 121,
127, 171, 177

Director of Accounts and Budgets Erin Rice presented to commission for consideration of a recommendation to approve line adjustments and/or amendments in the following funds:

1. County General Fund 101 EXHIBIT 080524-K
2. Public Library Fund 115 EXHIBIT 080524-L
3. Special Purpose OPIOID Fund 121
EXHIBIT 080524-M
4. Special Revenue ARPA Fund 127 EXHIBIT 080524-N
5. General Capital Projects Fund 171
6. EXHIBIT 080524-O
7. Education Capital Projects Fund 177
EXHIBIT 080524-P

Commissioner Shaver made a motion to approve the budget amendments.

Commissioner Randolph seconded the motion.

Commission Chairman Cullen called for a roll call vote.

Upon Roll Call Vote, the following commissioners voted AYE: Morrison, Shaver, Waller, Randolph, Geames, Jenkins, Quillen, Satterfield, Whitfield, Cullen (10)

Upon Roll Call Vote, the motion PASSED unanimously.

Director of Accounts and Budgets - Erin Rice asked that the record reflect the following monthly reports for approval:

(16) Monthly
Reports

- Approved Budget Committee minutes - June 17, 2024
EXHIBIT 080524-Q

- Summary Financial Reports for July 2024 ~~EXHIBIT 080524-R~~

(17) Bonds and
Notaries

Commissioner Waller made a motion to approve the following Bonds and Notaries:

Maria D Almanza, Chloe Gene Carpenter, Carlos R Colon, Tina M Forbeck,
Cara Liles-Ford, Scott E Fray Jr, Michelle Lee Parris, Jane Raines, Nina Reed,
Susan Elaine Rich, Rebecca Simmons, Kayla E Smith, Latisha D Trent, Nikki
Watkins, Sharon Wethington

Commissioner Shaver seconded the motion.

Upon Voice Vote, the motion PASSED. ~~EXHIBIT 080524-S~~

(18) Adjournment

There being no further business a motion being duly made by Commissioner Shaver and
seconded by Commissioner Jenkins the August 5, 2024 County Commission was adjourned
at 6:39 pm.

Loudon County Commission Chairman

ATTEST:

Loudon County Clerk

Loudon County Mayor

RESOLUTION _____

A RESOLUTION AMENDING THE ZONING MAP OF LOUDON COUNTY, TENNESSEE, PURSUANT TO CHAPTER SEVEN, §13-7-105 OF THE TENNESSEE CODE ANNOTATED, TO REZONE FROM C-2, GENERAL COMMERCIAL DISTRICT TO R-1 SUBURBAN RESIDENTIAL DISTRICT. LOUDON COUNTY TAX MAP 020D, GROUP E, PARCELS 014.00 & 015.00, LOCATED AT 100 CHRISMAN RD, LOUDON COUNTY, TN, SITUATED IN THE 2ND LEGISLATIVE DISTRICT

WHEREAS, the Loudon County Commission, in accordance with Chapter Seven, §13-7-105 of the Tennessee Code Annotated, may from time to time, amend the number, shape, boundary, area or any regulation of or within any district or districts, or any other provision of any zoning resolution, and

WHEREAS, the Regional Planning Commission has forwarded a recommendation regarding the amendment to the Zoning Map of Loudon County, Tennessee,

WHEREAS, a notice of public hearing and a description of the resolution appeared in the Daily Edition on August 16, 2024 consistent with the provisions of Tennessee Code Annotated, §13-7-105, and

NOW, THEREFORE, BE IT RESOLVED by the Loudon County Commission that the Zoning Map of Loudon County, Tennessee be amended as follows:

Located at 100 Chrisman Rd, situated in the 2nd Legislative District, referenced by Tax Map 020D, Group E, Parcels 014.00 & 015.00 to be rezoned from C-2 (General Commercial District) to R-1 (Suburban Residential District)

BE IT FINALLY RESOLVED, that this Resolution shall take effect immediately, the public welfare requiring it.

ATTEST

LOUDON COUNTY CHAIRMAN

DATE: _____

APPROVED: LOUDON COUNTY MAYOR

The votes on the question of approval of this Resolution by the Planning Commission are as follows:

APPROVED: 9

DISAPPROVED: 0

ABSTAINED: _____

Patricia L. McNew
**ATTEST: SECRETARY LOUDON COUNTY
REGIONAL PLANNING COMMISSION**

Dated: 8/16/24

ILLUSTRATION ATTACHMENT

REZONE FROM C-2 (GENERAL COMMERCIAL DISTRICT)
TO R-1 (SUBURBAN RESIDENTIAL DISTRICT).
REFERENCED BY LOUDON COUNTY
TAX MAP 020D, GROUP E, PARCELS 014.00 & 015.00
LOCATED 100 CHRISMAN RD
LOUDON COUNTY, TN, SITUATED IN THE
2ND LEGISLATIVE DISTRICT



RESOLUTION _____

A RESOLUTION AMENDING THE ZONING MAP OF LOUDON COUNTY, TENNESSEE, PURSUANT TO CHAPTER SEVEN, §13-7-105 OF THE TENNESSEE CODE ANNOTATED, TO REZONE FROM A-2, RURAL RESIDENTIAL DISTRICT TO A-3, DEVELOPING AGRICULTURE DISTRICT. LOUDON COUNTY TAX MAP 060, PARCEL 111.02 LOCATED 3456 BROOK RD, LOUDON COUNTY, TN, SITUATED IN THE 3RD LEGISLATIVE DISTRICT

WHEREAS, the Loudon County Commission, in accordance with Chapter Seven, §13-7-105 of the Tennessee Code Annotated, may from time to time, amend the number, shape, boundary, area or any regulation of or within any district or districts, or any other provision of any zoning resolution, and

WHEREAS, the Regional Planning Commission has forwarded a recommendation regarding the amendment to the Zoning Map of Loudon County, Tennessee,

WHEREAS, a notice of public hearing and a description of the resolution appeared in, The Daily Edition on August 16, 2024 consistent with the provisions of Tennessee Code Annotated, §13-7-105, and

NOW, THEREFORE, BE IT RESOLVED by the Loudon County Commission that the Zoning Map of Loudon County, Tennessee be amended as follows:

Located 3456 Brook Rd, situated in the 3rd Legislative District, referenced by Tax Map 060, Parcel 111.02 to be rezoned from A-2 (Rural Residential District) to A-3 (Developing Agriculture District).

BE IT FINALLY RESOLVED, that this Resolution shall take effect immediately, the public welfare requiring it.

ATTEST

LOUDON COUNTY CHAIRMAN

DATE: _____

APPROVED: LOUDON COUNTY MAYOR

The votes on the question of approval of this Resolution by the Planning Commission are as follows:

APPROVED: 9

DISAPPROVED: 0

ABSTAINED: _____

Patricia A. McNew
ATTEST: SECRETARY LOUDON COUNTY
REGIONAL PLANNING COMMISSION

Dated: 8/16/24

RESOLUTION NO. _____

ILLUSTRATION ATTACHMENT

REZONE FROM A-2 (RURAL RESIDENTIAL DISTRICT)
TO A-3 (DEVELOPING AGRICULTURE DISTRICT).
REFERENCED BY LOUDON COUNTY TAX MAP 060, PARCEL 111.02
LOCATED AT 3456 BROOK RD,
LOUDON COUNTY, TN, SITUATED IN THE
3RD LEGISLATIVE DISTRICT



RESOLUTION _____

**A RESOLUTION AMENDING THE ZONING MAP OF LOUDON COUNTY, TENNESSEE, PURSUANT TO CHAPTER SEVEN, §13-7-105 OF THE TENNESSEE CODE ANNOTATED, TO REZONE FROM A-1, AGRICULTURE FORESTRY DISTRICT TO A-3, DEVELOPING AGRICULTURE DISTRICT.
APPROXIMATELY 3.9 ACRES ONLY
LOUDON COUNTY TAX MAP 043, PARCEL 032.00
LOCATED HWY 321/FAIRVIEW RD, LOUDON COUNTY, TN,
SITUATED IN THE 3RD LEGISLATIVE DISTRICT**

WHEREAS, the Loudon County Commission, in accordance with Chapter Seven, §13-7-105 of the Tennessee Code Annotated, may from time to time, amend the number, shape, boundary, area or any regulation of or within any district or districts, or any other provision of any zoning resolution, and

WHEREAS, the Regional Planning Commission has forwarded a recommendation regarding the amendment to the Zoning Map of Loudon County, Tennessee,

WHEREAS, a notice of public hearing and a description of the resolution appeared in, The Daily Edition on August 16, 2024 consistent with the provisions of Tennessee Code Annotated, §13-7-105, and

NOW, THEREFORE, BE IT RESOLVED by the Loudon County Commission that the Zoning Map of Loudon County, Tennessee be amended as follows:

Located Hwy 321/Fairview Rd, situated in the 3rd Legislative District, referenced by Tax Map 043, Parcel 032.00 to be rezoned from A-1 (Agriculture Forestry District) to A-3 (Developing Agriculture District).
Approximately 3.9 acres only

BE IT FINALLY RESOLVED, that this Resolution shall take effect immediately, the public welfare requiring it.

ATTEST

LOUDON COUNTY CHAIRMAN

DATE: _____

APPROVED: LOUDON COUNTY MAYOR

The votes on the question of approval of this Resolution by the Planning Commission are as follows:

APPROVED: 9

DISAPPROVED: 0

ABSTAINED: _____

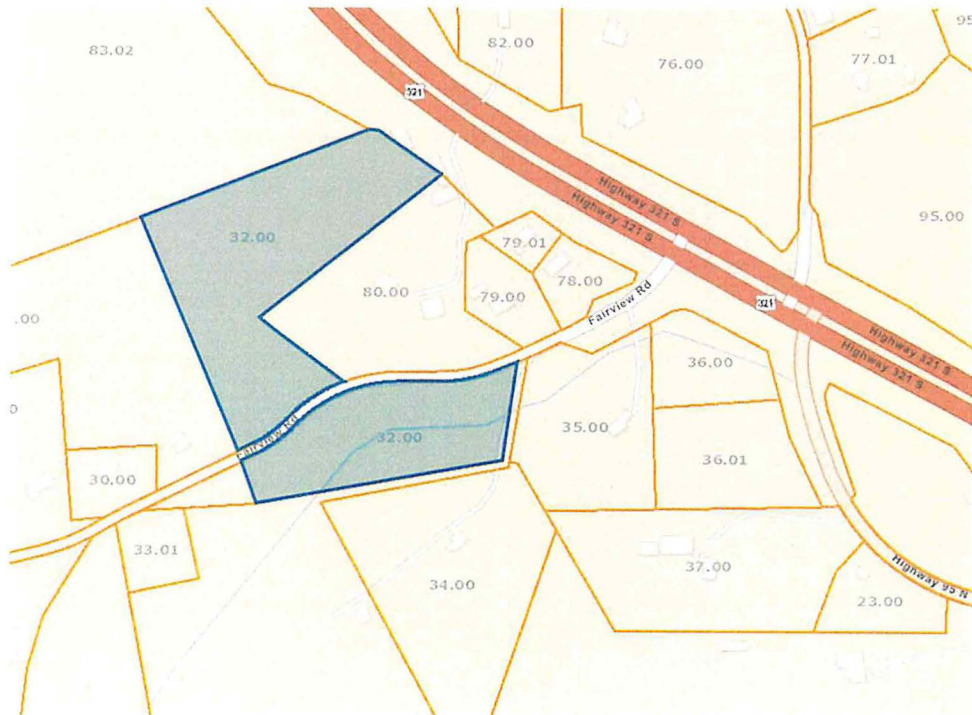
Rosemary McNew
**ATTEST: SECRETARY LOUDON COUNTY
REGIONAL PLANNING COMMISSION**

Dated: 8/16/24

RESOLUTION NO. _____

ILLUSTRATION ATTACHMENT

REZONE FROM A-1 (AGRICULTURE FORESTRY DISTRICT)
TO A-3 (DEVELOPING AGRICULTURE DISTRICT). APPROXIMATELY 3.9 ACRES ONLY
REFERENCED BY LOUDON COUNTY TAX MAP 043, PARCEL 032.00
LOCATED AT HWY 321/FAIRVIEW RD
LOUDON COUNTY, TN, SITUATED IN THE
3RD LEGISLATIVE DISTRICT



RESOLUTION _____

A RESOLUTION AMENDING THE ZONING MAP OF LOUDON COUNTY, TENNESSEE, PURSUANT TO CHAPTER SEVEN, §13-7-105 OF THE TENNESSEE CODE ANNOTATED, TO REZONE FROM A-2, RURAL RESIDENTIAL DISTRICT TO A-3, DEVELOPING AGRICULTURE DISTRICT. LOUDON COUNTY TAX MAP 049, PARCEL 115.00 LOCATED 102 SIMPSON RD, LOUDON COUNTY, TN, SITUATED IN THE 4TH LEGISLATIVE DISTRICT

WHEREAS, the Loudon County Commission, in accordance with Chapter Seven, §13-7-105 of the Tennessee Code Annotated, may from time to time, amend the number, shape, boundary, area or any regulation of or within any district or districts, or any other provision of any zoning resolution, and

WHEREAS, the Regional Planning Commission has forwarded a recommendation regarding the amendment to the Zoning Map of Loudon County, Tennessee,

WHEREAS, a notice of public hearing and a description of the resolution appeared in, The Daily Edition on August 16, 2024 consistent with the provisions of Tennessee Code Annotated, §13-7-105, and

NOW, THEREFORE, BE IT RESOLVED by the Loudon County Commission that the Zoning Map of Loudon County, Tennessee be amended as follows:

Located 102 Simpson Rd, situated in the 4th Legislative District, referenced by Tax Map 049, Parcel 115.00 to be rezoned from A-2 (Rural Residential District) to A-3 (Developing Agriculture District).

BE IT FINALLY RESOLVED, that this Resolution shall take effect immediately, the public welfare requiring it.

ATTEST

LOUDON COUNTY CHAIRMAN

DATE: _____

APPROVED: LOUDON COUNTY MAYOR

The votes on the question of approval of this Resolution by the Planning Commission are as follows:

APPROVED: 9

DISAPPROVED: 0

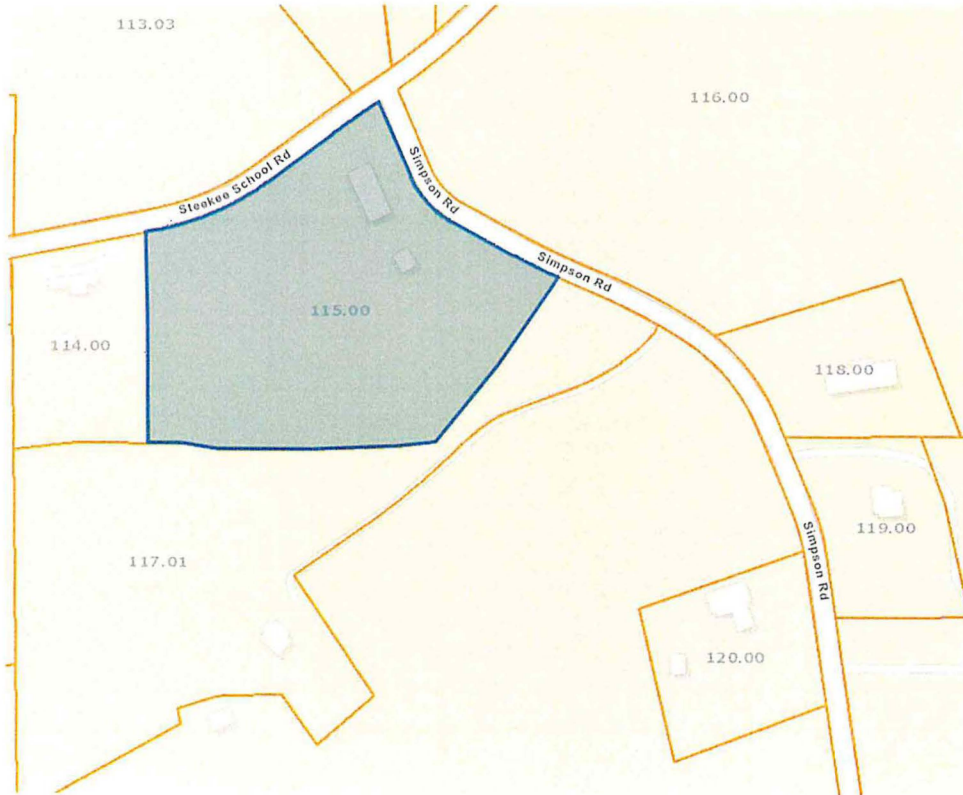
ABSTAINED: _____

Pamela S. Melow
ATTEST: SECRETARY LOUDON COUNTY
REGIONAL PLANNING COMMISSION
Dated: 8/16/24

RESOLUTION NO. _____

ILLUSTRATION ATTACHMENT

REZONE FROM A-2 (RURAL RESIDENTIAL DISTRICT)
TO A-3 (DEVELOPING AGRICULTURE DISTRICT).
REFERENCED BY LOUDON COUNTY TAX MAP 049, PARCEL 115.00
LOCATED AT 102 SIMPSON RD,
LOUDON COUNTY, TN, SITUATED IN THE
4TH LEGISLATIVE DISTRICT



RESOLUTION _____

**A RESOLUTION AMENDING THE ZONING MAP OF LOUDON COUNTY, TENNESSEE, PURSUANT TO CHAPTER SEVEN, §13-7-105 OF THE TENNESSEE CODE ANNOTATED, TO REZONE FROM A-2, RURAL RESIDENTIAL DISTRICT TO C-2, GENERAL COMMERCIAL DISTRICT.
LOUDON COUNTY TAX MAP 048, PARCEL 105.00
LOCATED 6633 LEE HWY, LOUDON COUNTY, TN,
SITUATED IN THE 4TH LEGISLATIVE DISTRICT**

WHEREAS, the Loudon County Commission, in accordance with Chapter Seven, §13-7-105 of the Tennessee Code Annotated, may from time to time, amend the number, shape, boundary, area or any regulation of or within any district or districts, or any other provision of any zoning resolution, and

WHEREAS, the Regional Planning Commission has forwarded a recommendation regarding the amendment to the Zoning Map of Loudon County, Tennessee,

WHEREAS, a notice of public hearing and a description of the resolution appeared in, The Daily Edition on August 16, 2024 consistent with the provisions of Tennessee Code Annotated, §13-7-105, and

NOW, THEREFORE, BE IT RESOLVED by the Loudon County Commission that the Zoning Map of Loudon County, Tennessee be amended as follows:

Located 6633 Lee Hwy, situated in the 4th Legislative District, referenced by Tax Map 048, Parcel 105.00 to be rezoned from A-2 (Rural Residential District) to C-2 (General Commercial District).

BE IT FINALLY RESOLVED, that this Resolution shall take effect immediately, the public welfare requiring it.

ATTEST

LOUDON COUNTY CHAIRMAN

DATE: _____

APPROVED: LOUDON COUNTY MAYOR

The votes on the question of approval of this Resolution by the Planning Commission are as follows:

APPROVED: 8

DISAPPROVED: 9

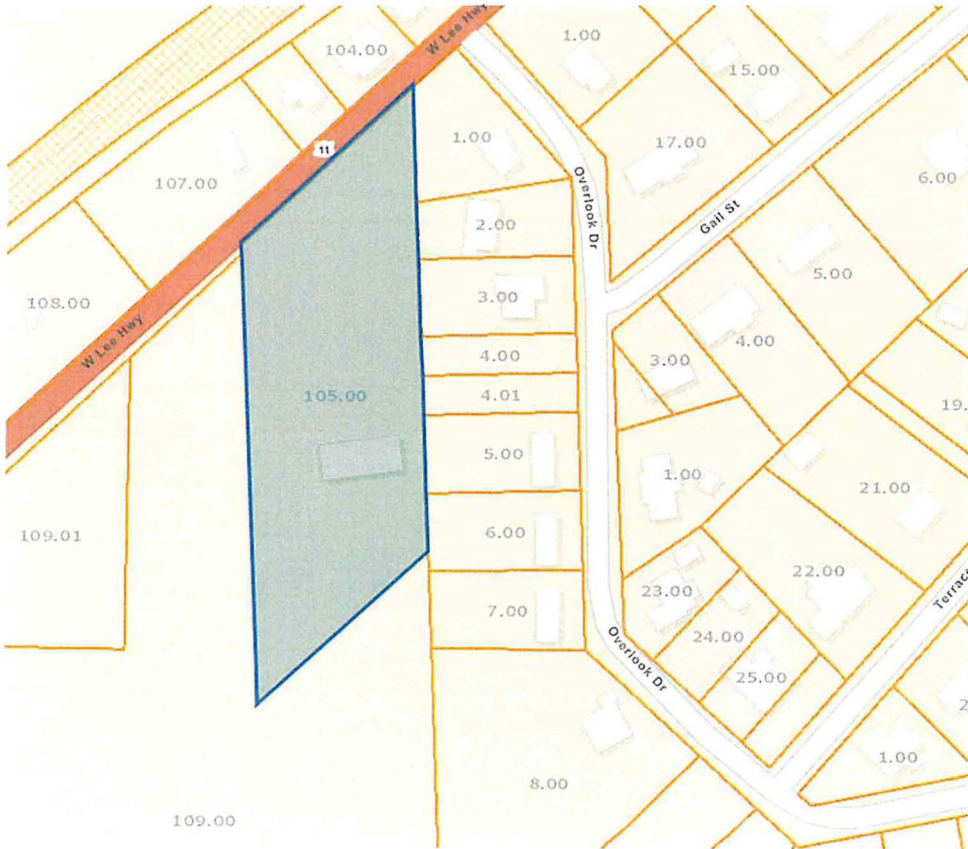
ABSTAINED: _____

Patricia G. McLean
**ATTEST: SECRETARY LOUDON COUNTY
REGIONAL PLANNING COMMISSION**
Dated: 8/16/24

RESOLUTION NO. _____

ILLUSTRATION ATTACHMENT

REZONE FROM A-2 (RURAL RESIDENTIAL DISTRICT)
TO C-2 (GENERAL COMMERCIAL DISTRICT).
REFERENCED BY LOUDON COUNTY TAX MAP 048, PARCEL 105.00
LOCATED AT 6633 LEE HWY,
LOUDON COUNTY, TN, SITUATED IN THE
4TH LEGISLATIVE DISTRICT



RESOLUTION _____

A RESOLUTION AMENDING THE ZONING MAP OF LOUDON COUNTY, TENNESSEE, PURSUANT TO CHAPTER SEVEN, §13-7-105 OF THE TENNESSEE CODE ANNOTATED, TO REZONE FROM A-1, AGRICULTURE FORESTRY DISTRICT TO A-3, DEVELOPING AGRICULTURE DISTRICT.

APPROXIMATELY 1 ACRE ONLY

LOUDON COUNTY TAX MAP 054, PARCEL 023.00

**LOCATED 27800 POND CREEK RD, LOUDON COUNTY, TN,
SITUATED IN THE 4TH LEGISLATIVE DISTRICT**

WHEREAS, the Loudon County Commission, in accordance with Chapter Seven, §13-7-105 of the Tennessee Code Annotated, may from time to time, amend the number, shape, boundary, area or any regulation of or within any district or districts, or any other provision of any zoning resolution, and

WHEREAS, the Regional Planning Commission has forwarded a recommendation regarding the amendment to the Zoning Map of Loudon County, Tennessee,

WHEREAS, a notice of public hearing and a description of the resolution appeared in, The Daily Edition on August 16, 2024 consistent with the provisions of Tennessee Code Annotated, §13-7-105, and

NOW, THEREFORE, BE IT RESOLVED by the Loudon County Commission that the Zoning Map of Loudon County, Tennessee be amended as follows:

Located 27800 Pond Creek Rd, situated in the 4th Legislative District, referenced by Tax Map 054, Parcel 023.00 to be rezoned from A-1 (Agriculture Forestry District) to A-3 (Developing Agriculture District). Approximately 1 acre only.

BE IT FINALLY RESOLVED, that this Resolution shall take effect immediately, the public welfare requiring it.

ATTEST

LOUDON COUNTY CHAIRMAN

DATE: _____


APPROVED: LOUDON COUNTY MAYOR

The votes on the question of approval of this Resolution by the Planning Commission are as follows:

APPROVED: 9

DISAPPROVED: 0

ABSTAINED: _____

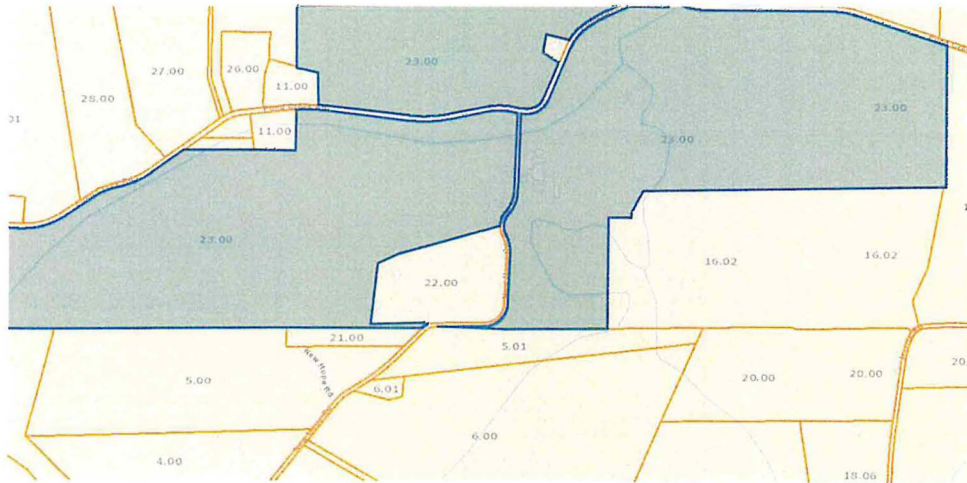

ATTEST: SECRETARY LOUDON COUNTY
REGIONAL PLANNING COMMISSION

Dated: 8/16/24

RESOLUTION NO. _____

ILLUSTRATION ATTACHMENT

REZONE FROM A-1 (AGRICULTURE FORESTRY DISTRICT)
TO A-3 (DEVELOPING AGRICULTURE DISTRICT). APPROXIMATELY 1 ACRE ONLY
REFERENCED BY LOUDON COUNTY TAX MAP 054, PARCEL 023.00
LOCATED AT 27800 POND CREEK RD
LOUDON COUNTY, TN, SITUATED IN THE
4TH LEGISLATIVE DISTRICT



2024 LOUDON COUNTY BOARDS & COMMITTEES

Board/Committee Name	Term	Comment	Expiration
Adult Oriented Business Board	4 YR		
Bill Satterfield		Commissioner	August 2026
Rosemary Quillen		Commissioner	August 2026
Bill Geames		Commissioner	August 2026
Chase Randolph		Commissioner	August 2026
Adam Waller		Commissioner	August 2026
Agriculture Extension Committee	2 YR		
Van Shaver		Commissioner	September 2025
Joe Alexander			September 2025
Beth Snipes			September 2024
Bill Satterfield		Commissioner	September 2026
Gary Whitfield		Commissioner	September 2026
John Walton			September 2026
Sharon Long			September 2026

Airport Authority	5 YR		
Adam Waller			August 2025
David Ferguson			August 2026
OPEN			
Van Shaver			August 2028
Clayton Pangle			August 2029
Animal Control Authority Advisory Board	1 YR		
Dusty Langley		At-Large	September 2025
Henry J. Cullen		Commissioner	September 2025
Heather Shields		At-Large	September 2025
Dr. Berry Gordon		Veterinarian Assoc.	September 2025
Meghan Hull		Humane Society	September 2025
Mike Brubaker		At-Large	September 2025
Audit Committee	4 YR Staggered		
Charlie Bettis			August 2028
Adam Waller		Commissioner	August 2028
Will Jenkins		Commissioner	August 2026
Van Shaver		Commissioner	August 2026

Beer Board	3 YR		
Ed Heilman		Panel C/7 th District	August 2027
Mary Ann Cook		Panel C/5 th District	August 2027
Krystee Ervin Conaway		Panel C/6 th District	August 2027
John Lovelace		Panel A/1 st District	August 2025
Connie Sledzinski		Panel A/2 nd District	August 2025
Jim Brooks		Panel B/3 rd District	August 2026
David Gray		Panel B/4 th District	August 2026
Board of Zoning Appeals	4 YR		
Mike Waller		1 st District	June 2026
Leon Shields		2 nd District Slot A	June 2027
Ryan Bright		4 th District	June 2026
Jim Brooks		3 rd District Slot B	June 2026
John Napier		1 st District	June 2026
Budget Committee	1 YR		
Henry Cullen		Commissioner	August 2025
Bill Satterfield		Commissioner	August 2025
Gary Whitfield		Commissioner	August 2025
Van Shaver		Commissioner	August 2025
Appointee Buddy Bradshaw		County Mayor	-----
Appointee Erin Rice		Budget Director	-----

E-911 Board	4 YR		
Jimmy Davis		Panel A-County Sheriff	February 2026
Van Shaver		Panel A-Commissioner	February 2026
James Webb		Panel A-Loudon City Police Chief	February 2026
Kelli Branam		Panel B-Loudon Co. EMA	February 2027
Richard Martin		Panel B-Lenoir City Fire Chief	February 2027
Don White		Panel B-Lenoir City Police Chief	February 2027
Mike Brubaker		Panel C-Loudon City Safety Director	February 2028
Bill Hart		Panel C-Rescue Squad Chief	February 2028
Ronnie Lett		Panel C-Greenback Fire Chief	February 2028
Ethics Committee	1 YR		
Billy Pickel-Constitutional Officer		Hwy Superintendent	September 2025
Steve Cook		At-large	September 2025
Bill Geames		Commissioner	September 2025
Bill Satterfield		Commissioner	September 2025
Will Jenkins		Commissioner	September 2025

Economic Development Agency B of D	1 YR		
Gary Whitfield		Commissioner	August 2025
Equalization Board	2 YR Even YR		
Ruth Henderson-McQueen			April 2026
Delmar Davis			April 2026
Patricia Sheppard			April 2026
OPEN			
Cynthia Fleming		Lenoir City Representative	April 2026
Financial Advisory Committee	1 YR		
Will Jenkins		Commissioner	August 2025
Van Shaver		Commissioner	August 2025
Chase Randolph		Commissioner	August 2025
Buddy Bradshaw-Chair		County Mayor	August 2025
Erin Rice		Budget Director	August 2025
Chip Miller		Trustee	August 2025

Governmental Affairs Committee	1 YR		
Bill Satterfield		Commissioner	August 2025
Henry Cullen		Commissioner	August 2025
Will Jenkins		Commissioner	August 2025
Chase Randolph		Commissioner	August 2025
Rosemary Quillen		Commissioner	August 2025
Industrial Bond/Development Board	6 YR	(Buddy Checking on This Committee)	
Mel Hines		Panel B	September 2026
Ted Wampler, Jr.		Panel B	September 2026
Bill Butera		Panel B	September 2026
James Thomason		Panel C	September 2027
Jim Curtis		Panel C	September 2027
Nancy Beaty		Panel C	September 2027
Bruce Martin		Panel A	September 2028
Adam Waller		Panel A	September 2028
Mike Webb		Panel A	September 2028

Loudon County Library Board	3 YR	6-5-23 NEW TRUSTEES & BOARD OFFICIALS	
Kyle Styer		Loudon	April 2027
Pauline Barbour		Philadelphia	April 2025
Cindy Benefield		Greenback	April 2025
Sandi Jorgeson		Tellico Village	April 2026
Sarah Thomason		Loudon	April 2026
Elizabeth Hall		Tellico Village	April 2025
Beth Walderman		Lenoir City	April 2025
JoAnn Hart		Lenoir City	April 2025
Carolyn Page		At-Large	April 2026
Library Board-Ocoee River Regional	3 YR		
Pauline Barbour			April 2027
Elizabeth Hall			April 2027
Litter Control Committee	1 YR		
Adam Waller		Commissioner	August 2025
Will Jenkins		Commissioner	August 2025
Bill Geames		Commissioner	August 2025
Jimmy Davis		County Sheriff	August 2025
Billy Pickel		Hwy Superintendent	August 2025
Chris Parks		Convenience Center Director	

Maintenance Committee	1 YR		
Greg Montooth		Maintenance Supervisor	August 2025
Van Shaver		Commissioner	August 2025
Gary Whitfield		Commissioner	August 2025
Scott Newman		Board of Education	August 2025
Bobby Johnson		Board of Education	August 2025
Planning Commission (RPC)	1 YR		
Leon Shield		Slot B/2 nd District	June 2025
Mike Waller		6 th District	June 2025
Pam McNew		Slot A/1 st District	June 2025
Keith Buckles		Slot A/5 th District	June 2025
Jimmy Williams		Slot B/5 th District	June 2025
Jim Brooks		3 rd District	June 2025
John Napier		Slot B/1 st District	June 2025
Todd Kennedy		Slot A/2 nd District	June 2025
Ryan Bright		4 th District	June 2025
Purchasing Committee	1 YR		
Rosemary Quillen		Commissioner	August 2025
Chase Randolph		Commissioner	August 2025
Bill Geames		Commissioner	August 2025
Adam Waller		Commissioner	August 2025
Buddy Bradshaw		County Mayor	August 2025
Matt Kleinschmidt (ex-officio)		Purchasing Director	August 2025

Roane State Maintenance & Operations Advisory Committee	3 YR		
Bill Satterfield		Commissioner	June 2026
Greg Montooth		Loudon Maintenance Director	June 2026
Tony Aikens		Lenoir City Mayor	June 2026
Susan Williams		Roane State	June 2026
Safety Committee	1 YR		
Riley Wampler		County Clerk	August 2025
Buddy Bradshaw		County Mayor	August 2025
Chip Miller		Trustee	August 2025
Tammy Gallahar		Register of Deeds	August 2025
Steve Harrelson		Circuit Criminal Court Clerk	August 2025
Jimmy Davis		County Sheriff	August 2025
Henry Cullen		Commissioner	August 2025
Becky Wallace			August 2025
Rex Dale		General Sessions Judge	August 2025
Mike Campbell		Property Assessor	August 2025
Greg Montooth		Facilities Maintenance Director	August 2025
Erin Rice		Budget Director	August 2025
Hank Sledge		General Sessions Judge, Div 2	August 2025

Salary Benefit AD-HOC Committee	1 YR		
Lisa Niles Scott		Clerk & Master	August 2025
Henry Cullen		Commissioner	August 2025
Gary Whitfield		Commissioner	August 2025
Riley Wampler		County Clerk	August 2025
Whittney Caldwell		Employee Benefits	August 2025
Buddy Bradshaw		County Mayor	August 2025
Matt Kleinschmidt		Purchasing Director	August 2025
Tammy Gallahar		Register of Deeds	August 2025
Steve Harrelson		General Sessions Court Clerk	August 2025
Jimmy Davis		County Sheriff	August 2025
Chip Miller		Trustee	August 2025
Billy Pickel		Hwy Superintendent	August 2025
Greg Montooth		Facilities Maintenance Director	August 2025
Erin Rice		Finance Director	August 2025
Rex Dale		Judge	August 2025
Hank Sledge		Judge	August 2025
Mike Campbell		Property Assessor	August 2025
Senior Citizens Executive Committee	1 YR		
Joe Morrision		Commissioner	August 2025
Bill Satterfield		Commissioner	August 2025
Becky Wallace		Senior Citizens Center Director	August 2025

Sheriff's Merit Services Board			
Bill Geames		Commissioner	August 2025
Gary Whitfield		Commissioner	August 2025
Steve Cook			August 2025
Solid Waste Disposal Committee	6 YR		
Larry Rolen		Panel B	April 2027
VACANT		Panel B	
Adam Waller (9-6-22) temporary		Panel C	March 2025
Gary Busch		Panel C	March 2025
Dave Hall (Appointed by Loudon)		Panel A-Loudon	March 2029
VACANT		Panel A-Commissioner	March 2029
Monty Ross (appointed by Lenoir City)		Panel A-Lenoir City	March 2029
Surplus Property Authority	1 YR		
Joe Morrison		Commissioner	August 2025
Will Jenkins		Commissioner	August 2025
Adam Waller		Commissioner	August 2025
Chase Randolph		Commissioner	August 2025
Buddy Bradshaw		County Mayor	August 2025
Matt Kleinschmidt		Purchasing Director	August 2025
TCCA Legislative Committee	1 YR		
Rosemary Quillen		Commissioner	June 2025

TRDA Board of Directors (Loudon)	6 YR		
Henry Cullen			August 2030
Jimmy Matlock			August 2026
Buddy Bradshaw			August 2026
TASS Board of Directors (Loudon)	3 YR		
Bill Satterfield			June 2026
James Brooks			June 2027
Chip Miller			June 2025
ADD HOC PLANNING	1 YR		
Van Shaver			November 2024
Adam Waller			November 2024
PUBLIC RECORDS COMMITTEE			
Darryl Tuck		Historian	
Nancy Gregg		At-Large	
Van Shaver		County Commissioner	
Adam Waller		Genealogist	
Tammy Gallaher		Register of Deeds	
Riley Wampler		County Clerk	
Hank Sledge		Judge	

Revised 08/15/2024 by TW

GUIDE:



Needs to be renewed / Date shows new renewal expiration



Buddy Checking on Committee

RESOLUTION # _____

**A RESOLUTION AMENDING THE GENERAL CAPITAL PROJECTS FUND 171
TO MORE ACCURATELY REFLECT ANTICIPATED REVENUES AND EXPENDITURES
FOR THE FISCAL YEAR BEGINNING JULY 1, 2024 AND ENDING JUNE 30, 2025**

WHEREAS, Loudon County Commission adopted the 2024 – 2025 budget that included the General Capital Projects Fund 171 on June 24, 2024; and

WHEREAS, amendments in the revenue and/or expense budgets are now recommended to more accurately reflect anticipated and/or known revenues and expenditures for the current fiscal year; and

WHEREAS, sources of revenue for the amendments in revenue budgets include Local Revenues; as well as Other Sources; and

WHEREAS, amendments in the expense budgets will appropriate funds for expenditures that were unknown at the time of the original FY 2024 – 2025 budget adoption; and

WHEREAS, funds for amendments in the expense budgets that do not have a direct revenue stream will be provided for from the available fund balance; and

WHEREAS, the estimated Beginning Fund Balance will be updated to reflect the Year End Report (unaudited estimates) or audit (if available); thereby a more accurate budget.

NOW, THEREFORE, BE IT RESOLVED, that the FY 2024 - 2025 General Capital Projects Fund 171 has been amended by Loudon County Commission.

BE IT FURTHER RESOLVED, that the projected fund balance at fiscal year-end has been adjusted and is summarized as follows:

	Original Budget	Previously Approved Amends	Amends Approved this Res	Approved Amended Budget
Unaudited June 30, 2024 FB	5,004,907			
Less Unaudited Enc	(1,167,868)			
Available Fund Balance July 1, 2024	3,837,039			
Total Revenue & Transfers In	0	34,142	0	34,142
Total Available Funds	3,837,039	34,142	0	3,871,181
Total Expenditures & Transfers Out	250,000	39,517	48,000	337,517
Effect on Fund Balance	(250,000)	(5,375)	(48,000)	(303,375)
Ending Fund Balance	3,587,039	(5,375)	(48,000)	3,533,664

[SEE ATTACHED EXHIBIT ____ DETAILED SPREADSHEET]

BE IT FINALLY RESOLVED, that this resolution take effect immediately and is spread upon the minutes of Loudon County Commission meeting in regular session on

September 3, 2024

Loudon County Commission Chair

ATTEST:

Loudon County Clerk

Loudon County Mayor

LOUDON COUNTY
General Capital Projects Fund 171
Fiscal Year Ending June 30, 2025

	A	B	C	D	E	F	G	H	I	J	K
1											
2					08/28/24						
3					8/28/24 5:12 PM		2024-2025	2024-2025	Approved	Proposed	Proposed
4							Org Bgt	Amds	Amded Bgt	Amds	Amded Budget
369											
370											
371	SUBFUND C75 - PROCEEDS FROM SALE OF PROPERTY IN CENTRE 75										
372	REVENUE										
373		49800			Transfers in from Centre 75 Fund 119 - Sale of Lot 7 & 8			0	0		0
374		49800			Transfers in from Centre 75 Fund 119 -				0		0
375											
376					Total Other Non-Revenue Sources		0	0	0	0	0
377											
378					TOTAL SUBFUND C75 REVENUE		0	0	0	0	0
379											
380	EXPENDITURES										
381		91190	Other General Government Projects								
382			309		Contracts with Government Agencies				0		0
383											
384					TOTAL SUBFUND C75 EXPENSES		0	0	0	0	0
385											
386											
387											
388	SUBFUND C75 SUMMARY:										
389					Beginning Balance July 1, 2024		353,454				
390											
391					Plus FY 24-25 Revenue		0	0	0	0	0
392											
393					Less FY 24-25 Expenditures		0	0	0	0	0
394											
395					Revenue/Expense Effect		0	0	0	0	0
396											
397											
398					Cash Transfer to Subfund 024 - Co. Clerk LC Bldg Purchase				0		0
399					Cash Transfer to Subfund 024 - Co. Clerk LC Bldg Renovation				0	(55,100)	(55,100)
400											
401					Estimated June 30 2025 Subfund C75 Balance		353,454	0	353,454	(55,100)	298,354

LOUDON COUNTY
General Capital Projects Fund 171
Fiscal Year Ending June 30, 2025

	A	B	C	D	E	F	G	H	I	J	K
1											
2					08/28/24						
3					8/28/24 5:12 PM		2024-2025	2024-2025	Approved	Proposed	Proposed
4							Org Bgt	Amds	Amded Bgt	Amds	Amded Budget
640	SUBFUND 024 - FY 2023-2024 Requested Projects										
641	REVENUE										
642		49000	Other Sources - Non-Revenue								
643			49600	TRADE	Proceeds from Sale of Capital-Trade-In Vehicles				0		0
644											
645					Total Other Non-Revenue Sources		0	0	0	0	0
646											
647					TOTAL SUBFUND 024 REVENUE		0	0	0	0	0
648											
649	EXPENDITURES										
650		91110	General Administration Projects								
651			399		Other Contracted Services				0		0
652			399	COCRK	Oth. Contr'd Svc.-Co. Clerk Lenoir City Office				0	48,000	48,000
653			471	PURCH	Software - Asset Management				0		0
654			708	IT	Network Switches @ COB				0		0
655			708	IT	New Camera System @ COB				0		0
656			709	COCRK	Data Processing Equip-New Server @ County Clerk				0		0
657			718	TRADE	Motor Vehicles - TRADE - FY 23				0		0
658			732	COCRK	Building Purchase - Co. Clerk Lenoir City Office				0		0
659											
660					Total Expenses		0	0	0	48,000	48,000
661											
662											
663	SUBFUND 024 SUMMARY:										
664					Beginning Balance July 1, 2024		153,884				
665					Less PY Encumbrances		(120,489)				
666					Plus FY 24-25 Revenue		0	0	0	0	0
667											
668					Less FY 24-25 Expenditures		0	0	0	48,000	48,000
669											
670					Revenue/Expense Effect		0	0	0	(48,000)	(48,000)
671											
672					Cash Transfer in from SUBFUND BAL						
673					Cash Transfer in from SUBFUND C75					55,100	
674					Cash Transfer in from SUBFUND C75						
675					Cash Transfer in from SUBFUND BAL						
676											
677					Estimated June 30 2025 Subfund 024 Balance		33,395	0	33,395	7,100	40,495

FY 2023 – 2024

Fund Summary per Year End Report
(Unaudited)

County General Fund 101
General Purpose School Fund 141

Distributed August 19, 2024

Budget Committee

Commission Workshop

Unaudited FY 2024 Year End Report

County General Fund 101

Total Fund Balance per YE	16,761,587	Est. FB per FY 2024 Budget	11,100,798		
Less PY Encumbrances	75,348	Plus FY 2024 Realized Revenue	106%	1,751,309	Total FB per FY 2023 Audit 15,200,569
Less Restrictions & Commitments	1,793,614	Plus FY 2024 Unencumb. Expense	94%	1,660,237	Total FB per FY 2024 YE 16,761,587
Total Available for FY 2024 Expenses	14,892,625			14,512,344	Gain/(Loss) 1,561,018

FY 2024:
Revenue Budget=27,927,459
Rev Rec'd=29,678,768

FY 2024:
Exp Budget=29,895,885
YTD Exp=28,160,300

Rice, Erin:

Current Property Tax +363,368

Local Option:

Sales Tax +365,097
Hotel/Motel Tax +162,159
Business Tax +226,160

Other Local Revenue:

Investment Income: \$121,533

Fees in Lieu of Salary:

County Clerk +178,856
General Sessions +71,091
Trustee +77,121

Fund 101 FY 2024 Revenue:

	%	Realized	Gain/(Loss)
County Property Taxes	103%	374,868	
Local Option & Statutory (43% of Gain)	113%	755,249	
Licenses & Permits	104%	41,084	
Fines, Forfeitures & Penalties	103%	9,057	
Charges for Current Services	102%	3,127	
Other Local Revenues	114%	123,085	
Fees In Lieu of Salary	116%	426,484	
State of TN	102%	88,199	
Federal	75%	(83,865)	
Govts, Citizens Groups & Sources	91%	14,022	
		1,751,309	

	%	Spent	Gain/(Loss)
General Government	93%	357,948	
Finance	91%	306,274	
Adm. Of Justice	94%	171,194	
Public Safety (31% of Gain)	97%	508,337	
Public Health & Welfare	85%	172,582	
Social, Cultural & Recreational	95%	14,304	
Ag & Natural Resources	81%	51,116	
Other General Government	96%	42,991	
General Government	97%	35,492	
		1,660,237	

Unaudited FY 2024 Year End Report

General Purpose School Fund 141

Total Fund Balance per YE	17,360,585	Est. FB per FY 2024 Budget	9,275,787		
Less PY Encumbrances	493,808	Less Audited FY 2023 Rest & Enc	(1,473,553)		
Restricted for Hybrid TCRS Stabilization	649,346	Less FY 2024 Realized Revenue	104%	2,470,197	Total FB per FY 2023 Audit
		Plus FY 2024 Unencumb. Expense	92%	4,275,959	Total FB per FY 2024 YE
					11,119,947
					17,360,585
Total Available for FY 2024 Expenses	16,217,431			14,548,390	Gain/(Loss)
					6,240,638

Rice, Erin:

Local Option:

Sales Tax +2,347,428

Other Local Revenues:

Investment Income: +294,039

State of TN:

ISM Grant - \$1.3million expected to be realized in FY 25

Federal:

COVID Grant (for past expenses): +154,061

ISM Grant: +645,975

Fund 141 FY 2024 Revenue:

County Property Taxes	102%
Local Option & Statutory	204%
Licenses & Permits	123%
Charges for Current Services	44%
Other Local Revenues	296%
State of TN	96%
Federal	347%
Govts, Citizens Groups & Sources	109%

Realized	Gain/(Loss)
102%	224,136
204%	2,416,710
123%	270
44%	(11,475)
296%	298,959
96%	(1,330,101)
347%	849,352
109%	22,346
	2,470,197

Fund 141 FY 2023 Expenses:	Spent	Gain/(Loss)
Instruction	95%	1,691,673
Support Services	90%	1,823,347
Non-Instructional Services	92%	91,661
Capital Outlay	10%	669,279
		4,275,959

Rice, Erin:

Instruction: \$1.08 million was rolled into fund balance from the ISM grant expenses that will move forward to FY 2025.

Support Services:

Nurses were budgeted in Fund 141 & Fund 142, but due to the delay in the Fund 142 budget approval from the State; Fund 141 expenses were not needed and unspent.

Loudon County Budget Committee
Meeting Minutes
July 15, 2024

COMMITTEE MEMBERS:

Mayor Rollen "Buddy" Bradshaw, Chair
Commissioner Henry Cullen, Vice Chair
Commissioner Bill Satterfield
Commissioner Van Shaver
Commissioner Gary Whitfield
Erin Rice, Budget Director

The following members of the Budget Committee were present: Mayor Bradshaw, Commissioner Cullen, Commissioner Shaver, Commissioner Whitfield, and Ms. Rice. Commissioner Satterfield was absent.

The following items were considered:

Consideration of approval of minutes of June 17, 2024 meeting:

Commissioner Shaver made a motion to approve the minutes, seconded by Commissioner Cullen; **PASSING UNANIMOUSLY** upon the vote.

Consideration of request to approve/accept the following grants:

- a. Sr. Center – FY 2024 ETHRA/Office of Aging Grant amendment – no matching funds
- b. Sr. Center – FY 2025 TN Senior Center Major (Up to \$100K) Grant – no matching funds
- c. Sheriff's Office – FY 2025 SRO Grant (\$675,000) – no matching funds
- d. Sheriff's Office – FY 2025 TCI Grant (\$15,000) – no matching funds
- e. Sheriff's Office – FY 2025 Mental Health Transport Grant – no matching funds
- f. Sessions Court – AOC (Admin. Office of the Courts) Court Security Grant Program (\$22,000) – no matching funds
- g. Libraries – FY 2025 Pettway Grants (\$12,200) – no matching funds

Commissioner Shaver made a motion to approve, seconded by Commissioner Whitfield; **PASSING UNANIMOUSLY** upon the vote.

Health Department updates – Teresa Harrell, Health Department Director

Ms. Harrell indicated that now they have received some quotes on the flooring, painting, and the sewer system. Ms. Harrell indicated that MBI would not move forward with the renovation until they know what the County is planning to do about the issues from the water damage that happened in December 2022. Ms. Harrell deferred to Greg Montooth, Maintenance Director. Mr. Montooth indicated that the plumbing problem would cost about \$3,500. Commissioner Shaver asked if the plumbing issue has been fixed and Mr. Montooth indicated that it was not fixed yet. Commissioner Shaver indicated that his understanding was that at the last meeting it was discussed about what the insurance company would cover or would not cover. Mayor Bradshaw indicated that the insurance company has paid for the damage with the exception of the depreciation. Commissioner Whitfield asked for the total claim from the insurance company. Ms. Rice stated that the insurance claim included the damage to the Health Department and the Animal Shelter. Ms. Harrell stated that at another meeting with the Mayor and Mr. Montooth, they thought that the remaining insurance money of \$39,517 could be put with the grant to fix the damages. The Budget Committee continued to discuss the damages that are needed and the

insurance money received. Mr. Montooth stated that to fix the drywall, the quote is \$3,540; the plumbing was quoted at \$3,500; vinyl flooring is \$59,443; the painting quote is \$44,000. Mr. Montooth indicated that the painting would include the whole building and was a high labor quote because there is wall-paper on the walls that will need to be removed before re-painting. The flooring was discussed since the insurance company indicated that the floor would not need to be replaced.

Ms. Rice let the Committee know that \$159,884.54 was received from the insurance company on the damages for both the Animal Shelter and Heath Department. Ms. Rice informed the Committee that Serv-pro was paid \$110,00 from the insurance money. The Budget Committee continued the discussion about the damages.

The Budget Committee decided to appropriate the remaining insurance money in the amount of \$39,517 from Fund 171-FRZ.

Commissioner Shaver made a motion to approve, seconded by Commissioner Cullen; **PASSING UNANIMOUSLY** upon the vote.

Consideration of request to approve an additional full-time Veteran Officer in Veteran Affairs Department – Mayor Bradshaw

Mayor Bradshaw requested an additional full-time Veteran Officer beginning at \$16.00/hour and when certified, increasing the hourly rate to \$17.00/hour.

Commissioner Shaver made a motion to approve, seconded by Commissioner Whitfield; **PASSING UNANIMOUSLY** upon the vote.

Consideration of request to approve ARPA funds to the following (2nd reading):

- a. ***\$3,000 for Loudon County Humane Society from 7th District – Commissioner Cullen***
- b. ***\$10,000 for Loudon Diamond Club from 1st – Seat A, Commissioner Randolph (\$5,000) and Seat B, Commissioner Geames (\$5,000)***

Commissioner Whitfield made a motion to approve, seconded by Commissioner Shaver; **PASSING UNANIMOUSLY** upon the vote.

Consideration of approval of a resolution to issue an Rural School Interfund Capital Outlay Note for estimated Bidding and Fire Marshall fees for the New School, Philadelphia Elem., Greenback Aux Gym, and Greenback Football Stadium projects.

Ms. Rice explained that \$450,000 was needed to begin the process of bidding and Fire Marshall fees for these projects. Ms. Rice continued that after speaking with Cumberland Securities, Scott Gibson, the best solution would be to do an Interfund CON from the County General Fund to Education Capital Projects and the Rural Debt Service Fund will reimburse the County General Fund.

Commissioner Shaver made a motion to approve, seconded by Commissioner Whitfield; **PASSING UNANIMOUSLY** upon the vote.

Consideration of approval of line adjustments and/or recommendation to approve amendments in the following funds:

a. County General Fund 101

Ms. Rice indicated that the majority of the amendments were adjustments for the grants that were approved earlier in the meeting and there was one line adjustment for EMA.

Commissioner Shaver made a motion to approve Fund 101, seconded by Commissioner Whitfield. The motion ***PASSED UNANIMOUSLY*** upon the vote.

b. Public Library Fund 115

Ms. Rice indicated that the only amendment in this fund is for the Pettway Grant.

Commissioner Shaver made a motion to approve Fund 115, seconded by Commissioner Cullen. The motion ***PASSED UNANIMOUSLY*** upon the vote.

c. Special Revenue ARPA Fund 127

Ms. Rice indicated that Fund 127 includes amendments to reappropriate the funds that were not expensed or encumbered in the previous year.

Commissioner Shaver made a motion to approve Fund 127, seconded by Commissioner Whitfield. The motion ***PASSED UNANIMOUSLY*** upon the vote.

Later at the Commission meeting, August 5, 2024, included an amendment in Fund 127 for \$50,000 for a new vehicle in the Codes Department.

At this time, Mayor Bradshaw recognized Chris Hutchens, Sheriff's Department Chief of Operations. Mr. Hutchens began explaining that the Sheriff's Department vehicles were approved in the OPIOID Fund. Ms. Rice indicated that after reaching out to the SMART Initiative, which is a group that assists with spending the settlement OPIOID funds; it was determined that vehicles cannot be purchased from these funds. The settlement funds can be used for past remediation or future remediation. These representatives, from the SMART Initiative, will be attending the Budget Committee meeting on August 19th to assist in the discussion of the use of these funds.

The discussion continued with the need by the Sheriff's Department for vehicles. The Committee was informed that \$276,000 was allocated for Sheriff's department vehicles in Fund 121-OPIOID. The committee continued to discuss where to fund these vehicles. Mr. Hutchens explained the need for the vehicles.

Commissioner Whitfield made a motion to approve the vehicles from Fund 101, seconded by Commissioner Shaver. The motion ***PASSED UNANIMOUSLY*** upon the vote.

Ms. Rice requested that if the vehicles will be funded from County General, if the Committee was ok with an amendment to remove the vehicles funding from Fund 121-OPIOID.

Commissioner Shaver made a motion to approve an amendment to reduce Fund 121 by \$276,000, seconded by Commissioner Cullen. The motion ***PASSED UNANIMOUSLY*** upon the vote.

At this time, Mayor Bradshaw recognized Steve Harrelson, Circuit/Sessions Court Clerk. Mr. Harrelson indicated that he recently meet with audio/visual company, regarding the audio/visual equipment that will move from Alma place to the Courthouse. The meeting with 323 Link and the General Contractor working on the Courthouse, revealed that within the next two weeks the sprinkler system will be put into the Courthouse and then the ceiling. However, the wiring needs to be ran before the ceiling, because it is a sheetrock ceiling. Mr. Harrelson indicated that it would cost \$33,000 to get this wiring and communication equipment put in at the Courthouse by 323 Link. Mr. Harrelson stated that this would include moving the equipment from Alma place at a later time and moving forward with the wiring that is needed at the Courthouse. The Budget Committee discussed funding this request from ARPA.

Commissioner Whitfield made a motion to approve \$33,000 from ARPA, seconded by Commissioner Shaver. The motion **PASSED UNANIMOUSLY** upon the vote.

Later at the Commission meeting, August 5, 2024, included an additional \$676 amendment in Fund 127 for the remaining funding needed for the AV system at the Courthouse.

Recommendations from Capital Projects and/or Purchasing Committee:

Commissioner Quillen presented the following items to be considered for funding through Capital Projects:

- \$6,986 – Shelves for vault (for storing wills) for Sessions Court
- \$500 – Painting in the Ag Department

Commissioner Shaver made a motion to approve Capital Projects recommendations from Fund 171-025, seconded by Commissioner Cullen. The motion **PASSED UNANIMOUSLY** upon the vote.

Commissioner Shaver informed the Committee that he spoke with Mayor Harris recently and Mayor Harris was requesting the status of the sidewalk repairs at the Courthouse that will be reimbursed by Loudon City. Commissioner Shaver indicated that the sidewalk repairs should be completed soon and Loudon City passed a resolution to approve the reimbursement back to the County.

All business concluded, Commissioner Shaver made the motion to adjourn; seconded by Commissioner Whitfield. The motion **PASSED UNANIMOUSLY** upon the vote. Thereupon, Mayor Bradshaw adjourned the meeting.



Mayor Rollen "Buddy" Bradshaw
Budget Committee Chair

Template Name: LGC Defined
Created by: LGC

Loudon County Finance
Summary Financial Statement by Fund
August 2024

User: Erin Rice
Date/Time: 8/28/2024 11:46 AM
Page 1 of 23

101 General		Year-To-Date			Month-To-Date		
Account	Description	Budget Estimate	Actual	% of Budget	Estimate Avg/Mth	Actual	% of Avg
Revenues							
40110	Current Property Tax	14,696,193.00	21,032.21	-0.14%	1,224,682.75	0.00	0.00%
40120	Trustee's Collections - Prior Year	130,000.00	(24,885.69)	19.14%	10,833.33	0.00	0.00%
40125	Trustee Collection-Bankruptcy	3,000.00	(3.85)	0.13%	250.00	0.00	0.00%
40130	Cir Clk/Clk & Master Collections-Pr Yr	75,000.00	(14,353.13)	19.14%	6,250.00	(14,353.13)	229.65%
40140	Interest And Penalty	25,000.00	(1,975.30)	7.90%	2,083.33	0.00	0.00%
40163	Payments In Lieu Of Taxes - Other	493,352.00	0.00	0.00%	41,112.67	0.00	0.00%
40210	Local Option Sales Tax	1,460,000.00	(203,283.31)	13.92%	121,666.67	(203,283.31)	167.08%
40220	Hotel/Motel Tax	510,000.00	(66,494.83)	13.04%	42,500.00	(66,494.83)	156.46%
40250	Litigation Tax - General	100,000.00	(11,500.87)	11.50%	8,333.33	(11,500.87)	138.01%
40260	Litigation Tax - Special Purpose	290,000.00	(28,385.09)	9.79%	24,166.67	(28,385.09)	117.46%
40270	Business Tax	536,400.00	(32,707.22)	6.10%	44,700.00	(32,707.22)	73.17%
40275	Mixed Drink Tax	29,000.00	(4,158.95)	14.34%	2,416.67	(4,158.95)	172.09%
40320	Bank Excise Tax	73,844.00	0.00	0.00%	6,153.67	0.00	0.00%
40330	Wholesale Beer Tax	120,000.00	(8,729.45)	7.27%	10,000.00	(8,729.45)	87.29%
41120	Animal Registration	63,500.00	(9,277.00)	14.61%	5,291.67	(3,539.00)	66.88%
41140	Cable TV Franchise	332,000.00	(72,328.69)	21.79%	27,666.67	(72,328.69)	261.43%
41510	Beer Permits	2,900.00	0.00	0.00%	241.67	0.00	0.00%
41520	Building Permits	600,000.00	(100,054.00)	16.68%	50,000.00	(41,417.00)	82.83%
41590	Other Permits	30,000.00	(3,967.00)	13.22%	2,500.00	(1,720.00)	68.80%
42180	DUI Treatment Fines	1,900.00	(228.47)	12.02%	158.33	(228.47)	144.30%
42190	Data Entry Fee - Circuit Court	930.00	(60.00)	6.45%	77.50	(60.00)	77.42%
42191	Courtroom Security Fee	5,300.00	(421.65)	7.96%	441.67	(421.65)	95.47%
42210	Fines	10,000.00	(95.00)	0.95%	833.33	(95.00)	11.40%
42220	Officers Costs	13,600.00	(1,620.01)	11.91%	1,133.33	(1,620.01)	142.94%
42240	Drug Control Fines	2,200.00	(143.45)	6.52%	183.33	(143.45)	78.25%
42250	Jail Fees	1,560.00	(66.97)	4.29%	130.00	(66.97)	51.52%
42290	Data Entry Fee - Criminal Court	1,000.00	(305.00)	30.50%	83.33	(305.00)	366.00%
42292	Victims Assistance Assessments	5,450.00	(326.00)	5.98%	454.17	(326.00)	71.78%
42310	Fines	45,000.00	(2,119.29)	4.71%	3,750.00	(2,119.29)	56.51%
42320	Officers Costs	113,000.00	(6,112.86)	5.41%	9,416.67	(6,112.86)	64.92%
42330	Games And Fish Fines	500.00	(37.80)	7.56%	41.67	(37.80)	90.72%
42340	Drug Control Fines	7,500.00	(510.86)	6.81%	625.00	(510.86)	81.74%
42350	Jail Fees	5,200.00	(434.62)	8.36%	433.33	(434.62)	100.30%
42380	DUI Treatment Fines	15,000.00	(1,041.20)	6.94%	1,250.00	(1,041.20)	83.30%
42390	Data Entry Fee - General Sessions	18,000.00	(2,151.63)	11.95%	1,500.00	(2,151.63)	143.44%
42391	Courtroom Security Fee	100,000.00	(10,576.91)	10.58%	8,333.33	(10,576.91)	126.92%
42392	Victims Assistance Assessments	24,550.00	(1,612.50)	6.57%	2,045.83	(1,612.50)	78.82%
42490	Data Entry Fee - Juvenile Court	510.00	(48.00)	9.41%	42.50	(48.00)	112.94%

Template Name: LGC Defined
Created by: LGC

Loudon County Finance
Summary Financial Statement by Fund
August 2024

User: Erin Rice
Date/Time: 8/28/2024 11:46 AM
Page 2 of 23

101 General		Year-To-Date			Month-To-Date		
Account	Description	Budget Estimate	Actual	% of Budget	Estimate Avg/Mth	Actual	% of Avg
42520	Officers Costs	2,500.00	(244.15)	9.77%	208.33	(244.15)	117.19%
42530	Data Entry Fee - Chancery Court	2,500.00	(330.00)	13.20%	208.33	(330.00)	158.40%
42591	Courtroom Security Fee	2,580.00	(255.50)	9.90%	215.00	(255.50)	118.84%
42610	Fines	5,000.00	(1,217.00)	24.34%	416.67	(1,217.00)	292.08%
42990	Other Fines, Forfeitures, And Penalties	0.00	(9.50)	0.00%	0.00	(9.50)	0.00%
43190	Other General Service Charges	35,000.00	0.00	0.00%	2,916.67	0.00	0.00%
43366	Greenbelt Late Applicaion Fee	50.00	0.00	0.00%	4.17	0.00	0.00%
43383	Additional Fees - Titling and	50,000.00	(4,644.00)	9.29%	4,166.67	(4,644.00)	111.46%
43392	Data Processing Fee -Register	30,000.00	(2,074.00)	6.91%	2,500.00	(2,074.00)	82.96%
43394	Data Processing Fee - Sheriff	6,000.00	(333.60)	5.56%	500.00	(333.60)	66.72%
43395	Sex Offender Registraion Fee	3,000.00	(400.00)	13.33%	250.00	(400.00)	160.00%
43396	Data Processing Fee - County Clerk	1,000.00	(117.00)	11.70%	83.33	(117.00)	140.40%
43399	Vehicle Insurance Coverage and	2,000.00	(915.00)	45.75%	166.67	(915.00)	549.00%
44110	Investment Income	100,000.00	(63,261.44)	63.26%	8,333.33	(140,803.27)	1,689.64%
44131	Commissary Sales	29,000.00	(2,683.59)	9.25%	2,416.67	(2,683.59)	111.05%
44160	Retirees' Insurance Payments	63,258.00	(20,824.39)	32.92%	5,271.50	(4,791.92)	90.90%
44161	Cobra Insurance Payments	2,873.00	(458.88)	15.97%	239.42	(229.44)	95.83%
44170	Miscellaneous Refunds	2,500.00	0.00	0.00%	208.33	0.00	0.00%
44530	Sale Of Equipment	500.00	0.00	0.00%	41.67	0.00	0.00%
44560	Damages Recovered From Individuals	0.00	(40.00)	0.00%	0.00	(40.00)	0.00%
44570	Contributions & Gifts	39,100.00	(3,392.00)	8.68%	3,258.33	(1,989.00)	61.04%
45510	County Clerk	520,000.00	(65,845.08)	12.66%	43,333.33	(65,845.08)	151.95%
45520	Circuit Court Clerk	120,000.00	(28,852.63)	24.04%	10,000.00	(28,852.63)	288.53%
45540	General Sessions Court Clerk	340,000.00	(43,199.78)	12.71%	28,333.33	(43,199.78)	152.47%
45550	Clerk And Master	85,000.00	(16,370.46)	19.26%	7,083.33	(16,370.46)	231.11%
45580	Register	500,000.00	(39,697.52)	7.94%	41,666.67	(39,697.52)	95.27%
45590	Sheriff	18,000.00	(2,516.90)	13.98%	1,500.00	(2,516.90)	167.79%
45610	Trustee	880,000.00	(28,419.88)	3.23%	73,333.33	0.00	0.00%
46110	Juvenile Services Program	9,000.00	0.00	0.00%	750.00	0.00	0.00%
46140	Aging Programs	13,300.00	0.00	0.00%	1,108.33	0.00	0.00%
46190	Other General Government Grants	70,000.00	0.00	0.00%	5,833.33	0.00	0.00%
46210	Law Enforcement Training Programs	38,400.00	0.00	0.00%	3,200.00	0.00	0.00%
46290	Other Public Safety Grants	690,000.00	0.00	0.00%	57,500.00	0.00	0.00%
46310	Health Department Programs	516,400.00	0.00	0.00%	43,033.33	0.00	0.00%
46830	Beer Tax	20,000.00	0.00	0.00%	1,666.67	0.00	0.00%
46835	Vehicle Certificate Of Title Fees	9,000.00	(832.60)	9.25%	750.00	(832.60)	111.01%
46840	Alcoholic Beverage Tax	96,000.00	(27,578.02)	28.73%	8,000.00	(27,578.02)	344.73%
46852	State Revenue Sharing -	60,000.00	(4,356.98)	7.26%	5,000.00	(4,356.98)	87.14%
46855	State Shared Sports Gaming Privilege	35,000.00	(16,367.71)	46.76%	2,916.67	(16,367.71)	561.18%

Template Name: LGC Defined
Created by: LGC

Loudon County Finance
Summary Financial Statement by Fund
August 2024

User: Erin Rice
Date/Time: 8/28/2024 11:46 AM
Page 3 of 23

101 General		Year-To-Date			Month-To-Date		
Account	Description	Budget Estimate	Actual	% of Budget	Estimate Avg/Mth	Actual	% of Avg
46915	Contracted Prisoner Board	275,000.00	(16,359.00)	5.95%	22,916.67	(16,359.00)	71.38%
46960	Registrar's Salary Supplement	15,000.00	0.00	0.00%	1,250.00	0.00	0.00%
46970	State Shared Sales Tax - Cities	6,000.00	(1,257.49)	20.96%	500.00	(1,257.49)	251.50%
46980	Other State Grants	22,000.00	0.00	0.00%	1,833.33	0.00	0.00%
46990	Other State Revenues	0.00	(359.19)	0.00%	0.00	(359.19)	0.00%
47220	Civil Defense Reimbursement	39,747.00	(39,746.58)	100.00%	3,312.25	(39,746.58)	1,199.99%
47235	Homeland Security Grants	19,000.00	0.00	0.00%	1,583.33	0.00	0.00%
47590	Other Federal Through State	123,692.00	0.00	0.00%	10,307.67	0.00	0.00%
48130	Contributions	24,859.00	(5,000.00)	20.11%	2,071.58	(5,000.00)	241.36%
48610	Donations	11,850.00	(889.14)	7.50%	987.50	(529.00)	53.57%
49700	Insurance Recovery	0.00	(23,114.68)	0.00%	0.00	(20,249.79)	0.00%
Total Revenues		24,875,498.00	(1,050,948.08)	4.22%	2,072,958.17	(1,006,725.46)	48.56%
Expenditures							
51100	County Commission	(242,847.00)	34,016.69	14.01%	(20,237.25)	15,322.44	75.71%
51210	Board Of Equalization	(3,440.00)	0.00	0.00%	(286.67)	0.00	0.00%
51220	Beer Board	(3,000.00)	0.00	0.00%	(250.00)	0.00	0.00%
51240	Other Boards And Committees	(9,500.00)	0.00	0.00%	(791.67)	0.00	0.00%
51300	County Mayor/Executive	(243,490.00)	41,280.98	16.95%	(20,290.83)	20,925.31	103.13%
51310	Personnel Office	(139,717.00)	31,659.91	22.66%	(11,643.08)	13,877.59	119.19%
51400	County Attorney	(380,000.00)	27,932.20	7.35%	(31,666.67)	27,932.20	88.21%
51500	Election Commission	(544,939.00)	159,794.41	29.32%	(45,411.58)	89,234.28	196.50%
51600	Register Of Deeds	(448,208.00)	97,002.20	21.64%	(37,350.67)	39,127.99	104.76%
51720	Planning	(190,934.00)	29,095.94	15.24%	(15,911.17)	16,232.04	102.02%
51750	Codes Compliance	(423,577.00)	67,816.87	16.01%	(35,298.08)	36,620.31	103.75%
51760	Geographical Information Systems	(83,345.00)	15,825.07	18.99%	(6,945.42)	7,681.40	110.60%
51800	County Buildings	(1,618,943.00)	481,348.45	29.73%	(134,911.92)	116,573.96	86.41%
51810	Other Facilities	0.00	8,155.74	0.00%	0.00	7,273.58	0.00%
51900	Other General Administration	(379,477.00)	435,441.06	114.75%	(31,623.08)	1,027.74	3.25%
51910	Preservation Of Records	(1,000.00)	0.00	0.00%	(83.33)	0.00	0.00%
52100	Accounting And Budgeting	(840,500.00)	137,108.00	16.31%	(70,041.67)	59,491.99	84.94%
52200	Purchasing	(320,662.00)	49,727.69	15.51%	(26,721.83)	30,069.81	112.53%
52300	Property Assessor's Office	(686,086.00)	151,356.05	22.06%	(57,173.83)	48,594.10	84.99%
52400	County Trustee's Office	(463,966.00)	122,149.13	26.33%	(38,663.83)	43,060.26	111.37%
52500	County Clerk's Office	(1,031,359.00)	158,685.35	15.39%	(85,946.58)	79,809.81	92.86%
52600	Data Processing	(229,126.00)	43,447.08	18.96%	(19,093.83)	18,743.39	98.16%
53100	Circuit Court	(580,338.00)	125,753.82	21.67%	(48,361.50)	48,237.28	99.74%
53300	General Sessions Court	(885,131.00)	197,164.27	22.28%	(73,760.92)	84,209.06	114.16%
53310	General Sessions Judge	(596,013.00)	94,728.57	15.89%	(49,667.75)	50,763.46	102.21%

Template Name: LGC Defined
Created by: LGC

Loudon County Finance
Summary Financial Statement by Fund
August 2024

User: Erin Rice
Date/Time: 8/28/2024 11:46 AM
Page 4 of 23

101 General		Year-To-Date			Month-To-Date		
Account	Description	Budget Estimate	Actual	% of Budget	Estimate Avg/Mth	Actual	% of Avg
53400	Chancery Court	(458,539.00)	109,912.88	23.97%	(38,211.58)	38,089.90	99.68%
53500	Juvenile Court	(369,199.00)	72,964.34	19.76%	(30,766.58)	36,456.02	118.49%
53700	Judicial Commissioners	(86,771.00)	12,685.70	14.62%	(7,230.92)	8,882.28	122.84%
53900	Other Administration Of Justice	(19,300.00)	4,005.00	20.75%	(1,608.33)	605.00	37.62%
53920	Courtroom Security	(1,500.00)	394.26	26.28%	(125.00)	343.16	274.53%
53930	Victim Assistance Programs	(30,000.00)	1,938.50	6.46%	(2,500.00)	1,938.50	77.54%
54110	Sheriff's Department	(7,426,414.00)	1,508,463.04	20.31%	(618,867.83)	721,752.18	116.62%
54120	Special Patrols	(83,000.00)	7,301.84	8.80%	(6,916.67)	6,301.84	91.11%
54130	Traffic Control	(34,500.00)	265.66	0.77%	(2,875.00)	265.66	9.24%
54160	Administration Of The Sexual Offender	(12,250.00)	0.00	0.00%	(1,020.83)	0.00	0.00%
54210	Jail	(5,050,732.00)	1,204,306.82	23.84%	(420,894.33)	411,773.05	97.83%
54320	Rural Fire Protection	(526,500.00)	526,500.00	100.00%	(43,875.00)	526,500.00	1,200.00%
54410	Civil Defense	(227,056.00)	46,235.66	20.36%	(18,921.33)	17,002.71	89.86%
54490	Other Emergency Management	(19,000.00)	0.00	0.00%	(1,583.33)	0.00	0.00%
54610	County Coroner/Medical Examiner	(125,000.00)	7,825.00	6.26%	(10,416.67)	7,825.00	75.12%
54900	Other Public Safety	(545,000.00)	545,000.00	100.00%	(45,416.67)	545,000.00	1,200.00%
55110	Local Health Center	(41,388.00)	10,442.97	25.23%	(3,449.00)	621.66	18.02%
55120	Rabies And Animal Control	(553,656.00)	142,618.12	25.76%	(46,138.00)	46,802.76	101.44%
55190	Other Local Health Services	(516,400.00)	77,181.68	14.95%	(43,033.33)	52,483.05	121.96%
56300	Senior Citizens Assistance	(341,347.00)	72,554.93	21.26%	(28,445.58)	32,760.97	115.17%
57100	Agricultural Extension Service	(213,020.00)	2,815.65	1.32%	(17,751.67)	121.08	0.68%
57500	Soil Conservation	(54,937.00)	5,992.68	10.91%	(4,578.08)	5,332.74	116.48%
57700	Flood Control	(2,000.00)	2,000.00	100.00%	(166.67)	2,000.00	1,200.00%
57800	Storm Water Management	(4,000.00)	0.00	0.00%	(333.33)	0.00	0.00%
58110	Tourism	(120,000.00)	120,000.00	100.00%	(10,000.00)	120,000.00	1,200.00%
58120	Industrial Development	(183,106.00)	183,105.04	100.00%	(15,258.83)	177,174.00	1,161.12%
58130	Housing And Urban Development	(6,750.00)	3,000.00	44.44%	(562.50)	3,000.00	533.33%
58300	Veteran's Services	(131,459.00)	12,294.46	9.35%	(10,954.92)	6,896.43	62.95%
58500	Contributions To Other Agencies	(78,000.00)	70,000.00	89.74%	(6,500.00)	70,000.00	1,076.92%
58600	Employee Benefits	(217,158.00)	173,172.78	79.75%	(18,096.50)	859.26	4.75%
58900	Miscellaneous	(555,000.00)	6,878.67	1.24%	(46,250.00)	0.00	0.00%
95100	Capital Projects Donated To School	(450,000.00)	0.00	0.00%	(37,500.00)	0.00	0.00%
99100	Transfers Out	(86,915.00)	0.00	0.00%	(7,242.92)	0.00	0.00%
	Total Expenditures	(28,915,495.00)	7,439,345.16	25.73%	(2,409,624.58)	3,695,595.25	153.37%
Total	101 General	(4,039,997.00)	6,388,397.08	158.13%	(336,666.42)	2,688,869.79	798.67%

Template Name: LGC Defined
Created by: LGC

Loudon County Finance
Summary Financial Statement by Fund
August 2024

User: Erin Rice
Date/Time: 8/28/2024 11:46 AM
Page 5 of 23

112 Courthouse & Jail Maintenance		Year-To-Date			Month-To-Date		
Account	Description	Budget Estimate	Actual	% of Budget	Estimate Avg/Mth	Actual	% of Avg
Revenues							
40266	Litigation Tax-Jail, Wrkhse,	100,000.00	(11,072.07)	11.07%	8,333.33	(11,072.07)	132.86%
	Total Revenues	100,000.00	(11,072.07)	11.07%	8,333.33	(11,072.07)	132.86%
Expenditures							
58900	Miscellaneous	(2,000.00)	110.08	5.50%	(166.67)	0.00	0.00%
99100	Transfers Out	(100,000.00)	0.00	0.00%	(8,333.33)	0.00	0.00%
	Total Expenditures	(102,000.00)	110.08	0.11%	(8,500.00)	0.00	0.00%
Total	112 Courthouse & Jail Maintenance	(2,000.00)	(10,961.99)	-548.10%	(166.67)	(11,072.07)	-

Template Name: LGC Defined
Created by: LGC

Loudon County Finance
Summary Financial Statement by Fund
August 2024

User: Erin Rice
Date/Time: 8/28/2024 11:46 AM
Page 6 of 23

114 Law Library		Year-To-Date			Month-To-Date		
Account	Description	Budget Estimate	Actual	% of Budget	Estimate Avg/Mth	Actual	% of Avg
Revenues							
40260	Litigation Tax - Special Purpose	4,300.00	(446.01)	10.37%	358.33	(446.01)	124.47%
	Total Revenues	4,300.00	(446.01)	10.37%	358.33	(446.01)	124.47%
Expenditures							
56500	Libraries	(3,600.00)	1,079.88	30.00%	(300.00)	0.00	0.00%
58900	Miscellaneous	(150.00)	4.41	2.94%	(12.50)	0.00	0.00%
	Total Expenditures	(3,750.00)	1,084.29	28.91%	(312.50)	0.00	0.00%
Total	114 Law Library	550.00	638.28	-116.05%	45.83	(446.01)	973.11%

Template Name: LGC Defined
Created by: LGC

Loudon County Finance
Summary Financial Statement by Fund
August 2024

User: Erin Rice
Date/Time: 8/28/2024 11:46 AM
Page 7 of 23

115 Public Library		Year-To-Date			Month-To-Date		
Account	Description	Budget Estimate	Actual	% of Budget	Estimate Avg/Mth	Actual	% of Avg
Revenues							
40110	Current Property Tax	314,207.00	472.34	-0.15%	26,183.92	0.00	0.00%
40120	Trustee's Collections - Prior Year	3,500.00	(558.56)	15.96%	291.67	0.00	0.00%
40125	Trustee's Collections - Bankruptcy	200.00	(0.09)	0.05%	16.67	0.00	0.00%
40130	Cir Clk/Clk & Master Collections-Pr Yr	2,000.00	(420.65)	21.03%	166.67	(420.65)	252.39%
40140	Interest And Penalty	900.00	(44.36)	4.93%	75.00	0.00	0.00%
40163	Payments In Lieu Of Taxes - Other	10,300.00	0.00	0.00%	858.33	0.00	0.00%
40320	Bank Excise Tax	2,400.00	0.00	0.00%	200.00	0.00	0.00%
43350	Copy Fees	4,165.00	(883.47)	21.21%	347.08	(401.92)	115.80%
43360	Library Fees	3,290.00	(751.00)	22.83%	274.17	(118.45)	43.20%
44130	Sale Of Materials And Supplies	5.00	0.00	0.00%	0.42	0.00	0.00%
44160	Retirees' Insurance Payments	7,303.00	(2,082.78)	28.52%	608.58	(464.37)	76.30%
44570	Contributions & Gifts	1,000.00	(250.05)	25.01%	83.33	(126.55)	151.86%
48130	Contributions	23,625.00	(10,500.00)	44.44%	1,968.75	0.00	0.00%
48610	Donations	21,400.00	(21,200.00)	99.07%	1,783.33	0.00	0.00%
Total Revenues		394,295.00	(36,218.62)	9.19%	32,857.92	(1,531.94)	4.66%
Expenditures							
56500	Libraries	(442,715.00)	106,650.52	24.09%	(36,892.92)	38,224.72	103.61%
Total Expenditures		(442,715.00)	106,650.52	24.09%	(36,892.92)	38,224.72	103.61%
Total	115 Public Library	(48,420.00)	70,431.90	145.46%	(4,035.00)	36,692.78	909.36%

Template Name: LGC Defined
Created by: LGC

Loudon County Finance
Summary Financial Statement by Fund
August 2024

User: Erin Rice
Date/Time: 8/28/2024 11:46 AM
Page 8 of 23

116 Solid Waste/Sanitation		Year-To-Date			Month-To-Date		
Account	Description	Budget Estimate	Actual	% of Budget	Estimate Avg/Mth	Actual	% of Avg
Revenues							
40210	Local Option Sales Tax	540,000.00	(75,186.98)	13.92%	45,000.00	(75,186.98)	167.08%
44145	Sale Of Recycled Materials	100,000.00	(17,409.24)	17.41%	8,333.33	(12,973.57)	155.68%
44160	Retirees' Insurance Payments	435.00	(116.97)	26.89%	36.25	(68.38)	188.63%
44170	Miscellaneous Refunds	225.00	0.00	0.00%	18.75	0.00	0.00%
46430	Litter Program	49,200.00	(4,180.30)	8.50%	4,100.00	(4,180.30)	101.96%
46990	Other State Revenues	50,000.00	(11,490.87)	22.98%	4,166.67	(11,490.87)	275.78%
	Total Revenues	739,860.00	(108,384.36)	14.65%	61,655.00	(103,900.10)	168.52%
Expenditures							
55720	Sanitation Education/Information	(49,200.00)	7,067.29	14.36%	(4,100.00)	1,313.09	32.03%
55732	Convenience Centers	(1,174,235.00)	403,233.93	34.34%	(97,852.92)	102,619.32	104.87%
55739	Other Waste Collection	(50,000.00)	8,303.00	16.61%	(4,166.67)	0.00	0.00%
	Total Expenditures	(1,273,435.00)	418,604.22	32.87%	(106,119.58)	103,932.41	97.94%
Total	116 Solid Waste/Sanitation	(533,575.00)	310,219.86	58.14%	(44,464.58)	32.31	0.07%

Template Name: LGC Defined
Created by: LGC

Loudon County Finance
Summary Financial Statement by Fund
August 2024

User: Erin Rice
Date/Time: 8/28/2024 11:46 AM
Page 9 of 23

119 Industrial/Economic Development		Year-To-Date			Month-To-Date		
Account	Description	Budget Estimate	Actual	% of Budget	Estimate Avg/Mth	Actual	% of Avg
Revenues							
44120	Lease/Rentals/PPP	5,300.00	(1,324.98)	25.00%	441.67	(441.66)	100.00%
	Total Revenues	5,300.00	(1,324.98)	25.00%	441.67	(441.66)	100.00%
Expenditures							
58120	Industrial Development	(5,300.00)	8.84	0.17%	(441.67)	0.00	0.00%
	Total Expenditures	(5,300.00)	8.84	0.17%	(441.67)	0.00	0.00%
Total	119 Industrial/Economic Development	0.00	(1,316.14)	100.00%	0.00	(441.66)	0.00%

Template Name: LGC Defined
Created by: LGC

Loudon County Finance
Summary Financial Statement by Fund
August 2024

User: Erin Rice
Date/Time: 8/28/2024 11:46 AM
Page 10 of 23

121 Special Purpose - Opioid		Year-To-Date			Month-To-Date		
Account	Description	Budget Estimate	Actual	% of Budget	Estimate Avg/Mth	Actual	% of Avg
Revenues							
44110	Investment Income	1,000.00	(1,405.82)	140.58%	83.33	0.00	0.00%
46845	Opioid Settlement Funds - TN	266,936.00	0.00	0.00%	22,244.67	0.00	0.00%
48991	Opioid Settlement Funds - Past	37,805.00	(68,631.52)	181.54%	3,150.42	(68,631.52)	2,178.49%
	Total Revenues	305,741.00	(70,037.34)	22.91%	25,478.42	(68,631.52)	269.37%
Expenditures							
54110	Sheriff's Department	0.00	0.00	0.00%	0.00	0.00	0.00%
	Total Expenditures	0.00	0.00	100.00%	0.00	0.00	0.00%
Total	121 Special Purpose - Opioid	305,741.00	(70,037.34)	22.91%	25,478.42	(68,631.52)	269.37%

Template Name: LGC Defined
Created by: LGC

Loudon County Finance
Summary Financial Statement by Fund
August 2024

User: Erin Rice
Date/Time: 8/28/2024 11:46 AM
Page 11 of 23

122 Drug Control		Year-To-Date			Month-To-Date		
Account	Description	Budget Estimate	Actual	% of Budget	Estimate Avg/Mth	Actual	% of Avg
Revenues							
42240	Drug Control Fines	10,000.00	(416.86)	4.17%	833.33	(416.86)	50.02%
42340	Drug Control Fines	7,000.00	(510.86)	7.30%	583.33	(510.86)	87.58%
42910	Proceeds From Confiscated Property	70,000.00	0.00	0.00%	5,833.33	0.00	0.00%
43370	Telephone Commissions	100,000.00	0.00	0.00%	8,333.33	0.00	0.00%
44530	Sale Of Equipment	30,000.00	0.00	0.00%	2,500.00	0.00	0.00%
44570	Contributions & Gifts	10,000.00	(520.00)	5.20%	833.33	(520.00)	62.40%
Total Revenues		227,000.00	(1,447.72)	0.64%	18,916.67	(1,447.72)	7.65%
Expenditures							
54150	Drug Enforcement	(160,500.00)	53,687.18	33.45%	(13,375.00)	45,186.95	337.85%
Total Expenditures		(160,500.00)	53,687.18	33.45%	(13,375.00)	45,186.95	337.85%
Total	122 Drug Control	66,500.00	52,239.46	-78.56%	5,541.67	43,739.23	-789.28%

Template Name: LGC Defined
Created by: LGC

Loudon County Finance
Summary Financial Statement by Fund
August 2024

User: Erin Rice
Date/Time: 8/28/2024 11:46 AM
Page 12 of 23

127 Other General Government Special Revenue			Year-To-Date			Month-To-Date		
Account	Description	Budget Estimate	Actual	% of Budget	Estimate Avg/Mth	Actual	% of Avg	
Revenues								
44110	Investment Income	45,000.00	(9,307.94)	20.68%	3,750.00	0.00	0.00%	
	Total Revenues	45,000.00	(9,307.94)	20.68%	3,750.00	0.00	0.00%	
Expenditures								
91401	ARPA Grant #1-PUBLIC SAFETY	(5,837.00)	0.00	0.00%	(486.42)	0.00	0.00%	
91402	ARPA Grant #2 - HIGHWAY	(250,000.00)	230,383.61	92.15%	(20,833.33)	0.00	0.00%	
91403	American Rescue Plan Act Grant #3	(350,829.00)	142,213.52	40.54%	(29,235.75)	78,895.52	269.86%	
91404	American Rescue Plan Act Grant #4	(520,000.00)	0.00	0.00%	(43,333.33)	0.00	0.00%	
91405	American Rescue Plan Act Grant #5	(701,191.00)	0.00	0.00%	(58,432.58)	0.00	0.00%	
	Total Expenditures	(1,827,857.00)	372,597.13	20.38%	(152,321.42)	78,895.52	51.80%	
Total	127 Other General Government Special	(1,782,857.00)	363,289.19	20.38%	(148,571.42)	78,895.52	53.10%	

Template Name: LGC Defined
Created by: LGC

Loudon County Finance
Summary Financial Statement by Fund
August 2024

User: Erin Rice
Date/Time: 8/28/2024 11:46 AM
Page 13 of 23

128 Other Special Revenue Fund		Year-To-Date			Month-To-Date		
Account	Description	Budget Estimate	Actual	% of Budget	Estimate Avg/Mth	Actual	% of Avg
Revenues							
47700	Asset Forfeiture Funds	1,000.00	0.00	0.00%	83.33	0.00	0.00%
	Total Revenues	1,000.00	0.00	0.00%	83.33	0.00	0.00%
Expenditures							
54150	Drug Enforcement	(1,000.00)	0.00	0.00%	(83.33)	0.00	0.00%
	Total Expenditures	(1,000.00)	0.00	0.00%	(83.33)	0.00	0.00%
Total	128 Other Special Revenue Fund	0.00	0.00	100.00%	0.00	0.00	0.00%

Template Name: LGC Defined
Created by: LGC

Loudon County Finance
Summary Financial Statement by Fund
August 2024

User: Erin Rice
Date/Time: 8/28/2024 11:46 AM
Page 14 of 23

131 Highway/Public Works		Year-To-Date			Month-To-Date		
Account	Description	Budget Estimate	Actual	% of Budget	Estimate Avg/Mth	Actual	% of Avg
Revenues							
40110	Current Property Tax	623,305.00	893.46	-0.14%	51,942.08	0.00	0.00%
40120	Trustee's Collections - Prior Year	9,000.00	(1,056.58)	11.74%	750.00	0.00	0.00%
40125	Bankruptcy	50.00	(0.22)	0.44%	4.17	0.00	0.00%
40130	Cir Clk/Clk & Master Collections-Pr Yr	4,000.00	(747.57)	18.69%	333.33	(747.57)	224.27%
40140	Interest And Penalty	2,000.00	(83.89)	4.19%	166.67	0.00	0.00%
40163	Payments In Lieu Of Taxes - Other	18,197.00	0.00	0.00%	1,516.42	0.00	0.00%
40280	Mineral Severance Tax	90,000.00	0.00	0.00%	7,500.00	0.00	0.00%
40320	Bank Excise Tax	4,000.00	0.00	0.00%	333.33	0.00	0.00%
44130	Sale Of Materials And Supplies	5,000.00	(1,215.00)	24.30%	416.67	(540.00)	129.60%
44145	Sale Of Recycled Materials	200.00	0.00	0.00%	16.67	0.00	0.00%
44160	Retirees' Insurance Payments	26,700.00	(2,245.17)	8.41%	2,225.00	(521.28)	23.43%
44170	Miscellaneous Refunds	2,000.00	0.00	0.00%	166.67	0.00	0.00%
46410	Bridge Program	777,332.00	0.00	0.00%	64,777.67	0.00	0.00%
46420	State Aid Program	1,199,518.00	0.00	0.00%	99,959.83	0.00	0.00%
46920	Gasoline And Motor Fuel Tax	2,390,925.00	(211,197.94)	8.83%	199,243.75	(211,197.94)	106.00%
46925	Hybrid/Electric Vehicle Registration	0.00	(2,249.73)	0.00%	0.00	(2,249.73)	0.00%
46930	Petroleum Special Tax	31,000.00	(3,030.54)	9.78%	2,583.33	(3,030.54)	117.31%
49800	Transfers In	86,915.00	0.00	0.00%	7,242.92	0.00	0.00%
Total Revenues		5,270,142.00	(220,933.18)	4.19%	439,178.50	(218,287.06)	49.70%
Expenditures							
61000	Administration	(1,240,585.00)	195,927.54	15.79%	(103,382.08)	136,422.22	131.96%
62000	Highway And Bridge Maintenance	(1,057,000.00)	895,300.00	84.70%	(88,083.33)	47,000.00	53.36%
63100	Operation And Maintenance Of	(362,000.00)	290,277.44	80.19%	(30,166.67)	(44.46)	-0.15%
65000	Other Charges	(200,556.00)	191,092.47	95.28%	(16,713.00)	1,199.16	7.18%
66000	Employee Benefits	(636,836.00)	139,004.25	21.83%	(53,069.67)	46,153.33	86.97%
68000	Capital Outlay	(2,148,131.00)	218,642.92	10.18%	(179,010.92)	82,534.84	46.11%
Total Expenditures		(5,645,108.00)	1,930,244.62	34.19%	(470,425.67)	313,265.09	66.59%
Total	131 Highway/Public Works	(374,966.00)	1,709,311.44	455.86%	(31,247.17)	94,978.03	303.96%

Template Name: LGC Defined
Created by: LGC

Loudoun County Finance
Summary Financial Statement by Fund
August 2024

User: Erin Rice
Date/Time: 8/28/2024 11:46 AM
Page 15 of 23

141 General Purpose School		Year-To-Date			Month-To-Date		
Account	Description	Budget Estimate	Actual	% of Budget	Estimate Avg/Mth	Actual	% of Avg
Revenues							
40110	Current Property Tax	11,805,207.00	28,233.22	-0.24%	983,767.25	0.00	0.00%
40120	Trustee's Collections - Prior Year	100,000.00	(20,669.30)	20.67%	8,333.33	0.00	0.00%
40125	Bankruptcy	15,000.00	(3.36)	0.02%	1,250.00	0.00	0.00%
40130	Cir Clk/Clk & Master Collections-Pr Yr	175,000.00	(13,025.59)	7.44%	14,583.33	(13,025.59)	89.32%
40140	Interest And Penalty	35,000.00	(1,640.74)	4.69%	2,916.67	0.00	0.00%
40163	Payments In Lieu Of Taxes - Other	324,645.00	0.00	0.00%	27,053.75	0.00	0.00%
40210	Local Option Sales Tax	4,800,000.00	(623,328.80)	12.99%	400,000.00	(623,328.80)	155.83%
40275	Mixed Drink Tax	35,000.00	(4,158.94)	11.88%	2,916.67	(4,158.94)	142.59%
40320	Bank Excise Tax	30,000.00	0.00	0.00%	2,500.00	0.00	0.00%
41110	Marriage Licenses	1,200.00	(104.50)	8.71%	100.00	(104.50)	104.50%
43570	Receipts From Individual Schools	15,000.00	0.00	0.00%	1,250.00	0.00	0.00%
43990	Other Charges For Services	5,550.00	0.00	0.00%	462.50	0.00	0.00%
44110	Investment Income	75,000.00	(46,600.50)	62.13%	6,250.00	0.00	0.00%
44160	Retirees' Insurance Payments	62,400.00	(26,176.94)	41.95%	5,200.00	(5,362.33)	103.12%
44170	Miscellaneous Refunds	2,000.00	(81.00)	4.05%	166.67	(81.00)	48.60%
46510	Tennessee Investment in Student	32,649,135.00	(3,276,678.57)	10.04%	2,720,761.25	(3,276,678.57)	120.43%
46515	Early Childhood Education	765,303.00	0.00	0.00%	63,775.25	0.00	0.00%
46590	Other State Education Funds	58,467.00	(5,847.09)	10.00%	4,872.25	(5,847.09)	120.01%
46610	Career Ladder Program	67,000.00	0.00	0.00%	5,583.33	0.00	0.00%
46851	State Revenue Sharing -T.V.A.	1,150,000.00	0.00	0.00%	95,833.33	0.00	0.00%
47590	Other Federal Through State	210,632.00	0.00	0.00%	17,552.67	0.00	0.00%
47640	Rotc Reimbursement	71,000.00	0.00	0.00%	5,916.67	0.00	0.00%
48610	Donations	0.00	(16,606.67)	0.00%	0.00	(10,160.67)	0.00%
Total Revenues		52,452,539.00	(4,006,688.78)	7.64%	4,371,044.92	(3,938,747.49)	90.11%
Expenditures							
71100	Regular Instruction Program	(30,383,336.00)	2,935,668.36	9.66%	(2,531,944.67)	2,496,888.54	98.62%
71200	Special Education Program	(4,281,951.00)	404,149.97	9.44%	(356,829.25)	354,173.45	99.26%
71300	Vocational Education Program	(1,830,594.00)	281,465.19	15.38%	(152,549.50)	176,600.30	115.77%
72110	Attendance	(84,901.00)	14,447.36	17.02%	(7,075.08)	7,543.38	106.62%
72120	Health Services	(880,498.00)	110,422.08	12.54%	(73,374.83)	97,588.52	133.00%
72130	Other Student Support	(1,861,605.00)	232,940.56	12.51%	(155,133.75)	193,993.32	125.05%
72210	Regular Instruction Program	(2,344,552.00)	264,366.03	11.28%	(195,379.33)	186,936.05	95.68%
72220	Special Education Program	(636,496.00)	146,546.05	23.02%	(53,041.33)	124,775.05	235.24%
72230	Vocational Education Program	(191,623.00)	34,737.75	18.13%	(15,968.58)	18,204.34	114.00%
72250	Technology	(1,262,734.00)	532,458.81	42.17%	(105,227.83)	64,674.55	61.46%
72310	Board Of Education	(877,735.00)	281,834.13	32.11%	(73,144.58)	14,188.95	19.40%
72320	Office Of The Superintendent	(432,939.00)	134,381.83	31.04%	(36,078.25)	29,350.41	81.35%

Template Name: LGC Defined
Created by: LGC

Loudon County Finance
Summary Financial Statement by Fund
August 2024

User: Erin Rice
Date/Time: 8/28/2024 11:46 AM
Page 16 of 23

141 General Purpose School		Year-To-Date			Month-To-Date		
Account	Description	Budget Estimate	Actual	% of Budget	Estimate Avg/Mth	Actual	% of Avg
72410	Office Of The Principal	(1,399,492.00)	305,908.25	21.86%	(116,624.33)	99,893.66	85.65%
72510	Fiscal Services	(107,438.00)	17,472.16	16.26%	(8,953.17)	8,736.09	97.58%
72610	Operation Of Plant	(4,708,418.00)	2,523,426.56	53.59%	(392,368.17)	272,877.01	69.55%
72620	Maintenance Of Plant	(277,000.00)	97,296.33	35.13%	(23,083.33)	46,790.03	202.70%
72710	Transportation	(2,538,806.00)	25,607.46	1.01%	(211,567.17)	10,187.72	4.82%
72901	COVID-19 Expenditures	(50,000.00)	0.00	0.00%	(4,166.67)	0.00	0.00%
73300	Community Services	(57,998.00)	19,862.24	34.25%	(4,833.17)	8,274.07	171.19%
73400	Early Childhood Education	(1,016,109.00)	160,948.87	15.84%	(84,675.75)	74,007.31	87.40%
76100	Regular Capital Outlay	0.00	17,317.05	0.00%	0.00	17,317.05	0.00%
Total Expenditures		(55,224,225.00)	8,541,257.04	15.47%	(4,602,018.75)	4,302,999.80	93.50%
Total	141 General Purpose School	(2,771,686.00)	4,534,568.26	163.60%	(230,973.83)	364,252.31	157.70%

Template Name: LGC Defined
Created by: LGC

Loudon County Finance
Summary Financial Statement by Fund
August 2024

User: Erin Rice
Date/Time: 8/28/2024 11:46 AM
Page 17 of 23

142 School Federal Projects		Year-To-Date			Month-To-Date		
Account	Description	Budget Estimate	Actual	% of Budget	Estimate Avg/Mth	Actual	% of Avg
Revenues							
47131	Vocational Educ - Basic Grants To	86,192.25	0.00	0.00%	7,182.69	0.00	0.00%
47141	Title 1 Grants To Local Educ Agencies	1,003,249.72	(74,080.88)	7.38%	83,604.14	(74,080.88)	88.61%
47143	Special Education - Grants To States	1,121,331.00	(96,654.89)	8.62%	93,444.25	(96,654.89)	103.44%
47145	Special Education Preschool Grants	24,667.00	0.00	0.00%	2,055.58	0.00	0.00%
47146	English Language Acquisition Grants	30,101.98	(50.83)	0.17%	2,508.50	(50.83)	2.03%
47147	Safe And Drug-Free Schools-St Grants	1,650.00	(108.48)	6.57%	137.50	(108.48)	78.89%
47189	Eisenhower Prof Development State	180,978.49	(14,019.20)	7.75%	15,081.54	(14,019.20)	92.96%
47590	Other Federal Through State	80,895.03	0.00	0.00%	6,741.25	0.00	0.00%
	Total Revenues	2,529,065.47	(184,914.28)	7.31%	210,755.46	(184,914.28)	87.74%
Expenditures							
71100	Regular Instruction Program	(754,783.36)	519,337.07	68.81%	(62,898.61)	495,862.12	788.35%
71200	Special Education Program	(831,281.00)	76,362.23	9.19%	(69,273.42)	76,362.23	110.23%
71300	Vocational Education Program	(50,000.00)	44,609.81	89.22%	(4,166.67)	38,529.81	924.72%
72130	Other Student Support	(88,328.69)	9,295.56	10.52%	(7,360.72)	6,341.40	86.15%
72210	Regular Instruction Program	(485,655.42)	51,348.16	10.57%	(40,471.29)	28,465.67	70.34%
72220	Special Education Program	(314,717.00)	140,628.69	44.68%	(26,226.42)	119,309.07	454.92%
72230	Vocational Education Program	(4,300.00)	907.43	21.10%	(358.33)	514.00	143.44%
72710	Transportation	0.00	1,000.00	0.00%	0.00	1,000.00	0.00%
	Total Expenditures	(2,529,065.47)	843,488.95	33.35%	(210,755.46)	766,384.30	363.64%
Total	142 School Federal Projects	0.00	658,574.67	100.00%	0.00	581,470.02	0.00%

Template Name: LGC Defined
Created by: LGC

Loudon County Finance
Summary Financial Statement by Fund
August 2024

User: Erin Rice
Date/Time: 8/28/2024 11:46 AM
Page 18 of 23

143 Central Cafeteria		Year-To-Date			Month-To-Date		
Account	Description	Budget Estimate	Actual	% of Budget	Estimate Avg/Mth	Actual	% of Avg
Revenues							
43521	Lunch Payments - Children	560,000.00	(879.75)	0.16%	46,666.67	(879.75)	1.89%
43522	Lunch Payments - Adults	28,000.00	0.00	0.00%	2,333.33	0.00	0.00%
43525	A La Carte Sales	5,000.00	0.00	0.00%	416.67	0.00	0.00%
43570	Receipts From Individual Schools	100.00	0.00	0.00%	8.33	0.00	0.00%
44110	Investment Income	5,000.00	(3,106.70)	62.13%	416.67	0.00	0.00%
46520	School Food Service	27,197.00	0.00	0.00%	2,266.42	0.00	0.00%
47111	USDA School Lunch Program	1,527,566.00	0.00	0.00%	127,297.17	0.00	0.00%
47113	Breakfast	542,222.00	0.00	0.00%	45,185.17	0.00	0.00%
47114	USDA - Other	163,077.00	0.00	0.00%	13,589.75	0.00	0.00%
47990	Other Direct Federal Revenue	263,000.00	(22,205.00)	8.44%	21,916.67	0.00	0.00%
Total Revenues		3,121,162.00	(26,191.45)	0.84%	260,096.83	(879.75)	0.34%
Expenditures							
73100	Food Service	(3,121,162.00)	1,470,285.76	47.11%	(260,096.83)	109,096.47	41.94%
Total Expenditures		(3,121,162.00)	1,470,285.76	47.11%	(260,096.83)	109,096.47	41.94%
Total	143 Central Cafeteria	0.00	1,444,094.31	100.00%	0.00	108,216.72	0.00%

Template Name: LGC Defined
Created by: LGC

Loudon County Finance
Summary Financial Statement by Fund
August 2024

User: Erin Rice
Date/Time: 8/28/2024 11:46 AM
Page 19 of 23

151 General Debt Service		Year-To-Date			Month-To-Date		
Account	Description	Budget Estimate	Actual	% of Budget	Estimate Avg/Mth	Actual	% of Avg
Revenues							
40110	Current Property Tax	980,938.00	1,405.67	-0.14%	81,744.83	0.00	0.00%
40120	Trustee's Collections - Prior Year	10,000.00	(1,662.81)	16.63%	833.33	0.00	0.00%
40125	Bankruptcy	1,000.00	(0.28)	0.03%	83.33	0.00	0.00%
40130	Cir Clk/Clk & Master Collections-Pr Yr	10,000.00	(2,252.60)	22.53%	833.33	(2,252.60)	270.31%
40140	Interest And Penalty	6,000.00	(132.08)	2.20%	500.00	0.00	0.00%
40163	Payments In Lieu Of Taxes - Other	37,706.00	0.00	0.00%	3,142.17	0.00	0.00%
40320	Bank Excise Tax	1,000.00	0.00	0.00%	83.33	0.00	0.00%
44110	Investment Income	3,000.00	(4,660.05)	155.34%	250.00	0.00	0.00%
48140	Contracted Services	203,472.00	0.00	0.00%	16,956.00	0.00	0.00%
49800	Transfers In	100,000.00	0.00	0.00%	8,333.33	0.00	0.00%
Total Revenues		1,353,116.00	(7,302.15)	0.54%	112,759.67	(2,252.60)	2.00%
Expenditures							
82110	General Government	(895,000.00)	0.00	0.00%	(74,583.33)	0.00	0.00%
82210	General Government	(425,428.00)	0.00	0.00%	(35,452.33)	0.00	0.00%
82310	General Government	(240,972.00)	33,961.82	14.09%	(20,081.00)	0.00	0.00%
Total Expenditures		(1,561,400.00)	33,961.82	2.18%	(130,116.67)	0.00	0.00%
Total	151 General Debt Service	(208,284.00)	26,659.67	12.80%	(17,357.00)	(2,252.60)	-12.98%

Template Name: LGC Defined
Created by: LGC

Loudon County Finance
Summary Financial Statement by Fund
August 2024

User: Erin Rice
Date/Time: 8/28/2024 11:46 AM
Page 20 of 23

156 Education Debt Service		Year-To-Date			Month-To-Date		
Account	Description	Budget Estimate	Actual	% of Budget	Estimate Avg/Mth	Actual	% of Avg
Revenues							
40110	Current Property Tax	2,851,976.00	4,217.67	-0.15%	237,664.67	0.00	0.00%
40120	Trustee's Collections - Prior Year	60,000.00	(3,041.49)	5.07%	5,000.00	0.00	0.00%
40125	Bankruptcy	3,000.00	(1.05)	0.04%	250.00	0.00	0.00%
40130	Cir Clk/Clk & Master Collections-Pr Yr	46,000.00	(5,288.36)	11.50%	3,833.33	(5,288.36)	137.96%
40140	Interest And Penalty	18,000.00	(234.68)	1.30%	1,500.00	0.00	0.00%
40163	Payments In Lieu Of Taxes - Other	162,060.00	0.00	0.00%	13,505.00	0.00	0.00%
40285	Adequate Facilities/Development Tax	1,450,000.00	0.00	0.00%	120,833.33	0.00	0.00%
44110	Investment Income	60,000.00	(23,300.25)	38.83%	5,000.00	0.00	0.00%
Total Revenues		4,651,036.00	(27,648.16)	0.59%	387,586.33	(5,288.36)	1.36%
Expenditures							
82130	Education	(3,788,000.00)	0.00	0.00%	(315,666.67)	0.00	0.00%
82230	Education	(994,442.00)	12,658.57	1.27%	(82,870.17)	12,658.57	15.28%
82330	Education	(125,000.00)	73.95	0.06%	(10,416.67)	0.00	0.00%
Total Expenditures		(4,907,442.00)	12,732.52	0.26%	(408,953.50)	12,658.57	3.10%
Total	156 Education Debt Service	(256,406.00)	(14,915.64)	-5.82%	(21,367.17)	7,370.21	34.49%

Template Name: LGC Defined
Created by: LGC

Loudon County Finance
Summary Financial Statement by Fund
August 2024

User: Erin Rice
Date/Time: 8/28/2024 11:46 AM
Page 21 of 23

171 General Capital Projects		Year-To-Date			Month-To-Date		
Account	Description	Budget Estimate	Actual	% of Budget	Estimate Avg/Mth	Actual	% of Avg
Revenues							
40130	Cir Clk/Clk & Master Collections-Pr Yr	0.00	(223.57)	0.00%	0.00	(223.57)	0.00%
44110	Investment Income	0.00	(1,119.74)	0.00%	0.00	0.00	0.00%
44540	Sale Of Property	0.00	(240,000.00)	0.00%	0.00	(240,000.00)	0.00%
44570	Contributions & Gifts	0.00	(388.50)	0.00%	0.00	(14.50)	0.00%
47590	Other Federal Through State	34,142.00	0.00	0.00%	2,845.17	0.00	0.00%
49700	Insurance Recovery	0.00	(115,945.10)	0.00%	0.00	0.00	0.00%
Total Revenues		34,142.00	(357,676.91)	1,047.62%	2,845.17	(240,238.07)	8,443.
Expenditures							
91110	General Administration Projects	(242,514.00)	72,668.09	29.96%	(20,209.50)	55,128.09	272.78%
91120	Administration Of Justice Projects	(6,986.00)	66,525.64	952.27%	(582.17)	20,950.25	3,598.67%
91140	Public Health And Welfare Projects	(39,517.00)	3,530.00	8.93%	(3,293.08)	0.00	0.00%
91160	Agriculture & Natural Resources	(500.00)	500.00	100.00%	(41.67)	500.00	1,200.00%
Total Expenditures		(289,517.00)	143,223.73	49.47%	(24,126.42)	76,578.34	317.40%
Total	171 General Capital Projects	(255,375.00)	(214,453.18)	-83.98%	(21,281.25)	(163,659.73)	-769.03%

FY 2023 – 2024

Fund Summary per Year End Report
(Unaudited)

County General Fund 101
General Purpose School Fund 141

Distributed August 19, 2024

Budget Committee

Commission Workshop

Unaudited FY 2024 Year End Report

County General Fund 101

Total Fund Balance per YE	16,761,587	Est. FB per FY 2024 Budget	11,100,798			
Less PY Encumbrances	75,348	Plus FY 2024 Realized Revenue	106%	1,751,309	Total FB per FY 2023 Audit	15,200,569
Less Restrictions & Commitments	<u>1,793,614</u>	Plus FY 2024 Unencumb. Expense	94%	<u>1,660,237</u>	Total FB per FY 2024 YE	<u>16,761,587</u>
Total Available for FY 2024 Expenses	14,892,625			14,512,344	Gain/(Loss)	1,561,018

FY 2024:
Revenue Budget=27,927,459
Rev Rec'd=29,678,768

Rice, Erin:

Current Property Tax +363,368

Local Option:

Sales Tax +365,097

Hotel/Motel Tax +162,159

Business Tax +226,160

Other Local Revenue:

Investment Income: \$121,533

Fees in Lieu of Salary:

County Clerk +178,856

General Sessions +71,091

Trustee +77,121

	%			%	
<u>Fund 101 FY 2024 Revenue:</u>	<u>Realized</u>	<u>Gain/(Loss)</u>	<u>Fund 101 FY 2024 Expenses:</u>	<u>Spent</u>	<u>Gain/(Loss)</u>
County Property Taxes	103%	374,868	General Government	93%	357,948
Local Option & Statutory (43% of Gain)	113%	755,249	Finance	91%	306,274
Licenses & Permits	104%	41,084	Adm. Of Justice	94%	171,194
Fines, Forfeitures & Penalties	103%	9,057	Public Safety (31% of Gain)	97%	508,337
Charges for Current Services	102%	3,127	Public Health & Welfare	85%	172,582
Other Local Revenues	114%	123,085	Social, Cultural & Recreational	95%	14,304
Fees In Lieu of Salary	116%	426,484	Ag & Natural Resources	81%	51,116
State of TN	102%	88,199	Other General Government	96%	42,991
Federal	75%	(83,865)	General Government	97%	35,492
Govts, Citizens Groups & Sources	91%	14,022			
		<u>1,751,309</u>			<u>1,660,237</u>

FY 2024:
Exp Budget=29,895,885
YTD Exp=28,160,300

Unaudited FY 2024 Year End Report

General Purpose School Fund 141

Total Fund Balance per YE	17,360,585	Est. FB per FY 2024 Budget	9,275,787		
Less PY Encumbrances	493,808	Less Audited FY 2023 Rest & Enc	(1,473,553)		
Restricted for Hybrid TCRS Stabilization	649,346	Less FY 2024 Realized Revenue	104% 2,470,197	Total FB per FY 2023 Audit	11,119,947
		Plus FY 2024 Unencumb. Expense	92% 4,275,959	Total FB per FY 2024 YE	17,360,585
Total Available for FY 2024 Expenses	16,217,431		14,548,390	Gain/(Loss)	6,240,638

Rice, Erin:

Local Option:

Sales Tax +2,347,428

Other Local Revenues:

Investment Income: +294,039

State of TN:

ISM Grant - \$1.3million expected to be realized in FY 25

Federal:

COVID Grant (for past expenses): +154,061

ISM Grant: +645,975

Fund 141 FY 2024 Revenue:

	Realized	Gain/(Loss)
County Property Taxes	102%	224,136
Local Option & Statutory	204%	2,416,710
Licenses & Permits	123%	270
Charges for Current Services	44%	(11,475)
Other Local Revenues	296%	298,959
State of TN	96%	(1,330,101)
Federal	347%	849,352
Govts, Citizens Groups & Sources	109%	22,346
		2,470,197

Fund 141 FY 2023 Expenses:	Spent	Gain/(Loss)
Instruction	95%	1,691,873
Support Services	90%	1,823,347
Non-Instructional Services	92%	91,661
Capital Outlay	10%	669,279
		4,275,959

Rice, Erin:

Instruction: \$1.08 million was rolled into fund balance from the ISM grant expenses that will move forward to FY 2025.

Support Services:

Nurses were budgeted in Fund 141 & Fund 142, but due to the delay in the Fund 142 budget approval from the State; Fund 141 expenses were not needed and unspent.

Template Name: LGC Defined
Created by: LGC

Loudon County Finance
Summary Financial Statement by Fund
August 2024

User: Erin Rice
Date/Time: 8/28/2024 11:46 AM
Page 22 of 23

176 Highway Capital Projects		Year-To-Date			Month-To-Date		
Account	Description	Budget Estimate	Actual	% of Budget	Estimate Avg/Mth	Actual	% of Avg
Revenues							
40110	Current Property Tax	132,835.00	190.12	-0.14%	11,069.58	0.00	0.00%
40120	Trustee's Collections - Prior Year	2,300.00	(225.21)	9.79%	191.67	0.00	0.00%
40125	Trustee's Collections - Bankruptcy	300.00	(0.04)	0.01%	25.00	0.00	0.00%
40130	Cir Clk/Clk & Master Collections-Pr Yr	1,500.00	(384.62)	25.64%	125.00	(384.62)	307.70%
40140	Interest And Penalty	1,000.00	(17.85)	1.79%	83.33	0.00	0.00%
40163	Payments In Lieu Of Taxes - Other	9,400.00	0.00	0.00%	783.33	0.00	0.00%
40320	Bank Excise Tax	200.00	0.00	0.00%	16.67	0.00	0.00%
	Total Revenues	147,535.00	(437.60)	0.30%	12,294.58	(384.62)	3.13%
Expenditures							
91200	Highway & Street Capital Projects	(146,919.00)	36,506.94	24.85%	(12,243.25)	36,500.00	298.12%
	Total Expenditures	(146,919.00)	36,506.94	24.85%	(12,243.25)	36,500.00	298.12%
Total	176 Highway Capital Projects	616.00	36,069.34	-5,855.41%	51.33	36,115.38	-

Template Name: LGC Defined
Created by: LGC

Loudon County Finance
Summary Financial Statement by Fund
August 2024

User: Erin Rice
Date/Time: 8/28/2024 11:46 AM
Page 23 of 23

177 Education Capital Projects		Year-To-Date			Month-To-Date		
Account	Description	Budget Estimate	Actual	% of Budget	Estimate Avg/Mth	Actual	% of Avg
Revenues							
40285	Adequate Facilities/Development Tax	708,536.00	(146,415.50)	20.66%	59,044.67	0.00	0.00%
44110	Investment Income	0.00	(4,104.39)	0.00%	0.00	0.00	0.00%
48130	Contributions	450,000.00	0.00	0.00%	37,500.00	0.00	0.00%
	Total Revenues	1,158,536.00	(150,519.89)	12.99%	96,544.67	0.00	0.00%
Expenditures							
91300	Education Capital Projects	(450,000.00)	0.00	0.00%	(37,500.00)	0.00	0.00%
	Total Expenditures	(450,000.00)	0.00	0.00%	(37,500.00)	0.00	0.00%
Total	177 Education Capital Projects	708,536.00	(150,519.89)	21.24%	59,044.67	0.00	0.00%

LOUDON COUNTY CLERK
RILEY WAMPLER COUNTY CLERK
101 MULBERRY ST STE 200
LOUDON TN 37774
Telephone 865-458-3314
Fax 865-458-9891

Notaries to be elected September 03, 2024

CINDY AUCHEY
BRENDA J BURNETTE
WENDY CARNEY
GRAZYNA GAMMONS
WAYNE GEOFFREY
GINA MUCCI GEREMIA
LENORA HENNEN
MEGHAN L HULL

ASHLEY JENKINS
KIMBERLY LOVELACE
JANIE SHAVER MCCULLAH
JACOB PARKER
STEPHANIE B SURRETT
TYRESE WASHINGTON
BRITTANY WATTENBARGER
TOMMIE WOODBY