

Loudon County Commission

Loudon, Tennessee

Monday, November 6, 2023

Courthouse Annex

6:00 pm

AGENDA

Regular Meeting

To provide public comment, prior to the start of the meeting please write your name on the sign up sheet located on the podium for the General Public Comments or Public Hearing

(5 minute time limit)

Public Hearing

A RESOLUTION AMENDING THE MUNICIPAL AND REGIONAL SUBDIVISION REGULATIONS OF LOUDON COUNTY, PHILADELPHIA, GREENBACK, AND THE PLANNING REGIONS OF LENOIR CITY AND LOUDON, APPENDIX II, Construction Methods, 3. Seasonal Limits.

RESOLUTION ADOPTED BY THE LOUDON COUNTY COMMISSION CLOSING THE END OF SILO DRIVE, LOCATED IN SILO ACRES. LOCATED IN THE 6TH LEGISLATIVE DISTRICT OF LOUDON COUNTY TENNESSEE.

- 1) Opening of Meeting, Pledge of Allegiance to the Flag of the United States, Invocation - Commissioner Whitfield
- 2) Roll Call
- 3) Adoption of November 6, 2023 County Commission Agenda
- 4) Reading and Acceptance of October 2, 2023 Loudon County Commission Minutes
- 5) General Public Comments

6) Loudon County Codes Enforcement - Jim Jenkins

- A) A RESOLUTION AMENDING THE MUNICIPAL AND REGIONAL SUBDIVISION REGULATIONS OF LOUDON COUNTY, PHILADELPHIA, GREENBACK, AND THE PLANNING REGIONS OF LENOIR CITY AND LOUDON, APPENDIX II, Construction Methods, 3. Seasonal Limits.
- B) RESOLUTION ADOPTED BY THE LOUDON COUNTY COMMISSION CLOSING THE END OF SILO DRIVE, LOCATED IN SILO ACRES. LOCATED IN THE 6TH LEGISLATIVE DISTRICT OF LOUDON COUNTY TENNESSEE.

7) Mayor - Buddy Bradshaw

- A) Boards & Committees
(Renew all the terms for those highlighted in yellow on attached Boards & Committees List)

8) Commissioner - Bill Satterfield

- A) Website for County

9) Commissioner - Gary Whitfield

- A) Discussion of Dry Valley Road (Sending letter/ resolution to Loudon City)

10) Commissioner - Van Shaver

- A) Consideration of zoning change of property located at 19666 Hwy 11 East
- B) Consideration of a resolution pertaining to the Loudon County Economic Development Agency

11) Director of Accounts and Budgets - Erin Rice

- A) Monthly reports:
 - 1) Summary Financial Reports for October 2023
 - 2) Debt Report from the State for \$ 3 million school debt issuance

12) Commissioner – Adam Waller

A) Bonds and Notaries

Lisa Bridges, Teena Carter, Donna Connatser, Cynthia M. Dunlap,
Sandra Gibson, Sandra A. Hagan, Denissa Jones, Jessica Webb Moore,
Sydnee D Moyers, Wesley Petty, Linda Gail Smith, Angela M. Stoermer,
Sonya Thomas-Brown, Cindee Rene Watson

RESOLUTION _____

DRAFT

**RESOLUTION ADOPTED BY THE LOUDON COUNTY COMMISSION
CLOSING THE END OF SILO DRIVE, LOCATED IN SILO ACRES. LOCATED
IN THE 6TH LEGISLATIVE DISTRICT OF LOUDON COUNTY TENNESSEE.**

WHEREAS, the chief legislative body of the county has the authority, under Tennessee Code Annotated, to accept the dedication of roads, close existing roads, adopt standards for the acceptance of new roads and reopen previously closed or abandoned roads; and

WHEREAS, the Loudon County Regional Planning Commission has received a request from property owner located at 332 Silo Drive, to close the end of Silo Drive, Tax Map 016C, Parcel 024.00; and

WHEREAS, applicant feels the described roadway has no present nor future public use, and desires that any county encumbrance caused by the presence of the right-of-way be removed; and

WHEREAS, identified affected property owners were notified and a public notice and description of the request appeared in the Loudon County News Herald on January 19th, 2022 consistent with the provisions of Loudon County's procedure for closing a public road; and

WHEREAS, the Loudon County Regional Planning Commission has reviewed this matter, including the recommendation of the County Road Superintendent, and based on its investigation has determined that the closure of said road will not adversely affect any property owners or the present or future function of the County's roadway system, and recommends the closure a portion of said road, described as follows:

The county's portion., located at Parcel 024.00, Tax Map 016C, situated in the 6th Legislative District, being more specifically shown on the attached illustration, incorporated herein.

WHEREAS, the County Commission feels the closure of the roadway is not detrimental to the community or to the present or future function of the County roadway system;

NOW, THEREFORE, BE IT RESOLVED by the Loudon County Commission, in regular session assembled on this 6th day of November, 2023 that the afore described section of the roadway is hereby closed, with any interest the County has in the roadway being hereby relinquished as provided by law.

BE IT FURTHER RESOLVED that this Resolution shall take effect immediately, the public welfare requiring it.

ATTEST

LOUDON COUNTY CHAIRMAN

DATE: _____

APPROVED: LOUDON COUNTY MAYOR

The votes on the question of approval of this Resolution by the Planning Commission are as follows:

APPROVED: _____

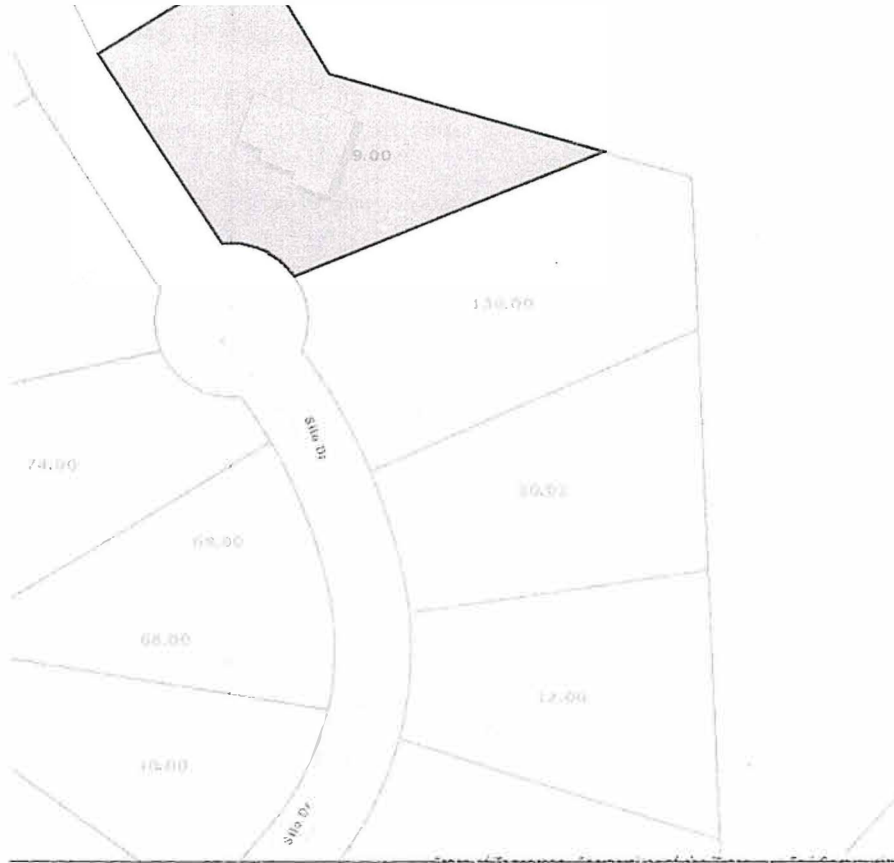
DISAPPROVED: _____

ATTEST: SECRETARY LOUDON COUNTY
REGIONAL PLANNING COMMISSION

Dated: _____

**LOUDON COUNTY COMMISSION
ILLUSTRATION ATTACHMENT**

**A RESOLUTION OF THE LOUDON COUNTY COMMISSION ACCEPTING ROAD CLOSURE AT
THE END OF SILO DRIVE, LOCATED IN SILO ACRES SUBDIVISION, LOCATED IN THE 6TH
LEGISLATIVE DISTRICT OF LOUDON COUNTY TENNESSEE**



RESOLUTION _____

DRAFT

A RESOLUTION AMENDING THE MUNICIPAL AND REGIONAL SUBDIVISION REGULATIONS OF LOUDON COUNTY, PHILADELPHIA, GREENBACK, AND THE PLANNING REGIONS OF LENOIR CITY AND LOUDON, APPENDIX II, Construction Methods, 3. Seasonal Limits.

WHEREAS, the Regional Planning Commissions, in accordance with Tennessee Code Annotated §13-3-401 through §13-3-411 and §13-4-301 through §13-4-309, may adopt and amend regulations governing the subdivision of land; and

WHEREAS, subdivisions must be conceived, designed, and developed in accordance with the sound rules and proper minimum standards as established in the Regional and Municipal Subdivision Regulations to protect the interests of the entire community; and

WHEREAS, subdivisions of land become a public responsibility in that public services customary to urban areas must be provided and the welfare of the entire community is thereby affected in many important respects; and

WHEREAS, the Regional Planning Commissions strive to cooperate with local authorities by conforming to consistent guidelines of community development; and

WHEREAS, a notice of public hearing and a description of the resolution appeared in the Loudon County newspaper, the News Herald on _____, consistent with the provisions of Tennessee Code Annotated, §13-7-105, and

NOW, THEREFORE, BE IT RESOLVED by the Regional Planning Commissions that the Subdivision Regulations be amended as follows:

That in Appendix II, Construction Methods: 3. Seasonal Limits, be amended by adding the following text after the first sentence:

(Exception) A Paving and Compaction Plan for Cold Weather Asphalt Paving may be submitted for review and approval to the Loudon County HWY Department for approval. The plan must comply with the current TDOT procedure for “Paving and Compaction Plan for Cold Weather” Asphalt Paving.

BE IT FINALLY RESOLVED, that this Resolution shall take effect immediately, the public welfare requiring it.

ATTEST

LOUDON COUNTY CHAIRMAN

DATE: _____

APPROVED: LOUDON COUNTY MAYOR

The votes on the question of approval of this Resolution by the Planning Commission on June are as follows:

APPROVED: _____ DISAPPROVED: _____

Guide to Changes to be presented at October 16, 2023 Commission Workshop



Renew for Current Term



Name Change and Renew for Current Term



Vacant Spot to be filled

Changes to be made:

Airport Authority -

Gregory Windle to replace John Manikas (deceased)

Capital Projects -

Joe Morrison replacing Will Jenkins

Surplus Property Authority -

Joe Morrison replacing Van Shaver

Additional Committees Not Listed

Ad Hoc Planning -

Van Shaver

Adam Waller

Public Records Committee -

Darryl Tuck

Nancy Gregg

Van Shaver

Adam Waller

Tammy Gallaher

Riley Wampler

Hank Sledge

2022-23 LOUDON COUNTY BOARDS & COMMITTEES

Working Copy for November 6, 2023 Commission Meeting

Board/Committee Name	Term	Comment	Expiration
Adult Oriented Business Board	4 YR		
Bill Satterfield		Commissioner	August 2026
Rosemary Quillen		Commissioner	August 2026
Bill Geames		Commissioner	August 2026
Chase Randolph (2-6-23)		Commissioner	August 2026
Adam Waller		Commissioner	August 2026
Agriculture Extension Committee	2 YR		
Van Shaver		Commissioner	September 2023
Joe Alexander			September 2023
Beth Snipes			September 2024
Bill Satterfield		Commissioner	September 2024
Gary Whitfield		Commissioner	September 2024
John Walton			September 2024
Sharon Long			September 2024

Airport Authority	5 YR		
Adam Waller			August 2025
David Ferguson			August 2026
Charles Wells			August 2027
John Manikas CHANGE TO Gregory Windle (10-16-23)			August 2028
Clayton Pangle			August 2024
Animal Control Authority Advisory Board	1 YR		
Dusty Langley		At-Large	September 2023
Henry J. Cullen		Commissioner	September 2023
Heather Shields (2-6-23)		At-Large	September 2023
Dr. Berry Gordon		Veterinarian Assoc.	September 2023
Meghan Hull		Humane Society	September 2023
Mike Brubaker		At-Large	September 2023

Audit Committee	4 YR Staggered		
Charlie Bettis			August 2024
Adam Waller		Commissioner	August 2024
Will Jenkins		Commissioner	August 2026
Van Shaver		Commissioner	August 2026
Beer Board	3 YR		
Ed Heilman		Panel C/7 th District	August 2024
Mary Ann Cook		Panel C/5 th District	August 2024
Krystee Ervin Conaway		Panel C/6 th District	August 2024
John Lovelace		Panel A/1 st District	August 2025
Connie Sledzinski		Panel A/2 nd District	August 2025
Jim Brooks		Panel B/3 rd District	August 2023
David Gray		Panel B/4 th District	August 2023
Blair Bend Industrial Committee	1 YR		
Chase Randolph		Commissioner	August 2023
Henry Cullen		Commissioner	August 2023
Gary Whitfield		Commissioner	August 2023

Board of Zoning Appeals	4 YR		
Mike Waller (11-7-22)		1 st District	June 2026
Leon Shields		2 nd District Slot A	June 2023
Ryan Bright		4 th District	June 2026
Jim Brooks		3 rd District Slot B	June 2026
John Napier		1 st District	June 2026
Budget Committee	1 YR		
Henry Cullen		Commissioner	August 2023
Bill Satterfield		Commissioner	August 2023
Gary Whitfield		Commissioner	August 2023
Van Shaver		Commissioner	August 2023
Appointee Buddy Bradshaw		County Mayor	-----
Appointee Erin Rice		Budget Director	-----
Capital Projects Committee	1 YR		
Will Jenkins (CHANGE TO Joe Morrison 09/18/23)		Commissioner	August 2023
Bill Geames (2-6-23)		Commissioner	August 2023
Chase Randolph		Commissioner	August 2023
Adam Waller		Commissioner	August 2023
Rosemary Quillen		Commissioner	August 2023
Matt Kleinschmidt (2-6-23)		Purchasing Director	

Chamber of Commerce Board of Directors	1 YR		
Rosemary Quillen		Commissioner	December 2023
Construction Board of Adjustment & Appeals	5 YR		
			January 2024
Bob Maroney			January 2024
		Alternate	January 2027
Eric Good			January 2027
Bill Hart			January 2026
Mike Waller		Alternate	January 2026
Mike White			January 2025

County Corrections Partnership		MAYOR TO UPDATE	
Buddy Bradshaw		County Mayor	August 2017
Tim Guider		County Sheriff	August 2017
Henry Cullen		Commissioner	August 2017
Leo Bradshaw		Commissioner	August 2017
Bill Satterfield		Commissioner	August 2017
Chris Miller		Citizen	August 2017
*Has to discussed & reinstated before updating Board			

E-911 Board	4 YR		
Jimmy Davis		Panel A-County Sheriff	February 2026
Van Shaver		Panel A-Commissioner	February 2026
James Webb		Panel A-Loudon City Police Chief	February 2026
Kelli Branam		Panel B-Loudon Co. EMA	February 2027
Richard Martin		Panel B-Lenoir City Fire Chief	February 2027
Don White		Panel B-Lenoir City Police Chief	February 2027
Mike Brubaker		Panel C-Loudon City Safety Director	February 2024
Bill Hart		Panel C-Rescue Squad Chief	February 2024
Ronnie Lett		Panel C-Greenback Fire Chief	February 2024
Ethics Committee	1 YR		
Billy Pickel-Constitutional Officer		Hwy Superintendent	September 2023
Steve Cook		At-large	September 2023
Bill Geames		Commissioner	September 2023
Bill Satterfield		Commissioner	September 2023
Will Jenkins		Commissioner	September 2023

Economic Development Agency B of D	1 YR		
Gary Whitfield (2-6-23)		Commissioner	August 2023
Equalization Board	2 YR Even YR		
Ruth Henderson-McQueen			April 2024
Delmar Davis			April 2024
Patricia Sheppard			April 2024
			April 2024
Cynthia Fleming		Lenoir City Representative	April 2024
Financial Advisory Committee	1 YR		
Will Jenkins		Commissioner	August 2023
Van Shaver		Commissioner	August 2023
Chase Randolph (2-6-23)		Commissioner	August 2023
Buddy Bradshaw-Chair		County Mayor	August 2023
Erin Rice (5-1-2023)		Budget Director	August 2023
Chip Miller		Trustee	August 2023

Board/Committee Name	Term	Comment	Expiration
GIS Board	3 YR		
Mike Campbell		Property Assessor	October 2024
Jack Qualls		Mayor's Designee	October 2024
Patty Terry		LCUB	October 2024
Ryne Clinard		LCUB	October 2024
Barry McNabb		LUB	October 2024
Jack Qualls		LUB	October 2024
Ryan Janikula		Commission Appointed	October 2024
Governmental Affairs Committee	1 YR		
Bill Satterfield		Commissioner	August 2023
Henry Cullen		Commissioner	August 2023
Will Jenkins		Commissioner	August 2023
Chase Randolph		Commissioner	August 2023
Rosemary Quillen (2-6-23)		Commissioner	August 2023
Industrial Bond/Development Board	6 YR		
Mel Hines		Panel B	September 2026
Ted Wampler, Jr.		Panel B	September 2026
Bill Butera		Panel B	September 2026
James Thomason		Panel C	September 2027

Jim Curtis		Panel C	September 2027
Nancy Beaty		Panel C	September 2027
Bruce Martin		Panel A	September 2028
		Panel A	September 2028
Mike Webb		Panel A	September 2028
Loudon County Library Board	3 YR	6-5-23 NEW TRUSTEES & BOARD OFFICIALS	
Kyle Styer		Loudon	April 2024
Pauline Barbour		Philadelphia	April 2025
Cindy Benefield		Greenback	April 2025
Sandi Jorgeson		Tellico Village	April 2023
Sarah Thomason		Loudon	April 2023
Elizabeth Hall		Tellico Village	April 2025
Beth Walderman		Lenoir City	April 2025
JoAnn Hart		Lenoir City	April 2025
Carolyn Page		At-Large	April 2023
Library Board-Ocoee River Regional	3 YR		
Pauline Barbour			April 2024
Elizabeth Hall			April 2024

Litter Control Committee	1 YR		
Adam Waller		Commissioner	August 2023
Will Jenkins		Commissioner	August 2023
Bill Geames		Commissioner	August 2023
Jimmy Davis		County Sheriff	August 2023
Billy Pickel		Hwy Superintendent	August 2023
Chris Parks		Convenience Center Director	

Board/Committee Name	Term	Comment	Expiration
Maintenance Committee	1 YR		
Greg Montooth		Maintenance Supervisor	August 2023
Van Shaver		Commissioner	August 2023
Gary Whitfield		Commissioner	August 2023
Scott Newman		Board of Education	August 2023
Bobby Johnson		Board of Education	August 2023
Planning Commission (RPC)	1 YR		
Pat Couk (Leon Shield 9/22)		Slot B/2 nd District	June 2023
Mike Waller		6 th District	June 2023
Pam McNew		Slot A/1 st District	June 2024
Keith Buckles		Slot A/5 th District	June 2024
Jimmy Williams		Slot B/5 th District	June 2023
Jim Brooks		3 rd District	June 2023

John Napier		Slot B/1 st District	June 2023
Andy Hamilton (Todd Kennedy 9/22)		Slot A/2 nd District	June 2023
Ryan Bright		4 th District	June 2023
Carlie McEachern		(LCRPC)	Co-Term
Leon Shields		(LCRPC)	Co-Term
Purchasing Committee	1 YR		
Rosemary Quillen		Commissioner	August 2023
Chase Randolph		Commissioner	August 2023
Bill Geames		Commissioner	August 2023
Adam Waller (2-6-2023)		Commissioner	August 2023
Buddy Bradshaw		County Mayor	August 2023
Matt Kleinschmidt (ex-officio) (2-6-23)		Purchasing Director	August 2023
Roane State Maintenance & Operations Advisory Committee	3 YR		
Bill Satterfield (2-6-2023)		Commissioner	June 2023
Greg Montooth		Loudon Maintenance Director	June 2023
Tony Aikens		Lenoir City Mayor	June 2023
Susan Williams		Roane State	June 2023
Safety Committee	1 YR		
Riley Wampler		County Clerk	August 2023
Buddy Bradshaw		County Mayor	August 2023
Chip Miller		Trustee	August 2023

Tammy Gallahar		Register of Deeds	August 2023
Steve Harrelson		Circuit Criminal Court Clerk	August 2023
Jimmy Davis		County Sheriff	August 2023
Henry Cullen		Commissioner	August 2023
Becky Wallace			August 2023
Rex Dale		General Sessions Judge	August 2023
Mike Campbell		Property Assessor	August 2023
Greg Montooth		Facilities Maintenance Director	August 2023
Tracy Blair		Budget Director	August 2023
Hank Sledge		General Sessions Judge, Div 2	August 2023

Board/Committee Name	Term	Comment	Expiration
Salary Benefit AD-HOC Committee	1 YR		
Mike Campbell		Property Assessor	August 2023
Lisa Niles Scott		Clerk & Master	August 2023
Henry Cullen		Commissioner	August 2023
Gary Whitfield		Commissioner	August 2023
Riley Wampler		County Clerk	August 2023
Whittney Caldwell		Employee Benefits	August 2023
Buddy Bradshaw		County Mayor	August 2023
Matt Kleinschmidt (2-6-23 & 5-1-23)		Purchasing Director	August 2023
Tammy Gallahar		Register of Deeds	August 2023

Steve Harrelson		General Sessions Court Clerk	August 2023
Jimmy Davis		County Sheriff	August 2023
Chip Miller		Trustee	August 2023
Billy Pickel		Hwy Superintendant	August 2023
Greg Montooth		Facilities Maintenance Director	August 2023
Erin Rice (5-1-23)		Finance Director	August 2023
Rex Dale		Judge	August 2023
Hank Sledge		Judge	August 2023
Senior Citizens Executive Committee	1 YR		
Joe Morrision (2-6-23)		Commissioner	August 2023
Bill Satterfield		Commissioner	August 2023
Becky Wallace		Senior Citizens Center Director	August 2023
Sheriff's Merit Services Board			
Bill Geames		Commissioner	August 2025
Gary Whitfield		Commissioner	August 2025
Steve Cook			August 2025
Solid Waste Disposal Committee	6 YR		
Larry Rolon (4-3-22)		Panel B	April 2027
Pat Hunter (removed 9-5-23) VACANT		Panel B	April 2027
Adam Waller (9-6-22) temporary		Panel C	March 2025

Gary Busch (6-5-23)		Panel C	March 2025
Dave Hall (Appointed by Loudon)		Panel A-Loudon	March 2023
Bill Satterfield (temp appointment 9-6-22) resigned 6-5-23		Panel A-Commissioner	March 2023
Monty Ross (appointed by Lenoir City)		Panel A-Lenoir City	March 2023
Surplus Property Authority	1 YR		
Van Shaver (CHANGE TO JOE MORRISON) 9-18-23		Commissioner	August 2023
Will Jenkins		Commissioner	August 2023
Adam Waller		Commissioner	August 2023
Chase Randolph		Commissioner	August 2023
Buddy Bradshaw		County Mayor	August 2023
Matt Kleinschmidt (2-9-23)		Purchasing Director	August 2023
TCCA Legislative Committee	1 YR		
Rosemary Quillen		Commissioner	June 2023

Board/Committee Name	Term	Comment	Expiration
----------------------	------	---------	------------

TRDA Board of Directors (Loudon)	6 YR		
Henry Cullen			August 2024
Buddy Bradshaw			August 2026
Jimmy Matlock			August 2026

TASS Board of Directors (Loudon)	3 YR		
Bill Satterfield			June 2023
James Brooks			June 2024
Chip Miller			June 2025
Visitor's Bureau Board	1 YR		
Rosemary Quillen		Commissioner	December 2023

Revised 10/12/23 by TW

LOUDON COUNTY COMMISSION
LOUDON COUNTY, TENNESSEE
Monday, October 2, 2023
Courthouse Annex Building
6:00 P.M.

REGULAR COMMISSION MINUTES

- (1) Opening of Meeting BE IT REMEMBERED, that the Board of Commission of Loudon County convened in regular session in Loudon, Tennessee on the 6th day of October 2023.
- Commission Chairman Cullen called the meeting to order at 6:00 pm
- Commissioner Satterfield opened the County Commission Meeting by leading the Pledge of Allegiance to the Flag of the United States of America, and then gave the invocation.
- (2) Roll Call Upon Roll Call, the following commissioners were present: Chase Randolph, Bill Geames, William Jenkins, Rosemary Quillen, Bill Satterfield, Henry Cullen, Joe Morrison, Van Shaver, Adam Waller (9)
- Also present, were the Mayor - Buddy Bradshaw, Director of Accounts and Budgets - Erin Rice and Chief Deputy - Tammie Wampler.
- Commissioner Gary Whitfield was absent from the meeting.
- (3) Agenda Adoption Commission Chairman Cullen requested that the October 2, 2023 agenda be adopted. Commissioner Morrison made a motion to remove items 9E # 1 & 2 ARPA Funds 5th District Commissioner Morrison & Commissioner Shaver \$ 25,000 for Iva's Place for further discussion.
- Commissioner Shaver made a motion to approve the agenda as amended.
- Commissioner Randolph seconded the motion.
- Upon Voice Vote, the motion PASSED unanimously.
- (4) Minutes Approved Commission Chairman Cullen requested that the September 5, 2023 Loudon County Commission Meeting Minutes be accepted.
- Commissioner Shaver made the motion to accept the minutes as written.
- Commissioner Satterfield seconded the motion.
- Upon Voice Vote, the motion PASSED.
- (5) General Public Comments Commission Chairman Cullen called to the floor those who signed up for General Public Comments. The following people spoke:
- 1) Monty Ross - Minutes
 - 2) Michelle Fritz - Agenda Items
 - 3) Susan Gingrich- Agenda Items
 - 4) Pat Hunter - LCSWC Removal
- (6) Zoning - Hwy 321 / 3rd Legislative District Loudon County Codes Enforcement - Jim Jenkins presented to commission the following Zoning Items:
- 1) A Resolution Amending the Zoning Map of Loudon County, Tennessee, Pursuant to Chapter Seven, §13-7-105, of the Tennessee Code Annotated, to Re-Zone from O-1/R-1 Office Professional District /Suburban - Residential District to C-2 General Commercial District, Loudon County Tax Map 035, Parcel 052.00 & 053.00, Located Hwy 321, Loudon County, TN, Situated in the 3rd Legislative District.
- Commissioner Satterfield made a motion to approve the zoning resolution.

Commissioner Shaver seconded the motion.

Commission Chairman Cullen called for a Roll Call Vote.

Upon Roll Call Vote, the following commissioners voted AYE:

Geames, Jenkins, Quillen, Satterfield, Cullen, Morrison, Shaver, Waller, Randolph (9)

The motion PASSED. (9/0) RESOLUTION 100223-A

(7) Zoning -
2001 Waller
Ferry Road /
5th
Legislative
District

- 2) A Resolution Amending the Zoning Map of Loudon County, Tennessee, Pursuant to Chapter Seven, §13-7-105, of the Tennessee Code Annotated, to Re-Zone from R-1, Suburban residential district to C-2, General Commercial District. Loudon County Tax Map 009, Parcel 103.02 Located at 2001 Waller Ferry Road, Loudon County, Tennessee Situated in the 5th Legislative District.

Commissioner Shaver made a motion to approve the zoning resolution.

Commissioner Satterfield seconded the motion.

Commission Chairman Cullen called for a Roll Call Vote.

Upon Roll Call Vote, the following commissioners voted AYE:

Jenkins, Quillen, Satterfield, Cullen, Morrison, Shaver, Waller, Randolph, Geames (9)

The motion PASSED. (9/0) RESOLUTION 100223-B

(8) Zoning
Resolution -
4860
Simpson Road
/ 4th
Legislative
District -
DENIED

- 3) A Resolution Amending the Zoning Map of Loudon County, Tennessee, Pursuant to Chapter Seven, §13-7-105, of the Tennessee Code Annotated, to Re-Zone from A-2, Rural Residential District to R-1, Suburban - Residential District. Loudon County Tax Map 058, Parcel 006.00, Located 4860 Simpson Road Loudon County, TN, Situated in the 4th Legislative District.

Commissioner Randolph made a motion to DENY the zoning resolution.

Commissioner Geames seconded the motion.

Commission Chairman Cullen called for a Roll Call Vote.

Upon Roll Call Vote, the following commissioners voted AYE:

Quillen, Satterfield, Cullen, Morrison, Shaver, Waller, Randolph, Geames, Jenkins (9)

The motion PASSED. (9/0) RESOLUTION 100223-C

(9) Zoning
Resolution -
19666 Hwy
11 / 5th
Legislative
District -
TABLED 30
Days

- 4) A Resolution Amending the Zoning Map of Loudon County, Tennessee, Pursuant to Chapter Seven, §13-7-105, of the Tennessee Code Annotated, to Re-Zone Removal Agriculture Stipulation C-2, General Commercial District. Loudon County Tax Map 007, Parcel 062.00 Located at 19666 Hwy 11, Loudon County, TN, Situated in the 5th District.

Commissioner Shaver made a motion to TABLE the zoning resolution for 30 days.

Commissioner Morrison seconded the motion.

Commission Chairman Cullen called for a Roll Call Vote.

Upon Roll Call Vote, the following commissioners voted AYE:

Satterfield, Cullen, Morrison, Shaver, Waller, Randolph, Geames, Jenkins, Quillen (9)

The motion PASSED. (9/0) RESOLUTION 100223-D

(10) Boards &
Committees -
TABLED

Mayor Bradshaw requested that the Boards and Committees be tabled until the next workshop.

Commissioner Shaver presented to commission the consideration of a resolution to oppose any federal medical mandates.

(11) Resolution
Opposing
Federal
Mandates for
Covid

Commissioner Shaver made a motion to oppose any federal mandates for Covid.

Commissioner Morrison seconded the motion.

Commission Chairman Cullen called for a Roll Call Vote.

Upon Roll Call Vote, the following commissioners voted AYE:

Cullen, Morrison, Shaver, Waller, Randolph, Geames, Jenkins, Quillen, Satterfield (9)

The motion PASSED. (9/0) RESOLUTION 100223-E

(12) TLETA
Enforcement
Grant /
Personnel
Status
Change -
County Clerk's
Office / Fire
Safety
Commitment /
Sr. Health
(Humana)
Insurance
Contract

Director of Accounts and Budgets, Erin Rice presented to commission consideration of recommendation to approve a commitment of funds from the TLETA (TN Law Enforcement Grant) Grant to be used by the Sheriff's Office for training and/or equipment. (Resolution attached for this commitment.) RESOLUTION 100223-F

Director of Accounts and Budgets, Erin Rice presented to commission consideration of recommendation to approve request for personnel change of status in the County Clerk's Office.

Director of Accounts and Budgets, Erin Rice presented to commission consideration of recommendation to approve a request to appropriate funds from the Fire Safety Commitment in the amount of \$19,000 for fire blankets.

Director of Accounts and Budgets, Erin Rice presented to commission consideration of recommendation to approve request for new rates for Sr. Health (Humana) Insurance Contract.

Commissioner Shaver made a motion to approve the above four recommendations.

Commissioner Randolph seconded the motion.

Commission Chairman Cullen called for a Roll Call Vote.

Upon Roll Call Vote, the following commissioners voted AYE:

Cullen, Morrison, Shaver, Waller, Randolph, Geames, Jenkins, Quillen, Satterfield (9)

The motion PASSED. (9/0)

(13) ARPA Funds -
5th District /
\$ 36,500
Beauty for
Ashes

Director of Accounts and Budgets, Erin Rice presented to commission consideration of recommendation to approve ARPA fund resolutions as follows:

- 1) 5th District, Seat A - Mr. Morrison - \$36,500 Beauty for Ashes (2nd reading)
- 2) 5th District, Seat B - Mr. Shaver - \$36,500 Beauty for Ashes (2nd reading)

Commissioner Shaver made a motion to approve the ARPA fund resolutions.

Commissioner Morrison seconded the motion.

Commission Chairman Cullen called for a Roll Call Vote.

Upon Roll Call Vote, the following commissioners voted AYE:

Morrison, Shaver, Waller, Randolph, Geames, Jenkins, Quillen, Satterfield, Cullen (9)

The motion PASSED. (9/0) RESOLUTION 100223-G

(14) Budget
Amendments
/ Line
Adjustments /
Amendments
- Funds: 101,
115, 116, 127,
131, 141,
142, 171

Director of Accounts and Budgets, Erin Rice presented to commission consideration of recommendation to approve line adjustments and/or amendments in the following funds:

- 1) County General Fund 101 EXHIBIT 100223-H
- 2) Public Libraries Fund 115 EXHIBIT 100223-I
- 3) Convenience Centers Fund 116 EXHIBIT 100223-J
- 4) Special Revenue (ARPA) Fund 127 EXHIBIT 100223-K
- 5) Highway Department Fund 131 EXHIBIT 100223-L
- 6) General Purpose School Fund 141 EXHIBIT 100223-M
- 7) School Federal Projects Fund 142 EXHIBIT 100223-N
- 8) General Capital Projects Fund 171 EXHIBIT 100223-O

Commissioner Waller made a motion to approve the line item adjustments / amendments.

Commissioner Shaver seconded the motion.

Commission Chairman Cullen called for a Roll Call Vote.

Upon Roll Call Vote, the following commissioners voted AYE:

Shaver, Waller, Randolph, Geames, Jenkins, Quillen, Satterfield, Cullen, Morrison (9)

The motion PASSED. (9/0)

(15) FY 2023
Year End
Report

Director of Accounts and Budgets, Erin Rice presented to commission the FY 2023 Year-End Report. EXHIBIT 100223-P

(16) Distribution
of Monthly
Reports

Director of Accounts and Budgets, Erin Rice presented to commission the following monthly reports:

- 1) Approved Budget Committee Minutes - August 21, 2023
EXHIBIT 100223-Q
- 2) Summary Financial Reports for September 2023
EXHIBIT 100223-R

(17) Bonds &
Notaries

Commissioner Waller made a motion to approve the following bonds and notaries.

Christina Leigh Akins, Christine Bahamondes, Candi Carroll, William Dalton Cox, Daniel Deaton, Cindy Jo Fowler Brown, April Freeman, Melissa Jean Jenkins, Holly Jones, Nora Kammerdiener, Eddie Litton, Maria A Medina Gonzalez, Sonya Morgan, Amanda Pearsall, Robyn R Shannon, Jared Winn

Commissioner Randolph seconded the motion.

Commission Chairman Cullen called for a Voice Vote.

Upon Voice Vote the motion PASSED unanimously. (9/0) EXHIBIT 100223-5

(18) Adjournment

There being no further business a motion being duly made by Commissioner Shaver and seconded by Commissioner Waller the October 2, 2023 County Commission was adjourned at 7:20 pm

Loudon County Commission Chairman

ATTEST:

Loudon County Clerk

Loudon County Mayor

Template Name: LGC Defined
Created by: LGC

Loudon County Finance
Summary Financial Statement by Fund
October 2023

User: Erin Rice
Date/Time: 11/1/2023 9:44 AM
Page 1 of 23

101 General		Year-To-Date			Month-To-Date		
Account	Description	Budget Estimate	Actual	% of Budget	Estimate Avg/Mth	Actual	% of Avg
Revenues							
40110	Current Property Tax	13,840,098.00	(45,825.30)	0.33 %	1,153,341.50	0.00	0.00 %
40120	Trustee's Collections - Prior Year	130,000.00	(29,779.12)	22.91 %	10,833.33	0.00	0.00 %
40125	Trustee Collection-Bankruptcy	3,000.00	(228.13)	7.60 %	250.00	0.00	0.00 %
40130	Cir Clk/Clk & Master Collections-Pr Yr	75,000.00	(27,291.09)	36.39 %	6,250.00	(6,952.10)	111.23 %
40140	Interest And Penalty	25,000.00	(4,141.35)	16.57 %	2,083.33	0.00	0.00 %
40163	Payments In Lieu Of Taxes - Other	385,101.00	0.00	0.00 %	32,091.75	0.00	0.00 %
40210	Local Option Sales Tax	1,400,000.00	(543,069.61)	38.79 %	116,666.67	(168,675.28)	144.58 %
40220	Hotel/Motel Tax	510,000.00	(220,968.23)	43.33 %	42,500.00	(70,789.71)	166.56 %
40250	Litigation Tax - General	100,000.00	(27,152.57)	27.15 %	8,333.33	(8,209.64)	98.52 %
40260	Litigation Tax - Special Purpose	290,000.00	(64,441.28)	22.22 %	24,166.67	(18,758.10)	77.62 %
40270	Business Tax	536,400.00	(78,062.24)	14.55 %	44,700.00	(18,988.83)	42.48 %
40275	Mixed Drink Tax	29,000.00	(9,897.10)	34.13 %	2,416.67	(3,427.11)	141.81 %
40320	Bank Excise Tax	73,844.00	0.00	0.00 %	6,153.67	0.00	0.00 %
40330	Wholesale Beer Tax	120,000.00	(40,572.24)	33.81 %	10,000.00	(13,114.69)	131.15 %
41120	Animal Registration	63,500.00	(18,829.00)	29.65 %	5,291.67	(5,481.00)	103.58 %
41140	Cable TV Franchise	332,000.00	(92,808.14)	27.95 %	27,666.67	(4,712.02)	17.03 %
41510	Beer Permits	2,900.00	0.00	0.00 %	241.67	0.00	0.00 %
41520	Building Permits	600,000.00	(277,952.00)	46.33 %	50,000.00	(71,880.00)	143.76 %
41590	Other Permits	30,000.00	(10,559.24)	35.20 %	2,500.00	(2,191.90)	87.68 %
42180	DUI Treatment Fines	1,900.00	(190.00)	10.00 %	158.33	0.00	0.00 %
42190	Data Entry Fee - Circuit Court	930.00	(144.00)	15.48 %	77.50	(44.00)	56.77 %
42191	Courtroom Security Fee	5,300.00	(1,717.95)	32.41 %	441.67	(720.73)	163.18 %
42210	Fines	10,000.00	(2,588.84)	25.89 %	833.33	(1,354.22)	162.51 %
42220	Officers Costs	13,600.00	(6,417.96)	47.19 %	1,133.33	(4,022.23)	354.90 %
42240	Drug Control Fines	2,200.00	(1,594.81)	72.49 %	183.33	(836.00)	456.00 %
42250	Jail Fees	1,560.00	(328.94)	21.09 %	130.00	(154.93)	119.18 %
42290	Data Entry Fee - Criminal Court	1,000.00	(607.42)	60.74 %	83.33	(457.42)	548.90 %
42292	Victims Assistance Assessments	5,450.00	(1,093.00)	20.06 %	454.17	(536.00)	118.02 %
42310	Fines	45,000.00	(14,514.28)	32.25 %	3,750.00	(3,678.59)	98.10 %
42320	Officers Costs	113,000.00	(16,646.54)	14.73 %	9,416.67	(5,489.39)	58.29 %
42330	Games And Fish Fines	500.00	(157.50)	31.50 %	41.67	(59.40)	142.56 %
42340	Drug Control Fines	7,500.00	(2,274.52)	30.33 %	625.00	(990.13)	158.42 %
42350	Jail Fees	5,200.00	(1,538.42)	29.59 %	433.33	(498.75)	115.10 %
42351	Interpreter Fee	0.00	(50.00)	0.00 %	0.00	0.00	0.00 %
42380	DUI Treatment Fines	15,000.00	(3,468.92)	23.13 %	1,250.00	(1,071.12)	85.69 %
42390	Data Entry Fee - General Sessions	18,000.00	(4,569.00)	25.38 %	1,500.00	(1,333.50)	88.90 %
42391	Courtroom Security Fee	100,000.00	(23,784.98)	23.78 %	8,333.33	(7,151.76)	85.82 %
42392	Victims Assistance Assessments	24,550.00	(5,567.03)	22.68 %	2,045.83	(1,868.00)	91.31 %

Template Name: LGC Defined
Created by: LGC

Loudon County Finance
Summary Financial Statement by Fund
October 2023

User: Erin Rice
Date/Time: 11/1/2023 9:44 AM
Page 2 of 23

101 General		Year-To-Date			Month-To-Date		
Account	Description	Budget Estimate	Actual	% of Budget	Estimate Avg/Mth	Actual	% of Avg
42440	Drug Control Fines	630.00	0.00	0.00 %	52.50	0.00	0.00 %
42490	Data Entry Fee - Juvenile Court	0.00	(148.00)	0.00 %	0.00	(48.00)	0.00 %
42520	Officers Costs	33,000.00	(1,155.19)	3.50 %	2,750.00	(526.77)	19.16 %
42530	Data Entry Fee - Chancery Court	13,900.00	(968.00)	6.96 %	1,158.33	(388.00)	33.50 %
42591	Courtroom Security Fee	2,580.00	(675.25)	26.17 %	215.00	(273.75)	127.33 %
42610	Fines	5,000.00	(1,462.00)	29.24 %	416.67	(421.00)	101.04 %
42990	Other Fines, Forfeitures, And Penalties	0.00	(285.62)	0.00 %	0.00	(16.62)	0.00 %
43190	Other General Service Charges	35,000.00	(6,326.18)	18.07 %	2,916.67	(6,326.18)	216.90 %
43366	Greenbelt Late Applicaion Fee	100.00	0.00	0.00 %	8.33	0.00	0.00 %
43370	Telephone Commissions	70,300.00	(8,363.20)	11.90 %	5,858.33	0.00	0.00 %
43383	Additional Fees - Titling and	0.00	(12,383.00)	0.00 %	0.00	(3,912.00)	0.00 %
43392	Data Processing Fee -Register	30,000.00	(6,292.00)	20.97 %	2,500.00	(1,766.00)	70.64 %
43394	Data Processing Fee - Sheriff	6,000.00	(1,210.49)	20.17 %	500.00	(461.80)	92.36 %
43395	Sexual Offender Registration Fee-	3,000.00	(1,150.00)	38.33 %	250.00	(100.00)	40.00 %
43396	Data Processing Fee - County Clerk	1,000.00	(261.00)	26.10 %	83.33	(75.00)	90.00 %
43399	Vehicle Insurance Coverage and	2,000.00	(1,105.00)	55.25 %	166.67	(395.00)	237.00 %
44110	Investment Income	100,000.00	(261,664.62)	261.66 %	8,333.33	(117,518.24)	1,410.22 %
44130	Sale Of Materials And Supplies	3,750.00	(6.00)	0.16 %	312.50	0.00	0.00 %
44131	Commissary Sales	29,000.00	(9,770.72)	33.69 %	2,416.67	(3,183.65)	131.74 %
44160	Retirees' Insurance Payments	63,258.00	(31,829.36)	50.32 %	5,271.50	(6,026.85)	114.33 %
44161	Cobra Insurance Payments	2,873.00	(3,582.75)	124.70 %	239.42	0.00	0.00 %
44170	Miscellaneous Refunds	11,916.00	(1,492.32)	12.52 %	993.00	(281.44)	28.34 %
44530	Sale Of Equipment	500.00	(28,350.00)	5,670.00 %	41.67	(50.00)	120.00 %
44560	Damages Recovered From Individuals	0.00	(55.00)	0.00 %	0.00	(55.00)	0.00 %
44570	Contributions & Gifts	53,100.00	(17,514.59)	32.98 %	4,425.00	(3,117.25)	70.45 %
45510	County Clerk	520,000.00	(161,306.60)	31.02 %	43,333.33	(51,150.55)	118.04 %
45520	Circuit Court Clerk	120,000.00	(45,074.22)	37.56 %	10,000.00	(31,648.48)	316.48 %
45540	General Sessions Court Clerk	340,000.00	(113,408.30)	33.36 %	28,333.33	(36,365.71)	128.35 %
45550	Clerk And Master	85,000.00	(27,554.36)	32.42 %	7,083.33	(10,939.14)	154.43 %
45580	Register	500,000.00	(116,592.74)	23.32 %	41,666.67	(32,028.01)	76.87 %
45590	Sheriff	18,000.00	(8,224.45)	45.69 %	1,500.00	(2,051.00)	136.73 %
45610	Trustee	880,000.00	(61,748.93)	7.02 %	73,333.33	0.00	0.00 %
46110	Juvenile Services Program	9,000.00	0.00	0.00 %	750.00	0.00	0.00 %
46140	Aging Programs	13,300.00	0.00	0.00 %	1,108.33	0.00	0.00 %
46190	Other General Government Grants	2,403.00	(35,981.00)	1,497.34 %	200.25	(35,981.00)	17,968.04 %
46210	Law Enforcement Training Programs	81,600.00	0.00	0.00 %	6,800.00	0.00	0.00 %
46290	Other Public Safety Grants	2,428,395.00	(675,000.00)	27.80 %	202,366.25	0.00	0.00 %
46310	Health Department Programs	516,400.00	(57,232.48)	11.08 %	43,033.33	(57,232.48)	133.00 %
46830	Beer Tax	20,000.00	(10,128.93)	50.64 %	1,666.67	(10,128.93)	607.74 %

Template Name: LGC Defined
Created by: LGC

Loudon County Finance
Summary Financial Statement by Fund
October 2023

User: Erin Rice
Date/Time: 11/1/2023 9:44 AM
Page 3 of 23

101 General		Year-To-Date			Month-To-Date		
Account	Description	Budget Estimate	Actual	% of Budget	Estimate Avg/Mth	Actual	% of Avg
46835	Vehicle Certificate Of Title Fees	9,000.00	(2,615.05)	29.06 %	750.00	(895.60)	119.41 %
46840	Alcoholic Beverage Tax	96,000.00	(28,089.67)	29.26 %	8,000.00	0.00	0.00 %
46852	State Revenue Sharing -	60,000.00	(15,716.25)	26.19 %	5,000.00	(6,155.65)	123.11 %
46855	State Shared Sports Gaming Privilege	35,000.00	(14,729.01)	42.08 %	2,916.67	0.00	0.00 %
46915	Contracted Prisoner Board	165,000.00	(72,980.00)	44.23 %	13,750.00	0.00	0.00 %
46960	Registrar's Salary Supplement	15,000.00	(3,791.00)	25.27 %	1,250.00	(3,791.00)	303.28 %
46970	State Shared Sales Tax - Cities	6,000.00	(7,954.05)	132.57 %	500.00	0.00	0.00 %
46990	Other State Revenues	54,870.00	(105.29)	0.19 %	4,572.50	0.00	0.00 %
47220	Civil Defense Reimbursement	67,427.00	(59,098.99)	87.65 %	5,618.92	(43,721.24)	778.11 %
47235	Homeland Security Grants	18,000.00	0.00	0.00 %	1,500.00	0.00	0.00 %
47301	COVID-19 Grant #1	0.00	(154,060.72)	0.00 %	0.00	(154,060.72)	0.00 %
47590	Other Federal Through State	118,774.00	0.00	0.00 %	9,897.83	0.00	0.00 %
47990	Other Direct Federal Revenue	174,003.00	0.00	0.00 %	14,500.25	0.00	0.00 %
48130	Contributions	26,782.00	(1,330.19)	4.97 %	2,231.83	0.00	0.00 %
48140	Contracted Services	47,084.00	0.00	0.00 %	3,923.67	0.00	0.00 %
48610	Donations	11,850.00	(3,006.00)	25.37 %	987.50	(2,013.00)	203.85 %
48991	OPIOID SETTLEMENT FUNDS - PAST	0.00	(30,204.23)	0.00 %	0.00	0.00	0.00 %
49700	Insurance Recovery	7,500.00	(33,347.34)	444.63 %	625.00	(3,712.41)	593.99 %
49800	Transfers In	172,212.00	(77,211.73)	44.84 %	14,351.00	0.00	0.00 %
Total Revenues		26,002,040.00	(3,791,372.57)	14.58 %	2,166,836.67	(1,050,264.02)	48.47 %
Expenditures							
51100	County Commission	(228,725.00)	76,885.73	33.61 %	(19,060.42)	15,941.71	83.64 %
51210	Board Of Equalization	(3,440.00)	0.00	0.00 %	(286.67)	0.00	0.00 %
51220	Beer Board	(3,000.00)	0.00	0.00 %	(250.00)	0.00	0.00 %
51240	Other Boards And Committees	(7,600.00)	0.00	0.00 %	(633.33)	0.00	0.00 %
51300	County Mayor/Executive	(235,315.00)	77,316.49	32.86 %	(19,609.58)	17,744.33	90.49 %
51310	Personnel Office	(133,796.00)	48,945.79	36.58 %	(11,149.67)	9,020.50	80.90 %
51400	County Attorney	(285,000.00)	94,941.23	33.31 %	(23,750.00)	27,750.07	116.84 %
51500	Election Commission	(497,567.00)	136,419.84	27.42 %	(41,463.92)	43,223.72	104.24 %
51600	Register Of Deeds	(416,551.00)	173,537.76	41.66 %	(34,712.58)	46,685.58	134.49 %
51720	Planning	(187,828.00)	49,381.92	26.29 %	(15,652.33)	11,371.63	72.65 %
51750	Codes Compliance	(443,560.00)	142,140.67	32.05 %	(36,963.33)	62,429.83	168.90 %
51760	Geographical Information Systems	(81,544.00)	26,856.87	32.94 %	(6,795.33)	5,584.35	82.18 %
51800	County Buildings	(1,480,661.00)	656,235.48	44.32 %	(123,388.42)	110,564.70	89.61 %
51810	Other Facilities	0.00	4,240.32	0.00 %	0.00	(6,329.82)	0.00 %
51900	Other General Administration	(336,578.00)	366,537.52	108.90 %	(28,048.17)	360.00	1.28 %
51910	Preservation Of Records	(1,000.00)	0.00	0.00 %	(83.33)	0.00	0.00 %
52100	Accounting And Budgeting	(820,736.00)	268,514.96	32.72 %	(68,394.67)	50,575.06	73.95 %

Template Name: LGC Defined
Created by: LGC

Loudon County Finance
Summary Financial Statement by Fund
October 2023

User: Erin Rice
Date/Time: 11/1/2023 9:44 AM
Page 4 of 23

101 General		Year-To-Date			Month-To-Date		
Account	Description	Budget Estimate	Actual	% of Budget	Estimate Avg/Mth	Actual	% of Avg
52200	Purchasing	(337,735.00)	102,616.61	30.38 %	(28,144.58)	26,064.03	92.61 %
52300	Property Assessor's Office	(658,759.00)	226,139.39	34.33 %	(54,896.58)	39,423.02	71.81 %
52400	County Trustee's Office	(441,865.00)	178,731.11	40.45 %	(36,822.08)	33,199.67	90.16 %
52500	County Clerk's Office	(871,224.00)	271,648.78	31.18 %	(72,602.00)	58,028.34	79.93 %
52600	Data Processing	(225,867.00)	86,891.13	38.47 %	(18,822.25)	17,113.32	90.92 %
53100	Circuit Court	(561,536.00)	184,268.94	32.82 %	(46,794.67)	36,579.36	78.17 %
53300	General Sessions Court	(827,620.00)	288,009.68	34.80 %	(68,968.33)	53,379.76	77.40 %
53310	General Sessions Judge	(572,249.00)	182,201.27	31.84 %	(47,687.42)	44,736.16	93.81 %
53400	Chancery Court	(459,969.00)	157,892.72	34.33 %	(38,330.75)	33,191.19	86.59 %
53500	Juvenile Court	(359,179.00)	120,543.22	33.56 %	(29,931.58)	25,664.44	85.74 %
53700	Judicial Commissioners	(82,572.00)	22,840.91	27.66 %	(6,881.00)	6,241.22	90.70 %
53900	Other Administration Of Justice	(19,300.00)	5,418.67	28.08 %	(1,608.33)	2,189.00	136.10 %
53920	Courtroom Security	(1,500.00)	51.10	3.41 %	(125.00)	0.00	0.00 %
53930	Victim Assistance Programs	(30,000.00)	6,660.03	22.20 %	(2,500.00)	2,404.00	96.16 %
54110	Sheriff's Department	(8,617,501.00)	4,002,542.45	46.45 %	(718,125.08)	501,812.24	69.88 %
54120	Special Patrols	(12,000.00)	35,000.00	291.67 %	(1,000.00)	0.00	0.00 %
54130	Traffic Control	(34,500.00)	6,288.37	18.23 %	(2,875.00)	256.72	8.93 %
54160	Administration Of The Sexual Offender	(12,250.00)	0.00	0.00 %	(1,020.83)	0.00	0.00 %
54210	Jail	(4,606,655.00)	1,447,286.41	31.42 %	(383,887.92)	274,058.35	71.39 %
54320	Rural Fire Protection	(460,500.00)	460,135.00	99.92 %	(38,375.00)	18,635.00	48.56 %
54410	Civil Defense	(224,250.00)	63,272.77	28.22 %	(18,687.50)	11,239.05	60.14 %
54490	Other Emergency Management	(23,705.00)	24,388.69	102.88 %	(1,975.42)	15,900.02	804.89 %
54610	County Coroner/Medical Examiner	(125,000.00)	88,600.00	70.88 %	(10,416.67)	(16,600.00)	-159.36 %
54900	Other Public Safety	(545,000.00)	545,000.00	100.00 %	(45,416.67)	0.00	0.00 %
55110	Local Health Center	(41,388.00)	11,267.15	27.22 %	(3,449.00)	1,872.86	54.30 %
55120	Rabies And Animal Control	(549,548.00)	194,827.01	35.45 %	(45,795.67)	28,204.65	61.59 %
55190	Other Local Health Services	(516,400.00)	141,456.39	27.39 %	(43,033.33)	35,810.94	83.22 %
56300	Senior Citizens Assistance	(288,954.00)	105,674.51	36.57 %	(24,079.50)	22,469.18	93.31 %
57100	Agricultural Extension Service	(209,590.00)	3,021.14	1.44 %	(17,465.83)	316.71	1.81 %
57500	Soil Conservation	(54,601.00)	12,416.74	22.74 %	(4,550.08)	2,623.09	57.65 %
57700	Flood Control	(2,000.00)	2,000.00	100.00 %	(166.67)	0.00	0.00 %
57800	Storm Water Management	(4,000.00)	0.00	0.00 %	(333.33)	0.00	0.00 %
58110	Tourism	(120,000.00)	120,000.00	100.00 %	(10,000.00)	0.00	0.00 %
58120	Industrial Development	(183,106.00)	183,105.04	100.00 %	(15,258.83)	0.00	0.00 %
58130	Housing And Urban Development	(6,750.00)	3,000.00	44.44 %	(562.50)	0.00	0.00 %
58300	Veteran's Services	(78,014.00)	21,810.12	27.96 %	(6,501.17)	5,114.77	78.67 %
58500	Contributions To Other Agencies	(76,200.00)	76,200.00	100.00 %	(6,350.00)	0.00	0.00 %
58600	Employee Benefits	(10,300.00)	167,621.30	1,627.39 %	(858.33)	769.26	89.62 %
58900	Miscellaneous	(555,000.00)	14,457.27	2.60 %	(46,250.00)	198.56	0.43 %

Template Name: LGC Defined
Created by: LGC

Loudon County Finance
Summary Financial Statement by Fund
October 2023

User: Erin Rice
Date/Time: 11/1/2023 9:44 AM
Page 5 of 23

101 General		Year-To-Date			Month-To-Date		
Account	Description	Budget Estimate	Actual	% of Budget	Estimate Avg/Mth	Actual	% of Avg
99100	Transfers Out	(35,000.00)	0.00	0.00 %	(2,916.67)	0.00	0.00 %
	Total Expenditures	(28,004,488.00)	11,685,238.50	41.73 %	(2,333,707.33)	1,675,816.57	71.81 %
Total	101 General	(2,002,448.00)	7,893,865.93	394.21 %	(166,870.67)	625,552.55	374.87 %

Template Name: LGC Defined
Created by: LGC

Loudon County Finance
Summary Financial Statement by Fund
October 2023

User: Erin Rice
Date/Time: 11/1/2023 9:44 AM
Page 6 of 23

112 Courthouse & Jail Maintenance		Year-To-Date			Month-To-Date		
Account	Description	Budget Estimate	Actual	% of Budget	Estimate Avg/Mth	Actual	% of Avg
Revenues							
40266	Litigation Tax-Jail, Wrkhse,	100,000.00	(26,662.68)	26.66 %	8,333.33	(8,282.17)	99.39 %
	Total Revenues	100,000.00	(26,662.68)	26.66 %	8,333.33	(8,282.17)	99.39 %
Expenditures							
58900	Miscellaneous	(2,000.00)	199.45	9.97 %	(166.67)	0.00	0.00 %
99100	Transfers Out	(150,000.00)	0.00	0.00 %	(12,500.00)	0.00	0.00 %
	Total Expenditures	(152,000.00)	199.45	0.13 %	(12,666.67)	0.00	0.00 %
Total	112 Courthouse & Jail Maintenance	(52,000.00)	(26,463.23)	-50.89 %	(4,333.33)	(8,282.17)	-191.13

Template Name: LGC Defined
Created by: LGC

Loudon County Finance
Summary Financial Statement by Fund
October 2023

User: Erin Rice
Date/Time: 11/1/2023 9:44 AM
Page 7 of 23

114 Law Library		Year-To-Date			Month-To-Date		
Account	Description	Budget Estimate	Actual	% of Budget	Estimate Avg/Mth	Actual	% of Avg
Revenues							
40260	Litigation Tax - Special Purpose	4,500.00	(1,102.20)	24.49 %	375.00	(338.49)	90.26 %
	Total Revenues	4,500.00	(1,102.20)	24.49 %	375.00	(338.49)	90.26 %
Expenditures							
56500	Libraries	(4,600.00)	348.34	7.57 %	(383.33)	89.99	23.48 %
58900	Miscellaneous	(150.00)	8.35	5.57 %	(12.50)	0.00	0.00 %
	Total Expenditures	(4,750.00)	356.69	7.51 %	(395.83)	89.99	22.73 %
Total	114 Law Library	(250.00)	(745.51)	-298.20 %	(20.83)	(248.50)	-1,192.80

Template Name: LGC Defined
Created by: LGC

Loudon County Finance
Summary Financial Statement by Fund
October 2023

User: Erin Rice
Date/Time: 11/1/2023 9:44 AM
Page 8 of 23

115 Public Library		Year-To-Date			Month-To-Date		
Account	Description	Budget Estimate	Actual	% of Budget	Estimate Avg/Mth	Actual	% of Avg
Revenues							
40110	Current Property Tax	310,662.00	(1,028.36)	0.33 %	25,888.50	0.00	0.00 %
40120	Trustee's Collections - Prior Year	3,500.00	(735.88)	21.03 %	291.67	0.00	0.00 %
40125	Trustee's Collections - Bankruptcy	200.00	(6.41)	3.21 %	16.67	0.00	0.00 %
40130	Cir Clk/Clk & Master Collections-Pr Yr	2,000.00	(799.83)	39.99 %	166.67	(203.75)	122.25 %
40140	Interest And Penalty	900.00	(101.98)	11.33 %	75.00	0.00	0.00 %
40163	Payments In Lieu Of Taxes - Other	10,300.00	0.00	0.00 %	858.33	0.00	0.00 %
40320	Bank Excise Tax	2,400.00	0.00	0.00 %	200.00	0.00	0.00 %
43350	Copy Fees	5,735.00	(2,206.50)	38.47 %	477.92	(724.30)	151.55 %
43360	Library Fees	2,335.00	(1,360.94)	58.28 %	194.58	(231.00)	118.72 %
44130	Sale Of Materials And Supplies	0.00	(62.35)	0.00 %	0.00	0.00	0.00 %
44160	Retirees' Insurance Payments	7,303.00	(2,559.96)	35.05 %	608.58	(351.48)	57.75 %
44570	Contributions & Gifts	1,305.00	(401.51)	30.77 %	108.75	(152.01)	139.78 %
48130	Contributions	24,265.00	0.00	0.00 %	2,022.08	0.00	0.00 %
48610	Donations	19,100.00	(23,400.00)	122.51 %	1,591.67	0.00	0.00 %
Total Revenues		390,005.00	(32,663.72)	8.38 %	32,500.42	(1,662.54)	5.12 %
Expenditures							
56500	Libraries	(444,360.00)	146,894.34	33.06 %	(37,030.00)	30,955.18	83.59 %
Total Expenditures		(444,360.00)	146,894.34	33.06 %	(37,030.00)	30,955.18	83.59 %
Total	115 Public Library	(54,355.00)	114,230.62	210.16 %	(4,529.58)	29,292.64	646.70 %

Template Name: LGC Defined
Created by: LGC

Loudon County Finance
Summary Financial Statement by Fund
October 2023

User: Erin Rice
Date/Time: 11/1/2023 9:44 AM
Page 9 of 23

116 Solid Waste/Sanitation		Year-To-Date			Month-To-Date		
Account	Description	Budget Estimate	Actual	% of Budget	Estimate Avg/Mth	Actual	% of Avg
Revenues							
40210	Local Option Sales Tax	600,000.00	(232,744.12)	38.79 %	50,000.00	(72,289.40)	144.58 %
44145	Sale Of Recycled Materials	100,000.00	(46,451.70)	46.45 %	8,333.33	(26,687.00)	320.24 %
44160	Retirees' Insurance Payments	435.00	(185.35)	42.61 %	36.25	(68.38)	188.63 %
44170	Miscellaneous Refunds	225.00	0.00	0.00 %	18.75	0.00	0.00 %
46430	Litter Program	49,200.00	0.00	0.00 %	4,100.00	0.00	0.00 %
46990	Other State Revenues	50,000.00	(18,483.99)	36.97 %	4,166.67	0.00	0.00 %
	Total Revenues	799,860.00	(297,865.16)	37.24 %	66,655.00	(99,044.78)	148.59 %
Expenditures							
55720	Sanitation Education/Information	(49,200.00)	14,167.95	28.80 %	(4,100.00)	1,060.98	25.88 %
55732	Convenience Centers	(1,287,700.00)	574,368.75	44.60 %	(107,308.33)	56,486.28	52.64 %
55739	Other Waste Collection	(50,000.00)	29,891.35	59.78 %	(4,166.67)	29,891.35	717.39 %
	Total Expenditures	(1,386,900.00)	618,428.05	44.59 %	(115,575.00)	87,438.61	75.66 %
Total	116 Solid Waste/Sanitation	(587,040.00)	320,562.89	54.61 %	(48,920.00)	(11,606.17)	-23.72 %

Template Name: LGC Defined
Created by: LGC

Loudon County Finance
Summary Financial Statement by Fund
October 2023

User: Erin Rice
Date/Time: 11/1/2023 9:44 AM
Page 10 of 23

119 Industrial/Economic Development		Year-To-Date			Month-To-Date		
Account	Description	Budget Estimate	Actual	% of Budget	Estimate Avg/Mth	Actual	% of Avg
Revenues							
44120	Lease/Rentals	21,295.00	3,975.08	-18.67 %	1,774.58	(883.32)	49.78 %
44540	Sale Of Property	0.00	(2,185,767.00)	0.00 %	0.00	(2,185,767.00)	0.00 %
	Total Revenues	21,295.00	(2,181,791.92)	10,245.56	1,774.58	(2,186,650.32)	123,220.
Expenditures							
58120	Industrial Development	(22,300.00)	32.84	0.15 %	(1,858.33)	0.00	0.00 %
	Total Expenditures	(22,300.00)	32.84	0.15 %	(1,858.33)	0.00	0.00 %
Total 119	Industrial/Economic Development	(1,005.00)	(2,181,759.08)	-217,090.46	(83.75)	(2,186,650.32)	-

Template Name: LGC Defined
Created by: LGC

Loudon County Finance
Summary Financial Statement by Fund
October 2023

User: Erin Rice
Date/Time: 11/1/2023 9:44 AM
Page 11 of 23

122 Drug Control		Year-To-Date			Month-To-Date		
Account	Description	Budget Estimate	Actual	% of Budget	Estimate Avg/Mth	Actual	% of Avg
Revenues							
42240	Drug Control Fines	10,000.00	(5,907.33)	59.07 %	833.33	(3,708.80)	445.06 %
42310	Fines	0.00	(142.50)	0.00 %	0.00	(142.50)	0.00 %
42320	Officers Costs	0.00	(38.00)	0.00 %	0.00	(38.00)	0.00 %
42340	Drug Control Fines	6,000.00	(2,274.55)	37.91 %	500.00	(990.14)	198.03 %
42910	Proceeds From Confiscated Property	20,000.00	0.00	0.00 %	1,666.67	0.00	0.00 %
43370	Telephone Commissions	32,500.00	(16,487.93)	50.73 %	2,708.33	(8,489.18)	313.45 %
44530	Sale Of Equipment	20,000.00	0.00	0.00 %	1,666.67	0.00	0.00 %
44570	Contributions & Gifts	10,000.00	(4,061.50)	40.62 %	833.33	(2,198.00)	263.76 %
	Total Revenues	98,500.00	(28,911.81)	29.35 %	8,208.33	(15,566.62)	189.64 %
Expenditures							
54150	Drug Enforcement	(103,000.00)	18,885.37	18.34 %	(8,583.33)	69.30	0.81 %
	Total Expenditures	(103,000.00)	18,885.37	18.34 %	(8,583.33)	69.30	0.81 %
Total	122 Drug Control	(4,500.00)	(10,026.44)	-222.81 %	(375.00)	(15,497.32)	-4,132.62

Template Name: LGC Defined
Created by: LGC

Loudon County Finance
Summary Financial Statement by Fund
October 2023

User: Erin Rice
Date/Time: 11/1/2023 9:44 AM
Page 12 of 23

127 Other General Government Special Revenue		Year-To-Date			Month-To-Date		
Account	Description	Budget Estimate	Actual	% of Budget	Estimate Avg/Mth	Actual	% of Avg
Revenues							
44110	Investment Income	16,897.00	(16,170.51)	95.70 %	1,408.08	0.00	0.00 %
	Total Revenues	16,897.00	(16,170.51)	95.70 %	1,408.08	0.00	0.00 %
Expenditures							
91401	ARPA Grant #1-PUBLIC SAFETY	(3,068.00)	231.00	7.53 %	(255.67)	0.00	0.00 %
91402	ARPA Grant #2 - HIGHWAY	(699,962.00)	646,398.06	92.35 %	(58,330.17)	0.00	0.00 %
91403	American Rescue Plan Act Grant #3	(277,799.00)	56,563.50	20.36 %	(23,149.92)	2,238.38	9.67 %
91405	American Rescue Plan Act Grant #5	(1,617,185.00)	0.00	0.00 %	(134,765.42)	0.00	0.00 %
99100	Transfers Out	(117,212.00)	77,211.73	65.87 %	(9,767.67)	0.00	0.00 %
	Total Expenditures	(2,715,226.00)	780,404.29	28.74 %	(226,268.83)	2,238.38	0.99 %
Total 127	Other General Government Special	(2,698,329.00)	764,233.78	28.32 %	(224,860.75)	2,238.38	1.00 %

Template Name: LGC Defined
Created by: LGC

Loudon County Finance
Summary Financial Statement by Fund
October 2023

User: Erin Rice
Date/Time: 11/1/2023 9:44 AM
Page 13 of 23

128 Other Special Revenue Fund		Year-To-Date			Month-To-Date		
Account	Description	Budget Estimate	Actual	% of Budget	Estimate Avg/Mth	Actual	% of Avg
Revenues							
47700	Asset Forfeiture Funds	1,000.00	0.00	0.00 %	83.33	0.00	0.00 %
	Total Revenues	1,000.00	0.00	0.00 %	83.33	0.00	0.00 %
Expenditures							
54150	Drug Enforcement	(1,000.00)	0.00	0.00 %	(83.33)	0.00	0.00 %
	Total Expenditures	(1,000.00)	0.00	0.00 %	(83.33)	0.00	0.00 %
Total	128 Other Special Revenue Fund	0.00	0.00	100.00 %	0.00	0.00	0.00 %

Template Name: LGC Defined
Created by: LGC

Loudon County Finance
Summary Financial Statement by Fund
October 2023

User: Erin Rice
Date/Time: 11/1/2023 9:44 AM
Page 14 of 23

131 Highway/Public Works		Year-To-Date			Month-To-Date		
Account	Description	Budget Estimate	Actual	% of Budget	Estimate Avg/Mth	Actual	% of Avg
Revenues							
40110	Current Property Tax	587,608.00	(1,943.84)	0.33 %	48,967.33	0.00	0.00 %
40120	Trustee's Collections - Prior Year	9,000.00	(1,687.94)	18.75 %	750.00	0.00	0.00 %
40125	Bankruptcy	45.00	(13.87)	30.82 %	3.75	0.00	0.00 %
40130	Cir Clk/Clk & Master Collections-Pr Yr	4,000.00	(1,421.43)	35.54 %	333.33	(362.09)	108.63 %
40140	Interest And Penalty	2,000.00	(239.96)	12.00 %	166.67	0.00	0.00 %
40163	Payments In Lieu Of Taxes - Other	18,197.00	0.00	0.00 %	1,516.42	0.00	0.00 %
40280	Mineral Severance Tax	90,000.00	(22,179.05)	24.64 %	7,500.00	(22,179.05)	295.72 %
40320	Bank Excise Tax	4,000.00	0.00	0.00 %	333.33	0.00	0.00 %
44130	Sale Of Materials And Supplies	5,000.00	(3,733.00)	74.66 %	416.67	(640.00)	153.60 %
44145	Sale Of Recycled Materials	200.00	(399.00)	199.50 %	16.67	(399.00)	2,394.00 %
44160	Retirees' Insurance Payments	26,700.00	(2,248.98)	8.42 %	2,225.00	(385.47)	17.32 %
44170	Miscellaneous Refunds	2,000.00	0.00	0.00 %	166.67	0.00	0.00 %
46410	Bridge Program	704,132.00	0.00	0.00 %	58,677.67	0.00	0.00 %
46420	State Aid Program	1,665,300.00	(126,471.54)	7.59 %	138,775.00	0.00	0.00 %
46920	Gasoline And Motor Fuel Tax	2,381,044.00	(628,973.70)	26.42 %	198,420.33	(220,321.03)	111.04 %
46930	Petroleum Special Tax	31,000.00	(9,091.65)	29.33 %	2,583.33	(3,030.54)	117.31 %
49800	Transfers In	35,000.00	0.00	0.00 %	2,916.67	0.00	0.00 %
Total Revenues		5,565,226.00	(798,403.96)	14.35 %	463,768.83	(247,317.18)	53.33 %
Expenditures							
61000	Administration	(1,094,202.00)	343,721.89	31.41 %	(91,183.50)	81,986.08	89.91 %
62000	Highway And Bridge Maintenance	(1,082,962.00)	1,046,928.86	96.67 %	(90,246.83)	35,728.86	39.59 %
63100	Operation And Maintenance Of	(347,000.00)	278,153.67	80.16 %	(28,916.67)	(14,213.26)	-49.15 %
65000	Other Charges	(200,556.00)	160,786.40	80.17 %	(16,713.00)	207.28	1.24 %
66000	Employee Benefits	(555,876.00)	193,832.03	34.87 %	(46,323.00)	33,421.11	72.15 %
68000	Capital Outlay	(2,512,935.00)	1,770,934.00	70.47 %	(209,411.25)	8,289.00	3.96 %
Total Expenditures		(5,793,531.00)	3,794,356.85	65.49 %	(482,794.25)	145,419.07	30.12 %
Total	131 Highway/Public Works	(228,305.00)	2,995,952.89	1,312.26 %	(19,025.42)	(101,898.11)	-535.59

Template Name: LGC Defined
Created by: LGC

Loudon County Finance
Summary Financial Statement by Fund
October 2023

User: Erin Rice
Date/Time: 11/1/2023 9:44 AM
Page 15 of 23

141 General Purpose School		Year-To-Date			Month-To-Date		
Account	Description	Budget Estimate	Actual	% of Budget	Estimate Avg/Mth	Actual	% of Avg
Revenues							
40110	Current Property Tax	11,495,095.00	(38,055.76)	0.33 %	957,924.58	0.00	0.00 %
40120	Trustee's Collections - Prior Year	100,000.00	(13,887.98)	13.89 %	8,333.33	0.00	0.00 %
40125	Bankruptcy	15,000.00	(248.58)	1.66 %	1,250.00	0.00	0.00 %
40130	Cir Clk/Clk & Master Collections-Pr Yr	175,000.00	(24,766.91)	14.15 %	14,583.33	(6,309.08)	43.26 %
40140	Interest And Penalty	35,000.00	(3,656.96)	10.45 %	2,916.67	0.00	0.00 %
40163	Payments In Lieu Of Taxes - Other	324,645.00	0.00	0.00 %	27,053.75	0.00	0.00 %
40210	Local Option Sales Tax	4,800,000.00	(1,773,422.52)	36.95 %	400,000.00	(551,296.24)	137.82 %
40275	Mixed Drink Tax	35,000.00	(13,734.43)	39.24 %	2,916.67	(3,427.11)	117.50 %
40320	Bank Excise Tax	30,000.00	0.00	0.00 %	2,500.00	0.00	0.00 %
41110	Marriage Licenses	1,200.00	(399.00)	33.25 %	100.00	(166.25)	166.25 %
43570	Receipts From Individual Schools	15,000.00	(968.00)	6.45 %	1,250.00	0.00	0.00 %
43990	Other Charges For Services	5,550.00	0.00	0.00 %	462.50	0.00	0.00 %
44110	Investment Income	75,000.00	(26,385.31)	35.18 %	6,250.00	0.00	0.00 %
44160	Retirees' Insurance Payments	62,400.00	(33,877.03)	54.29 %	5,200.00	(3,084.29)	59.31 %
44170	Miscellaneous Refunds	2,000.00	(1,288.60)	64.43 %	166.67	(314.48)	188.69 %
46510	TISA	30,643,452.00	(9,181,556.96)	29.96 %	2,553,621.00	(3,060,518.98)	119.85 %
46511	Basic Education Program	0.00	0.00	0.00 %	0.00	0.00	0.00 %
46515	Early Childhood Education	838,165.00	(135,878.30)	16.21 %	69,847.08	(71,285.80)	102.06 %
46590	Other State Education Funds	158,467.00	(30,959.20)	19.54 %	13,205.58	(5,847.10)	44.28 %
46591	Coordinated School Health	0.00	(24,711.07)	0.00 %	0.00	0.00	0.00 %
46610	Career Ladder Program	67,000.00	(20,025.42)	29.89 %	5,583.33	(18,862.02)	337.83 %
46790	Other Vocational	2,863,142.00	(438,320.82)	15.31 %	238,595.17	(126,519.84)	53.03 %
46851	State Revenue Sharing -T.V.A.	1,150,000.00	(4,964.71)	0.43 %	95,833.33	(1,654.89)	1.73 %
46981	Safe Schools	196,802.00	(2,124.45)	1.08 %	16,400.17	(2,124.45)	12.95 %
47147	Safe And Drug-Free Schools-St Grants	0.00	0.00	0.00 %	0.00	0.00	0.00 %
47590	Other Federal Through State	210,632.00	(20,573.07)	9.77 %	17,552.67	(20,573.07)	117.21 %
47640	Rotc Reimbursement	71,000.00	0.00	0.00 %	5,916.67	0.00	0.00 %
48610	Donations	21,798.00	(28,327.64)	129.96 %	1,816.50	(6,580.14)	362.24 %
49700	Insurance Recovery	3,661.00	(474,131.17)	12,950.87 %	305.08	(425,804.84)	19,570.01 %
Total Revenues		53,395,009.00	(12,292,263.89)	23.02 %	4,449,584.08	(4,304,368.58)	96.74 %
Expenditures							
58900	Miscellaneous	0.00	0.00	0.00 %	0.00	0.00	0.00 %
71100	Regular Instruction Program	(27,207,857.00)	7,185,688.29	26.41 %	(2,267,321.42)	2,198,464.27	96.96 %
71200	Special Education Program	(3,989,088.00)	1,048,907.10	26.29 %	(332,424.00)	326,811.13	98.31 %
71300	Vocational Education Program	(3,944,315.00)	1,251,371.29	31.73 %	(328,692.92)	476,534.26	144.98 %
72110	Attendance	(78,967.00)	26,495.66	33.55 %	(6,580.58)	6,539.84	99.38 %
72120	Health Services	(903,084.00)	87,594.89	9.70 %	(75,257.00)	16,908.58	22.47 %

Template Name: LGC Defined
Created by: LGC

Loudon County Finance
Summary Financial Statement by Fund
October 2023

User: Erin Rice
Date/Time: 11/1/2023 9:44 AM
Page 16 of 23

141 General Purpose School		Year-To-Date			Month-To-Date		
Account	Description	Budget Estimate	Actual	% of Budget	Estimate Avg/Mth	Actual	% of Avg
72130	Other Student Support	(2,029,667.00)	366,687.94	18.07 %	(169,138.92)	102,311.60	60.49 %
72210	Regular Instruction Program	(2,150,911.00)	532,811.74	24.77 %	(179,242.58)	161,483.86	90.09 %
72220	Special Education Program	(624,193.00)	243,505.28	39.01 %	(52,016.08)	31,382.85	60.33 %
72230	Vocational Education Program	(183,179.00)	62,104.62	33.90 %	(15,264.92)	15,321.93	100.37 %
72250	Technology	(1,114,211.00)	664,814.83	59.67 %	(92,850.92)	48,308.59	52.03 %
72310	Board Of Education	(828,152.00)	318,686.01	38.48 %	(69,012.67)	24,085.16	34.90 %
72320	Office Of The Superintendent	(418,951.00)	187,289.37	44.70 %	(34,912.58)	29,705.24	85.08 %
72410	Office Of The Principal	(1,357,099.00)	489,138.89	36.04 %	(113,091.58)	95,929.38	84.82 %
72510	Fiscal Services	(97,535.00)	31,949.47	32.76 %	(8,127.92)	8,287.87	101.97 %
72610	Operation Of Plant	(4,501,629.00)	3,461,105.22	76.89 %	(375,135.75)	567,896.43	151.38 %
72620	Maintenance Of Plant	(277,000.00)	94,431.40	34.09 %	(23,083.33)	18,929.42	82.00 %
72710	Transportation	(2,443,128.00)	748,078.77	30.62 %	(203,594.00)	241,918.38	118.82 %
72901	COVID-19 Expenditures	(50,001.00)	4,078.30	8.16 %	(4,166.75)	0.00	0.00 %
73300	Community Services	(88,909.00)	35,692.01	40.14 %	(7,409.08)	6,589.11	88.93 %
73400	Early Childhood Education	(982,587.00)	291,790.14	29.70 %	(81,882.25)	70,015.82	85.51 %
76100	Regular Capital Outlay	(217,599.00)	6,540.00	3.01 %	(18,133.25)	6,540.00	36.07 %
Total Expenditures		(53,488,062.00)	17,138,761.22	32.04 %	(4,457,338.50)	4,453,963.72	99.92 %
Total	141 General Purpose School	(93,053.00)	4,846,497.33	5,208.32 %	(7,754.42)	149,595.14	1,929.16

Template Name: LGC Defined
Created by: LGC

Loudon County Finance
Summary Financial Statement by Fund
October 2023

User: Erin Rice
Date/Time: 11/1/2023 9:44 AM
Page 17 of 23

142 School Federal Projects		Year-To-Date			Month-To-Date		
Account	Description	Budget Estimate	Actual	% of Budget	Estimate Avg/Mth	Actual	% of Avg
Revenues							
47131	Vocational Educ - Basic Grants To	83,363.11	(34,421.71)	41.29 %	6,946.93	(13,580.94)	195.50 %
47141	Title 1 Grants To Local Educ Agencies	1,003,249.72	(229,099.53)	22.84 %	83,604.14	(61,963.96)	74.12 %
47143	Special Education - Grants To States	1,231,331.00	(309,180.40)	25.11 %	102,610.92	(88,998.21)	86.73 %
47145	Special Education Preschool Grants	24,667.00	(7,576.20)	30.71 %	2,055.58	(3,768.80)	183.34 %
47146	English Language Acquisition Grants	30,101.98	(2,981.60)	9.90 %	2,508.50	(1,226.72)	48.90 %
47147	Safe And Drug-Free Schools-St Grants	1,650.00	(412.25)	24.98 %	137.50	0.00	0.00 %
47150	21st Century Community Learning	74,250.00	0.00	0.00 %	6,187.50	0.00	0.00 %
47189	Eisenhower Prof Development State	180,978.49	(54,813.05)	30.29 %	15,081.54	(8,359.92)	55.43 %
47307	COVID-19 Grant B	71,250.00	(136.88)	0.19 %	5,937.50	0.00	0.00 %
47309	COVID-19 Grant D	117,000.00	(51,200.00)	43.76 %	9,750.00	(18,200.00)	186.67 %
47401	American Rescue Plan Act Grant #1	4,365,943.89	(1,538,071.60)	35.23 %	363,828.66	(653,778.37)	179.69 %
47402	American Rescue Plan Act Grant #2	2,443.51	(2,443.51)	100.00 %	203.63	(2,443.51)	1,200.00 %
47404	American Rescue Plan Act Grant #4	14,241.53	0.00	0.00 %	1,186.79	0.00	0.00 %
47590	Other Federal Through State	94,626.04	(51,151.46)	54.06 %	7,885.50	0.00	0.00 %
Total Revenues		7,295,096.27	(2,281,488.19)	31.27 %	607,924.69	(852,320.43)	140.20 %
Expenditures							
71100	Regular Instruction Program	(3,506,901.06)	1,379,583.93	39.34 %	(292,241.76)	143,484.49	49.10 %
71200	Special Education Program	(899,040.50)	219,794.53	24.45 %	(74,920.04)	72,113.22	96.25 %
71300	Vocational Education Program	(47,170.86)	37,102.74	78.66 %	(3,930.91)	888.00	22.59 %
72120	Health Services	(656,638.69)	157,825.53	24.04 %	(54,719.89)	52,623.31	96.17 %
72130	Other Student Support	(501,050.30)	134,319.85	26.81 %	(41,754.19)	50,137.98	120.08 %
72210	Regular Instruction Program	(765,319.43)	308,699.62	40.34 %	(63,776.62)	38,712.74	60.70 %
72220	Special Education Program	(435,316.55)	259,750.11	59.67 %	(36,276.38)	26,972.77	74.35 %
72230	Vocational Education Program	(4,300.00)	1,895.87	44.09 %	(358.33)	844.71	235.73 %
72710	Transportation	(79,500.00)	78,199.88	98.36 %	(6,625.00)	78,199.88	1,180.38 %
73100	Food Service	(5,608.88)	96.65	1.72 %	(467.41)	0.00	0.00 %
73300	Community Services	(394,250.00)	54,186.35	13.74 %	(32,854.17)	44,142.16	134.36 %
Total Expenditures		(7,295,096.27)	2,631,455.06	36.07 %	(607,924.69)	508,119.26	83.58 %
Total	142 School Federal Projects	0.00	349,966.87	100.00 %	0.00	(344,201.17)	0.00 %

Template Name: LGC Defined
Created by: LGC

Loudon County Finance
Summary Financial Statement by Fund
October 2023

User: Erin Rice
Date/Time: 11/1/2023 9:44 AM
Page 18 of 23

143 Central Cafeteria		Year-To-Date			Month-To-Date		
Account	Description	Budget Estimate	Actual	% of Budget	Estimate Avg/Mth	Actual	% of Avg
Revenues							
43521	Lunch Payments - Children	560,000.00	(107,601.09)	19.21 %	46,666.67	(43,115.90)	92.39 %
43522	Lunch Payments - Adults	28,000.00	(5,877.05)	20.99 %	2,333.33	(2,880.20)	123.44 %
43523	Income From Breakfast	0.00	(13.88)	0.00 %	0.00	(8.90)	0.00 %
43525	A La Carte Sales	5,000.00	(904.40)	18.09 %	416.67	(527.15)	126.52 %
43570	Receipts From Individual Schools	100.00	(4.33)	4.33 %	8.33	(1.16)	13.92 %
44110	Investment Income	5,000.00	(4,029.79)	80.60 %	416.67	(118.07)	28.34 %
46520	School Food Service	27,197.00	(3,256.00)	11.97 %	2,266.42	(3,256.00)	143.66 %
47111	USDA School Lunch Program	1,427,731.00	(174,633.69)	12.23 %	118,977.58	(174,633.69)	146.78 %
47113	Breakfast	512,937.00	(50,791.39)	9.90 %	42,744.75	(50,791.39)	118.82 %
47114	USDA - Other	302,128.00	(56,499.00)	18.70 %	25,177.33	0.00	0.00 %
47990	Other Direct Federal Revenue	263,000.00	(134,179.00)	51.02 %	21,916.67	(62,145.00)	283.55 %
	Total Revenues	3,131,093.00	(537,789.62)	17.18 %	260,924.42	(337,477.46)	129.34 %
Expenditures							
73100	Food Service	(3,155,029.00)	1,884,198.25	59.72 %	(262,919.08)	243,779.20	92.72 %
	Total Expenditures	(3,155,029.00)	1,884,198.25	59.72 %	(262,919.08)	243,779.20	92.72 %
Total	143 Central Cafeteria	(23,936.00)	1,346,408.63	5,625.04 %	(1,994.67)	(93,698.26)	-4,697.44

Template Name: LGC Defined
Created by: LGC

Loudon County Finance
Summary Financial Statement by Fund
October 2023

User: Erin Rice
Date/Time: 11/1/2023 9:44 AM
Page 19 of 23

151 General Debt Service		Year-To-Date			Month-To-Date		
Account	Description	Budget Estimate	Actual	% of Budget	Estimate Avg/Mth	Actual	% of Avg
Revenues							
40110	Current Property Tax	924,760.00	(3,061.19)	0.33 %	77,063.33	0.00	0.00 %
40120	Trustee's Collections - Prior Year	10,000.00	(2,235.49)	22.35 %	833.33	0.00	0.00 %
40125	Bankruptcy	1,000.00	(27.17)	2.72 %	83.33	0.00	0.00 %
40130	Cir Clk/Clk & Master Collections-Pr Yr	10,000.00	(4,283.10)	42.83 %	833.33	(1,091.07)	130.93 %
40140	Interest And Penalty	6,000.00	(309.79)	5.16 %	500.00	0.00	0.00 %
40163	Payments In Lieu Of Taxes - Other	84,508.00	(46,296.00)	54.78 %	7,042.33	0.00	0.00 %
40320	Bank Excise Tax	1,000.00	0.00	0.00 %	83.33	0.00	0.00 %
44110	Investment Income	3,000.00	(5,254.21)	175.14 %	250.00	0.00	0.00 %
44514	Revenue From Joint Ventures (Govt	27,000.00	0.00	0.00 %	2,250.00	0.00	0.00 %
48140	Contracted Services	203,472.00	(50,868.00)	25.00 %	16,956.00	0.00	0.00 %
49800	Transfers In	150,000.00	0.00	0.00 %	12,500.00	0.00	0.00 %
Total Revenues		1,420,740.00	(112,334.95)	7.91 %	118,395.00	(1,091.07)	0.92 %
Expenditures							
82110	General Government	(875,000.00)	0.00	0.00 %	(72,916.67)	0.00	0.00 %
82210	General Government	(446,628.00)	0.00	0.00 %	(37,219.00)	0.00	0.00 %
82310	General Government	(240,972.00)	68,994.46	28.63 %	(20,081.00)	17,456.00	86.93 %
Total Expenditures		(1,562,600.00)	68,994.46	4.42 %	(130,216.67)	17,456.00	13.41 %
Total	151 General Debt Service	(141,860.00)	(43,340.49)	-30.55 %	(11,821.67)	16,364.93	138.43 %

Template Name: LGC Defined
Created by: LGC

Loudon County Finance
Summary Financial Statement by Fund
October 2023

User: Erin Rice
Date/Time: 11/1/2023 9:44 AM
Page 20 of 23

156 Education Debt Service		Year-To-Date			Month-To-Date		
Account	Description	Budget Estimate	Actual	% of Budget	Estimate Avg/Mth	Actual	% of Avg
Revenues							
40110	Current Property Tax	2,680,127.00	(9,841.99)	0.37 %	223,343.92	0.00	0.00 %
40120	Trustee's Collections - Prior Year	60,000.00	(8,185.11)	13.64 %	5,000.00	0.00	0.00 %
40125	Bankruptcy	3,000.00	(116.58)	3.89 %	250.00	0.00	0.00 %
40130	Cir Clk/Clk & Master Collections-Pr Yr	46,000.00	(10,055.31)	21.86 %	3,833.33	(2,561.47)	66.82 %
40140	Interest And Penalty	18,000.00	(1,076.05)	5.98 %	1,500.00	0.00	0.00 %
40163	Payments In Lieu Of Taxes - Other	162,060.00	0.00	0.00 %	13,505.00	0.00	0.00 %
40285	Adequate Facilities/Development Tax	1,450,000.00	(97,771.29)	6.74 %	120,833.33	0.00	0.00 %
44110	Investment Income	60,000.00	(30,066.70)	50.11 %	5,000.00	0.00	0.00 %
	Total Revenues	4,479,187.00	(157,113.03)	3.51 %	373,265.58	(2,561.47)	0.69 %
Expenditures							
82130	Education	(3,777,000.00)	0.00	0.00 %	(314,750.00)	0.00	0.00 %
82230	Education	(1,012,621.00)	21,519.58	2.13 %	(84,385.08)	0.00	0.00 %
82330	Education	(125,000.00)	504.11	0.40 %	(10,416.67)	0.00	0.00 %
	Total Expenditures	(4,914,621.00)	22,023.69	0.45 %	(409,551.75)	0.00	0.00 %
Total	156 Education Debt Service	(435,434.00)	(135,089.34)	-31.02 %	(36,286.17)	(2,561.47)	-7.06 %

Template Name: LGC Defined
Created by: LGC

Loudon County Finance
Summary Financial Statement by Fund
October 2023

User: Erin Rice
Date/Time: 11/1/2023 9:44 AM
Page 21 of 23

171 General Capital Projects		Year-To-Date			Month-To-Date		
Account	Description	Budget Estimate	Actual	% of Budget	Estimate Avg/Mth	Actual	% of Avg
Revenues							
40125	Trustee's Collections - Bankruptcy	0.00	(2.77)	0.00 %	0.00	0.00	0.00 %
40130	Cir Clk/Clk & Master Collections-Pr Yr	0.00	(425.09)	0.00 %	0.00	(108.29)	0.00 %
40140	Interest And Penalty	0.00	(1.80)	0.00 %	0.00	0.00	0.00 %
40163	Payments In Lieu Of Taxes - Other	127,487.00	(122,278.00)	95.91 %	10,623.92	0.00	0.00 %
44110	Investment Income	0.00	(1,104.68)	0.00 %	0.00	0.00	0.00 %
44170	Miscellaneous Refunds	0.00	(79.52)	0.00 %	0.00	(79.52)	0.00 %
44570	Contributions & Gifts	0.00	(964.50)	0.00 %	0.00	(794.50)	0.00 %
49200	Notes Issued	0.00	(25,000.01)	0.00 %	0.00	(25,000.01)	0.00 %
49700	Insurance Recovery	0.00	(1,077,061.91)	0.00 %	0.00	(1,077,061.91)	0.00 %
Total Revenues		127,487.00	(1,226,918.28)	962.39 %	10,623.92	(1,103,044.23)	10,382.65
Expenditures							
91110	General Administration Projects	(186,000.00)	53,181.98	28.59 %	(15,500.00)	21,452.89	138.41 %
91120	Administration Of Justice Projects	(8,000.00)	198,977.16	2,487.21 %	(666.67)	106,168.67	15,925.30 %
91130	Public Safety Projects	(77,470.00)	201,828.66	260.52 %	(6,455.83)	32,185.10	498.54 %
91150	Social, Cultural And Recreation	(6,000.00)	0.00	0.00 %	(500.00)	0.00	0.00 %
91190	Other General Government Projects	(70,796.00)	0.00	0.00 %	(5,899.67)	0.00	0.00 %
99100	Transfers Out	(95,000.00)	0.00	0.00 %	(7,916.67)	0.00	0.00 %
Total Expenditures		(443,266.00)	453,987.80	102.42 %	(36,938.83)	159,806.66	432.63 %
Total	171 General Capital Projects	(315,779.00)	(772,930.48)	-244.77 %	(26,314.92)	(943,237.57)	-3,584.42

Template Name: LGC Defined
Created by: LGC

Loudon County Finance
Summary Financial Statement by Fund
October 2023

User: Erin Rice
Date/Time: 11/1/2023 9:44 AM
Page 22 of 23

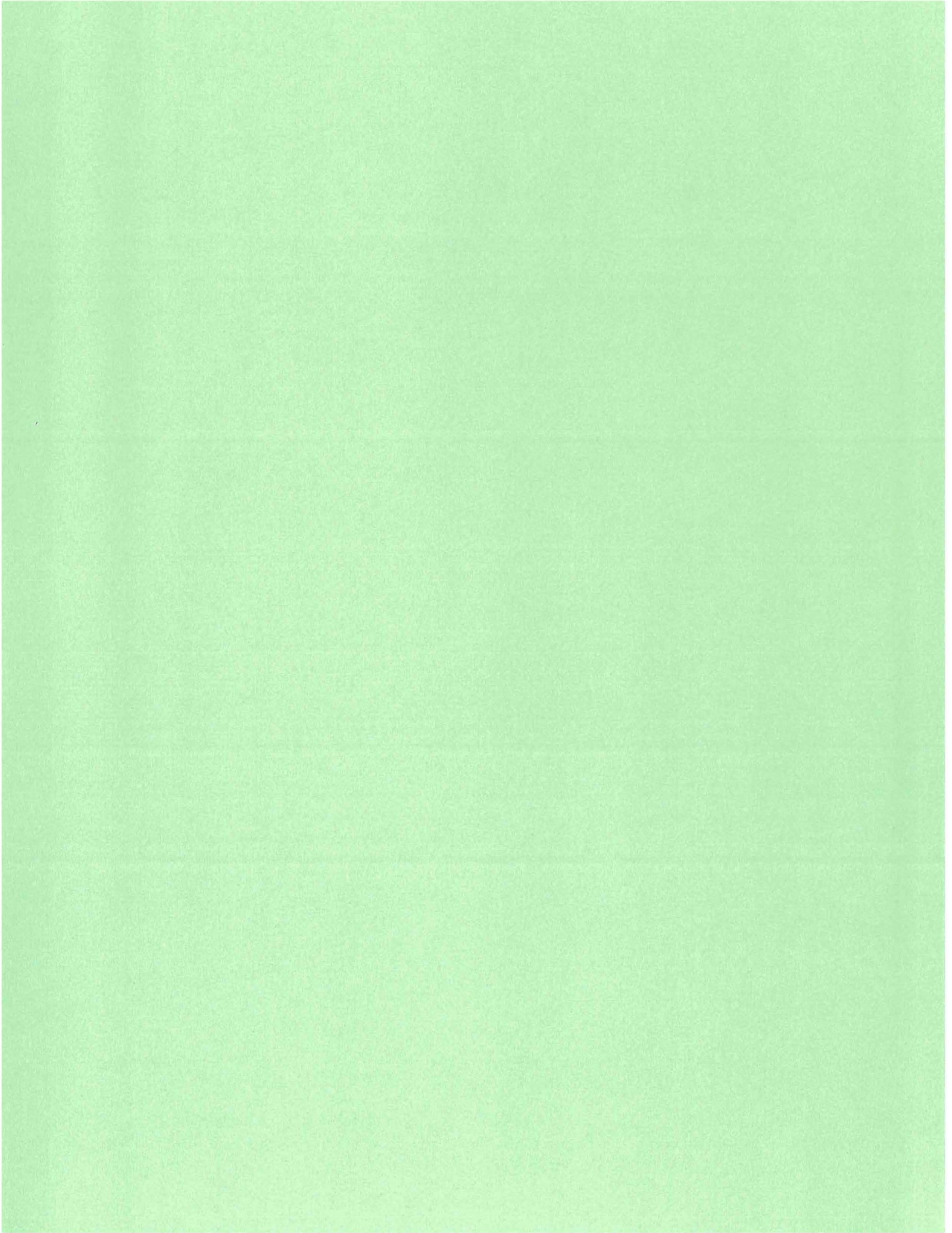
176 Highway Capital Projects		Year-To-Date			Month-To-Date		
Account	Description	Budget Estimate	Actual	% of Budget	Estimate Avg/Mth	Actual	% of Avg
Revenues							
40110	Current Property Tax	125,228.00	(414.55)	0.33 %	10,435.67	0.00	0.00 %
40120	Trustee's Collections - Prior Year	2,225.00	(334.54)	15.04 %	185.42	0.00	0.00 %
40125	Trustee's Collections - Bankruptcy	300.00	(6.62)	2.21 %	25.00	0.00	0.00 %
40130	Cir Clk/Clk & Master Collections-Pr Yr	3,500.00	(731.33)	20.90 %	291.67	(186.30)	63.87 %
40140	Interest And Penalty	1,000.00	(43.23)	4.32 %	83.33	0.00	0.00 %
40163	Payments In Lieu Of Taxes - Other	9,390.00	0.00	0.00 %	782.50	0.00	0.00 %
40320	Bank Excise Tax	200.00	0.00	0.00 %	16.67	0.00	0.00 %
	Total Revenues	141,843.00	(1,530.27)	1.08 %	11,820.25	(186.30)	1.58 %
Expenditures							
91200	Highway & Street Capital Projects	(181,000.00)	25,024.23	13.83 %	(15,083.33)	25,000.00	165.75 %
	Total Expenditures	(181,000.00)	25,024.23	13.83 %	(15,083.33)	25,000.00	165.75 %
Total 176	Highway Capital Projects	(39,157.00)	23,493.96	60.00 %	(3,263.08)	24,813.70	760.44 %

Template Name: LGC Defined
Created by: LGC

Loudon County Finance
Summary Financial Statement by Fund
October 2023

User: Erin Rice
Date/Time: 11/1/2023 9:44 AM
Page 23 of 23

177 Education Capital Projects		Year-To-Date			Month-To-Date		
Account	Description	Budget Estimate	Actual	% of Budget	Estimate Avg/Mth	Actual	% of Avg
Revenues							
40285	Adequate Facilities/Development Tax	200,000.00	(208,757.97)	104.38 %	16,666.67	0.00	0.00 %
44110	Investment Income	0.00	(3,346.43)	0.00 %	0.00	0.00	0.00 %
	Total Revenues	200,000.00	(212,104.40)	106.05 %	16,666.67	0.00	0.00 %
Expenditures							
91300	Education Capital Projects	(3,409,397.00)	5,769,035.00	169.21 %	(284,116.42)	111,919.00	39.39 %
	Total Expenditures	(3,409,397.00)	5,769,035.00	169.21 %	(284,116.42)	111,919.00	39.39 %
Total	177 Education Capital Projects	(3,209,397.00)	5,556,930.60	173.15 %	(267,449.75)	111,919.00	41.85 %





Jason E. Mumpower
Comptroller

Report On Debt Obligation

Receipt Date: 10/20/2023

Entity and Debt Information

Entity Name

Loudon County

Entity Address

100 River Road #106 Loudon, Tennessee 37774

Debt Issue Name

Rural School Capital Outlay Note, Series 2023

Debt Issue Face Amount

\$3,000,000.00

Face Amount Premium or Discount?

N/A

Tax Status

Tax - Exempt

Interest Type

True Interest Cost (TIC)

True Interest Cost (TIC)

4.991117%

Debt Obligation

Note - Capital Outlay Note

Moody's Rating

Unrated

Standard & Poor's Rating

Unrated

Fitch Rating

Unrated

Other Rating Agency Name

N/A

Other Rating Agency Rating

N/A

Security

General Obligation

Type of Sale Per Authorizing Document

Informal Bid

Dated Date

10/20/2023

Issue/Closing Date

10/20/2023

Final Maturity Date

6/1/2036

Debt Purpose		
Purpose	Percentage	Description
Education	100%	Payment for land and costs related to building and design of school
General Government	0%	N/A
Other	0%	N/A
Refunding	0%	N/A
Utilities	0%	N/A

Cost of Issuance and Professionals			
Does your Debt Issue have costs or professionals?			
Yes			
Description	Amount	Recurring Portion	Firm Name
Financial Advisor Fees	\$16,500.00	N/A	Cumberland Securities Company, Inc.
Legal Fees - Bond Counsel	\$7,500.00	N/A	Bass, Berry & Sims PLC
Legal Fees - Bank Counsel	\$1,000.00	N/A	Haygood Moody Hodge PLC
TOTAL COSTS	\$25,000.00		

Maturity Dates, Amounts, and Interest Rates

Year	Amount	Interest Rate
2024	\$231,000.00	4.99
2025	\$231,000.00	4.99
2026	\$231,000.00	4.99
2027	\$231,000.00	4.99
2028	\$231,000.00	4.99
2029	\$231,000.00	4.99
2030	\$231,000.00	4.99
2031	\$231,000.00	4.99
2032	\$231,000.00	4.99
2033	\$231,000.00	4.99
2034	\$230,000.00	4.99
2035	\$230,000.00	4.99
2036	\$230,000.00	4.99

See final page for Submission Details and Signatures

Submission Details and Signatures

Is there an official statement or disclosure document, as applicable, that will be posted to EMMA: <https://emma.msrb.org/>?

No

Signature - Chief Executive or Finance Officer of the Public Entity

Name

Rollen "Buddy" Bradshaw

Title/Position

Mayor

Email

bradshawb@loudoncounty-tn.gov

Alternate Email

ricee@loudoncounty-tn.gov

Signature - Preparer (Submitter) of This Form

Name

Scott Gibson

Title/Position

Senior Vice President

Email

scott.gibson@cumberlandsecurities.com

Alternate Email

amber.sayle@cumberlandsecurities.com

Relationship to Public Entity

Financial Advisor

Organization

Cumberland Securities Company, Inc.

Verification of Form Accuracy

By checking the box below as the signing of this form, I attest the following:

1. I certify that to the best of my knowledge the information in this form is accurate.
2. The debt herein complies with the approved Debt Management Policy of the public entity.
3. If the form has been prepared by someone other than the CEO or CFO, the CEO or CFO has authorized the submission of this document.

☒ Verify Form Accuracy

Date to be Presented at Public Meeting

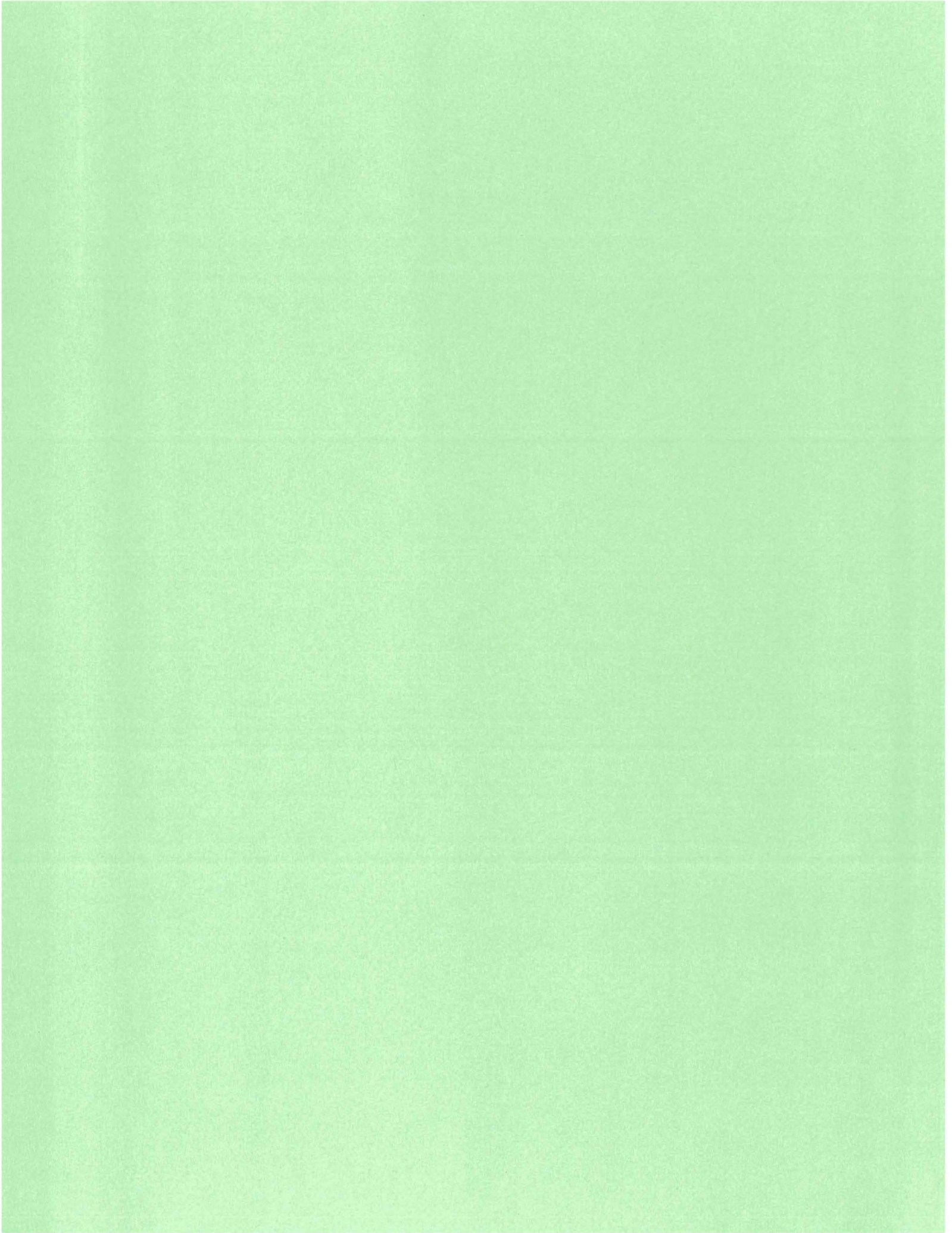
11/06/2023

Date to be emailed/mailed to members of the governing body

10/20/2023

Final Confirmation:

I hereby submit this report to the Division of Local Government Finance of the Tennessee Comptroller of the Treasury and understand my legal responsibility to: File this report with the members of the governing body no later than 45 days after the issuance or execution of the debt disclosed on this form. The Report is to be delivered to each member of the Governing Body and presented at a public meeting of the body. If there is not a scheduled public meeting of the governing body within forty-five (45) days, the report will be delivered by email or regular US mail to meet the 45-day requirement and also presented at the next scheduled meeting.



LOUDON COUNTY CLERK
RILEY WAMPLER COUNTY CLERK
101 MULBERRY ST STE 200
LOUDON TN 37774
Telephone 865-458-3314
Fax 865-458-9891

Notaries to be elected November 06, 2023

LISA BRIDGES
TEENA CARTER
DONNA CONNATSER
CYNTHIA M DUNLAP
SANDRA GIBSON
SANDRA A HAGAN
DENISSA JONES
JESSICA WEBB MOORE

SYDNEE D. MOYERS
WESLEY PETTY
LINDA GAIL SMITH
ANGELA M STOERMER
SONYA THOMAS-BROWN
CINDEE RENE WATSON