

Loudon County Commission Workshop

Loudon, Tennessee

Monday, April 18, 2022

Courthouse Annex

6:00 pm

1) Comments by Members of the General Public

2) Loudon County Codes Enforcement Director – Jim Jenkins

A) RESOLUTION ADOPTED BY THE LOUDON COUNTY COMMISSION CLOSING RIGHT-OF-WAY NEAR MUDDY CREEK ROAD

B) A RESOLUTION AMENDING THE ZONING MAP OF LOUDON COUNTY, TENNESSEE, PURSUANT TO CHAPTER SEVEN, §13-7-105 OF THE TENNESSEE CODE ANNOTATED, TO REZONE FROM C-2/PUD, GENERAL COMMERCIAL DISTRICT WITH A PLANNED UNIT DEVELOPMENT TO C-2, GENERAL COMMERCIAL DISTRICT. LOUDON COUNTY TAX MAP 027, PARCELS 017.01, 025.00, 087.00, & 090.00 LOCATED HWY 321 LOUDON COUNTY, TN, SITUATED IN THE 3RD LEGISLATIVE DISTRICT

C) A RESOLUTION OF THE LOUDON COUNTY COMMISSION ACCEPTING JACKSONIAN WAY., RACHEL WAY., CHALMETTE WAY., AND OLD HICKORY LN. LOCATED IN JACKSON CROSSING SUBDIVISION INTO THE PUBLIC ROADWAY SYSTEM, SAID ROAD LOCATED IN THE 5th LEGISLATIVE DISTRICT OF LOUDON COUNTY, TENNESSEE

3) Loudon County Procurement Director – Susan Huskey

A) 2022-2023 Employees Medical, Dental and Vision Insurance

4) Commissioner – Bill Satterfield

A) Recommendation that Loudon County no longer allows PUD's

5) Director of Accounts and Budgets – Tracy Blair

B) Budget Amendments

Loudon County Commission

Re-Zone

**RESOLUTION ADOPTED BY THE LOUDON COUNTY COMMISSION
CLOSING RIGHT-OF-WAY NEAR MUDDY CREEK ROAD**

Agenda Item # 2A

RESOLUTION

**RESOLUTION ADOPTED BY THE LOUDON COUNTY COMMISSION
CLOSING A RIGHT-OF-WAY NEAR MUDDY CREEK ROAD.**

WHEREAS, the chief legislative body of the county has the authority, under Tennessee Code Annotated, (TCA) §13-3-406 to accept the dedication of roads, close existing roads, adopt standards for the acceptance of new roads and reopen previously closed or abandoned roads; and

WHEREAS, the Loudon County Regional Planning Commission has received for review a request from owners (or their representatives) of property located adjacent to an abandoned road, requesting the closing of that roadway or segment known as Williams Rd.; and

WHEREAS, applicant feels the described abandoned roadway has no present nor future public use, and desires that any county encumbrance caused by the presence of the road bed be removed; and

WHEREAS, identified affected property owners were notified and a public notice and description of the request appeared in the Loudon County Daily Edition on April 13, 2022 consistent with the provisions of Loudon County's Procedure for Closing a Public Road; and

WHEREAS, the Loudon County Regional Planning Commission has reviewed this matter, including the recommendation of the County Highway Superintendent, and based on its investigation has determined that, in its opinion, the closing of said road will not adversely affect any property owners or the present or future function of the County's roadway system, and recommends the closure of said road, described as follows:

NOW, THEREFORE, BE IT RESOLVED by the Loudon County Commission, in regular session assembled on this Day of May 2, 2022, that the afore described section of the abandoned roadway is hereby closed, with any interest the County has in the roadway being hereby relinquished as provided by law.

BE IT FURTHER RESOLVED that this Resolution shall take effect immediately, the public welfare requiring it.

This Resolution adopted May 2, 2022

Attest, County Court Clerk

Loudon County Chairman

Approved: Loudon County Mayor

The vote on the question of approval of this Resolution by the Planning Commission is as follows:

APPROVED: ____

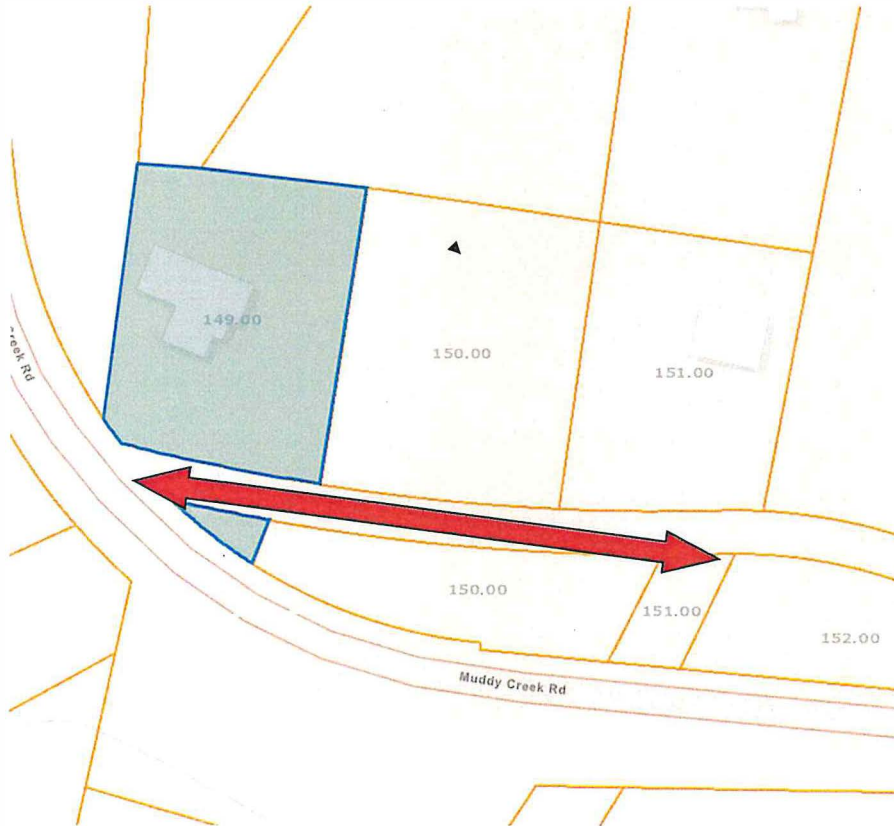
DISAPPROVED: ____

ATTEST: SECRETARY, LOUDON COUNTY
REGIONAL PLANNING COMMISSION
DATE: April 12, 2022

RESOLUTION NO. _____

ILLUSTRATION ATTACHMENT

RESOLUTION ADOPTED BY THE LOUDON COUNTY COMMISSION CLOSING THE RIGHT-OF-WAY, LOCATED ON LOUDON COUNTY, MUDDY CREEK ROAD. TAX MAP 016, PARCELS 149.00, 150.00, 151.00.



Loudon County Commission

Re-Zone

A RESOLUTION AMENDING THE ZONING MAP OF LOUDON COUNTY, TENNESSEE, PURSUANT TO CHAPTER SEVEN, §13-7-105 OF THE TENNESSEE CODE ANNOTATED, TO REZONE FROM C-2/PUD, GENERAL COMMERCIAL DISTRICT WITH A PLANNED UNIT DEVELOPMENT TO C-2, GENERAL COMMERCIAL DISTRICT. LOUDON COUNTY TAX MAP 027, PARCELS 017.01, 025.00, 087.00, & 090.00 LOCATED HWY 321 LOUDONCOUNTY, TN, SITUATED IN THE 3RD LEGISLATIVE DISTRICT

Agenda Item # 2B

RESOLUTION _____

A RESOLUTION AMENDING THE ZONING MAP OF LOUDON COUNTY, TENNESSEE, PURSUANT TO CHAPTER SEVEN, §13-7-105 OF THE TENNESSEE CODE ANNOTATED, TO REZONE FROM C-2/PUD, GENERAL COMMERCIAL DISTRICT WITH A PLANNED UNIT DEVELOPMENT TO C-2, GENERAL COMMERCIAL DISTRICT. LOUDON COUNTY TAX MAP 027, PARCELS 017.01, 025.00, 087.00, & 090.00 LOCATED HWY 321 LOUDON COUNTY, TN, SITUATED IN THE 3RD LEGISLATIVE DISTRICT

WHEREAS, the Loudon County Commission, in accordance with Chapter Seven, §13-7-105 of the Tennessee Code Annotated, may from time to time, amend the number, shape, boundary, area or any regulation of or within any district or districts, or any other provision of any zoning resolution, and

WHEREAS, the Regional Planning Commission has forwarded a recommendation regarding the amendment to the Zoning Map of Loudon County, Tennessee,

WHEREAS, a notice of public hearing and a description of the resolution appeared in the Daily Edition on April 13, 2022 consistent with the provisions of Tennessee Code Annotated, §13-7-105, and

NOW, THEREFORE, BE IT RESOLVED by the Loudon County Commission that the Zoning Map of Loudon County, Tennessee be amended as follows:

Located HWY 321, situated in the 3RD Legislative District, referenced by Tax Map 027, Parcels 017.01, 088.00, 090.00 to be rezoned from C-2/PUD (General Commercial District with a Planned Unit Development) to C-2 (General Commercial District).

BE IT FINALLY RESOLVED, that this Resolution shall take effect immediately, the public welfare requiring it.

ATTEST

LOUDON COUNTY CHAIRMAN

DATE: _____

APPROVED: LOUDON COUNTY MAYOR

The votes on the question of approval of this Resolution by the Planning Commission are as follows:

APPROVED: _____

DISAPPROVED: _____

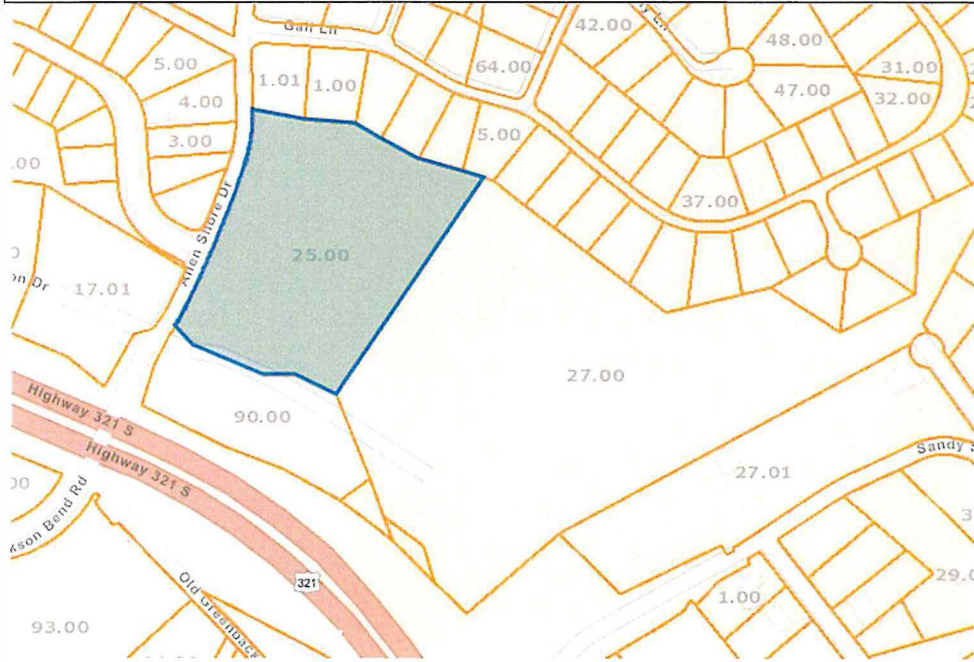
ABSTAINED: _____

ATTEST: SECRETARY LOUDON COUNTY
REGIONAL PLANNING COMMISSION
Dated: April 12, 2022

RESOLUTION NO. _____

ILLUSTRATION ATTACHMENT

REZONE FROM C-2/PUD (GENERAL COMMERCIAL DISTRICT WITH A PLANNED UNIT DEVELOPMENT) TO C-2 (GENERAL COMMERCIAL DISTRICT). REFERENCED BY LOUDON COUNTY TAX MAP 027, PARCELS 025.00, 027.00, 088.00, 090.00. LOCATED HWY 321., LOUDON COUNTY, TN, SITUATED IN THE 3RD LEGISLATIVE DISTRICT



Loudon County Commission

Re-Zone

A RESOLUTION OF THE LOUDON COUNTY COMMISSION ACCEPTING JACKSONIAN WAY., RACHEL WAY., CHALMETTE WAY., AND OLD HICKORY LN. LOCATED IN JACKSON CROSSING SUBDIVISION INTO THE PUBLIC ROADWAY SYSTEM, SAID ROAD LOCATED IN THE 5th LEGISLATIVE DISTRICT OF LOUDON COUNTY, TENNESSEE

Agenda Item # 2C

RESOLUTION _____

A RESOLUTION OF THE LOUDON COUNTY COMMISSION ACCEPTING JACKSONIAN WAY., RACHEL WAY., CHALLMETTE WAY., AND OLD HICKORY LN. LOCATED IN JACKSON CROSSING SUBDIVISION INTO THE PUBLIC ROADWAY SYSTEM, SAID ROAD LOCATED IN THE 5th LEGISLATIVE DISTRICT OF LOUDON COUNTY, TENNESSEE

WHEREAS, the Loudon County Commission has the authority under Tennessee Code Annotated to accept the dedication of roads, to adopt policies and standards for the acceptance of new roads and to reopen previously closed county roads; and

WHEREAS, the Loudon County Regional Planning Commission has received a request from the property owners of Jackson Crossing Subdivision to accept the following roads into the County Road system:

- 1) Jacksonian Way and
- 2) Rachel Way and
- 3) Challmette Way and
- 4) Old Hickory Ln

WHEREAS, the Loudon County Regional Planning Commission approved the preliminary and final plat for the construction of the road and right of way dedication consistent with the minimum requirements of the subdivision regulations for Loudon County; and

WHEREAS, the Loudon County Road Superintendent has inspected the road and recommends acceptance of the road as a Loudon County Public Road;

NOW, THEREFORE, BE IT RESOLVED, that the Loudon County Commission approves the acceptance of this road, as shown on the attached map and described in this resolution, into the County's public roadway system.

NOW, THEREFORE, BE IT FINALLY RESOLVED, that this Resolution shall take effect immediately the public welfare requiring it.

This Resolution adopted May 2, 2022

Attest, County Court Clerk

Loudon County Chairman

Approved: Loudon County Mayor

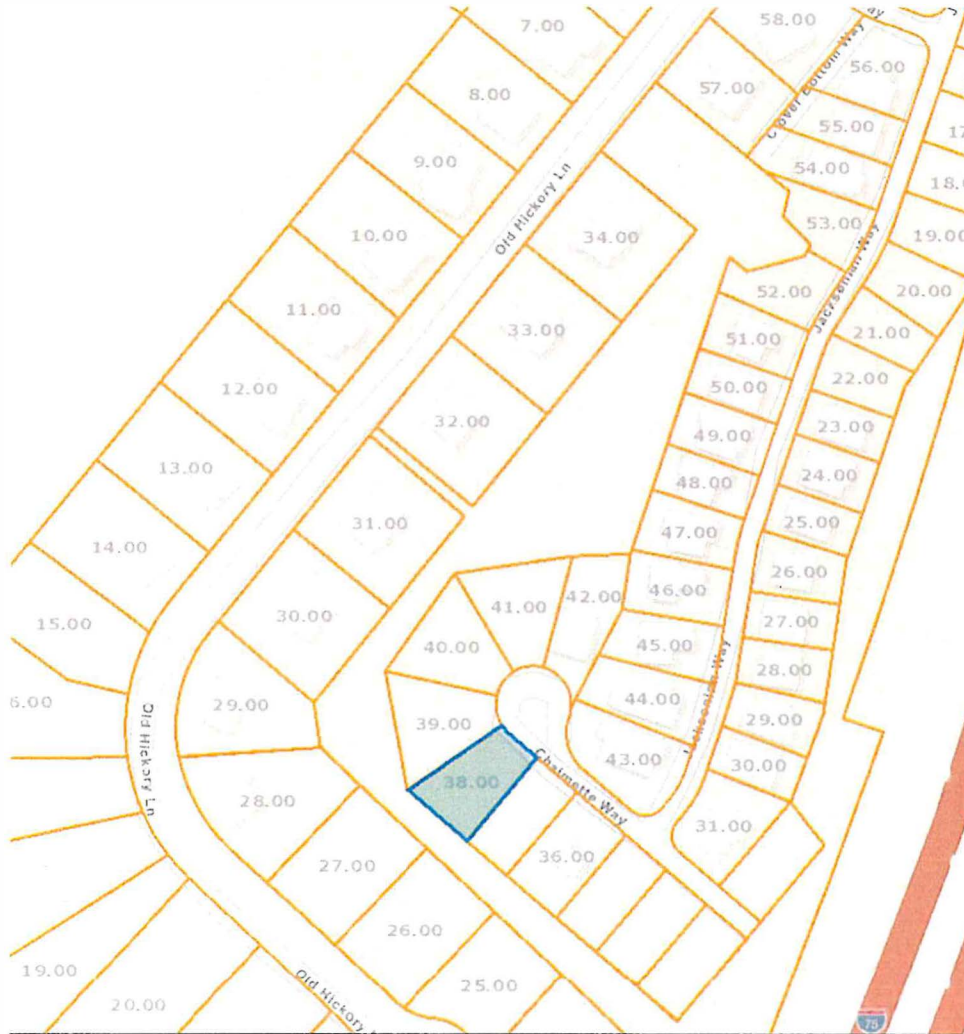
The vote on the question of approval of this Resolution by the Planning Commission is as follows:

APPROVED: _____

DISAPPROVED: _____

ATTEST: SECRETARY, LOUDON COUNTY
REGIONAL PLANNING COMMISSION
DATE: April 12, 2022

A RESOLUTION OF THE LOUDON COUNTY COMMISSION ACCEPTING JACKSONIAN WAY., RACHEK WAY., CHALMETTE WAY., AND OLD HICKORY LN. LOCATED IN JACKSON CROSSING SUBDIVISION INTO SAID ROAD SYSTEM LOCATED IN THE 5th LEGISLATIVE DISTRICT OF LOUDON COUNTY, TENNESSEE



Loudon County Commission

Employee Benefits

2022-2023 Employees Medical, Dental & Vision Insurance

Agenda Items # 3A

Loudon County 2022-2023

Benefits	Benefits	Benefits
	2021-2022	2022-2023
Cigna -Current	CIGNA-Current	CIGNA-Renewal
PPO -RV	Local Plus	Local Plus
	No Tennova	No Tennova
OC-Co Pay	\$35/SPC \$50	\$35/SPC \$50
UC/ER	\$100/\$250	\$100/\$250
Deductible	\$750/\$1500	\$750/\$1500
Co Insurance	90%	90%
Out Of Pocket	\$1500/\$3000	\$1500/\$3000
RX	\$15/\$40/\$70	\$15/\$40/\$70
Out of Network		
Deductible	\$1500/\$3000	\$1500/\$3000
Enrollment		
Employee	91	79
Employee +1	60	68
Employee+ Family	88	81
Total	239	228
Rates		2.95%
Employee	\$575.95	\$592.94
Employee +1	\$1,151.90	\$1,185.84
Employee + Fam	\$1,641.45	\$1,689.82
Monthly Cost	\$265,273.05	\$264,354.80
Annual Cost	\$3,183,276.60	\$3,172,257.60

2.95% Increase on Medical

No increase in Vision, Dental and EAP

Cigna is providing \$2500 to the County for an employee "Wellness Event"

Loudon County 2022-2023

Benefits summary

Dental Insurance

Current Carrier Cigna

Renewal Carrier Cigna

Rates

Employee \$29.39

Family \$86.30

Monthly estimated premium \$18,012.80

Percentage increase 0 %

Vision Insurance

Current Carrier Cigna

Renewal Carrier Cigna

Rates

Employee \$5.63

Employee+1 \$10.53

Employee +Family \$15.94

Monthly Estimated premium \$2,451.95

Percentage increase 0 %

Employee Assistance Program (EAP)

Current Carrier Cigna

Renewal Carrier Cigna

Rates

Total employees 228

Per Member per month \$2.12

Monthly Estimated Cost \$483.36

Percentage increase 0 %