

LOUDON COUNTY COMMISSION

Loudon, Tennessee

Monday, August 3, 2020

Courthouse Annex

6:00 P.M.

AGENDA

REGULAR MEETING

Public Hearing

- A. A RESOLUTION AMENDING THE ZONING MAP OF LOUDON COUNTY, TENNESSEE, PURSUANT TO CHAPTER SEVEN, §13-7-105 OF THE TENNESSEE CODE ANNOTATED, TO REZONE APPROXIMATELY 17.3 ACRES FROM A-1, AGRICULTURE-FORESTRY DISTRICT TO M-1, GENERAL INDUSTRIAL DISTRICT, LOUDON COUNTY TAX MAP 006, PARCEL 021.01 LOCATED AT 16250 EL CAMINO LN., LOUDON COUNTY, TN, SITUATED IN THE 5TH LEGISLATIVE DISTRICT
 - B. A RESOLUTION TO AMEND THE LOUDON COUNTY ZONING RESOLUTION, ARTICLE 5 ZONING DISTRICTS, SECTION 5.043 R-1 SUBURBAN RESIDENTIAL DISTRICT, PURSUANT TO TENNESSEE CODE ANNOTATED, SECTION 13-7-105
 - C. R-1 CURRENT AND PROPOSED LANGUAGE DOCUMENTS FOR REFERRAL BY THE LOUDON COUNTY COMMISSION
-

- 1. Opening of Meeting, Pledge of Allegiance to the Flag of the United States, Invocation
- 2. Roll Call
- 3. Adoption of the August 3, 2020 Loudon County Commission Agenda
- 4. Reading and Acceptance of the June 29, 2020 Loudon County Commission Meeting Minutes
- 5. General Public Comments

6. Mayor – Buddy Bradshaw

A. Boards and Committees

1. Ethics Committee – Robert Scott Newman
2. Planning & Commission (5th District) – Keith Buckles
3. Airport Authority
4. Audit Committee
5. Beer Board
6. Blair Bend Industrial Committee
7. Budget Committee
8. Capital Projects Committee – Matthew Tinker replacing Julia Hurley
9. Equalization Board
10. Financial Advisory Committee - Adam Waller replacing Matthew Tinker
11. Governmental Affairs Committee – Adam Waller replacing Julia Hurley
12. Loudon County Library Board
13. Litter Control Committee
14. Maintenance Committee- David Meers replacing Van Shaver
15. Planning Commission
16. Purchasing Committee – Adam Waller replacing Harold Duff
17. Roane State Maintenance & Operations Advisory Committee
18. Safety Committee
19. Salary Benefit AD-HOC Committee
20. Senior Citizens Executive Committee
21. Sheriffs Merit Services Board
22. Surplus Property Authority

*** All Boards and Committees without a name for a replacement, will have the terms extended with the current appointees.

7. Loudon County Codes Enforcement – Jim Jenkins

- A. A RESOLUTION AMENDING THE ZONING MAP OF LOUDON COUNTY, TENNESSEE, PURSUANT TO CHAPTER SEVEN, §13-7-105 OF THE TENNESSEE CODE ANNOTATED, TO REZONE APPROXIMATELY 17.3 ACRES FROM A-1, AGRICULTURE-FORESTRY DISTRICT TO M-1, GENERAL INDUSTRIAL DISTRICT, LOUDON COUNTY TAX MAP 006, PARCEL 021.01 LOCATED AT 16250 EL CAMINO LN., LOUDON COUNTY, TN, SITUATED IN THE 5TH LEGISLATIVE DISTRICT
- B. A RESOLUTION TO AMEND THE LOUDON COUNTY ZONING RESOLUTION, ARTICLE 5 ZONING DISTRICTS, SECTION 5.043 R-1 SUBURBAN RESIDENTIAL DISTRICT, PURSUANT TO TENNESSEE CODE ANNOTATED, SECTION 13-7-105
- C. R-1 CURRENT AND PROPOSED LANGUAGE DOCUMENTS FOR REFERRAL BY THE LOUDON COUNTY COMMISSION

8. Purchasing Director – Susan Huskey
 - A. Procurement for a Multi-Year Voice (Phone Service) Contract for Schools
9. Commissioner – Van Shaver
 - A. Consideration of changing our shared portion of AFT with Lenoir City Schools from 85/15% to 90/10% to take effect July 1, 2021
10. Director of Accounts and Budgets – Tracy Blair
 - A. Consideration of recommendation to approve Community Connect to provide five hotspots and \$ 2,000 programming stipend for required community workshops – Greenback Library
 - B. Consideration of recommendation to approve amendments in the following funds:
 1. General Purpose School Fund 141
 2. Central Cafeteria Fund 143
 - C. Distribution on Monthly Reports
11. Commissioner – David Meers
 - A. Bonds and Notaries
 1. Tina Sue Baker, Tammi A Bivens, Joseph Borczyk, Mary Sue Jordan, Teresa M Kidd, Shanan Lettieri, Jacob Phillips, Jane Raines, Rebecca Simmons

Loudon County Commission

June 29, 2020

***Commission Minutes
for Approval***

LOUDON COUNTY COMMISSOIN

LOUDON COUNTY, TENNESSEE

Monday, June 29, 2020
Courthouse Annex Building
5:00 P.M.

DRAFT COPY
Not Approved

REGULAR COMMISSION MEETING

(1) Public Hearing

A RESOLUTION AMENDING THE ZONING MAP OF LOUDON COUNTY, TENNESSEE PURSUANT TO CHAPTER SEVEN, § 13-7-105 OF THE TENNESSEE CODE ANNOTATED, TO REZONE APPROXIMATELY 14.4 ACRES FROM R-1, SUBURBAN RESIDENTIAL DISTRICT TO R-1 SUBURBAN RESIDENTIAL DISTRICT WITH PUD OVERLAY, LOUDON COUNTY TAX MAP007, PARCELS 002.04, 002.05 LOCATED AT HICKORY CREEK RD., LOUDON COUNTY, TN IN THE 5TH LEGISLATIVE DISTRICT

A RESOLUTION AMENDING THE ZONING MAP OF LOUDON COUNTY, TENNESSEE PURSUANT TO CHAPTER SEVEN §13-7-105 OF THE TENNESSEE CODE ANNOTATED, TO REZONE APPROXIMATELY 38.1 ACRES FROM A-2, RURAL RESIDENTAIL DISTRICT TO A-1, AGRICULTURE-FORESTRY DISTRICT WITH T-1 OVERLAY, LOUDON COUNTY TAX MAP056, PARCEL 181.00 LOCATED AT 5378 STEEKEE CREEK RD., LOUDON COUNTY, TN, SITUATED IN THE 4TH LEGISLATIVE DISTRICT

(2) Opening of Meeting

BE IT REMEMBERED that the Board of Commission of Loudon County convened in regular session in Loudon, Tennessee on the 29th day of June, 2020.

Commission Chairman, Henry Cullen called the meeting to order at 5:02 p.m.

Commissioner Bill Satterfield opened the County Commission Meeting by leading the Pledge of Allegiance to the Flag of the United States of America, and then gave the invocation.

(3) Roll Call

Upon Roll Call, the following Commissioners were present: **Kelly Brewster, David Meers, Julia Hurley, Matthew Tinker, Bill Satterfield, Gary Whitfield, Henry Cullen, Harold Duff, Van Shaver, and Adam Waller** (10)

Thereupon **Chairman Cullen** announced the presence of a quorum.

Also present was the **Honorable Mayor, Buddy Bradshaw, Director of Accounts and Budgets, Tracy Blair and Chief Deputy Clerk, Tammie Wampler.**

(4) Agenda Adoption

Chairman Cullen requested that the June 29, 2020 Agenda be adopted. **Mayor Buddy Bradshaw** asked to add to the agenda the re-appointment of **Commissioner Satterfield** to the TASS Board since his last term was a replacement and that term is ending. **Commissioner Shaver** made a motion to adopt the agenda with the addition presented by **Mayor Bradshaw**. **Commissioner Meers** seconded the motion.

Upon Voice Vote, the motion **PASSED** unanimously.

(5) Minutes Approved

Chairman Cullen requested that the June 01, 2020 minutes be accepted. **Commissioner Brewster** made a motion to accept the minutes. **Commissioner Shaver** addressed that there were two Budget Amendments that did not have the commissioner who had made the motion and seconded the motion and that these need to be reviewed and that the correction be made. Item 18, Item 19. **Commission Chairman Cullen** asked that these be reviewed and added to the minutes. **Commissioner Waller** seconded the motion.

Upon Voice Vote, the motion **PASSED** unanimously.

(6) General Public
Comments

Chairman Cullen opened the floor for the General Public Comments. The following people spoke:

- 1) **Tim Amos** – opposition to cell phone tower
- 2) **Russell Rackley** – PUD Overlay Hickory Creek RD / (presented two exhibits)
 - A) Letter stating sewer in this area **EXHIBIT 062920-A**
 - B) Traffic Impact Study **EXHIBIT 062920-B**

(7) Re-Zone
Hickory Creek
Road

Loudon County Codes Enforcement Director presented commission with the following two resolutions:

- 1) A RESOLUTION AMENDING THE ZONING MAP OF LOUDON COUNTY, TENNESSEE PURSUANT TO CHAPTER SEVEN, § 13-7-105 OF THE TENNESSEE CODE ANNOTATED, TO REZONE APPROXIMATELY 14.4 ACRES FROM R-1, SUBURBAN RESIDENTIAL DISTRICT TO R-1 SUBURBAN RESIDENTIAL DISTRICT WITH PUD OVERLAY, LOUDON COUNTY TAX MAP007, PARCELS 002.04, 002.05 LOCATED AT HICKORY CREEK RD., LOUDON COUNTY, TN IN THE 5TH LEGISLATIVE DISTRICT **RESOLUTION 062920-C**

Commissioner Shaver made a motion to deny the resolution, as we have in the past, until there is sewer. Commissioner Duff seconded the motion.

Chairman Cullen called for a Roll Call Vote.

Upon Roll Call Vote the following commissioners voted AYE to deny the zoning request:

Meers, Satterfield, Whitfield, Cullen, Duff, Shaver, Waller, Brewster (8)

The following commissioners voted NAY:

Hurley, Tinker (2)

The Rezoning Request is **DENIED (8/2)**

(8) Re-Zone 5378
Steekee Creek
Road

- 2) A RESOLUTION AMENDING THE ZONING MAP OF LOUDON COUNTY, TENNESSEE PURSUANT TO CHAPTER SEVEN §13-7-105 OF THE TENNESSEE CODE ANNOTATED, TO REZONE APPROXIMATELY 38.1 ACRES FROM A-2, RURAL RESIDENTIAL DISTRICT TO A-1, AGRICULTURE-FORESTRY DISTRICT WITH T-1 OVERLAY, LOUDON COUNTY TAX MAP056, PARCEL 181.00 LOCATED AT 5378 STEEKEE CREEK RD., LOUDON COUNTY, TN, SITUATED IN THE 4TH LEGISLATIVE DISTRICT **RESOLUTION 062920-D**

Commissioner Whitfield made a motion to deny the resolution. Commissioner Satterfield seconded the motion.

Chairman Cullen called for a Roll Call Vote.

Upon Roll Call Vote the following commissioners voted AYE to deny the zoning request:

Satterfield, Whitfield, Cullen, Duff, Shaver, Waller, Brewster, Meers (8)

The following commissioners voted NAY: **Hurley, Tinker (2)**

The Rezoning Request is **DENIED (8/2)**

(9) Boards &
Committees –
TASS Board

Mayor Bradshaw requested that Commissioner Satterfield be re-appointed to the TASS Board for another term. Commissioner Satterfield had previously finished a term that was held by Mr. Goddard. **RESOLUTION 062920-R**

Commissioner Shaver made the motion to approve the appointment and Commissioner Meers seconded the motion.

Upon Voice Vote, the motion **PASSED** unanimously.

(10) Budget
Recommendations
Funds:
101, 115, 116, 131,
141, 142, 171, 176

Director of Accounts & Budgets – Tracy Blair – requested consideration of recommendation to approve amendments in the following funds:

- | | |
|--------------------------------------|--------------------------------|
| 1) County General Fund 101 | <u>EXHIBIT 062920-E</u> |
| 2) Public Libraries Fund 115 | <u>EXHIBIT 062920-F</u> |
| 3) Recycling Centers Fund 116 | <u>EXHIBIT 062920-G</u> |
| 4) Highway Department Fund 131 | <u>EXHIBIT 062920-H</u> |
| 5) General Purpose School 141 | <u>EXHIBIT 062920-I</u> |
| 6) School Federal Projects Fund 142 | <u>EXHIBIT 062920-J</u> |
| 7) General Purpose School Fund 171 | <u>EXHIBIT 062920-K</u> |
| 8) Highway Capital Projects Fund 176 | <u>EXHIBIT 062920-O</u> |

Commissioner Shaver made the motion to approve all the recommendations presented by the Director of Accounts and Budgets (items 1-8) listed above in one motion and **Commissioner Brewster** seconded the motion.

Chairman Cullen called for a Roll Call Vote.

Upon Roll Call Vote the following commissioners voted **AYE**:

Tinker, Satterfield, Whitfield, Cullen, Duff, Shaver, Waller, Brewster, Meers, Hurley (10)

NOTE: Before giving his vote **Commissioner Tinker** gave his Conflict of Interest Statement.

The following commissioners voted **NAY**: (0)

The Motion **PASSED** (10)

(11) Monthly
Reports

Director of Accounts and Budgets - Tracy Blair requested that the record reflect that prior to the meeting the following reports were distributed:

- | | |
|--|--------------------------------|
| 1) Debt Obligation | <u>EXHIBIT 062920-P</u> |
| 2) Summary Financial Statement - June 2020 | <u>EXHIBIT 062920-Q</u> |

(12) Notaries &
Bonds

Commissioner Meers made a motion that was seconded by **Commissioner Waller** to approve the following Notaries & Bonds:

**Maria D. Almanza, Amber Nicole Bennett, Karen Clabough, Garell Foshee,
Timothy L. Grindstaff, Mindee L. Marshall, Richard A. Proffitt Sr., William Blake
Stapelton, Jessica Stepp, Teresa Michelle Wilson**

Upon VOICE VOTE, the motion **PASSED** unanimously.

(13) Adjournment
with Budget
Approval Meeting
to follow

There being no further business, a motion being duly made by **Commissioner Shaver** the June 29, 2020 County Commission was adjourned. Following a short recess, County Commission resumed with the Budget Approval Meeting.

BUDGET APPROVAL MEETING 2020

(14) Public
Comments

Chairman Cullen opened the floor for the General Public Comments. The following people spoke:

- 1) **Wayne Schnell** – delay any raises wait at least for 6 months to consider
- 2) **Pandora Vreeland** – budget raises concern

(15) Documents
Handed Out for
Budget Meeting

Director of Accounts and Budgets - Tracy Blair requested the record reflect that the following documents were handed out prior to the meeting:

- 1) Statement of Proposed Operations by Fund for Fiscal Year Ending June 30, 2021
Budget Committee Recommendation
- 2) Draft of the Resolution Fixing the Tax Levy in Loudon County, Tennessee for the Fiscal Year beginning July 1, 2020
- 3) Draft of the resolution making appropriations for the Various Funds, Departments, Institutions, Offices and Agencies of Loudon County, Tennessee for the year beginning July 1, 2020 and ending June 30, 2021
- 4) Draft of a resolution making appropriations to non-profit organizations serving Loudon County, Tennessee for the year beginning July 1, 2020 and ending June 30, 2021

(16) Tax Levy
Resolution

Director of Accounts and Budgets -Tracy Blair requested consideration of recommendation to approve a Resolution fixing the Tax Levy in Loudon County, Tennessee for the Fiscal Year Beginning, July 1, 2020. **RESOLUTION 062920-L**

(17) Amendment 1

Commissioner Whitfield made a motion to amend the budget committee's recommendation and reduce the property tax by two pennies in the county general fund and increase property tax by two pennies in the general purpose school fund. **Commission Chairman Cullen** clarified that the overall rate would stay the same. **Commissioner Tinker** seconded the motion.

Chairman Cullen called for a Roll Call vote.

Upon Roll Call vote the following commissioners voted **AYE**:

Brewster, Hurley, Tinker, Whitfield, Duff (5)

The following commissioners voted **NAY**:

Meers, Satterfield, Cullen, Shaver, Waller (5)

NOTE: Before giving his vote **Commissioner Tinker** gave his Conflict of Interest Statement.

The motion **FAILED (5/5)**

(18) Amendment 2

Commissioner Brewster made a motion to accept the budget committee's recommendation as presented to approve a resolution fixing the Tax Levy in Loudon County, Tennessee for the Fiscal Year Beginning July 1, 2020. **Commissioner Shaver** seconded the motion.

Chairman Cullen called for a Roll Call vote.

Upon Roll Call vote the following commissioners voted **AYE**:

Meers, Hurley, Tinker, Satterfield, Whitfield, Cullen, Duff, Shaver, Waller, Brewster (10)

The following commissioners voted **NAY**: (0)

NOTE: Before giving his vote **Commissioner Tinker** gave his Conflict of Interest Statement.

The motion **PASSED** unanimously.

(19)
Appropriations
Resolution for FY
2020-2021

Director of Accounts and Budgets – Tracy Blair presented to commission the budget committees recommendation for consideration to approve A Resolution Making Appropriations for the Various Funds, Departments, Institutions, Offices and Agencies of Loudon County, Tennessee for the year beginning July 1, 2020 and ending June 30, 2021.
RESOLUTION 062920-M

Commissioner Shaver made a motion to approve the resolution as recommended.
Commissioner Brewster seconded the motion.

(20) Amendment 1

Commissioner Waller made a motion to amend the resolution to remove the 2% raises due to the 9% unemployment rate with review by the budget committee and commission in December. **Commissioner Meers** seconded the motion.

Chairman Cullen called for a Roll Call vote.

Upon Roll Call vote the following commissioners voted **AYE**:

Hurley, Tinker, Satterfield, Cullen, Shaver, Waller, Meers (7)

The following commissioners voted **NAY**: **Whitfield, Duff, Brewster (3)**

The motion **PASSED (7/3)**.

(21) Amendment 2

Commissioner Brewster made a motion for an amendment to distribute \$ 200 bonus for county full-time employees (excluding elected county officials and members appointed to boards) and a \$ 75.00 bonus for part-time employees at Christmas time in the amount of less than \$ 50,000. **Commissioner Whitfield** seconded the motion. This amendment does not include teachers only county employees.

Chairman Cullen called for a Roll Call vote.

Upon Roll Call vote the following commissioners voted **AYE**:

Tinker, Whitfield, Brewster, Hurley (4)

The following commissioners voted **NAY**: **Satterfield, Cullen, Duff, Shaver, Waller, Meers (6)**

The motion **FAILS (6/4)**.

(22) Amendment 3

Commissioner Duff made a motion to amend the resolution to add back into the budget \$1500 for the Loudon County Education Foundation (Run LoCo) to restore their budget amount back to \$2500. **Commissioner Tinker** seconded the motion.

Chairman Cullen called for a Roll Call vote.

Upon Roll Call vote the following commissioners voted **AYE**: **Whitfield, Cullen, Duff, Meers, Hurley, Tinker (6)**

The following commissioners voted **NAY**: **Shaver, Waller, Brewster, Satterfield (4)**

The motion **PASSED (6/4)**.

With no further amendments being offered, **Chairman Cullen** called for a Roll Call Vote on the Amended Appropriations Resolution.

Upon Roll Call vote the following commissioners voted **AYE**: **Satterfield, Whitfield, Cullen, Shaver, Waller, Brewster, Meers, Hurley (8)**

The following commissioners voted **NAY**: **Duff, Tinker (2)**

NOTE: Before giving his vote **Commissioner Tinker** gave his Conflict of Interest Statement.

The motion **PASSED** (8/2).

(23)
Appropriations to
Non-Profit
Organization
Resolution

Director of Accounts and Budgets – Tracy Blair requested consideration of recommendation to approve A Resolution Making Appropriations to Non-Profit Organizations Serving Loudon County, Tennessee for the Year Beginning July 1, 2020 and Ending June 30, 2021.

RESOLUTION 062920-N

The only change being the Run LoCo Education Foundation \$2500

Commissioner Waller made a motion to approve the recommendation and **Commissioner Satterfield** seconded the motion.

Chairman Cullen called for a Roll Call vote.

Upon Roll Call vote the following commissioners voted AYE: **Cullen, Duff, Shaver, Waller, Brewster, Meers, Hurley, Tinker, Satterfield, Whitfield** (10)

The following commissioners voted NAY: (0)

The motion **PASSED** unanimously.

(24) AFT
(Adequate Facility
Tax)

Commissioner Shaver requested discussion regarding moving 5% of the shared AFT (Adequate Facility Tax) revenue to the Board of Education Capital Projects Fund. This was not put into a motion but only for discussion and feedback. After discussion it was decided that it needed to go the the next workshop.

(25) Annual Three
Star Fiscal
Confirmation
Letter

Mayor Bradshaw asked that commission approve the request presented at the June 15, 2020 Workshop by **Economic Development Director-Jack Qualls** regarding the Annual Three Star Fiscal Confirmation Letter. This was set to be on the August 3, 2020 Commission Meeting but is time sensitive and needs to be voted on now.

Chairman Cullen called for a Voice Vote.

Upon the Voice Vote, the request **PASSED** unanimously.

(26) Adjournment

There being no further business, a motion being duly made by **Commissioner Shaver** the June 29, 2020 Budget Approval Meeting stand adjourned at 7:30 P.M.

Loudon County Commission Chairman

ATTEST:

Loudon County Clerk

Loudon County Mayor

Loudon County Commission

Resolution

Rezoning Resolution

16250 El Camino Lane

RESOLUTION _____

A RESOLUTION AMENDING THE ZONING MAP OF LOUDON COUNTY, TENNESSEE, PURSUANT TO CHAPTER SEVEN, §13-7-105 OF THE TENNESSEE CODE ANNOTATED, TO REZONE APPROXIMATELY 17.3 ACRES FROM A-1, AGRICULTURE-FORESTRY DISTRICT TO M-1, GENERAL INDUSTRIAL DISTRICT, LOUDON COUNTY TAX MAP 006, PARCEL 021.01 LOCATED AT 16250 EL CAMINO LN., LOUDON COUNTY, TN, SITUATED IN THE 5th LEGISLATIVE DISTRICT

WHEREAS, the Loudon County Commission, in accordance with Chapter Seven, §13-7-105 of the Tennessee Code Annotated, may from time to time, amend the number, shape, boundary, area or any regulation of or within any district or districts, or any other provision of any zoning resolution, and

WHEREAS, the Regional Planning Commission has forwarded a recommendation regarding the amendment to the Zoning Map of Loudon County, Tennessee,

WHEREAS, a notice of public hearing and a description of the resolution appeared in the Loudon County newspaper, the News Herald on July 1, 2020 consistent with the provisions of Tennessee Code Annotated, §13-7-105, and

NOW, THEREFORE, BE IT RESOLVED by the Loudon County Commission that the Zoning Map of Loudon County, Tennessee be amended as follows:

Located at 16250 El Camino Ln., situated in the 5th Legislative District, referenced by Tax Map 006, Parcel 021.01 be rezoned from A-1. Agriculture-Forestry District, to M-1, General Industrial District as shown on the attached illustration; said illustration being part of this Resolution.

BE IT FINALLY RESOLVED, that this Resolution shall take effect immediately, the public welfare requiring it.

ATTEST

LOUDON COUNTY CHAIRMAN

DATE: _____

APPROVED: LOUDON COUNTY MAYOR

The votes on the question of approval of this Resolution by the Planning Commission are as follows:

APPROVED: _____ 9 _____

DISAPPROVED: _____ 0 _____

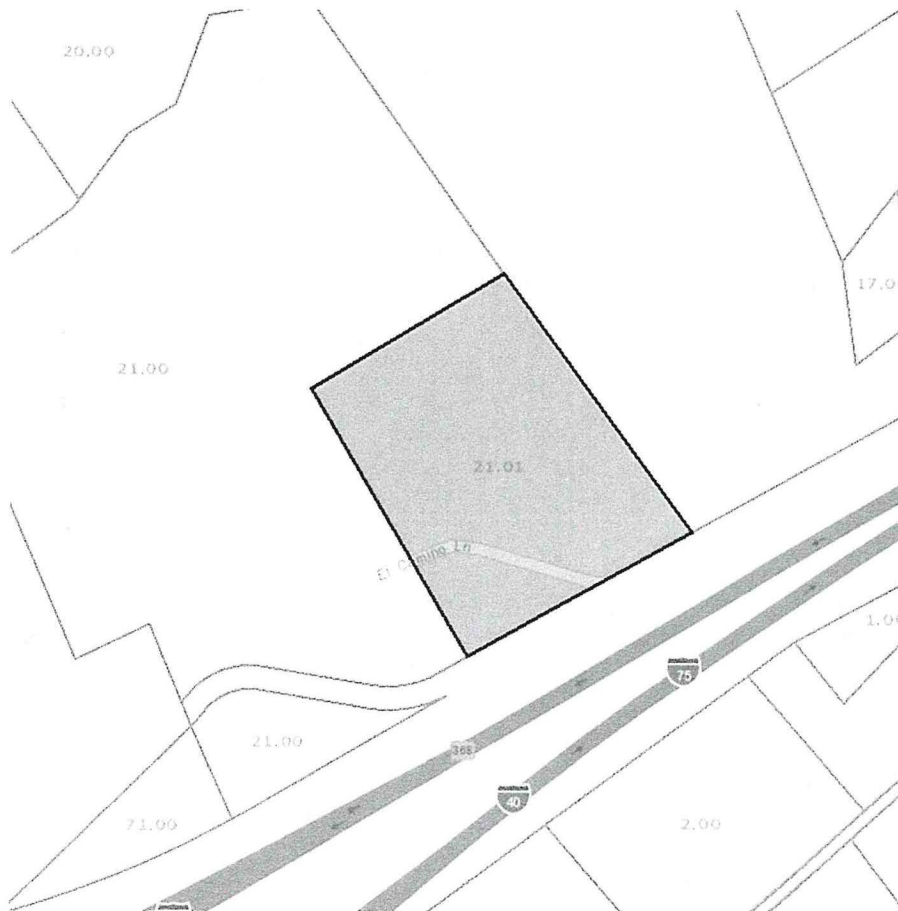


ATTEST: SECRETARY LOUDON COUNTY
REGIONAL PLANNING COMMISSION
Dated:

RESOLUTION NO. _____

ILLUSTRATION ATTACHMENT

REZONE APPROXIMATELY 12.0 ACRES FROM A-1 AGRICULTURE-FORESTRY DISTRICT TO
M-1, GENERAL INDUSTRIAL DISTRICT REFERENCED BY LOUDON COUNTY TAX MAP 006,
PARCEL 021.01 LOCATED AT 16250 EL CAMINO LN.,
LOUDON COUNTY, TN, SITUATED IN THE 5TH LEGISLATIVE DISTRICT



Loudon County Commission

Resolution

Article 5 Zoning Districts,

Section 5.043

R-1 Suburban Residential

District

RESOLUTION _____

A RESOLUTION TO AMEND THE LOUDON COUNTY ZONING RESOLUTION, ARTICLE 5 ZONING DISTRICTS, SECTION 5.043 R-1 SUBURBAN RESIDENTIAL DISTRICT, PURSUANT TO TENNESSEE CODE ANNOTATED, SECTION 13-7-105

WHEREAS, the Loudon County Commission, in accordance with Chapter Seven, §13-7-105 of the Tennessee Code Annotated, may from time to time, amend the number, shape, boundary, area or any regulation of or within any district or districts, or any other provision of any zoning resolution, and

WHEREAS, the Regional Planning Commission has forwarded a recommendation regarding the amendment to the Zoning Resolution of Loudon County, Tennessee, and

WHEREAS, a notice of public hearing and a description of the resolution appeared in the Loudon County newspaper, the News Herald on July 1, 2020 consistent with the provisions of Tennessee Code Annotated, §13-7-105, and

NOW, THEREFORE, BE IT RESOLVED by the Loudon County Commission that the Zoning Resolution of Loudon County, Tennessee be amended as follows:

Section 1. That subsection C. 9. e. in Section 5.043 R-1 Suburban Residential District shall be amended by deleting it in its entirety and replacing it with the following:

e. designed with a maximum area density of 2.5 units per acre;

Section 2. At the end of the section C. 9. In Section 5.043 R-1 Suburban Residential District add the following:

Definitions:

*Dwelling, Attached - A dwelling with one or more party walls, or one party wall in the case of a dwelling at the end of a group of attached dwellings.

*Dwelling, Multiple-Family - Two or more attached dwelling units.

Section 3. That subsection E. 4. in Section 5.043 R-1 Suburban Residential District shall be amended by deleting it in its entirety and replacing it with the following:

4. Land Area: No lot or parcel of land shall be reduced in size to provide separate lots or building sites of less than 20,000 square feet in area. Where there is an existing lot of record of less than 20,000 square feet, at the time of adoption of this Resolution, this lot may be utilized for the construction of one single-family dwelling, providing the lot in question has a public water supply and providing that said lot of record is not less than 7,500 square feet in area.

BE IT FINALLY RESOLVED, that this Resolution shall take effect immediately, the public welfare requiring it.

ATTEST

LOUDON COUNTY CHAIRMAN

DATE: _____

APPROVED: LOUDON COUNTY MAYOR

The votes on the question of approval of this Resolution by the Planning Commission on June 16, 2020 are as follows:

APPROVED: 9

DISAPPROVED: 0



ATTEST: SECRETARY LOUDON COUNTY
REGIONAL PLANNING COMMISSION

Loudon County Commission

Exhibit

*R-1 Current and Proposed
Language
Documents for Referral by
the Loudon County
Commission*

R-1 Current

C. Uses Permitted as Special Exceptions:

In the R-1, Suburban-Residential District, the following uses and their accessory uses may be permitted as special exceptions after review and approval in accordance with Article 7, Section 7.060.

1. Churches and other places of assembly.
2. Educational institutions.
3. Public and private recreation facilities.
4. Utility facilities necessary for the provision of public services. (Telecommunications towers and antennas are specifically excluded.)
5. Planned unit developments as regulated in Article 4, Section 4.080.
6. Mobile home parks, subject to the provisions of Article 4, Section 4.100.
7. Cemeteries subject to the provisions of Article 5, Section 4.120.
8. Government buildings and community centers.
9. Multi-family dwellings. In order to provide for the orderly development of multi-family housing in areas conducive to such development the following specifications and guidelines shall be followed in granting a special exception:

Multi-family dwellings shall be:

- a. located adjacent to arterials and/or collector roads;
- b. served by public utility water and an approved wastewater treatment facility (i.e., septic system or public wastewater system);
- c. located near areas of intense urban activity and necessary community facilities;
- d. designed to provide permanent open and recreational space for residents;
- e. designed to meet the area requirements as stated in Subsection 4, Land Area;
- f. located in areas where the use will not conflict with the character of the surrounding area.

Approval of an apartment complex consists of a two stage process, a preliminary approval for a site selection and a final approval consisting of a site design. A site plan shall be submitted with the following information:

- a. The site location of the proposed use/structure including a location map and the scale of such a map.
 - b. Drainage system plan to include but not limited to the location of enclosed storm sewers and appurtenances, open channels, and swales on property lines and/or back lot lines, and contour lines at five (5) foot intervals.
 - c. Size and dimensions of the proposed building(s) and a drawing of all setbacks.
 - d. Parking area design, number of parking spaces, and design of those spaces.
 - e. Location of any signage and the dimensions of such sign(s) which will advertise the use of the buildings.
 - f. Location and design of all entrances and exits onto a public road.
10. Daycare Centers – To serve up to 12 clients with no more than two (2) employees. *(Approved by County Commission 10/6/03)*

D. Uses Prohibited:

In the R-1, Suburban-Residential District, all uses except those uses specifically permitted or permitted upon approval as a special exception by the Board are prohibited.

E. Dimensional Regulations:

All uses permitted in the R-1, Suburban-Residential District, shall comply with the following requirements except as provided in Article 6:

1. Front Yard: The minimum of the front yard shall be thirty (30) feet.

2. Rear Yard: The minimum depth of the rear yard shall be twenty-five (25) feet for the principal structure and five (5) feet for any permitted accessory structure. . (Amended by Loudon County Commission 12/3/07)
3. Side Yard: The side yard shall be a minimum of fifteen (15) feet for one and two-story structures, plus five (5) additional feet of side yard for each additional story over two, and five (5) feet for any permitted accessory structure. (Amended by Loudon County Commission 12/3/07)
4. Land Area: No lot or parcel of land shall be reduced in size to provide separate lots or building sites of less than 20,000 square feet in area. Where there is an existing lot of record of less than 20,000 square feet, at the time of adoption of this Resolution, this lot may be utilized for the construction of one single-family dwelling, providing the lot in question has a public water supply and providing that said lot of record is not less than 7,500 square feet in area.

On lots or parcels of land where multiple-family dwellings are constructed, the following area requirements and definitions shall apply except as regulated in Article 4, Section 4.080, (planned unit developments):

Number of Dwelling Units	With Public Water and Sanitary Sewers	With Public Water but without Public Wastewater
1	20,000 sq. ft.	20,000 sq. ft.
2	25,000 sq. ft.	30,000 sq. ft.
3	30,000 sq. ft.	35,000 sq. ft.
4	35,000 sq. ft.	40,000 sq. ft.

More than 4 units	3,500 sq. ft. for each unit over 4	Not permitted unless on-site treatment units (i.e., package plants) are used, 30,000 sq. ft. for each unit over 4
-------------------	------------------------------------	---

Dwelling, Attached - A dwelling with one or more party walls, or one party wall in the case of a dwelling at the end of a group of attached dwellings.

Dwelling, Multiple-Family - Two or more attached dwelling units.

*The Board of Zoning Appeals may increase the lot size requirement if a soils analysis or percolation tests as required by the Loudon County Sanitarian indicate a potential problem with subsurface sewage disposal.

R-1 Proposed

C. Uses Permitted as Special Exceptions:

In the R-1, Suburban-Residential District, the following uses and their accessory uses may be permitted as special exceptions after review and approval in accordance with Article 7, Section 7.060.

1. Churches and other places of assembly.
2. Educational institutions.
3. Public and private recreation facilities.
4. Utility facilities necessary for the provision of public services. (Telecommunications towers and antennas are specifically excluded.)
5. Planned unit developments as regulated in Article 4, Section 4.080.
6. Mobile home parks, subject to the provisions of Article 4, Section 4.100.
7. Cemeteries subject to the provisions of Article 5, Section 4.120.
8. Government buildings and community centers.
9. Multi-family dwellings. In order to provide for the orderly development of multi-family housing in areas conducive to such development the following specifications and guidelines shall be followed in granting a special exception:

Multi-family dwellings shall be:

- a. located adjacent to arterials and/or collector roads;
- b. served by public utility water and an approved wastewater treatment facility (i.e., septic system or public wastewater system);
- c. located near areas of intense urban activity and necessary community facilities;
- d. designed to provide permanent open and recreational space for residents;
- e. designed with a maximum area density of 2.5 units per acre; (Section Amended.)
- f. located in areas where the use will not conflict with the character of the surrounding area.

Approval of an apartment complex consists of a two stage process, a preliminary approval for a site selection and a final approval consisting of a site design. A site plan shall be submitted with the following information:

- a. The site location of the proposed use/structure including a location map and the scale of such a map.
- b. Drainage system plan to include but not limited to the location of enclosed storm sewers and appurtenances, open channels, and swales on property lines and/or back lot lines, and contour lines at five (5) foot intervals.
- c. Size and dimensions of the proposed building(s) and a drawing of all setbacks.
- d. Parking area design, number of parking spaces, and design of those spaces.
- e. Location of any signage and the dimensions of such sign(s) which will advertise the use of the buildings.
- f. Location and design of all entrances and exits onto a public road.

Definitions: (Moved from deleted section)

*Dwelling, Attached - A dwelling with one or more party walls, or one party wall in the case of a dwelling at the end of a group of attached dwellings.

*Dwelling, Multiple-Family - Two or more attached dwelling units.

10. Daycare Centers – To serve up to 12 clients with no more than two (2) employees. *(Approved by County Commission 10/6/03)*

D. Uses Prohibited:

In the R-1, Suburban-Residential District, all uses except those uses specifically permitted or permitted upon approval as a special exception by the Board are prohibited.

E. Dimensional Regulations:

All uses permitted in the R-1, Suburban-Residential District, shall comply with the following requirements except as provided in Article 6:

1. Front Yard: The minimum of the front yard shall be thirty (30) feet.
2. Rear Yard: The minimum depth of the rear yard shall be twenty-five (25) feet for the principal structure and five (5) feet for any permitted accessory structure. . (Amended by Loudon County Commission 12/3/07)
3. Side Yard: The side yard shall be a minimum of fifteen (15) feet for one and two-story structures, plus five (5) additional feet of side yard for each additional story over two, and five (5) feet for any permitted accessory structure. (Amended by Loudon County Commission 12/3/07)
4. Land Area: No lot or parcel of land shall be reduced in size to provide separate lots or building sites of less than 20,000 square feet in area. Where there is an existing lot of record of less than 20,000 square feet, at the time of adoption of this Resolution, this lot may be utilized for the construction of one single-family dwelling, providing the lot in question has a public water supply and providing that said lot of record is not less than 7,500 square feet in area.

Section Deleted.

F. Cluster Development Option

Purpose: The cluster development option is established to encourage clustering of residential development promoting more creative design options based on the size, shape, natural resources of a site; constraints which have direct implications for development. The primary purpose of the option is to maintain open space, preservation of natural environmental features and enhance design which may not be practical under traditional development standards. This option shall not apply within the 1st and 4th civil districts up to the Tennessee River and Little Tennessee River which are primarily rural in character.

Objectives:

- * Maintain the same density standards of the district
- * Promote connection to public sewage systems to reduce environmental impacts
- * Reduce construction and maintenance costs (public and private)
- * Enhance opportunities for creative design

Loudon County Commission

Exhibit

***Procurement for a Multi-Year
Voice (Phone Service)
Contract for Schools***

Opt-In Agreement to Metro Nashville Public Schools Contract 2-225071-08

ENA Voice Services

This Opt-In Agreement for ENA Voice Services is entered into by Loudon County Public Schools ("Client") as of July 9, 2020 ("Effective Date") in conjunction with Metro Nashville Public Schools Contract 2-225071-08 ("MSA") between Education Networks of America, Inc. ("Contractor" or "ENA") and The Metropolitan Government of Nashville and Davidson County by and through The Metropolitan Board of Public Education.

Client agrees that the following terms of service ("Terms of Service") shall govern Client and its Users use of ENA voice services (the "Services"). In these Terms of Service, "User" shall mean any individual or legal entity that uses or accesses the Services directly or indirectly from Client. These Terms of Service supplement the terms of the MSA, in the event of a conflict between these Terms of Service and the MSA, these Terms of Service shall control.

Services are provided by ENA Services, LLC or one or more ENA affiliates or underlying service providers. Any data supplied by Client such as data necessary for conversions from other carriers and/or Letter(s) of Authorization and Agency ("LOA") may be used by any of these Parties for purposes of delivering the Services contracted herein.

1. Pricing. Pricing is indicated in the relevant Schedule(s) attached to this Opt-In Agreement.

While most of the charges associated with ENA's service are included in the available product configurations at a flat rate, certain services have a per usage charge or may be restricted/blocked as indicated below and in more complete detail in ENA's published price lists.

- 900/976 numbers – Client acknowledges by signing this agreement that ENA has informed Client that the Services do not permit calls to 900/976 numbers or other pay-per-call services.
- Directory Assistance – Client acknowledges that ENA have informed Client that calls to Directory Assistance (411, 1-XXX-555-1212 or similar) will incur a per usage charge of \$1.00 per call or as otherwise indicated in ENA's tariffs, as updated. Client may request that this feature be blocked.
- International calls – Client acknowledges that ENA has informed Client that international calls and calls outside the continental United States are not included in the Services and will incur a per call charge based on ENA's then applicable per country rates. This feature is blocked by default. Client may request that this feature be enabled on a per extension basis.
- Operator-Assisted calls – Client acknowledges that ENA have informed Client that Operator-Assisted calls, such as Operator-Assisted Person-to-Person calls, Operator-Assisted Collect calls, Third Party Billed Calls, and Operator-Assisted Dialing, are not supported on ENA's Voice services.

2. Invoicing. Client's first invoice from ENA may include a partial month of Service. Client's first invoice may contain charges for only a portion of the Services requested. It may take up to three (3) billing cycles until charges for all Services requested appear on the invoice, as is industry standard. After the initial billing cycles, Client's invoice will include charges for one month of Service for all requested Services, including any usage charges. Client should receive a final invoice from its existing local, long distance, and/or data service provider(s) that ENA is replacing and Client will be responsible for paying any charges resulting from the early termination of a service contract with existing provider(s), if applicable.

3. Transition from Prior Service Provider. ENA will handle communication with Client's existing provider(s) regarding the porting of some or all of your existing numbers, to ENA, based on the scope of services ENA is to deliver; however, Client is responsible for requesting existing services be disconnected from your current provider once live service has been migrated to ENA. ENA can provide sample disconnect language, upon request.

4. Disconnection. Upon disconnection of Service, ENA may, in its sole and absolute discretion, release to Client's new service provider the telephone number that Client ported (transferred or moved over) to ENA from Client's previous service provider and used in connection with Client's Service if:

- a) Such new service provider is able to accept such number;
- b) Client's account has been properly disconnected;
- c) Client's account is completely current, including payment for all charges and any applicable disconnection fees; and
- d) Client requests the transfer upon disconnecting Client's account.

5. Voice Recording. ENA may provide Client with the ability to record voice calls placed via the Services. Client is solely responsible for notifying those using the Services that the calls may be recorded, and will comply with all applicable laws and regulations regarding (i) such notification and (ii) the recording of any voice conversations. To the extent permitted by Tennessee law, Client will indemnify, defend, and hold harmless ENA for any claims, damages, liabilities or costs (including reasonable attorneys' fees) arising from a claim resulting from the recording by Client of any voice conversations on the Services.

6. 9-1-1 Dialing Feature; Compliance with 47 CFR § 9.5 et. seq. Included in the Services provided to Client by ENA is a 9-1-1 Dialing Feature that has certain limitations as compared to a traditional telephonic 9-1-1 dialing. A copy of the specifications of the 9-1-1 Dialing Feature is described herein. Client acknowledges that the Client has certain obligations in connection with the provision of the 9-1-1 Dialing Feature pursuant to 47 C.F.R. §§ 9.5(d) and (e). Client acknowledges and agrees that it is Client's responsibility and obligation, prior to initiating any of the Services, to comply with the following:

- a) **Registered Location.** Client is required to provide to ENA, prior to initiation of the service, the physical location at which the service will be utilized ("Registered Location").

Client is required to notify ENA via phone (1-888-612-2880) or email (support@ena.com) if Client needs to update one or more Registered Locations.

- b) **Notification to End Users.** Client is required to provide a copy of the 9-1-1 Dialing Feature specifications, provided by ENA in the form of labels to be adhered to phones, to each end user of the service and to post a copy of the 9-1-1 Dialing Feature specifications included described herein.

Client agrees that, upon request by ENA, Client shall permit ENA to review the notice being provided by Client to its end users. If Client fails to provide the necessary records or refuses to produce such records, ENA may immediately disable Service until such records are provided. Client hereby forever releases and forgives ENA from any and all liability, losses or damages which may arise from ENA's disabling or disconnection of any of Client's Services due to the failure of Client to provide the necessary proof of compliance to the 9-1-1 Dialing Feature requirements detailed herein. ENA reserves the right to terminate Schedule(s) attached to the MSA related to this 9-1-1 Dialing Feature for a breach by Client of the obligations in this section, in addition to any other remedies ENA may have in law or equity.

- c) **Acknowledgement of 9-1-1 Dialing Feature.** By signing this Addendum, Client acknowledges that it understands the 9-1-1 Dialing Feature provided as part of the Services.

General Indemnification. In the event that the Federal Communications Commission ("FCC") conducts an audit or inquiry of ENA's compliance with 47 C.F.R. §§ 9.5(d) and (e), Client agrees to cooperate fully with ENA and the FCC and produce all records requested by either ENA or the FCC. Should ENA be found in violation of any provision of the 47 C.F.R §§ 9.5(d) or (e) based upon the Client's breach of any of its obligations under this section, Client agrees, to the extent permitted by Tennessee law, to indemnify and hold ENA harmless for any and all monetary penalties assessed by the FCC on ENA as a result of Client's failure to comply with this Section.

IN THE EVENT CLIENT DOES NOT UTILIZE ENA'S AVAILABLE 9-1-1 DIALING FEATURE, CLIENT HEREBY REPRESENTS AND WARRANTS THAT IT DOES NOT RELY ON ENA IN ANYWAY TO PROVIDE 911, E911 OR ANY OTHER EMERGENCY SERVICES (COLLECTIVELY "911"). CLIENT REPRESENTS AND WARRANTS THAT IT ASSUMES ALL LIABILITY ASSOCIATED TO 911 OR ANY OTHER EMERGENCY SERVICES ASSOCIATED DIRECTLY OR INDIRECTLY WITH A TELEPHONE NUMBER ISSUED BY ENA PURSUANT TO THIS MSA.

IMPORTANT NOTIFICATION IN CONNECTION WITH 9-1-1 DIALING SERVICES USING ENA VOICE SERVICES

ENA provides Client (hereinafter referred to as "you") with local, regional and long distance phone services. There is one important difference between the ENA service and the phone service provided over a traditional phone service -- namely that the 9-1-1 dialing feature with ENA has important differences and limitations that you should be aware of and that you should advise others that may use the ENA voice service at all of your locations.

ENA recommends that you always have an alternative means of accessing emergency services.

YOU ARE RESPONSIBLE FOR ACTIVATING THE 9-1-1 DIALING FEATURE BY TAKING AFFIRMATIVE STEPS WITH ENA TO REGISTER THE ADDRESS WHERE YOU WILL USE THE SERVICE. This is accomplished by registering the address where the phone/handset will be used.

IF YOU MOVE THE LOCATION OF WHERE YOU USE THE ENA SERVICE, YOU MUST AFFIRMATIVELY ACTIVATE THE 9-1-1 DIALING FEATURE AT THAT LOCATION BY REGISTERING THE ADDRESS. IF YOU FAIL TO REGISTER YOUR LOCATION OR CHANGE THE ADDRESS TO A NEW LOCATION, THE 9-1-1 DIALING FEATURE WILL NOT FUNCTION PROPERLY AND POTENTIALLY NO EMERGENCY SERVICE WILL BE SENT TO YOUR LOCATION. ADDITIONALLY, IF 9-1-1 IS DIALED AT AN UNREGISTERED ADDRESS, YOU MAY BE ASSESSED A FEE OF \$75.00.

Specifically, if you move a phone to another physical address, such as to a different building, you must reregister that phone's location to receive accurate 9-1-1 service. The phone and its phone number are portable and ENA must know where they are physically located to properly provide 9-1-1 service. You may move a phone within a building without notifying ENA, but moving a phone to another location requires notifying ENA to make the appropriate 9-1-1 address adjustments for that phone and its phone number.

ENA is available to assist its customers to make sure that 9-1-1 remains accurate and available and customers should contact ENA with any questions about moves, adds, or changes related to phone equipment and phone numbers.

When placing a 9-1-1 emergency call, always state the phone number and location that you are calling from because the phone number that is transmitted to the 9-1-1 operator may be the main number for your service location (especially for ENA SmartVoice Prime service) and if your 9-1-1 call is disconnected, the 9-1-1 operator will call that main number back, which may not ring to the specific telephone you are calling from. Additionally, the address that is transmitted to the 9-1-1 operator is the main address for your service location; therefore, you should tell the operator your specific location (for example – the classroom number and floor) within the main address so emergency personnel can more easily locate you.

Additional limitations are as follows:

- If you lose power or there is a disruption to power at the location where the ENA voice service is used, neither the ENA voice service nor the 9-1-1 dial feature will function until power is restored. You should also be aware that after a power failure or disruption, you may need to reset or reconfigure the end user

phone device prior to utilizing the service, including the 9-1-1 dialing feature. ENA and your local phone service coordinator can assist if needed.

- If the ENA provided router and/or gateway has been damaged or otherwise impacted by unauthorized personnel including configuration changes, 9-1-1 service could be impacted or unavailable. ENA recommends that central router and gateway equipment be maintained in an appropriate secure location at the service location.
- You cannot use the ENA provided 9-1-1 service with equipment other than ENA-approved equipment
- If your ENA connection is lost, suspended, terminated or disrupted, neither ENA's voice service nor the 9-1-1 dial feature will function until the ENA connection is restored.
- If your ENA voice account is suspended or terminated, the ENA voice service outage will prevent the 9-1-1 dialing feature from functioning.
- There may be a greater possibility of network congestion and/or reduced speed in the routing of a 9-1-1 dialed calls utilizing ENA voice service as compared to traditional 9-1-1 dialing over traditional public telephone networks.

Labels will be provided upon written request that must be placed on or near all equipment that is used to make calls using the ENA voice service so that you or others using the equipment are reminded or advised of the limitations of the 9-1-1 dialing feature.

You are responsible for the accuracy and the completeness of the address that you submit to ENA for the location at which ENA voice services including phone handsets and phone numbers will be used and to which emergency service will be sent in the event that you use the ENA 9-1-1 dialing service. You are responsible for updating and advising ENA of any and all changes to the address or location at which ENA connected phone handsets and phone numbers will be used. ENA uses third parties to route the 9-1-1 dialed calls to the applicable local emergency response center or to the national emergency calling centers. ENA makes no warranties or guarantees as to whether, or the manner in which, 9-1-1 dialed calls that you make are answered or responded to by the local emergency response center or by the national emergency calling centers. ENA disclaims any and all liability or responsibility in the event that the third party data used to route 9-1-1 dialed calls is incorrect or yields an erroneous result. Neither ENA, its officers, directors, stockholders, parent corporation, its affiliated or subsidiary corporations, employees, representatives or agents may be held liable for any claim, damage or loss, and you hereby waive any and all such claims or causes of action, arising from or relating to ENA 9-1-1 dialing service unless such claims or causes of action arise from ENA's gross negligence, recklessness or willful misconduct. To the extent permitted by Tennessee Law, you agree to release, indemnify, defend and hold harmless ENA, its officers, directors, stockholders, parent corporation, its affiliated or subsidiary corporations, employees, representatives or agents and any other service provider who furnishes services to you from any and all claims, damages, losses, suits or actions, fines, penalties, cost and expenses (including, but not limited to, attorney fees) or any liability whatsoever, whether suffered, made, instituted or asserted by you or by any other party or person, for any personal injury to or death of any person or persons, or for any loss, damage or destruction of any property, whether owned by you or others, or for any infringement or invasion or the right of privacy of any person or persons, caused or claimed to have been caused, directly or indirectly, by the operation, failure or outage of services, incorrect routing, or use of, or inability of a person to use, ENA 9-1-1 dialing feature or service or access emergency service personnel.

If you have any questions about this notification, please call ENA at 1-866-615-1101 for further information.

IN WITNESS WHEREOF the parties have executed this Agreement as of the date first written above.

ENA:

CLIENT:

ENA Services LLC

Loudon County Public Schools

By: _____
Name: _____
Title: _____
Date: _____

By: _____
Name: _____
Title: _____
Date: _____

SCHEDULE OF SERVICES TO OPT-IN AGREEMENT

No. _____

In accordance with all terms and conditions of the Opt-In Agreement executed between ENA and Loudon County Public Schools ("Client") on _____ (Date) (the "Agreement"), Client desires to purchase some or all of the Services described in this Schedule of Services (the "Schedule"). Client's Purchases of Services from this Schedule will be memorialized in a form agreeable to both Parties during the Term of this Schedule.

Service Ordered (Check All Applicable Below)			
<input type="checkbox"/>	Broadband	<input type="checkbox"/>	Wi-Fi/LAN
<input checked="" type="checkbox"/>	Communication	<input type="checkbox"/>	Cloud
<input type="checkbox"/>	Other	<input type="checkbox"/>	
Description and Price of Services			
Check one: <input type="checkbox"/> Described below <input checked="" type="checkbox"/> Described in the attached document(s)			
Described in the attached cost proposal for Voice services based on Tennessee E-Rate Consortium, 470 # 160017344, MNPS RFP 16-11, Contract Number: 2-225071-08.			
Term (construed in conjunction with any documents attached to this Schedule)			
Initial Term	<input type="text" value="36"/>	months	
Renewal Term(s)	<input type="text" value="0"/>	Number of Renewal Terms <i>enter '0' if none permitted</i>	<input type="text" value="0"/> Length of each Renewal Term (in months)
Maximum Contract Length (if all renewal terms exercised)			<input type="text" value="36"/> Months
Schedule of Service Term Start Date (at install unless specified herein)	<input type="text"/>		
Billing Address and Billing Contact Information			
Loudon County Public Schools Attn: Accounts Payable Department 100 River Road Loudon, TN 37774			

(begin modifications)

In entering into this Schedule, the Parties hereby modify the terms and conditions of the Agreement as follows solely related to Service(s) delivered under this Schedule:

(add) 6.3 Subject to Available Funding. This Schedule shall terminate immediately and absolutely if Client is determined to no longer have funds available to pay for the Services described herein, either through ENA or any other vendor. Termination through this provision is final, Client may not purchase substitute Services from any other vendor upon termination for lack of funds for the unexpired term of this Agreement prior to the termination for lack of funding and

SCHEDULE OF SERVICES TO OPT-IN AGREEMENT

Client shall not be liable for any additional charges or fees pursuant to Section 6.2 to ENA beyond the charges incurred for Service up to the date of the termination.

(end modifications)

Other than the modifications indicated above, nothing in this Schedule is intended to replace, supersede or modify the terms of the Agreement. Client facility must be ready to support the Service. Any building or customer environment make-ready cost is the responsibility of the Customer. If this Service includes a data circuit, Client must have a suitable entrance facility into the building/demark room by conduit or aerial means.

ENA:

By: _____
Name: _____
Title: _____
Date: _____

CLIENT: Loudon County Public Schools

By: scott j. gann
Name: Michael Gann
Title: Director of Schools
Date: _____



Voice Services Quote

Service Attachment 1

Date Prepared: Friday, May 15, 2020
Organization: Loudon

Form Number: 1
Organization Type: Education

Installation Site
Site Name: Loudon County LEA
Site Address: 100 River Rd
Loudon, TN 37774
Contact:

Ship To Site
Site Name: Loudon County LEA
Site Address: 100 River Rd
Loudon, TN 37774
ATTN:

Term of Service Requested: Three (3) Years

Description	Total		
	One-time	Monthly	
ENA SmartLink Services - Includes 1,000 minutes of local and domestic LD ³ usage per channel or port per month			
Additional Telephone Numbers ²	\$0.25	30	\$7.50
ENA SmartFax Services - Includes unlimited local and domestic LD ³ and either a new ENA-assigned fax number or LNP of your existing fax number			
ENA SmartFax ^{4,5} (includes one optional ENA SmartFax-to-Email account and installation of an ENA-provided ATA - One email address per fax number)	\$25.00	5	\$125.00
ENA SmartVoice Services - All ENA SmartVoice services include LNP and on-line management interfaces, both Administrator's and individual User Portals			
Interconnected VoIP Extension Types			
Essential with ENA SmartVoice Go App, Mobile-ONLY Enhancement (includes unlimited minutes)	\$11.50	444	\$5,106.00
Enhanced (includes unlimited minutes)	\$17.00	39	\$663.00
Executive (includes unlimited minutes)	\$19.00	63	\$1,197.00
Auto Attendant	\$17.00	12	\$204.00
Add-on Services			
Voice Mail Only	\$4.00	7	\$28.00
Configuration and Engineering Consulting			
Integration with Customer firewall (ICB based on Customer's network)	ICB		\$0.00
LAN/WAN/PBX integration with Customer premises systems (hourly rate)	\$175.00		\$0.00
Extend Service Demarcation Point (hourly rate)	\$175.00		\$0.00
Basic Extension Configuration or Change (available via Administrator's portal)	\$10.00		\$0.00
Virtual Extension Configuration (* NOT * available via Administrator's portal)	Included		\$0.00
911 Configuration and changes	Included		\$0.00
Analog Telephone Connection ⁷ (includes on-site installation)	\$5.00	2	\$10.00
ENA SmartVoice Call Handling Services			
Multi Line Hunt Group	\$20.00	8	\$160.00
ENA SmartVoice Notification Services			
Notification Controllers			
Analog Integration Extension - for Customer-provided Intercom/Paging/Door Locks ⁵ may require adapter purchase	\$15.00	9	\$135.00

Subtotal Quoted Services	\$0.00	\$7,635.50
Subtotal Quoted Equipment	\$0.00	
Estimated 911/E-911 Local Government Fees - based on location ¹	location rate: \$1.16	\$165.88
Estimated USF and Government Fees - based on monthly voice service ¹	6.00%	\$458.13
Total Ground-service Shipping Charges ⁸	\$0.00	
Total Quoted	\$0.00	\$8,259.51

¹ All fees, surcharges, taxes, 411 (Directory Assisted) Calls, International and non-Continental US LD calls are billed in addition to the flat monthly rate. Additional required taxes, if applicable, will be charged according to the province or territory to which the service is delivered. See Master Service Agreement for the per-call and per-minute charges that are not included.

² Availability of additional telephone numbers vary per LATA. Please see your ENA Account Manager for more details. Additional numbers are available with ENA SmartLink service.

³ By default, service comes with International LD and 900/976 Calls disabled. International LD can be re-enabled upon customer request. 411 Calls can be disabled upon customer request.

⁴ May not be available in all markets

⁵ Customer must provide the end device; i.e. fax machine, paging adapter, analog handset, headset, etc. ENA does not provide, sell, install nor service these devices unless the paging adapter is an ENA Algo SIP device

⁶ The Basic Site Assessment will include an essential review of each site's network infrastructure including the network switching environment, Ethernet switch configurations and requirements to enable 802.1Q, P802.1p and 802.1af (VLAN, QoS and PoE) capabilities. ENA Field Services may also perform basic tests on the fiber and copper uplinks between the MDF and each of the IDF's and may place a test VoIP call from each LAN segment. ENA SmartVoice service requires the customer's LAN environment to meet certain specifications. All service delivery prices are based on expected site readiness to receive the services. In the event that Basic Site Assessments determine a need for site make-ready work, service may not be available until such work is completed by customer.

⁷ Enhanced PinPoint 911 requires that each extension across the entire site participate and have its own telephone number. Customer must provide and actively maintain the PinPoint E911 database information.

⁸ ENA end user devices are shipped directly to the customer requested location. A line item for shipping charges is included in the pricing proposal.

⁹ ENA end user device models are subject to change. ENA may replace certain phone models over the course of the contract, as needed, based on availability and technology changes. ENA will work with each customer to discuss available phone models at time of any phone order.

¹⁰ Handset installation includes unboxing phones, putting phones together, assigning extension to phone, placing phone on desk, connecting to the network (patch cable), and removing empty boxes. Handset installation does not include cabling. Customer is responsible for having the cable run to the location where you want phone placed. Network jack needs to be easily accessible.

¹¹ Notification device installation includes unboxing devices, putting devices together (if applicable), configuring device, mounting device on wall, connecting to the network (patch cable), and removing empty boxes. Device installation does not include cabling. Customer is responsible for having the cable run to the location where they want device mounted. Network jack needs to be easily accessible.

* The pricing above is the gross monthly price for service. Any changes will be approved by the customer's designated personnel before implementation.

* There are no traditional "line" restrictions imposed other than the physical limits of your hardware. All voice calls will have access to your entire Internet bandwidth, not just a segregated voice-only channel.

Loudon County Commission

Exhibit

Budget Recommendation

General Purpose School

Fund 141

Loudon County Board of Education
Fund 141
Fiscal Year Ending June 30, 2021

BUDGET AMENDMENTS						
General Fund 141						
7/19/2020 19:18						
Account Number		2020-2021	2020-2021	Approved	Proposed	Proposed
		Original Budget	Amendments	Amended Budget	Amendments	Amended Budget
General Purpose School Revenue						
40000	Local Taxes					
40100	<u>County Property Taxes</u>					
40110	Current Property Tax	9,727,686	0	9,727,686	0	9,727,686
40120	Trustee's Collections Prior Year	187,000	0	187,000	0	187,000
	Total County Property Taxes	9,914,686	0	9,914,686	0	9,914,686
40125	Bankruptcy	20,000	0	20,000	0	20,000
		20,000	0	20,000	0	20,000
40100	<u>County Property Taxes</u>					
40130	Clerk and Master's Collections Prior Year	190,000	0	190,000	0	190,000
40140	Interest and Penalty	44,000	0	44,000	0	44,000
40163-TATE	Payments in-Lieu of Taxes - Tate & Lyle	324,645	0	324,645	0	324,645
	Total County Property Taxes	558,645	0	558,645	0	558,645
40200	<u>County Local Option Taxes</u>					
40210	Local Option Sales Tax	4,000,000	0	4,000,000	0	4,000,000
40275	Mixed Drink Tax	25,000	0	25,000	0	25,000
	Total County Local Option Taxes	4,025,000	0	4,025,000	0	4,025,000
40300	<u>Statutory Local Taxes</u>					
40320	Bank Excise Tax	20,000	0	20,000	0	20,000
40350	Interstate Telecommunications Tax	2,900	0	2,900	0	2,900
	Total Statutory Local Taxes	22,900	0	22,900	0	22,900
Total Local Taxes		14,541,231	0	14,541,231	0	14,541,231
41000	Licenses and Permits					
41100	<u>Licenses</u>					
41110	Marriage Licenses	1,200	0	1,200	0	1,200
41140	Cable TV Franchises	0	0	0	0	0
	Total Licenses	1,200	0	1,200	0	1,200
Total Licenses and Permits		1,200	0	1,200	0	1,200

Loudon County Board of Education
Fund 141
Fiscal Year Ending June 30, 2021

Account Number	General Fund 141 7/19/2020 19:18	2020-2021	2020-2021	Approved	Proposed	Proposed		
		Original Budget	Amendments	Amended Budget	Amendments	Amended Budget		
43000	Charges for Current Services							
43500	<u>Education Charges</u>							
43542	Contract for Instructional Services with Other LEA's	0	0	0	0	0		
43570	Receipts from Individual Schools	15,000	0	15,000	0	15,000		
43581	Community Service Fees-Children	0	0	0	0	0		
43583	TBI Criminal Background Fee	0	0	0	0	0		
	Total Education Charges	15,000	0	15,000	0	15,000		
Total Charges for Current Services		15,000	0	15,000	0	15,000		
44000	Other Local Revenues							
44100	<u>Recurring Items</u>							
44110	Investment Income	30,000	0	30,000	0	30,000		
44130	Sale of Material and Supplies	0	0	0	0	0		
44145	Sale of Recycled Materials	0	0	0	0	0		
44146	E-Rate Funding	0	0	0	0	0		
44160-RET-DEN	Retirees' Insurance Payments	50,000	0	50,000	0	50,000		
44160-RET-LIF	Retirees' Insurance Payments	7,300	0	7,300	0	7,300		
44160-RET-VIS	Retirees' Insurance Payments	5,100	0	5,100	0	5,100		
44161-COBRA-DEN	Cobra Insurance Payments	0	0	0	0	0		
44170	Miscellaneous Refunds	2,000	0	2,000	0	2,000		
44170-ATT	Miscellaneous Refunds	0	0	0	0	0		
44170-TNRMT	Miscellaneous Refunds - TN Risk Management	0	0	0	0	0		
	Total Recurring Items	94,400	0	94,400	0	94,400		
44500	<u>Nonrecurring Items</u>							
44530-GOVDL	Sale of Equipment	0	0	0	0	0		
44570-CSH	Contributions and Gifts	0	0	0	0	0		
	Total Nonrecurring Items	0	0	0	0	0		

Loudon County Board of Education
Fund 141
Fiscal Year Ending June 30, 2021

General Fund 141 7/19/2020 19:18		2020-2021	2020-2021	Approved	Proposed	Proposed	
Account Number		Original Budget	Amendments	Amended Budget	Amendments	Amended Budget	
Total Other Local Revenues		94,400	0	94,400	0	94,400	
46000	State of Tennessee						
46500	<u>State Education Funds</u>						
46511	Basic Education Program	21,937,000	0	21,937,000	(245,000)	21,692,000	LCBOE: Updated BEP funding.
46515	Early Childhood Education	734,715	0	734,715	0	734,715	
46520	School Food Service	0	0	0	0	0	
46550	Driver Education	0	0	0	0	0	
46590	Other State Education Funds	58,467	0	58,467	0	58,467	
46590-FRC	Family Resource Center	0	0	0	0	0	
46590-LEAP	LEAPS Grant	309,625	0	309,625	0	309,625	
46591	Coordinated School Health	160,000	0	160,000	0	160,000	
46592	Internet Connectivity	0	0	0	0	0	
46594	Family Resource Center	30,211	0	30,211	0	30,211	
46610	Career Ladder Program	88,600	0	88,600	0	88,600	
46640	Vocational Equipment	0	0	0	0	0	
	Total State Education Funds	23,318,618	0	23,318,618	(245,000)	23,073,618	
46800	<u>Other State Revenues</u>						
46840	Alcoholic Beverage Tax	0	0	0	0	0	
46851	State Revenue Sharing-T.V.A.	1,150,000	0	1,150,000	0	1,150,000	
	Total Other State Revenues	1,150,000	0	1,150,000	0	1,150,000	
Total State of Tennessee		24,468,618	0	24,468,618	(245,000)	24,223,618	
46980-READ	Other State Grants	0	0	0	0	0	
46981	Safe Schools	0	0	0	0	0	
46990	Other State Revenue	0	0	0	0	0	
	Total	0	0	0	0	0	

Loudon County Board of Education
Fund 141
Fiscal Year Ending June 30, 2021

Account Number	General Fund 141 7/19/2020 19:18	2020-2021	2020-2021	Approved	Proposed	Proposed
		Original Budget	Amendments	Amended Budget	Amendments	Amended Budget
47000	Federal Government					
47100	<u>Federal Through State</u>					
47143	Special Education - Grants to States	0	0	0	0	0
47147	Safe and Drug-Free Schools State Grant	190,732	0	190,732	0	190,732
47147-EES	Safe and Drug-Free Schools State Grant	74,250	0	74,250	0	74,250
47590-VR	Other Federal Through State VR Grant	212,069	0	212,069	0	212,069
	Total Federal Through State	477,051	0	477,051	0	477,051
47600	<u>Direct Federal Revenue</u>					
47640	ROTC Reimbursement	66,000	0	66,000	0	66,000
	Total Direct Federal Revenue	66,000	0	66,000	0	66,000
Total Federal Government		543,051	0	543,051	0	543,051
48600	Citizens Groups					
48610	Donations	0	0	0	0	0
48610-ALT	Donations - Alternative School	0	0	0	0	0
48610-BIT	Donations - Bridges in Transition	0	0	0	0	0
48610-CAMP	Donations - Camp Bravado	0	0	0	0	0
48610-CHR	Donations - Christmas	0	0	0	0	0
48610-CL	Donations - CL	0	0	0	0	0
48610-FAM	Donations - FAM	0	0	0	0	0
48610-FRC	Donations - FRC	0	0	0	0	0
48610-LCAP	Donations - LCA	0	0	0	0	0
48610-LCEF	Donations - LCEF	0	0	0	0	0
48610-MUSIC	Donations - MUSIC	0	0	0	0	0
48610-NMS	Donations - North Middle School	0	0	0	0	0
48610-RTI	Donations - RTI	0	0	0	0	0
48610-SHOE	Donations - SHOE	0	0	0	0	0
48610-SUP	Donations - SUP	0	0	0	0	0
48610-WSF	Donations - WSF	0	0	0	0	0
	Total Citizens Groups	0	0	0	0	0
48990	Other					
48990	Other	0	0	0	0	0
49700-INS	Insurance Recovery	0	0	0	0	0
49800	Transfer In	0	0	0	0	0
Total Revenues		39,663,500	0	39,663,500	(245,000)	39,418,500
	Total Other Source	0	0	0	0	0

Loudon County Board of Education
Fund 141
Fiscal Year Ending June 30, 2021

Account Number	General Fund 141 7/19/2020 19:18	2020-2021	2020-2021	Approved	Proposed	Proposed		
		Original Budget	Amendments	Amended Budget	Amendments	Amended Budget		
Total General Purpose School		39,663,500	0	39,663,500	(245,000)	39,418,500		

Loudon County Board of Education
Fund 141
Fiscal Year Ending June 30, 2021

General Fund 141 7/19/2020 19:18		2020-2021 Original Budget	2020-2021 Amendments	Approved Amended Budget	Proposed Amendments	Proposed Amended Budget	
General Purpose School Expenditures							
70000	Education						
71000	Instruction						
71100	<u>Regular Instruction Program</u>						
116	Teachers	14,345,440	0	14,345,440	0	14,345,440	
117	Career Ladder Program	50,000	0	50,000	0	50,000	
128	Homebound Teachers	7,000	0	7,000	0	7,000	
163	Educational Assistants	1,188,083	0	1,188,083	0	1,188,083	
195	Certified Substitute Teachers	45,600	0	45,600	0	45,600	
198	Non-Certified Substitute Teachers	128,914	0	128,914	0	128,914	
201	Social Security	977,433	0	977,433	0	977,433	
204	State Retirement	1,558,851	0	1,558,851	0	1,558,851	
205-RET-VIS	Employee and Dependent Insurance	2,803	0	2,803	0	2,803	
206	Life Insurance	57,632	0	57,632	0	57,632	
206-RET-LIF	Life Insurance	14,700	0	14,700	0	14,700	
207	Medical Insurance	2,622,913	0	2,622,913	0	2,622,913	
207-RET-MED	Medical Insurance	52,828	0	52,828	0	52,828	
208	Dental Insurance	132,143	0	132,143	0	132,143	
208-RET-DEN	Dental Insurance	36,800	0	36,800	0	36,800	
210	Unemployment Compensation	25,000	0	25,000	0	25,000	
212	Employer Medicare	228,593	0	228,593	0	228,593	
355	Travel	5,000	0	5,000	0	5,000	
399	Other Contracted Services	90,000	0	90,000	0	90,000	
429	Instructional Supplies	118,000	0	118,000	(25,000)	93,000	
429-EES	Instructional Supplies - Eaton Elementary School	48,197	0	48,197	0	48,197	
429-FLM	Instructional Supplies - Fort Loudoun Middle School	19,786	0	19,786	0	19,786	
429-GBS	Instructional Supplies - Greenback School	33,196	0	33,196	0	33,196	
429-HPS	Instructional Supplies - Highland Park Elementary School	25,832	0	25,832	0	25,832	
429-LES	Instructional Supplies - Loudon Elementary School	35,623	0	35,623	0	35,623	
429-LHS	Instructional Supplies - Loudon High School	46,040	0	46,040	0	46,040	
429-NMS	Instructional Supplies - North Middle School	42,256	0	42,256	0	42,256	
429-PES	Instructional Supplies - Philadelphia Elementary School	26,782	0	26,782	0	26,782	
429-SES	Instructional Supplies - Steekee Elementary School	13,975	0	13,975	0	13,975	
449	Textbooks	227,156	0	227,156	(175,000)	52,156	
471	Software	50,000	0	50,000	0	50,000	
524	In-Service Staff Development	2,000	0	2,000	0	2,000	
599	Other Charges	0	0	0	0	0	
790	Other Equipment	250,000	0	250,000	(25,000)	225,000	
790-EES	Other Equipment - Eaton Elementary School	12,780	0	12,780	0	12,780	
790-FLM	Other Equipment - Fort Loudoun Middle School	13,272	0	13,272	0	13,272	
790-GBS	Other Equipment - Greenback School	9,037	0	9,037	0	9,037	
790-HPS	Other Equipment - Highland Park Elementary School	7,776	0	7,776	0	7,776	
790-LES	Other Equipment - Loudon Elementary School	9,369	0	9,369	0	9,369	
790-LHS	Other Equipment - Loudon High School	13,526	0	13,526	0	13,526	
790-NMS	Other Equipment - North Middle School	30,865	0	30,865	0	30,865	
790-PES	Other Equipment - Philadelphia Elementary School	11,619	0	11,619	0	11,619	

LCBOE:
Moving funds to 72901
for COVID expenditures.

Loudon County Board of Education
Fund 141
Fiscal Year Ending June 30, 2021

General Fund 141 7/19/2020 19:18		2020-2021	2020-2021	Approved	Proposed	Proposed		
Account Number		Original Budget	Amendments	Amended Budget	Amendments	Amended Budget		
790-SES	Other Equipment - Steekee Elementary School	601	0	601	0	601		
	Total Regular Instruction Program	22,617,421	0	22,617,421	(225,000)	22,392,421		

Loudon County Board of Education
Fund 141
Fiscal Year Ending June 30, 2021

General Fund 141 7/19/2020 19:18		2020-2021	2020-2021	Approved	Proposed	Proposed
Account Number		Original Budget	Amendments	Amended Budget	Amendments	Amended Budget
71200						
<u>Special Education Program</u>						
116	Teachers	1,445,000	0	1,445,000	0	1,445,000
116-VR	Teachers	92,886	0	92,886	0	92,886
117	Career Ladder Program	4,000	0	4,000	0	4,000
128	Homebound Teachers	23,000	0	23,000	0	23,000
163	Educational Assistants	370,356	0	370,356	0	370,356
163-VR	Educational Assistants	57,297	0	57,297	0	57,297
171	Speech Pathologist	258,807	0	258,807	0	258,807
189	Other Salaries & Wages	40,000	0	40,000	0	40,000
195	Certified Substitute Teachers	5,000	0	5,000	0	5,000
198	Non-Certified Substitute Teachers	27,000	0	27,000	0	27,000
201	Social Security	134,649	0	134,649	0	134,649
201-VR	Social Security	10,031	0	10,031	0	10,031
204	State Retirement	212,761	0	212,761	0	212,761
204-VR	State Retirement	14,431	0	14,431	0	14,431
205-RET-VIS	Employee and Dependent Insurance	860	0	860	0	860
206	Life Insurance	8,418	0	8,418	0	8,418
206-RET-LIF	Life Insurance	1,511	0	1,511	0	1,511
206-VR	Life Insurance - VR Grant	1,500	0	1,500	0	1,500
207	Medical Insurance	357,291	0	357,291	0	357,291
207-RET-MED	Medical Insurance	3,750	0	3,750	0	3,750
207-VR	Medical Insurance - VR Grant	30,820	0	30,820	0	30,820
208	Dental Insurance	17,000	0	17,000	0	17,000
208-RET-DEN	Dental Insurance	4,300	0	4,300	0	4,300
208-VR	Dental Insurance - VR Grant	2,213	0	2,213	0	2,213
212	Employer Medicare	31,490	0	31,490	0	31,490
212-VR	Employer Medicare	2,891	0	2,891	0	2,891
429	Instructional Supplies	41,752	0	41,752	0	41,752
499	Other Supplies & Materials	40,000	0	40,000	0	40,000
725	Special Education Equipment	103,500	0	103,500	0	103,500
Total Special Instruction Program		3,342,514	0	3,342,514	0	3,342,514

Loudon County Board of Education
Fund 141
Fiscal Year Ending June 30, 2021

Account Number	General Fund 141 7/19/2020 19:18	2020-2021	2020-2021	Approved	Proposed	Proposed		
		Original Budget	Amendments	Amended Budget	Amendments	Amended Budget		
71300	<u>Vocational Education Program</u>							
116	Teachers	743,804	0	743,804	0	743,804		
117	Career Ladder Program	6,000	0	6,000	0	6,000		
163	Educational Assistants	20,808	0	20,808	0	20,808		
195	Certified Substitute Teachers	5,700	0	5,700	0	5,700		
198	Non-Certified Substitute Teachers	10,000	0	10,000	0	10,000		
201	Social Security	48,752	0	48,752	0	48,752		
204	State Retirement	78,402	0	78,402	0	78,402		
205-RET-VIS	Employee and Dependent Insurance	173	0	173	0	173		
206	Life Insurance	2,714	0	2,714	0	2,714		
206-RET-LIF	Life Insurance	400	0	400	0	400		
207	Medical Insurance	146,360	0	146,360	0	146,360		
208	Dental Insurance	5,400	0	5,400	0	5,400		
208-RET-DEN	Dental Insurance	810	0	810	0	810		
212	Employer Medicare	11,402	0	11,402	0	11,402		
336	Maintenance and Repair Services-Equipment	2,300	0	2,300	0	2,300		
355	Travel	8,000	0	8,000	0	8,000		
425	Gasoline	200	0	200	0	200		
429	Instructional Supplies	74,386	0	74,386	0	74,386		
790	Other Equipment	59,000	0	59,000	0	59,000		
	Total Vocational Education Program	1,224,611	0	1,224,611	0	1,224,611		
Total Instruction		27,184,546	0	27,184,546	(225,000)	26,959,546		

Loudon County Board of Education
Fund 141
Fiscal Year Ending June 30, 2021

Account Number	General Fund 141 7/19/2020 19:18		2020-2021	2020-2021	Approved	Proposed	Proposed
			Original Budget	Amendments	Amended Budget	Amendments	Amended Budget
72000	Support Services						
72110	<u>Attendance</u>						
105	Supervisor / Director		43,492	0	43,492	0	43,492
201	Social Security		2,696	0	2,696	0	2,696
204	State Retirement		2,918	0	2,918	0	2,918
206	Life Insurance		160	0	160	0	160
207	Medical Insurance		0	0	0	0	0
208	Dental Insurance		0	0	0	0	0
212	Employer Medicare		631	0	631	0	631
355	Travel		50	0	50	0	50
524	In-Service/Staff Development		2,000	0	2,000	0	2,000
	Total Attendance		51,947	0	51,947	0	51,947
72120	<u>Health Services</u>						
105-CSH	Supervisor/Director		44,211	0	44,211	0	44,211
131	Medical Personnel		285,421	0	285,421	0	285,421
189-CSH	Other Salaries & Wages		34,150	0	34,150	0	34,150
198-CSH	Non-Certified Substitute Teachers		8,000	0	8,000	0	8,000
201	Social Security		17,696	0	17,696	0	17,696
201-CSH	Social Security		4,858	0	4,858	0	4,858
204	State Retirement		19,152	0	19,152	0	19,152
204-CSH	State Retirement		6,570	0	6,570	0	6,570
205-RET-VIS	Employee and Dependent Insurance		102	0	102	0	102
206	Life Insurance		1,635	0	1,635	0	1,635
206-CSH	Life Insurance		320	0	320	0	320
206-RET-LIF	Life Insurance		325	0	325	0	325
207	Medical Insurance		60,080	0	60,080	0	60,080
207-CSH	Medical Insurance		7,524	0	7,524	0	7,524
208	Dental Insurance		2,400	0	2,400	0	2,400
208-CSH	Dental Insurance		375	0	375	0	375
208-RET-DEN	Dental Insurance		432	0	432	0	432
212	Employer Medicare		4,138	0	4,138	0	4,138
212-CSH	Employer Medicare		1,136	0	1,136	0	1,136
355	Travel		400	0	400	0	400
355-CSH	Travel		3,000	0	3,000	0	3,000
399	Other Contracted Services		9,100	0	9,100	0	9,100
399-CSH	Other Contracted Services		6,000	0	6,000	0	6,000
413	Drugs and Medical Supplies		14,000	0	14,000	0	14,000
435	Office Supplies		1,000	0	1,000	0	1,000
499-CSH	Other Supplies & Materials		23,856	0	23,856	0	23,856
524	In-Service/Staff Development		600	0	600	0	600
524-CSH	In-Service/Staff Development		10,000	0	10,000	0	10,000
735-CSH	Health Equipment		10,000	0	10,000	0	10,000
	Total Health Services		576,481	0	576,481	0	576,481

Loudon County Board of Education
Fund 141
Fiscal Year Ending June 30, 2021

General Fund 141 7/19/2020 19:18		2020-2021	2020-2021	Approved	Proposed	Proposed	
Account Number		Original Budget	Amendments	Amended Budget	Amendments	Amended Budget	
72130	<i>Other Student Support</i>						
117	Career Ladder Program	1,000	0	1,000	0	1,000	
123	Guidance Personnel	678,404	0	678,404	0	678,404	
162	Clerical Personnel	151,799	0	151,799	0	151,799	
201	Social Security	51,535	0	51,535	0	51,535	
204	State Retirement	79,961	0	79,961	0	79,961	
205-RET-VIS	Employee and Dependent Insurance	102	0	102	0	102	
206	Life Insurance	2,746	0	2,746	0	2,746	
206-RET-LIF	Life Insurance	480	0	480	0	480	
207	Medical Insurance	158,310	0	158,310	0	158,310	
207-RET-MED	Medical Insurance	0	0	0	0	0	
208	Dental Insurance	6,425	0	6,425	0	6,425	
208-RET-DEN	Dental Insurance	432	0	432	0	432	
212	Employer Medicare	12,053	0	12,053	0	12,053	
322	Evaluation and Testing	20,000	0	20,000	0	20,000	
355	Travel	500	0	500	0	500	
399-SAFE	Contracted Services	0	0	0	2,596	2,596	
524	In Service/Staff Development	4,500	0	4,500	0	4,500	
790-SAFE	Other Equipment	0	0	0	0	0	
	Total Other Student Support	1,168,247	0	1,168,247	2,596	1,170,843	

LCBOE:
Remaining balance from
FY20 SAFE grant.

Loudon County Board of Education
Fund 141
Fiscal Year Ending June 30, 2021

Account Number	General Fund 141 7/19/2020 19:18		2020-2021	2020-2021	Approved	Proposed	Proposed		
			Original Budget	Amendments	Amended Budget	Amendments	Amended Budget		
72210	<u>Regular Instruction Program</u>								
105	Supervisor/Director		272,685	0	272,685	0	272,685		
117	Career Ladder Program		5,000	0	5,000	0	5,000		
129	Librarians		499,195	0	499,195	0	499,195		
161	Secretary (s)		285,374	0	285,374	0	285,374		
201	Social Security		65,860	0	65,860	0	65,860		
204	State Retirement		98,935	0	98,935	0	98,935		
205-RET-VIS	Employee and Dependent Insurance		465	0	465	0	465		
206	Life Insurance		3,448	0	3,448	0	3,448		
206-RET-LIF	Life Insurance		1,790	0	1,790	0	1,790		
207	Medical Insurance		190,150	0	190,150	0	190,150		
207-RET-MED	Medical Insurance		5,000	0	5,000	0	5,000		
208	Dental Insurance		7,725	0	7,725	0	7,725		
208-REF-DEN	Dental Insurance		3,610	0	3,610	0	3,610		
212	Employer Medicare		15,403	0	15,403	0	15,403		
355	Travel		17,000	0	17,000	0	17,000		
432-EES	Library Books/Media - Eaton Elementary School		8,768	0	8,768	0	8,768		
432-FLM	Library Books/Media - Fort Loudoun Middle School		4,697	0	4,697	0	4,697		
432-GBS	Library Books/Media - Greenback School		13,385	0	13,385	0	13,385		
432-HPS	Library Books/Media - Highland Park Elementary School		3,659	0	3,659	0	3,659		
432-LES	Library Books/Media - Loudon Elementary School		5,606	0	5,606	0	5,606		
432-LHS	Library Books/Media - Loudon High School		9,536	0	9,536	0	9,536		
432-NMS	Library Books/Media - North Middle School		6,696	0	6,696	0	6,696		
432-PES	Library Books/Media - Philadelphia Elementary School		4,137	0	4,137	0	4,137		
432-SES	Library Books/Media - Steekee Elementary School		3,500	0	3,500	0	3,500		
524	In-Service/Staff Development		12,000	0	12,000	0	12,000		
524-EES	In-Service/Staff Development - Eaton Elementary School		5,500	0	5,500	0	5,500		
524-FLM	In-Service/Staff Development - Fort Loudoun Middle School		5,300	0	5,300	0	5,300		
524-GBS	In-Service/Staff Development - Greenback School		13,300	0	13,300	0	13,300		
524-HPS	In-Service/Staff Development - Highland Park Elem. Scho		4,900	0	4,900	0	4,900		
524-LES	In-Service/Staff Development - Loudon Elementary School		5,000	0	5,000	0	5,000		
524-LHS	In-Service/Staff Development - Loudon High School		5,255	0	5,255	0	5,255		
524-NMS	In-Service/Staff Development - North Middle School		6,750	0	6,750	0	6,750		
524-PES	In-Service/Staff Development - Philadelphia Elem. School		6,400	0	6,400	0	6,400		
524-SES	In-Service/Staff Development - Steekee Elementary Schoc		4,000	0	4,000	0	4,000		
790	Other Equipment		0	0	0	0	0		
790-SAFE	Other Equipment		0	0	0	0	0		
	Total Regular Instruction Program		1,600,029	0	1,600,029	0	1,600,029		

Loudon County Board of Education
Fund 141
Fiscal Year Ending June 30, 2021

Account Number	General Fund 141 7/19/2020 19:18		2020-2021	2020-2021	Approved	Proposed	Proposed		
			Original Budget	Amendments	Amended Budget	Amendments	Amended Budget		
72220	<u>Special Education Program</u>								
105	Supervisor/Director		29,103	0	29,103	0	29,103		
117	Career Ladder Program		1,000	0	1,000	0	1,000		
124	Psychological Personnel		296,085	0	296,085	0	296,085		
171	Speech Pathologist		0	0	0	0	0		
201	Social Security		20,258	0	20,258	0	20,258		
204	State Retirement		33,556	0	33,556	0	33,556		
205-RET-VIS	Employee and Dependent Insurance		203	0	203	0	203		
206	Life Insurance		1,200	0	1,200	0	1,200		
206-RET-LIF	Life Insurance		385	0	385	0	385		
207	Medical Insurance		58,870	0	58,870	0	58,870		
207-RET-MED	Medical Insurance		3,900	0	3,900	0	3,900		
208	Dental Insurance		2,625	0	2,625	0	2,625		
208-REF-DEN	Dental Insurance		863	0	863	0	863		
212	Employer Medicare		4,738	0	4,738	0	4,738		
355	Travel		21,650	0	21,650	0	21,650		
399	Other Contracted Services		181,250	0	181,250	0	181,250		
524	In-Service/Staff Development		0	0	0	0	0		
	Total Special Education Program		655,686	0	655,686	0	655,686		

Loudon County Board of Education
Fund 141
Fiscal Year Ending June 30, 2021

Account Number	General Fund 141 7/19/2020 19:18		2020-2021	2020-2021	Approved	Proposed	Proposed		
			Original Budget	Amendments	Amended Budget	Amendments	Amended Budget		
72230	<u>Vocational Education Program</u>								
105	Supervisor/Director		77,607	0	77,607	0	77,607		
162	Clerical Personnel		40,780	0	40,780	0	40,780		
201	Social Security		7,340	0	7,340	0	7,340		
204	State Retirement		10,707	0	10,707	0	10,707		
205-RET-VIS	Employee and Dependent Insurance		102	0	102	0	102		
206	Life Insurance		360	0	360	0	360		
206-RET-LIF	Life Insurance		300	0	300	0	300		
207	Medical Insurance		16,930	0	16,930	0	16,930		
207-RET-MED	Medical Insurance		0	0	0	0	0		
208	Dental Insurance		845	0	845	0	845		
208-REF-DEN	Dental Insurance		440	0	440	0	440		
212	Employer Medicare		1,717	0	1,717	0	1,717		
355	Travel		2,000	0	2,000	0	2,000		
399	Other Contracted Services		500	0	500	0	500		
524	In-Service/Staff Development		3,000	0	3,000	0	3,000		
	Total Vocational Education Program		162,628	0	162,628	0	162,628		

Loudon County Board of Education
Fund 141
Fiscal Year Ending June 30, 2021

Account Number	General Fund 141 7/19/2020 19:18		2020-2021	2020-2021	Approved	Proposed	Proposed	
			Original Budget	Amendments	Amended Budget	Amendments	Amended Budget	
72250	<u>Education Technology</u>							
105	Supervisor/Director		49,414	0	49,414	0	49,414	
117	Career Ladder Program		1,000	0	1,000	0	1,000	
120	Computer Programmer		249,924	0	249,924	0	249,924	
201	Social Security		18,620	0	18,620	0	18,620	
204	State Retirement		21,949	0	21,949	0	21,949	
206	Life Insurance		961	0	961	0	961	
207	Medical Insurance		60,360	0	60,360	0	60,360	
208	Dental Insurance		2,250	0	2,250	0	2,250	
212	Employer Medicare		4,354	0	4,354	0	4,354	
350	Internet Connectivity		108,000	0	108,000	0	108,000	
355	Travel		8,000	0	8,000	0	8,000	
399	Other Contracted Services		9,400	0	9,400	0	9,400	
471	Software		120,000	0	120,000	0	120,000	
499	Other Supplies & Materials		4,000	0	4,000	0	4,000	
524	In Service/Staff Development		12,430	0	12,430	0	12,430	
790	Other Equipment		165,469	0	165,469	0	165,469	
	Total Central & Other Transportation		836,131	0	836,131	0	836,131	

Loudon County Board of Education
Fund 141
Fiscal Year Ending June 30, 2021

Account Number	General Fund 141 7/19/2020 19:18	2020-2021	2020-2021	Approved	Proposed	Proposed		
		Original Budget	Amendments	Amended Budget	Amendments	Amended Budget		
72310	<u>Board of Education</u>							
191	Board and Committee Members Fees	40,300	0	40,300	0	40,300		
201	Social Security	2,499	0	2,499	0	2,499		
204	State Retirement	1,600	0	1,600	0	1,600		
206	Life Insurance	1,480	0	1,480	0	1,480		
208	Dental Insurance	2,300	0	2,300	0	2,300		
212	Employer Medicare	585	0	585	0	585		
305	Audit Services	12,300	0	12,300	0	12,300		
331	Legal Services	37,000	0	37,000	0	37,000		
355	Travel	4,000	0	4,000	0	4,000		
506	Liability Insurance	29,149	0	29,149	0	29,149		
508	Premium on Corporate Surety Bonds	400	0	400	0	400		
509	Refunds	15,000	0	15,000	0	15,000		
510	Trustee's Commission	300,000	0	300,000	0	300,000		
513	Workman's Compensation Insurance	203,496	0	203,496	0	203,496		
524	In Service/Staff Development	25,000	0	25,000	0	25,000		
599	Other Charges	0	0	0	0	0		
	Total Board of Education	675,109	0	675,109	0	675,109		

Loudon County Board of Education
Fund 141
Fiscal Year Ending June 30, 2021

General Fund 141		2020-2021	2020-2021	Approved	Proposed	Proposed	
7/19/2020 19:18		Original Budget	Amendments	Amended Budget	Amendments	Amended Budget	
72320	<i>Office of the Superintendent</i>						
101	County Official/Administrative Office	253,600	0	253,600	0	253,600	
117	Career Ladder Program	1,000	0	1,000	0	1,000	
161	Secretary (s)	45,232	0	45,232	0	45,232	
189	Other Salaries & Wages	7,200	0	7,200	0	7,200	
201	Social Security	17,708	0	17,708	0	17,708	
204	State Retirement	18,268	0	18,268	0	18,268	
205-RET-VIS	Employee and Dependent Insurance	0	0	0	0	0	
206	Life Insurance	350	0	350	0	350	
206-RET-LIF	Life Insurance	0	0	0	0	0	
207	Medical Insurance	31,767	0	31,767	0	31,767	
208	Dental Insurance	1,354	0	1,354	0	1,354	
208-REF-DEN	Dental Insurance	0	0	0	0	0	
212	Employer Medicare	4,103	0	4,103	0	4,103	
302	Advertising	1,000	0	1,000	0	1,000	
307	Communication	50,000	0	50,000	0	50,000	
320	Dues & Memberships	14,000	0	14,000	0	14,000	
348	Postal Charges	2,500	0	2,500	0	2,500	
355	Travel	500	0	500	0	500	
399	Other Contracted Services	40,000	0	40,000	0	40,000	
435	Office Supplies	8,000	0	8,000	0	8,000	
524	In Service/Staff Development	7,300	0	7,300	0	7,300	
599	Other Charges	3,500	0	3,500	5,000	8,500	
Total Office of the Superintendent		507,382	0	507,382	5,000	512,382	

LCBOE:
June Donation - pulled
from fund balance.

Loudon County Board of Education
Fund 141
Fiscal Year Ending June 30, 2021

General Fund 141		2020-2021	2020-2021	Approved	Proposed	Proposed		
7/19/2020 19:18		Original Budget	Amendments	Amended Budget	Amendments	Amended Budget		
72410	<u>Office of the Principal</u>							
104	Principals	811,790	0	811,790	0	811,790		
117	Career Ladder Program	6,000	0	6,000	0	6,000		
201	Social Security	50,703	0	50,703	0	50,703		
204	State Retirement	83,988	0	83,988	0	83,988		
205-RET-VIS	Employee and Dependent Insurance	182	0	182	0	182		
206	Life Insurance	1,450	0	1,450	0	1,450		
206-RET-LIF	Life Insurance	2,000	0	2,000	0	2,000		
207	Medical Insurance	116,550	0	116,550	0	116,550		
207-RET-MED	Medical Insurance	4,350	0	4,350	0	4,350		
208	Dental Insurance	4,630	0	4,630	0	4,630		
208-REF-DEN	Dental Insurance	3,400	0	3,400	0	3,400		
212	Employer Medicare	11,858	0	11,858	0	11,858		
307	Communication	90,000	0	90,000	0	90,000		
348	Postage	5,000	0	5,000	0	5,000		
355	Travel	10,000	0	10,000	0	10,000		
524	In Service/Staff Development	3,000	0	3,000	0	3,000		
	Total Office of the Principal	1,204,901	0	1,204,901	0	1,204,901		
72510	<u>Fiscal Services</u>							
119	Accountants/Bookkeepers	66,774	0	66,774	0	66,774		
201	Social Security	4,140	0	4,140	0	4,140		
204	State Retirement	4,481	0	4,481	0	4,481		
206	Life Insurance	165	0	165	0	165		
206-RET-LIF	Life Insurance	86	0	86	0	86		
207	Medical Insurance	7,090	0	7,090	0	7,090		
208	Dental Insurance	375	0	375	0	375		
212	Employer Medicare	969	0	969	0	969		
355	Travel	200	0	200	0	200		
524	In Service/Staff Development	1,800	0	1,800	0	1,800		
	Total Fiscal Services	86,080	0	86,080	0	86,080		

Loudon County Board of Education
Fund 141
Fiscal Year Ending June 30, 2021

General Fund 141 7/19/2020 19:18		2020-2021	2020-2021	Approved	Proposed	Proposed	
Account Number		Original Budget	Amendments	Amended Budget	Amendments	Amended Budget	
72610	<i>Operation of Plant</i>						
166	Custodial Personnel	137,341	0	137,341	0	137,341	
201	Social Security	8,516	0	8,516	0	8,516	
204	State Retirement	9,216	0	9,216	0	9,216	
205-RET-VIS	Employee and Dependent Insurance	275	0	275	0	275	
206	Life Insurance	800	0	800	0	800	
206-RET-LIF	Life Insurance	840	0	840	0	840	
207	Medical Insurance	49,783	0	49,783	0	49,783	
208	Dental Insurance	1,880	0	1,880	0	1,880	
208-RET-DEN	Dental Insurance	2,102	0	2,102	0	2,102	
212	Employer Medicare	1,992	0	1,992	0	1,992	
399	Other Contracted Services	1,295,000	0	1,295,000	0	1,295,000	
399-FLM	Other Contracted Services- Fort Loudoun Middle School	2,500	0	2,500	0	2,500	
399-GBS	Other Contracted Services - Greenback School	12,500	0	12,500	0	12,500	
399-LHS	Other Contracted Services - Loudon High School	10,000	0	10,000	0	10,000	
399-NMS	Other Contracted Services - North Middle School	2,500	0	2,500	0	2,500	
399-PES	Other Contracted Services - Philadelphia Elementary Scho	2,500	0	2,500	0	2,500	
415	Electricity	1,130,641	0	1,130,641	0	1,130,641	
425	Gasoline	1,000	0	1,000	0	1,000	
434	Natural Gas	107,000	0	107,000	0	107,000	
454	Water and Sewer	155,570	0	155,570	0	155,570	
502	Building and Contents Insurance	348,064	0	348,064	0	348,064	
	Total Operation of Plant	3,280,020	0	3,280,020	0	3,280,020	

Loudon County Board of Education
Fund 141
Fiscal Year Ending June 30, 2021

Account Number	General Fund 141 7/19/2020 19:18		2020-2021	2020-2021	Approved	Proposed	Proposed
			Original Budget	Amendments	Amended Budget	Amendments	Amended Budget
72620	<u>Maintenance of Plant</u>						
335	Maintenance and Repair Services-Building		250,000	0	250,000	0	250,000
335-PES	Maintenance and Repair Services-Building		0	0	0	0	0
	Total Maintenance of Plant		250,000	0	250,000	0	250,000
72710	<u>Transportation</u>						
105	Supervisor/Director		55,785	0	55,785	0	55,785
201	Social Security		3,459	0	3,459	0	3,459
204	State Retirement		3,744	0	3,744	0	3,744
206	Life Insurance		187	0	187	0	187
207	Medical Insurance		13,106	0	13,106	0	13,106
208	Dental Insurance		375	0	375	0	375
212	Employer Medicare		809	0	809	0	809
313	Contracts with Parents		9,070	0	9,070	0	9,070
315	Contracts with Vehicle Owners		1,830,000	0	1,830,000	0	1,830,000
327	Freight Expenses		100	0	100	0	100
336	Maintenance and Repair Services - Equipment		6,243	0	6,243	0	6,243
340	Medical and Dental Services		3,000	0	3,000	0	3,000
348	Postal Charges		100	0	100	0	100
355	Travel		1,750	0	1,750	0	1,750
399	Other Contracted Services		3,200	0	3,200	0	3,200
435	Office Supplies		2,000	0	2,000	0	2,000
524	In-Service/Staff Development		5,000	0	5,000	0	5,000
599	Other Charges		5,985	0	5,985	0	5,985
790	Other Equipment		4,000	0	4,000	0	4,000
	Total Transportation		1,947,913	0	1,947,913	0	1,947,913
	Total Support Services		13,002,554	0	13,002,554	7,596	13,010,150
Total Education			40,187,100	0	40,187,100	(217,404)	39,969,696

Loudon County Board of Education
Fund 141
Fiscal Year Ending June 30, 2021

Account Number	General Fund 141 7/19/2020 19:18		2020-2021	2020-2021	Approved	Proposed	Proposed		
			Original Budget	Amendments	Amended Budget	Amendments	Amended Budget		
73300	<i>Community Services</i>								
105	Supervisor/Director		0	0	0	0	0		
105-CCLC	Supervisor/Director - CCLC		11,444	0	11,444	0	11,444		
105-LEAP	Supervisor/Director - LEAP Grant		18,427	0	18,427	0	18,427		
116-CCLC	Teachers - CCLC		100,000	0	100,000	0	100,000		
116-CCLC-EES	Teachers - CCLC		45,000	0	45,000	0	45,000		
116-LEAP	Teachers - LEAP		200,000	0	200,000	0	200,000		
162	Clerical Personnel		0	0	0	0	0		
163-CCLC	Educational Assistants - CCLC Grant		20,000	0	20,000	0	20,000		
163-CCLC-EES	Educational Assistants - CCLC Grant		8,000	0	8,000	0	8,000		
163-LEAP	Educational Assistants - LEAPS Grant		29,500	0	29,500	0	29,500		
189-FRC	Other Salaries & Wages - FRC		25,893	0	25,893	0	25,893		
201	Social Security		0	0	0	0	0		
201-CCLC	Social Security CCLC Grant		8,150	0	8,150	0	8,150		
201-CCLC-EES	Social Security CCLC Grant		3,286	0	3,286	0	3,286		
201-FRC	Social Security - FRC Grant		1,605	0	1,605	0	1,605		
201-LEAP	Social Security - LEAPS Grant		15,371	0	15,371	0	15,371		
204	State Retirement		0	0	0	0	0		
204-CCLC	State Retirement - CCLC Grant		11,802	0	11,802	0	11,802		
204-CCLC-EES	State Retirement - CCLC Grant		5,244	0	5,244	0	5,244		
204-FRC	State Retirement - FRC Grant		1,738	0	1,738	0	1,738		
204-LEAP	State Retirement - LEAPS Grant		23,239	0	23,239	0	23,239		
206	Life Insurance		188	0	188	0	188		
206-RET-LIF	Life Insurance		216	0	216	0	216		
206-LEAP	Life Insurance - LEAPS Grant		0	0	0	0	0		
207	Medical Insurance		7,524	0	7,524	0	7,524		
207-LEAP	Medical Insurance - LEAPS Grant		0	0	0	0	0		
208	Dental Insurance		375	0	375	0	375		
208-RET-DEN	Dental Insurance		1,011	0	1,011	0	1,011		
208-LEAP	Dental Insurance - LEAPS Grant		0	0	0	0	0		
212	Employer Medicare		0	0	0	0	0		
212-CCLC	Employer Medicare - CCLC Grant		1,906	0	1,906	0	1,906		
212-CCLC-EES	Employer Medicare - CCLC Grant		769	0	769	0	769		
212-FRC	Employer Medicare FRC		375	0	375	0	375		
212-LEAP	Employer Medicare - LEAPS Grant		3,595	0	3,595	0	3,595		
355	Travel		1,500	0	1,500	0	1,500		
355-CCLC	Travel - CCLC		400	0	400	0	400		
355-CCLC-EES	Travel - CCLC		200	0	200	0	200		
355-LEAP	Travel - LEAPS Grant		1,000	0	1,000	0	1,000		
399	Other Contracted Services		0	0	0	0	0		
399-CCLC	Other Contracted Services - CCLC		3,000	0	3,000	0	3,000		
399-CCLC-EES	Other Contracted Services - CCLC		1,000	0	1,000	0	1,000		
399-LEAP	Other Contracted Services - LEAP		5,000	0	5,000	0	5,000		
422	Food Supplies		5,300	0	5,300	0	5,300		
422-CCLC	Food Supplies - CCLC		2,000	0	2,000	0	2,000		
422-CCLC-EES	Food Supplies - CCLC		1,000	0	1,000	0	1,000		
422-WSF	Food Supplies		0	0	0	0	0		
429-CCLC	Instructional Supplies - CCLC		0	0	0	0	0		
429-LEAP	Instructional Supplies - LEAP		2,500	0	2,500	0	2,500		
499	Other Supplies and Materials		4,000	0	4,000	0	4,000		
499-CCLC	Other Supplies & Materials - CCLC		28,298	0	28,298	0	28,298		

Loudon County Board of Education
Fund 141
Fiscal Year Ending June 30, 2021

General Fund 141 7/19/2020 19:18		2020-2021	2020-2021	Approved	Proposed	Proposed	
Account Number		Original Budget	Amendments	Amended Budget	Amendments	Amended Budget	
499-CCLC-EES	Other Supplies & Materials - CCLC	8,751	0	8,751	0	8,751	LCBOE: June FRC donation - pulled from fund balance.
499-CHR	Other Supplies & Materials - CHR	0	0	0	0	0	
499-CL	Other Supplies & Materials - CL	0	0	0	0	0	
499-FAM	Other Supplies & Materials - FAM	0	0	0	8,000	8,000	
499-FUEL	Other Supplies & Materials - FUEL	0	0	0	0	0	
499-LEAP	Other Supplies & Materials - LEAPS Grant	7,448	0	7,448	0	7,448	
499-SUP	Other Supplies & Materials - SUP	0	0	0	0	0	
524	In Service/Staff Development	500	0	500	0	500	
524-CCLC	In Service/Staff Development - CCLC	3,732	0	3,732	0	3,732	
524-CCLC-EES	In Service/Staff Development - CCLC	1,000	0	1,000	0	1,000	
524-FRC	In Service/Staff Development - CCLC	600	0	600	0	600	
524-LEAP	In Service/Staff Development - LEAP	3,545	0	3,545	0	3,545	
599-FAM	Other Charges	0	0	0	0	0	
790	Other Equipment	2,000	0	2,000	0	2,000	
790-CCLC	Other Equipment - CCLC	0	0	0	0	0	
Total Community Services		627,432	0	627,432	8,000	635,432	

Loudon County Board of Education
Fund 141
Fiscal Year Ending June 30, 2021

General Fund 141 7/19/2020 19:18		2020-2021 Original Budget	2020-2021 Amendments	Approved Amended Budget	Proposed Amendments	Proposed Amended Budget	
73400	<u>Early Childhood Education</u>						
116	Teachers	381,716	0	381,716	0	381,716	
163	Educational Assistants	150,453	0	150,453	0	150,453	
195	Certified Substitute Teachers	1,000	0	1,000	0	1,000	
198	Non-Certified Substitute Teachers	6,000	0	6,000	0	6,000	
201	Social Security	33,429	0	33,429	0	33,429	
204	State Retirement	49,270	0	49,270	0	49,270	
206	Life Insurance	2,395	0	2,395	0	2,395	
206-RET-LIF	Life Insurance	652	0	652	0	652	
207	Medical Insurance	92,830	0	92,830	0	92,830	
207-RET-MED	Medical Insurance	1,950	0	1,950	0	1,950	
208	Dental Insurance	4,500	0	4,500	0	4,500	
208-RET-DEN	Dental Insurance	1,640	0	1,640	0	1,640	
212	Employer Medicare	7,818	0	7,818	0	7,818	
311-HHA	Contracts with Other School Systems	81,027	0	81,027	0	81,027	
429	Instructional Supplies	1,600	0	1,600	0	1,600	
499	Other Supplies & Materials	0	0	0	0	0	
524	In-Service/Staff Development	1,600	0	1,600	0	1,600	
599	Other Charges	420	0	420	0	420	
790	Other Equipment	0	0	0	0	0	
	Total Early Childhood Education	818,300	0	818,300	0	818,300	
72901	Education COVID-19						
72901	<u>Support Services</u>						
499	Other Supplies & Materials	0	0	0	52,238	52,238	LCBOE: COVID-19 expenditures. Moved \$16,000 from textbooks, supplies, & equipment lines. Moved \$36,238 (growth funding) from fund balance.
790	Other Equipment	0	0	0	209,000	209,000	
	Total Regular Capital Outlay	0	0	0	261,238	261,238	LCBOE: COVID-19 expenditures. Moved from textbooks, supplies, & equipment.
76000	Capital Outlay						
76100	<u>Regular Capital Outlay</u>						
706	Building Construction	0	0	0	0	0	
	Total Regular Capital Outlay	0	0	0	0	0	

Loudon County Board of Education
Fund 141
Fiscal Year Ending June 30, 2021

General Fund 141 7/19/2020 19:18		2020-2021 Original Budget	2020-2021 Amendments	Approved Amended Budget	Proposed Amendments	Proposed Amended Budget
Account Number						
80000	Debt Service					
82130	Principal					
601	Principal On Bonds	0	0	0	0	0
602	Principal on Notes	0	0	0	0	0
		0	0	0	0	0
82300	Other Debt Service					
82330	Education					
699	Other Debt Service	0	0	0	0	0
	Total Education Debt Service	0	0	0	0	0
80000	Total Education Debt Service	0	0	0	0	0
90000	Capital Projects					
99000	Other Uses					
99100	Transfer out					
590	Transfer to other funds	0	0	0	0	0
	Total Expenditures	41,632,832	0	41,632,832	51,834	41,684,666
	Total Other Uses	0	0	0	0	0
Total General Purpose School		41,632,832	0	41,632,832	51,834	41,684,666
Beginning Fund Balance (Unaudited)		3,086,337	0	3,086,337	0	3,086,337
Total Revenue		39,663,500	0	39,663,500	(245,000)	39,418,500
Total Available Funds		42,749,837	0	42,749,837	(245,000)	42,504,837
Total Expenditures		41,632,832	0	41,632,832	51,834	41,684,666
Estimated Ending Fund Balance		1,117,005	0	1,117,005	(296,834)	820,171

Loudon County Board of Education
Fund 141
Fiscal Year Ending June 30, 2021

Account Number	General Fund 141						
	7/19/2020 19:18	2020-2021	2020-2021	Approved	Proposed	Proposed	
		Original Budget	Amendments	Amended Budget	Amendments	Amended Budget	
	* \$300,000 was transferred to sub fund 999 of fund 142 that can be pulled back for regular fund balance purposes at any time.						

Loudon County Commission

Exhibit

Budget Recommendation

Central Cafeteria

Fund 143

Loudon County Board of Education
Fund 143
Ending June 30, 2021

Account Number	Centralized Cafeteria Fund 143		2020-2021	2020-2021	Approved	Proposed	Proposed
	7/19/2020 19:22		Original Budget	Amendments	Amended Budget	Amendments	Amended Budget
	Centralized Cafeteria Fund Revenues						
43000	Charges for Current Services						
43500	Education Charges						
43521	Lunch Payments - Children		430,000	0	430,000	0	430,000
43522	Lunch Payments - Adults		35,000	0	35,000	0	35,000
43523	Income from Breakfast		0	0	0	0	0
43525	A La Carte Sales		10,500	0	10,500	0	10,500
43570	Receipts from Individual Schools		100	0	100	0	100
570-OVRSII	Receipts from Individual Schools		0	0	0	0	0
570-SFPAY	Receipts from Individual Schools		0	0	0	0	0
43570-SFP	Receipts from Individual Schools		0	0	0	0	0
	Total Education Charges		475,600	0	475,600	0	475,600
44000	Other Local Revenues						
44100	Recurring Income						
44110	Investment Income		5,000	0	5,000	0	5,000
	Total Other Local Revenues		5,000	0	5,000	0	5,000
46000	State of Tennessee						
46520	School Food Service		25,000	0	25,000	0	25,000
46980-AFIHK	Other State Grants		0	0	0	0	0
46980-NSLP	Other State Grants		0	0	0	0	0
	Total State Education Funds		25,000	0	25,000	0	25,000
47000	Federal Government						
47100	Federal Through State						
47111	USDA School Lunch Program		1,221,142	0	1,221,142	0	1,221,142
47113	Breakfast		375,613	0	375,613	0	375,613
47114	USDA-Other		0	0	0	0	0
47114-SFP	USDA-Other		66,000	0	66,000	0	66,000
47590	Other Federal Through State		140,021	0	140,021	0	140,021
47590-NSLP	Other Federal Through State		0	0	0	0	0
	Total Federal Through State		1,802,776	0	1,802,776	0	1,802,776
47600	Direct Federal						
47990	Other Direct Federal		174,000	0	174,000	0	174,000
	Total Direct Federal		174,000	0	174,000	0	174,000
49000	Other Sources						
49800	Transfer In		0	0	0	0	0
	Total Other Sources		0	0	0	0	0
	TOTAL REVENUE		2,482,376	0	2,482,376	0	2,482,376

Loudon County Board of Education
Fund 143
Ending June 30, 2021

Centralized Cafeteria Fund Expenditures						
73000	Operation of Non-Instructional Services					
73100	Food Service					
165	Cafeteria Personnel	741,000	0	741,000	13,117	754,117
165-SFP	Cafeteria Personnel	7,650	0	7,650	0	7,650
201	Social Security	45,942	0	45,942	813	46,755
201-SFP	Social Security	475	0	475	0	475
204	State Retirement	44,250	0	44,250	880	45,130
204-SFP	State Retirement	744	0	744	0	744
205-RET-VIS	Employee and Dependent Insurance	270	0	270	0	270
206	Life Insurance	4,950	0	4,950	0	4,950
206-RET-LIF	Life Insurance	1,250	0	1,250	0	1,250
207	Medical Insurance	173,200	0	173,200	0	173,200
208	Dental Insurance	9,792	0	9,792	0	9,792
208-RET-DEN	Dental Insurance	1,300	0	1,300	0	1,300
212	Employer Medicare	10,745	0	10,745	190	10,935
212-SFP	Employer Medicare	112	0	112	0	112
320	Dues and Memberships	4,650	0	4,650	0	4,650
334	Maintenance Agreements	13,552	0	13,552	0	13,552
355	Travel	2,800	0	2,800	0	2,800
355-SFP	Travel	500	0	500	0	500
399	Other Contracted Services	4,000	0	4,000	0	4,000
422	Food Supplies	1,240,533	0	1,240,533	0	1,240,533
422-SFP	Food Supplies	25,000	0	25,000	0	25,000
435	Office Supplies	1,950	0	1,950	0	1,950
499	Other Supplies and Materials	95,000	0	95,000	0	95,000
499-SFP	Other Supplies and Materials	1,500	0	1,500	0	1,500
524	In-Service/Staff Development	4,500	0	4,500	0	4,500
524-SFP	In-Service/Staff Development	2,500	0	2,500	0	2,500
599	Other Charges	2,450	0	2,450	0	2,450
710	Food Service Equipment	14,242	0	14,242	0	14,242
710-AFIHK	Food Service Equipment	0	0	0	0	0
710-NSLP	Food Service Equipment	0	0	0	0	0
710-SFP	Food Service Equipment	27,519	0	27,519	0	27,519
	Total Food Service	2,482,376	0	2,482,376	15,000	2,497,376
	Total Operation of Non-Instructional Services	2,482,376	0	2,482,376	15,000	2,497,376
	Total Expenditures	2,482,376	0	2,482,376	15,000	2,497,376
	Beginning Fund Balance	610,316	0	610,316	0	610,316
	Total Revenue	2,482,376	0	2,482,376	0	2,482,376
	Total Available Funds	3,092,692	0	3,092,692	0	3,092,692
	Total Expenditures	2,482,376	0	2,482,376	15,000	2,497,376
	Estimated Ending Fund Balance	610,316	0	610,316	(15,000)	595,316

LCBOE:
June donation for July
feeding.

Loudon County Commission

Exhibit

Bonds & Notaries

LOUDON COUNTY CLERK
CARRIE MCKELVEY COUNTY CLERK
101 MULBERRY ST STE 200
LOUDON TN 37774
Telephone 865-458-3314
Fax 865-458-9891

Notaries to be elected August 03, 2020

TINA SUE BAKER
TAMMI A BIVENS
JOSEPH BORCZYK
MARY SUE JORDAN
TERESA M KIDD

SHANAN LETTIERI
JACOB PHILLIPS
JANE RAINES
REBECCA SIMMONS