

# Loudon County Commission Workshop

Loudon, Tennessee  
Monday, June 15, 2020  
Courthouse Annex  
6:00 P.M.

## AGENDA

### **1. Comments by Members of the General Public**

### **2. Loudon Codes Enforcement Director – Jim Jenkins**

- A. A RESOLUTION AMENDING THE ZONING MAP OF LOUDON COUNTY, TENNESSEE, PURSUANT TO CHAPTER SEVEN, §13-7-105 OF THE TENNESSEE CODE ANNOTATED, TO REZONE APPROXIMATELY 14.4 ACRES FROM R-1, SUBURBAN RESIDENTIAL DISTRICT TO R-1 SUBURBAN RESIDENTIAL DISTRICT WITH PUD OVERLAY, LOUDON COUNTY TAX MAP 007, PARCELS 002.04, 002.05 LOCATED AT HICKORY CREEK RD., LOUDON COUNTY, TN, SITUATED IN THE 5<sup>th</sup> LEGISLATIVE DISTRICT
  
- B. A RESOLUTION AMENDING THE ZONING MAP OF LOUDON COUNTY, TENNESSEE, PURSUANT TO CHAPTER SEVEN, §13-7-105 OF THE TENNESSEE CODE ANNOTATED, TO REZONE APPROXIMATELY 38.1 ACRES FROM A-2, RURAL RESIDENTIAL DISTRICT TO A-1, AGRICULTURE-FORESTRY DISTRICT WITH T-1 OVERLAY, LOUDON COUNTY TAX MAP 056, PARCEL 181.00 LOCATED AT 5378 STEEKEE CREEK RD., LOUDON COUNTY, TN, SITUATED IN THE 4<sup>th</sup> LEGISLATIVE DISTRICT

### **3. Mayor – Buddy Bradshaw**

- A. Boards & Committees
  - 1. Library Board – Sandi Jorgensen was recommended for appointment to the Loudon County Library Board of Directors / 3 year term - ending June 30, 2023
  - 2. Library Board – Barry Baker was recommended for appointment to the Ocoee River Regional Library Board / 3 year term - ending June 30, 2023
- B. Animal Shelter Updates

### **4. Economic Development Director – Jack Qualls**

- A. Request Annual ThreeStar Fiscal Confirmation Letter

### **5. Commissioner - Bill Satterfield**

- A. Discuss building permits in established subdivisions with covenants

### **6. Commissioner – Gary Whitfield**

- A. Luttrell voting center

### **7. Commissioner – Van Shaver**

- A. Continued discussion of EDA funding, Equal Pay for EDA

### **8. Director of Accounts & Budgets – Tracy Blair**

- A. Budget Recommendations

RESOLUTION \_\_\_\_\_

**A RESOLUTION AMENDING THE ZONING MAP OF LOUDON COUNTY, TENNESSEE, PURSUANT TO CHAPTER SEVEN, §13-7-105 OF THE TENNESSEE CODE ANNOTATED, TO REZONE APPROXIMATELY 14.4 ACRES FROM R-1, SUBURBAN RESIDENTIAL DISTRICT TO R-1 SUBURBAN RESIDENTIAL DISTRICT WITH PUD OVERLAY, LOUDON COUNTY TAX MAP 007, PARCELS 002.04, 002.05 LOCATED AT HICKORY CREEK RD., LOUDON COUNTY, TN, SITUATED IN THE 5<sup>th</sup> LEGISLATIVE DISTRICT**

WHEREAS, the Loudon County Commission, in accordance with Chapter Seven, §13-7-105 of the Tennessee Code Annotated, may from time to time, amend the number, shape, boundary, area or any regulation of or within any district or districts, or any other provision of any zoning resolution, and

WHEREAS, the Regional Planning Commission has forwarded a recommendation regarding the amendment to the Zoning Map of Loudon County, Tennessee,

WHEREAS, a notice of public hearing and a description of the resolution appeared in the Loudon County newspaper, the News Herald on May 27, 2020 consistent with the provisions of Tennessee Code Annotated, §13-7-105, and

NOW, THEREFORE, BE IT RESOLVED by the Loudon County Commission that the Zoning Map of Loudon County, Tennessee be amended as follows:

Located at Hickory Creek Rd. situated in the 5<sup>th</sup> Legislative District, referenced by Tax Map 007, Parcels 002.04, and 002.05 be rezoned from R-1, Suburban Residential District to R-1, Suburban Residential District with Planned Unit Development (PUD) overlay 2.5 units per acre, as shown on the attached illustration; said illustration being part of this Resolution.

BE IT FINALLY RESOLVED, that this Resolution shall take effect immediately, the public welfare requiring it.

\_\_\_\_\_  
ATTEST

\_\_\_\_\_  
LOUDON COUNTY CHAIRMAN

DATE: \_\_\_\_\_

\_\_\_\_\_  
APPROVED: LOUDON COUNTY MAYOR

The votes on the question of approval of this Resolution by the Planning Commission are as follows:

APPROVED: 9

DISAPPROVED: 0

Paula G. McNew  
ATTEST: SECRETARY LOUDON COUNTY  
REGIONAL PLANNING COMMISSION

Dated: 5-28-2020

RESOLUTION NO. \_\_\_\_\_

ILLUSTRATION ATTACHMENT

REZONE APPROXIMATELY 14.4 ACRES FROM R-1, SUBURBAN RESIDENTIAL DISTRICT TO R-1, SUBURBAN RESIDENTIAL DISTRICT WITH PUD OVERLAY REFERENCED BY LOUDON COUNTY TAX MAP 007, PARCELS 002.04 & 002.05 LOCATED AT HICKORY CREEK LOUDON COUNTY, TN, SITUATED IN THE 5<sup>TH</sup> LEGISLATIVE DISTRICT



RESOLUTION \_\_\_\_\_

**A RESOLUTION AMENDING THE ZONING MAP OF LOUDON COUNTY, TENNESSEE, PURSUANT TO CHAPTER SEVEN, §13-7-105 OF THE TENNESSEE CODE ANNOTATED, TO REZONE APPROXIMATELY 38.1 ACRES FROM A-2, RURAL RESIDENTIAL DISTRICT TO A-1, AGRICULTURE-FORESTRY DISTRICT WITH T-1 OVERLAY, LOUDON COUNTY TAX MAP 056, PARCEL 181.00 LOCATED AT 5378 STEEKEE CREEK RD., LOUDON COUNTY, TN, SITUATED IN THE 4<sup>th</sup> LEGISLATIVE DISTRICT**

WHEREAS, the Loudon County Commission, in accordance with Chapter Seven, §13-7-105 of the Tennessee Code Annotated, may from time to time, amend the number, shape, boundary, area or any regulation of or within any district or districts, or any other provision of any zoning resolution, and

WHEREAS, the Regional Planning Commission has forwarded a recommendation regarding the amendment to the Zoning Map of Loudon County, Tennessee,

WHEREAS, a notice of public hearing and a description of the resolution appeared in the Loudon County newspaper, the News Herald on May 27, 2020 consistent with the provisions of Tennessee Code Annotated, §13-7-105, and

NOW, THEREFORE, BE IT RESOLVED by the Loudon County Commission that the Zoning Map of Loudon County, Tennessee be amended as follows:

Located at 5378 Steekee Creek Rd. situated in the 4<sup>th</sup> Legislative District, referenced by Tax Map 056, Parcel 181.00 be rezoned from A-2, Rural Residential District to A-1, Agriculture-Forestry District with T-1, Telecommunications overlay as shown on the attached illustration; said illustration being part of this Resolution.

BE IT FINALLY RESOLVED, that this Resolution shall take effect immediately, the public welfare requiring it.

\_\_\_\_\_  
ATTEST

\_\_\_\_\_  
LOUDON COUNTY CHAIRMAN

DATE: \_\_\_\_\_

\_\_\_\_\_  
APPROVED: LOUDON COUNTY MAYOR

The votes on the question of approval of this Resolution by the Planning Commission are as follows:

APPROVED:     9    

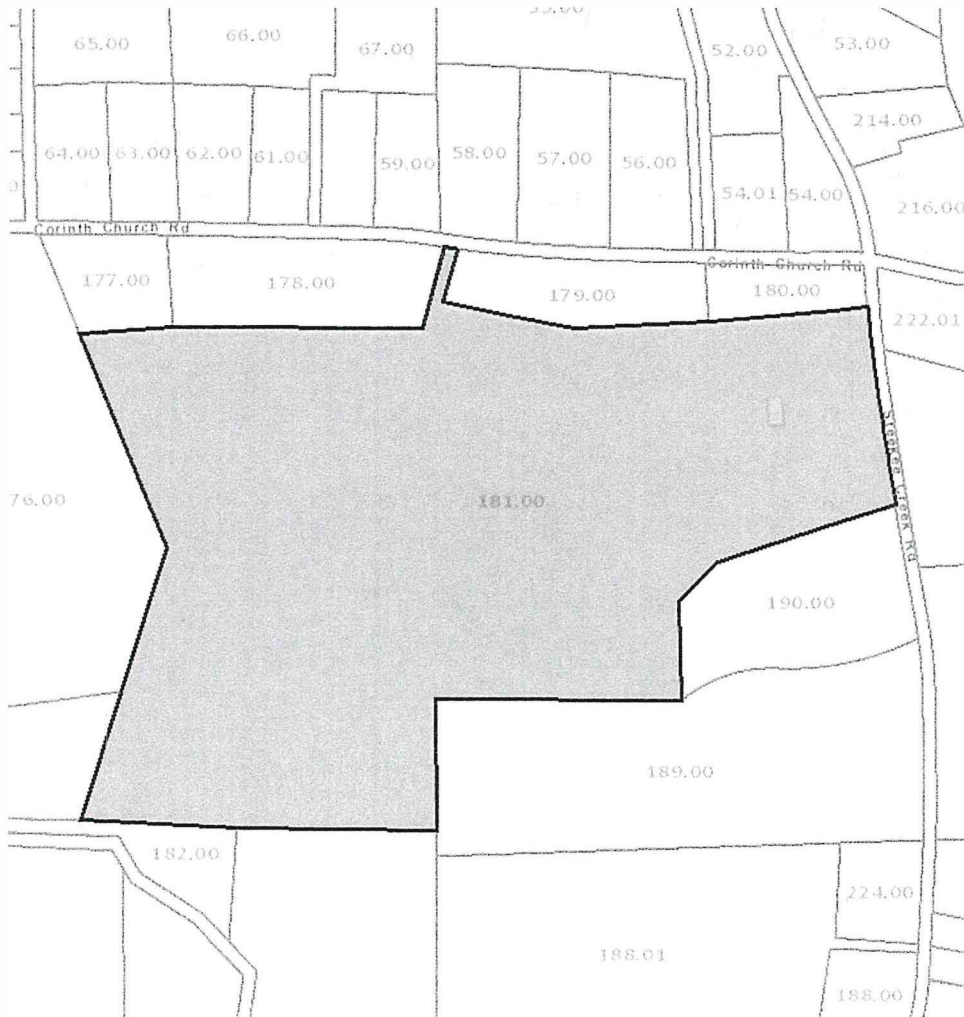
DISAPPROVED:     0    

*Paula G. Medow*  
\_\_\_\_\_  
ATTEST: SECRETARY LOUDON COUNTY  
REGIONAL PLANNING COMMISSION  
Dated: 5-28-2020

RESOLUTION NO. \_\_\_\_\_

ILLUSTRATION ATTACHMENT

REZONE APPROXIMATELY 38.1 ACRES FROM A-2, RURAL RESIDENTIAL DISTRICT TO A-1, AGRICULTURE-FORESTRY RESIDENTIAL DISTRICT WITH T-1, TELECOMMUNICATIONS OVERLAY REFERENCED BY LOUDON COUNTY TAX MAP 056, PARCELS 181.00 LOCATED AT 5378 STEEKEE CREEK., LOUDON COUNTY, TN, SITUATED IN THE 4<sup>TH</sup> LEGISLATIVE DISTRICT



(Letterhead of the County)

Date:

**Fiscal Strength and Efficient Government Fiscal Confirmation Letter  
ThreeStar Program requirements**

This document confirms that \_\_\_\_\_ County has taken the following actions in accordance with the requirements of the ThreeStar Program:

- The county mayor has reviewed with the county commission at an official meeting the county's debt management policy that is currently on file with the Comptroller of the Treasury Office. The purpose of this requirement is to ensure that local elected officials are aware and knowledgeable of the county's debt management policy.
- The county mayor and county commission acknowledge that an annual cash flow forecast must be prepared and submitted to the Comptroller prior to issuance of debt. The purpose of this requirement is to ensure elected officials are aware that prior to the issuance of debt the county must go through the process of assessing the county's cash flow. This is done to evaluate the county's finances and confirm that sufficient revenues are available to cover additional debt service associated with the proposed issuance of debt.
- The county mayor and county commission acknowledge that all county offices are required to have documented system of internal controls (TCA Section 9-18-102).

-----  
**Debt Management Policy**

This is an acknowledgement that *the Debt Management Policy of \_\_\_\_\_ County is on file with the Office of the Comptroller of the Treasury* and was reviewed with the members of the \_\_\_\_\_ County Commission present at the meeting held on the \_\_\_ day of \_\_\_\_\_.

Minutes of this meeting have been included as documentation of this agenda item.

**Annual Cash Flow Forecast**

This is an acknowledgement that *prior to the issuance of debt an annual cash flow forecast was prepared for the appropriate fund and submitted to the Comptroller's office* and was reviewed with the members of the \_\_\_\_\_ County Commission present at the meeting held on the \_\_\_ day of \_\_\_\_\_.

Minutes of this meeting have been included as documentation of this agenda item.

**Confirmation of Documented Internal Controls Requirement**

This is an acknowledgement that \_\_\_\_\_ County Commission understands that all county offices are required to develop a documented system of internal control for all offices, funds, and departments under the authority and administration of the elected officials of \_\_\_\_\_ County in compliance with Section 9-18-102 (a), Tennessee Code Annotated.

Acknowledged this \_\_\_\_\_ day of \_\_\_\_\_, 20\_\_.

\_\_\_\_\_  
County Mayor/Executive Name

\_\_\_\_\_  
Signature