

LOUDON COUNTY COMMISSION
LOUDON COUNTY, TENNESSEE
Monday, April 6, 2020
Courthouse Annex Building
6 P.M.

REGULAR COMMISSION MEETING

The March 16, 2020 County Commission workshop was re-schedule to be held prior to the April 6, 2020 County Commission Meeting. The workshop was adjourned and the County Commission Meeting began immediately following. This format was due to COVID-19 outbreak. Commission Chairman Henry Cullen asked that the meeting move swiftly to cover the issues and business presented due to the circumstances that we are operating under.

(1) Public Hearing

A Resolution Amending the Zoning Map of Loudon County, Tennessee, Pursant to chapter seven, § 13-7-105 of the Tennessee Code Annotated, to rezone approximately 26.0 acres from R-1, suburban residential district to C-2 general commercial district, Loudon County tax map 007, Parcels 002.02,002.03,04.00,002.05 Located at Hickory Creek Road., Loudon County, TN, situated in the 5th Legislative District

A Resolution Amending the Zoning Map of Loudon County, Tennessee, Pursant to chapter seven, § 13-7-105 of the Tennessee Code Annotated, to rezone approximately 4.7 acres from R-1, Suburban residential district to C-2 general commercial district, Loudon County tax map 007, Parcel 109.01 Located at 12272 Hwy. 70 East, Loudon County, TN, situated in the 5th Legislative District

A Resolution Amending the Zoning Map of Loudon County, Tennessee, Pursant to chapter seven, § 13-7-105 of the Tennessee Code Annotated, to rezone approximately 17.3 acres from A-1/C-2, Agriculture – Forestry district/general commercial district to M-1, General Industrial District, Loudon County Tax Map 004, Parcel 004.00 Located at 14542 El Camino Ln., Loudon County, TN, situated in the 5th Legislative district

(2) Opening of Meeting

BE IT REMEMBERED that the Board of Commissioners of Loudon County convened in regular session in Loudon, Tennessee on the 6th day of April 2020.

Commission Chairman, Henry Cullen called the meeting to order at 5:55 pm.

Commissioner David Meers opened the County Commission Meeting by leading the Pledge of Allegiance to the Flag of the United States of America, and then gave the invocation.

(3) Roll Call

Upon Roll Call, the following Commissioners were present: **Kelly Brewster, David Meers, Julia Hurley, Matthew Tinker, Bill Satterfield, Gary Whitfield, Henry Cullen, Harold Duff, Van Shaver, and Adam Waller (10)**

Thereupon **Chairman Cullen** announced the presence of a quorum.

Also present was the **Honorable Mayor, Buddy Bradshaw** and **Chief Deputy Clerk Tammie Wampler**. **Director of Accounts and Budgets, Tracy Blair** was absent.

(4) Agenda Adoption

Chairman Cullen requested that the April 06, 2020 Agenda be adopted. **Commissioner Shaver** made the motion to adopt the agenda with the following items removed: **Mayor Bradshaw / Boards & Committees – Equalization Board & Planning Commission -5th District. Purchasing Director – Susan Huskey / Multi-Year Copier Contracts for Lenoir City Library, Employee**

Benefits and Loudon County Mayors Office. **Commissioner Shaver** / Discussion of Planning & Codes Office. **Commissioner Waller** seconded the motion.

Upon Voice Vote, the motion **PASSED** 10-1. **Commissioner Brewster** was opposed. **Commissioner Brewster** stated that she requested that Public Hearing item A regarding Avalon be removed to a later date.

(5) Minutes
Approved

Chairman Cullen requested that the March 2, 2020 Commission Meeting Minutes be accepted. **Commissioner Meers** seconded the motion.

Upon Voice Vote, the motion **PASSED** unanimously.

(6) General Public
Comments

Chairman Cullen opened the floor for the General Public Comments that were not heard at the workshop or for additional comments at this time. The following people spoke at the workshop due to the way meetings were held due to COVID-19:

1. **Bill Bass** – Re-zoning Hickory Creek Road
2. **Lynn Greer**- Re-Zoning issue
3. **Darrell Cavin** – Re-zoning @ 12272 Hwy 70 East

The additional Public Comments were made at the Commission Meeting

4. **Darrell Cavin** – Re-Zoning @ 12272 Hwy 70 East
5. **Pat Hunter** - Avalon

Chairman Cullen closed the floor for the General Public Comments.

(7) Boards &
Committees

Mayor Buddy Bradshaw presented to commission the following regarding Boards & Committees: Recommendation was made by **Mayor Bradshaw** that **Commission Chairman Henry Cullen** be the replacement to the TRDA board in **Mr. Gene Lamberts** place as he is stepping off the board. TRDA Board will prepare at a later date a proclamation for **Mr. Gene Lambert** for his service to the board. As noted in the adoption of the agenda items 6A (1) Equalization Board and item 6A (3) Planning Commission 5th district were removed at this time.

Commissioner Shaver made a motion to approve the resolution. **Commissioner Waller** seconded the motion.

Upon Voice Vote, the motion **PASSED** unanimously. **RESOLUTION 040620-A**

(8) Re-Zone
Hickory Creek
Road

Loudon County Codes Enforcement Director – Jim Jenkins presented to commission a resolution amending the **Zoning Map of Loudon County, Tennessee**, Pursant to chapter seven, § 13-7-105 of the **Tennessee Code Annotated**, to rezone approximately 26.0 acres from R-1, suburban residential district to C-2 general commercial district, Loudon County tax map 007, Parcels 002.02,002.03,04.00,002.05 Located at Hickory Creek Road., Loudon County, TN, situated in the 5th Legislative District.

Commissioner Shaver made a motion to not approve the Planning Commission's recommendation to re-zone any of these requested properties. **Commissioner Duff** seconded the motion. **Commissioner Shaver** made a motion to deny the Planning Commission meeting looking for Aye votes. **Commissioner Duff** seconded the motion.

Upon Voice Vote the motion **PASSED** 7 / 3 Zoning Request **FAILS**

Opposed were **Commissioner Meers**, **Commissioner Hurley** and **Commissioner Tinker**

RESOLUTION 040620-B

(9) Re-Zone
12272 Hwy 70 East

Loudon County Codes Enforcement Director – Jim Jenkins presented to commission a resolution amending the Zoning Map of Loudon County, Tennessee, Pursant to chapter seven, § 13-7-105 of the Tennessee Code Annotated, to rezone approximately 4.7 acres from R-1, Suburban residential district to C-2 general commercial district, Loudon County tax map 007, Parcel 109.01 Located at 12272 Hwy. 70 East, Loudon County, TN, situated in the 5th Legislative District.

Commissioner Shaver made a motion that the resolution be approved contingent on the entrance being from Kevin Lane. **Commissioner Duff** seconded the motion.

Upon Voice Vote the motion **PASSED** unanimously. **RESOLUTION 040620-C**

(10) Re-Zone
14542 El Camino
Lane

Loudon County Codes Enforcement Director – Jim Jenkins presented to commission a resolution amending the Zoning Map of Loudon County, Tennessee, Pursant to chapter seven, § 13-7-105 of the Tennessee Code Annotated, to rezone approximately 17.3 acres from A-1/C-2, Agriculture – Forestry district/general commercial district to M-1, General Industrial District Loudon County Tax Map 004, Parcel 004.00 Located at 14542 El Camino Ln., Loudon County, TN, situated in the 5th Legislative district.

Commissioner Shaver made a motion that the resolution be approved. **Commissioner Duff** seconded the motion.

Upon Voice Vote the motion **PASSED** unanimously. **RESOLUTION 040620-D**

(11) Pilot CNC
Fabrication /
Manufacturing

Economic Development Director – Jack Qualls request was presented by **Mayor Buddy Bradshaw** for the PILOT (Payment in Lieu of Taxes)– CNC Fabrication / Manufacturing. **Commissioner Tinker** made a motion to approve the PILOT. **Commissioner Hurley** seconded the motion.

Upon Roll Call Vote the following commissioners voted **AYE**:
Meers, Hurley, Tinker, Satterfield, Whitfield, Duff, Waller, Brewster (8)

The following commissioners voted **NAY**: **Cullen, Shaver (2)**

The motion **PASSED** 8/2 **EXHIBIT 040620-E**

(12) Budget
Recommendations
/ Libraries

Director of Accounts and Budgets, Tracy Blair's budget recommendations were presented by **Mayor Buddy Bradshaw** in her absence. The motion was made by **Commissioner Shaver** to approve the following recommendations made by the budget committee:

Consideration of recommendation to approve a resolution accepting a monetary bequest for the benefit of Loudon County Library Board for Lenoir City Library

Consideration of recommendation to approve application/acceptance of the following Pettway Grants; no matching funds required:

- A. Lenoir City Library - \$ 3,000
- B. Loudon Library - \$ 2,500
- C. Greenback Library - \$ 3,300 **RESOLUTION 040620-F**

Consideration of distribution of revenue from DelConca PILOT

(13) Budget
Recommendations
– DelConca Pilot

Consideration of recommendation to approve amendments in the following funds:

- A. County General Fund 101 **EXHIBIT 040620-G**
- B. Highway Department Fund 131 **EXHIBIT 040620-H**
- C. General Capital Projects Fund 171 **EXHIBIT 040620-I**

(14) Budget
Recommendations
Funds 101,
131,171

Commissioner Satterfield seconded the motion.

Upon Roll Call Vote the following commissioners voted **AYE**:
Hurley, Tinker, Satterfield, Whitfield, Cullen, Duff, Shaver, Waller, Brewster, Meers

NOTE: Commissioner Brewster and Commissioner Tinker both gave their conflict of interest statements before voting.

The recommendations **PASSED**.

(15) Monthly
Reports

Mayor Buddy Bradshaw also requested on the behalf of **Director of Accounts and Budgets, Tracy Blair** that the record reflect that the distribution of the following reports:

- A. Summary Financial Report – March 2020 **EXHIBITS 040620-J**
- B. Budget Committee Minutes – February 2020 **EXHIBITS 040620-K**

(16) Bonds &
Notaries

Commissioner Meers made a motion that was seconded by **Commissioner Waller** to approve the following notaries and bonds:

Deborah R. Baker, Yurisan Cornejo, Callie Davis, Sharon A. Dustin, Romania Hensley, Jackie Sue Macdonald, Heather Manning, Danyelle L. McLain, M'Recia Oody, Harvey Sproul, Nancy Carol Willett, Mark W Williams

Upon Voice Vote, the motion **PASSED** unanimously. **EXHIBITS 040620-L**

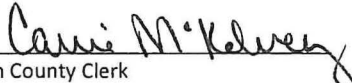
(17) Adjournment

There being no further business, a motion being duly made by **Commissioner Shaver** seconded by **Commissioner Brewster** the March 2, 2020 County Commission Meeting stand adjourned at 6:24 pm.

NOTE: **Mayor Bradshaw** made an announcement that the next workshop meeting may be electronic thru the Go to Meeting App. **Commission Chairman Henry Cullen** stated that we were meeting under difficult circumstance. He also stated that he appreciated everyone's comments and concerns and reiterated what **Mayor Bradshaw** said about the May workshop possibly being held electronically.



Loudon County Commission Chairman

Attest: 

Loudon County Clerk



Loudon County Mayor

Loudon County Commission

Resolution 040620-A

Boards & Committees

TRDA Board

LOUDON COUNTY COMMISSION
Resolution 040620-A

RESOLUTION APPROVING OR ACKNOWLEDGING BOARD OR
COMMITTEE APPOINTMENT BY COUNTY MAYOR

WHEREAS, by statute and/or intergovernmental agreement and/or County Procedural Regulations, the County Mayor has the authority to make certain committee and board appointments; and

WHEREAS, appointments are necessary and/or desirable at this time with a 6 year rotation term; and

WHEREAS, the County Mayor appoints the following members of the:

TRDA BOARD OF DIRECTORS

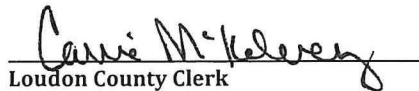
| <u>Appointee</u> | <u>Term Expiration</u> |
|------------------|------------------------|
| Henry Cullen | April 2026 |

NOW, THEREFORE, BE IT RESOLVED that the Loudon County Commission, meeting in regular session, assembled this 6th day of April, 2020 hereby approves or acknowledges (as appropriate) the said appointments.



Loudon County Commission Chairman

ATTEST:



Loudon County Clerk



Loudon County Mayor

The remaining members and their continuing expiration terms for said board or committee are as follows:

| <u>Appointee</u> | <u>Term Expiration</u> |
|------------------|------------------------|
| Buddy Bradshaw | August 2020 |
| Jimmy Matlock | August 2020 |

Loudon County Commission

Resolution 040620-B

Rezoning Resolution

Located at Hickory Creek Road

(FAILED)

RESOLUTION 040620-B

A RESOLUTION AMENDING THE ZONING MAP OF LOUDON COUNTY, TENNESSEE, PURSUANT TO CHAPTER SEVEN, §13-7-105 OF THE TENNESSEE CODE ANNOTATED, TO REZONE APPROXIMATELY 26.0 ACRES FROM R-1, SUBURBAN RESIDENTIAL DISTRICT TO C-2 GENERAL COMMERCIAL DISTRICT, LOUDON COUNTY TAX MAP 007, PARCELS 002.02, 002.03, 04.00, 002.05 LOCATED AT HICKORY CREEK RD., LOUDON COUNTY, TN, SITUATED IN THE 5th LEGISLATIVE DISTRICT

WHEREAS, the Loudon County Commission, in accordance with Chapter Seven, §13-7-105 of the Tennessee Code Annotated, may from time to time, amend the number, shape, boundary, area or any regulation of or within any district or any other provision of any zoning resolution, and

WHEREAS, the Register has forwarded a recommendation regarding the amendment to the Zoning Map of Loudon County, Tennessee,

WHEREAS, a notice of publication of the resolution appeared in the Loudon County newspaper, the News Herald, consistent with the provisions of Tennessee Code Annotated, §13-7-105, and

NOW, THEREFORE, BE IT RESOLVED, that the Loudon County Commission that the Zoning Map of Loudon County, Tennessee be amended

Located at Hickory Creek Rd. situated in the Parcel 002.02, 002.03, 002.04, and 002.05 be rezoned to C-2, General Commercial District as shown on the attached illustration being part of this Resolution.

referenced by Tax Map 007, Suburban Residential District to C-2, General Commercial District as shown on the attached illustration being part of this Resolution.

BE IT FINALLY RESOLVED, that this Resolution, immediately, the public welfare requiring it.

ATTEST

LOUDON COUNTY CHAIRMAN

DATE: _____

APPROVED: LOUDON COUNTY MAYOR

The votes on the question of approval of this Resolution by the Planning Commission are as follows:

APPROVED: 7

DISAPPROVED: 3

Pamela G. McLean

ATTEST: SECRETARY LOUDON COUNTY
REGIONAL PLANNING COMMISSION

Dated: 2-25-2020

RESOLUTION NO. 040620-B

ILLUSTRATION ATTACHMENT

REZONE APPROXIMATELY 19.7 ACRES FROM R-1, SUBURBAN RESIDENTIAL DISTRICT TO C-2, GENERAL COMMERCIAL DISTRICT REFERENCED BY LOUDON COUNTY TAX MAP 007, PARCELS 002.02, 002.03, 002.04, 002.05 LOCATED AT HICKORY CREEK RD., LOUDON COUNTY, TN, SITUATED IN THE 5TH LEGISLATIVE DISTRICT



Loudon County Commission

Resolution 040620-C

Rezoning Resolution

Located at 12272 Hwy 70 East

RESOLUTION 040620-C

A RESOLUTION AMENDING THE ZONING MAP OF LOUDON COUNTY, TENNESSEE, PURSUANT TO CHAPTER SEVEN, §13-7-105 OF THE TENNESSEE CODE ANNOTATED, TO REZONE APPROXIMATELY 4.7 ACRES FROM R-1, SUBURBAN RESIDENTIAL DISTRICT TO C-2 GENERAL COMMERCIAL DISTRICT, LOUDON COUNTY TAX MAP 007, PARCEL 109.01 LOCATED AT 12272 HWY. 70 EAST, LOUDON COUNTY, TN, SITUATED IN THE 5th LEGISLATIVE DISTRICT

WHEREAS, the Loudon County Commission, in accordance with Chapter Seven, §13-7-105 of the Tennessee Code Annotated, may from time to time, amend the number, shape, boundary, area or any regulation of or within any district or districts, or any other provision of any zoning resolution, and

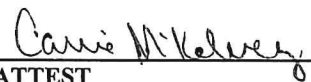
WHEREAS, the Regional Planning Commission has forwarded a recommendation regarding the amendment to the Zoning Map of Loudon County, Tennessee,

WHEREAS, a notice of public hearing and a description of the resolution appeared in the Loudon County newspaper, the News Herald on March 4, 2020, consistent with the provisions of Tennessee Code Annotated, §13-7-105, and

NOW, THEREFORE, BE IT RESOLVED by the Loudon County Commission that the Zoning Map of Loudon County, Tennessee be amended as follows:

Located at 12272 Hwy. 70 East, situated in the 5th Legislative District, referenced by Tax Map 007, Parcel 109.01 be rezoned from R-1, Suburban Residential District to C-2, General Commercial District as shown on the attached illustration; said illustration being part of this Resolution.

BE IT FINALLY RESOLVED, that this Resolution shall take effect immediately, the public welfare requiring it.


ATTEST


LOUDON COUNTY CHAIRMAN


APPROVED: LOUDON COUNTY MAYOR

DATE: _____

The votes on the question of approval of this Resolution by the Planning Commission are as follows:

APPROVED: 6

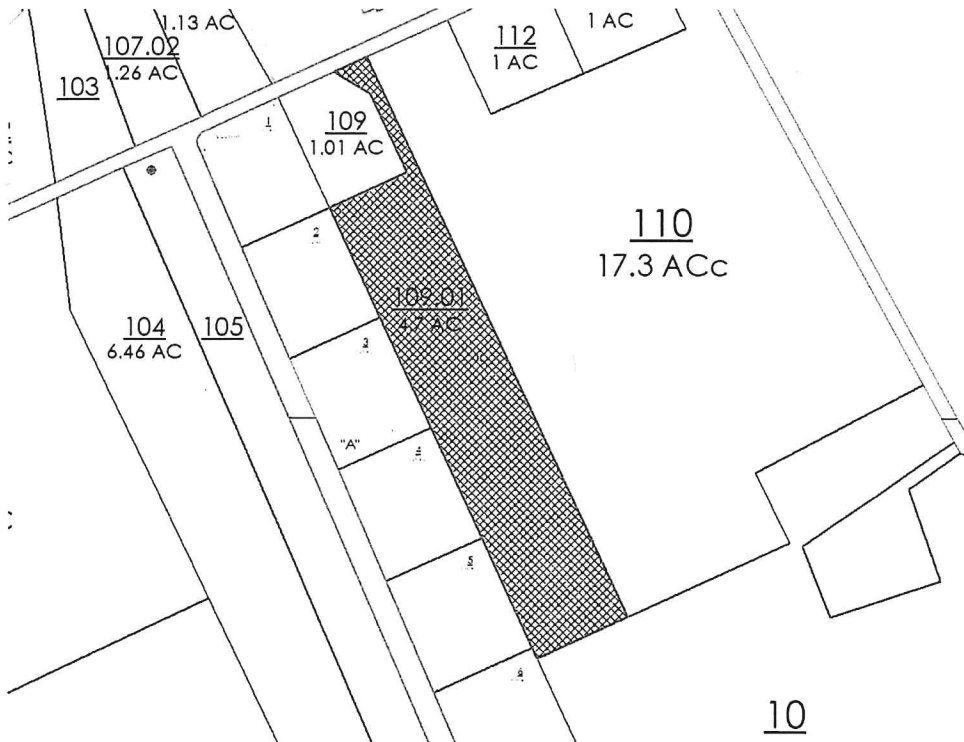
DISAPPROVED: 4


ATTEST: SECRETARY LOUDON COUNTY
REGIONAL PLANNING COMMISSION
Dated: 2-25-2020

RESOLUTION NO. 040620-C

ILLUSTRATION ATTACHMENT

REZONE APPROXIMATELY 4.7 ACRES FROM R-1, SUBURBAN RESIDENTIAL DISTRICT TO C-2, GENERAL COMMERCIAL DISTRICT REFERENCED BY LOUDON COUNTY TAX MAP 007, PARCEL 109.01 LOCATED AT 12272 HWY. 70, LENOIR CITY, TN, SITUATED IN THE 5TH LEGISLATIVE DISTRICT



Loudon County Commission

Resolution 040620-D

Rezoning Resolution

Located at 14542 El Camino Lane

RESOLUTION 040620-0

A RESOLUTION AMENDING THE ZONING MAP OF LOUDON COUNTY, TENNESSEE, PURSUANT TO CHAPTER SEVEN, §13-7-105 OF THE TENNESSEE CODE ANNOTATED, TO REZONE APPROXIMATELY 17.3 ACRES FROM A-1/C-2, AGRICULTURE-FORESTRY DISTRICT/GENERAL COMMERCIAL DISTRICT TO M-1, GENERAL INDUSTRIAL DISTRICT, LOUDON COUNTY TAX MAP 004, PARCEL 004.00 LOCATED AT 14542 EL CAMINO LN., LOUDON COUNTY, TN, SITUATED IN THE 5th LEGISLATIVE DISTRICT

WHEREAS, the Loudon County Commission, in accordance with Chapter Seven, §13-7-105 of the Tennessee Code Annotated, may from time to time, amend the number, shape, boundary, area or any regulation of or within any district or districts, or any other provision of any zoning resolution, and

WHEREAS, the Regional Planning Commission has forwarded a recommendation regarding the amendment to the Zoning Map of Loudon County, Tennessee,

WHEREAS, a notice of public hearing and a description of the resolution appeared in the Loudon County newspaper, the News Herald on March 4, 2020 consistent with the provisions of Tennessee Code Annotated, §13-7-105, and

NOW, THEREFORE, BE IT RESOLVED by the Loudon County Commission that the Zoning Map of Loudon County, Tennessee be amended as follows:

Located at 14542 El Camino Ln., situated in the 5th Legislative District, referenced by Tax Map 004, Parcel 004.00 be rezoned from A-1/C-2. Agriculture-Forestry District/General Commercial District, to M-1, General Industrial District as shown on the attached illustration; said illustration being part of this Resolution.

BE IT FINALLY RESOLVED, that this Resolution shall take effect immediately, the public welfare requiring it.

Carrie McKeever
ATTEST

[Signature]
LOUDON COUNTY CHAIRMAN

[Signature]
APPROVED: LOUDON COUNTY MAYOR

DATE: _____

The votes on the question of approval of this Resolution by the Planning Commission are as follows:

APPROVED: 10

DISAPPROVED: 0

Parvula G. McNew
ATTEST: SECRETARY LOUDON COUNTY
REGIONAL PLANNING COMMISSION
Dated:

RESOLUTION NO. 040620-D

ILLUSTRATION ATTACHMENT

REZONE APPROXIMATELY 17.3 ACRES FROM A-1/C-2, AGRICULTURE-FORESTRY DISTRICT/GENERAL COMMERCIAL DISTRICT TO M-1, GENERAL INDUSTRIAL DISTRICT REFERENCED BY LOUDON COUNTY TAX MAP 004, PARCEL 004.00 LOCATED AT 14542 EL CAMINO LN.,
LOUDON COUNTY, TN, SITUATED IN THE 5TH LEGISLATIVE DISTRICT



Loudon County Commission

Exhibit 040620-E

Pilot

***CNC Fabrication /
Manufacturing***

***Loudon County Commission
EXHIBIT 040620-E***

PILOT Summary for Project Strength –CNC Fabrication / Manufacturing

Current Employees

Knoxville HQ – 10

Monroe County – 40

Loudon County - 50

Capital Investment (Next 3 Years)

Personal Property: \$9 million

Real Property: \$7 million

Job Creations: 50 new positions (average salary of \$46,000.00)

PILOT - 5 year term at 50 % tax abatement

The PILOT would be contingent on the building being purchased. The PILOT documentation would also contain language about job creation and “clawback” provisions (equaling \$792.00 collected annually per (new) position not created) to protect the County’s investment.

PILOT – includes a 5 year-term at fifty percent abatement combined on both Real Property and Personal Property to be collected by Loudon County in the amount of (\$39,608.00 annually)

Current Loudon County Taxes generated at proposed location

2019 Building / Land = \$ 20,637.00 annually

Loudon County Commission

Resolution 040620-F

***Monetary Bequest for Benefit
of Loudon County Library
Board for Lenoir City Library***

Loudon County Commission
RESOLUTION 040620-F

RESOLUTION ACCEPTING A MONETARY BEQUEST FOR THE
BENEFIT OF THE LOUDON COUNTY LIBRARY BOARD AND
AUTHORIZING THE LOUDON COUNTY MAYOR TO EXECUTE
THE NECESSARY DOCUMENTS FOR ITS RECEIPT

WHEREAS, Loudon County (the "County") is generally authorized to accept and receive gifts and donations of money, intangible personal property, tangible personal property, and real property pursuant to Tenn. Code Ann. §5-8-101(b), and is specifically authorized to accept conditional or restrictive gifts by a majority vote of the County Board of Commissioners as long as the gift is used by the County subject to its terms; and

WHEREAS, the Estate of Lucille P. Norris has made a bequest of Fifty-eight Thousand Eight Hundred Ninety-nine Dollars and Sixty-four Cents Dollars (\$58,899.64) for the Lenoir City Library, a public facility managed and operated by the County; and

WHEREAS, the County Board of Commissioners is of the opinion that the acceptance of such bequest is in the best interest of the County; and

WHEREAS, the County Board of Commissioners has authorized the County Mayor to execute all documents necessary for the receipt of the bequest, including, but not limited to, the Receipt of Beneficiary, attached hereto as Exhibit A.

NOW THEREFORE, BE IT RESOLVED, by the Loudon County Board of Commissioners, in regular session assembled this _____ day of _____, 2020, that the above-described bequest is hereby accepted by the County and the County Mayor is hereby authorized to execute the necessary documents for the release and acceptance of the funds.

BE IT FURTHER RESOLVED, this resolution shall take effect immediately, the public welfare requiring it.

ATTEST:

Carrie McKelvey, County Clerk

APPROVED:

Rollen (Buddy) Bradshaw, Mayor

Henry Cullen, Chairman, Loudon County, Tennessee
Board of Commissioners

IN THE PROBATE COURT FOR LOUDON COUNTY, TENNESSEE

IN THE MATTER OF:

CASE NO: 5923

THE ESTATE OF: Lucille P. Norris, deceased

RECEIPT AND WAIVER

I, Rollen (Buddy) Bradshaw, Loudon County Mayor, on behalf of **the LENOIR CITY LIBRARY**, being a will or intestate beneficiary in the above decedent's estate, do hereby acknowledge receipt from Leslie Allen Grayson, Personal Representative of the Estate of Lucille P. Norris, the following assets given to me in full and final distribution of said estate pursuant to the Last Will and Testament of the decedent. I acknowledge full and complete satisfaction of all my claims against said Personal Representative on account of any distribution from said Estate of Lucille P. Norris and discharge said Personal Representative from any further or other liability to the LENOIR CITY LIBRARY on account of any distribution from the Estate of Lucille P. Norris and on account of any claims the LENOIR CITY LIBRARY may have against said estate.

Asset: Funds in the amount of \$58,899.64, representing 10% and an additional 1/6th of 10% of the residuary Estate.

The undersigned further acknowledges and waives any further notice of final settlement of this estate and excuses the Personal Representative from any and all court accountings. The undersigned further acknowledges potential personal liability under *Tennessee Code Annotated* § 30-2-307(a)(2), if applicable.

Signed this the ____ day of _____, 2020, UNDER PENALTY OF PERJURY.

Rollen (Buddy) Bradshaw, Authorized
Representative and Signatory for the
Lenoir City Library

State of Tennessee
County of Loudon

Personally appeared before me, the undersigned Notary Public for the above referenced county and state, Rollen (Buddy) Bradshaw, Authorized Representative and Signatory for the Lenoir City Library, who has proved to me on the basis of satisfactory evidence of who he/she is and who acknowledged that he/she executed the within instrument for the purposes therein contained.

Witness my hand and official seal, on this the ____ day of _____, 2020.

Notary Public

My Commission Expires: _____

Loudon County Commission

Exhibit 040620-G

***Budget Recommendation –
County General
Fund 101***

Loudon County
County General Fund 101
Fiscal Year Ending June 30, 2020

| | A | B | C | D | E | F | G | H |
|-----|----------------|---|---|-----------|-----------|-----------|----------|--------------|
| 1 | | | General Fund 101 | | | | | |
| 2 | Account Number | | 4/1/2020 12:15 | 2019-2020 | 2019-2020 | Approved | Proposed | Proposed |
| 3 | | | | Org Bgt | Amds | Amded Bgt | Amds | Amded Budget |
| 4 | | | | | | | | |
| 150 | | | | | | | | |
| 151 | | | | | | | | |
| 152 | 43000 | | Charges for Current Services | | | | | |
| 153 | | | | | | | | |
| 154 | 43100 | | General Service Charges | | | | | |
| 155 | 43140 | | Zoning Studies | 0 | | 0 | | 0 |
| 156 | 43190 | | Other General Services Charges | | 35,000 | 35,000 | | 35,000 |
| 157 | 43190 FY 19 | | Other General Services Charges | 0 | 21,400 | 21,400 | (11,173) | 10,227 |
| 158 | | | | | | | | |
| 159 | | | Total General Services Charges | 0 | 56,400 | 56,400 | (11,173) | 45,227 |
| 160 | | | | | | | | |
| 161 | 43000 | | Fees | | | | | |
| 162 | 43350 | | Copy Fees | 0 | | 0 | | 0 |
| 163 | 43370 | | Telephone Commissions | 50,000 | | 50,000 | | 50,000 |
| 164 | 43370-FY18 | | Telephone Commissions | | | | | |
| 165 | 43380 | | Vending Machine Commissions | 0 | | 0 | | 0 |
| 166 | 43392 | | Data Processing Fee - Register | 21,000 | | 21,000 | | 21,000 |
| 167 | 43394 | | Data Processing Fee - Sheriff | 10,000 | | 10,000 | | 10,000 |
| 168 | 43395 | | Sex Offender Registration Fee - Sheriff | 3,000 | | 3,000 | | 3,000 |
| 169 | 43396 | | Data Processing Fee - County Clerk | 3,000 | | 3,000 | | 3,000 |
| 170 | 43399 | | Vehicle Registration Reinstatement Fee | 0 | | 0 | | 0 |
| 171 | | | | | | | | |
| 172 | | | Total Fees | 87,000 | 0 | 87,000 | 0 | 87,000 |
| 173 | | | | | | | | |
| 174 | | | Total Charges for Current Services | 87,000 | 56,400 | 143,400 | (11,173) | 132,227 |
| 175 | | | | | | | | |
| 176 | | | | | | | | |
| 177 | | | | | | | | |
| 178 | | | | | | | | |

Correction
[16Mar_06Apr2020]

Loudon County Commission
EXHIBIT 040620-G

Loudon County
County General Fund 101
Fiscal Year Ending June 30, 2020

| | A | B | C | D | E | F | G | H |
|-----|--------------------------------------|---|--|--|-----------|------------|----------|--------------|
| 1 | | | General Fund 101 | | | | | |
| 2 | Account Number | | 4/1/2020 12:15 | 2019-2020 | 2019-2020 | Approved | Proposed | Proposed |
| 3 | | | | Org Bgt | Amds | Amded Bgt | Amds | Amded Budget |
| 4 | | | | | | | | |
| 325 | | | | | | | | |
| 326 | 48000 | | Other Governments and Citizens | <div style="border: 1px solid black; padding: 2px;"> Contribution from BOE for SROs. See Expense 54110-716 [21Jan_03Feb2020] </div> | | | | |
| 327 | | | | | | | | |
| 328 | 48100 | | Other Governments | | | | | |
| 329 | 48110 | | Prisoner Board | 0 | | 0 | | 0 |
| 330 | 48130 | | Contributions | | 5,000 | 5,000 | (5,000) | 0 |
| 331 | 48130 SRO | | Contributions - From BOE for SROs | 0 | | 0 | 5,000 | 5,000 |
| 332 | 48130 LOANI | | Contributions - Loudon for Animal Shelter | 0 | | 0 | | 0 |
| 333 | 48130 LEANI | | Contributions - Lenoir City for Animal Shelter | 5,000 | | 5,000 | | 5,000 |
| 334 | 48140 | | Contracted Services/Agreements | | | 0 | | 0 |
| 335 | 48140 LOPLN | | Contracted Services/Loudon City Planning | 25,000 | | 25,000 | | 25,000 |
| 336 | 48140 LOPTX | | Contracted Services/Agreements | 0 | | 0 | | 0 |
| 337 | 48140 LEPTX | | Contracted Services/Agreements | 0 | | 0 | | 0 |
| 338 | 48140 PHCTY | | Contracted Services/Agreements | 0 | | 0 | | 0 |
| 339 | | | | 0 | | 0 | | 0 |
| 340 | | | | | | | | |
| 341 | | | Total Other Governments | 30,000 | 5,000 | 35,000 | 0 | 35,000 |
| 342 | | | | | | | | |
| 343 | | | | | | | | |
| 344 | 48600 | | Citizen Groups and Other | | | | | |
| 345 | 48610-DIVE | | Donations (Dive Team Resolution) | 0 | | 0 | 0 | 0 |
| 346 | 48610 - LUNCH | | Donations (Sr. Center Lunch Program) | 5,000 | | 5,000 | | 5,000 |
| 347 | 48610 SRCTR | | Donations - Sr Cntr | 11,000 | | 11,000 | | 11,000 |
| 348 | 48990 | | Other (HIDTA) | 0 | | 0 | | 0 |
| 349 | | | | | | | | |
| 350 | | | Total Citizens Groups and Other | 16,000 | 0 | 16,000 | 0 | 16,000 |
| 351 | | | | | | | | |
| 352 | | | | | | | | |
| 353 | Total Other Governments and Citizens | | | 46,000 | 5,000 | 51,000 | 0 | 51,000 |
| 354 | | | | | | | | |
| 355 | Total Revenues | | | 18,380,343 | 171,955 | 18,552,298 | (11,173) | 18,541,125 |
| 356 | | | | | | | | |

Loudon County
County General Fund 101
Fiscal Year Ending June 30, 2020

| | A | B | C | D | E | F | G | H |
|-----|--|---|---|------------|-----------|------------|----------|--------------|
| 1 | | | General Fund 101 | | | | | |
| 2 | Account Number | | 4/1/2020 12:15 | 2019-2020 | 2019-2020 | Approved | Proposed | Proposed |
| 3 | | | | Org Bgt | Amds | Amded Bgt | Amds | Amded Budget |
| 4 | | | | | | | | |
| 357 | 49000 | | <i>Other Sources</i> | | | | | |
| 358 | 49500 | | Other Loans Issued | 0 | | | | |
| 359 | 49700 | | Insurance Recovery | 0 | 20,408 | 20,408 | | 20,408 |
| 360 | 49800 | | Transfers In (From Gen Cap Projects Fund 171) | 55,546 | | 55,546 | | 55,546 |
| 361 | | | | | | | | |
| 362 | | | Total Transfers In | 55,546 | 20,408 | 75,954 | 0 | 75,954 |
| 363 | | | | | | | | |
| 364 | | | | | | | | |
| 365 | | | | | | | | |
| 366 | Total Revenues and Transfers In | | | 18,435,889 | 192,363 | 18,628,252 | (11,173) | 18,617,079 |
| 367 | | | | | | | | |
| 368 | | | | | | | | |
| 369 | | | | | | | | |
| 370 | | | | | | | | |

Loudon County
County General Fund 101
Fiscal Year Ending June 30, 2020

| | A | B | C | D | E | F | G | H |
|-----|----------------|---|---|-----------|-----------|-----------|----------|--------------|
| 1 | | | General Fund 101 | | | | | |
| 2 | Account Number | | 4/1/2020 12:15 | 2019-2020 | 2019-2020 | Approved | Proposed | Proposed |
| 3 | | | | Org Bgt | Amds | Amded Bgt | Amds | Amded Budget |
| 4 | | | | | | | | |
| 515 | | | | | | | | |
| 516 | 51500 | | Election Commission | | | | | |
| 517 | 101 | | County Official/Administrative Officer (Election Offi | 72,676 | | 72,676 | | 72,676 |
| 518 | 161 | | Administrative Assistant | 41,663 | | 41,663 | | 41,663 |
| 519 | 168 | | Temporary Personnel | 15,965 | | 15,965 | | 15,965 |
| 520 | 187 | | Overtime Pay | 3,000 | | 3,000 | | 3,000 |
| 521 | 192 | | Election Commission (Payroll; but no TCRS) | 13,770 | | 13,770 | | 13,770 |
| 522 | 193 | | Election Workers (Some payroll; SS & Med; NO TCRS) | 46,000 | | 46,000 | | 46,000 |
| 523 | 201 | | Social Security | 11,971 | | 11,971 | | 11,971 |
| 524 | 204 | | State Retirement | 7,873 | | 7,873 | | 7,873 |
| 525 | 206 | | Life Insurance | 380 | | 380 | | 380 |
| 526 | 206-RET-LIF | | Life Insurance | 116 | | 116 | | 116 |
| 527 | 207 | | Medical Insurance | 9,159 | | 9,159 | | 9,159 |
| 528 | 207-RET-MED | | Medical Insurance | 4,115 | | 4,115 | | 4,115 |
| 529 | 207-SRHTH | | Medical Insurance | 1,756 | | 1,756 | | 1,756 |
| 530 | 208 | | Dental Insurance | 916 | | 916 | | 916 |
| 531 | 208-RET-DEN | | Dental Insurance - Retirees | 195 | | 195 | | 195 |
| 532 | 210 | | Unemployment Compensation | | | 0 | | 0 |
| 533 | 212 | | Employer Medicare | 2,800 | | 2,800 | | 2,800 |
| 534 | 302 | | Advertising | | 550 | 550 | | 550 |
| 535 | 307 | | Communication | 4,000 | | 4,000 | | 4,000 |
| 536 | 307-WIRE | | Communication | | | 0 | | 0 |
| 537 | 320 | | Dues and Memberships | 450 | | 450 | | 450 |
| 538 | 330 | | Operating Lease Payments | 5,000 | | 5,000 | | 5,000 |
| 539 | 330 | | Operating Lease Payments - Voting Machines | | | 0 | | 0 |
| 540 | 332 | | Legal Notices, Recording and Court Cos | 2,500 | | 2,500 | | 2,500 |
| 541 | 333 | | License (Hardware) | 7,250 | | 7,250 | | 7,250 |
| 542 | 336 | | Maintenance and Repair Services - Office Equipment | 2,500 | | 2,500 | | 2,500 |
| 543 | 348 | | Postal Charges | 6,000 | | 6,000 | | 6,000 |
| 544 | 349 | | Printing, Stationery, and Forms | 4,500 | | 4,500 | | 4,500 |
| 545 | 351 | | Rental | 300 | | 300 | | 300 |
| 546 | 355 | | Travel | 10,000 | | 10,000 | | 10,000 |
| 547 | 399 | | Other Contracted Services | 22,580 | | 22,580 | | 22,580 |
| 548 | 414 | | Duplicating Supplies | 500 | | 500 | | 500 |
| 549 | 435 | | Office Supplies | 4,000 | | 4,000 | | 4,000 |
| 550 | 451 | | Uniforms | 900 | | 900 | | 900 |
| 551 | 513 | | Workers' Comp Insurance | 1,777 | | 1,777 | | 1,777 |
| 552 | 524 | | In-Service/Staff Development | 100 | | 100 | | 100 |
| 553 | 719 | | Office Equipment | 2,500 | | 2,500 | | 2,500 |
| 554 | 719 | | Office Equipment - | 5,000 | (5,000) | 0 | | 0 |
| 555 | 719-ELECT | | Office Equipment - Grant | 0 | 1,837 | 1,837 | | 1,837 |
| 556 | 719-TECH | | Office Equipment - Grant | 0 | 25,000 | 25,000 | | 25,000 |
| 557 | 731-ELECT | | Voting Machines | 594,257 | | 594,257 | (75,000) | 519,257 |
| 558 | 790 | | Other Equipment (Cages to transport equipment) | 0 | 5,000 | 5,000 | 75,000 | 80,000 |
| 559 | | | | | | | | |
| 560 | | | Total Election Commission | 906,469 | 27,387 | 933,856 | 0 | 933,856 |

Loudon County
County General Fund 101
Fiscal Year Ending June 30, 2020

| | A | B | C | D | E | F | G | H |
|-----|-----------------------|---|---|----------------|-----------|----------------|----------|----------------|
| 1 | | | General Fund 101 | | | | | |
| 2 | Account Number | | 4/1/2020 12:15 | 2019-2020 | 2019-2020 | Approved | Proposed | Proposed |
| 3 | | | | Org Bgt | Amds | Amded Bgt | Amds | Amded Budget |
| 4 | | | | | | | | |
| 639 | 51750 | | Codes Compliance | | | | | |
| 640 | 103 | | Assistant(s) | 53,943 | | 53,943 | | 53,943 |
| 641 | 103 | | New Employee- Bldg/Zoning Inspector | 47,000 | | 47,000 | (2,000) | 45,000 |
| 642 | 105 | | Supervisor/Director | 57,976 | | 57,976 | 2,000 | 59,976 |
| 643 | 161 | | Secretary(ies) | 36,588 | | 36,588 | | 36,588 |
| 644 | 201 | | Social Security | 12,121 | | 12,121 | | 12,121 |
| 645 | 204 | | State Retirement | 13,119 | | 13,119 | | 13,119 |
| 646 | 206 | | Life Insurance | 538 | | 538 | | 538 |
| 647 | 207 | | Medical Insurance | 44,539 | | 44,539 | | 44,539 |
| 648 | 208 | | Dental Insurance | 2,406 | | 2,406 | | 2,406 |
| 649 | 212 | | Employer Medicare | 2,835 | | 2,835 | | 2,835 |
| 650 | 307 | | Communication | 3,900 | (1,160) | 2,740 | | 2,740 |
| 651 | 307-WIRE | | Communication | | 1,160 | 1,160 | | 1,160 |
| 652 | 320 | | Dues and Memberships | 850 | | 850 | | 850 |
| 653 | 330 | | Operating Lease Payments | 3,100 | | 3,100 | | 3,100 |
| 654 | 338 | | Maintenance and Repair Services-Vehicl | 2,800 | | 2,800 | | 2,800 |
| 655 | 348 | | Postal Charges | 700 | | 700 | | 700 |
| 656 | 349 | | Printing, Stationery and Forms | 1,600 | | 1,600 | | 1,600 |
| 657 | 355 | | Travel | 2,000 | | 2,000 | | 2,000 |
| 658 | 399 | | Other Contracted Services - Dirty Lot Cleanup | 10,000 | | 10,000 | | 10,000 |
| 659 | 414 | | Duplicating Supplies | 150 | | 150 | | 150 |
| 660 | 425 | | Gasoline | 6,000 | | 6,000 | | 6,000 |
| 661 | 435 | | Office Supplies | 3,400 | | 3,400 | | 3,400 |
| 662 | 450 | | Tires and Tubes | 500 | | 500 | | 500 |
| 663 | 451 | | Uniforms | 450 | | 450 | | 450 |
| 664 | 513 | | Workman's Compensation Insurance | 2,737 | | 2,737 | | 2,737 |
| 665 | 524 | | In-Service/Staff Development | 3,200 | | 3,200 | | 3,200 |
| 666 | 711 | | Furniture and Fixtures | 600 | | 600 | | 600 |
| 667 | 719 | | Office Equipment | 3,100 | | 3,100 | | 3,100 |
| 668 | | | | | | | | |
| 669 | | | Total Codes Compliance | 316,152 | 0 | 316,152 | 0 | 316,152 |
| 670 | | | | | | | | |

\$500/month
supplement while
Codes Director also
Interim Planner
[16Mar_06Apr2020]

Loudon County
County General Fund 101
Fiscal Year Ending June 30, 2020

| | A | B | C | D | E | F | G | H |
|-----|----------------|---|-----------------------------|-----------|-----------|-----------|----------|--------------|
| 1 | | | General Fund 101 | | | | | |
| 2 | | | 4/1/2020 12:15 | 2019-2020 | 2019-2020 | Approved | Proposed | Proposed |
| 3 | Account Number | | | Org Bgt | Amds | Amded Bgt | Amds | Amded Budget |
| 4 | | | | | | | | |
| 958 | | | | | | | | |
| 959 | 52600 | | Data Processing | | | | | |
| 960 | 120 | | Computer Programmer | 52,938 | | 52,938 | | 52,938 |
| 961 | 121 | | Data Processing Personnel | 44,138 | | 44,138 | | 44,138 |
| 962 | 187 | | Overtime Pay | | | 0 | 100 | 100 |
| 963 | 201 | | Social Security | 6,019 | | 6,019 | | 6,019 |
| 964 | 204 | | State Retirement | 6,514 | | 6,514 | | 6,514 |
| 965 | 206 | | Life Insurance | 337 | | 337 | | 337 |
| 966 | 207 | | Medical Insurance | 17,350 | | 17,350 | | 17,350 |
| 967 | 208 | | Dental Insurance | 274 | | 274 | | 274 |
| 968 | 212 | | Employer Medicare | 1,408 | | 1,408 | | 1,408 |
| 969 | 307 | | Communication | 8,000 | | 8,000 | | 8,000 |
| 970 | 307 WIRE | | Communication | 2,200 | | 2,200 | | 2,200 |
| 971 | 320 | | Dues and Memberships | | | 0 | | 0 |
| 972 | 348 | | Postage | 100 | | | | |
| 973 | 355 | | Travel | 1,000 | | 1,000 | | 1,000 |
| 974 | 399 | | Other Contracted Services | 33,500 | | 33,500 | | 33,500 |
| 975 | 435 | | Office Supplies | 250 | | 250 | (100) | 150 |
| 976 | 513 | | Workers' Comp Insurance | 1,825 | | 1,825 | | 1,825 |
| 977 | 524 | | Inservice/Staff Development | 3,000 | | 3,000 | | 3,000 |
| 978 | 709 | | Data Processing Equipment | 10,000 | | 10,000 | | 10,000 |
| 979 | 711 | | Furniture & Fixtures | | | 0 | | 0 |
| 980 | 719 | | Office Equipment | 1,400 | | 1,400 | | 1,400 |
| 981 | | | | | | 0 | | 0 |
| 982 | | | Total Data Processing | 190,253 | 0 | 190,253 | 0 | 190,253 |
| 983 | | | | | | | | |
| 984 | | | | | | | | |
| 985 | | | | | | | | |
| 986 | Total Finance | | | 2,560,821 | 7,500 | 2,568,321 | 0 | 2,568,321 |
| 987 | | | | | | | | |

Loudon County
County General Fund 101
Fiscal Year Ending June 30, 2020

| | A | B | C | D | E | F | G | H |
|------|-----------------------|---|--|------------------|------------------|------------------|-----------------|---------------------|
| 1 | | | General Fund 101 | | | | | |
| 2 | Account Number | | 4/1/2020 12:28 | 2019-2020 | 2019-2020 | Approved | Proposed | Proposed |
| 3 | | | | Org Bgt | Amds | Amded Bgt | Amds | Amded Budget |
| 4 | | | | | | | | |
| 1167 | | | | | | | | |
| 1168 | 53700 | | Judicial Commissioners | | | | | |
| 1169 | 105 | | Supervisor/Director | 0 | | 0 | | 0 |
| 1170 | 169 | | Part-time Personnel (2 P/T Magistrates | 54,653 | | 54,653 | | 54,653 |
| 1171 | 201 | | Social Security | 3,388 | | 3,388 | | 3,388 |
| 1172 | 204 | | State Retirement | 3,667 | | 3,667 | | 3,667 |
| 1173 | 212 | | Employer Medicare | 792 | | 792 | | 792 |
| 1174 | 307-WIRE | | Communication | 1,000 | | 1,000 | | 1,000 |
| 1175 | 435 | | Office Supplies | 1,200 | | 1,200 | | 1,200 |
| 1176 | 524 | | In-Service/ Staff Development | 500 | | 500 | | 500 |
| 1177 | 719 | | Office Equipment | 1,200 | | 1,200 | | 1,200 |
| 1178 | | | | 66,400 | 0 | 66,400 | 0 | 66,400 |
| 1179 | | | | | | | | |
| 1180 | | | | | | | | |
| 1181 | 53900 | | Other Administration of Justice | | | | | |
| 1182 | 194 | | Jury and Witness Fees | 15,000 | | 15,000 | | 15,000 |
| 1183 | 307 | | Communication | 960 | | 960 | | 960 |
| 1184 | 399 | | Other Contracted Services | 2,800 | | 2,800 | | 2,800 |
| 1185 | 711 | | Furniture & Fixtures | | | 0 | | 0 |
| 1186 | 719 | | Courtroom Equipment | 0 | | 0 | | 0 |
| 1187 | | | | | | | | |
| 1188 | | | Total Other Administration of Justice | 18,760 | 0 | 18,760 | 0 | 18,760 |
| 1189 | | | | | | | | |
| 1190 | | | | | | | | |
| 1191 | | | | | | | | |
| 1192 | 53920 | | Courtroom Security | | | | | |
| 1193 | 399 | | Other Contracted Services | 2,000 | | 2,000 | 1,000 | 3,000 |
| 1194 | 708 | | Communication Equipment | | | | | |
| 1195 | 708-CRSEC | | Communication Equipment | | | | | |
| 1196 | 711-CRSEC | | Furniture and Fixtures | | | | | |
| 1197 | | | | | | | | |
| 1198 | | | Total Courtroom Security | 2,000 | 0 | 2,000 | 1,000 | 3,000 |
| 1199 | | | | | | | | |
| 1200 | | | | | | | | |
| 1201 | | | | | | | | |
| 1202 | | | | | | | | |
| 1203 | | | | | | | | |
| 1204 | 53930 | | Victim Assistance Programs | | | | | |
| 1205 | 358 | | Remittance of Revenues Collected | 22,000 | | 22,000 | | 22,000 |
| 1206 | | | | | | | | |
| 1207 | | | | | | | | |
| 1208 | | | Total Victim Assistance Program | 22,000 | 0 | 22,000 | 0 | 22,000 |
| 1209 | | | | | | | | |
| 1210 | | | | | | | | |
| 1211 | | | | | | | | |
| 1212 | | | | | | | | |
| 1213 | | | Total Administration of Justice | 2,326,883 | 42,292 | 2,369,175 | 1,000 | 2,370,175 |
| 1214 | | | | | | | | |

Loudon County
County General Fund 101
Fiscal Year Ending June 30, 2020

| | A | B | C | D | E | F | G | H |
|------|----------------|---|--|-----------|-----------|-----------|----------|--------------|
| 1 | | | General Fund 101 | | | | | |
| 2 | | | 4/1/2020 12:28 | 2019-2020 | 2019-2020 | Approved | Proposed | Proposed |
| 3 | Account Number | | | Org Bgt | Amds | Amded Bgt | Amds | Amded Budget |
| 4 | | | | | | | | |
| 1215 | 54000 | | Public Safety | | | | | |
| 1216 | | | | | | | | |
| 1217 | 54110 | | Sheriff's Department | | | | | |
| 1218 | 101 | | County Official/Administrative Officer (Sheriff) | 93,742 | | 93,742 | | 93,742 |
| 1219 | 103 | | Assistants (Chief Deputies) | 127,069 | | 127,069 | | 127,069 |
| 1220 | 106 | | Deputies - 4 New Employees - 3 Patrol, 1 Court | 174,224 | | 174,224 | | 174,224 |
| 1221 | 106 | | Deputies (XTRA = \$41,200) | 1,223,897 | (45,032) | 1,178,865 | | 1,178,865 |
| 1222 | 108 | | Investigator(s) | 155,017 | | 155,017 | | 155,017 |
| 1223 | 109 | | Captain(s) | 56,544 | | 56,544 | | 56,544 |
| 1224 | 110 | | Lieutenant(s) | 158,013 | | 158,013 | | 158,013 |
| 1225 | 115 | | Sergeant(s) | 103,345 | 51,688 | 155,033 | | 155,033 |
| 1226 | 120 | | Computer Programmer (XTRA = \$3,399) | 47,023 | | 47,023 | | 47,023 |
| 1227 | 140 | | Salary Supplement (Inservice reimb by State) | 29,400 | 9,800 | 39,200 | | 39,200 |
| 1228 | 161 | | Secretary(ies) | 35,176 | | 35,176 | | 35,176 |
| 1229 | 162 | | Clerical Personnel | 104,065 | | 104,065 | | 104,065 |
| 1230 | 166 | | Custodial Personnel | 29,236 | | 29,236 | | 29,236 |
| 1231 | 169 | | Part-time Personnel (Deputies) | 50,000 | | 50,000 | | 50,000 |
| 1232 | 170 | | School Resource Officer - 2 New Employees | 87,112 | | 87,112 | | 87,112 |
| 1233 | 170 | | School Resource Officer (XTRA = \$15,450) | 409,222 | | 409,222 | | 409,222 |
| 1234 | 187 | | Overtime Pay | 150,000 | | 150,000 | | 150,000 |
| 1235 | 187-STBLT | | Overtime (GHSO Grant; Seatbelt Usage) | | | 0 | | 0 |
| 1236 | 187-GHSOG | | Overtime Pay (GHSO Grant) | | | 0 | | 0 |
| 1237 | 201 | | Social Security | 188,052 | 412 | 188,464 | | 188,464 |
| 1238 | 201-STBLT | | Social Sec (GHSO Grant; Seatbelt Usage) | | | 0 | | 0 |
| 1239 | 201-GHSOG | | Social Security (GHSO Grant) | | | 0 | | 0 |
| 1240 | 204 | | State Retirement | 11,305 | | 11,305 | | 11,305 |
| 1241 | 204 | | State Retirement - Improved Benefit 55/25 | 287,372 | 800 | 288,172 | | 288,172 |
| 1242 | 204-STBLT | | Retirement (GHSO Grant; Seatbelt Usage) | | | 0 | | 0 |
| 1243 | 204-GHSOG | | State Retirement (GHSO Grant) | | | 0 | | 0 |
| 1244 | 206 | | Life Insurance - 6 New Employees - Family Cover | 1,076 | | 1,076 | | 1,076 |
| 1245 | 206 | | Life Insurance | 9,040 | | 9,040 | | 9,040 |
| 1246 | 206-RET-LIF | | Life Insurance-Retirees | 1,309 | | 1,309 | | 1,309 |
| 1247 | 207 | | Medical Insurance - 6 New Employees Family Cover | 98,920 | | 98,920 | | 98,920 |
| 1248 | 207 | | Medical Insurance | 649,513 | | 649,513 | | 649,513 |
| 1249 | 207-SRHTH | | Medical Insurance - Sr. Health | 8,562 | | 8,562 | | 8,562 |
| 1250 | 208 | | Dental Insurance - 6 New Employees Family Cov | 4,811 | | 4,811 | | 4,811 |
| 1251 | 208 | | Dental Insurance | 33,358 | | 33,358 | | 33,358 |
| 1252 | 208-RET-DEN | | Dental Insurance-Retirees | 1,644 | | 1,644 | | 1,644 |
| 1253 | 210 | | Unemployment Compensation | | | 0 | | 0 |
| 1254 | 212 | | Employer Medicare | 43,980 | 96 | 44,076 | | 44,076 |
| 1255 | 212-STBLT | | Medicare (GHSO Grant; Seatbelt Usage) | | | 0 | | 0 |
| 1256 | 212-GHSOG | | Employer Medicare (GHSO Grant) | | | 0 | | 0 |
| 1257 | 307 | | Communication | 20,000 | (7,955) | 12,045 | | 12,045 |
| 1258 | 307-WIRE | | Communication | | 7,955 | | | |
| 1259 | 320 | | Dues and Memberships | 2,750 | | 2,750 | | 2,750 |
| 1260 | 330 | | Operating Lease Payments | 3,000 | | 3,000 | | 3,000 |

Loudon County
County General Fund 101
Fiscal Year Ending June 30, 2020

| | A | B | C | D | E | F | G | H |
|------|----------------|---|--|-----------|-----------|-----------|----------|--------------|
| 1 | | | General Fund 101 | | | | | |
| 2 | Account Number | | 4/1/2020 12:28 | 2019-2020 | 2019-2020 | Approved | Proposed | Proposed |
| 3 | | | | Org Bgt | Amds | Amded Bgt | Amds | Amded Budget |
| 4 | | | | | | | | |
| 1261 | 330-SHERF | | Operating Lease Payments (From Restricted Funds) | 3,000 | | 3,000 | | 3,000 |
| 1262 | 332-AWARE | | Legal Notices (From Committed Funds) | | | 0 | | 0 |
| 1263 | 334 | | Maintenance Agreements | 10,000 | | 10,000 | | 10,000 |
| 1264 | 334-RADIO | | Maintenance Agreements - Radios | 14,000 | | 14,000 | | 14,000 |
| 1265 | 336 | | Equipment Maint & Repair | 5,000 | | 5,000 | | 5,000 |
| 1266 | 338 | | Maintenance and Repair Services - Vehicles | 175,000 | 21,238 | 196,238 | | 196,238 |
| 1267 | 338-FY18 | | Maintenance and Repair Services - Vehicles | | | 0 | | 0 |
| 1268 | 340 | | Med & Den - 6 New Employees | 1,500 | | 1,500 | | 1,500 |
| 1269 | 340 | | Medical and Dental Services | 5,000 | | 5,000 | | 5,000 |
| 1270 | 348 | | Postal Charges | 6,500 | | 6,500 | | 6,500 |
| 1271 | 349 | | Printing, Stationery, and Forms | 3,500 | | 3,500 | | 3,500 |
| 1272 | 349-LFSVR | | Printing, Stationery, and Forms | 1,000 | | | | |
| 1273 | 353 | | Tow-in Services | 6,500 | | 6,500 | | 6,500 |
| 1274 | 355 | | Travel | 12,000 | | 12,000 | | 12,000 |
| 1275 | 355-FY18 | | Travel | | | | | |
| 1276 | 355-LFSVR | | Travel | | | | | |
| 1277 | 399 | | Other Contracted Services | 23,000 | | 23,000 | | 23,000 |
| 1278 | 412 | | Diesel Fuel | 500 | | 500 | | 500 |
| 1279 | 413 | | Drugs and Medical Supplies | | | 0 | | 0 |
| 1280 | 414 | | Duplicating Supplies | 1,800 | | 1,800 | | 1,800 |
| 1281 | 422 | | Food Supplies | 2,000 | | 2,000 | | 2,000 |
| 1282 | 425 | | Gasoline | 200,000 | | 200,000 | | 200,000 |
| 1283 | 431 | | Law Enf Supplies - 6 New Employees | 1,200 | | 1,200 | | 1,200 |
| 1284 | 435 | | Office Supplies | 10,000 | | 10,000 | | 10,000 |
| 1285 | 450 | | Tires | 25,000 | | 25,000 | | 25,000 |
| 1286 | 451 | | Uniforms - 6 New Employees | 5,700 | | 5,700 | | 5,700 |
| 1287 | 451 | | Uniforms | 37,500 | | 37,500 | | 37,500 |
| 1288 | 499 | | Other Supplies and Materials | 10,000 | | 10,000 | | 10,000 |
| 1289 | 499-AWARE | | Other Supplies and Materials (From Committed Fund) | 3,000 | | 3,000 | | 3,000 |
| 1290 | 499-LFSVR | | Other Supplies and Materials (From Committed Fund) | 3,000 | | 3,000 | | 3,000 |
| 1291 | 508 | | Premiums on Corporate Surety Bonds | 250 | | 250 | | 250 |
| 1292 | 513 | | Worker's Comp Insurance | 47,728 | | 47,728 | | 47,728 |
| 1293 | 524 | | In Service/Staff Development | 30,000 | | 30,000 | | 30,000 |
| 1294 | 524 LFSVR | | In Service/Staff Dev-Project Lifesaver | | | 0 | | 0 |
| 1295 | 708 | | Communication Equip - 6 New Employees | 44,000 | | 44,000 | | 44,000 |
| 1296 | 708 | | Communication Equipment | 16,000 | | 16,000 | | 16,000 |
| 1297 | 716 | | Law Enf Equipment 6 New Employees | 25,560 | | 25,560 | | 25,560 |
| 1298 | 716 | | Law Enforcement Equipment | 20,000 | 5,000 | 25,000 | (5,000) | 20,000 |
| 1299 | 716-AWARE | | Law Enforcement Equipment (From Committed Fund) | 4,700 | | 4,700 | | 4,700 |
| 1300 | 716 GHSOG | | Law Enforcement Equip (GHSOG) | | | 0 | | 0 |
| 1301 | 716 SRO | | Law Enforcement Equipment - \$5,000 from BOE for | 0 | | 0 | 5,000 | 5,000 |
| 1302 | 718 | | Vehicles - New Employees | 160,000 | | 160,000 | | 160,000 |
| 1303 | 719 | | Office Equipment | 2,000 | | 2,000 | | 2,000 |
| 1304 | 719-SHERF | | Office Equipment (From Restricted Funds) | 10,000 | | 10,000 | | 10,000 |
| 1305 | | | | | | | | |
| 1306 | | | Total Sheriff's Department | 5,323,715 | 44,002 | 5,367,717 | 0 | 5,367,717 |

Contribution from BOE
for SROs. See Revenue
#48130
[21Jan_03Feb2020]

Loudon County
County General Fund 101
Fiscal Year Ending June 30, 2020

| | A | B | C | D | E | F | G | H |
|------|----------------|---|--|-----------|-----------|-----------|----------|--------------|
| 1 | | | General Fund 101 | | | | | |
| 2 | Account Number | | 4/1/2020 12:28 | 2019-2020 | 2019-2020 | Approved | Proposed | Proposed |
| 3 | | | | Org Bgt | Amds | Amded Bgt | Amds | Amded Budget |
| 4 | | | | | | | | |
| 1773 | 58300 | | Veterans Services | | | | | |
| 1774 | 169 | | Part-time Personnel | 13,084 | | 13,084 | | 13,084 |
| 1775 | 189 | | Other Salaries & Wages | 23,515 | 4,650 | 28,165 | | 28,165 |
| 1776 | 201 | | Social Security | 2,269 | 288 | 2,557 | | 2,557 |
| 1777 | 212 | | Employer Medicare | 531 | 67 | 598 | | 598 |
| 1778 | 204 | | Retirement | 0 | 1,890 | 1,890 | | 1,890 |
| 1779 | 307 | | Communications | 1,300 | (10) | 1,290 | | 1,290 |
| 1780 | 307 WIRE | | Communications | 400 | 10 | 410 | | 410 |
| 1781 | 316 | | Contributions - Veteran's Honor Guard | | | 0 | | 0 |
| 1782 | 320 | | Dues and Memberships | 950 | | 950 | | 950 |
| 1783 | 330 | | Operating Lease Payments | 250 | | 250 | | 250 |
| 1784 | 334 | | Maintenance Agreement - TDVA Claims Mgmt Progr | 898 | | 898 | | 898 |
| 1785 | 338 | | Maintenace and Repair Services-Vehicl | 55 | (55) | 0 | | 0 |
| 1786 | 348 | | Postal Charges | 300 | | 300 | (300) | 0 |
| 1787 | 349 | | Printing, Stationery, and Forms | 100 | 95 | 195 | 300 | 495 |
| 1788 | 355 | | Travel | 3,347 | 55 | 3,402 | | 3,402 |
| 1789 | 414 | | Duplicating Supplies | 162 | | 162 | | 162 |
| 1790 | 471 | | Software | 500 | (400) | 100 | | 100 |
| 1791 | 425 | | Gasoline | 500 | (500) | 0 | | 0 |
| 1792 | 435 | | Office Supplies | 600 | 405 | 1,005 | | 1,005 |
| 1793 | 499 | | Other Supplies & Materials | 0 | | 0 | | 0 |
| 1794 | 719 | | Office Equipment | 0 | 400 | 400 | | 400 |
| 1795 | | | | | | | | |
| 1796 | | | Total Veterans Services | 48,761 | 6,895 | 55,656 | 0 | 55,656 |
| 1797 | | | | | | | | |

Increase hours of
Veteran's Services
Officer to FT
[Nov18_02Dec2019]

Loudon County
County General Fund 101
Fiscal Year Ending June 30, 2020

| | A | B | C | D | E | F | G | H |
|------|--|---|-------------------------|------------|-----------|------------|----------|--------------|
| 1 | | | General Fund 101 | | | | | |
| 2 | Account Number | | 4/1/2020 12:28 | 2019-2020 | 2019-2020 | Approved | Proposed | Proposed |
| 3 | | | | Org Bgt | Amds | Amded Bgt | Amds | Amded Budget |
| 4 | | | | | | | | |
| 1865 | | | | | | | | |
| 1866 | Estimated Total FB per AUDIT June 30, 2019 | | | 7,781,901 | | | | |
| 1867 | Less Restricted, Committed & Assigned Items (Enc=256,277; Res/Com=591,673) | | | 847,949 | | | | |
| 1868 | Estimated Available Fund Balance July 1, 2019 | | | 6,933,952 | | 6,933,952 | | 6,933,952 |
| 1869 | | | | | | | | |
| 1870 | | | | | | | | |
| 1871 | | | | | | | | |
| 1872 | | | | | | | | |
| 1873 | | | | | | | | |
| 1874 | Total Revenue | | | 18,380,343 | 171,955 | 18,552,298 | (11,173) | 18,541,125 |
| 1875 | Transfers In | | | 55,546 | 20,408 | 75,954 | 0 | 75,954 |
| 1876 | | | | | | | | |
| 1877 | Total Revenue and Transfers In | | | 18,435,889 | 192,363 | 18,628,252 | (11,173) | 18,617,079 |
| 1878 | | | | | | | | |
| 1879 | | | | | | | | |
| 1880 | | | | | | | | |
| 1881 | Total Available Funds | | | 25,369,841 | 192,363 | 25,562,204 | (11,173) | 25,551,031 |
| 1882 | | | | | | | | |
| 1883 | Expenditure Budget | | | 21,928,360 | 184,040 | 22,112,400 | 1,000 | 22,113,400 |
| 1884 | Transfers Out | | | 0 | 37,400 | 37,400 | 0 | 37,400 |
| 1885 | | | | | | | | |
| 1886 | Total Expenditures and Transfer Out | | | 21,928,360 | 221,440 | 22,149,800 | 1,000 | 22,150,800 |
| 1887 | | | | | | | | |
| 1888 | Ending Fund Balance | | | 3,441,481 | (29,077) | 3,412,404 | (12,173) | 3,400,231 |
| 1889 | | | | | | | | |
| 1890 | | | | | | | | |
| 1891 | | | | | | | | |

Loudon County Commission

Exhibit 040620-H

***Budget Recommendation –
Highway Department
Fund 131***

Loudon County
Highway Fund 131
Fiscal Year Ending June 30, 2020

| | A | B | C | D | E | F | G | H |
|-----|--|---|--------------------------------|----------------|--------------|----------------|--------------|----------------|
| 1 | | | Highway Dept 131 | | | | | |
| 2 | Account | | 3/16/2020 14:25 | 2019-2020 | 2019-2020 | Approved | Proposed | Proposed |
| 3 | Number | | | Org Bgt | Amds | Amded Bgt | Amds | Amded Budget |
| 4 | | | | | | | | |
| 117 | Total Highway/Public Works Expenditures | | | | | | | |
| 118 | 60000 | | Highways | | | | | |
| 119 | 61000 | | Administration | | | | | |
| 120 | 101 | | County Official/Adm Officer | 93,742 | | 93,742 | | 93,742 |
| 121 | 103 | | Assistant | 69,680 | | 69,680 | | 69,680 |
| 122 | 141 | | Foremen | | | 0 | | 0 |
| 123 | 142 | | Mechanics | 38,085 | | 38,085 | | 38,085 |
| 124 | 143 | | Equipment Operators | | | 0 | | 0 |
| 125 | 144 | | Equipment Operators - Heavy | 190,133 | | 190,133 | | 190,133 |
| 126 | 145 | | Equipment Operators - Light | 268,237 | (2,500) | 265,737 | | 265,737 |
| 127 | 147 | | Truck Drivers | 107,599 | | 107,599 | | 107,599 |
| 128 | 161 | | Secretary | 41,205 | | 41,205 | | 41,205 |
| 129 | 162 | | Clerical Personnel | | | 0 | | 0 |
| 130 | 168 | | Temporary Personnel | | | 0 | | 0 |
| 131 | 169 | | Part-time Personnel | 12,480 | 2,500 | 14,980 | | 14,980 |
| 132 | 187 | | Overtime Pay | 15,000 | | 15,000 | | 15,000 |
| 133 | 302 | | Advertising | 150 | | 150 | | 150 |
| 134 | 320 | | Dues & Memberships | 6,500 | (1,000) | 5,500 | | 5,500 |
| 135 | 331 | | Legal Services | 500 | | 500 | | 500 |
| 136 | 337 | | Maintenance - Office Equipment | | | 0 | | 0 |
| 137 | 348 | | Postal Charges | 100 | 50 | 150 | | 150 |
| 138 | 349 | | Printing, Stationery & Forms | 800 | | 800 | | 800 |
| 139 | 355 | | Travel | 4,000 | | 4,000 | | 4,000 |
| 140 | 414 | | Duplicating Supplies | 0 | 61 | 61 | | 61 |
| 141 | 435 | | Office Supplies | 1,500 | (61) | 1,439 | 1,000 | 2,439 |
| 142 | 524 | | In-Service/Staff Development | 2,000 | | 2,000 | | 2,000 |
| 143 | 599 | | Other Charges | | | 0 | | 0 |
| 144 | 719 | | Office Equipment | 500 | | 500 | | 500 |
| 145 | | | | | | | | |
| 146 | | | Total Administration | 852,211 | (950) | 851,261 | 1,000 | 852,261 |
| 147 | | | | | | | | |

Loudon County Commission
EXHIBIT 040620-H

Loudon County
Highway Fund 131
Fiscal Year Ending June 30, 2020

| | A | B | C | D | E | F | G | H |
|-----|----------------|---|---|----------------|----------------|------------------|---------------|------------------|
| 1 | | | Highway Dept 131 | | | | | |
| 2 | Account | | 3/16/2020 14:25 | 2019-2020 | 2019-2020 | Approved | Proposed | Proposed |
| 3 | Number | | | Org Bgt | Amds | Amded Bgt | Amds | Amded Budget |
| 4 | | | | | | | | |
| 148 | | | | | | | | |
| 149 | | | | | | | | |
| 150 | | | | | | | | |
| 151 | 62000 | | Highway and Bridge Maintenance | | | | | |
| 152 | 321 | | Engineering Services | 500 | | 500 | (500) | 0 |
| 153 | 323 | | Explosive and Drilling Services | | | 0 | | 0 |
| 154 | 351 | | Rentals | 4,000 | | 4,000 | 500 | 4,500 |
| 155 | 399 | | Other Contracted Services | 30,000 | | 30,000 | | 30,000 |
| 156 | 402 | | Asphalt (Contract paving) | 0 | 350,000 | 350,000 | | 350,000 |
| 157 | 402 | | Asphalt (Contract paving) | 0 | 534,950 | 534,950 | | 534,950 |
| 158 | 403 | | Asphalt - Cold Mix | 6,000 | | 6,000 | | 6,000 |
| 159 | 404 | | Asphalt - Hot Mix | 500,000 | (350,000) | 150,000 | | 150,000 |
| 160 | 404 | | Asphalt - Hot Mix | 0 | 10,000 | 10,000 | | 10,000 |
| 161 | 408 | | Concrete | 7,000 | | 7,000 | | 7,000 |
| 162 | 409 | | Crushed Stone | 45,000 | | 45,000 | | 45,000 |
| 163 | 436 | | Other Road Materials | 15,000 | (3,000) | 12,000 | | 12,000 |
| 164 | 438 | | Pipe | 20,000 | 12,711 | 32,711 | 61,000 | 93,711 |
| 165 | 443 | | Road Signs | 8,000 | 4,000 | 12,000 | 3,000 | 15,000 |
| 166 | 444 | | Salt | 20,000 | | 20,000 | (20,000) | 0 |
| 167 | 445 | | Sand | 1,000 | | 1,000 | | 1,000 |
| 168 | 468 | | Chemicals | 2,000 | (491) | 1,509 | | 1,509 |
| 169 | 499 | | Other Supplies & Materials | 14,000 | (4,000) | 10,000 | | 10,000 |
| 170 | | | | | | | | |
| 171 | | | Total Highway & Bridge Maintenance | 672,500 | 554,170 | 1,226,670 | 44,000 | 1,270,670 |
| 172 | | | | | | | | |
| 173 | | | | | | | | |
| 174 | | | | | | | | |
| 175 | | | | | | | | |
| 176 | | | | | | | | |

Loudon County
Highway Fund 131
Fiscal Year Ending June 30, 2020

| | A | B | C | D | E | F | G | H |
|-----|----------------|---|---|----------------|----------------|----------------|--------------|----------------|
| 1 | | | Highway Dept 131 | | | | | |
| 2 | Account | | 3/16/2020 14:25 | 2019-2020 | 2019-2020 | Approved | Proposed | Proposed |
| 3 | Number | | | Org Bgt | Amds | Amded Bgt | Amds | Amded Budget |
| 4 | | | | | | | | |
| 177 | 63100 | | Operation & Maintenance of Equipment | | | | | |
| 178 | 336 | | Maintenance & Repair - Equipment | 30,000 | | 30,000 | | 30,000 |
| 179 | 338 | | Maintenance & Repair Vehicles | 10,000 | | 10,000 | | 10,000 |
| 180 | 353 | | Tow-In Services | 1,500 | | 1,500 | | 1,500 |
| 181 | 359 | | Disposal Fees | 5,000 | | 5,000 | | 5,000 |
| 182 | 399 | | Other Contracted Services | | | 0 | | 0 |
| 183 | 412 | | Diesel Fuel | 45,000 | | 45,000 | 5,000 | 50,000 |
| 184 | 416 | | Equipment Parts - Heavy | 40,000 | | 40,000 | | 40,000 |
| 185 | 417 | | Equipment Parts - Light | 100,000 | 2,000 | 102,000 | | 102,000 |
| 186 | 418 | | Equip/Mach Parts | | | 0 | | 0 |
| 187 | 425 | | Gasoline | 30,000 | (3,000) | 27,000 | | 27,000 |
| 188 | 433 | | Lubricants | 6,000 | | 6,000 | | 6,000 |
| 189 | 446 | | Small Tools | | | 0 | | 0 |
| 190 | 450 | | Tires and Tubes | 25,000 | | 25,000 | | 25,000 |
| 191 | 499 | | Other Supplies & Materials | 10,000 | (1,452) | 8,548 | | 8,548 |
| 192 | 599 | | Other Charges | 2,000 | | 2,000 | | 2,000 |
| 193 | | | | | | | | |
| 194 | | | Total Operation & Maint of Equip | 304,500 | (2,452) | 302,048 | 5,000 | 307,048 |
| 195 | | | | | | | | |
| 196 | | | | | | | | |

Loudon County
Highway Fund 131
Fiscal Year Ending June 30, 2020

| | A | B | C | D | E | F | G | H |
|-----|-----------------------|---|--|------------------|------------------|------------------|-----------------|------------------|
| 1 | | | Highway Dept 131 | | | | | |
| 2 | Account | | 3/16/2020 14:25 | 2019-2020 | 2019-2020 | Approved | Proposed | Proposed |
| 3 | Number | | | Org Bgt | Amds | Amded Bgt | Amds | Amded Budget |
| 4 | | | | | | | | |
| 241 | 68000 | | Capital Outlay | | | | | |
| 242 | 321-BMILK | | Engineering Services | | | 0 | | 0 |
| 243 | 321-STBGP | | Engineering Services | 170,400 | (8,000) | 162,400 | | 162,400 |
| 244 | 322-BMILK | | Evaluation and Testing | 0 | 350 | 350 | | 350 |
| 245 | 339 | | Matching Share (Add'l for STBGP) | 0 | 6,578 | 6,578 | | 6,578 |
| 246 | 339-BRIDG | | Matching Share - Bridge Construction | 3,515 | | 3,515 | | 3,515 |
| 247 | 339-STBGP | | Matching Share | 5,272 | (40) | 5,232 | | 5,232 |
| 248 | 339-STAID | | Matching Share-State Aid (2% for FY2016) | 6,135 | | 6,135 | | 6,135 |
| 249 | 404-BMILK | | Asphalt - Hot Mix | 45,300 | (45,300) | 0 | | 0 |
| 250 | 404-STBGP | | Asphalt - Hot Mix | 863,618 | (86,400) | 777,218 | | 777,218 |
| 251 | 409 | | Crushed Stone | 3,000 | | 3,000 | | 3,000 |
| 252 | 705 | | Bridge Construction | 87,808 | 322,192 | 410,000 | | 410,000 |
| 253 | 706 | | Building Construction | | | | | |
| 254 | 790 | | Other Equipment (Plotter) | | | 0 | | 0 |
| 255 | 711 | | Furniture & Fixtures | | | 0 | | 0 |
| 256 | 714 | | Highway Equipment | 100,000 | | 100,000 | | 100,000 |
| 257 | 717 | | Maintenance Equipment | | | 0 | | 0 |
| 258 | 718 | | Motor Vehicles | 200,000 | (42,883) | 157,117 | (50,000) | 107,117 |
| 259 | 718- -TRA | | Motor Vehicles - Trade-in | 0 | 198,883 | 198,883 | | 198,883 |
| 260 | 726 | | State Aid Projects (Add'l for STBGP) | 0 | 328,927 | 328,927 | | 328,927 |
| 261 | 726-STAID | | State Aid Projects | 181,200 | 85,458 | 266,658 | | 266,658 |
| 262 | 726-STBGP | | State Aid Projects | 231,633 | (1,960) | 229,673 | | 229,673 |
| 263 | | | | | | | | |
| 264 | | | Total Capital Outlay | 1,897,881 | 757,805 | 2,655,686 | (50,000) | 2,605,686 |
| 265 | | | | | | | | |
| 266 | TOTAL HIGHWAYS | | | 4,389,474 | 1,310,466 | 5,699,940 | 0 | 5,699,940 |
| 267 | | | | | | | | |
| 268 | | | | | | | | |
| 269 | | | | | | | | |
| 270 | | | | | | | | |

Loudon County
Highway Fund 131
Fiscal Year Ending June 30, 2020

| | A | B | C | D | E | F | G | H |
|-----|--|---|-------------------------|-----------|-----------|-----------|----------|--------------|
| 1 | | | Highway Dept 131 | | | | | |
| 2 | Account | | 3/16/2020 14:25 | 2019-2020 | 2019-2020 | Approved | Proposed | Proposed |
| 3 | Number | | | Org Bgt | Amds | Amded Bgt | Amds | Amded Budget |
| 4 | | | | | | | | |
| 302 | Estimated Total FB per YE Report June 30, 2019 | | | 736,337 | | | | |
| 303 | Less Encumbrances | | | 5,000 | | | | |
| 304 | Estimated Available Restricted Fund Balance July 1, 2018 | | | 731,337 | | 731,337 | | 731,337 |
| 305 | | | | | | | | |
| 306 | | | | | | | | |
| 307 | | | | | | | | |
| 308 | | | | | | | | |
| 309 | Total Revenue | | | 4,446,021 | 895,308 | 5,341,329 | 0 | 5,341,329 |
| 310 | | | | | | | | |
| 311 | | | | | | | | |
| 312 | Total Available Funds | | | 5,177,358 | 895,308 | 6,072,666 | 0 | 6,072,666 |
| 313 | | | | | | | | |
| 314 | Expenditure Budget | | | 4,403,556 | 1,310,466 | 5,714,022 | 0 | 5,714,022 |
| 315 | | | | | | | | |
| 316 | Total Expenditures and Transfer Out | | | 4,403,556 | 1,310,466 | 5,714,022 | 0 | 5,714,022 |
| 317 | | | | | | | | |
| 318 | Estimated Ending Fund Balance | | | 773,802 | (415,158) | 358,644 | 0 | 358,644 |
| 319 | | | | | | | | |
| 320 | | | | | | | | |

Loudon County Commission

Exhibit 040620-I

***Budget Recommendation –
General Capital Projects***

Fund 171

LOUDON COUNTY
General Capital Projects Fund 171
Fiscal Year Ending June 30, 2020

Loudon County Commission
EXHIBIT 040620-I

| | A | B | C | D | E | F | G | H | I | J | K |
|----|---|-------|-------|---|--------------------|---|----------------|----------------|----------------|----------|----------------|
| 1 | | | | | | | | | | | |
| 2 | | | | | 04/01/20 | | | | | | |
| 3 | | | | | 4/1/20 12:48 PM | | 2019-2020 | 2019-2020 | Approved | Proposed | Proposed |
| 4 | | | | | | | Org Bgt | Amds | Amded Bgt | Amds | Amded Budget |
| 5 | | | | | SUBFUND 020 | | | | | | |
| 6 | | | | | REVENUE | | | | | | |
| 7 | | 4000 | | Local Taxes | | | | | | | |
| 8 | | | 40110 | Current Property Taxes | | | | | 0 | | 0 |
| 9 | | | 40120 | Trustee's Pr Yr | | | 2,200 | | 2,200 | | 2,200 |
| 10 | | | 40125 | Trustee's Collections-Bankruptcy | | | 100 | | 100 | | 100 |
| 11 | | | 40130 | Clerk and Master's Pr Yr | | | 4,600 | | 4,600 | | 4,600 |
| 12 | | | 40140 | Interest and Penalty | | | 500 | | 500 | | 500 |
| 13 | | | 40210 | Local Option Sales Tax | | | 178,640 | | 178,640 | | 178,640 |
| 14 | | | 40320 | Bank Excise Tax | | | 221 | | 221 | | 221 |
| 15 | | | | Total Local Revenue | | | 186,261 | 0 | 186,261 | 0 | 186,261 |
| 16 | | | | | | | | | | | |
| 17 | | | | | | | | | | | |
| 18 | | | | | | | | | | | |
| 19 | | | | | | | | | | | |
| 20 | | | | CASH TRANSFERS IN FROM OTHER SUBFUNDS | | | | | | | |
| 21 | | | | Transfer in from Subfund 019 | | | 0 | | 0 | | 0 |
| 22 | | | | Transfer in from Subfund BAL | | | | | 0 | | 0 |
| 23 | | | | | | | | | | | |
| 24 | | | | Total Transfers | | | 0 | 0 | 0 | 0 | 0 |
| 25 | | | | | | | | | | | |
| 26 | | | | | | | | | | | |
| 27 | | 49000 | | Other Sources (Non-Revenue) | | | | | | | |
| 28 | | | 49600 | Proceeds from Sale of Capital Assets (Trade-in Value of Vehicles) | | | | 222,300 | 222,300 | | 222,300 |
| 29 | | | | Total Other Non-Revenue Sources | | | 0 | 222,300 | 222,300 | 0 | 222,300 |
| 30 | | | | | | | | | | | |
| 31 | | | | | | | | | | | |
| 32 | | | | | | | | | | | |
| 33 | | | | TOTAL SUBFUND 020 REVENUE | | | 186,261 | 222,300 | 408,561 | 0 | 408,561 |
| 34 | | | | | | | | | | | |

LOUDON COUNTY
General Capital Projects Fund 171
Fiscal Year Ending June 30, 2020

| | A | B | C | D | E | F | G | H | I | J | K |
|----|---------------------|-------|---|---|---|---|-----------|-----------|-----------|----------|--------------|
| 1 | | | | | | | | | | | |
| 2 | | | | | 04/01/20 | | | | | | |
| 3 | | | | | 4/1/20 12:48 PM | | 2019-2020 | 2019-2020 | Approved | Proposed | Proposed |
| 4 | | | | | | | Org Bgt | Amds | Amded Bgt | Amds | Amded Budget |
| 35 | EXPENDITURES | | | | | | | | | | |
| 36 | | 58900 | Miscellaneous | | | | | | | | |
| 37 | | | 510 | | Trustee's Commission | | 4,000 | | 4,000 | | 4,000 |
| 38 | | | | | Total Miscellaneous Expenditures | | 4,000 | 0 | 4,000 | 0 | 4,000 |
| 39 | | | | | | | | | | | |
| 40 | | 91110 | General Administration Projects | | | | | | | | |
| 41 | | | 510 | | Trustee's Commission | | | | 0 | | 0 |
| 42 | | | 322 | | Evaluation & Testing | | 0 | 1,350 | 1,350 | | 1,350 |
| 43 | | | 399 | | Other Contracted Services-(Appropriate as needed) | | 200,000 | (182,350) | 17,650 | (3,700) | 13,950 |
| 44 | | | 399 HWY72 | | Other Contracted Services | | | | 0 | | 0 |
| 45 | | | 399 MAINT | | Other Contracted Services | | | 0 | 0 | | 0 |
| 46 | | | 708 | | Communication Equipment | | 0 | | 0 | 3,700 | 3,700 |
| 47 | | | 712 MAINT | | Heating & Air Conditioning Equipment | | | | 0 | | 0 |
| 48 | | | 718 ASSOR | | Vehicles | | | 25,200 | 25,200 | | 25,200 |
| 49 | | | 718 | | Vehicles-Trade-in Vehicles | | | 7,980 | 7,980 | | 7,980 |
| 50 | | | 718 | | Vehicles-Trade-in Vehicles | | | 236,320 | 236,320 | | 236,320 |
| 51 | | | 719 COCLK | | Office Equipment | | | | 0 | | 0 |
| 52 | | | 719 IT | | Office Equipment | | | 7,300 | 7,300 | | 7,300 |
| 53 | | | 790 MAINT | | Other Equipment | | 0 | 11,500 | 11,500 | | 11,500 |
| 54 | | | 791 COBLDG | | Other Construction | | | | 0 | | 0 |
| 55 | | | | | Total General Adm Projects | | 200,000 | 107,300 | 307,300 | 0 | 307,300 |
| 56 | | | | | | | | | | | |
| 57 | | 91130 | Public Safety Projects | | | | | | | | |
| 58 | | | 471 SHERF | | Software | | 0 | 69,000 | 69,000 | | 69,000 |
| 59 | | | 711 EMA | | Furniture & Fixtures | | | | 0 | | 0 |
| 60 | | | 718 SHERF | | Vehicles | | | 40,000 | 40,000 | | 40,000 |
| 61 | | | | | | | | | 0 | | 0 |
| 62 | | | | | Total Public Safety Projects | | 0 | 109,000 | 109,000 | 0 | 109,000 |
| 63 | | | | | | | | | | | |
| 64 | | 91140 | Public Health and Welfare | | | | | | | | |
| 65 | | | 711 SRCNTR | | Furniture & Fixtures | | 0 | 6,000 | 6,000 | | 6,000 |
| 66 | | | | | | | | | 0 | | 0 |
| 67 | | | | | | | | | | | |
| 68 | | | | | Total Health and Welfare Projects | | 0 | 6,000 | 6,000 | 0 | 6,000 |
| 69 | | | | | | | | | | | |
| 70 | | 91160 | Agriculture & Natural Resources Project | | | | | | | | |
| 71 | | | 399 AG | | Other Contracted Services | | 0 | | 0 | | 0 |
| 72 | | | | | | | | | | | |

Equipment in Annex Meeting Room
[16Mar_06Apr2020]

LOUDON COUNTY
General Capital Projects Fund 171
Fiscal Year Ending June 30, 2020

| | A | B | C | D | E | F | G | H | I | J | K |
|----|---|-------|-------|---|--|---|-----------|-----------|-----------|----------|--------------|
| 1 | | | | | | | | | | | |
| 2 | | | | | 04/01/20 | | | | | | |
| 3 | | | | | 4/1/20 12:48 PM | | 2019-2020 | 2019-2020 | Approved | Proposed | Proposed |
| 4 | | | | | | | Org Bgt | Amds | Amded Bgt | Amds | Amded Budget |
| 73 | | | | | Total Agriculture & Natural Resources Projects | | 0 | | 0 | | 0 |
| 74 | | | | | | | | | | | |
| 75 | | 91120 | | | Administration of Justice Projects | | | | | | |
| 76 | | 711 | SESSN | | Furniture | | 61,261 | | 61,261 | | 61,261 |
| 77 | | | | | Total Adm of Justice Projects | | 61,261 | 0 | 61,261 | 0 | 61,261 |
| 78 | | | | | | | | | | | |
| 79 | | | | | | | | | | | |
| 80 | | 91190 | | | Other General Government Projects | | | | | | |
| 81 | | 316 | HROAD | | Contributions | | | | 0 | | 0 |
| 82 | | | | | Total Other General Government Projects | | 0 | 0 | 0 | 0 | 0 |
| 83 | | | | | | | | | | | |
| 84 | | | | | | | | | | | |
| 85 | | | | | | | | | | | |
| 86 | | 91200 | | | Highway & Street Capital Projects | | | | | | |
| 87 | | 399 | | | Other Contracted Services | | | | 0 | | 0 |
| 88 | | 404 | | | Hot Mix | | | | 0 | | 0 |
| 89 | | 718 | | | Motor Vehicles | | | | 0 | | 0 |
| 90 | | 790 | | | Other Equipment | | | | 0 | | 0 |
| 91 | | | | | Total Highway and Street Capital Projects | | 0 | 0 | 0 | 0 | 0 |
| 92 | | | | | | | | | | | |
| 93 | | | | | | | | | | | |
| 94 | | | | | | | | | | | |
| 95 | | | | | TOTAL SUBFUND 020 EXPENDITURES | | 265,261 | 222,300 | 487,561 | 0 | 487,561 |
| 96 | | | | | | | | | | | |
| 97 | | | | | TOTAL SUBFUND 020 EXPENDITURES | | 265,261 | 222,300 | 487,561 | 0 | 487,561 |
| 98 | | | | | | | | | | | |
| 99 | | | | | | | | | | | |

LOUDON COUNTY
General Capital Projects Fund 171
Fiscal Year Ending June 30, 2020

| | A | B | C | D | E | F | G | H | I | J | K |
|-----|---|---|---|---|--|---|-----------|-----------|-----------|----------|--------------|
| 1 | | | | | | | | | | | |
| 2 | | | | | 04/01/20 | | | | | | |
| 3 | | | | | 4/1/20 12:48 PM | | 2019-2020 | 2019-2020 | Approved | Proposed | Proposed |
| 4 | | | | | | | Org Bgt | Amds | Amded Bgt | Amds | Amded Budget |
| 100 | | | | | | | | | | | |
| 101 | | | | | SUBFUND 020 SUMMARY: | | | | | | |
| 102 | | | | | Beginning Balance July 1, 2019 | | 0 | | | | |
| 103 | | | | | | | | | | | |
| 104 | | | | | Plus FY 19-20 Revenue | | 186,261 | 222,300 | 408,561 | 0 | 408,561 |
| 105 | | | | | | | | | | | |
| 106 | | | | | Less FY 19-20 Expenditures | | 265,261 | 222,300 | 487,561 | 0 | 487,561 |
| 107 | | | | | | | | | | | |
| 108 | | | | | Revenue/Expense Effect | | (79,000) | 0 | (79,000) | 0 | (79,000) |
| 109 | | | | | | | | | | | |
| 110 | | | | | | | | | | | |
| 111 | | | | | FY 19-20 Cash transfer In from Subfund 019 | | 61,321 | | 61,321 | 0 | 61,321 |
| 112 | | | | | FY 19-20 Cash transfer In from Subfund BAL | | 61,261 | | 61,261 | | 61,261 |
| 113 | | | | | | | | | | | |
| 114 | | | | | Estimated June 30 2020 Subfund 020 Balance | | 43,582 | 0 | 43,582 | 0 | 43,582 |
| 115 | | | | | | | | | | | |
| 116 | | | | | | | | | | | |

Loudon County Commission

Exhibit 040620-J

Summary Financial Report

March 2020

Template Name: LGC Defined
Created by: LGC

Loudon County Finance
Summary Financial Statement
March 2020

Loudon County Commission
EXHIBIT 040620-J

| 101 General | | Year-To-Date | | | Month-To-Date | | |
|-----------------|--|-----------------|----------------|-------------|------------------|--------------|------------|
| Account | Description | Budget Estimate | Actual | % of Budget | Estimate Avg/Mth | Actual | % of Avg |
| Revenues | | | | | | | |
| 40110 | Current Property Tax | 10,538,579.00 | (6,632,468.08) | 62.94 % | 878,214.92 | 0.00 | 0.00 % |
| 40120 | Trustee's Collections - Prior Year | 130,000.00 | (26,091.75) | 20.07 % | 10,833.33 | 59,601.68 | -550.17 % |
| 40125 | Trustee Collection-Bankruptcy | 4,200.00 | (783.55) | 18.66 % | 350.00 | 0.00 | 0.00 % |
| 40130 | Cir Clk/Clk & Master Collections-Pr Yr | 73,000.00 | (92,166.50) | 126.26 % | 6,083.33 | (7,989.90) | 131.34 % |
| 40140 | Interest And Penalty | 33,000.00 | (10,718.37) | 32.48 % | 2,750.00 | 0.00 | 0.00 % |
| 40163 | Payments In Lieu Of Taxes - Other | 532,567.00 | (519,293.83) | 97.51 % | 44,380.58 | (387,088.89) | 872.20 % |
| 40210 | Local Option Sales Tax | 265,100.00 | (243,842.72) | 91.98 % | 22,091.67 | (26,103.83) | 118.16 % |
| 40220 | Hotel/Motel Tax | 440,000.00 | (337,281.12) | 76.65 % | 36,666.67 | (32,376.09) | 88.30 % |
| 40250 | Litigation Tax - General | 100,000.00 | (83,327.02) | 83.33 % | 8,333.33 | (10,304.88) | 123.66 % |
| 40260 | Litigation Tax - Special Purpose | 290,000.00 | (216,093.38) | 74.51 % | 24,166.67 | (26,834.55) | 111.04 % |
| 40270 | Business Tax | 536,400.00 | (179,401.16) | 33.45 % | 44,700.00 | (31,290.49) | 70.00 % |
| 40275 | Mixed Drink Tax | 29,000.00 | (24,665.28) | 85.05 % | 2,416.67 | (2,692.99) | 111.43 % |
| 40320 | Bank Excise Tax | 21,022.00 | (81,929.41) | 389.73 % | 1,751.83 | (81,929.41) | 4,676.78 % |
| 40330 | Wholesale Beer Tax | 95,000.00 | (67,439.67) | 70.99 % | 7,916.67 | (5,988.80) | 75.65 % |
| 41120 | Animal Registration | 63,500.00 | (48,224.00) | 75.94 % | 5,291.67 | (3,814.00) | 72.08 % |
| 41140 | Cable TV Franchise | 332,000.00 | (270,776.79) | 81.56 % | 27,666.67 | 0.00 | 0.00 % |
| 41510 | Beer Permits | 3,500.00 | (3,087.48) | 88.21 % | 291.67 | (237.50) | 81.43 % |
| 41520 | Building Permits | 415,330.00 | (290,413.00) | 69.92 % | 34,610.83 | (32,015.00) | 92.50 % |
| 41590 | Other Permits | 35,430.00 | (18,073.00) | 51.01 % | 2,952.50 | (4,418.45) | 149.65 % |
| 42151 | Interpreter Fee | 250.00 | 0.00 | 0.00 % | 20.83 | 0.00 | 0.00 % |
| 42180 | DUI Treatment Fines | 2,600.00 | (902.50) | 34.71 % | 216.67 | (190.00) | 87.69 % |
| 42190 | Data Entry Fee - Circuit Court | 1,200.00 | (362.00) | 30.17 % | 100.00 | (50.00) | 50.00 % |
| 42191 | Courtroom Security Fee | 5,000.00 | (3,189.82) | 63.80 % | 416.67 | (360.49) | 86.52 % |
| 42210 | Fines | 10,000.00 | (10,412.61) | 104.13 % | 833.33 | (1,425.00) | 171.00 % |
| 42220 | Officers Costs | 20,000.00 | (11,105.70) | 55.53 % | 1,666.67 | (1,187.50) | 71.25 % |
| 42240 | Drug Control Fines | 2,200.00 | (2,282.67) | 103.76 % | 183.33 | (29.45) | 16.06 % |
| 42250 | Jail Fees | 1,560.00 | (584.02) | 37.44 % | 130.00 | (55.10) | 42.38 % |
| 42290 | Data Entry Fee - Criminal Court | 1,000.00 | (1,122.50) | 112.25 % | 83.33 | (70.00) | 84.00 % |
| 42292 | Victims Assistance Assessments | 3,450.00 | (2,843.00) | 82.41 % | 287.50 | (267.00) | 92.87 % |
| 42310 | Fines | 45,000.00 | (23,784.27) | 52.85 % | 3,750.00 | (4,768.99) | 127.17 % |
| 42320 | Officers Costs | 113,000.00 | (58,524.78) | 51.79 % | 9,416.67 | (7,293.26) | 77.45 % |
| 42330 | Games And Fish Fines | 500.00 | (250.65) | 50.13 % | 41.67 | 0.00 | 0.00 % |
| 42340 | Drug Control Fines | 7,500.00 | (3,041.43) | 40.55 % | 625.00 | (192.38) | 30.78 % |
| 42350 | Jail Fees | 5,200.00 | (2,745.48) | 52.80 % | 433.33 | (376.67) | 86.92 % |
| 42380 | DUI Treatment Fines | 15,000.00 | (8,344.79) | 55.63 % | 1,250.00 | (1,476.33) | 118.11 % |
| 42390 | Data Entry Fee - General Sessions | 18,000.00 | (15,460.50) | 85.89 % | 1,500.00 | (1,958.00) | 130.53 % |
| 42391 | Courtroom Security Fee | 100,000.00 | (81,068.00) | 81.07 % | 8,333.33 | (10,144.54) | 121.73 % |
| 42392 | Victims Assistance Assessments | 18,000.00 | (10,420.44) | 57.89 % | 1,500.00 | (1,376.19) | 91.75 % |

Template Name: LGC Defined
Created by: LGC

Loudon County Finance
Summary Financial Statement
March 2020

User:
Date/Time:

Tracy Blair
4/1/2020 12:16 PM
Page 2 of 27

| 101 General | | Year-To-Date | | | Month-To-Date | | |
|-------------|------------------------------------|-----------------|--------------|-------------|------------------|-------------|------------|
| Account | Description | Budget Estimate | Actual | % of Budget | Estimate Avg/Mth | Actual | % of Avg |
| 42410 | Fines | 1,700.00 | (769.50) | 45.26 % | 141.67 | 0.00 | 0.00 % |
| 42490 | Data Entry Fee - Juvenile Court | 673.00 | (460.00) | 68.35 % | 56.08 | (64.00) | 114.12 % |
| 42520 | Officers Costs | 33,000.00 | (5,484.33) | 16.62 % | 2,750.00 | (336.30) | 12.23 % |
| 42530 | Data Entry Fee - Chancery Court | 13,900.00 | (2,381.00) | 17.13 % | 1,158.33 | (120.00) | 10.36 % |
| 42591 | Courtroom Security Fee | 2,580.00 | (1,118.70) | 43.36 % | 215.00 | (127.75) | 59.42 % |
| 42610 | Fines | 5,000.00 | (7,525.00) | 150.50 % | 416.67 | (1,125.00) | 270.00 % |
| 43190 | Other General Service Charges | 56,400.00 | (35,023.18) | 62.10 % | 4,700.00 | 0.00 | 0.00 % |
| 43366 | Greenbelt Late Application Fee | 0.00 | (50.00) | 0.00 % | 0.00 | (50.00) | 0.00 % |
| 43370 | Telephone Commissions | 50,000.00 | (45,778.80) | 91.56 % | 4,166.67 | (4,179.52) | 100.31 % |
| 43380 | Vending Machine Collections | 0.00 | (38.35) | 0.00 % | 0.00 | 0.00 | 0.00 % |
| 43392 | Data Processing Fee -Register | 21,000.00 | (16,626.00) | 79.17 % | 1,750.00 | (1,968.00) | 112.46 % |
| 43394 | Data Processing Fee - Sheriff | 10,000.00 | (3,645.12) | 36.45 % | 833.33 | (454.10) | 54.49 % |
| 43395 | Sex Offender Registration Fee | 3,000.00 | (1,000.00) | 33.33 % | 250.00 | 0.00 | 0.00 % |
| 43396 | Data Processing Fee - County Clerk | 3,000.00 | (657.00) | 21.90 % | 250.00 | (69.00) | 27.60 % |
| 43399 | Vehicle Insurance Coverage and | 0.00 | (1,200.00) | 0.00 % | 0.00 | (225.00) | 0.00 % |
| 44110 | Investment Income | 20,000.00 | (213,984.46) | 1,069.92 % | 1,666.67 | (67,495.27) | 4,049.72 % |
| 44120 | Lease/Rentals | 2,600.00 | (2,350.00) | 90.38 % | 216.67 | (250.00) | 115.38 % |
| 44130 | Sale Of Materials And Supplies | 2,200.00 | (1,950.00) | 88.64 % | 183.33 | (375.00) | 204.55 % |
| 44131 | Commissary Sales | 16,000.00 | (20,394.27) | 127.46 % | 1,333.33 | (1,641.95) | 123.15 % |
| 44140 | Sale Of Maps | 500.00 | 0.00 | 0.00 % | 41.67 | 0.00 | 0.00 % |
| 44160 | Retirees' Insurance Payments | 61,550.00 | (45,979.76) | 74.70 % | 5,129.17 | (3,311.21) | 64.56 % |
| 44161 | Cobra Insurance Payments | 1,949.00 | (1,606.94) | 82.45 % | 162.42 | (87.17) | 53.67 % |
| 44170 | Miscellaneous Refunds | 3,583.00 | (9,672.35) | 269.95 % | 298.58 | (1,456.08) | 487.66 % |
| 44180 | Expenditure Credits | 0.00 | (3,642.38) | 0.00 % | 0.00 | 0.00 | 0.00 % |
| 44530 | Sale Of Equipment | 500.00 | (4,193.00) | 838.60 % | 41.67 | (188.00) | 451.20 % |
| 44560 | Damages Recovered From Individuals | 830.00 | (1,635.17) | 197.01 % | 69.17 | 0.00 | 0.00 % |
| 44570 | Contributions & Gifts | 40,647.00 | (37,991.07) | 93.47 % | 3,387.25 | (2,874.53) | 84.86 % |
| 44580 | Performance Bond Forfeitures | 18,000.00 | (18,000.00) | 100.00 % | 1,500.00 | 0.00 | 0.00 % |
| 45510 | County Clerk | 483,000.00 | (371,566.18) | 76.93 % | 40,250.00 | (57,124.20) | 141.92 % |
| 45520 | Circuit Court Clerk | 95,000.00 | (79,102.89) | 83.27 % | 7,916.67 | (5,446.55) | 68.80 % |
| 45540 | General Sessions Court Clerk | 428,250.00 | (292,078.44) | 68.20 % | 35,687.50 | (35,989.02) | 100.84 % |
| 45550 | Clerk And Master | 60,000.00 | (63,810.26) | 106.35 % | 5,000.00 | (4,530.31) | 90.61 % |
| 45580 | Register | 328,000.00 | (260,030.54) | 79.28 % | 27,333.33 | (29,646.56) | 108.46 % |
| 45590 | Sheriff | 41,000.00 | (18,344.83) | 44.74 % | 3,416.67 | 0.00 | 0.00 % |
| 45610 | Trustee | 858,000.00 | (560,279.87) | 65.30 % | 71,500.00 | 0.00 | 0.00 % |
| 46110 | Juvenile Services Program | 10,000.00 | (855.00) | 8.55 % | 833.33 | (855.00) | 102.60 % |
| 46140 | Aging Programs | 13,528.00 | (7,889.00) | 58.32 % | 1,127.33 | 0.00 | 0.00 % |
| 46210 | Law Enforcement Training Programs | 39,200.00 | (36,800.00) | 93.88 % | 3,266.67 | (36,800.00) | 1,126.53 % |
| 46290 | Other Public Safety Grants | 0.00 | (1,424.12) | 0.00 % | 0.00 | 0.00 | 0.00 % |

Loudon County Finance
Summary Financial Statement
March 2020

User:
Date/Time:

Tracy Blair
4/1/2020 12:16 PM
Page 3 of 27

| 101 General | | Year-To-Date | | | Month-To-Date | | |
|---------------------|-----------------------------------|----------------------|------------------------|----------------|---------------------|---------------------|----------------|
| Account | Description | Budget Estimate | Actual | % of Budget | Estimate Avg/Mth | Actual | % of Avg |
| 46310 | Health Department Programs | 436,300.00 | (184,489.50) | 42.29 % | 36,358.33 | (91,088.51) | 250.53 % |
| 46390 | Other Health And Welfare Grants | 20,000.00 | (20,000.00) | 100.00 % | 1,666.67 | 0.00 | 0.00 % |
| 46820 | Income Tax | 400,000.00 | 0.00 | 0.00 % | 33,333.33 | 0.00 | 0.00 % |
| 46830 | Beer Tax | 20,000.00 | (9,616.50) | 48.08 % | 1,666.67 | 0.00 | 0.00 % |
| 46835 | Vehicle Certificate Of Title Fees | 9,000.00 | (6,589.75) | 73.22 % | 750.00 | (1,543.40) | 205.79 % |
| 46840 | Alcoholic Beverage Tax | 64,975.00 | (68,723.96) | 105.77 % | 5,414.58 | 0.00 | 0.00 % |
| 46852 | State Revenue Sharing - | 40,000.00 | (37,103.18) | 92.76 % | 3,333.33 | (4,116.87) | 123.51 % |
| 46915 | Contracted Prisoner Board | 90,000.00 | (184,314.00) | 204.79 % | 7,500.00 | 0.00 | 0.00 % |
| 46960 | Registrar's Salary Supplement | 15,000.00 | (7,582.00) | 50.55 % | 1,250.00 | 0.00 | 0.00 % |
| 46970 | State Shared Sales Tax - Cities | 6,000.00 | (5,100.88) | 85.01 % | 500.00 | (637.61) | 127.52 % |
| 46980 | Other State Grants | 206,837.00 | 0.00 | 0.00 % | 17,236.42 | 0.00 | 0.00 % |
| 46990 | Other State Revenues | 52,000.00 | (4,885.17) | 9.39 % | 4,333.33 | (4,118.69) | 95.05 % |
| 47220 | Civil Defense Reimbursement | 55,500.00 | (16,000.00) | 28.83 % | 4,625.00 | 0.00 | 0.00 % |
| 47235 | Homeland Security Grants | 13,675.00 | 0.00 | 0.00 % | 1,139.58 | 0.00 | 0.00 % |
| 47590 | Other Federal Through State | 40,333.00 | (23,527.00) | 58.33 % | 3,361.08 | 0.00 | 0.00 % |
| 48130 | Contributions | 10,000.00 | (5,000.00) | 50.00 % | 833.33 | 0.00 | 0.00 % |
| 48140 | Contracted Services | 25,000.00 | 0.00 | 0.00 % | 2,083.33 | 0.00 | 0.00 % |
| 48610 | Donations | 16,000.00 | (10,501.47) | 65.63 % | 1,333.33 | (488.00) | 36.60 % |
| 48990 | Other | 0.00 | (12,347.21) | 0.00 % | 0.00 | 0.00 | 0.00 % |
| 49700 | Insurance Recovery | 20,408.00 | (27,007.35) | 132.34 % | 1,700.67 | 0.00 | 0.00 % |
| 49800 | Transfers In | 55,546.00 | 0.00 | 0.00 % | 4,628.83 | 0.00 | 0.00 % |
| | Total Revenues | 18,628,252.00 | (12,180,646.75) | 65.39 % | 1,552,354.33 | (983,486.60) | 63.35 % |
| Expenditures | | | | | | | |
| 51100 | County Commission | (207,782.00) | 125,007.37 | 60.16 % | (17,315.17) | 11,878.20 | 68.60 % |
| 51210 | Board Of Equalization | (2,600.00) | 0.00 | 0.00 % | (216.67) | 0.00 | 0.00 % |
| 51220 | Beer Board | (5,000.00) | 1,433.62 | 28.67 % | (416.67) | 0.00 | 0.00 % |
| 51240 | Other Boards And Committees | (7,150.00) | 3,000.00 | 41.96 % | (595.83) | 0.00 | 0.00 % |
| 51300 | County Mayor/Executive | (237,726.00) | 157,241.47 | 66.14 % | (19,810.50) | 16,016.50 | 80.85 % |
| 51310 | Personnel Office | (45,802.00) | 25,917.19 | 56.59 % | (3,816.83) | 1,217.07 | 31.89 % |
| 51400 | County Attorney | (155,000.00) | 149,811.03 | 96.65 % | (12,916.67) | 20,000.00 | 154.84 % |
| 51500 | Election Commission | (933,856.00) | 626,047.66 | 67.04 % | (77,821.33) | 105,651.59 | 135.76 % |
| 51600 | Register Of Deeds | (310,478.00) | 227,598.11 | 73.31 % | (25,873.17) | 21,479.57 | 83.02 % |
| 51720 | Planning | (169,242.00) | 98,879.42 | 58.42 % | (14,103.50) | 10,969.58 | 77.78 % |
| 51750 | Codes Compliance | (316,152.00) | 178,884.03 | 56.58 % | (26,346.00) | 21,211.08 | 80.51 % |
| 51760 | Geographical Information Systems | (68,598.00) | 47,958.34 | 69.91 % | (5,716.50) | 4,787.85 | 83.75 % |
| 51800 | County Buildings | (1,278,624.00) | 945,979.79 | 73.98 % | (106,552.00) | 75,973.33 | 71.30 % |
| 51900 | Other General Administration | (302,500.00) | 274,182.41 | 90.64 % | (25,208.33) | 797.14 | 3.16 % |
| 51910 | Preservation Of Records | (1,000.00) | 0.00 | 0.00 % | (83.33) | 0.00 | 0.00 % |

Template Name: LGC Defined
Created by: LGC

Loudon County Finance
Summary Financial Statement
March 2020

User:
Date/Time:

Tracy Blair
4/1/2020 12:16 PM
Page 4 of 27

| 101 General | | Year-To-Date | | | Month-To-Date | | |
|-------------|---------------------------------------|-----------------|--------------|-------------|------------------|------------|----------|
| Account | Description | Budget Estimate | Actual | % of Budget | Estimate Avg/Mth | Actual | % of Avg |
| 52100 | Accounting And Budgeting | (656,361.00) | 453,964.15 | 69.16 % | (54,696.75) | 42,847.29 | 78.34 % |
| 52200 | Purchasing | (259,726.00) | 179,351.34 | 69.05 % | (21,643.83) | 19,806.34 | 91.51 % |
| 52300 | Property Assessor's Office | (438,263.00) | 292,668.64 | 66.78 % | (36,521.92) | 27,801.36 | 76.12 % |
| 52400 | County Trustee's Office | (378,668.00) | 274,113.63 | 72.39 % | (31,555.67) | 23,449.50 | 74.31 % |
| 52500 | County Clerk's Office | (645,050.00) | 430,798.31 | 66.79 % | (53,754.17) | 40,798.04 | 75.90 % |
| 52600 | Data Processing | (190,253.00) | 139,605.06 | 73.38 % | (15,854.42) | 18,562.65 | 117.08 % |
| 53100 | Circuit Court | (456,313.00) | 321,359.50 | 70.43 % | (38,026.08) | 31,066.94 | 81.70 % |
| 53300 | General Sessions Court | (714,705.00) | 470,808.13 | 65.87 % | (59,558.75) | 46,261.44 | 77.67 % |
| 53310 | General Sessions Judge | (471,761.00) | 348,551.45 | 73.88 % | (39,313.42) | 38,978.16 | 99.15 % |
| 53400 | Chancery Court | (295,728.00) | 214,011.75 | 72.37 % | (24,644.00) | 21,210.14 | 86.07 % |
| 53500 | Juvenile Court | (321,508.00) | 223,103.26 | 69.39 % | (26,792.33) | 22,365.99 | 83.48 % |
| 53700 | Judicial Commissioners | (66,400.00) | 44,157.60 | 66.50 % | (5,533.33) | 4,692.42 | 84.80 % |
| 53900 | Other Administration Of Justice | (18,760.00) | 10,583.64 | 56.42 % | (1,563.33) | 1,891.00 | 120.96 % |
| 53920 | Courtroom Security | (2,000.00) | 2,324.10 | 116.21 % | (166.67) | 500.00 | 300.00 % |
| 53930 | Victim Assistance Programs | (22,000.00) | 13,263.44 | 60.29 % | (1,833.33) | 3,088.17 | 168.45 % |
| 54110 | Sheriff's Department | (5,367,717.00) | 3,758,351.71 | 70.02 % | (447,309.75) | 369,983.74 | 82.71 % |
| 54120 | Special Patrols | (20,000.00) | 1,768.42 | 8.84 % | (1,666.67) | 0.00 | 0.00 % |
| 54130 | Traffic Control | (34,500.00) | 20,506.01 | 59.44 % | (2,875.00) | 1,413.92 | 49.18 % |
| 54160 | Administration Of The Sexual Offender | (1,500.00) | 89.00 | 5.93 % | (125.00) | 0.00 | 0.00 % |
| 54210 | Jail | (4,270,428.00) | 2,344,821.90 | 54.91 % | (355,869.00) | 244,513.74 | 68.71 % |
| 54320 | Rural Fire Protection | (240,000.00) | 240,000.00 | 100.00 % | (20,000.00) | 0.00 | 0.00 % |
| 54410 | Civil Defense | (221,717.00) | 137,629.84 | 62.07 % | (18,476.42) | 14,532.11 | 78.65 % |
| 54490 | Other Emergency Management | (29,675.00) | 29,674.28 | 100.00 % | (2,472.92) | 13,674.28 | 552.96 % |
| 54610 | County Coroner/Medical Examiner | (109,000.00) | 109,000.00 | 100.00 % | (9,083.33) | 0.00 | 0.00 % |
| 54900 | Other Public Safety | (541,500.00) | 541,500.00 | 100.00 % | (45,125.00) | 0.00 | 0.00 % |
| 55110 | Local Health Center | (42,241.00) | 28,072.89 | 66.46 % | (3,520.08) | 3,636.02 | 103.29 % |
| 55120 | Rabies And Animal Control | (471,068.00) | 318,701.98 | 67.66 % | (39,255.67) | 24,733.78 | 63.01 % |
| 55190 | Other Local Health Services | (436,300.00) | 225,647.83 | 51.72 % | (36,358.33) | 23,504.85 | 64.65 % |
| 55900 | Other Public Health And Welfare | (20,000.00) | 20,000.00 | 100.00 % | (1,666.67) | 0.00 | 0.00 % |
| 56100 | Adult Activities | (3,000.00) | 3,000.00 | 100.00 % | (250.00) | 0.00 | 0.00 % |
| 56300 | Senior Citizens Assistance | (279,588.00) | 181,471.16 | 64.91 % | (23,299.00) | 19,177.17 | 82.31 % |
| 57100 | Agricultural Extension Service | (178,389.00) | 173,966.68 | 97.52 % | (14,865.75) | 278.68 | 1.87 % |
| 57500 | Soil Conservation | (21,335.00) | 12,815.26 | 60.07 % | (1,777.92) | 913.87 | 51.40 % |
| 57700 | Flood Control | (2,000.00) | 2,000.00 | 100.00 % | (166.67) | 0.00 | 0.00 % |
| 57800 | Storm Water Management | (4,000.00) | 3,460.00 | 86.50 % | (333.33) | 0.00 | 0.00 % |
| 58110 | Tourism | (145,000.00) | 145,202.78 | 100.14 % | (12,083.33) | 0.00 | 0.00 % |
| 58120 | Industrial Development | (166,430.00) | 166,429.48 | 100.00 % | (13,869.17) | 0.00 | 0.00 % |
| 58130 | Housing And Urban Development | (6,750.00) | 6,000.00 | 88.89 % | (562.50) | 0.00 | 0.00 % |
| 58300 | Veteran's Services | (55,656.00) | 34,555.57 | 62.09 % | (4,638.00) | 3,904.65 | 84.19 % |

Template Name: LGC Defined
Created by: LGC

Loudon County Finance
Summary Financial Statement
March 2020

User:
Date/Time:

Tracy Blair
4/1/2020 12:16 PM
Page 5 of 27

| 101 General | | Year-To-Date | | | Month-To-Date | | |
|--------------|---------------------------------|------------------------|----------------------|----------------|-----------------------|---------------------|-----------------|
| Account | Description | Budget Estimate | Actual | % of Budget | Estimate Avg/Mth | Actual | % of Avg |
| 58500 | Contributions To Other Agencies | (83,100.00) | 83,100.00 | 100.00 % | (6,925.00) | 0.00 | 0.00 % |
| 58600 | Employee Benefits | (2,500.00) | 62,071.00 | 2,482.84 % | (208.33) | 200.00 | 96.00 % |
| 58900 | Miscellaneous | (330,000.00) | 167,112.62 | 50.64 % | (27,500.00) | 0.00 | 0.00 % |
| 82110 | General Government | (50,000.00) | 0.00 | 0.00 % | (4,166.67) | 0.00 | 0.00 % |
| 99100 | Transfers Out | (37,400.00) | 0.00 | 0.00 % | (3,116.67) | 0.00 | 0.00 % |
| | Total Expenditures | (22,149,800.00) | 15,097,552.85 | 68.16 % | (1,845,816.67) | 1,353,768.16 | 73.34 % |
| Total | 101 General | (3,521,548.00) | 2,916,906.10 | 82.83 % | (293,462.33) | 370,281.56 | 126.18 % |

Template Name: LGC Defined
Created by: LGC

Loudon County Finance
Summary Financial Statement
March 2020

User:
Date/Time:

Tracy Blair
4/1/2020 12:16 PM
Page 6 of 27

| 112 Courthouse & Jail Maintenance | | Year-To-Date | | | Month-To-Date | | |
|-----------------------------------|--|---------------------|--------------------|------------------|--------------------|--------------------|-----------------|
| Account | Description | Budget Estimate | Actual | % of Budget | Estimate Avg/Mth | Actual | % of Avg |
| Revenues | | | | | | | |
| 40266 | Litigation Tax-Jail, Wrkhse, | 100,000.00 | (84,728.89) | 84.73 % | 8,333.33 | (10,450.53) | 125.41 % |
| | Total Revenues | 100,000.00 | (84,728.89) | 84.73 % | 8,333.33 | (10,450.53) | 125.41 % |
| Expenditures | | | | | | | |
| 58900 | Miscellaneous | (2,000.00) | 751.58 | 37.58 % | (166.67) | 0.00 | 0.00 % |
| 99100 | Transfers Out | (125,000.00) | 0.00 | 0.00 % | (10,416.67) | 0.00 | 0.00 % |
| | Total Expenditures | (127,000.00) | 751.58 | 0.59 % | (10,583.33) | 0.00 | 0.00 % |
| Total | 112 Courthouse & Jail Maintenance | (27,000.00) | (83,977.31) | -311.03 % | (2,250.00) | (10,450.53) | -464.47 |

Template Name: LGC Defined
Created by: LGC

Loudon County Finance
Summary Financial Statement
March 2020

User:
Date/Time:

Tracy Blair
4/1/2020 12:16 PM
Page 7 of 27

| 114 Law Library | | | Year-To-Date | | | Month-To-Date | |
|---------------------|----------------------------------|-------------------|-------------------|------------------|------------------|-----------------|------------------|
| Account | Description | Budget Estimate | Actual | % of Budget | Estimate Avg/Mth | Actual | % of Avg |
| Revenues | | | | | | | |
| 40260 | Litigation Tax - Special Purpose | 4,500.00 | (3,413.77) | 75.86 % | 375.00 | (420.56) | 112.15 % |
| | Total Revenues | 4,500.00 | (3,413.77) | 75.86 % | 375.00 | (420.56) | 112.15 % |
| Expenditures | | | | | | | |
| 56500 | Libraries | (4,600.00) | 2,182.71 | 47.45 % | (383.33) | 54.98 | 14.34 % |
| 58900 | Miscellaneous | (150.00) | 30.23 | 20.15 % | (12.50) | 0.00 | 0.00 % |
| | Total Expenditures | (4,750.00) | 2,212.94 | 46.59 % | (395.83) | 54.98 | 13.89 % |
| Total | 114 Law Library | (250.00) | (1,200.83) | -480.33 % | (20.83) | (365.58) | -1,754.78 |

| 115 Public Library | | Year-To-Date | | | Month-To-Date | | |
|---------------------|--|---------------------|---------------------|-----------------|--------------------|--------------------|----------------|
| Account | Description | Budget Estimate | Actual | % of Budget | Estimate Avg/Mth | Actual | % of Avg |
| Revenues | | | | | | | |
| 40110 | Current Property Tax | 308,868.00 | (194,220.88) | 62.88 % | 25,739.00 | 0.00 | 0.00 % |
| 40120 | Trustee's Collections - Prior Year | 3,500.00 | (1,059.03) | 30.26 % | 291.67 | 1,734.66 | -594.74 % |
| 40125 | Trustee's Collections - Bankruptcy | 200.00 | (23.50) | 11.75 % | 16.67 | 0.00 | 0.00 % |
| 40130 | Cir Clk/Clk & Master Collections-Pr Yr | 2,000.00 | (2,936.88) | 146.84 % | 166.67 | (234.16) | 140.50 % |
| 40140 | Interest And Penalty | 900.00 | (349.80) | 38.87 % | 75.00 | 0.00 | 0.00 % |
| 40163 | Payments In Lieu Of Taxes - Other | 10,300.00 | (10,324.81) | 100.24 % | 858.33 | (10,324.81) | 1,202.89 % |
| 40320 | Bank Excise Tax | 400.00 | (2,401.21) | 600.30 % | 33.33 | (2,401.21) | 7,203.63 % |
| 43350 | Copy Fees | 4,950.00 | (3,779.40) | 76.35 % | 412.50 | (358.70) | 86.96 % |
| 43360 | Library Fees | 4,600.00 | (2,850.88) | 61.98 % | 383.33 | (228.35) | 59.57 % |
| 44130 | Sale Of Materials And Supplies | 150.00 | (193.50) | 129.00 % | 12.50 | (14.50) | 116.00 % |
| 44160 | Retirees' Insurance Payments | 1,171.00 | (6,285.90) | 536.80 % | 97.58 | (313.27) | 321.03 % |
| 44170 | Miscellaneous Refunds | 0.00 | (192.30) | 0.00 % | 0.00 | 0.00 | 0.00 % |
| 44570 | Contributions & Gifts | 1,017.00 | (1,204.13) | 118.40 % | 84.75 | (26.50) | 31.27 % |
| 47590 | Other Federal Through State | 1,327.00 | 0.00 | 0.00 % | 110.58 | 0.00 | 0.00 % |
| 48130 | Contributions | 31,415.00 | (23,237.50) | 73.97 % | 2,617.92 | (9,550.00) | 364.79 % |
| 48610 | Donations | 16,163.00 | (24,563.00) | 151.97 % | 1,346.92 | (200.00) | 14.85 % |
| | Total Revenues | 386,961.00 | (273,622.72) | 70.71 % | 32,246.75 | (21,916.84) | 67.97 % |
| Expenditures | | | | | | | |
| 56500 | Libraries | (374,114.00) | 277,467.40 | 74.17 % | (31,176.17) | 23,260.02 | 74.61 % |
| 58900 | Miscellaneous | 0.00 | 0.00 | 0.00 % | 0.00 | 0.00 | 0.00 % |
| | Total Expenditures | (374,114.00) | 277,467.40 | 74.17 % | (31,176.17) | 23,260.02 | 74.61 % |
| Total | 115 Public Library | 12,847.00 | 3,844.68 | -29.93 % | 1,070.58 | 1,343.18 | -125.46 |

| 116 Solid Waste/Sanitation | | Year-To-Date | | | Month-To-Date | | |
|----------------------------|-----------------------------------|---------------------|---------------------|-----------------|--------------------|--------------------|------------------|
| Account | Description | Budget Estimate | Actual | % of Budget | Estimate Avg/Mth | Actual | % of Avg |
| Revenues | | | | | | | |
| 40210 | Local Option Sales Tax | 656,260.00 | (603,637.19) | 91.98 % | 54,688.33 | (64,620.53) | 118.16 % |
| 44145 | Sale Of Recycled Materials | 131,000.00 | (40,605.88) | 31.00 % | 10,916.67 | (3,686.60) | 33.77 % |
| 44160 | Retirees' Insurance Payments | 82.00 | (343.44) | 418.83 % | 6.83 | 0.00 | 0.00 % |
| 44170 | Miscellaneous Refunds | 0.00 | (307.65) | 0.00 % | 0.00 | 0.00 | 0.00 % |
| 46170 | Solid Waste Grants | 50,000.00 | (23,068.43) | 46.14 % | 4,166.67 | 0.00 | 0.00 % |
| 46430 | Litter Program | 49,100.00 | (24,778.78) | 50.47 % | 4,091.67 | (3,167.13) | 77.40 % |
| 46990 | Other State Revenues | 14,500.00 | (6,720.00) | 46.34 % | 1,208.33 | (6,720.00) | 556.14 % |
| | Total Revenues | 900,942.00 | (699,461.37) | 77.64 % | 75,078.50 | (78,194.26) | 104.15 % |
| Expenditures | | | | | | | |
| 55720 | Sanitation Education/Information | (49,100.00) | 29,310.20 | 59.69 % | (4,091.67) | (870.30) | -21.27 % |
| 55732 | Convenience Centers | (823,785.00) | 626,951.93 | 76.11 % | (68,648.75) | 41,536.08 | 60.51 % |
| 55739 | Other Waste Collection | (50,000.00) | 21,851.00 | 43.70 % | (4,166.67) | 0.00 | 0.00 % |
| | Total Expenditures | (922,885.00) | 678,113.13 | 73.48 % | (76,907.08) | 40,665.78 | 52.88 % |
| Total | 116 Solid Waste/Sanitation | (21,943.00) | (21,348.24) | -97.29 % | (1,828.58) | (37,528.48) | -2,052.33 |

Template Name: LGC Defined
Created by: LGC

Loudon County Finance
Summary Financial Statement
March 2020

User:
Date/Time:

Tracy Blair
4/1/2020 12:16 PM
Page 10 of 27

| 119 Industrial/Economic Development | | Year-To-Date | | | Month-To-Date | | |
|-------------------------------------|--|---------------------|---------------------|-------------------|--------------------|-------------------|-----------------|
| Account | Description | Budget Estimate | Actual | % of Budget | Estimate Avg/Mth | Actual | % of Avg |
| Revenues | | | | | | | |
| 44120 | Lease/Rentals | 21,295.00 | (11,925.00) | 56.00 % | 1,774.58 | (1,325.00) | 74.67 % |
| 44540 | Sale Of Property | 579,350.00 | (579,350.00) | 100.00 % | 48,279.17 | 0.00 | 0.00 % |
| | Total Revenues | 600,645.00 | (591,275.00) | 98.44 % | 50,053.75 | (1,325.00) | 2.65 % |
| Expenditures | | | | | | | |
| 58120 | Industrial Development | (588,650.00) | 213,161.66 | 36.21 % | (49,054.17) | 0.00 | 0.00 % |
| | Total Expenditures | (588,650.00) | 213,161.66 | 36.21 % | (49,054.17) | 0.00 | 0.00 % |
| Total | 119 Industrial/Economic Development | 11,995.00 | (378,113.34) | 3,152.26 % | 999.58 | (1,325.00) | 132.56 % |

Template Name: LGC Defined
Created by: LGC

Loudon County Finance
Summary Financial Statement
March 2020

User:
Date/Time:

Tracy Blair
4/1/2020 12:16 PM
Page 11 of 27

| 122 Drug Control | | Year-To-Date | | | Month-To-Date | | |
|---------------------|------------------------------------|---------------------|--------------------|-----------------|--------------------|-------------------|----------------|
| Account | Description | Budget Estimate | Actual | % of Budget | Estimate Avg/Mth | Actual | % of Avg |
| Revenues | | | | | | | |
| 42240 | Drug Control Fines | 15,000.00 | (12,200.15) | 81.33 % | 1,250.00 | (3,589.10) | 287.13 % |
| 42340 | Drug Control Fines | 6,000.00 | (3,041.42) | 50.69 % | 500.00 | (192.37) | 38.47 % |
| 42865 | Drug Task Force Forfeitures And | 25,000.00 | 0.00 | 0.00 % | 2,083.33 | 0.00 | 0.00 % |
| 42910 | Proceeds From Confiscated Property | 25,000.00 | 0.00 | 0.00 % | 2,083.33 | 0.00 | 0.00 % |
| 44570 | Contributions & Gifts | 20,000.00 | (16,753.50) | 83.77 % | 1,666.67 | (750.50) | 45.03 % |
| 47990 | Other Direct Federal Revenue | 0.00 | (0.42) | 0.00 % | 0.00 | 0.00 | 0.00 % |
| | Total Revenues | 91,000.00 | (31,995.49) | 35.16 % | 7,583.33 | (4,531.97) | 59.76 % |
| Expenditures | | | | | | | |
| 54150 | Drug Enforcement | (142,431.00) | 86,210.37 | 60.53 % | (11,869.25) | 0.00 | 0.00 % |
| | Total Expenditures | (142,431.00) | 86,210.37 | 60.53 % | (11,869.25) | 0.00 | 0.00 % |
| Total | 122 Drug Control | (51,431.00) | 54,214.88 | 105.41 % | (4,285.92) | (4,531.97) | -105.74 |

Template Name: LGC Defined
Created by: LGC

Loudon County Finance
Summary Financial Statement
March 2020

User:
Date/Time:

Tracy Blair
4/1/2020 12:16 PM
Page 12 of 27

| 128 Other Special Revenue Fund | | | Year-To-Date | | | Month-To-Date | |
|--------------------------------|---------------------------------------|-------------------|--------------|-----------------|------------------|---------------|---------------|
| Account | Description | Budget Estimate | Actual | % of Budget | Estimate Avg/Mth | Actual | % of Avg |
| Revenues | | | | | | | |
| 47700 | Asset Forfeiture Funds | 1,000.00 | 0.00 | 0.00 % | 83.33 | 0.00 | 0.00 % |
| | Total Revenues | 1,000.00 | 0.00 | 0.00 % | 83.33 | 0.00 | 0.00 % |
| Expenditures | | | | | | | |
| 54150 | Drug Enforcement | (1,000.00) | 0.00 | 0.00 % | (83.33) | 0.00 | 0.00 % |
| | Total Expenditures | (1,000.00) | 0.00 | 0.00 % | (83.33) | 0.00 | 0.00 % |
| Total | 128 Other Special Revenue Fund | 0.00 | 0.00 | 100.00 % | 0.00 | 0.00 | 0.00 % |

Loudon County Finance
Summary Financial Statement
March 2020

| 131 Highway/Public Works | | Year-To-Date | | | Month-To-Date | | |
|--------------------------|--|-----------------------|-----------------------|-----------------|---------------------|---------------------|----------------|
| Account | Description | Budget Estimate | Actual | % of Budget | Estimate Avg/Mth | Actual | % of Avg |
| Revenues | | | | | | | |
| 40110 | Current Property Tax | 548,903.00 | (345,168.55) | 62.88 % | 45,741.92 | 0.00 | 0.00 % |
| 40120 | Trustee's Collections - Prior Year | 15,000.00 | (857.65) | 5.72 % | 1,250.00 | 3,975.88 | -318.07 % |
| 40125 | Bankruptcy | 540.00 | (43.83) | 8.12 % | 45.00 | 0.00 | 0.00 % |
| 40130 | Cir Clk/Clk & Master Collections-Pr Yr | 5,500.00 | (5,228.82) | 95.07 % | 458.33 | (416.15) | 90.80 % |
| 40140 | Interest And Penalty | 2,000.00 | (622.72) | 31.14 % | 166.67 | 0.00 | 0.00 % |
| 40163 | Payments In Lieu Of Taxes - Other | 18,155.00 | (18,196.77) | 100.23 % | 1,512.92 | (18,196.77) | 1,202.76 % |
| 40280 | Mineral Severance Tax | 60,000.00 | (30,527.29) | 50.88 % | 5,000.00 | 0.00 | 0.00 % |
| 40320 | Bank Excise Tax | 1,000.00 | (4,267.30) | 426.73 % | 83.33 | (4,267.30) | 5,120.76 % |
| 44130 | Sale Of Materials And Supplies | 22,711.00 | (12,101.40) | 53.28 % | 1,892.58 | (682.00) | 36.04 % |
| 44145 | Sale Of Recycled Materials | 0.00 | (205.20) | 0.00 % | 0.00 | 0.00 | 0.00 % |
| 44160 | Retirees' Insurance Payments | 25,535.00 | (13,579.62) | 53.18 % | 2,127.92 | (635.79) | 29.88 % |
| 44170 | Miscellaneous Refunds | 3,000.00 | (2,509.38) | 83.65 % | 250.00 | 0.00 | 0.00 % |
| 44530 | Sale Of Equipment | 8,000.00 | 0.00 | 0.00 % | 666.67 | 0.00 | 0.00 % |
| 46410 | Bridge Program | 410,000.00 | 0.00 | 0.00 % | 34,166.67 | 0.00 | 0.00 % |
| 46420 | State Aid Program | 595,585.00 | 0.00 | 0.00 % | 49,632.08 | 0.00 | 0.00 % |
| 46440 | Tennessee Industrial Infrastructure | 230,653.00 | 0.00 | 0.00 % | 19,221.08 | 0.00 | 0.00 % |
| 46920 | Gasoline And Motor Fuel Tax | 2,263,671.00 | (1,571,345.77) | 69.42 % | 188,639.25 | (183,583.74) | 97.32 % |
| 46930 | Petroleum Special Tax | 31,458.00 | (23,356.91) | 74.25 % | 2,621.50 | (2,919.61) | 111.37 % |
| 47590 | Other Federal Through State | 943,618.00 | 0.00 | 0.00 % | 78,634.83 | 0.00 | 0.00 % |
| 49600 | Proceeds From Sale Of Capital Assets | 156,000.00 | 0.00 | 0.00 % | 13,000.00 | 0.00 | 0.00 % |
| | Total Revenues | 5,341,329.00 | (2,028,011.21) | 37.97 % | 445,110.75 | (206,725.48) | 46.44 % |
| Expenditures | | | | | | | |
| 61000 | Administration | (851,261.00) | 591,913.33 | 69.53 % | (70,938.42) | 63,158.59 | 89.03 % |
| 62000 | Highway And Bridge Maintenance | (1,226,670.00) | 1,206,722.28 | 98.37 % | (102,222.50) | (16,740.10) | -16.38 % |
| 63100 | Operation And Maintenance Of | (302,048.00) | 254,110.76 | 84.13 % | (25,170.67) | 10,580.60 | 42.04 % |
| 65000 | Other Charges | (186,993.00) | 163,777.34 | 87.58 % | (15,582.75) | 964.69 | 6.19 % |
| 66000 | Employee Benefits | (477,282.00) | 348,908.83 | 73.10 % | (39,773.50) | 32,814.22 | 82.50 % |
| 68000 | Capital Outlay | (2,655,686.00) | 721,041.04 | 27.15 % | (221,307.17) | 0.00 | 0.00 % |
| 99100 | Transfers Out | (14,082.00) | 0.00 | 0.00 % | (1,173.50) | 0.00 | 0.00 % |
| | Total Expenditures | (5,714,022.00) | 3,286,473.58 | 57.52 % | (476,168.50) | 90,778.00 | 19.06 % |
| Total | 131 Highway/Public Works | (372,693.00) | 1,258,462.37 | 337.67 % | (31,057.75) | (115,947.48) | -373.33 |

Loudon County Finance
Summary Financial Statement
March 2020

| 141 General Purpose School | | Year-To-Date | | | Month-To-Date | | |
|----------------------------|--|----------------------|------------------------|----------------|---------------------|-----------------------|----------------|
| Account | Description | Budget Estimate | Actual | % of Budget | Estimate Avg/Mth | Actual | % of Avg |
| Revenues | | | | | | | |
| 40110 | Current Property Tax | 9,691,448.00 | (6,093,124.89) | 62.87 % | 807,620.67 | 0.00 | 0.00 % |
| 40120 | Trustee's Collections - Prior Year | 187,000.00 | 33,646.76 | -17.99 % | 15,583.33 | 109,390.89 | -701.97 % |
| 40125 | Bankruptcy | 20,000.00 | (779.25) | 3.90 % | 1,666.67 | 0.00 | 0.00 % |
| 40130 | Cir Clk/Clk & Master Collections-Pr Yr | 190,000.00 | (90,857.34) | 47.82 % | 15,833.33 | (7,250.88) | 45.80 % |
| 40140 | Interest And Penalty | 44,000.00 | (10,926.74) | 24.83 % | 3,666.67 | 0.00 | 0.00 % |
| 40163 | Payments In Lieu Of Taxes - Other | 324,645.00 | (325,396.79) | 100.23 % | 27,053.75 | (325,396.79) | 1,202.78 % |
| 40210 | Local Option Sales Tax | 4,000,000.00 | (3,105,136.90) | 77.63 % | 333,333.33 | (359,237.89) | 107.77 % |
| 40275 | Mixed Drink Tax | 25,000.00 | (27,324.60) | 109.30 % | 2,083.33 | (3,169.51) | 152.14 % |
| 40320 | Bank Excise Tax | 20,000.00 | (75,341.48) | 376.71 % | 1,666.67 | (75,341.48) | 4,520.49 % |
| 40350 | Interstate Telecommunications Tax | 2,900.00 | 0.00 | 0.00 % | 241.67 | 0.00 | 0.00 % |
| 41110 | Marriage Licenses | 1,200.00 | (893.00) | 74.42 % | 100.00 | (109.25) | 109.25 % |
| 43570 | Receipts From Individual Schools | 15,000.00 | (9,815.00) | 65.43 % | 1,250.00 | (1,255.00) | 100.40 % |
| 44110 | Investment Income | 30,000.00 | (66,705.10) | 222.35 % | 2,500.00 | 0.00 | 0.00 % |
| 44130 | Sale Of Materials And Supplies | 0.00 | (203.00) | 0.00 % | 0.00 | 0.00 | 0.00 % |
| 44146 | E-Rate Funding | 336,847.00 | (336,847.18) | 100.00 % | 28,070.58 | 0.00 | 0.00 % |
| 44160 | Retirees' Insurance Payments | 62,400.00 | (56,911.69) | 91.20 % | 5,200.00 | (2,752.05) | 52.92 % |
| 44170 | Miscellaneous Refunds | 2,000.00 | (593.96) | 29.70 % | 166.67 | (35.00) | 21.00 % |
| 46511 | Basic Education Program | 21,746,000.00 | (17,396,800.00) | 80.00 % | 1,812,166.67 | (2,174,600.00) | 120.00 % |
| 46515 | Early Childhood Education | 734,715.00 | (474,525.72) | 64.59 % | 61,226.25 | (67,013.15) | 109.45 % |
| 46590 | Other State Education Funds | 368,092.00 | (183,623.83) | 49.89 % | 30,674.33 | (31,525.24) | 102.77 % |
| 46591 | Coordinated School Health | 160,000.00 | (86,924.48) | 54.33 % | 13,333.33 | (14,619.33) | 109.64 % |
| 46594 | Family Resource Centers | 30,211.00 | (29,611.65) | 98.02 % | 2,517.58 | 0.00 | 0.00 % |
| 46610 | Career Ladder Program | 88,600.00 | (36,536.43) | 41.24 % | 7,383.33 | 0.00 | 0.00 % |
| 46851 | State Revenue Sharing -T.V.A. | 1,150,000.00 | (621,306.91) | 54.03 % | 95,833.33 | (3,309.78) | 3.45 % |
| 46980 | Other State Grants | 10,000.00 | (39,759.00) | 397.59 % | 833.33 | 0.00 | 0.00 % |
| 46981 | Safe Schools | 85,500.00 | (31,686.72) | 37.06 % | 7,125.00 | 0.00 | 0.00 % |
| 46990 | Other State Revenues | 29,759.00 | (7,268.35) | 24.42 % | 2,479.92 | 0.00 | 0.00 % |
| 47131 | Vocational Educ - Basic Grants To | 5,000.00 | 0.00 | 0.00 % | 416.67 | 0.00 | 0.00 % |
| 47143 | Special Education - Grants To States | 45,000.00 | (45,000.00) | 100.00 % | 3,750.00 | 0.00 | 0.00 % |
| 47147 | Safe And Drug-Free Schools-St Grants | 264,982.00 | (120,627.61) | 45.52 % | 22,081.83 | (29,553.77) | 133.84 % |
| 47590 | Other Federal Through State | 212,069.00 | (98,636.66) | 46.51 % | 17,672.42 | (13,508.10) | 76.44 % |
| 47640 | Rotc Reimbursement | 66,000.00 | (51,688.12) | 78.32 % | 5,500.00 | 0.00 | 0.00 % |
| 48610 | Donations | 32,821.00 | (22,071.51) | 67.25 % | 2,735.08 | 0.00 | 0.00 % |
| 49700 | Insurance Recovery | 629,238.00 | (630,620.70) | 100.22 % | 52,436.50 | 0.00 | 0.00 % |
| | Total Revenues | 40,610,427.00 | (30,043,897.85) | 73.98 % | 3,384,202.25 | (2,999,286.33) | 88.63 % |
| Expenditures | | | | | | | |
| 71100 | Regular Instruction Program | (22,556,309.00) | 14,717,709.11 | 65.25 % | (1,879,692.42) | 1,765,660.86 | 93.93 % |

Template Name: LGC Defined
Created by: LGC

Loudon County Finance
Summary Financial Statement
March 2020

User:
Date/Time:

Tracy Blair
4/1/2020 12:16 PM
Page 15 of 27

| 141 General Purpose School | | Year-To-Date | | | Month-To-Date | | |
|----------------------------|-----------------------------------|------------------------|-----------------------|-----------------|-----------------------|---------------------|----------------|
| Account | Description | Budget Estimate | Actual | % of Budget | Estimate Avg/Mth | Actual | % of Avg |
| 71200 | Special Education Program | (3,307,729.00) | 2,038,331.40 | 61.62 % | (275,644.08) | 245,521.42 | 89.07 % |
| 71300 | Vocational Education Program | (1,255,647.00) | 838,070.86 | 66.74 % | (104,637.25) | 91,059.24 | 87.02 % |
| 72110 | Attendance | (53,257.00) | 38,024.86 | 71.40 % | (4,438.08) | 4,158.09 | 93.69 % |
| 72120 | Health Services | (591,267.00) | 363,415.81 | 61.46 % | (49,272.25) | 42,375.09 | 86.00 % |
| 72130 | Other Student Support | (1,249,803.00) | 865,318.20 | 69.24 % | (104,150.25) | 97,626.34 | 93.74 % |
| 72210 | Regular Instruction Program | (1,587,761.00) | 1,042,574.04 | 65.66 % | (132,313.42) | 122,576.90 | 92.64 % |
| 72220 | Special Education Program | (731,277.00) | 375,954.67 | 51.41 % | (60,939.75) | 43,504.15 | 71.39 % |
| 72230 | Vocational Education Program | (187,791.00) | 141,745.48 | 75.48 % | (15,649.25) | 12,608.76 | 80.57 % |
| 72250 | Technology | (947,246.00) | 704,367.81 | 74.36 % | (78,937.17) | 39,823.38 | 50.45 % |
| 72310 | Board Of Education | (703,288.00) | 533,924.12 | 75.92 % | (58,607.33) | 4,123.15 | 7.04 % |
| 72320 | Office Of The Superintendent | (507,121.00) | 385,022.79 | 75.92 % | (42,260.08) | 32,475.19 | 76.85 % |
| 72410 | Office Of The Principal | (1,213,441.00) | 919,778.59 | 75.80 % | (101,120.08) | 89,784.86 | 88.79 % |
| 72510 | Fiscal Services | (88,076.00) | 63,218.73 | 71.78 % | (7,339.67) | 6,968.01 | 94.94 % |
| 72610 | Operation Of Plant | (3,267,098.00) | 2,630,677.14 | 80.52 % | (272,258.17) | 102,146.89 | 37.52 % |
| 72620 | Maintenance Of Plant | (879,238.00) | 835,593.23 | 95.04 % | (73,269.83) | 80,903.88 | 110.42 % |
| 72710 | Transportation | (1,927,901.00) | 1,485,212.98 | 77.04 % | (160,658.42) | 172,974.65 | 107.67 % |
| 73300 | Community Services | (653,615.00) | 426,705.52 | 65.28 % | (54,467.92) | 57,053.95 | 104.75 % |
| 73400 | Early Childhood Education | (811,181.00) | 560,810.30 | 69.14 % | (67,598.42) | 60,182.41 | 89.03 % |
| | Total Expenditures | (42,519,046.00) | 28,966,455.64 | 68.13 % | (3,543,253.83) | 3,071,527.22 | 86.69 % |
| Total | 141 General Purpose School | (1,908,619.00) | (1,077,442.21) | -56.45 % | (159,051.58) | 72,240.89 | 45.42 % |

| 142 School Federal Projects | | Year-To-Date | | | Month-To-Date | | |
|-----------------------------|---------------------------------------|-----------------------|-----------------------|-----------------|---------------------|--------------------|----------------|
| Account | Description | Budget Estimate | Actual | % of Budget | Estimate Avg/Mth | Actual | % of Avg |
| Revenues | | | | | | | |
| 47131 | Vocational Educ - Basic Grants To | 83,067.57 | (29,485.85) | 35.50 % | 6,922.30 | 0.00 | 0.00 % |
| 47141 | Title 1 Grants To Local Educ Agencies | 986,410.78 | (549,365.23) | 55.69 % | 82,200.90 | (4,918.29) | 5.98 % |
| 47143 | Special Education - Grants To States | 1,147,667.16 | (524,858.76) | 45.73 % | 95,638.93 | (11,241.67) | 11.75 % |
| 47144 | Education Edge | 0.00 | 0.00 | 0.00 % | 0.00 | 0.00 | 0.00 % |
| 47145 | Special Education Preschool Grants | 22,696.47 | (8,994.37) | 39.63 % | 1,891.37 | 0.00 | 0.00 % |
| 47146 | English Language Acquisition Grants | 22,028.59 | (8,715.28) | 39.56 % | 1,835.72 | 0.00 | 0.00 % |
| 47147 | Safe And Drug-Free Schools-St Grants | 57,493.37 | (21,298.49) | 37.05 % | 4,791.11 | (555.06) | 11.59 % |
| 47189 | Eisenhower Prof Development State | 174,592.89 | (74,446.97) | 42.64 % | 14,549.41 | (1,588.48) | 10.92 % |
| 47590 | Other Federal Through State | 25,845.00 | 0.00 | 0.00 % | 2,153.75 | 0.00 | 0.00 % |
| | Total Revenues | 2,519,801.83 | (1,217,164.95) | 48.30 % | 209,983.49 | (18,303.50) | 8.72 % |
| Expenditures | | | | | | | |
| 71100 | Regular Instruction Program | (756,512.35) | 487,449.13 | 64.43 % | (63,042.70) | 54,474.91 | 86.41 % |
| 71200 | Special Education Program | (698,704.47) | 390,438.03 | 55.88 % | (58,225.37) | 51,123.29 | 87.80 % |
| 71300 | Vocational Education Program | (51,867.57) | 45,506.55 | 87.74 % | (4,322.30) | 0.00 | 0.00 % |
| 72130 | Other Student Support | (64,357.46) | 32,433.45 | 50.40 % | (5,363.12) | 9,705.00 | 180.96 % |
| 72210 | Regular Instruction Program | (469,700.82) | 281,696.13 | 59.97 % | (39,141.74) | 27,488.77 | 70.23 % |
| 72220 | Special Education Program | (471,659.16) | 282,935.25 | 59.99 % | (39,304.93) | 31,507.92 | 80.16 % |
| 72230 | Vocational Education Program | (7,000.00) | 3,832.20 | 54.75 % | (583.33) | 418.48 | 71.74 % |
| | Total Expenditures | (2,519,801.83) | 1,524,290.74 | 60.49 % | (209,983.49) | 174,718.37 | 83.21 % |
| Total | 142 School Federal Projects | 0.00 | 307,125.79 | 100.00 % | 0.00 | 156,414.87 | 0.00 % |

Template Name: LGC Defined
Created by: LGC

Loudon County Finance
Summary Financial Statement
March 2020

User:
Date/Time:

Tracy Blair
4/1/2020 12:16 PM
Page 17 of 27

| 143 Central Cafeteria | | Year-To-Date | | | Month-To-Date | | |
|-----------------------|----------------------------------|-----------------------|-----------------------|-----------------|---------------------|---------------------|----------------|
| Account | Description | Budget Estimate | Actual | % of Budget | Estimate Avg/Mth | Actual | % of Avg |
| Revenues | | | | | | | |
| 43521 | Lunch Payments - Children | 430,000.00 | (281,553.26) | 65.48 % | 35,833.33 | 0.00 | 0.00 % |
| 43522 | Lunch Payments - Adults | 35,000.00 | (20,360.12) | 58.17 % | 2,916.67 | 0.00 | 0.00 % |
| 43523 | Income From Breakfast | 0.00 | (511.30) | 0.00 % | 0.00 | 0.00 | 0.00 % |
| 43525 | A La Carte Sales | 10,500.00 | (6,463.80) | 61.56 % | 875.00 | 0.00 | 0.00 % |
| 43570 | Receipts From Individual Schools | 100.00 | (194.41) | 194.41 % | 8.33 | 0.00 | 0.00 % |
| 44110 | Investment Income | 1,000.00 | (6,194.08) | 619.41 % | 83.33 | 0.00 | 0.00 % |
| 46520 | School Food Service | 25,000.00 | (22,170.49) | 88.68 % | 2,083.33 | 0.00 | 0.00 % |
| 46980 | Other State Grants | 12,000.00 | 0.00 | 0.00 % | 1,000.00 | 0.00 | 0.00 % |
| 47111 | USDA School Lunch Program | 1,174,500.00 | (742,403.39) | 63.21 % | 97,875.00 | (125,230.50) | 127.95 % |
| 47113 | Breakfast | 356,000.00 | (229,395.78) | 64.44 % | 29,666.67 | (37,262.33) | 125.60 % |
| 47114 | USDA - Other | 186,000.00 | (5,029.50) | 2.70 % | 15,500.00 | 0.00 | 0.00 % |
| 47590 | Other Federal Through State | 0.00 | (84,131.80) | 0.00 % | 0.00 | 0.00 | 0.00 % |
| 47990 | Other Direct Federal Revenue | 150,000.00 | (162,444.00) | 108.30 % | 12,500.00 | 0.00 | 0.00 % |
| | Total Revenues | 2,380,100.00 | (1,560,851.93) | 65.58 % | 198,341.67 | (162,492.83) | 81.93 % |
| Expenditures | | | | | | | |
| 73100 | Food Service | (2,380,100.00) | 1,911,316.37 | 80.30 % | (198,341.67) | 102,529.80 | 51.69 % |
| | Total Expenditures | (2,380,100.00) | 1,911,316.37 | 80.30 % | (198,341.67) | 102,529.80 | 51.69 % |
| Total 143 | Central Cafeteria | 0.00 | 350,464.44 | 100.00 % | 0.00 | (59,963.03) | 0.00 % |

Template Name: LGC Defined
Created by: LGC

Loudon County Finance
Summary Financial Statement
March 2020

User:
Date/Time:

Tracy Blair
4/1/2020 12:16 PM
Page 18 of 27

| 151 General Debt Service | | Year-To-Date | | | Month-To-Date | | |
|--------------------------|--|-----------------------|-----------------------|----------------|---------------------|--------------------|------------------|
| Account | Description | Budget Estimate | Actual | % of Budget | Estimate Avg/Mth | Actual | % of Avg |
| Revenues | | | | | | | |
| 40110 | Current Property Tax | 1,653,768.00 | (1,041,603.73) | 62.98 % | 137,814.00 | 0.00 | 0.00 % |
| 40120 | Trustee's Collections - Prior Year | 20,000.00 | (1,579.57) | 7.90 % | 1,666.67 | 8,256.85 | -495.41 % |
| 40125 | Bankruptcy | 1,000.00 | (115.56) | 11.56 % | 83.33 | 0.00 | 0.00 % |
| 40130 | Cir Clk/Clk & Master Collections-Pr Yr | 15,000.00 | (11,341.90) | 75.61 % | 1,250.00 | (1,253.94) | 100.32 % |
| 40140 | Interest And Penalty | 6,000.00 | (1,274.06) | 21.23 % | 500.00 | 0.00 | 0.00 % |
| 40163 | Payments In Lieu Of Taxes - Other | 84,810.00 | (84,897.52) | 100.10 % | 7,067.50 | (37,705.52) | 533.51 % |
| 40320 | Bank Excise Tax | 1,000.00 | (12,856.79) | 1,285.68 % | 83.33 | (12,856.79) | 5,428.15 % |
| 44110 | Investment Income | 3,000.00 | (22,920.14) | 764.00 % | 250.00 | 0.00 | 0.00 % |
| 44514 | Revenue From Joint Ventures (Govt | 27,000.00 | 0.00 | 0.00 % | 2,250.00 | 0.00 | 0.00 % |
| 48140 | Contracted Services | 234,420.00 | (50,868.00) | 21.70 % | 19,535.00 | 0.00 | 0.00 % |
| 49800 | Transfers In | 125,000.00 | 0.00 | 0.00 % | 10,416.67 | 0.00 | 0.00 % |
| | Total Revenues | 2,170,998.00 | (1,227,457.27) | 56.54 % | 180,916.50 | (43,559.40) | 24.08 % |
| Expenditures | | | | | | | |
| 82110 | General Government | (882,000.00) | 607,000.00 | 68.82 % | (73,500.00) | 565,000.00 | 768.71 % |
| 82210 | General Government | (563,240.00) | 292,346.20 | 51.90 % | (46,936.67) | 8,475.00 | 18.06 % |
| 82310 | General Government | (271,920.00) | 175,410.14 | 64.51 % | (22,660.00) | 16,956.00 | 74.83 % |
| | Total Expenditures | (1,717,160.00) | 1,074,756.34 | 62.59 % | (143,096.67) | 590,431.00 | 412.61 % |
| Total | 151 General Debt Service | 453,838.00 | (152,700.93) | 33.65 % | 37,819.83 | 546,871.60 | -1,445.99 |

Template Name: LGC Defined
Created by: LGC

Loudon County Finance
Summary Financial Statement
March 2020

User:
Date/Time:

Tracy Blair
4/1/2020 12:16 PM
Page 19 of 27

| 156 Education Debt Service | | Year-To-Date | | | Month-To-Date | | |
|----------------------------|--|-----------------------|-----------------------|------------------|---------------------|---------------------|----------------|
| Account | Description | Budget Estimate | Actual | % of Budget | Estimate Avg/Mth | Actual | % of Avg |
| Revenues | | | | | | | |
| 40110 | Current Property Tax | 3,318,688.00 | (2,133,523.78) | 64.29 % | 276,557.33 | 0.00 | 0.00 % |
| 40120 | Trustee's Collections - Prior Year | 60,000.00 | 6,430.89 | -10.72 % | 5,000.00 | 36,930.81 | -738.62 % |
| 40125 | Bankruptcy | 3,000.00 | (131.25) | 4.38 % | 250.00 | 0.00 | 0.00 % |
| 40130 | Cir Clk/Clk & Master Collections-Pr Yr | 46,000.00 | (45,644.28) | 99.23 % | 3,833.33 | (2,943.84) | 76.80 % |
| 40140 | Interest And Penalty | 18,000.00 | (4,309.96) | 23.94 % | 1,500.00 | 0.00 | 0.00 % |
| 40163 | Payments In Lieu Of Taxes - Other | 162,060.00 | (162,059.59) | 100.00 % | 13,505.00 | (162,059.59) | 1,200.00 % |
| 40285 | Adequate Facilities/Development Tax | 600,000.00 | (456,375.47) | 76.06 % | 50,000.00 | 0.00 | 0.00 % |
| 40320 | Bank Excise Tax | 5,170.00 | (30,186.69) | 583.88 % | 430.83 | (30,186.69) | 7,006.58 % |
| 44110 | Investment Income | 60,000.00 | (130,863.87) | 218.11 % | 5,000.00 | 0.00 | 0.00 % |
| | Total Revenues | 4,272,918.00 | (2,956,664.00) | 69.20 % | 356,076.50 | (158,259.31) | 44.45 % |
| Expenditures | | | | | | | |
| 82130 | Education | (3,615,000.00) | 208,055.39 | 5.76 % | (301,250.00) | 0.00 | 0.00 % |
| 82230 | Education | (1,478,975.00) | 770,107.37 | 52.07 % | (123,247.92) | 0.00 | 0.00 % |
| 82330 | Education | (130,000.00) | 46,366.61 | 35.67 % | (10,833.33) | 652.50 | 6.02 % |
| | Total Expenditures | (5,223,975.00) | 1,024,529.37 | 19.61 % | (435,331.25) | 652.50 | 0.15 % |
| Total | 156 Education Debt Service | (951,057.00) | (1,932,134.63) | -203.16 % | (79,254.75) | (157,606.81) | -198.86 |

Loudon County Finance
Summary Financial Statement
March 2020

| 171 General Capital Projects | | Year-To-Date | | | Month-To-Date | | |
|------------------------------|--|-----------------------|-----------------------|------------------|---------------------|-----------------------|------------------|
| Account | Description | Budget Estimate | Actual | % of Budget | Estimate Avg/Mth | Actual | % of Avg |
| Revenues | | | | | | | |
| 40110 | Current Property Tax | 164,141.00 | (103,212.51) | 62.88 % | 13,678.42 | 0.00 | 0.00 % |
| 40120 | Trustee's Collections - Prior Year | 2,200.00 | (184.79) | 8.40 % | 183.33 | 1,197.28 | -653.06 % |
| 40125 | Bankruptcy | 100.00 | (13.15) | 13.15 % | 8.33 | 0.00 | 0.00 % |
| 40130 | Cir Clk/Clk & Master Collections-Pr Yr | 4,600.00 | (1,566.70) | 34.06 % | 383.33 | (124.45) | 32.47 % |
| 40140 | Interest And Penalty | 500.00 | (186.77) | 37.35 % | 41.67 | 0.00 | 0.00 % |
| 40163 | Payments In Lieu Of Taxes - Other | 9,641.00 | (9,653.20) | 100.13 % | 803.42 | (5,476.14) | 681.61 % |
| 40210 | Local Option Sales Tax | 178,640.00 | (164,315.58) | 91.98 % | 14,886.67 | (17,590.30) | 118.16 % |
| 40320 | Bank Excise Tax | 221.00 | (1,276.07) | 577.41 % | 18.42 | (1,276.07) | 6,928.89 % |
| 44110 | Investment Income | 100,000.00 | (88,635.18) | 88.64 % | 8,333.33 | 0.00 | 0.00 % |
| 44570 | Contributions & Gifts | 2,500.00 | (1,465.50) | 58.62 % | 208.33 | 0.00 | 0.00 % |
| 47590 | Other Federal Through State | 93,480.00 | (4,855.49) | 5.19 % | 7,790.00 | 0.00 | 0.00 % |
| 49600 | Proceeds From Sale Of Capital Assets | 222,300.00 | 0.00 | 0.00 % | 18,525.00 | 0.00 | 0.00 % |
| 49700 | Insurance Recovery | 0.00 | (3,393,954.10) | 0.00 % | 0.00 | (3,393,954.10) | 0.00 % |
| 49800 | Transfers In | 51,481.00 | 0.00 | 0.00 % | 4,290.08 | 0.00 | 0.00 % |
| Total Revenues | | 829,804.00 | (3,769,319.04) | 454.24 % | 69,150.33 | (3,417,223.78) | 4,941.73 |
| Expenditures | | | | | | | |
| 58900 | Miscellaneous | (4,000.00) | 2,112.32 | 52.81 % | (333.33) | 0.00 | 0.00 % |
| 91110 | General Administration Projects | (307,300.00) | 280,556.32 | 91.30 % | (25,608.33) | 8,202.32 | 32.03 % |
| 91120 | Administration Of Justice Projects | (427,710.00) | 1,663,828.87 | 389.01 % | (35,642.50) | 19,516.26 | 54.76 % |
| 91130 | Public Safety Projects | (637,000.00) | 645,694.22 | 101.36 % | (53,083.33) | 16,195.50 | 30.51 % |
| 91140 | Public Health And Welfare Projects | (6,000.00) | 5,951.60 | 99.19 % | (500.00) | 0.00 | 0.00 % |
| 91190 | Other General Government Projects | (4,178.00) | 4,177.06 | 99.98 % | (348.17) | 0.00 | 0.00 % |
| 91200 | Highway & Street Capital Projects | (90,820.00) | 52.38 | 0.06 % | (7,568.33) | 0.00 | 0.00 % |
| 99100 | Transfers Out | (55,546.00) | 0.00 | 0.00 % | (4,628.83) | 0.00 | 0.00 % |
| Total Expenditures | | (1,532,554.00) | 2,602,372.77 | 169.81 % | (127,712.83) | 43,914.08 | 34.39 % |
| Total | 171 General Capital Projects | (702,750.00) | (1,166,946.27) | -166.05 % | (58,562.50) | (3,373,309.70) | -5,760.19 |

Template Name: LGC Defined
Created by: LGC

Loudon County Finance
Summary Financial Statement
March 2020

User:
Date/Time:

Tracy Blair
4/1/2020 12:16 PM
Page 21 of 27

| 176 Highway Capital Projects | | Year-To-Date | | | Month-To-Date | | |
|------------------------------|--|---------------------|---------------------|-----------------|--------------------|-------------------|----------------|
| Account | Description | Budget Estimate | Actual | % of Budget | Estimate Avg/Mth | Actual | % of Avg |
| Revenues | | | | | | | |
| 40110 | Current Property Tax | 282,394.00 | (177,572.14) | 62.88 % | 23,532.83 | 0.00 | 0.00 % |
| 40120 | Trustee's Collections - Prior Year | 7,500.00 | (380.16) | 5.07 % | 625.00 | 2,058.95 | -329.43 % |
| 40125 | Trustee's Collections - Bankruptcy | 300.00 | (22.59) | 7.53 % | 25.00 | 0.00 | 0.00 % |
| 40130 | Cir Clk/Clk & Master Collections-Pr Yr | 3,500.00 | (2,688.79) | 76.82 % | 291.67 | (214.09) | 73.40 % |
| 40140 | Interest And Penalty | 1,000.00 | (320.21) | 32.02 % | 83.33 | 0.00 | 0.00 % |
| 40163 | Payments In Lieu Of Taxes - Other | 9,390.00 | (9,412.12) | 100.24 % | 782.50 | (9,412.12) | 1,202.83 % |
| 40320 | Bank Excise Tax | 88.00 | (2,195.40) | 2,494.77 % | 7.33 | (2,195.40) | 19,937.27 % |
| | Total Revenues | 304,172.00 | (192,591.41) | 63.32 % | 25,347.67 | (9,762.66) | 38.52 % |
| Expenditures | | | | | | | |
| 91200 | Highway & Street Capital Projects | (361,000.00) | 252,666.74 | 69.99 % | (30,083.33) | 0.00 | 0.00 % |
| | Total Expenditures | (361,000.00) | 252,666.74 | 69.99 % | (30,083.33) | 0.00 | 0.00 % |
| Total | 176 Highway Capital Projects | (56,828.00) | 60,075.33 | 105.71 % | (4,735.67) | (9,762.66) | -206.15 |

Template Name: LGC Defined
Created by: LGC

Loudon County Finance
Summary Financial Statement
March 2020

User:
Date/Time:

Tracy Blair
4/1/2020 12:16 PM
Page 22 of 27

| 177 Education Capital Projects | | Year-To-Date | | | Month-To-Date | | |
|--------------------------------|-------------------------------------|-----------------|---------------|-----------------|------------------|-------------|---------------|
| Account | Description | Budget Estimate | Actual | % of Budget | Estimate Avg/Mth | Actual | % of Avg |
| Revenues | | | | | | | |
| 40285 | Adequate Facilities/Development Tax | 0.00 | 0.00 | 0.00 % | 0.00 | 0.00 | 0.00 % |
| | Total Revenues | 0.00 | 0.00 | 100.00 % | 0.00 | 0.00 | 0.00 % |
| Expenditures | | | | | | | |
| 91300 | Education Capital Projects | 0.00 | 434.25 | 0.00 % | 0.00 | 0.00 | 0.00 % |
| | Total Expenditures | 0.00 | 434.25 | 100.00 % | 0.00 | 0.00 | 0.00 % |
| Total 177 | Education Capital Projects | 0.00 | 434.25 | 100.00 % | 0.00 | 0.00 | 0.00 % |

Loudon County Commission

Exhibit 040620-K

Monthly Reports-

Budget Committee Minutes

February 18, 2020

***Loudon County Budget Committee
Meeting Minutes
February 18, 2020***

COMMITTEE MEMBERS:

Mayor Roilen "Buddy" Bradshaw, Chair
Commissioner Henry Cullen, Vice Chair
Commissioner Bill Satterfield
Commissioner David Meers
Commissioner Van Shaver
Tracy Blair, Budget Director

All members of the Budget Committee were present for the February 18, 2020 regular monthly.

The following items were considered:

Approval of January 21, 2020 meeting minutes

Commissioner Shaver made the motion to approve as presented; seconded by Commissioner Meers. The motion **PASSED** unanimously upon the vote.

Consideration of recommendation to approve A Resolution to Establish a Local Commitment of \$100,000 "Premium Holiday" Offered by CIGNA

Copies of the proposed Resolution were distributed and discussed. Commissioner Meers made the motion to recommend approval; seconded by Commissioner Satterfield; **PASSING** unanimously upon the vote.

Consideration of recommendation to approve A Resolution Authorizing Refunding bonds Series 2011 and 2012

Copies of the Preliminary Funding Analysis were distributed and the estimated \$2,000,000 savings were discussed. Commissioner Meers made the motion to recommend approval; seconded by Commissioner Satterfield; **PASSING** unanimously upon the vote.

Consideration of request for additional funding for property audits – Assessor of Property Mike Campbell

Mr. Campbell briefly discussed property audits required for the tax year, and requested an increase of \$7,500 in the budget for the remainder of this fiscal year. Commissioner Shaver made the motion to recommend approval; seconded by Commissioner Meers; **PASSING** unanimously upon the vote.



Consideration of recommendation to approve line adjustments/amendments in the following funds:

The Committee received copies of spreadsheet with amendments.

A. County General Fund 101

Commissioner Shaver made the motion to recommend approval; seconded by Commissioner Meers; *PASSING UNANIMOUSLY* upon the vote.

B. Public Libraries Fund 115

Commissioner Shaver made the motion to recommend approval; seconded by Commissioner Satterfield; *PASSING UNANIMOUSLY* upon the vote.

C. County Drug Fund 122

Ms. Blair explained a revision in requirements that has caused a significant decrease in Drug Fund revenue. The proposed amendment includes reductions in revenue budgets, as well as a reduction in the expense line for Garcia Pay, which the Sheriff's Department intends to pay from the Sheriff's budget this year instead of from the Drug Fund. Members of the Budget Committee expressed concern with additional expenses in the Sheriff's budget. Therefore, Commissioner Shaver made the motion to recommend approval of the expense adjustments only, with the exception of the reduction in 140 Salary Supplement, which is utilized for Garcia Pay. This motion *PASSED UNANIMOUSLY* after Commissioner Satterfield seconded the motion.

D. General Purpose School Fund 141

Commissioner Shaver made the motion to recommend approval; seconded by Commissioner Meers; *PASSING UNANIMOUSLY* upon the vote.

E. Highway Capital Projects Fund 176

Commissioner Shaver made the motion to recommend approval; seconded by Commissioner Satterfield; *PASSING UNANIMOUSLY* upon the vote.

F. Career Center Fund 357

Ms. Blair informed the Committee of attempts to communicate the need for amendments to the Career Center Board. The proposed line adjustments have not been approved by the Committee; however the overall appropriation remains constant. Additionally, since the June 30th cash balance is shared between the City of Lenoir City and the County, higher expenditures during the year result in a lesser amount to share at June 30th. The line adjustments are reflective of this fact. Commissioner Shaver made the motion to recommend approval; seconded by Commissioner Meers; *PASSING* unanimously upon the vote.

Mayor Bradshaw introduced Jay Alwadie, owner of property that is on the market and adjacent to the Old Courthouse (Bill's Courtyard). The possibility of the county obtaining this property to utilize in conjunction with the offices displaced because of the Old Courthouse fire was discussed. The following information was revealed: The building is 3,400 square feet, includes two offices upstairs, was bought for \$650,000, appraised for \$750,000, and \$250,000 outstanding. The general consensus of the Budget Committee was to wait until MBI completes the conceptual drawings for a possible expansion of the Old Courthouse.

All business concluded, Commissioner Shaver made the motion to adjourn; seconded by Commissioner Cullen. The motion *PASSED* unanimously.

Mayor Bradshaw declared the meeting adjourned.



Mayor Rollen "Buddy" Bradshaw
Budget Committee Chair

Loudon County Commission

Exhibit 040620-L

Notaries & Bonds

LOUDON COUNTY CLERK
CARRIE MCKELVEY COUNTY CLERK
101 MULBERRY ST STE 200
LOUDON TN 37774
Telephone 865-458-3314
Fax 865-458-9891

Notaries to be elected April 06,2020

DEBORAH R BAKER
YURISAN CORNEJO
CALLIE DAVIS
SHARON A DUSTIN
ROMANIA HENSLEY
JACKIE SUE MACDONALD

HEATHER MANNING
DANYELLE L MCLAIN
M'RECIA OODY
HARVEY L SPROUL
NANCY CAROL WILLETT
MARK W WILLIAMS

Loudon County Commission
EXHIBIT 040620-L