

# **LOUDON COUNTY COMMISSION**

**Loudon County, Tennessee**

**October 02, 2017**

**6:00 PM**

**Courthouse Annex**

## **AGENDA**

### **Regular Meeting**

#### **PUBLIC HEARING:**

- 1. A Resolution amending the Zoning Map of Loudon County, Tennessee, pursuant to Chapter Seven, §13-7-105 of the Tennessee Code Annotated, to rezone approximately 7.65 acres, 16746 Hwy 11 E., Lenoir City, TN, Loudon County Tax Map 011, Parcel 037.00 in the 5<sup>th</sup> Legislative District from R-1 (Suburban Residential District) to R-1 (Suburban Residential District) with PUD (Planned Unit Development Overlay) 2.5 units per acre**

1. Opening of Meeting, Pledge of Allegiance, Invocation
2. Roll Call
3. Adoption of the Agenda – October 02, 2017
4. Reading and Acceptance of the September 05, 2017 Commission Meeting Minutes
5. General Public Comments
6. Reports of County Officials, Departments, and Committees:
  - A. Loudon County Mayor – Buddy Bradshaw**
    1. Consideration of Recommendation to Make a Contribution to Fishing Tournament
    2. Approval of Board & Committee Terms
      - a. Agriculture Extension Committee
      - b. Airport Authority
      - c. Animal Control Authority Advisory Board

- d. Beer Board
- e. Blair Bend Industrial Committee
- f. Economic Development Agency Board of Directors
- g. Ethics Committee
- h. Financial Advisory Committee
- i. Governmental Affairs Committee
- j. Litter Control Committee
- k. Maintenance Committee
- l. Roane State Maintenance & Operations Advisory Committee
- m. Safety Committee
- n. Salary Benefit AD-HOC Committee
- o. Senior Citizens Executive Committee
- p. Sheriff's Merit Services Board
- q. TCCA Legislative Committee
- r. TASS Board of Directors
- s. Budget Committee
- t. Capital Projects Committee
- u. Purchasing Committee

- 3. Charitable Contribution to Hensley Chapel Baptist Church

**B. Planning Director – Laura Smith**

- 1. A Resolution amending the Zoning Map of Loudon County, Tennessee, pursuant to Chapter Seven, §13-7-105 of the Tennessee Code Annotated, to rezone approximately 7.65 acres, 16746 Hwy 11 E., Lenoir City, TN, Loudon County Tax Map 011, Parcel 037.00 in the 5<sup>th</sup> Legislative District from R-1 (Suburban Residential District) to R-1 (Suburban Residential District) with PUD (Planned Unit Development Overlay) 2.5 units per acre

**C. Highway Superintendant – Eddie Simpson**

- 1. Steekee School Road – TVA Right of Way

**D. County Commission Chairman – Steve Harrelson**

- 1. Poplar Springs Landfill

**E. Budget Director – Tracy Blair**

- 1. Consideration of a Recommendation to Approve Application / Acceptance of \$1,271.00 Technology Grant, Dollar-For-Dollar Match from Loudon Library Subfund

2. Consideration of a Recommendation to Approve Amendments in the Following Funds:
  - a. General Purpose School Fund 141
  - b. School Federal Projects Fund 142
  
3. Distribution of Monthly Reports

**F. County Commissioner – David Meers**

1. Notaries & Bonds

7. Adjournment

# LOUDON COUNTY COMMISSION

LOUDON COUNTY, TENNESSEE

Tuesday September 5, 2017

Courthouse Annex Building

6 P.M.

## REGULAR COMMISSION MEETING

(1)  
Public Hearing  
Rezoning

1. Request approval of a Resolution amending the zoning map of Loudon County, Tennessee, pursuant to Chapter 7, §13-7-105 of the Tennessee Code Annotated. To Rezone Approximately 5.5 Acres from O-1 (Office Professional District) to A-2 (Rural Residential District), Loudon County Tax Map 058, Parcel 094.00, Located at 15140 Watt Cemetery Road, Loudon, TN.  
Situating in the 1<sup>st</sup> Legislative District

**No one from the public came forward to speak.**

(2)  
Opening  
Of Meeting

**BE IT REMEMBERED** that the Board of Commissioners of Loudon County convened in regular session in Loudon, Tennessee on the 5<sup>th</sup> day of September 2017.

**The Honorable Mayor Buddy Bradshaw** called the meeting to order.

**Commissioner Kelly Brewster** opened the County Commission Meeting, led the Pledge of Allegiance to the Flag of the United States of America, and gave the Invocation.

(3)  
Roll Call

Present were the following Commissioners: **Kelly Brewster, David Meers, Earlena Maples, Matthew Tinker, Bill Satterfield, Steve Harrelson, Harold Duff, Van Shaver, and Henry Cullen. (9)**

Absent were the following Commissioners: **Leo Bradshaw. (1)**  
Thereupon Mayor Bradshaw announced the presence of a quorum.

**Present was Financial Director Tracy Blair and the Honorable Mayor Buddy Bradshaw.**

(4)  
Election of  
Chairman

**Mayor Buddy Bradshaw** requested nominations for **Chairman of the Board of Commissioners** for the next term. **Commissioner Meers** nominated **Commissioner Steve Harrelson**. A Second was made by **Commissioner Cullen**. A motion and second was made to cease nominations. Upon voice vote, the motion to cease was passed **unanimously**.

**Mayor Bradshaw** called for a roll call vote.

Upon the roll call vote the following Commissioners voted **Aye: Meers, Maples, Tinker, Satterfield, Duff, Shaver, Cullen and Brewster. (8)**

The following Commissioners voted **Nay: (0)**.

The following Commissioner **passed on the vote: Harrelson (1)**.

The following Commissioner was **Absent: Bradshaw (1)**.

Thereupon **the Mayor** announced the motion **passed (8,0,1,1)**.

**The Mayor** then turned the meeting over to **Commission Chair Steve Harrelson**.

(5)  
Election of  
Commission  
Chair  
Pro Tem

**The Chairman** opened the floor for nominations for **Commission Chair Pro Tem. Commissioner Shaver** made a motion to nominate **Commissioner Earlena Maples**. A second was made by **Commissioner Tinker**. A motion and second was made for nominations to cease. Upon voice vote the motion passed **unanimously**.

**The Chairman** called for a roll call vote.

Upon the roll call vote the following Commissioners voted **Aye: Tinker, Satterfield, Duff, Shaver, Cullen, Brewster and Meers. (8)**

The following Commissioners voted **Nay: (0)**.

The following Commissioner **passed on the vote: Maples (1)**.

The following Commissioner was **Absent: Bradshaw (1)**.

Thereupon **the Chairman** announced the motion **passed (8,0,1,1)**.

(6)  
Agenda  
Adopted

**Chairman Harrelson** requested that the September 5, 2017 Agenda be adopted.

**The Mayor** requested that the recommendation made by **Commissioner Tinker** to appoint **Andy Hamilton** as the 2<sup>nd</sup> District Representative on the Planning Commission be added to the Agenda as item #3 under his name.

**Commissioner Shaver** made a motion to adopt the September 5, 2017 agenda with changes made and a second was made **Commissioner Tinker**.

Upon voice vote the motion **Passed** unanimously.

(7)  
Comm. Mtg.  
Minutes  
Approved  
8-7-17  
8-21-17  
8-24-17  
Approved

**Chairman Harrelson** requested that the August 7, 2017 Commission Meeting minutes, the August 21, 2017 Special Called Meeting minutes, and the August 24, 2017 Special Called Meeting minutes be approved and accepted. **Commission Satterfield** made a motion to approve and accept all three sets of minutes. A second was made by **Commissioner Shaver**.

Upon voice vote the motion **Passed** unanimously.

(8)  
General  
Public  
Comments

Before **Chairman Steve Harrelson** opened the floor for comments from the General Public, **the Chairman** recognized the **2017 Leadership Class of Loudon County** and all those present.

**Chairman Harrelson** opened the floor for General Public Comments. **Pat Hunter** spoke.

(9)  
\$3,000  
Contribution  
Riverside  
Cemetery  
Approved

Mayor Bradshaw made a request for a \$3,000 contribution from the County Commission for the mowing of the Riverside Cemetery.

The Mayor added that he was going to request, in writing, that the **City of Loudon** match this contribution.

It was also noted that this would be a one-time contribution.

The Commissioners commenced in discussion.

A motion was made by **Commissioner Brewster** for a one-time \$3000 contribution to **Riverside Cemetery** for mowing and maintenance. **Commissioner Meers** seconded the motion.

**Chairman Harrelson** called for a roll call vote.

Upon the roll call vote the following Commissioners voted **Aye: Tinker, Harrelson, Duff, Cullen, Brewster and Meers. (6)**

The following Commissioners voted **Nay: Satterfield, Shaver, and Maples. (3)**

The following Commissioner was **Absent: Bradshaw (1)**

Thereupon **the Chairman** announced the motion **passed (6,3,1)**

(10)  
"No Jake  
Brake" Sign  
Vonore Rd.  
Approved

**The Mayor** said that the TDOT requested that there be a "No Jake Brake" sign posted at **Vonore Road**.

**Commissioner Brewster** made a motion to post a "No Jake Brake" sign at Vonore Road. **Commissioner Meers** seconded the motion.

Upon voice vote the motion **Passed** unanimously.

(11)  
Appt.  
Planning  
Commission  
Approved

**Commissioner Tinker** made a recommendation for **Andy Hamilton** to be appointed as the **2<sup>nd</sup> District Representative** on the **Planning Commission**.

A motion was made by **Commissioner Maples** and a second was made by **Commissioner Tinker**.

Upon voice vote the motion **Passed** unanimously.

(12)  
Resolution  
Rezoning on  
Watt Cemetery  
Rd.  
Approved

**Planning Director Laura Smith** presented a Resolution amending the zoning map of Loudon County, Tennessee, pursuant to Chapter 7, §13-7-105 of the Tennessee Code Annotated. To Rezone Approximately 5.5 Acres from O-1 (Office Professional District) to A-2 (Rural Residential District), Loudon County Tax Map 058, Parcel 094.00, Located at 15140 Watt Cemetery Road, Loudon, TN. Situated in the 1<sup>st</sup> Legislative District.

A motion was made by **Commissioner Meers** with a second by **Commissioner Brewster**.

Upon voice vote the motion **Passed** unanimously.

**Resolution 090517-A**

(13)  
License  
Agreement  
For "Shared  
Path"

Chairman Harrelson presented the License Agreement with the Tennessee Department of Transportation regarding maintenance for "Shared Path".

The Commissioners commenced in discussion.

A motion was made to approve the resolution but not sign the Resolution until it was updated and the project was completed by Commissioner Tinker. A second was made by Commissioner Maples.

Upon the roll call vote the following Commissioners voted **Aye: Duff, Cullen, Brewster, Meers, Maples, Tinker, Satterfield, and Harrelson. (8)**

The following Commissioners voted **Nay: Shaver. (1)**

The following Commissioner was **Absent: Bradshaw (1)**

Thereupon **the Chairman** announced the motion **passed. (8,1,1)**

(14)  
Distribution  
of Monthly  
Reports

**Budget Director, Tracy Blair** distributed the Monthly Budget Reports for August 2017.

**Exhibit 090517-B**

(15)  
Notaries  
Approved

**Commissioner Meers** made a motion that was seconded by **Commissioner Shaver** to approve the following notaries: Christy Batson, M. Hope Brown, Lisa Davis, Vickie Lynn Goad, Jennifer Micelle Griffis, Daveau Meek Haugen, Debra H. Hines, M.A. Nassar, Wilma Raby, Jinni B. Redmond, Lisa G. Reves, and Kelley Elise Thomas.

Upon voice vote the motion **Passed** unanimously.

(16)  
Adjournment

There being no further business, a motion being duly made by **Commissioner Shaver** and seconded by **Commissioner Satterfield**, the September 05, 2017 Commission Meeting stood adjourned at 6:35 P.M.

---

CHAIRMAN

ATTEST:

---

COUNTY CLERK

---

COUNTY MAYOR

**LOUDON COUNTY COMMISSION**

**RESOLUTION 100217-**

**RESOLUTION APPROVING OR ACKNOWLEDGING BOARD OR  
COMMITTEE APPOINTMENT BY COUNTY MAYOR**

*WHEREAS*, by statute, and/or intergovernmental agreement and/or County Procedural Regulations, the County Mayor has the authority to make certain committee and board appointments; and

*WHEREAS*, appointments are necessary and/or desirable at this time with a 2 year rotation term; and

*WHEREAS*, the County Mayor appoints the following members of the

**AGRICULTURE EXTENSION COMMITTEE**

<u>Appointee</u>	<u>Term Expiration</u>
Commissioner Van Shaver	September 2019
Jack Bowden	September 2019
Ruth Henderson McQueen	September 2019

*NOW, THEREFORE, BE IT RESOLVED* that the Loudon County Commission, meeting in regular session assembled this 2nd day of October 2017 hereby approves or acknowledges (as appropriate) the said appointments.

\_\_\_\_\_  
COUNTY CHAIRMAN

**ATTEST:**

\_\_\_\_\_  
COUNTY CLERK

\_\_\_\_\_  
COUNTY MAYOR

The remaining members and their continuing expiration terms for said board or committee are as follows:

<u>Appointee</u>	<u>Term Expiration</u>
Commissioner Leo Bradshaw	September 2018
Commissioner David Meers	September 2018
Robert Anderson	September 2018
Sue Bright	September 2018



# LOUDON COUNTY COMMISSION

## RESOLUTION 100217-

### RESOLUTION APPROVING OR ACKNOWLEDGING BOARD OR COMMITTEE APPOINTMENT BY COUNTY MAYOR

*WHEREAS*, by statute, and/or intergovernmental agreement and/or County Procedural Regulations, the County Mayor has authority to make certain committee and board appointments, and

*WHEREAS*, appointments are necessary and/or desirable at this time with a 1 year rotation term, and

*WHEREAS*, the County Mayor appoints the following as members of the

#### **ANIMAL CONTROL AUTHORITY ADVISORY BOARD**

<u>Appointee</u>		<u>Term Expiration</u>
Betty Brown	At-Large	September 2018
Henry Cullen	County Commissioner	September 2018
Dot Boruff	At-Large	September 2018
Dr. Barry Gordon	Veterinarian Association	September 2018
Ed Loy	Humane Society	September 2018
James Web	At-Large	September 2018

*NOW, THEREFORE, BE IT RESOLVED* that the Loudon County Commission, meeting in regular session, assembled this 2nd day of October 2017 hereby approves or acknowledges (as appropriate) the said appointments.

\_\_\_\_\_  
COUNTY CHAIRMAN

ATTEST:

\_\_\_\_\_  
COUNTY CLERK

\_\_\_\_\_  
COUNTY MAYOR

# LOUDON COUNTY COMMISSION

## RESOLUTION 100217-

### RESOLUTION APPROVING OR ACKNOWLEDGING BOARD OR COMMITTEE APPOINTMENT BY COUNTY MAYOR

*WHEREAS*, by statute, and/or intergovernmental agreement and/or County Procedural Regulations, the County Mayor has authority to make certain committee and board appointments, and

*WHEREAS*, appointments are necessary and/or desirable at this time with a 1 year rotation term, and

*WHEREAS*, the County Mayor appoints the following as members of the

### ETHICS COMMITTEE

<u>Appointee</u>		<u>Term Expiration</u>
Eddie Simpson	Constitutional Officer	September 2018
Betty Brown	At-Large	September 2018
Matthew Tinker	County Commissioner	September 2018
Bill Satterfield	County Commissioner	September 2018
Kelly Brewster	County Commissioner	September 2018

*NOW, THEREFORE, BE IT RESOLVED* that the Loudon County Commission, meeting in regular session, assembled this 2nd day of October 2017 hereby approves or acknowledges (as appropriate) the said appointments.

\_\_\_\_\_  
COUNTY CHAIRMAN

ATTEST:

\_\_\_\_\_  
COUNTY CLERK

\_\_\_\_\_  
COUNTY MAYOR

**LOUDON COUNTY COMMISSION**  
**RESOLUTION 100217-**

**RESOLUTION APPROVING OR ACKNOWLEDGING BOARD OR**  
**COMMITTEE APPOINTMENT BY COUNTY MAYOR**

*WHEREAS*, by statute, and/or intergovernmental agreement and/or County Procedural Regulations, the County Mayor has the authority to make certain committee and board appointments; and

*WHEREAS*, appointments are necessary and/or desirable at this time with a 5 year rotation term; and

*WHEREAS*, the County Mayor appoints the following members of the

**AIRPORT AUTHORITY**

<u>Appointee</u>	<u>Term Expiration</u>
Charles Wells	August 2022

*NOW, THEREFORE, BE IT RESOLVED* that the Loudon County Commission, meeting in regular session assembled this 2nd day of October 2017 hereby approves or acknowledges (as appropriate) the said appointments.

\_\_\_\_\_  
COUNTY CHAIRMAN

ATTEST:

\_\_\_\_\_  
COUNTY CLERK

\_\_\_\_\_  
COUNTY MAYOR

The remaining members and their continuing expiration terms for said board or committee are as follows:

<u>Appointee</u>	<u>Term Expiration</u>
Bart Iddins	August 2020
David Ferguson	August 2021
John Manikas	August 2018
Clayton Pangle	August 2019

**LOUDON COUNTY COMMISSION**  
**RESOLUTION 100217-**

**RESOLUTION APPROVING OR ACKNOWLEDGING BOARD OR**  
**COMMITTEE APPOINTMENT BY COUNTY MAYOR**

*WHEREAS*, by statute, and/or intergovernmental agreement and/or County Procedural Regulations, the County Mayor has the authority to make certain committee and board appointments; and

*WHEREAS*, appointments are necessary and/or desirable at this time with a 3 year rotation term; and

*WHEREAS*, the County Mayor appoints the following members of the

**BEER BOARD**

<u>Appointee</u>		<u>Term Expiration</u>
Jim Brooks	Panel B/3 <sup>rd</sup> District	August 2020
David Gray	Panel B/4 <sup>th</sup> District	August 2020

*NOW, THEREFORE, BE IT RESOLVED* that the Loudon County Commission, meeting in regular session assembled this 2nd day of October 2017 hereby approves or acknowledges (as appropriate) the said appointments.

\_\_\_\_\_  
COUNTY CHAIRMAN

ATTEST:

\_\_\_\_\_  
COUNTY CLERK

\_\_\_\_\_  
COUNTY MAYOR

The remaining members and their continuing expiration terms for said board or committee are as follows:

<u>Appointee</u>		<u>Term Expiration</u>
Bob Snodgrass	Panel C/7 <sup>th</sup> District	August 2018
Mary Ann Cook	Panel C/5 <sup>th</sup> District	August 2018
Krystee Ervin Conaway	Panel C/6 <sup>th</sup> District	August 2018
John Lovelace	Panel A/1 <sup>st</sup> District	August 2019
Connie Sledzinski	Panel A/2 <sup>nd</sup> District	August 2019

**LOUDON COUNTY COMMISSION**  
**RESOLUTION 100217-**

**RESOLUTION APPROVING OR ACKNOWLEDGING BOARD OR**  
**COMMITTEE APPOINTMENT BY COUNTY MAYOR**

**WHEREAS**, by statute, and/or intergovernmental agreement and/or County Procedural Regulations, the County Mayor has the authority to make certain committee and board appointments; and

**WHEREAS**, appointments are necessary and/or desirable at this time with a 1 year rotation term; and

**WHEREAS**, the County Mayor appoints the following members of the

**BLAIR BEND INDUSTRIAL COMMITTEE**

<u>Appointee</u>		<u>Term Expiration</u>
David Meers	Commissioner	August 2018
Henry Cullen	Commissioner	August 2018
Leo Bradshaw	Commissioner	August 2018

**NOW, THEREFORE, BE IT RESOLVED** that the Loudon County Commission, meeting in regular session assembled this 2nd day of October 2017 hereby approves or acknowledges (as appropriate) the said appointments.

\_\_\_\_\_  
COUNTY CHAIRMAN

**ATTEST:**

\_\_\_\_\_  
COUNTY CLERK

\_\_\_\_\_  
COUNTY MAYOR

**LOUDON COUNTY COMMISSION  
RESOLUTION 100217-**

**RESOLUTION APPROVING OR ACKNOWLEDGING BOARD OR  
COMMITTEE APPOINTMENT BY COUNTY MAYOR**

*WHEREAS*, by statute, and/or intergovernmental agreement and/or County Procedural Regulations, the County Mayor has the authority to make certain committee and board appointments; and

*WHEREAS*, appointments are necessary and/or desirable at this time with a 1 year rotation term; and

*WHEREAS*, the County Mayor appoints the following members of the

**ECONOMIC DEVELOPMENT AGENCY  
BOARD OF DIRECTORS**

<u>Appointee</u>		<u>Term Expiration</u>
Harold Duff	Commissioner	August 2018

*NOW, THEREFORE, BE IT RESOLVED* that the Loudon County Commission, meeting in regular session assembled this 2nd day of October 2017 hereby approves or acknowledges (as appropriate) the said appointments.

\_\_\_\_\_  
COUNTY CHAIRMAN

ATTEST:

\_\_\_\_\_  
COUNTY CLERK

\_\_\_\_\_  
COUNTY MAYOR

**LOUDON COUNTY COMMISSION  
RESOLUTION 100217-**

**RESOLUTION APPROVING OR ACKNOWLEDGING BOARD OR  
COMMITTEE APPOINTMENT BY COUNTY MAYOR**

*WHEREAS*, by statute, and/or intergovernmental agreement and/or County Procedural Regulations, the County Mayor has the authority to make certain committee and board appointments; and

*WHEREAS*, appointments are necessary and/or desirable at this time with a 1 year rotation term; and

*WHEREAS*, the County Mayor appoints the following members of the

**FINANCIAL ADVISORY COMMITTEE**

<u>Appointee</u>		<u>Term Expiration</u>
Earlena Maples	Commissioner	August 2018
Van Shaver	Commissioner	August 2018
Harold Duff	Commissioner	August 2018
Buddy Bradshaw	County Mayor, Chair	August 2018
Tracy Blair	Director of Budgets	August 2018
Chip Miller	Trustee	August 2018

*NOW, THEREFORE, BE IT RESOLVED* that the Loudon County Commission, meeting in regular session assembled this 2nd day of October 2017 hereby approves or acknowledges (as appropriate) the said appointments.

\_\_\_\_\_  
COUNTY CHAIRMAN

**ATTEST:**

\_\_\_\_\_  
COUNTY CLERK

\_\_\_\_\_  
COUNTY MAYOR

**LOUDON COUNTY COMMISSION**  
**RESOLUTION 100217-**

**RESOLUTION APPROVING OR ACKNOWLEDGING BOARD OR**  
**COMMITTEE APPOINTMENT BY COUNTY MAYOR**

**WHEREAS**, by statute, and/or intergovernmental agreement and/or County Procedural Regulations, the County Mayor has the authority to make certain committee and board appointments; and

**WHEREAS**, appointments are necessary and/or desirable at this time with a 1 year rotation term; and

**WHEREAS**, the County Mayor appoints the following members of the

**GOVERNMENTAL AFFAIRS COMMITTEE**

<u>Appointee</u>		<u>Term Expiration</u>
David Meers	Commissioner	August 2018
Earlena Maples	Commissioner	August 2018
Matthew Tinker	Commissioner	August 2018
Leo Bradshaw	Commissioner	August 2018
Harold Duff	Commissioner	August 2018

**NOW, THEREFORE, BE IT RESOLVED** that the Loudon County Commission, meeting in regular session assembled this 2nd day of October 2017 hereby approves or acknowledges (as appropriate) the said appointments.

\_\_\_\_\_  
COUNTY CHAIRMAN

**ATTEST:**

\_\_\_\_\_  
COUNTY CLERK

\_\_\_\_\_  
COUNTY MAYOR



**LOUDON COUNTY COMMISSION**  
**RESOLUTION 100217-**

**RESOLUTION APPROVING OR ACKNOWLEDGING BOARD OR**  
**COMMITTEE APPOINTMENT BY COUNTY MAYOR**

*WHEREAS*, by statute, and/or intergovernmental agreement and/or County Procedural Regulations, the County Mayor has the authority to make certain committee and board appointments; and

*WHEREAS*, appointments are necessary and/or desirable at this time with a 1 year rotation term; and

*WHEREAS*, the County Mayor appoints the following members of the

**LITTER CONTROL COMMITTEE**

<u>Appointee</u>		<u>Term Expiration</u>
Earlena Maples	Commissioner	August 2018
Bill Satterfield	Commissioner	August 2018
David Meers	Commissioner	August 2018
Tim Guider	Sheriff	August 2018
Eddie Simpson	Road Superintendant	August 2018
Chris Parks		August 2018

*NOW, THEREFORE, BE IT RESOLVED* that the Loudon County Commission, meeting in regular session assembled this 2nd day of October 2017 hereby approves or acknowledges (as appropriate) the said appointments.

\_\_\_\_\_  
COUNTY CHAIRMAN

**ATTEST:**

\_\_\_\_\_  
COUNTY CLERK

\_\_\_\_\_  
COUNTY MAYOR

**LOUDON COUNTY COMMISSION**  
**RESOLUTION 100217-**

**RESOLUTION APPROVING OR ACKNOWLEDGING BOARD OR**  
**COMMITTEE APPOINTMENT BY COUNTY MAYOR**

*WHEREAS*, by statute, and/or intergovernmental agreement and/or County Procedural Regulations, the County Mayor has the authority to make certain committee and board appointments; and

*WHEREAS*, appointments are necessary and/or desirable at this time with a 1 year rotation term; and

*WHEREAS*, the County Mayor appoints the following members of the

**MAINTENANCE COMMITTEE**

<u>Appointee</u>		<u>Term Expiration</u>
Brian Brown	Maintenance Supervisor, Chairman	August 2018
Van Shaver	Commissioner	August 2018
Steve Harrelson	Commissioner	August 2018
Leroy Tate	Board of Education	August 2018
Bobby Johnson	Board of Education	August 2018

*NOW, THEREFORE, BE IT RESOLVED* that the Loudon County Commission, meeting in regular session assembled this 2nd day of October 2017 hereby approves or acknowledges (as appropriate) the said appointments.

\_\_\_\_\_  
COUNTY CHAIRMAN

**ATTEST:**

\_\_\_\_\_  
COUNTY CLERK

\_\_\_\_\_  
COUNTY MAYOR

**LOUDON COUNTY COMMISSION**  
**RESOLUTION 100217-**

**RESOLUTION APPROVING OR ACKNOWLEDGING BOARD OR**  
**COMMITTEE APPOINTMENT BY COUNTY MAYOR**

*WHEREAS*, by statute, and/or intergovernmental agreement and/or County Procedural Regulations, the County Mayor has the authority to make certain committee and board appointments; and

*WHEREAS*, appointments are necessary and/or desirable at this time with a 3 year rotation term; and

*WHEREAS*, the County Mayor appoints the following members of the

**ROANE STATE MAINTENANCE &  
OPERATIONS ADVISORY COMMITTEE**

<u>Appointee</u>		<u>Term Expiration</u>
Harold Duff	Commissioner	June 2020
Brian Brown	Maintenance Director	June 2020
Tony Aikens	Lenoir City Mayor	June 2020
Susan Willams	Roane State	June 2020

*NOW, THEREFORE, BE IT RESOLVED* that the Loudon County Commission, meeting in regular session assembled this 2nd day of October 2017 hereby approves or acknowledges (as appropriate) the said appointments.

\_\_\_\_\_  
COUNTY CHAIRMAN

**ATTEST:**

\_\_\_\_\_  
COUNTY CLERK

\_\_\_\_\_  
COUNTY MAYOR

**LOUDON COUNTY COMMISSION**  
**RESOLUTION 100217-**

**RESOLUTION APPROVING OR ACKNOWLEDGING BOARD OR**  
**COMMITTEE APPOINTMENT BY COUNTY MAYOR**

**WHEREAS**, by statute, and/or intergovernmental agreement and/or County Procedural Regulations, the County Mayor has the authority to make certain committee and board appointments; and

**WHEREAS**, appointments are necessary and/or desirable at this time with a 1 year rotation term; and

**WHEREAS**, the County Mayor appoints the following members of the

**SAFETY COMMITTEE**

<u>Appointee</u>		<u>Term Expiration</u>
Darlene Russell	County Court Clerk	August 2018
Buddy Bradshaw	County Mayor	August 2018
Chip Miller	Trustee	August 2018
Tracie Littleton	Register of Deeds	August 2018
Lisa Niles	Circuit Criminal Court Clerk	August 2018
Tim Guider	Sheriff	August 2018
Henry Cullen	Commissioner	August 2018
Toby Brewster		August 2018
Rex Dale	General Sessions Judge	August 2018
Mike Campbell	Property Assessor	August 2018
Brian Brown	Facilities Maintenance Director	August 2018
Tracy Blair	Director of Budgets	August 2018
Hank Sledge	General Sessions Judge (Div 2)	August 2018

**NOW, THEREFORE, BE IT RESOLVED** that the Loudon County Commission, meeting in regular session assembled this 2nd day of October 2017 hereby approves or acknowledges (as appropriate) the said appointments.

\_\_\_\_\_  
COUNTY CHAIRMAN

**ATTEST:**

\_\_\_\_\_  
COUNTY CLERK

\_\_\_\_\_  
COUNTY MAYOR

**LOUDON COUNTY COMMISSION**  
**RESOLUTION 100217-**

**RESOLUTION APPROVING OR ACKNOWLEDGING BOARD OR**  
**COMMITTEE APPOINTMENT BY COUNTY MAYOR**

*WHEREAS*, by statute, and/or intergovernmental agreement and/or County Procedural Regulations, the County Mayor has the authority to make certain committee and board appointments; and

*WHEREAS*, appointments are necessary and/or desirable at this time with a 1 year rotation term; and

*WHEREAS*, the County Mayor appoints the following members of the

**SALARY BENEFIT AD-HOC COMMITTEE**

<u>Appointee</u>	<u>Term Expiration</u>
Tracy Blair	August 2018
Buddy Bradshaw	August 2018
Brian Brown	August 2018
Mike Campbell	August 2018
Henry Cullens	August 2018
Rex Dale	August 2018
Penny Glasglow	August 2018
Tim Guider	August 2018
Susan Huskey	August 2018
Tracie Littleton	August 2018
David Meers	August 2018
Chip Miller	August 2018
Lisa Niles	August 2018
Tammy Reynolds	August 2018
Darlene Russell	August 2018
Eddie Simpson	August 2018
Hank Sledge	August 2018

*NOW, THEREFORE, BE IT RESOLVED* that the Loudon County Commission, meeting in regular session assembled this 2nd day of October 2017 hereby approves or acknowledges (as appropriate) the said appointments.

\_\_\_\_\_  
COUNTY CHAIRMAN

**ATTEST:**

\_\_\_\_\_  
COUNTY CLERK

\_\_\_\_\_  
COUNTY MAYOR

**LOUDON COUNTY COMMISSION**  
**RESOLUTION 100217-**

**RESOLUTION APPROVING OR ACKNOWLEDGING BOARD OR**  
**COMMITTEE APPOINTMENT BY COUNTY MAYOR**

*WHEREAS*, by statute, and/or intergovernmental agreement and/or County Procedural Regulations, the County Mayor has the authority to make certain committee and board appointments; and

*WHEREAS*, appointments are necessary and/or desirable at this time with a 1 year rotation term; and

*WHEREAS*, the County Mayor appoints the following members of the

**SENIOR CITIZENS EXECUTIVE COMMITTEE**

<u>Appointee</u>		<u>Term Expiration</u>
Harold Duff	Commissioner	August 2018
Bill Satterfield	Commissioner	August 2018

*NOW, THEREFORE, BE IT RESOLVED* that the Loudon County Commission, meeting in regular session assembled this 2nd day of October 2017 hereby approves or acknowledges (as appropriate) the said appointments.

\_\_\_\_\_  
COUNTY CHAIRMAN

**ATTEST:**

\_\_\_\_\_  
COUNTY CLERK

\_\_\_\_\_  
COUNTY MAYOR

**LOUDON COUNTY COMMISSION**  
**RESOLUTION 100217-**

**RESOLUTION APPROVING OR ACKNOWLEDGING BOARD OR**  
**COMMITTEE APPOINTMENT BY COUNTY MAYOR**

*WHEREAS*, by statute, and/or intergovernmental agreement and/or County Procedural Regulations, the County Mayor has the authority to make certain committee and board appointments; and

*WHEREAS*, appointments are necessary and/or desirable at this time with a 3 year rotation term; and

*WHEREAS*, the County Mayor appoints the following members of the

**SHERIFF'S MERIT SERVICES BOARD**

<u>Appointee</u>		<u>Term Expiration</u>
Steve Harrelson	Commissioner	August 2020

*NOW, THEREFORE, BE IT RESOLVED* that the Loudon County Commission, meeting in regular session assembled this 2nd day of October 2017 hereby approves or acknowledges (as appropriate) the said appointments.

**ATTEST:**

\_\_\_\_\_  
COUNTY CHAIRMAN

\_\_\_\_\_  
COUNTY CLERK

\_\_\_\_\_  
COUNTY MAYOR

The remaining members and their continuing expiration terms for said board or committee are as follows:

<u>Appointee</u>		<u>Term Expiration</u>
David Meers	Commissioner	August 2019
John R. Johnson		August 2018

**LOUDON COUNTY COMMISSION**  
**RESOLUTION 100217-**

**RESOLUTION APPROVING OR ACKNOWLEDGING BOARD OR**  
**COMMITTEE APPOINTMENT BY COUNTY MAYOR**

*WHEREAS*, by statute, and/or intergovernmental agreement and/or County Procedural Regulations, the County Mayor has the authority to make certain committee and board appointments; and

*WHEREAS*, appointments are necessary and/or desirable at this time with a 1 year rotation term; and

*WHEREAS*, the County Mayor appoints the following members of the

**TCCA LEGISLATIVE COMMITTEE**

<u>Appointee</u>		<u>Term Expiration</u>
Harold Duff	Commissioner	June 2018

*NOW, THEREFORE, BE IT RESOLVED* that the Loudon County Commission, meeting in regular session assembled this 2nd day of October 2017 hereby approves or acknowledges (as appropriate) the said appointments.

**ATTEST:**

\_\_\_\_\_  
COUNTY CHAIRMAN

\_\_\_\_\_  
COUNTY CLERK

\_\_\_\_\_  
COUNTY MAYOR



**LOUDON COUNTY COMMISSION**  
**RESOLUTION 100217-**

**RESOLUTION APPROVING OR ACKNOWLEDGING BOARD OR**  
**COMMITTEE APPOINTMENT BY COUNTY MAYOR**

*WHEREAS*, by statute, and/or intergovernmental agreement and/or County Procedural Regulations, the County Mayor has the authority to make certain committee and board appointments; and

*WHEREAS*, appointments are necessary and/or desirable at this time with a 3 year rotation term; and

*WHEREAS*, the County Mayor appoints the following members of the

**LOUDON COUNTY TELlico AREA SERVICE SYSTEM**  
**BOARD OF DIRECTORS**

<u>Appointee</u>	<u>Term Expiration</u>
Roy Goddard	June 2020

*NOW, THEREFORE, BE IT RESOLVED* that the Loudon County Commission, meeting in regular session assembled this 2nd day of October 2017 hereby approves or acknowledges (as appropriate) the said appointments.

**ATTEST:**

\_\_\_\_\_  
COUNTY CHAIRMAN

\_\_\_\_\_  
COUNTY CLERK

\_\_\_\_\_  
COUNTY MAYOR

The remaining members and their continuing expiration terms for said board or committee are as follows:

<u>Appointee</u>	<u>Term Expiration</u>
Chip Miller	June 2019
James Brooks	June 2018

**LOUDON COUNTY COMMISSION**  
**RESOLUTION 100217-**

**RESOLUTION APPROVING OR ACKNOWLEDGING BOARD OR**  
**COMMITTEE APPOINTMENT BY COUNTY MAYOR**

*WHEREAS*, by statute, and/or intergovernmental agreement and/or County Procedural Regulations, the County Mayor has the authority to make certain committee and board appointments; and

*WHEREAS*, appointments are necessary and/or desirable at this time with a 1 year rotation term; and

*WHEREAS*, the County Mayor appoints the following members of the

**BUDGET COMMITTEE**

<u>Appointee</u>		<u>Term Expiration</u>
Henry Cullen	Commissioner	August 2018
Bill Satterfield	Commissioner	August 2018
David Meers	Commissioner	August 2018
Leo Bradshaw	Commissioner	August 2018

*NOW, THEREFORE, BE IT RESOLVED* that the Loudon County Commission, meeting in regular session assembled this 2nd day of October 2017 hereby approves or acknowledges (as appropriate) the said appointments.

\_\_\_\_\_  
COUNTY CHAIRMAN

**ATTEST:**

\_\_\_\_\_  
COUNTY CLERK

\_\_\_\_\_  
COUNTY MAYOR

The remaining members and their continuing expiration terms for said board or committee are as follows:

<u>Appointee</u>		<u>Term Expiration</u>
Appointee Buddy Bradshaw	County Mayor	N/A
Appointee Tracy Blair	Director of Budgets	N/A

**LOUDON COUNTY COMMISSION**  
**RESOLUTION 100217-**

**RESOLUTION APPROVING OR ACKNOWLEDGING BOARD OR**  
**COMMITTEE APPOINTMENT BY COUNTY MAYOR**

*WHEREAS*, by statute, and/or intergovernmental agreement and/or County Procedural Regulations, the County Mayor has the authority to make certain committee and board appointments; and

*WHEREAS*, appointments are necessary and/or desirable at this time with a 1 year rotation term; and

*WHEREAS*, the County Mayor appoints the following members of the

**CAPITAL PROJECTS COMMITTEE**

<u>Appointee</u>		<u>Term Expiration</u>
Matthew Tinker	Commissioner	August 2018
Van Shaver	Commissioner	August 2018
Kelly Brewster	Commissioner	August 2018
Steve Harrelson	Commissioner	August 2018
Susan Huskey	Purchasing Director	August 2018

*NOW, THEREFORE, BE IT RESOLVED* that the Loudon County Commission, meeting in regular session assembled this 2nd day of October 2017 hereby approves or acknowledges (as appropriate) the said appointments.

\_\_\_\_\_  
COUNTY CHAIRMAN

**ATTEST:**

\_\_\_\_\_  
COUNTY CLERK

\_\_\_\_\_  
COUNTY MAYOR

**LOUDON COUNTY COMMISSION**  
**RESOLUTION 100217-**

**RESOLUTION APPROVING OR ACKNOWLEDGING BOARD OR**  
**COMMITTEE APPOINTMENT BY COUNTY MAYOR**

*WHEREAS*, by statute, and/or intergovernmental agreement and/or County Procedural Regulations, the County Mayor has the authority to make certain committee and board appointments; and

*WHEREAS*, appointments are necessary and/or desirable at this time with a 1 year rotation term; and

*WHEREAS*, the County Mayor appoints the following members of the

**PURCHASING COMMITTEE**

<u>Appointee</u>		<u>Term Expiration</u>
Harold Duff	Commissioner	August 2018
Kelly Brewster	Commissioner	August 2018
Steve Harrelson	Commissioner	August 2018
Van Shaver	Commissioner	August 2018
Buddy Bradshaw	County Mayor	August 2018
Susan Huskey	Purchasing Director	August 2018

*NOW, THEREFORE, BE IT RESOLVED* that the Loudon County Commission, meeting in regular session assembled this 2nd day of October 2017 hereby approves or acknowledges (as appropriate) the said appointments.

\_\_\_\_\_  
COUNTY CHAIRMAN

ATTEST:

\_\_\_\_\_  
COUNTY CLERK

\_\_\_\_\_  
COUNTY MAYOR

RESOLUTION \_\_\_\_\_

**A RESOLUTION AMENDING THE ZONING MAP OF LOUDON COUNTY, TENNESSEE, PURSUANT TO CHAPTER SEVEN, §13-7-105 OF THE TENNESSEE CODE ANNOTATED, TO REZONE APPROXIMATELY 7.65 ACRES, 16746 HWY. 11 E., LENOIR CITY, TN, LOUDON COUNTY TAX MAP 011, PARCEL 037.00 IN THE 5<sup>TH</sup> LEGISLATIVE DISTRICT FROM R-1 (SUBURBAN RESIDENTIAL DISTRICT) TO R-1 (SUBURBAN RESIDENTIAL DISTRICT) WITH PUD (PLANNED UNIT DEVELOPMENT OVERLAY) 2.5 UNITS PER ACRE**

**WHEREAS**, the Loudon County Commission, in accordance with Chapter Seven, §13-7-105 of the Tennessee Code Annotated, may from time to time, amend the number, shape, boundary, area or any regulation of or within any district or districts, or any other provision of any zoning resolution, and

**WHEREAS**, the Regional Planning Commission has forwarded a recommendation regarding the amendment to the Zoning Map of Loudon County, Tennessee,

**WHEREAS**, a notice of public hearing and a description of the resolution appeared in the Loudon County newspaper, the News Herald on August 30, 2017 consistent with the provisions of Tennessee Code Annotated, §13-7-105, and

**NOW, THEREFORE, BE IT RESOLVED** by the Loudon County Commission that the Zoning Map of Loudon County, Tennessee be amended as follows:

Located at 16746 Hwy. 11 E., situated in the 5<sup>th</sup> Legislative District, referenced by Tax Map 011, Parcel 037.00 be rezoned from R-1 (Suburban Residential District) to R-1 (Suburban Residential District) with PUD (Planned Unit Development Overlay) 2.5 units per acre density as shown on the attached map, said map being part of this Resolution.

**BE IT FINALLY RESOLVED**, that this Resolution shall take effect immediately, the public welfare requiring it.

\_\_\_\_\_  
ATTEST

\_\_\_\_\_  
LOUDON COUNTY CHAIRMAN

DATE: \_\_\_\_\_

\_\_\_\_\_  
**APPROVED: LOUDON COUNTY MAYOR**

The votes on the question of approval of this Resolution by the Planning Commission are as follows:

APPROVED:   10  

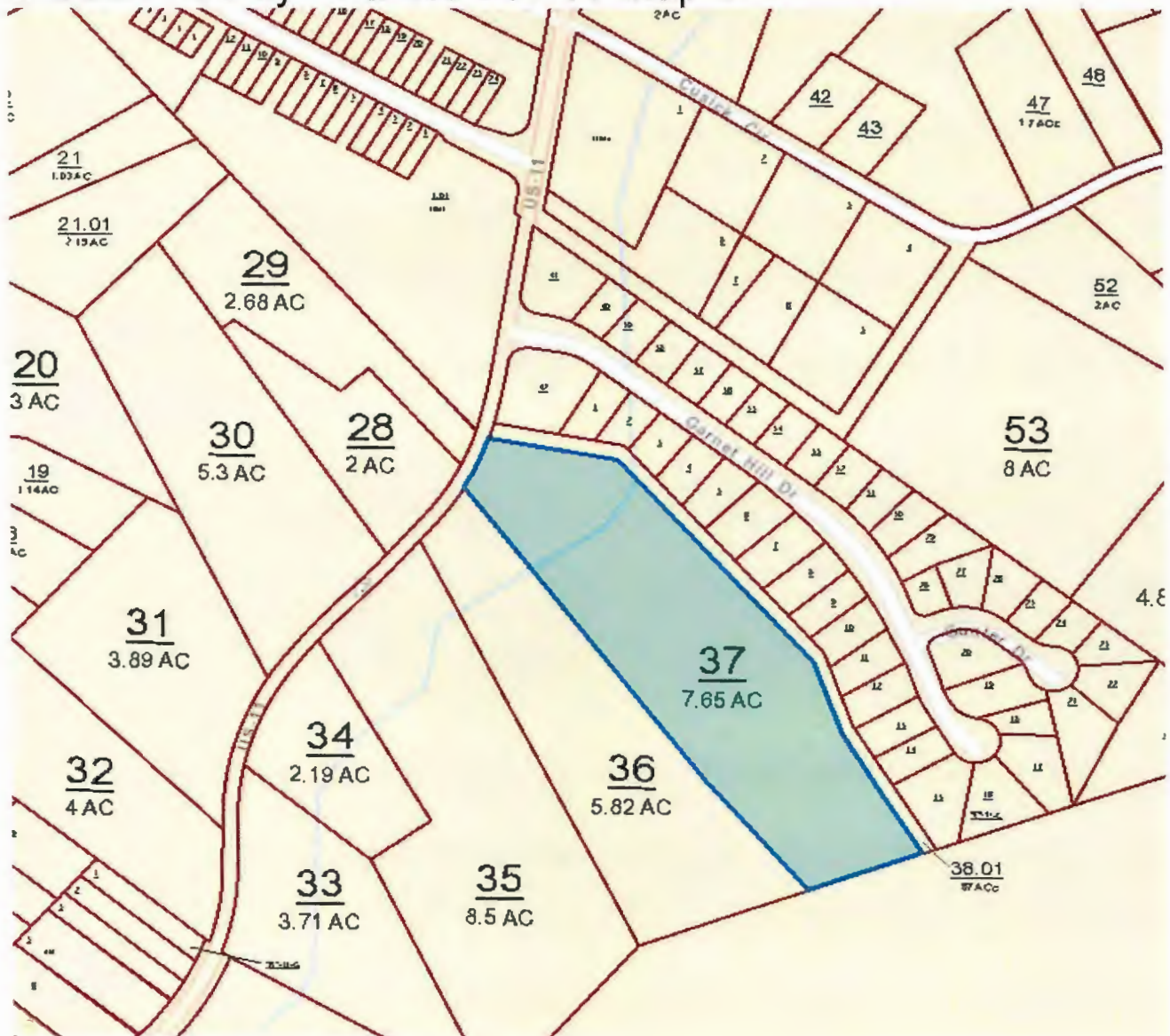
DISAPPROVED:   0  

*Pamela G. Mulew*  
**ATTEST: SECRETARY LOUDON COUNTY  
REGIONAL PLANNING COMMISSION**  
Dated: August 15, 2017

ATTACHMENT TO RESOLUTION \_\_\_\_\_

REZONE APPROXIMATELY 7.65 ACRES FROM R-1 (SUBURBAN RESIDENTIAL DISTRICT) TO R-1 (SUBURBAN RESIDENTIAL DISTRICT) WITH PUD (PLANNED UNIT DEVELOPMENT OVERLAY) 2.5 UNITS PER ACRE, 16746 HWY. 11 E., LENOIR CITY, TN, IN THE 5<sup>TH</sup> LEGISLATIVE DISTRICT.

Loudon County - Parcel: 037.00 Map 011



County: Loudon  
Owner: RENNICH JASON  
Address: HWY 11 E 16746  
Parcel Number: 011 037.00  
Deeded Acreage: 7.65  
Calculated Acreage: 0  
Date of Imagery: 2015

**LOUDON COUNTY, TENNESSEE  
BOARD OF COMMISSIONERS  
RESOLUTION \_\_\_\_\_**

**RESOLUTION ABANDONING OR RELEASING RIGHTS IN  
EASEMENTS AND HIGHWAY RIGHT-OF-WAY  
OF LOUDON COUNTY GOVERNMENT**

WHEREAS, Loudon County (the "County") is authorized to acquire and dispose of property for County purposes pursuant to Tenn. Code Ann. § 5-7-101; and

WHEREAS, the Tennessee Valley Authority Act of 1933, 16 U.S.C. § 831 *et seq.*, created the Tennessee Valley Authority ("TVA"), and gave it the power to acquire, operate, and maintain property for the purposes set forth therein, including to improve navigation and control the flood waters of the Tennessee River; and

WHEREAS, the County, pursuant to and upon consideration expressed in TVA Contract No. TV-39548A, dated July 25, 1974, attached hereto as Exhibit 1, entered into an agreement with TVA to provide for the protection, relocation, or adjustment of or settlement for all roads, highways, and bridges wholly or partly within the County which were at risk of being closed or adversely affected by flood waters resulting from TVA's construction, operation, and maintenance of the Tellico Dam and Reservoir, as more fully described in Exhibit 1; and

WHEREAS, TVA transferred and conveyed back to Loudon County certain roads, rights-of-way, and easements, including the right-of-way, known as the "Davis School Road Project," consisting of a strip of land of varying width lying on each side of the centerline of Davis School Road in the First Civil District of the County, as more fully described in the Grant and Conveyance of Easements and Highway Rights of Way, recorded October 27, 1993, in the Register's Office of Loudon County, Tennessee, Book No. 209, beginning on page 116 and ending on page 125, and attached hereto as Exhibit 2; and

WHEREAS, the County has determined, based on the recommendation of the County Highway Superintendent, that it no longer needs the above identified right-of-way, as shown as a strip of land of varying width, from around 150 feet to around 160 feet, on the surveys attached hereto as Exhibit 3 and Exhibit 4, and wishes to abandon the right-of-way and release any rights in it to the current property owner(s), while reserving and retaining all other property rights conveyed to it by TVA, as identified in Exhibit 2.

NOW THEREFORE, BE IT RESOLVED, by the Loudon County Board of Commissioners, in regular session assembled this \_\_\_\_ day of \_\_\_\_\_, 2017, that the County, remises, releases, and forever quitclaims any and all interest of the County in the above described right-of-way, as shown as a strip of land of varying width, from around 150 feet to around 160 feet, on the surveys attached hereto as Exhibit 3 and Exhibit 4, to the true and lawful owner(s) of the property over which the right-of-way lies. The County reserves and expressly retains all other rights, title, and interest conveyed to it by TVA in the Grant and Conveyance of Easements and Highway Rights of Way attached hereto as Exhibit 2.

BE IT FURTHER RESOLVED, this resolution shall take effect immediately, the public welfare requiring it.

ATTEST:

\_\_\_\_\_  
Darlene M. Russell, County Clerk

APPROVED:

\_\_\_\_\_  
Rollen (Buddy) Bradshaw, Mayor

\_\_\_\_\_  
Chairman, Loudon County, Tennessee  
Board of Commissioners



LAN 20 (L)  
CONTRACT TV-39548A

CONTRACT  
BETWEEN  
TENNESSEE VALLEY AUTHORITY  
AND  
LOUDON COUNTY, TENNESSEE  
RELATING TO  
HIGHWAY ADJUSTMENTS - TELlico RESERVOIR



THIS AGREEMENT, made and entered into as of the 25<sup>th</sup> day of July, 1974, by and between TENNESSEE VALLEY AUTHORITY (hereinafter called "TVA"), a corporation created by an act of Congress known as the Tennessee Valley Authority Act of 1933, as amended, and LOUDON COUNTY, TENNESSEE (hereinafter called "County"), a political subdivision of the State of Tennessee, acting herein by and through its duly authorized representatives, its Highway Commission and its County Court;

WITNESSETH:

WHEREAS, TVA, pursuant to the powers vested in it by the Tennessee Valley Authority Act of 1933, as amended, is engaged in the construction of the Tellico Dam on the Little Tennessee River at a site located at approximately river mile 0.4, the normal maximum reservoir operating level of which will be at elevation 813 feet above mean sea level (MSL), with the top of the spillway gates at the dam to be at elevation 815 MSL; and

EXHIBIT 1

WHEREAS, the construction, maintenance, and operation of said dam and of the reservoir to be created thereby will flood or close or otherwise adversely affect certain portions of public roads, highways, and bridges of the County; and

WHEREAS, County desires to agree with TVA concerning the performance of road, highway, and bridge construction, relocation, and/or protection work necessitated by the Tellico Project, and to settle and dispose of all claims and demands of County with respect to all roads, highways, and bridges adversely affected by said dam and reservoir.

NOW, THEREFORE, in consideration of the premises and of the mutual covenants and promises hereinafter set forth, it is mutually agreed by and between the parties hereto as follows:

1. TVA will prepare plans for all projects designated in exhibit A. All plans and specifications shall be approved by County prior to the commencement of the work provided for herein.

2. TVA shall, at its own expense, perform or cause to be performed the road and highway construction work and/or protective adjustments described and specified for performance by TVA in the other sections of this agreement and in the descriptive schedule which is attached hereto as exhibit A, the location of such work and adjustments being substantially as shown on the map attached hereto as exhibit B. TVA shall also obtain and provide rights of way as specified in said exhibit A for all projects except 3321. TVA shall commence the work and adjustments to be performed by it hereunder within a reasonable time after the execution of this agreement, and shall prosecute such work to completion with reasonable diligence, subject to availability of funds for this purpose and the legal right to proceed with the work.

3. TVA and County agree to acquire their respective portions of rights of way for projects 3321 and 3322 prior to impoundment of Tellico Reservoir to facilitate construction of these projects by the County at some future date. TVA will construct a temporary connection to relocated Tennessee State Highway 72 on the right of way acquired for project 3322.

4. The parties recognize that the construction, maintenance, and operation of Tellico Dam and Reservoir may have the effect of flooding and completely destroying all existing direct access to a public road from certain tracts of land located within the County which will not have direct access to any of the roads or sections of roads to be constructed or provided under other sections of this agreement. TVA shall, as to any tract of land which is subject to loss of all direct access to a public road as aforesaid, either (a) construct a tertiary road to serve such tract, or (b) purchase or otherwise acquire such tract in fee in the name of the United States of America; provided, however, that the alternative to be adopted for or applied to any such tract or tracts of land shall be determined exclusively by TVA in its sole discretion; provided, further, that any tertiary road or roads constructed under alternative (a) above which serve more than one property owner shall become a part of the County road system, it being the intent of the parties that tertiary roads serving only one property owner shall not become a part of the County road system but shall be private roads; tertiary roads which at the date of this agreement TVA has determined necessary to serve more than one property owner are described in exhibits A and B of this agreement; additional roads which may subsequently be determined necessary and which shall become part of the County road system shall comply with the general specifications for tertiary roads set out on pages 6 and 7 in exhibit A; and provided further, that TVA shall have and hereby reserves the right, at any time after

the waters of Tellico Reservoir first reach elevation 813 feet above mean sea level, to sell or dispose of any such tract or tracts which may be acquired under alternative (b) above. In selling or disposing of any tract acquired under alternative (b) above, TVA shall require the purchaser thereof to provide access to a public road from said tract.

5. Effective as of the date of completion of all projects (except project 1001) set forth in exhibit A, County, for and upon the consideration under this agreement, hereby transfers, conveys, assigns, quitclaims, and releases unto the United States of America all right, title, and interest which County and the public may have in and to any portion of roads, highways, and bridges, including appurtenances, within Loudon County, Tennessee, which lie below elevation 815 MSL and within the reservoir created by Tellico Dam. County agrees that it will, upon TVA's request, take such formal action as may be necessary or appropriate to effect the legal vacation and abandonment of any portion of said roads, highways, and bridges which lie below elevation 815 MSL; in order to protect the interests of the County, County further agrees that such action will be taken prior to impoundment of Tellico Reservoir.

County further agrees to cooperate fully with TVA in the accomplishment of the road relocation and/or protection program provided for in this agreement, and to take necessary action in connection therewith which may be reasonably requested by TVA, relating to the execution and delivery to TVA or the United States of America, in form suitable for recording, of any deeds, documents, resolutions, or other instruments which TVA may consider necessary or desirable to carry out the above conveyance and transfer, or to carry out any other portions or provisions of this agreement.

6. County hereby releases TVA and the United States of America from any and all claims and causes of action which County, the traveling public, and/or the owners of land within the County may now or hereafter have or assert against them, or either of them, arising out of the flooding, or closing of, or damage to, or impairment of the value, usability, or convenience of, any public and/or County highways, roads, or bridges located within the limits of the County, where such flooding, closing, damage, or impairment is the result of or is claimed to have resulted from the construction, maintenance, or operation of Tellico Dam and Reservoir; and County hereby expressly covenants that it will not maintain or attempt to maintain any suit or cause of action against TVA or the United States of America based upon or arising out of any such flooding, closing, damage, or impairment; provided, however, that nothing herein contained shall be deemed to apply to or preclude any action by County to enforce compliance or to recover damages growing out of noncompliance by TVA with any of its covenants and agreements herein contained, or to enforce or protect rights herein reserved; provided, further, that nothing herein contained shall be construed as imposing upon County liability for negligent acts of TVA while engaged in performance or execution of the work provided for herein.

7. All roads, highways, bridges, barricades, and other facilities which are constructed by TVA under this agreement shall be maintained by TVA during the period of construction only, except projects 1001 and 1101 which TVA will continue to maintain. After notification by TVA of the completion of

work on all or any section of any road, highway, or bridge construction under this agreement, except projects 1001 and 1101, and after inspection and acceptance by the County, County shall open for public travel and use and assume the expense and responsibility of maintenance, repair, and upkeep of all such sections of roads, highways, bridges, barricades, and other facilities and appurtenances embraced within each such project or tertiary road and thereafter hold TVA and the United States of America forever harmless from any liability for or on account of any loss, injury, or damage to persons or property sustained by any person or persons arising from or in any way connected with the design, construction, condition, upkeep, care, use, or maintenance of said project or the facilities or appurtenances embraced therein; provided, however, that this provision shall not become operable with respect to claims resulting from deficiencies in construction or design until one year has elapsed from the date of acceptance by County of each project or tertiary road.

8. It is understood and agreed that the representatives acting for and on behalf of the County are duly authorized to execute this agreement and to bind the County for the purposes herein specified.

9. No member of or delegate to Congress or resident commissioner or any officer or agent of TVA shall be admitted to any share or part of this contract or to any benefit that may arise therefrom, but this provision shall not be construed to extend to this contract if made with a corporation for its general benefit.

IN WITNESS WHEREOF, the parties hereto have caused this instrument to be executed by their respective representatives thereunto duly authorized as of the day and year first above written.

ATTEST:

Madal Evans  
Assistant Secretary

TENNESSEE VALLEY AUTHORITY

By [Signature]  
Acting General Manager

*Law. HHC*

ATTEST:

Edward Alexander  
County Court Clerk  
Loudon County, Tennessee

LOUDON COUNTY, STATE OF TENNESSEE  
By County Court of Loudon County,  
Tennessee

By [Signature]  
County Judge

And [Signature]  
Chairman of Highway Commission  
Loudon County, Tennessee

Approved by TVA  
Board of Directors  
JUL 25 1974  
M.E.  
ASSISTANT SECRETARY

EXHIBIT A

SCHEDULE ATTACHED TO AND FORMING A PART OF AN AGREEMENT  
BETWEEN TENNESSEE VALLEY AUTHORITY AND LOUDON COUNTY, TENNESSEE,  
IN REGARD TO ROAD RELOCATIONS AND CONSTRUCTION  
IN THE TELlico RESERVOIR AREA

The work to be performed under this contract shall be in accordance with plans prepared by TVA for the following designated projects, which shall be constructed by and at the expense of TVA:

Project 1001 - Access Road to Tellico Dam

This project begins at Tennessee Highway 95 south of Fort Loudoun Dam and extends in a westerly direction, crossing the Little Tennessee River downstream from Tellico Dam, and ends approximately 1/2 mile southwest of Tellico Dam. The roadway shall have a minimum width of 40 feet exclusive of ditches. The pavement shall consist of an asphaltic concrete surface and a bituminous concrete base having a minimum width of 22 feet and a minimum thickness of 4 inches on a stabilized stone base having a minimum thickness of 8 inches. A bridge having a minimum clear roadway width of 30 feet shall be constructed across the Little Tennessee River. The length of this project is approximately 1.5 miles.

Project 1101 - Tellico Parkway

This project begins at the southwest end of project 1001 and extends in a southerly and westerly direction, generally paralleling Tellico Reservoir, to a connection with relocated Tennessee Highway 72 north of Fork Creek. Connections will be made to four existing county roads (Poplar Springs Road, Davis Ferry Road, Davis School Road, and Russell Store Road). The roadway shall have a minimum width of 40 feet exclusive of ditches. The pavement shall consist of an asphaltic concrete surface and a bituminous concrete base having a minimum width of 22 feet and a minimum thickness of 4 inches on a stabilized stone base having a minimum thickness of 8 inches. The length of this project is approximately 9.5 miles.



**Project 3203 - River Road at Axley Cemetery**

This project consists of reconstructing a section of an existing county road at a small hollow approximately 1/2 mile west of Axley Cemetery. The roadway shall have a minimum width of 26 feet exclusive of ditches with 4-inch thickness of crushed stone surfacing 20 feet wide. The length of this project is approximately 0.4 mile.

**Project 3216 - County Road West of Tennessee Highway 95**

This project consists of reconstructing a short section of an existing county road at a small hollow west of Tennessee Highway 95. The roadway shall have a minimum width of 28 feet exclusive of ditches with 4-inch thickness of crushed stone surfacing 20 feet wide. The length of this project is approximately 0.2 mile.

**Project 3217 - Sinking Creek Road**

This project begins at project 3221 and extends eastwardly along the north side of Sinking Creek to a connection with temporary Highway 95. The roadway shall have a minimum width of 32 feet exclusive of ditches. The pavement shall consist of a bituminous surface treatment having a minimum width of 24 feet on a stabilized stone base having a minimum thickness of 8 inches. The length of this project is approximately 1.4 miles.

**Project 3221 - River Road - Baker Creek to Sinking Creek**

This project begins on the south side of Baker Creek and extends along the general location of the existing road to a point north of Sinking Creek. The roadway shall have a minimum width of 40 feet exclusive of ditches. The pavement shall consist of a 1-1/4-inch asphaltic concrete surface having a minimum width of 24 feet on a stabilized stone base having a minimum thickness of 8 inches. Bridges having a minimum clear roadway width of 30 feet shall be constructed across Baker Creek and Sinking Creek. The bridges shall be of concrete or concrete and steel construction with a concrete substructure and designed for a minimum live load of HS-20, in accordance with the latest edition of AASHTO Specifications for Highway Bridges. The length of this project is approximately 4.5 miles.

**Project 3222 - Gap Road**

This project consists of upgrading the existing road north of U.S. Highway 411 by straightening the alignment, widening, and paving. The roadway shall have a minimum width of 40 feet exclusive of ditches. The pavement shall consist of a 1-1/4-inch asphaltic concrete surface having a minimum width of 24 feet on a stabilized stone base having a minimum thickness of 8 inches. The length of this project is approximately 1.3 miles.

**Project 3292 - Blalock-Smith Road**

This road will be constructed on a new location to serve several properties east of Davis Ferry whose existing access road will be inundated by Tellico Reservoir. The roadway shall have a minimum width of 26 feet exclusive of ditches with 4-inch thickness of crushed stone surfacing 20 feet wide. The length of this project is approximately 0.5 mile.

**Project 3294 - Morganton Cemetery Road**

This project consists of constructing an access road from project 3221 (River Road - Baker Creek to Sinking Creek) near Baker Creek to Morganton Cemetery whose existing access will be inundated by Tellico Reservoir. The roadway shall have a minimum width of 26 feet exclusive of ditches with 4-inch thickness of crushed stone surfacing 20 feet wide. The length of this project is approximately 0.5 mile.

**Project 3305 - Morganton Ferry Road**

This project consists of reconstructing a short section of the existing Morganton Ferry Road at its intersection with old State Highway 72. The roadway shall have a minimum width of 28 feet exclusive of ditches with 4-inch thickness of crushed stone surfacing 20 feet wide. The length of this project is approximately 0.2 mile.

**Project 3318 - Watkins Lane Road**

A section of Watkins Lane Road at the crossing of the east fork of Clear Prong Creek will be reconstructed to a minimum elevation of 819. The roadway shall have a

minimum width of 28 feet exclusive of ditches. The pavement shall consist of a bituminous surface treatment having a minimum width of 20 feet on a stabilized stone base having a minimum thickness of 8 inches. The length of this project is approximately 0.1 mile.

**Project 3321 - Poplar Springs Road**

This project consists of the acquisition by the County of right of way for future reconstruction by the County of a section of existing road from Poplar Springs to Tellico Parkway. The length of this project is approximately 0.8 mile.

**Project 3322 - Davis School Road**

This project consists of the acquisition of right of way by TVA for future construction by the County of a road beginning approximately 0.3 mile west of relocated Tennessee Highway 72 and extending in a northeasterly direction across relocated Tennessee Highway 72 to connect with an existing road near Davis School. The length of this project is approximately 1.5 miles.

**Project 3323 - Frontage Road North of Relocated State Highway 72 Near Davis School Road**

This project consists of extending an existing county road adjacent to relocated State Highway 72 to serve as a frontage road. The roadway shall have a minimum width of 26 feet exclusive of ditches with 4-inch thickness of crushed stone surfacing 20 feet wide. The length of this project is approximately 0.13 mile.

**Project 3324 - Frontage Road South of Relocated State Highway 72 at Corinth Road**

This project consists of constructing a frontage road south of State Highway 72. The frontage road will connect an existing county road to the Corinth Road approximately 0.5 mile west of Clear Prong Creek. The roadway shall have a minimum width of 26 feet exclusive of ditches with 4-inch thickness of crushed stone surfacing 20 feet wide. The length of this project is approximately 0.15 mile.

Project 3391 - Watkins Road

This project begins at the Corinth Road approximately 0.5 mile west of Clear Prong Creek and extends in a southerly and easterly direction to provide access to properties whose present route of access will be inundated by Tellico Reservoir. The roadway shall have a minimum width of 26 feet exclusive of ditches with 4-inch thickness of crushed stone surfacing 20 feet wide. The length of this project is approximately 0.3 mile.

Project 3392 - Smith Cemetery Road

This project consists of extending an existing county road north of Morganton Ferry Road to Smith Cemetery whose existing access will be inundated by Tellico Reservoir. The roadway shall have a minimum width of 26 feet exclusive of ditches with 4-inch thickness of crushed stone surfacing 20 feet wide. The length of this project is approximately 0.5 mile.

Project 3393 - Tipton Cemetery Road

This project consists of constructing an access road from Morganton Ferry Road to Tipton Cemetery whose existing access will be inundated by Tellico Reservoir. The roadway shall have a minimum width of 26 feet exclusive of ditches with 4-inch thickness of crushed stone surfacing 20 feet wide. The length of this project is approximately 0.2 mile.

Project 3394 - Davis Cemetery Road

This project consists of constructing an access road from Tellico Parkway to Davis Cemetery whose existing access will be inundated by Tellico Reservoir. The roadway shall have a minimum width of 26 feet exclusive of ditches with 4-inch thickness of crushed stone surfacing 20 feet wide. The length of this project is approximately 0.2 mile.

Project 3395 - Blair Cemetery Road

This project consists of constructing an access road from Tellico Parkway to Blair Cemetery whose existing access will be inundated by Tellico Reservoir. The roadway shall have a minimum width of 26 feet exclusive of ditches with 4-inch thickness of crushed stone surfacing 20 feet wide. The length of this project is approximately 0.7 mile.

**Project 3396 - Coffman-Burton Cemetery Road**

This project consists of constructing an access road from Fork Creek Road approximately 0.1 mile south of Fork Creek to Coffman and Burton Cemeteries whose existing access will be inundated by Tellico Reservoir. The roadway shall have a minimum width of 26 feet exclusive of ditches with 4-inch thickness of crushed stone surfacing 20 feet wide. The length of this project is approximately 1.2 miles.

**Project 3397 - Russell Cemetery Road**

This project consists of constructing an access road from project 3396 (Coffman-Burton Cemetery Road) to Russell Cemetery whose existing access will be inundated by Tellico Reservoir. The roadway shall have a minimum width of 26 feet exclusive of ditches with 4-inch thickness of crushed stone surfacing 20 feet wide. The length of this project is approximately 0.5 mile.

General Specifications

Any projects constructed under this contract and located upstream from Tellico Dam shall have a minimum elevation at the centerline of the finished roadway of 820 feet above mean sea level (except project 3318). Major drainage structures shall consist of concrete or concrete and steel bridges or reinforced concrete box culverts. Small drainage structures shall consist of paved invert ferrous corrugated metal, ferrous corrugated metal structural plate, aluminum alloy corrugated metal, or reinforced concrete pipe culverts. The minimum graded width of roadway on any tertiary roads to be transferred to the County shall be 26 feet, with the crushed stone surface to be 20 feet wide.

Any roads constructed under the provisions of alternative (a) of paragraph 4 of the contract are designated tertiary roads. The construction of any such tertiary roads shall be performed by TVA in their entirety and shall include grading, drainage, and a crushed stone surface.

The following specifications shall apply to all projects constructed under this contract. Slopes in earth cuts shall not be steeper than 1 on 1-1/2. Slopes in rock cuts may be such as in the judgment of TVA and County will stand satisfactorily. Embankment slopes shall not be steeper than 1 on 1-1/2. Slopes on sections of embankments across the reservoir shall be determined by TVA and shall be such as, in the judgment of TVA, are stable under conditions of intermittent flooding. Ditches on all roads shall be V-shaped and shall have a minimum width of 4 feet on top and a minimum depth of 1 foot.

Embankment sections on any project constructed under this contract which are below elevation 815 feet above mean sea level, and which in the judgment of TVA require protection due to erosion by wave action, shall be protected by placing stone revetment on the slopes.

TVA shall place steel, concrete, or pressure-treated creosoted timber guard posts, spaced 12-1/2 feet on centers (or at TVA's option steel beam guardrail) on portions of projects immediately adjacent to or crossing the lake created by Tellico Dam and at any other locations which TVA deems necessary.

Paving or crushed stone surfacing shall be constructed as described on the projects listed herein. On tertiary roads crushed stone shall be applied at the minimum rate of 600 tons per mile for roads serving one property and at the minimum rate of 4-inch thickness for roads which are to be transferred to the County.

Rights of way not presently owned by the County and necessary for constructing any projects, except that portion of project 3321 lying outside the limits of lands to be acquired by TVA for the Tellico Reservoir, will be

obtained by TVA without cost of the County, and after completion of the construction work these rights of way, except for projects 1001 and 1101, will be transferred to the County; provided, however, that rights of way for tertiary roads serving only one property owner may be obtained in the name of or transferred to the said property owner. The minimum width of rights of way for projects described herein shall be 60 feet, except for projects 1101 and 3221 which shall be 120 feet. The minimum width of rights of way for tertiary roads shall be 50 feet.

TVA shall construct turnarounds of approximately 40-foot radius on existing roads which are maintained by the County and which dead end at the reservoir.

Earth cut and fill slopes and other disturbed areas shall be seeded and mulched and shall be maintained until a satisfactory growth of grass is secured. These areas shall be preserved, repaired, protected, reseeded, and mulched as required for this purpose.

All construction work to be performed by TVA shall be in accordance with Tennessee Valley Authority specifications for highway construction.

RESOLUTION OF COUNTY COURT OF  
LOUDON COUNTY, TENNESSEE

WHEREAS, the Tennessee Valley Authority (hereinafter called "TVA") is engaged in the construction of Tellico Dam and Reservoir, the construction, maintenance, and operation of which will flood, close, or otherwise adversely affect certain portions of public roads, highways, and bridges located within Loudon County, Tennessee (hereinafter called "County"); and

WHEREAS, representatives of TVA have negotiated with the County Judge and the Highway Commission concerning the relocation, replacement, or improvement of the said County roads and bridges which will be affected or damaged by said reservoir, and have submitted to this Court a proposed agreement between TVA and County, providing for, among other things, the relocation, protection, or adjustment of, or settlement for all roads, highways, and bridges in the County which will be affected by Tellico Dam and Reservoir, all as more fully set forth therein; and

WHEREAS, it being the opinion of this Court that it is to the best interest of County to enter into said agreement, and that the considerations flowing to County under said agreement are full, fair, and adequate, and that the compensation therein specified is just compensation for the property taken by TVA, and this Court being of the opinion that said agreement should be entered into by County;

NOW, THEREFORE, BE IT RESOLVED, that the County Court of Loudon County, in session duly assembled, hereby finds and declares it to be advisable and for the best interest of County that it enter into the agreement between TVA and Loudon County providing for the protection, relocation,



or adjustment of or settlement for all roads, highways, and bridges wholly or partly within the County which will be closed or adversely affected by Tellico Dam and Reservoir, which agreement has been discussed and considered at this session of the Court, and this Court does hereby enter into such agreement; and

BE IT FURTHER RESOLVED, that the Honorable HARVEY L. SPROUL, Judge of the County Court of Loudon County, Tennessee, be, and he hereby is authorized and directed for and on behalf of this Court and for and on behalf of County to execute said agreement and deliver it to TVA; and

BE IT FURTHER RESOLVED, that a copy of said agreement shall be attached to and become a part of this resolution and that this resolution, with a copy of said agreement attached thereto, be spread upon the minutes of this Court.

\* \* \* \*

I, Edward Alexander Clerk of the County Court of Loudon County, Tennessee, hereby certify that the above and foregoing is a true and correct copy of a resolution duly presented, moved, put, and carried by 9 yea votes and 0 nay votes at a meeting of the County Court of Loudon County, Tennessee, duly called and held at which a quorum was present upon the 18<sup>th</sup> day of June, 1974.

Edward Alexander  
Clerk

Prepared by  
Tennessee Valley Authority  
Knoxville, Tennessee 37902  
MAP 75 PARCEL N/A

Tellico Reservoir  
Conveyance Pursuant  
to Contract No. TV-39548A

Person or Agency Responsible for payment of Taxes & Owner  
Name Loudon County  
Address River Road  
Loudon, TN. 37774

GRANT AND CONVEYANCE  
OF EASEMENTS AND  
HIGHWAY RIGHTS OF WAY

FROM  
THE UNITED STATES OF AMERICA  
AND  
TENNESSEE VALLEY AUTHORITY  
TO  
LOUDON COUNTY, TENNESSEE

THIS GRANT AND CONVEYANCE, made and entered into by and between the United States of America acting herein by and through the Tennessee Valley Authority, a corporation created by and existing under an act of Congress known as the Tennessee Valley Authority Act of 1933, as amended, which authorizes it to act in the name of and as agent for the United States of America, as Grantor, and Loudon County, Tennessee, a political subdivision of the State of Tennessee, as Grantee;

W I T N E S S E T H:

That pursuant to and for and upon the considerations expressed in an agreement between Tennessee Valley Authority and Loudon County, Tennessee, identified by Tennessee Valley Authority's Contract No. TV-39548A, dated July 25, 1974, relating to highway adjustments due to the construction and operation of Tellico Dam and Reservoir, but subject to any exceptions or reservations hereinafter contained, and further subject to said contract, the Grantor does hereby remise, release, grant, transfer, convey, and forever quitclaim unto the Grantee easements and rights of way for highway purposes, together with the roads, highways, bridges, and appurtenances located thereon, including the perpetual right to enter upon and clear, level, fill, drain, pave, build, erect, maintain, repair, and rebuild roads and highways, including appurtenances on, over, across, or under the ground embraced within the easements and rights of way herein granted and conveyed.

EXHIBIT 2

The lands affected by the easements and rights of way herein granted and conveyed are located in the County of Loudon, State of Tennessee, and are more particularly described as follows:

SUMMARY

<u>Project</u>	<u>Description</u>
65-3216	County Road West of Tennessee Highway 95
65-3217	Sinking Creek Road
65-3292	Blalock-Smith Road
65-3322	Davis School Road
65-3323	Frontage Road North of Relocated State Highway 72 Near Davis School Road
65-3324	Frontage Road South of Relocated State Highway 72 Near Corinth Road
65-3391	Watkins Road

TELLICO PROJECT  
COUNTY ROAD WEST OF TENNESSEE HIGHWAY 95  
PROJECT 65-3216

A strip of land of varying width lying on each side of the centerline of County Road West of Tennessee Highway 95 in the Third Civil District of Loudon County, Tennessee, beginning at a point on the centerline identified as survey station 3 + 00, said point being 140.67 feet N. 17° 57' 40" E. of Tennessee State plane coordinate N. 505,526.86, E. 2,522,887.27 and extending to survey station 26 + 51.5, said point being 457.03 feet S. 40° 02' 30" E. of Tennessee State plane coordinate N. 504,578.51, E. 2,523,191.81, a distance of 2351.5 feet; said strip containing 7.05 acres, more or less, as shown on a TVA drawing recorded in the office of the Register of Loudon County, Tennessee, as follows:

<u>Drawing</u>	<u>Cabinet</u> <del>Plot Book</del>	<u>Slide</u> <del>Page</del>	<u>Filing Date</u>
65HR5-3216R/W-1	B	97	9-2-83

The above-described easement and right of way being located over fee land and upon easements and rights of way acquired by the United States of America as shown in instruments filed in the office of the Register of Loudon County, Tennessee, as follows:

FEE TRACTS

<u>Tract</u>	<u>Grantor/Owner</u>	<u>Instrument</u>	<u>Recorded Date</u>	<u>Deed Book</u>	<u>Page</u>
TELR-123	Verlin R. Bright, <u>et ux.</u>	Deed	3-4-68	87	181
TELR-140	Lenoir City Company, <u>et al.</u>	Declaration of Taking Judgment	5-21-75 10-7-75	120 121	378 875
TELR-142	Minnie Bivens	Deed	12-2-67	86	325

EASEMENTS AND RIGHTS OF WAY

<u>Tract</u>	<u>Grantor/Owner</u>	<u>Instrument</u>	<u>Recorded Date</u>	<u>Deed Book</u>	<u>Page</u>
TELCR-137	Henry Mizell, <u>et ux.</u>	Easement	12-5-74	119	188
TELCR-138	Shirley Graves	Easement	2-12-75	119	574
TELCR-139	Paul Malone, <u>et ux.</u>	Easement	2-12-75	119	577

TELCR-140	Verlin R. Bright, <u>et ux.</u>	Declaration of Taking	4-25-75	120	143
		Judgment	4-25-75	120	148
TELCR-141	Joe Vineyard, <u>et ux.</u>	Easement	11-21-75	122	401
TELCR-142	Albert Joe Bell, <u>et al.</u>	Declaration of Taking	11-4-75	122	243
		Judgment	3-31-76	123	774

TELLICO RESERVOIR  
SINKING CREEK ROAD  
PROJECT 65-3217

A strip of land of varying width lying on each side of the centerline of Sinking Creek Road in the Third Civil District of Loudon County, Tennessee, beginning at a point on the centerline identified as survey station 10 + 44.86, said point being 380.14 feet S. 85° 49' 20" W. of Tennessee State plane coordinate N. 477,932.26, E. 2,525,736.34 and extending to survey station 87 + 27.7, said point being 498.72 feet N. 61° 19' 20" E. of Tennessee State plane coordinate N. 478,935.54, E. 2,530,821.73, a distance of 7682.84 feet; said strip containing 19.5 acres, more or less, as shown on TVA drawings recorded in the office of the Register of Loudon County, Tennessee, as follows:

<u>Drawing</u>	<u>Cabinet <del>Plot Book</del></u>	<u>Slide <del>Page</del></u>	<u>Filing Date</u>
65HR5-3216R/W-1	B	97	9-2-83
65HR5-3217R/W-1	B	97	9-2-83

The above-described easement and right of way being located over fee land and upon easements and rights of way acquired by the United States of America as shown in instruments filed in the office of the Register of Loudon County, Tennessee, as follows:

FEE TRACTS

<u>Tract</u>	<u>Grantor</u>	<u>Instrument</u>	<u>Recorded Date</u>	<u>Deed Book</u>	<u>Page</u>
TELR-614	H. C. Greenway, <u>et al.</u>	Deed	10-30-70	100	298
TELR-615	William Tell Beeler, <u>et ux.</u>	Deed	12-17-70	101	26
TELR-616	Walter Heaton, <u>et al.</u>	Deed	4-26-71	102	269

EASEMENTS AND RIGHTS OF WAY

<u>Tract</u>	<u>Grantor</u>	<u>Instrument</u>	<u>Recorded Date</u>	<u>Deed Book</u>	<u>Page</u>
TELCR-146	H. C. Greenway, Jr., <u>et al.</u>	Easement	3-24-76	123	665
TELCR-147	William Tell Beeler, <u>et ux.</u>	Easement	5-7-76	124	226
TELCR-148	Walter Heaton, <u>et ux.</u>	Easement	4-13-76	123	925
TELCR-149	Joseph Erskin Blankenship, <u>et al.</u>	Easement	7-13-76	125	52
TELCR-150	Paul Bailey, <u>et ux.</u>	Easement	5-4-76	124	187
TELCR-151	Kenneth E. Byrd, <u>et ux.</u>	Easement	4-2-76	123	808
TELCR-204	Paul Bailey, <u>et ux.</u>	Easement	5-4-76	124	187

TELLICO RESERVOIR  
BLALOCK-SMITH ROAD  
PROJECT 65-3292

A strip of land of varying width lying on each side of the centerline of Blalock Smith Road in the Third Civil District of Loudon County, Tennessee, beginning at a point on the centerline identified as survey station 5 + 10.99, said point being 236.78 feet S. 86° 30' 10" W. of Tennessee State plane coordinate N. 494,617.45, E. 2,524,957.94 and extending to survey station 26 + 82.12, said point being 388.36 feet N. 40° 51' 50" E. of Tennessee State plane coordinate N. 495,788.91, E. 2,525,807.59, a distance of 2171.13 feet; said strip containing 3.8 acres, more or less, as shown on a TVA drawing recorded in the office of the Register of Loudon County, Tennessee, as follows:

<u>Drawing</u>	<u>Cabinet</u> <del>Plot-Book</del>	<u>Slide</u> <del>Page</del>	<u>Filing Date</u>
65HR5-3217R/W-1	B	97	9-2-83

The above-described easement and right of way being located upon easements and rights of way acquired by the United States of America as shown in instruments filed in the office of the Register of Loudon County, Tennessee, as follows:

EASEMENTS AND RIGHTS OF WAY

<u>Tract</u>	<u>Grantor</u>	<u>Instrument</u>	<u>Recorded Date</u>	<u>Deed Book</u>	<u>Page</u>
TELCR-182	James W. Hammtree, <u>et ux.</u>	Easement	6-8-76	124	647
TELCR-183	Benjamin F. Howard, <u>et ux.</u>	Easement	8-17-76	125	528
TELCR-184	Veola Carter, <u>et al.</u>	Easement	1-10-77	127	169,175 180,185 190,195 200,205 210
			8-23-77	130	67

TELLICO RESERVOIR  
DAVIS SCHOOL ROAD  
PROJECT 65-3322

A strip of land of varying width lying on each side of the centerline of Davis School Road in the First Civil District of Loudon County, Tennessee, beginning at a point on the centerline identified as survey station 17 + 59.87, said point being 186.56 feet S. 66° 52' 50" W. of Tennessee State plane coordinate N. 480,989.95, E. 2,500,045.79 and extending to survey station 29 + 40. Then continuing from survey station 31 + 99.2 and extending to survey station 100 + 01.97, said point being 611.27 feet N. 60° 30' 00" E. of Tennessee State plane coordinate N. 484,212.04, E. 2,506,603.36, a distance of 7982.9 feet; said strip containing 26.6 acres, more or less, as shown on TVA drawings recorded in the office of the Register of Loudon County, Tennessee, as follows:

<u>Drawing</u>	<u>Cabinet</u> <del>Plot-Book</del>	<u>Slide</u> <del>Page</del>	<u>Filing Date</u>
65HR5-3217R/W-2	B	97	9-2-83
65HR5-3322R/W-1	B	102	9-2-83

The above-described easement and right of way being located upon easements and rights of way acquired by the United States of America as shown in instruments filed in the office of the Register of Loudon County, Tennessee, as follows:

EASEMENTS AND RIGHTS OF WAY

<u>Tract</u>	<u>Grantor/Owner</u>	<u>Instrument</u>	<u>Recorded Date</u>	<u>Deed Book</u>	<u>Page</u>
TELCR-188	Ivan S. Worley, <u>et ux.</u>	Easement	2-20-76	123	303
TELCR-189	Dollie Irene Giles Pruett, <u>et al.</u>	Easement	5-7-76	124	231
TELCR-190	Alger F. Watkins, <u>et ux.</u>	Easement	4-22-76	124	43
TELCR-191	Edith Shubert	Easement	7-29-76	125	300
TELCR-196	Patricia Glass, <u>et vir</u>	Easement	9-2-76	125	724
TELCR-197	Ellis Goebel, <u>et ux.</u>	Easement	9-2-76	125	721
TELCR-198	Charles R. Cathcart, <u>et ux.</u>	Easement	11-20-76	126	665
TELCR-199	Freeman C. Kirkland, <u>et al.</u>	Easement	4-13-77	128	333
TELCR-205	Clyde W. Porter, <u>et ux.</u>	Easement	12-20-76	126	923
TELCR-206	Walter Wells, <u>et ux.</u>	Easement	12-3-76	126	757
TELCR-207	John H. Ramsey, <u>et ux.</u>	Declaration of Taking Judgment	5-13-77 9-14-77	128 130	748 403
TELCR-208	Clarence Freedman Allison, <u>et ux.</u>	Easement	3-25-77	128	59
TELCR-209	Freeman C. Kirkland, <u>et ux.</u>	Easement	1-25-77	127	368
TELCR-210	John A. Tuck, <u>et ux.</u>	Easement	3-25-77	128	63

TELLICO RESERVOIR  
FRONTAGE ROAD NORTH OF RELOCATED STATE HIGHWAY 72  
NEAR DAVIS SCHOOL ROAD  
PROJECT 65-3323

A strip of land of varying width lying on each side of the centerline of the Frontage Road North of Relocated State Highway 72 Near Davis School Road in the First Civil District of Loudon County, Tennessee, beginning at a point on the centerline identified as survey station 3 + 50, more or less, and extending to survey station 10 + 00, more or less, said point located at Tennessee State plane coordinate N. 480,178.86, E. 2,501,592.06, a distance of 650 feet, more or less; said strip containing 0.8 acre, more or less, as shown on a TVA drawing recorded in the office of the Register of Loudon County, Tennessee, as follows:

<u>Drawing</u>	<u>Cabinet <del>Plot Book</del></u>	<u>Slide <del>Page</del></u>	<u>Filing Date</u>
65HR5-3322R/W-1	B	102	9-2-83

The above-described easement and right of way being located over Fee land and upon easements and rights of way acquired by the United States of America as shown in instruments filed in the office of the Register of Loudon County, Tennessee, as follows:

Fee Tract

<u>Tract</u>	<u>Grantor</u>	<u>Instrument</u>	<u>Recorded Date</u>	<u>Deed Book</u>	<u>Page</u>
TELSR-40	Ivan S. Worley, <u>et ux.</u>	Deed	2-20-76	123	303

EASEMENTS AND RIGHTS OF WAY

<u>Tract</u>	<u>Grantor</u>	<u>Instrument</u>	<u>Recorded Date</u>	<u>Deed Book</u>	<u>Page</u>
TELCR-171	Alger F. Watkins, <u>et ux.</u>	Easement	5-9-75	120	272
TELCR-172	J. R. Watkins, <u>et ux.</u>	Easement	5-9-75	120	263

TELLICO RESERVOIR  
FRONTAGE ROAD SOUTH OF RELOCATED STATE HIGHWAY 72  
NEAR CORINTH ROAD  
PROJECT 65-3324

A strip of land of varying width lying on each side of the centerline of the Frontage Road South of Relocated State Highway 72 Near Corinth Road in the First Civil District of Loudon County, Tennessee, beginning at a point on the centerline of Side Road Right at survey station 8 + 36.03 and extending to a point where the centerline of Side Road Right intersects the centerline of project 65-3324 at survey station 0 + 00 of said project; thence following the centerline of project 65-3324 from survey station 0 + 00 and extending to survey station 8 + 50, a total distance of 1036.03 feet, more or less, as shown on a TVA drawing recorded in the office of the Register of Loudon County, Tennessee, as follows:

<u>Drawing</u>	<u>Cabinet Plat Book</u>	<u>Slide Page</u>	<u>Filing Date</u>
65HR5-3324R/W-1	B	102	9-2-83

The above-described easement and right of way being located upon easements and rights of way acquired by the United States of America as shown in instruments filed in the office of the Register of Loudon County, Tennessee, as follows:

EASEMENTS AND RIGHTS OF WAY

<u>Tract</u>	<u>Grantor/Owner</u>	<u>Instrument</u>	<u>Recorded Date</u>	<u>Deed Book</u>	<u>Page</u>
TELCR-174	Walter Galyon, et ux.	Declaration of Taking	9-5-75	121	535
		Judgment	5-7-76	124	218
TELCR-175	Hiwassee Land Company	Easement	1-5-76	122	703

TELLICO RESERVOIR  
WATKINS ROAD  
PROJECT 65-3391

A strip of land of varying width lying on each side of the centerline of Watkins Road in the First Civil District of Loudon County, Tennessee, beginning at a point on the centerline identified as survey station 2 + 70 and extending to survey station 15 + 48.6, a distance of 1278.6 feet; said strip containing 2.09 acres, more or less, as shown on a TVA drawing recorded in the office of the Register of Loudon County, Tennessee, as follows:

<u>Drawing</u>	<u>Cabinet Plat Book</u>	<u>Slide Page</u>	<u>Filing Date</u>
65HR5-3324R/W-1	B	102	9-2-83

The above-described easement and right of way being located upon an easement and right of way acquired by the United States of America as shown in an instrument filed in the office of the Register of Loudon County, Tennessee, as follows:

EASEMENT AND RIGHT OF WAY

<u>Tract</u>	<u>Grantor</u>	<u>Instrument</u>	<u>Recorded Date</u>	<u>Deed Book</u>	<u>Page</u>
TELCR-181	Birdie Presley, et al.	Easement	2-18-76	123	272

The above-described easements and rights of way are granted and conveyed subject to outstanding rights in Grantor, acting by and through the

Tennessee Valley Authority, and in third parties for road and utility easements, and to rights for private access to the highway by abutting property owners as specified in the various instruments listed herein. The Grantor expressly reserves the right for itself and its assigns to locate or relocate and maintain future transmission lines and other facilities over or under the highway easements and rights of way herein granted and conveyed and further reserves the right to flood with the waters of Tellico Reservoir such portions of the lands covered by the easements and rights of way hereinabove granted and conveyed as will be flooded when said waters are at elevation 820.0 mean sea level at the dam.

STATE OF TENNESSEE, LOUDON COUNTY REGISTER'S OFFICE  
TWS INSTRUMENT RECEIVED AT 11:55 O'CLOCK A. M., OF THE 27 DAY OF Oct. 19 93  
DULY CERTIFIED AND REGISTERED IN SAID OFFICE IN deed BOOK NO. 209 PAGE 116  
AND NOTED IN BOOK NO. R PAGE 302 STATE TAX PAID \$ exempt  
Fee \$40.00 [Signature] REGISTER



TO HAVE AND TO HOLD the said easements and rights of way unto the Grantee and unto its successors and assigns forever.

IN WITNESS WHEREOF, the Tennessee Valley Authority, acting herein as legal agent of the United States of America, and being duly authorized so to do, has caused this instrument to be signed, sealed, attested, and delivered in the name of the United States of America by its duly authorized officers, and its corporate seal to be hereunto affixed on this the 1<sup>st</sup> day of August, 1983

ATTEST

UNITED STATES OF AMERICA  
By Tennessee Valley Authority  
Its Legal Agent



Helen S. Drummer Secretary By W. F. Willis General Manager

OGC

STATE OF TENNESSEE )  
                                  )SS  
COUNTY OF KNOX        )

On the 1<sup>st</sup> day of August, 1983, personally appeared before me W. F. Willis and Helen S. Drummer to me personally known, who being by me duly sworn, did say that they are General Manager and Assistant Secretary, respectively, of the TENNESSEE VALLEY AUTHORITY, a corporation; that the seal affixed to the foregoing instrument is the corporate seal of the Tennessee Valley Authority, and that said instrument was signed, sealed, and delivered in behalf of said corporation by authority of its Board of Directors and as legal agent for the UNITED STATES OF AMERICA; and said W. F. Willis and Helen S. Drummer acknowledged said instrument to be the free act and deed of the UNITED STATES OF AMERICA, as principal, and the Tennessee Valley Authority, as its agent.

WITNESS my hand and official seal at Knoxville, Tennessee, the day and year aforesaid.

My commission expires: 10/17/83 S. Arnette Underwood  
Notary Public



LOUDON COUNTY, TENNESSEE

TELLICO RESERVOIR

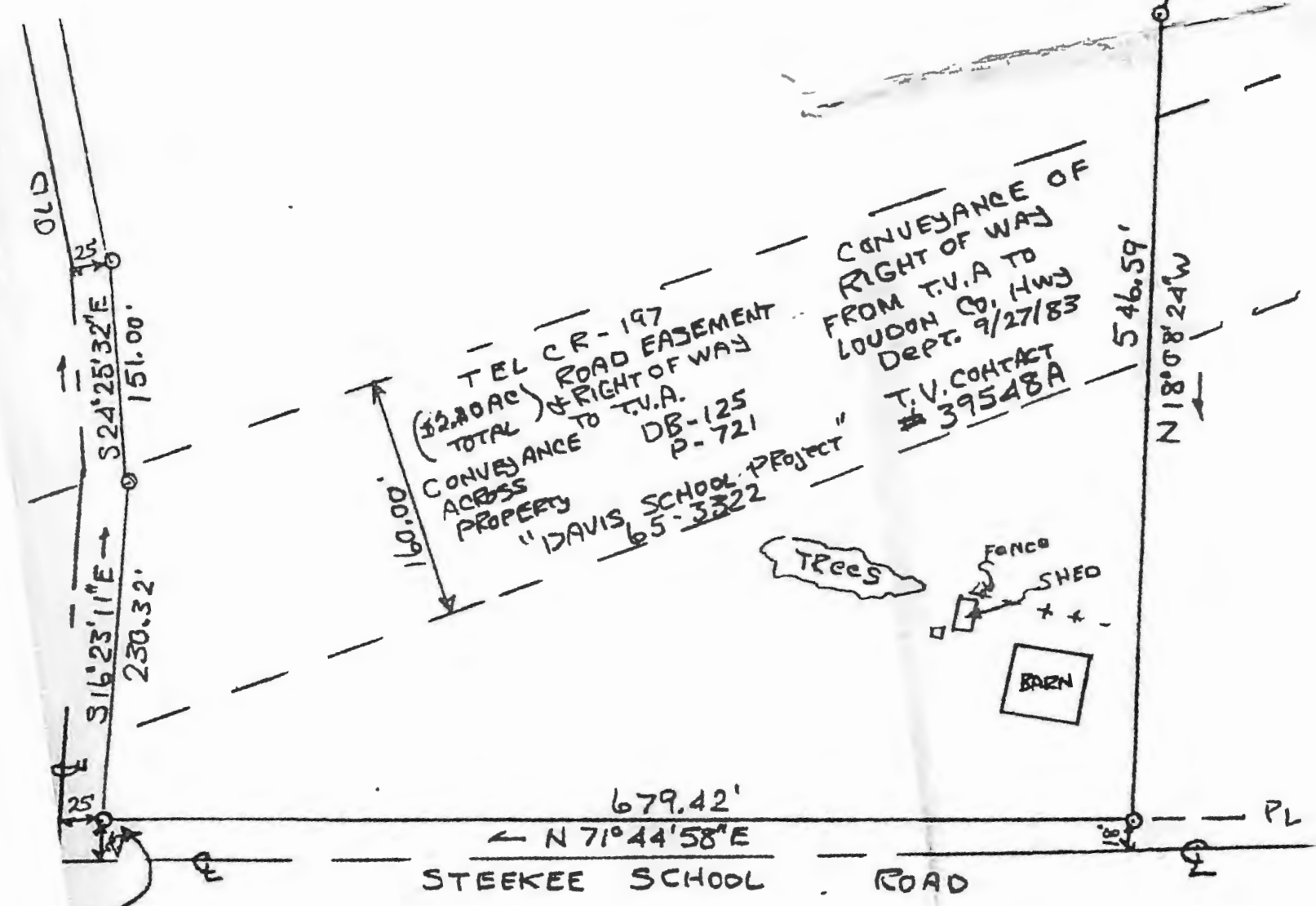
TRACTS AFFECTED BY HIGHWAY RIGHTS OF WAY  
 CONVEYED PURSUANT TO CONTRACT NO. TV-39548A

<u>Project</u>	<u>Easement Over Reservoir Tract</u>	<u>Right of Way Tract Conveyed</u>	<u>Acreage</u>
65-3216 County Road West Of Tennessee Highway 95	TELR-123		0.2
	TELR-140		0.5
	TELR-142		0.05
		TELCR-137	3.1
		TELCR-138	0.1
		TELCR-139	0.2
		TELCR-140	2.5
		TELCR-141	0.2
		TELCR-142	0.2
	65-3217 Sinking Creek Road	TELR-614	
TELR-615			1.2
TELR-616			3.0
		TELCR-146	1.7
		TELCR-147	1.3
		TELCR-148	1.7
		TELCR-149	7.2
		TELCR-150	0.7
		TELCR-151	0.4
		TELCR-204	1.0
65-3292 Blalock-Smith Road		TELCR-182	2.2
		TELCR-183	0.8
		TELCR-184	0.8
65-3322 Davis School Road		TELCR-188	2.3
		TELCR-189	1.6
		TELCR-190	1.5
		TELCR-191	3.2
		TELCR-196	0.5
		TELCR-197	4.8
		TELCR-198	3.5
		TELCR-199	0.9
		TELCR-205	5.6
		TELCR-206	0.8
		TELCR-207	0.5
		TELCR-208	0.9
	TELCR-209	0.1	
	TELCR-210	0.4	

X52309.01

<u>Project</u>	<u>Easement Over Reservoir Tract</u>	<u>Right of Way Tract Conveyed</u>	<u>Acres</u>
65-3323		TELCR-171	0.1
Frontage Road North Of Relocated State Highway 72 Near Davis School Road		TELCR-172	0.7
65-3324		TELCR-174	
Frontage Road South Of Relocated State Highway 72 At Corinth Road		Parcel No. 1	0.4
		Parcel No. 2	0.1
		TELCR-175	1.4
65-3391		TELCR-181	2.09
Watkins Road			

PATRICIA GLASS - 11



TERMINATION OF  
RIGHT-OF-WAY  
SCHOOL ROAD &  
RIGHT-OF-WAY  
RE ROAD

EXHIBIT 3

SURVEYOR:  
HARRY E. FRASIER  
983 POINT HARBOUR  
LENOIR CITY, TN 37551  
PH. 1-865-986-1291  
01-015-400-011

PARCEL 202.01  
MCQUEEN  
DB329/PG388

ROAD

LOCATION M

S89°39'32"E  
712.79'

EXHIBIT 4

12.86+/- ACRES

A=140.80'  
R=575.51'  
CH=N21°02'51"E  
140.45'

N22°40'47"E  
71.35'

A=90.39'  
R=177.65'  
CH=N0°34'55"E  
89.42'

EED

WANDA

ROAD

330' TO STEEKE SCHOOL RD

LOU DON  
CONVEYED FROM TVA TO  
COUNTY

HOUSE

EASEMENT

ROAD

LOU DON  
TVA

COUNTY HWY DEPT 09/27/1983  
CONTRACT # 39548A

SHED

PARCEL 204  
BETHEL METHODIST CHURCH  
DB101/PG196

N20°50'33"W  
63.92'

735°44'  
567°48'20"W



GENERAL INFORMATION:

- 1) Iron rods at all corners unless otherwise
- 2) Data relative to existing utilities should be relied upon without verification from the utility having jurisdiction.
- 3) This property is subject to any and all covenants, conditions, planning commission right-of-ways and all easements, if any, properly

Loudon County Board of Education  
 General Purpose School Fund 141  
 Fiscal Year Ending June 30, 2018

	A	B	C	D	E	F	G	H	I	J
1	<b>BUDGET AMENDMENTS</b>									
2	General Fund 141									
3	Account Number		9/18/2017 11:02	2017-2018	2017-2018	Approved	Proposed	Proposed		
4				Original Budget	Amendments	Amended Budget	Amendments	Amended Budget		
5										
6	General Purpose School Revenue									
7										
8	40000	Local Taxes								
9										
10	40100	<u>County Property Taxes</u>								
11		40110	Current Property Tax	9,687,670	0	9,687,670	0	9,687,670		
12		40120	Trustee's Collections Prior Year	205,000	0	205,000	0	205,000		
13										
14		Total County Property Taxes		9,892,670	0	9,892,670	0	9,892,670		
15										
16		40125	Bankruptcy	3,000	0	3,000	0	3,000		
17										
18				3,000	0	3,000	0	3,000		
19										
20	40100	<u>County Property Taxes</u>								
21		40130	Clerk and Master's Collections Prior Year	135,000	0	135,000	0	135,000		
22		40140	Interest and Penalty	35,000	0	35,000	0	35,000		
23		40163-TATE	Payments in-Lieu of Taxes - Tate & Lyle	324,645	0	324,645	0	324,645		
24										
25		Total County Property Taxes		494,645	0	494,645	0	494,645		
26										
27	40200	<u>County Local Option Taxes</u>								
28		40210	Local Option Sales Tax	3,150,000	0	3,150,000	0	3,150,000		
29		40275	Mixed Drink Tax	4,500	0	4,500	0	4,500		
30										
31		Total County Local Option Taxes		3,154,500	0	3,154,500	0	3,154,500		
32										
33	40300	<u>Statutory Local Taxes</u>								
34		40320	Bank Excise Tax	5,000	0	5,000	0	5,000		
35		40350	Interstate Telecommunications Tax	2,300	0	2,300	0	2,300		
36										
37		Total Statutory Local Taxes		7,300	0	7,300	0	7,300		
38										
39	Total Local Taxes			13,552,115	0	13,552,115	0	13,552,115		
40										

Loudon County Board of Education  
 General Purpose School Fund 141  
 Fiscal Year Ending June 30, 2018

	A	B	C	D	E	F	G	H	I	J
1	<b>BUDGET AMENDMENTS</b>									
2	General Fund 141									
3	9/18/2017 11:02									
4	Account Number			2017-2018	2017-2018	Approved	Proposed	Proposed		
41	41000		Licenses and Permits	Original Budget	Amendments	Amended Budget	Amendments	Amended Budget		
42										
43	<del>41100</del>		<u>Licenses</u>							
44		41110	Marriage Licenses	1,199	0	1,199	0	1,199		
45		41140	Cable TV Franchises	0	0	0	0	0		
46										
47			Total Licenses	1,199	0	1,199	0	1,199		
48										
49			Total Licenses and Permits	1,199	0	1,199	0	1,199		
50										
51										
52	43000		Charges for Current Services							
53										
54	<del>43500</del>		<u>Education Charges</u>							
55		43542	Contract for Instructional Services with Other LEA's	0	0	0	0	0		
56		43570	Receipts from Individual Schools	0	0	0	0	0		
57		43581	Community Service Fees-Children	0	0	0	0	0		
58		43583	TBI Criminal Background Fee	0	0	0	0	0		
59										
60			Total Education Charges	0	0	0	0	0		
61										
62										
63			Total Charges for Current Services	0	0	0	0	0		
64										
65	44000		Other Local Revenues							
66										
67	<del>44100</del>		<u>Recurring Items</u>							
68		44110	Investment Income	14,000	0	14,000	0	14,000		
69		44130	Sale of Material and Supplies	0	0	0	0	0		
70		44145	Sale of Recycled Materials	0	0	0	0	0		
71		44146	E-Rate Funding	0	0	0	0	0		
72		44160-RET-DEN	Retirees' Insurance Payments	46,000	0	46,000	0	46,000		
73		44160-RET-LIF	Retirees' Insurance Payments	7,200	0	7,200	0	7,200		
74		44160-RET-VIS	Retirees' Insurance Payments	4,500	0	4,500	0	4,500		
75		44161-COBRA-DEN	Cobra Insurance Payments	0	0	0	0	0		
76		44170	Miscellaneous Refunds	2,000	0	2,000	0	2,000		
77		44170-ATT	Miscellaneous Refunds	0	0	0	0	0		
78		44170-TNRMT	Miscellaneous Refunds - TN Risk Management	0	0	0	0	0		
79										
80			Total Recurring Items	73,700	0	73,700	0	73,700		
81										
82	44500		<u>Nonrecurring Items</u>							
83		44530	Sale of Equipment	0	0	0	0	0		
84		44570-CSH	Contributions and Gifts	0	0	0	0	0		
85										
86			Total Nonrecurring Items	0	0	0	0	0		
87										
88			Total Other Local Revenues	73,700	0	73,700	0	73,700		
89										

Loudon County Board of Education  
 General Purpose School Fund 141  
 Fiscal Year Ending June 30, 2018

	A	B	C	D	E	F	G	H	I	J
1	<b>BUDGET AMENDMENTS</b>									
2	<b>General Fund 141</b>									
3	9/18/2017 11:02									
4	Account Number			2017-2018 Original Budget	2017-2018 Amendments	Approved Amended Budget	Proposed Amendments	Proposed Amended Budget		
90	46000		State of Tennessee							
91										
92	46500		<u>State Education Funds</u>							
93	46511		Basic Education Program	20,802,000	0	20,802,000	106,000	20,908,000		LCBOE: Updated Final BEP allocation.
94	46515		Early Childhood Education	805,419	0	805,419	0	805,419		LCBOE: Updated LEAPs allocation.
95	46520		School Food Service	0	0	0	0	0		
96	46550		Driver Education	0	0	0	0	0		
97	46590		Other State Education Funds	58,467	0	58,467	0	58,467		LCBOE: Changing revenue code to 141-46594.
98	46590-LEAP		Other State Education Funds - LEAPS Grant	232,000	0	232,000	75,125	307,125		
99	46590-FRC		Family Resource Center	29,611	0	29,611	(29,611)	0		
100	46590-IC		Internet Connectivity	0	0	0	0	0		LCBOE: Safe Schools Grant.
101	46590-READ		Read to Be Ready	0	0	0	0	0		
102	46590-READLES		Read to Be Ready	0	0	0	0	0		
103	46590-SAFE		Safe Schools	0	0	0	21,320	21,320		LCBOE: Vocational Rehab grant. Expenses moved to 71200.
104	46590-SIC		Student Industry Certifications	0	0	0	0	0		
105	46590-VR		Vocational Rehabilitation Services	0	0	0	109,937	109,937		
106	46591		Coordinated School Health	160,000	0	160,000	0	160,000		LCBOE: Internet Connectivity state funds.
107	46592		Internet Connectivity	0	0	0	12,500	12,500		
108	46594		Family Resource Center	0	0	0	29,612	29,612		
109	46610		Career Ladder Program	108,000	0	108,000	0	108,000		LCBOE: CTE Equipment Grant. Expenses in 71300.
110	46640		Vocational Equipment	0	0	0	125,000	125,000		
111										
112			Total State Education Funds	22,195,497	0	22,195,497	449,883	22,645,380		
113										
114	46800		<u>Other State Revenues</u>							
115	46840		Alcoholic Beverage Tax	0	0	0	0	0		
116	46851		State Revenue Sharing-T.V.A.	1,100,000	0	1,100,000	0	1,100,000		
117										
118			Total Other State Revenues	1,100,000	0	1,100,000	0	1,100,000		
119										
120			Total State of Tennessee	23,295,497	0	23,295,497	449,883	23,745,380		



Loudon County Board of Education  
 General Purpose School Fund 141  
 Fiscal Year Ending June 30, 2018

	A	B	C	D	E	F	G	H	I	J
1	<b>BUDGET AMENDMENTS</b>									
2	<b>General Fund 141</b>									
3	Account Number		9/18/2017 11:02	2017-2018	2017-2018	Approved	Proposed	Proposed		
4				Original Budget	Amendments	Amended Budget	Amendments	Amended Budget		
121										
122	46980-READ	Other State Grants		0	0	0	10,000	10,000		LCBOE: READ Grant. Expenses in 71100.
123	46981	Safe Schools		0	0	0	0	0		
124	46990	Other State Revenue		0	0	0	0	0		
125										
126		<b>Total</b>		<b>0</b>	<b>0</b>	<b>0</b>	<b>10,000</b>	<b>10,000</b>		
127										
128	47000	<b>Federal Government</b>								
129										
130	47100	<i>Federal Through State</i>								
131	47111	USDA School Lunch Program		0	0	0	0	0		
132	47113	Breakfast		0	0	0	0	0		
133	47114	USDA-Other		0	0	0	0	0		
134	47143	Special Education - Grants to States		0	0	0	0	0		
135	47145	Special Education - Preschool High Cost		0	0	0	0	0		
136	47147	Safe and Drug-Free Schools State Grant (Title IV)		133,000	0	133,000	0	133,000		
137	47590-SNAP	Other Federal Through State SNAP Grant		0	0	0	0	0		
138										
139		<b>Total Federal Through State</b>		<b>133,000</b>	<b>0</b>	<b>133,000</b>	<b>0</b>	<b>133,000</b>		
140										
141	47600	<i>Direct Federal Revenue</i>								
142	47640	ROTC Reimbursement		66,000	0	66,000	0	66,000		
143										
144		<b>Total Direct Federal Revenue</b>		<b>66,000</b>	<b>0</b>	<b>66,000</b>	<b>0</b>	<b>66,000</b>		
145										
146		<b>Total Federal Government</b>		<b>199,000</b>	<b>0</b>	<b>199,000</b>	<b>0</b>	<b>199,000</b>		
147										

Loudon County Board of Education  
 General Purpose School Fund 141  
 Fiscal Year Ending June 30, 2018

	A	B	C	D	E	F	G	H	I	J
1	<b>BUDGET AMENDMENTS</b>									
2	General Fund 141									
3	9/18/2017 11:02									
4	Account Number			2017-2018	2017-2018	Approved	Proposed	Proposed		
				Original Budget	Amendments	Amended Budget	Amendments	Amended Budget		
148	48600		Citizens Groups							
149										
150										
151		48610	Donations	0	0	0	2,150	2,150		LCBOE: Instructional Supplies donation.
152		48610-ALT	Donations - Alternative School	0	0	0	2,000	2,000		
153		48610-BIT	Donations - Bridges in Transition	0	0	0	0	0		LCBOE: Alternative School.
154		48610-CAMP	Donations - Camp Bravado	0	0	0	0	0		
155		48610-CHR	Donations - Christmas	0	0	0	0	0		
156		48610-CL	Donations - CL	0	0	0	0	0		LCBOE: Donation for disadvantaged families.
157		48610-FAM	Donations - FAM	0	0	0	5,250	5,250		
158		48610-FRC	Donations - FRC	0	0	0	0	0		
159		48610-LCAP	Donations - LCA	0	0	0	0	0		LCBOE: Music donation.
160		48610-LCEF	Donations - LCEF	0	0	0	0	0		
161		48610-MUSIC	Donations - MUSIC	0	0	0	638	638		
162		48610-NMS	Donations - North Middle School	0	0	0	5,250	5,250		LCBOE: Robotics donation.
163		48610-RTI	Donations - RTI	0	0	0	0	0		
164		48610-SHOE	Donations - SHOE	0	0	0	0	0		
165		48610-SUP	Donations - SUP	0	0	0	0	0		
166		48610-WSF	Donations - WSF	0	0	0	0	0		
167										
168										
169			Total Citizens Groups	0	0	0	15,288	15,288		
170										
171	48990		Other							
172										
173		48990	Other	0	0	0	0	0		LCBOE: FLMS Insurance check. Expenses moved to 72620-335-INS
174		49700-INS	Insurance Recovery	0	0	0	6,739	6,739		
175		49800	Transfer In	0	0	0	0	0		
176										
177										
178			<b>Total Revenues</b>	<b>37,121,511</b>	<b>0</b>	<b>37,121,511</b>	<b>481,910</b>	<b>37,603,421</b>		
179										
180			<b>Total Other Source</b>	<b>0</b>	<b>0</b>	<b>0</b>	<b>0</b>	<b>0</b>		
181										
182										
183			<b>Total General Purpose School</b>	<b>37,121,511</b>	<b>0</b>	<b>37,121,511</b>	<b>481,910</b>	<b>37,603,421</b>		
184										
185										
186										

Loudon County Board of Education  
 General Purpose School Fund 141  
 Fiscal Year Ending June 30, 2018

	A	B	C	D	E	F	G	H	I	J
1	<b>BUDGET AMENDMENTS</b>									
2	General Fund 141									
3	Account Number		9/18/2017 11:02	2017-2018	2017-2018	Approved	Proposed	Proposed		
4				Original Budget	Amendments	Amended Budget	Amendments	Amended Budget		
187	General Purpose School Expenditures									
188										
189	70000		Education							
190										
191	71000		Instruction							
192										
193	71100		Regular Instruction Program							
194	105-READ		Supervisor or Director - READ to be Ready	0	0	0	0	0		
195	116		Teachers	14,095,025	0	14,095,025	0	14,095,025		
196	116-READ		Teachers - READ to be Ready	0	0	0	0	0		
197	116-READLES		Teachers - READ to be Ready	0	0	0	0	0		
198	117		Career Ladder Program	65,000	0	65,000	0	65,000		
199	128		Homebound Teachers	14,000	0	14,000	0	14,000		
200	163		Educational Assistants	1,140,577	0	1,140,577	0	1,140,577		
201	189		Other Salaries & Wages	0	0	0	0	0		
202	189-READLES		Other Salaries & Wages - READ to be Ready	0	0	0	0	0		
203	189-SCORE		Other Salaries & Wages	0	0	0	0	0		LCBOE: READ Grant expenses.
204	189-TLN		Other Salaries & Wages	0	0	0	0	0		
205	195		Certified Substitute Teachers	45,600	0	45,600	0	45,600		
206	195-READ		Certified Substitute Teachers	0	0	0	280	280		
207	198		Non-Certified Substitute Teachers	128,914	0	128,914	0	128,914		
208	198-READ		Non-Certified Substitute Teachers	0	0	0	2,520	2,520		
209	201		Social Security	960,990	0	960,990	0	960,990		
210	201-READ		Social Security - READ to be Ready	0	0	0	174	174		
211	201-READLES		Social Security - READ to be Ready	0	0	0	0	0		
212	201-SCORE		Social Security	0	0	0	0	0		
213	201-TLN		Social Security	0	0	0	0	0		
214	204		State Retirement	1,400,777	0	1,400,777	0	1,400,777		
215	204-READ		State Retirement - READ to be Ready	0	0	0	0	0		
216	204-READLES		State Retirement - READ to be Ready	0	0	0	0	0		
217	204-SCORE		State Retirement	0	0	0	0	0		
218	204-TLN		State Retirement	0	0	0	0	0		
219	205-RET-VIS		Employee and Dependent Insurance	2,803	0	2,803	0	2,803		
220	206		Life Insurance	56,942	0	56,942	0	56,942		
221	206-RET-LIF		Life Insurance	14,700	0	14,700	0	14,700		
222	207		Medical Insurance	2,471,070	0	2,471,070	0	2,471,070		
223	207-RET-MED		Medical Insurance	52,828	0	52,828	0	52,828		
224	208		Dental Insurance	127,942	0	127,942	0	127,942		
225	208-COBRA-DEN		Dental Insurance	0	0	0	0	0		
226	208-RET-DEN		Dental Insurance	30,300	0	30,300	0	30,300		
227	210		Unemployment Compensation	35,752	0	35,752	0	35,752		
228	210-FY15		Unemployment Compensation	0	0	0	0	0		
229	212		Employer Medicare	224,748	0	224,748	0	224,748		
230	212-READ		Employer Medicare - READ to be Ready	0	0	0	41	41		
231	212-READLES		Employer Medicare - READ to be Ready	0	0	0	0	0		
232	212-SCORE		Employer Medicare	0	0	0	0	0		
233	212-TLN		Employer Medicare	0	0	0	0	0		

Loudon County Board of Education  
 General Purpose School Fund 141  
 Fiscal Year Ending June 30, 2018

	A	B	C	D	E	F	G	H	I	J
1	<b>BUDGET AMENDMENTS</b>									
2	General Fund 141									
3	9/18/2017 11:02									
4	Account Number			2017-2018	2017-2018	Approved	Proposed	Proposed		
				Original Budget	Amendments	Amended Budget	Amendments	Amended Budget		
234	348	Postage		0	0	0	0	0		
235	355	Travel		5,000	0	5,000	0	5,000		
236	399	Other Contracted Services		70,000	0	70,000	0	70,000		
237	429	Instructional Supplies		118,000	0	118,000	2,150	120,150		
238	429-EES	Instructional Supplies - Eaton Elementary School		48,197	0	48,197	0	48,197		
239	429-FLM	Instructional Supplies - Fort Loudoun Middle School		22,073	0	22,073	0	22,073		
240	429-GBS	Instructional Supplies - Greenback School		33,196	0	33,196	0	33,196		
241	429-HPS	Instructional Supplies - Highland Park Elementary School		25,832	0	25,832	0	25,832		
242	429-LES	Instructional Supplies - Loudon Elementary School		30,295	0	30,295	0	30,295		
243	429-LHS	Instructional Supplies - Loudon High School		46,040	0	46,040	0	46,040		
244	429-NMS	Instructional Supplies - North Middle School		42,256	0	42,256	0	42,256		
245	429-PES	Instructional Supplies - Philadelphia Elementary School		32,382	0	32,382	0	32,382		
246	429-READ	Instructional Supplies - Read to be Ready		0	0	0	6,985	6,985		
247	429-READLES	Instructional Supplies - Read to be Ready		0	0	0	0	0		
248	429-READPES	Instructional Supplies - Read to be Ready		0	0	0	0	0		
249	429-RTI	Instructional Supplies - RTI		0	0	0	0	0		
250	429-SCORE	Instructional Supplies - SCORE		0	0	0	0	0		
251	429-SES	Instructional Supplies - Steekee Elementary School		14,735	0	14,735	0	14,735		
252	449	Textbooks		50,000	0	50,000	0	50,000		
253	524	In-Service Staff Development		2,000	0	2,000	0	2,000		
254	599	Other Charges		0	0	0	0	0		
255	599-READ	Other Charges - READ to be Ready		0	0	0	0	0		
256	599-READLES	Other Charges - READ to be Ready		0	0	0	0	0		
257	790	Other Equipment		221,314	0	221,314	85,503	306,817		
258	790-EES	Other Equipment - Eaton Elementary School		7,000	0	7,000	0	7,000		
259	790-FLM	Other Equipment - Fort Loudoun Middle School		7,500	0	7,500	0	7,500		
260	790-GBS	Other Equipment - Greenback School		13,000	0	13,000	0	13,000		
261	790-HPS	Other Equipment - Highland Park Elementary School		7,000	0	7,000	0	7,000		
262	790-LES	Other Equipment - Loudon Elementary School		5,000	0	5,000	0	5,000		
263	790-LHS	Other Equipment - Loudon High School		17,000	0	17,000	0	17,000		
264	790-NMS	Other Equipment - North Middle School		25,800	0	25,800	4,000	29,800		
265	790-PES	Other Equipment - Philadelphia Elementary School		15,000	0	15,000	0	15,000		
266	790-SES	Other Equipment - Steekee Elementary School		5,329	0	5,329	0	5,329		
267										
268		<b>Total Regular Instruction Program</b>		<b>21,731,917</b>	<b>0</b>	<b>21,731,917</b>	<b>101,653</b>	<b>21,833,570</b>		
269										
270	711.50	<i>Alternative Instruction Program</i>								
271	499	Other Supplies & Materials		0	0	0	300	300		
272	790	Other Equipment		0	0	0	1,700	1,700		
273										
274		<b>Total Regular Instruction Program</b>		<b>0</b>	<b>0</b>	<b>0</b>	<b>2,000</b>	<b>2,000</b>		
275										
276										

LCBOE:  
Expenses from donation.

LCBOE:  
ENA erate refund.  
Pulling from fund  
balance.

LCBOE:  
Moved from NMS library  
line.

LCBOE:  
Expenses from donation.

Loudon County Board of Education  
 General Purpose School Fund 141  
 Fiscal Year Ending June 30, 2018

1	A	B	C	D	E	F	G	H	I	J
2	<b>BUDGET AMENDMENTS</b>									
3			General Fund 141							
3	Account Number		9/18/2017 11:02	2017-2018	2017-2018	Approved	Proposed	Proposed		
4				Original Budget	Amendments	Amended Budget	Amendments	Amended Budget		
277	71200		<i>Special Education Program</i>							
278		116	Teachers	1,418,843	0	1,418,843	0	1,418,843		
279		116-VR	Teachers	0	0	0	46,850	46,850		LCBOE: VR Grant expenses.
280		117	Career Ladder Program	4,000	0	4,000	0	4,000		
281		128	Homebound Teachers	23,000	0	23,000	0	23,000		
282		163	Educational Assistants	316,000	0	316,000	0	316,000		
283		163-VR	Educational Assistants	0	0	0	40,000	40,000		
284		171	Speech Pathologist	167,000	0	167,000	0	167,000		
285		189	Other Salaries & Wages	40,000	0	40,000	0	40,000		
286		195	Certified Substitute Teachers	5,000	0	5,000	0	5,000		
287		198	Non-Certified Substitute Teachers	26,000	0	26,000	0	26,000		
288		201	Social Security	124,960	0	124,960	0	124,960		
289		201-VR	Social Security	0	0	0	5,385	5,385		
290		204	State Retirement	181,751	0	181,751	0	181,751		
291		204-VR	State Retirement	0	0	0	3,500	3,500		
292		205-RET-VIS	Employee and Dependent Insurance	660	0	660	0	660		
293		206	Life Insurance	8,418	0	8,418	0	8,418		
294		206-RET-LIF	Life Insurance	1,511	0	1,511	0	1,511		
295		206-VR	Life Insurance	0	0	0	263	263		
296		207	Medical Insurance	346,884	0	346,884	0	346,884		
297		207-RET-MED	Medical Insurance	3,750	0	3,750	0	3,750		
298		207-VR	Medical Insurance	0	0	0	12,072	12,072		
299		208	Dental Insurance	17,000	0	17,000	0	17,000		
300		208-RET-DEN	Dental Insurance	4,300	0	4,300	0	4,300		
301		208-VR	Dental Insurance	0	0	0	607	607		
302		212	Employer Medicare	29,225	0	29,225	0	29,225		
303		212-VR	Employer Medicare	0	0	0	1,260	1,260		
304		355-VR	Travel	0	0	0	0	0		
305		399	Other Contracted Services	145,603	0	145,603	0	145,603		
306		429	Instructional Supplies	81,752	0	81,752	0	81,752		
307		725	Special Education Equipment	103,500	0	103,500	0	103,500		
308										
309			<b>Total Special Instruction Program</b>	<b>3,049,157</b>	<b>0</b>	<b>3,049,157</b>	<b>109,937</b>	<b>3,159,094</b>		
310										

**Loudon County Board of Education  
General Purpose School Fund 141  
Fiscal Year Ending June 30, 2018**

	A	B	C	D	E	F	G	H	I	J
1	<b>BUDGET AMENDMENTS</b>									
2	<b>General Fund 141</b>									
3	<b>9/18/2017 11:02</b>									
4	<b>Account Number</b>			<b>2017-2018</b>	<b>2017-2018</b>	<b>Approved</b>	<b>Proposed</b>	<b>Proposed</b>		
				<b>Original Budget</b>	<b>Amendments</b>	<b>Amended Budget</b>	<b>Amendments</b>	<b>Amended Budget</b>		
311	71300		<i>Vocational Education Program</i>							
312	116		Teachers	702,300	0	702,300	0		702,300	
313	117		Career Ladder Program	6,000	0	6,000	0		6,000	
314	163		Educational Assistants	20,404	0	20,404	0		20,404	
315	195		Certified Substitute Teachers	5,700	0	5,700	0		5,700	
316	198		Non-Certified Substitute Teachers	10,000	0	10,000	0		10,000	
317	201		Social Security	46,154	0	46,154	0		46,154	
318	204		State Retirement	66,332	0	66,332	0		66,332	
319	205-RET-VIS		Employee and Dependent Insurance	173	0	173	0		173	
320	206		Life Insurance	2,550	0	2,550	0		2,550	
321	206-RET-LIF		Life Insurance	400	0	400	0		400	
322	207		Medical Insurance	137,150	0	137,150	0		137,150	
323	208		Dental Insurance	5,400	0	5,400	0		5,400	
324	208-RET-DEN		Dental Insurance	810	0	810	0		810	
325	212		Employer Medicare	10,794	0	10,794	0		10,794	
326	336		Maintenance and Repair Services-Equipment	6,300	0	6,300	0		6,300	
327	355		Travel	4,000	0	4,000	0		4,000	
328	399		Other Contracted Services	0	0	0	500		500	
329	425		Gasoline	700	0	700	0		700	
330	429		Instructional Supplies	75,386	0	75,386	(500)		74,886	
331	790		Other Equipment	60,000	0	60,000	0		60,000	
332	790-CTE		Other Equipment	0	0	0	125,000		125,000	
333										
334			<b>Total Vocational Education Program</b>	<b>1,160,553</b>	<b>0</b>	<b>1,160,553</b>	<b>125,000</b>		<b>1,285,553</b>	
335										
336			<b>Total Instruction</b>	<b>25,941,627</b>	<b>0</b>	<b>25,941,627</b>	<b>338,590</b>		<b>26,280,217</b>	

LCBOE:  
Increased contracted  
services - decreased  
instructional supplies.

LCBOE:  
CTE Equipment Grant  
expenses.

Loudon County Board of Education  
 General Purpose School Fund 141  
 Fiscal Year Ending June 30, 2018

	A	B	C	D	E	F	G	H	I	J
1	<b>BUDGET AMENDMENTS</b>									
2	General Fund 141									
3	Account Number		9/18/2017 11:02	2017-2018	2017-2018	Approved	Proposed	Proposed		
4				Original Budget	Amendments	Amended Budget	Amendments	Amended Budget		
337										
338	72000		Support Services							
339										
340	72120		Health Services							
341	105-CSH		Supervisor/Director	51,226	0	51,226	(0,119)	45,107		
342	131		Medical Personnel	243,500	0	243,500	0	243,500		
343	189-CSH		Other Salaries & Wages	64,693	0	64,693	(22,448)	42,245		
344	201		Social Security	15,097	0	15,097	0	15,097		
345	201-CSH		Social Security	7,236	0	7,236	(1,820)	5,416		
346	204		State Retirement	24,083	0	24,083	0	24,083		
347	204-CSH		State Retirement	6,929	0	6,929	(2,468)	4,461		
348	205-RET-VIS		Employee and Dependent Insurance	102	0	102	0	102		
349	206		Life Insurance	1,635	0	1,635	0	1,635		
350	206-CSH		Life Insurance	354	0	354	(194)	160		
351	206-RET-LIF		Life Insurance	325	0	325	0	325		
352	207		Medical Insurance	44,000	0	44,000	0	44,000		
353	207-CSH		Medical Insurance	11,211	0	11,211	(4,031)	7,180		
354	208		Dental Insurance	2,400	0	2,400	0	2,400		
355	208-CSH		Dental Insurance	377	0	377	(30)	347		
356	208-RET-DEN		Dental Insurance	432	0	432	0	432		
357	212		Employer Medicare	3,531	0	3,531	0	3,531		
358	212-CSH		Employer Medicare	1,692	0	1,692	(425)	1,267		
359	355		Travel	400	0	400	0	400		
360	355-CSH		Travel	1,800	0	1,800	2,700	4,500		
361	399		Other Contracted Services	9,100	0	9,100	0	9,100		
362	399-CSH		Other Contracted Services	500	0	500	4,000	4,500		
363	413		Drugs and Medical Supplies	4,900	0	4,900	0	4,900		
364	435		Office Supplies	1,000	0	1,000	0	1,000		
365	499-CSH		Other Supplies & Materials	7,193	0	7,193	17,700	24,893		
366	524		In-Service/Staff Development	600	0	600	0	600		
367	524-CSH		In-Service/Staff Development	6,789	0	6,789	5,211	12,000		
368	735-CSH		Health Equipment	0	0	0	7,924	7,924		
369										
370			<b>Total Health Services</b>	<b>511,105</b>	<b>0</b>	<b>511,105</b>	<b>0</b>	<b>511,105</b>		

LCBOE:  
 CSH amendments to  
 match state budget.

Loudon County Board of Education  
 General Purpose School Fund 141  
 Fiscal Year Ending June 30, 2018

1	A	B	C	D	E	F	G	H	I	J
2	<b>BUDGET AMENDMENTS</b>									
3	General Fund 141									
4	9/18/2017 11:02									
5	Account Number			2017-2018	2017-2018	Approved	Proposed	Proposed		
6				Original Budget	Amendments	Amended Budget	Amendments	Amended Budget		
371										
372	72130		<i>Other Student Support</i>							
373		117	Career Ladder Program	3,000	0	3,000	0		3,000	
374		123	Guidance Personnel	637,510	0	637,510	0		637,510	
375		162	Clerical Personnel	185,775	0	185,775	0		185,775	
376		189-FRC	Other Salaries & Wages	25,192	0	25,192	(25,192)		0	
377		201	Social Security	51,292	0	51,292	0		51,292	
378		201-FRC	Social Security	1,561	0	1,561	(1,561)		0	
379		204	State Retirement	76,623	0	76,623	0		76,623	
380		204-FRC	State Retirement	2,492	0	2,492	(2,492)		0	
381		205-RET-VIS	Employee and Dependent Insurance	102	0	102	0		102	
382		206	Life Insurance	3,351	0	3,351	0		3,351	
383		206-RET-LIF	Life Insurance	480	0	480	0		480	
384		207	Medical Insurance	143,500	0	143,500	0		143,500	
385		207-RET-MED	Medical Insurance	0	0	0	0		0	
386		208	Dental Insurance	6,200	0	6,200	0		6,200	
387		208-RET-DEN	Dental Insurance	432	0	432	0		432	
388		212	Employer Medicare	11,996	0	11,996	0		11,996	
389		212-FRC	Employer Medicare	366	0	366	(366)		0	
390		322	Evaluation and Testing	20,000	0	20,000	0		20,000	
391		355	Travel	500	0	500	0		500	
392		524	In Service/Staff Development	4,500	0	4,500	0		4,500	
393		790-SAFE	Other Equipment	0	0	0	21,320		21,320	
394										
395			<b>Total Other Student Support</b>	<b>1,174,872</b>	<b>0</b>	<b>1,174,872</b>	<b>(8,291)</b>		<b>1,166,581</b>	
396										

LCBOE:  
Moving funds to 73300  
per state.

LCBOE:  
Safe Schools grant  
expenses.



Loudon County Board of Education  
 General Purpose School Fund 141  
 Fiscal Year Ending June 30, 2018

	A	B	C	D	E	F	G	H	I	J
1	<b>BUDGET AMENDMENTS</b>									
2	General Fund 141									
3	Account Number 9/18/2017 11:02			2017-2018	2017-2018	Approved	Proposed	Proposed		
4				Original Budget	Amendments	Amended Budget	Amendments	Amended Budget		
397	72210		<i>Regular Instruction Program</i>							
398	105		Supervisor/Director	296,188	0	296,188	0		296,188	
399	117		Career Ladder Program	4,000	0	4,000	0		4,000	
400	129		Librarians	475,500	0	475,500	0		475,500	
401	161		Secretary (s)	283,400	0	283,400	0		283,400	
402	189-TLN		Other Salaries & Wages	0	0	0	0		0	
403	201		Social Security	65,665	0	65,665	0		65,665	
404	201-TLN		Social Security	0	0	0	0		0	
405	204		State Retirement	98,461	0	98,461	0		98,461	
406	204-TLN		State Retirement	0	0	0	0		0	
407	205-RET-VIS		Employee and Dependent Insurance	465	0	465	0		465	
408	206		Life Insurance	4,248	0	4,248	0		4,248	
409	206-RET-LIF		Life Insurance	1,790	0	1,790	0		1,790	
410	207		Medical Insurance	208,998	0	208,998	0		208,998	
411	207-RET-MED		Medical Insurance	5,000	0	5,000	0		5,000	
412	208		Dental Insurance	8,500	0	8,500	0		8,500	
413	208-REF-DEN		Dental Insurance	3,610	0	3,610	0		3,610	
414	212		Employer Medicare	15,360	0	15,360	0		15,360	
415	212-TLN		Employer Medicare	0	0	0	0		0	
416	355		Travel	17,000	0	17,000	0		17,000	
417	355-READ		Travel - READ to be Ready	0	0	0	0		0	
418	422-READ		Food Supplies - READ to be Ready	0	0	0	0		0	
419	422-READLES		Food Supplies - READ to be Ready	0	0	0	0		0	
420	432-EES		Library Books/Media - Eaton Elementary School	8,768	0	8,768	0		8,768	
421	432-FLM		Library Books/Media - Fort Loudoun Middle School	4,697	0	4,697	0		4,697	
422	432-GBS		Library Books/Media - Greenback School	8,448	0	8,448	0		8,448	
423	432-HPS		Library Books/Media - Highland Park Elementary School	4,659	0	4,659	0		4,659	
424	432-LES		Library Books/Media - Loudon Elementary School	5,606	0	5,606	0		5,606	
425	432-LHS		Library Books/Media - Loudon High School	9,536	0	9,536	0		9,536	
426	432-NMS		Library Books/Media - North Middle School	8,696	0	8,696	(4,545)		4,151	
427	432-PES		Library Books/Media - Philadelphia Elementary School	7,526	0	7,526	0		7,526	
428	432-SES		Library Books/Media - Steekee Elementary School	3,500	0	3,500	0		3,500	
429	524		In-Service/Staff Development	12,000	0	12,000	0		12,000	
430	524-EES		In-Service/Staff Development - Eaton Elementary School	5,500	0	5,500	0		5,500	
431	524-FLM		In-Service/Staff Development - Fort Loudoun Middle School	5,300	0	5,300	0		5,300	
432	524-GBS		In-Service/Staff Development - Greenback School	13,300	0	13,300	0		13,300	
433	524-HPS		In-Service/Staff Development - Highland Park Elem. School	4,900	0	4,900	0		4,900	
434	524-LES		In-Service/Staff Development - Loudon Elementary School	5,000	0	5,000	0		5,000	
435	524-LHS		In-Service/Staff Development - Loudon High School	6,100	0	6,100	0		6,100	
436	524-NMS		In-Service/Staff Development - North Middle School	6,750	0	6,750	545		7,295	
437	524-PES		In-Service/Staff Development - Philadelphia Elem. School	6,400	0	6,400	0		6,400	
438	524-READ		In-Service/Staff Development - READ to be Ready	0	0	0	0		0	
439	524-READLES		In-Service/Staff Development - READ to be Ready	0	0	0	0		0	
440	524-SES		In-Service/Staff Development - Steekee Elementary School	4,600	0	4,600	0		4,600	
441	599		Other Charges	0	0	0	0		0	
442	790		Other Equipment	0	0	0	0		0	
443										
444			<b>Total Regular Instruction Program</b>	<b>1,619,471</b>	<b>0</b>	<b>1,619,471</b>	<b>(4,000)</b>		<b>1,615,471</b>	
445										

LCBOE:  
 Moved to NMS  
 equipment & PD line.

Loudon County Board of Education  
 General Purpose School Fund 141  
 Fiscal Year Ending June 30, 2018

	A	B	C	D	E	F	G	H	I	J
1	<b>BUDGET AMENDMENTS</b>									
2	General Fund 141									
3	Account Number		9/18/2017 11:02	2017-2018	2017-2018	Approved	Proposed	Proposed		
4				Original Budget	Amendments	Amended Budget	Amendments	Amended Budget		
446										
447										
448	72220		<u>Special Education Program</u>							
449		105	Supervisor/Director	27,433	0	27,433	0	27,433		
450		117	Career Ladder Program	1,000	0	1,000	0	1,000		
451		124	Psychological Personnel	218,000	0	218,000	0	218,000		
452		171	Speech Pathologist	57,300	0	57,300	0	57,300		
453		201	Social Security	18,964	0	18,964	0	18,964		
454		204	State Retirement	27,773	0	27,773	0	27,773		
455		205-RET-VIS	Employee and Dependent Insurance	203	0	203	0	203		
456		206	Life Insurance	1,200	0	1,200	0	1,200		
457		206-RET-LIF	Life Insurance	385	0	385	0	385		
458		207	Medical Insurance	54,800	0	54,800	0	54,800		
459		207-RET-MED	Medical Insurance	3,900	0	3,900	0	3,900		
460		208	Dental Insurance	2,200	0	2,200	0	2,200		
461		208-REF-DEN	Dental Insurance	863	0	863	0	863		
462		212	Employer Medicare	4,435	0	4,435	0	4,435		
463		355	Travel	21,650	0	21,650	0	21,650		
464		399	Other Contracted Services	0	0	0	0	0		
465		524	In-Service/Staff Development	0	0	0	0	0		
466										
467			<b>Total Special Education Program</b>	<b>440,106</b>	<b>0</b>	<b>440,106</b>	<b>0</b>	<b>440,106</b>		
468										

Loudon County Board of Education  
 General Purpose School Fund 141  
 Fiscal Year Ending June 30, 2018

1	A	B	C	D	E	F	G	H	I	J
2	<b>BUDGET AMENDMENTS</b>									
3	General Fund 141									
4	9/18/2017 11:02									
	Account Number			2017-2018	2017-2018	Approved	Proposed	Proposed		
				Original Budget	Amendments	Amended Budget	Amendments	Amended Budget		
469	72230		<u>Vocational Education Program</u>							
470	105		Supervisor/Director	75,224	0	75,224	0	75,224		
471	162		Clerical Personnel	39,980	0	39,980	0	39,980		
472	201		Social Security	7,143	0	7,143	0	7,143		
473	204		State Retirement	10,785	0	10,785	0	10,785		
474	205-RET-VIS		Employee and Dependent Insurance	102	0	102	0	102		
475	206		Life Insurance	360	0	360	0	360		
476	206-RET-LIF		Life Insurance	200	0	200	0	200		
477	207		Medical Insurance	14,201	0	14,201	0	14,201		
478	207-RET-MED		Medical Insurance	0	0	0	0	0		
479	208		Dental Insurance	700	0	700	0	700		
480	208-REF-DEN		Dental Insurance	440	0	440	0	440		
481	212		Employer Medicare	1,671	0	1,671	0	1,671		
482	355		Travel	2,000	0	2,000	0	2,000		
483	524		In-Service/Staff Development	3,000	0	3,000	0	3,000		
484										
485			<b>Total Vocational Education Program</b>	<b>155,806</b>	<b>0</b>	<b>155,806</b>	<b>0</b>	<b>155,806</b>		
486										
487	72250		<u>Technology</u>							
488	105		Supervisor/Director	95,224	0	95,224	0	95,224		
489	117		Career Ladder Program	1,000	0	1,000	0	1,000		
490	120		Computer Programmer	192,836	0	192,836	0	192,836		
491	201		Social Security	17,922	0	17,922	0	17,922		
492	204		State Retirement	27,809	0	27,809	0	27,809		
493	206		Life Insurance	961	0	961	0	961		
494	207		Medical Insurance	55,080	0	55,080	0	55,080		
495	208		Dental Insurance	2,142	0	2,142	0	2,142		
496	212		Employer Medicare	4,192	0	4,192	0	4,192		
497	350		Internet Connectivity	65,000	0	65,000	12,500	77,500		
498	350-IC		Internet Connectivity	0	0	0	12,500	12,500		
499	355		Travel	5,400	0	5,400	0	5,400		
500	399		Other Contracted Services	12,000	0	12,000	0	12,000		
501	471		Software	170,000	0	170,000	0	170,000		
502	499		Other Supplies & Materials	4,000	0	4,000	0	4,000		
503	524		In Service/Staff Development	12,430	0	12,430	0	12,430		
504	790		Other Equipment	180,081	0	180,081	0	180,081		
505	790-NMS		Other Equipment	0	0	0	5,250	5,250		
506										
507			<b>Total Central &amp; Other Transportation</b>	<b>846,077</b>	<b>0</b>	<b>846,077</b>	<b>30,250</b>	<b>876,327</b>		
508										

LCBOE:  
 ENA erate refund.  
 Pulling from fund  
 balance.

LCBOE:  
 Internet Connectivity  
 expenses.

LCBOE:  
 Robotics donation  
 expenses.

**Loudon County Board of Education  
General Purpose School Fund 141  
Fiscal Year Ending June 30, 2018**

	A	B	C	D	E	F	G	H	I	J
1	<b>BUDGET AMENDMENTS</b>									
2	General Fund 141									
3	9/18/2017 11:02									
4	Account Number			2017-2018	2017-2018	Approved	Proposed	Proposed		
				Original Budget	Amendments	Amended Budget	Amendments	Amended Budget		
508	72310		<i>Board of Education</i>							
510	191		Board and Committee Members Fees	40,300	0	40,300	0	40,300		
511	201		Social Security	2,499	0	2,499	0	2,499		
512	204		State Retirement	1,800	0	1,800	0	1,800		
513	206		Life Insurance	1,480	0	1,480	0	1,480		
514	208		Dental Insurance	2,085	0	2,085	0	2,085		
515	212		Employer Medicare	585	0	585	0	585		
516	305		Audit Services	12,000	0	12,000	0	12,000		
517	331		Legal Services	15,000	0	15,000	0	15,000		
518	355		Travel	8,000	0	8,000	0	8,000		
519	506		Liability Insurance	28,578	0	28,578	0	28,578		
520	508		Premium on Corporate Surety Bonds	200	0	200	0	200		
521	509		Refunds	0	0	0	0	0		
522	510		Trustee's Commission	300,000	0	300,000	0	300,000		
523	513		Workman's Compensation Insurance	208,940	0	208,940	0	208,940		
524	524		In Service/Staff Development	25,000	0	25,000	0	25,000		
525	599		Other Charges	0	0	0	0	0		
526			<b>Total Board of Education</b>	<b>646,467</b>	<b>0</b>	<b>646,467</b>	<b>0</b>	<b>646,467</b>		
527										
528										

Loudon County Board of Education  
 General Purpose School Fund 141  
 Fiscal Year Ending June 30, 2018

	A	B	C	D	E	F	G	H	I	J
1	<b>BUDGET AMENDMENTS</b>									
2	General Fund 141									
3	Account Number		9/18/2017 11:02	2017-2018	2017-2018	Approved	Proposed	Proposed		
4				Original Budget	Amendments	Amended Budget	Amendments	Amended Budget		
529	72320		<i>Office of the Superintendent</i>							
530		101	County Official/Administrative Office	128,520	0	128,520	0	128,520		
531		117	Career Ladder Program	1,000	0	1,000	0	1,000		
532		161	Secretary (s)	44,345	0	44,345	0	44,345		
533		189	Other Salaries & Wages	7,200	0	7,200	0	7,200		
534		201	Social Security	11,227	0	11,227	0	11,227		
535		204	State Retirement	16,800	0	16,800	0	16,800		
536		205-RET-VIS	Employee and Dependent Insurance	102	0	102	0	102		
537		206	Life Insurance	500	0	500	0	500		
538		206-RET-LIF	Life Insurance	120	0	120	0	120		
539		207	Medical Insurance	18,940	0	18,940	0	18,940		
540		208	Dental Insurance	1,050	0	1,050	0	1,050		
541		208-REF-DEN	Dental Insurance	435	0	435	0	435		
542		212	Employer Medicare	2,626	0	2,626	0	2,626		
543		302	Advertising	1,000	0	1,000	0	1,000		
544		307	Communication	35,000	0	35,000	0	35,000		
545		320	Dues & Memberships	14,000	0	14,000	0	14,000		
546		348	Postal Charges	2,500	0	2,500	0	2,500		
547		355	Travel	2,800	0	2,800	0	2,800		
548		399	Other Contracted Services	45,000	0	45,000	0	45,000		
549		435	Office Supplies	8,000	0	8,000	0	8,000		
550		524	In Service/Staff Development	3,000	0	3,000	0	3,000		
551		599	Other Charges	3,500	0	3,500	0	3,500		
552										
553			<b>Total Office of the Superintendent</b>	<b>347,665</b>	<b>0</b>	<b>347,665</b>	<b>0</b>	<b>347,665</b>		
554										

Loudon County Board of Education  
 General Purpose School Fund 141  
 Fiscal Year Ending June 30, 2018

	A	B	C	D	E	F	G	H	I	J
1	<b>BUDGET AMENDMENTS</b>									
2	General Fund 141									
3	9/18/2017 11:02									
4	Account Number			2017-2018 Original Budget	2017-2018 Amendments	Approved Amended Budget	Proposed Amendments	Proposed Amended Budget		
555	72110		<i>Office of the Principal</i>							
556	104		Principals	786,925	0	786,925	0	786,925		
557	117		Career Ladder Program	5,500	0	5,500	0	5,500		
558	189-TLN		Other Salaries & Wages	0	0	0	0	0		
559	201		Social Security	49,162	0	49,162	0	49,162		
560	201-TLN		Social Security	0	0	0	0	0		
561	204		State Retirement	71,998	0	71,998	0	71,998		
562	204-TLN		State Retirement	0	0	0	0	0		
563	205-RET-VIS		Employee and Dependent Insurance	182	0	182	0	182		
564	206		Life Insurance	1,693	0	1,693	0	1,693		
565	206-RET-LIF		Life Insurance	2,000	0	2,000	0	2,000		
566	207		Medical Insurance	80,030	0	80,030	0	80,030		
567	207-RET-MED		Medical Insurance	4,350	0	4,350	0	4,350		
568	208		Dental Insurance	3,600	0	3,600	0	3,600		
569	208-REF-DEN		Dental Insurance	3,400	0	3,400	0	3,400		
570	212		Employer Medicare	11,500	0	11,500	0	11,500		
571	212-TLN		Employer Medicare	0	0	0	0	0		
572	307		Communication	82,903	0	82,903	0	82,903		
573	348		Postage	5,000	0	5,000	0	5,000		
574	355		Travel	10,000	0	10,000	0	10,000		
575	524		In Service/Staff Development	3,000	0	3,000	0	3,000		
576	599-MUSIC		Other Charges	0	0	0	40,478	40,478		
577	790-MUSIC		Other Equipment	0	0	0	33,426	33,426		
578										
579			<b>Total Office of the Principal</b>	<b>1,121,243</b>	<b>0</b>	<b>1,121,243</b>	<b>73,904</b>	<b>1,195,147</b>		
580										
581	72510		<i>Fiscal Services</i>							
582	119		Accountants/Bookkeepers	65,464	0	65,464	0	65,464		
583	201		Social Security	4,060	0	4,060	0	4,060		
584	204		State Retirement	6,475	0	6,475	0	6,475		
585	206		Life Insurance	184	0	184	0	184		
586	206-RET-LIF		Life Insurance	86	0	86	0	86		
587	207		Medical Insurance	7,780	0	7,780	0	7,780		
588	208		Dental Insurance	347	0	347	0	347		
589	212		Employer Medicare	954	0	954	0	954		
590	355		Travel	500	0	500	0	500		
591	524		In Service/Staff Development	1,500	0	1,500	0	1,500		
592										
593			<b>Total Fiscal Services</b>	<b>87,350</b>	<b>0</b>	<b>87,350</b>	<b>0</b>	<b>87,350</b>		
594										

LCBOE:  
MUSIC funds, Pulling  
from fund balance.

LCBOE:  
MUSIC donation  
expenses \$638.  
MUSIC funds, Pulling  
from fund balance  
\$32,788.

Loudon County Board of Education  
 General Purpose School Fund 141  
 Fiscal Year Ending June 30, 2018

	A	B	C	D	E	F	G	H	I	J
1	<b>BUDGET AMENDMENTS</b>									
2	<b>General Fund 141</b>									
3	<b>Account Number</b>		<b>9/18/2017 11:02</b>		<b>2017-2018</b>	<b>2017-2018</b>	<b>Approved</b>	<b>Proposed</b>	<b>Proposed</b>	
4				<b>Original Budget</b>	<b>Amendments</b>	<b>Amended Budget</b>	<b>Amendments</b>	<b>Amended Budget</b>		
595	72610		<i>Operation of Plant</i>							
596	166		Custodial Personnel	33,096	0	33,096	0		33,096	
597	201		Social Security	2,052	0	2,052	0		2,052	
598	204		State Retirement	3,275	0	3,275	0		3,275	
599	205-RET-VIS		Employee and Dependent Insurance	275	0	275	0		275	
600	206		Life Insurance	180	0	180	0		180	
601	206-RET-LIF		Life Insurance	840	0	840	0		840	
602	207		Medical Insurance	7,050	0	7,050	0		7,050	
603	208		Dental Insurance	350	0	350	0		350	
604	208-RET-DEN		Dental Insurance	2,102	0	2,102	0		2,102	
605	212		Employer Medicare	483	0	483	0		483	
606	399		Other Contracted Services	1,295,000	0	1,295,000	0		1,295,000	
607	399-FLM		Other Contracted Services- Fort Loudoun Middle School	2,500	0	2,500	0		2,500	
608	399-GBS		Other Contracted Services - Greenback School	12,500	0	12,500	0		12,500	
609	399-LHS		Other Contracted Services - Loudon High School	10,000	0	10,000	0		10,000	
610	399-NMS		Other Contracted Services - North Middle School	2,500	0	2,500	0		2,500	
611	399-PES		Other Contracted Services - Philadelphia Elementary School	2,500	0	2,500	0		2,500	
612	415		Electricity	1,130,000	0	1,130,000	0		1,130,000	
613	425		Gasoline	1,000	0	1,000	0		1,000	
614	434		Natural Gas	120,000	0	120,000	0		120,000	
615	454		Water and Sewer	133,211	0	133,211	0		133,211	
616	502		Building and Contents Insurance	341,428	0	341,428	0		341,428	
617										
618			<b>Total Operation of Plant</b>	<b>3,100,342</b>	<b>0</b>	<b>3,100,342</b>	<b>0</b>		<b>3,100,342</b>	
619										

Loudoun County Board of Education  
 General Purpose School Fund 141  
 Fiscal Year Ending June 30, 2018

	A	B	C	D	E	F	G	H	I	J
1	<b>BUDGET AMENDMENTS</b>									
2	General Fund 141									
3	Account Number		9/18/2017 11:02	2017-2018	2017-2018	Approved	Proposed	Proposed		
4				Original Budget	Amendments	Amended Budget	Amendments	Amended Budget		
620	72620		<u>Maintenance of Plant</u>							
621	321		Engineering Services	0	0	0	0	0	0	
622	335		Maintenance and Repair Services-Building	250,000	0	250,000	0	250,000		
623	335-FLM		Maintenance and Repair Services-Building	0	0	0	180,000	180,000		
624	335-GBS		Maintenance and Repair Services-Building	0	0	0	77,500	77,500		
625	335-HPS		Maintenance and Repair Services-Building	0	0	0	7,500	7,500		
626	335-INS		Maintenance and Repair Services-Building	0	0	0	6,739	6,739		
627	335-LHS		Maintenance and Repair Services-Building	0	0	0	30,000	30,000		
628	335-NMS		Maintenance and Repair Services-Building	0	0	0	87,500	87,500		
629	335-PES		Maintenance and Repair Services-Building	0	0	0	10,000	10,000		
630	335-SES		Maintenance and Repair Services-Building	0	0	0	7,500	7,500		
631										
632			<b>Total Maintenance of Plant</b>	<b>250,000</b>	<b>0</b>	<b>250,000</b>	<b>406,739</b>	<b>656,739</b>		
633										
634	72710		<u>Transportation</u>							
635	105		Supervisor/Director	51,691	0	51,691	0	51,691		
636	201		Social Security	3,205	0	3,205	0	3,205		
637	204		State Retirement	5,113	0	5,113	0	5,113		
638	206		Life Insurance	187	0	187	0	187		
639	207		Medical Insurance	12,251	0	12,251	0	12,251		
640	208		Dental Insurance	364	0	364	0	364		
641	212		Employer Medicare	750	0	750	0	750		
642	313		Contracts with Parents	9,070	0	9,070	0	9,070		
643	315		Contracts with Vehicle Owners	1,758,320	0	1,758,320	0	1,758,320		
644	327		Freight Expenses	100	0	100	0	100		
645	336		Maintenance and Repair Services - Equipment	6,243	0	6,243	0	6,243		
646	340		Medical and Dental Services	3,000	0	3,000	0	3,000		
647	348		Postal Charges	100	0	100	0	100		
648	355		Travel	1,750	0	1,750	0	1,750		
649	399		Other Contracted Services	3,200	0	3,200	0	3,200		
650	435		Office Supplies	2,000	0	2,000	0	2,000		
651	524		In-Service/Staff Development	5,000	0	5,000	0	5,000		
652	599		Other Charges	5,985	0	5,985	0	5,985		
653	729		Transportation Equipment	0	0	0	0	0		
654	790		Other Equipment	4,000	0	4,000	0	4,000		
655										
656			<b>Total Transportation</b>	<b>1,872,329</b>	<b>0</b>	<b>1,872,329</b>	<b>0</b>	<b>1,872,329</b>		
657										
658										
659			<b>Total Support Services</b>	<b>12,172,833</b>	<b>0</b>	<b>12,172,833</b>	<b>498,602</b>	<b>12,671,435</b>		
660										
661	<b>Total Education</b>			<b>38,114,460</b>	<b>0</b>	<b>38,114,460</b>	<b>837,192</b>	<b>38,951,652</b>		
662										

LCBOE:  
 \$400,000 from Fund  
 Balance.  
 \$6,739 for FLMS  
 Insurance claim.



Loudon County Board of Education  
 General Purpose School Fund 141  
 Fiscal Year Ending June 30, 2018

	A	B	C	D	E	F	G	H	I	J
1	<b>BUDGET AMENDMENTS</b>									
2	General Fund 141									
3	9/18/2017 11:02									
4	Account Number			2017-2018	2017-2018	Approved	Proposed	Proposed		
				Original Budget	Amendments	Amended Budget	Amendments	Amended Budget		
663										
664	73300		<i>Community Services</i>							
665	105-CCLC		Supervisor/Director - CCLC Grant	7,375	0	7,375	0	7,375		
666	105-LEAP		Supervisor/Director - LEAP Grant	13,500	0	13,500	0	13,500		
667	116-CCLC		Teachers - CCLC Grant	98,000	0	98,000	(3,000)	95,000		LCBOE: CCLC amendments to match state budget.
668	116-LEAP		Teachers - LEAP Grant	150,098	0	150,098	49,902	200,000		
669	163-CCLC		Educational Assistants - CCLC Grant	8,219	0	8,219	3,000	11,219		
670	163-LEAP		Educational Assistants - LEAPS Grant	17,788	0	17,788	2,212	20,000		LCBOE: LEAP amendments to match state budget.
671	189-CCLC		Other Salaries & Wages - CCLC Grant	0	0	0	0	0		
672	189-FRC		Other Salaries & Wages - FRC Grant	0	0	0	25,234	25,234		LCBOE: FRC budget.
673	201-CCLC		Social Security - CCLC Grant	7,043	0	7,043	0	7,043		
674	201-FRC		Social Security - FRC Grant	0	0	0	1,565	1,565		
675	201-LEAP		Social Security - LEAPS Grant	11,246	0	11,246	3,231	14,477		
676	204-CCLC		State Retirement - CCLC	9,617	0	9,617	0	9,617		
677	204-FRC		State Retirement - FRC	0	0	0	2,448	2,448		
678	204-LEAP		State Retirement - LEAPS Grant	15,300	0	15,300	4,758	20,058		
679	204-READ		State Retirement - READ Grant	0	0	0	0	0		
680	206		Life Insurance	188	0	188	0	188		
681	206-RET-LIF		Life Insurance	216	0	216	0	216		
682	206-CCLC		Life Insurance - CCLC	0	0	0	0	0		
683	206-LEAP		Life Insurance - LEAPS Grant	0	0	0	0	0		
684	207		Medical Insurance	7,050	0	7,050	0	7,050		
685	207-CCLC		Medical Insurance - CCLC	0	0	0	0	0		
686	207-LEAP		Medical Insurance - LEAPS Grant	0	0	0	0	0		
687	208		Dental Insurance	866	0	866	0	866		
688	208-RET-DEN		Dental Insurance	1,011	0	1,011	0	1,011		
689	208-CCLC		Dental Insurance - CCLC	0	0	0	0	0		
690	208-LEAP		Dental Insurance - LEAPS Grant	0	0	0	0	0		
691	212-CCLC		Employer Medicare - CCLC	1,647	0	1,647	0	1,647		
692	212-FRC		Employer Medicare - FRC	0	0	0	365	365		
693	212-LEAP		Employer Medicare - LEAPS Grant	2,630	0	2,630	756	3,386		

Loudon County Board of Education  
 General Purpose School Fund 141  
 Fiscal Year Ending June 30, 2018

	A	B	C	D	E	F	G	H	I	J
1	<b>BUDGET AMENDMENTS</b>									
2	General Fund 141									
3	Account Number		9/18/2017 11:02	2017-2018	2017-2018	Approved	Proposed	Proposed		
4				Original Budget	Amendments	Amended Budget	Amendments	Amended Budget		
694	355	Travel		1,500	0	1,500	0	1,500		
695	355-CCLC	Travel - CCLC		200	0	200	0	200		
696	355-LEAP	Travel - LEAPS Grant		400	0	400	1,600	2,000		
697	399	Other Contracted Services		0	0	0	0	0		
698	399-LEAP	Other Contracted Services - LEAPS Grant		5,831	0	5,831	4,169	10,000		
699	422	Food Supplies		5,000	0	5,000	0	5,000		
700	422-LEAP	Food Supplies - LEAPS Grant		0	0	0	2,000	2,000		
701	422-WSF	Food Supplies - WSF		0	0	0	700	700		
702	499	Other Supplies and Materials		4,000	0	4,000	0	4,000		
703	499-CCLC	Other Supplies & Materials - CCLC		899	0	899	0	899		
704	499-CHR	Other Supplies & Materials - Christmas FRC		0	0	0	0	0		
705	499-CL	Other Supplies & Materials - CL		0	0	0	0	0		
706	499-FAM	Other Supplies & Materials - FAM		0	0	0	5,250	5,250		
707	499-FUEL	Other Supplies & Materials - Fuel Play 60		0	0	0	0	0		
708	499-LCAP	Other Supplies & Materials - LCA		0	0	0	0	0		
709	499-LEAP	Other Supplies & Materials - LEAPS Grant		9,207	0	9,207	8,997	18,204		
710	499-SUP	Other Supplies & Materials - SUP		0	0	0	0	0		
711	499-WSF	Other Supplies & Materials - WSF		0	0	0	0	0		
712	524	In Service/Staff Development		500	0	500	0	500		
713	524-CCLC	In Service/Staff Development - CCLC		0	0	0	0	0		
714	524-LEAP	In Service/Staff Development - LEAPS Grant		6,000	0	6,000	(3,000)	3,000		
715	599-FAM	Other Charges - FAM		0	0	0	0	0		
716	790	Other Equipment		2,300	0	2,300	0	2,300		
717	790-LEAP	Other Equipment - LEAPS Grant		0	0	0	500	500		
718										
719		<b>Total Community Services</b>		<b>387,631</b>	<b>0</b>	<b>387,631</b>	<b>110,687</b>	<b>498,318</b>		
720										

LCBOE:  
 Donation from June.  
 Pulling from fund  
 balance.

LCBOE:  
 Donation expenses.

Loudon County Board of Education  
 General Purpose School Fund 141  
 Fiscal Year Ending June 30, 2018

	A	B	C	D	E	F	G	H	I	J
1	<b>BUDGET AMENDMENTS</b>									
2	General Fund 141									
3	9/18/2017 11:02									
4	Account Number			2017-2018	2017-2018	Approved	Proposed	Proposed		
				Original Budget	Amendments	Amended Budget	Amendments	Amended Budget		
721	73400		<u>Early Childhood Education</u>							
722		116	Teachers	375,691	0	375,691	2,372	378,063		LCBOE: Final approved state PreK budget.
723		163	Educational Assistants	147,333	0	147,333	2,904	150,237		
724		195	Certified Substitute Teachers	1,000	0	1,000	0	1,000		
725		198	Non-Certified Substitute Teachers	6,000	0	6,000	0	6,000		
726		201	Social Security	32,862	0	32,862	327	33,189		
727		204	State Retirement	47,299	0	47,299	629	47,928		
728		206	Life Insurance	2,655	0	2,655	(261)	2,394		
729		206-RET-LIF	Life Insurance	652	0	652	0	652		
730		207	Medical Insurance	89,181	0	89,181	5,108	94,289		
731		207-RET-MED	Medical Insurance	1,950	0	1,950	0	1,950		
732		208	Dental Insurance	4,071	0	4,071	214	4,285		
733		208-RET-DEN	Dental Insurance	1,640	0	1,640	0	1,640		
734		212	Employer Medicare	7,686	0	7,686	76	7,762		
735		311-HHA	Contracts with Other School Systems	89,491	0	89,491	0	89,491		
736		429	Instructional Supplies	4,000	0	4,000	(2,400)	1,600		
737		499	Other Supplies & Materials	0	0	0	0	0		
738		524	In-Service/Staff Development	6,339	0	6,339	(4,469)	1,870		
739		599	Other Charges	420	0	420	0	420		
740		790	Other Equipment	4,500	0	4,500	(4,500)	0		
741										
742			<b>Total Early Childhood Education</b>	<b>822,770</b>	<b>0</b>	<b>822,770</b>	<b>0</b>	<b>822,770</b>		
743										
744	76000		<u>Capital Outlay</u>							
745										
746	76100		<u>Regular Capital Outlay</u>							
747		706	Building Construction	0	0	0	0	0		
748										
749			<b>Total Regular Capital Outlay</b>	<b>0</b>	<b>0</b>	<b>0</b>	<b>0</b>	<b>0</b>		
750										
751										
752										
753										

Loudon County Board of Education  
 General Purpose School Fund 141  
 Fiscal Year Ending June 30, 2018

	A	B	C	D	E	F	G	H	I	J
1	<b>BUDGET AMENDMENTS</b>									
2	General Fund 141									
3	9/18/2017 11:02									
4	Account Number			2017-2018	2017-2018	Approved	Proposed	Proposed		
5				Original Budget	Amendments	Amended Budget	Amendments	Amended Budget		
754										
755	80000		Debt Service							
756										
757	82130		Principal							
758		601	Principal On Bonds	0	0	0	0	0		0
759		602	Principal on Notes	0	0	0	0	0		0
760										
761				0	0	0	0	0		0
762										
763										
764	82300		Other Debt Service							
765										
766	82330		Education							
767		699	Other Debt Service	0	0	0	0	0		0
768										
769			Total Education Debt Service	0	0	0	0	0		0
770										
771										
772	80000		Total Education Debt Service	0	0	0	0	0		0
773										
774	90000		Capital Projects							
775										
776	99000		Other Uses							
777										
778		99100	Transfer out							
779		590	Transfer to other funds	0	0	0	0	0		0
780										
781			Total Expenditures	39,324,861	0	39,324,861	947,879	40,272,740		
782										
783			Total Other Uses	0	0	0	0	0		0
784										
785			Total General Purpose School	39,324,861	0	39,324,861	947,879	40,272,740		
786										
787										
788										
789										
790			Beginning Fund Balance (Unaudited)	4,125,522	0	4,125,522	0	4,125,522		
791										
792										
793			Total Revenue	37,121,511	0	37,121,511	481,910	37,603,421		
794										
795										
796			Total Available Funds	41,247,033	0	41,247,033	481,910	41,728,943		
797										
798										
799			Total Expenditures	39,324,861	0	39,324,861	947,879	40,272,740		
800										
801										
802			Estimated Ending Fund Balance	1,922,172	0	1,922,172	(465,969)	1,456,203		
803										
804										
805										

\* \$300,000 was transferred to sub fund 999 of fund 142 that can be pulled back for regular fund balance purposes at any time.

Loudon County Board of Education  
 School Federal Projects Fund 142  
 Fiscal Year Ending June 30, 2018

1	A	B	C	D	E	F	G	H	I
2	Account Number		Federal Fund 142	2017-2018	2017-2018	Approved	Proposed	Proposed	
3			9/18/2017 11:09	Org Bgt	Amds	Amded Bgt	Amds	Amded Budget	
4									
5	Federal Funds School								
6									
7	Sub Fund		010 - Consolidated Administration Revenue						
8									
9	47100		<i>Federal Through State</i>						
10	47141		Title I Grants to Local Educ Agencies	101,245.00	0.00	101,245.00	9,408.49	110,653.49	LCBOE: New Allocation.
11									
12	47146		English Language Acquisition Grants	286.66	0.00	286.66	(3.49)	283.17	
13									
14	47189		Eisenhower Prof Development State Grants	13,181.34	0.00	13,181.34	0.00	13,181.34	
15									
16									
17	49000		<i>Other Revenue Sources</i>						
18	49800		Transfers In	0.00	0.00	0.00	0.00	0.00	
19									
20			Total Other Revenue	114,713.00	0.00	114,713.00	9,405.00	124,118.00	
21									
22	Sub Fund		010 - Consolidated Administration Expenses						
23									
24	72210								
25	105		Supervisory/Director	64,028.00	0.00	64,028.00	0.00	64,028.00	
26	161		Secretary(s)	20,000.00	0.00	20,000.00	0.00	20,000.00	
27	201		Social Security	5,220.00	0.00	5,220.00	0.00	5,220.00	
28	204		State Retirement	7,800.00	0.00	7,800.00	0.00	7,800.00	
29	206		Life Insurance	0.00	0.00	0.00	0.00	0.00	
30	207		Medical Insurance	0.00	0.00	0.00	0.00	0.00	
31	208		Dental Insurance	0.00	0.00	0.00	0.00	0.00	
32	212		Employer Medicare	1,220.00	0.00	1,220.00	0.00	1,220.00	
33	355		Travel	4,000.00	0.00	4,000.00	4,000.00	8,000.00	
34	499		Other Supplies and Materials	500.00	0.00	500.00	500.00	1,000.00	
35	524		In Service/Staff Development	11,945.00	0.00	11,945.00	4,905.00	16,850.00	
36	599		Other Charges	0.00	0.00	0.00	0.00	0.00	
37									
38									
39			Total Expenditures Consolidated Administration	114,713.00	0.00	114,713.00	9,405.00	124,118.00	
40									
41			Beginning Fund Balance	0.00	0.00	0.00	0.00	0.00	
42									
43			Revenues	114,713.00	0.00	114,713.00	9,405.00	124,118.00	
44									
45			Expenditures	114,713.00	0.00	114,713.00	9,405.00	124,118.00	
46									
47			Ending Fund Balance	0.00	0.00	0.00	0.00	0.00	
48									

Loudon County Board of Education  
 School Federal Projects Fund 142  
 Fiscal Year Ending June 30, 2018

	A	B	C	D	E	F	G	H	I
1			Federal Fund 142						
2	Account Number		9/18/2017 11:09	2017-2018	2017-2018	Approved	Proposed	Proposed	
3				Org Bgt	Amds	Amded Bgt	Amds	Amded Budget	
4									
49	Sub Fund		109 - Title I Revenue						
50									
51	47000		Federal Government						
52									
53	7100		Federal Through State						
54	47141		Title I Grants to Local Educ Agencies	689,869.25	0.00	689,869.25	97,306.26	787,175.51	LCBOE: New Allocation & carryover added.
55									
56	47141-CAR17		Title I Grants to Local Educ Agencies	0.00	0.00	0.00	165,430.52	165,430.52	
57									
58			Total Federal Through State	689,869.25	0.00	689,869.25	262,736.78	952,606.03	
59									
60			Total Federal Government	689,869.25	0.00	689,869.25	262,736.78	952,606.03	
61									
62			Total Revenue	689,869.25	0.00	689,869.25	262,736.78	952,606.03	
63									
64			Total Other Sources	0.00	0.00	0.00	0.00	0.00	
65									
66			Total Title I Revenue	689,869.25	0.00	689,869.25	262,736.78	952,606.03	
67									
68									
69	Sub Fund		109 - Title I Expenses						
70									
71	70000		Education						
72									
73	71000		Instruction						
74									
75	71100		Regular Instruction Program						
76	116		Teachers	358,858.00	0.00	358,858.00	81,142.00	440,000.00	
77	163		Educational Assistants	48,094.00	0.00	48,094.00	5,906.00	54,000.00	
78	189		Other Salaries & Wages	500.00	0.00	500.00	6,500.00	7,000.00	
79	195		Certified Substitute Teachers	1,500.00	0.00	1,500.00	4,882.15	6,382.15	
80	198		Non-certified Substitute Teachers	2,500.00	0.00	2,500.00	7,500.00	10,000.00	
81	201		Social Security	25,511.00	0.00	25,511.00	7,489.00	33,000.00	
82	204		State Retirement	32,630.00	0.00	32,630.00	8,665.00	41,295.00	
83	206		Life Insurance	1,436.40	0.00	1,436.40	1.60	1,438.00	
84	207		Medical Insurance	48,723.40	0.00	48,723.40	7,498.60	56,222.00	
85	208		Dental Insurance	2,430.12	0.00	2,430.12	(230.12)	2,200.00	
86	212		Employer Medicare	5,967.00	0.00	5,967.00	3,033.00	9,000.00	
87	429		Instructional Supplies	24,699.33	0.00	24,699.33	47,892.18	72,591.51	
88	722		Regular Instruction Equipment	25,000.00	0.00	25,000.00	70,000.00	95,000.00	
89									
90			Total Regular Instruction Program	577,849.25	0.00	577,849.25	250,279.41	828,128.66	
91									
92									
93									

Loudon County Board of Education  
 School Federal Projects Fund 142  
 Fiscal Year Ending June 30, 2018

1	A	B	C	D	E	F	G	H	I
2	Account Number		Federal Fund 142	2017-2018	2017-2018	Approved	Proposed	Proposed	
3			9/18/2017 11:09	Org Bgt	Amds	Amded Bgt	Amds	Amded Budget	
4									
94	Sub Fund		109 - Title I						
95									
96	70000		Education						
97									
98	72000		Support Services						
99									
100	72130		Other Student Support						
101	189		Other Salaries & Wages	20,996.00	0.00	20,996.00	2,004.00	23,000.00	
102	201		Social Security	1,302.00	0.00	1,302.00	198.00	1,500.00	
103	204		State Retirement	2,077.00	0.00	2,077.00	123.00	2,200.00	
104	212		Employer Medicare	305.00	0.00	305.00	95.00	400.00	
105	355		Travel	500.00	0.00	500.00	200.00	700.00	
106	599		Other Charges	9,000.00	0.00	9,000.00	(52.63)	8,947.37	
107									
108			Total Support Services	34,180.00	0.00	34,180.00	2,567.37	36,747.37	
109									
110	Sub Fund		109 - Title I						
111									
112	70000		Education						
113									
114	72000		Instruction						
115									
116	72210		ESEA Title I						
117	189		Other Salaries and Wages	58,395.00	0.00	58,395.00	605.00	59,000.00	
118	201		Social Security	3,620.00	0.00	3,620.00	80.00	3,700.00	
119	204		State Retirement	5,302.00	0.00	5,302.00	98.00	5,400.00	
120	206		Life Insurance	160.00	0.00	160.00	20.00	180.00	
121	207		Medical Insurance	7,168.00	0.00	7,168.00	32.00	7,200.00	
122	208		Dental Insurance	348.00	0.00	348.00	2.00	350.00	
123	212		Employer Medicare	847.00	0.00	847.00	53.00	900.00	
124	355		Travel	1,000.00	0.00	1,000.00	1,000.00	2,000.00	
125	399		Other Contracted Services	0.00	0.00	0.00	0.00	0.00	
126	499		Other Supplies and Materials	500.00	0.00	500.00	500.00	1,000.00	
127	524		In-Service/Staff Development	500.00	0.00	500.00	7,500.00	8,000.00	
128	599		Other Charges	0.00	0.00	0.00	0.00	0.00	
129	790		Other Equipment	0.00	0.00	0.00	0.00	0.00	
130									
131			Total ESEA Title I	77,840.00	0.00	77,840.00	9,890.00	87,730.00	
132									
133									
134	99100		Transfers Out & Indirect Cost						
135	504		Indirect Cost	0.00	0.00	0.00	0.00	0.00	
136	590		Cumulative Transfers (including Consolidated Admin)	0.00	0.00	0.00	0.00	0.00	
137				0.00	0.00	0.00	0.00	0.00	
138									
139									
140			Total Expenditures Title I	689,869.25	0.00	689,869.25	262,736.78	952,606.03	
141									
142			Beginning Fund Balance	0.00	0.00	0.00	0.00	0.00	
143									
144			Revenues	689,869.25	0.00	689,869.25	262,736.78	952,606.03	
145									
146			Expenditures	689,869.25	0.00	689,869.25	262,736.78	952,606.03	
147									
148			Ending Fund Balance	0.00	0.00	0.00	0.00	0.00	

Loudon County Board of Education  
 School Federal Projects Fund 142  
 Fiscal Year Ending June 30, 2018

1	A	B	C	D	E	F	G	H	I
2			<b>Federal Fund 142</b>						
3	Account Number		9/18/2017 11:09	2017-2018	2017-2018	Approved	Proposed	Proposed	
4				Org Bgt	Amds	Amded Bgt	Amds	Amded Budget	
227	Sub Fund		209 - Title IIA - Teacher Quality Revenue						
228									
229	47000		Federal Government						
230									
231	47100		Federal Through State						
232	47189		Eisenhower Prof Development State Grants	129,475.84	0.00	129,475.84	3,417.82	132,893.66	LCBOE: New Allocation & carryover added.
233									
234	47189-CAR17		Eisenhower Prof Development State Grants	0.00	0.00	0.00	59,389.30	59,389.30	
235									
236			Total Federal Through State	129,475.84	0.00	129,475.84	62,807.12	192,282.96	
237									
238			Total Federal Government	129,475.84	0.00	129,475.84	62,807.12	192,282.96	
239									
240			Total Revenue	129,475.84	0.00	129,475.84	62,807.12	192,282.96	
241									
242			Total Other Sources	0.00	0.00	0.00	0.00	0.00	
243									
244			Total Title IIA - Teacher Quality Revenue	129,475.84	0.00	129,475.84	62,807.12	192,282.96	
245									
246									
247	Sub Fund		209 - Title IIA Teacher Quality Expenses						
248									
249	70000		Education						
250									
251	71000		Instruction						
252									
253	71100		Regular Instruction Program						
254	189		Other Salaries & Wages	0.00	0.00	0.00	0.00	0.00	
255	195		Certified Subs	3,000.00	0.00	3,000.00	3,000.00	6,000.00	
256	198		Non-Cert Subs	10,000.00	0.00	10,000.00	14,000.00	24,000.00	
257	201		Social Security	806.00	0.00	806.00	1,054.00	1,860.00	
258	204		State Retirement	0.00	0.00	0.00	0.00	0.00	
259	212		Employer Medicare	189.00	0.00	189.00	246.00	435.00	
260	429		Supplies/Materials	0.00	0.00	0.00	0.00	0.00	
261	499		Other Supplies/Materials	0.00	0.00	0.00	0.00	0.00	
262									
263			Total Regular Instruction Program	13,995.00	0.00	13,995.00	18,300.00	32,295.00	
264									
265									



Loudon County Board of Education  
School Federal Projects Fund 142  
Fiscal Year Ending June 30, 2018

A	B	C	D	E	F	G	H	I
1		Federal Fund 142						
2	Account Number	9/18/2017 11:09	2017-2018	2017-2018	Approved	Proposed	Proposed	
3			Org Bgt	Amds	Amded Bgt	Amds	Amded Budget	
4								
266	Sub Fund	209 - Title IIA Teacher Quality						
267								
268	70000	Education						
269								
270	72000	Support Services						
271								
272	72130	ESEA Title IIA						
273	322	Evaluation and Testing	2,000.00	0.00	2,000.00	0.00	2,000.00	
274			2,000.00	0.00	2,000.00	0.00	2,000.00	
275								
276	72210	ESEA Title IIA						
277	189	Other Salaries & Wages	72,680.00	0.00	72,680.00	3,000.00	75,680.00	
278	201	Social Security	4,507.00	0.00	4,507.00	186.00	4,693.00	
279	204	State Retirement	6,600.00	0.00	6,600.00	272.00	6,872.00	
280	206	Life Insurance	177.00	0.00	177.00	0.00	177.00	
281	207	Medical Insurance	7,170.00	0.00	7,170.00	10.00	7,180.00	
282	208	Dental Insurance	348.00	0.00	348.00	0.00	348.00	
283	212	Employer Medicare	1,053.00	0.00	1,053.00	45.00	1,098.00	
284	355	Travel	1,500.00	0.00	1,500.00	500.00	2,000.00	
285	399	Contracted Services	3,000.00	0.00	3,000.00	0.00	3,000.00	
286	499	Other Supplies and Materials	1,445.84	0.00	1,445.84	3,494.12	4,939.96	
287	524	In-Service/Staff Development	15,000.00	0.00	15,000.00	37,000.00	52,000.00	
288	599	Other Charges	0.00	0.00	0.00	0.00	0.00	
289			113,480.84	0.00	113,480.84	44,507.12	157,987.96	
290								
291	99100	Transfers Out & Indirect Cost						
292	504	Indirect Cost	0.00	0.00	0.00	0.00	0.00	
293	590	Cumulative Transfers (including Consolidated Admin)	0.00	0.00	0.00	0.00	0.00	
294			0.00	0.00	0.00	0.00	0.00	
295								
296								
297		Total Expenditures II	129,475.84	0.00	129,475.84	62,807.12	192,282.96	
298								
299		Beginning Fund Balance	0.00	0.00	0.00	0.00	0.00	
300								
301		Revenues	129,475.84	0.00	129,475.84	62,807.12	192,282.96	
302								
303		Expenditures	129,475.84	0.00	129,475.84	62,807.12	192,282.96	
304								
305		Ending Fund Balance	0.00	0.00	0.00	0.00	0.00	

Loudon County Board of Education  
 School Federal Projects Fund 142  
 Fiscal Year Ending June 30, 2018

	A	B	C	D	E	F	G	H	I
1			Federal Fund 142						
2	Account Number		9/18/2017 11:09	2017-2018	2017-2018	Approved	Proposed	Proposed	
3				Org Bgt	Amds	Amded Bgt	Amds	Amded Budget	
4									
352									
353	Sub Fund		309 - Title III Revenue						
354									
355	47000		Federal Government						
356									
357	47100		Federal Through State						
358		47146	Title II English Language Acquisition Grants	14,046.63	0.00	14,046.63	2,475.14	16,521.77	LCBOE: New Allocation & Carryover added.
359									
360		47146-CAR17	Title II English Language Acquisition Grants	0.00	0.00	0.00	4,167.73	4,167.73	
361									
362			Total Federal Through State	14,046.63	0.00	14,046.63	6,642.87	20,689.50	
363									
364			Total Federal Government	14,046.63	0.00	14,046.63	6,642.87	20,689.50	
365									
366			Total Revenue	14,046.63	0.00	14,046.63	6,642.87	20,689.50	
367									
368			Total Other Sources	0.00	0.00	0.00	0.00	0.00	
369									
370			Total Title III Revenue	14,046.63	0.00	14,046.63	6,642.87	20,689.50	
371									
372									

Loudon County Board of Education  
 School Federal Projects Fund 142  
 Fiscal Year Ending June 30, 2018

A	B	C	D	E	F	G	H	I
1		<b>Federal Fund 142</b>						
2	Account Number	9/18/2017 11:09	2017-2018	2017-2018	Approved	Proposed	Proposed	
3			Org Bgt	Amds	Amded Bgt	Amds	Amded Budget	
4								
373	Sub Fund	309 - Title III Expenses						
374								
375	70000	Education						
376								
377	71000	Instruction						
378								
379	71100	Regular Instruction Program						
380	163	Educational Assistants	0.00	0.00	0.00	0.00	0.00	
381	195	Certified Subs	300.00	0.00	300.00	0.00	300.00	
382	198	Non-Cert Subs	800.00	0.00	800.00	0.00	800.00	
383	201	Social Security	68.20	0.00	68.20	0.00	68.20	
384	204	State Retirement	0.00	0.00	0.00	0.00	0.00	
385	206	Life Insurance	0.00	0.00	0.00	0.00	0.00	
386	207	Medical Insurance	0.00	0.00	0.00	0.00	0.00	
387	208	Dental Insurance	0.00	0.00	0.00	0.00	0.00	
388	212	Employer Medicare	15.95	0.00	15.95	0.00	15.95	
389	429	Instructional Supplies	3,000.00	0.00	3,000.00	2,000.00	5,000.00	
390	499	Other Supplies & Materials	0.00	0.00	0.00	0.00	0.00	
391	722	Regular Instruction Equipment	0.00	0.00	0.00	0.00	0.00	
392								
393		Total Regular Instruction Program	4,184.15	0.00	4,184.15	2,000.00	6,184.15	
394								
395	Sub Fund	309 Title III						
396								
397	70000	Education						
398								
399	72000	Support Services						
400								
401	72130							
402	355	Travel	0.00	0.00	0.00	0.00	0.00	
403	524	In-Service/Staff Development	0.00	0.00	0.00	0.00	0.00	
404	790	Other Equipment	0.00	0.00	0.00	0.00	0.00	
405			0.00	0.00	0.00	0.00	0.00	
406								
407	72210							
408	355	Travel	0.00	0.00	0.00	0.00	0.00	
409	524	In-Service/Staff Development	8,000.00	0.00	8,000.00	(1,424.65)	6,505.35	
410	790	Other Equipment	1,862.48	0.00	1,862.48	6,137.52	8,000.00	
411			9,862.48	0.00	9,862.48	4,642.87	14,505.35	
412								
413								
414								
415	99100	Transfers Out & Indirect Cost						
416	504	Indirect Cost	0.00	0.00	0.00	0.00	0.00	
417	590	Cumulative Transfers (including Consolidated Admin)	0.00	0.00	0.00	0.00	0.00	
418			0.00	0.00	0.00	0.00	0.00	
419								
420		Total Expenditures Title III	14,046.63	0.00	14,046.63	6,642.87	20,689.50	
421								
422		Beginning Fund Balance	0.00	0.00	0.00	0.00	0.00	
423								
424		Revenues	14,046.63	0.00	14,046.63	6,642.87	20,689.50	
425								
426		Expenditures	14,046.63	0.00	14,046.63	6,642.87	20,689.50	
427								
428		Ending Fund Balance	0.00	0.00	0.00	0.00	0.00	

Loudon County Board of Education  
 School Federal Projects Fund 142  
 Fiscal Year Ending June 30, 2018

1	A	B	C	D	E	F	G	H	I
2	Account Number		Federal Fund 142	2017-2018	2017-2018	Approved	Proposed	Proposed	
3			9/18/2017 11:09	Org Bgt	Amds	Amded Bgt	Amds	Amded Budget	
4									
507									
508	Sub Fund		809 - Carl Perkins Revenue						
509									
510	47000		Federal Government						
511									
512	47100		Federal Through State						
513	47131		Vocational Educ - Basic Grants to States	68,737.68	0.00	68,737.68	0.00	68,737.68	
514									
515	47131-RES		Vocational Educ - Reserve Grant	0.00	0.00	0.00	5,000.00	5,000.00	LCBOE: Reserve Grant.
516									
517			Total Federal Through State	68,737.68	0.00	68,737.68	5,000.00	73,737.68	
518									
519			Total Federal Government	68,737.68	0.00	68,737.68	5,000.00	73,737.68	
520									
521			Total Revenue	68,737.68	0.00	68,737.68	5,000.00	73,737.68	
522									
523			Total Other Sources	0.00	0.00	0.00	0.00	0.00	
524									
525			Total Carl Perkins Revenue	68,737.68	0.00	68,737.68	5,000.00	73,737.68	
526									
527									
528	Sub Fund		809 - Carl Perkins Expenses						
529									
530	70000		Education						
531									
532	71000		Instruction						
533									
534	71300		Vocational Education Program						
535	116		Teachers	0.00	0.00	0.00	0.00	0.00	
536	189		Other Salaries & Wages	0.00	0.00	0.00	0.00	0.00	
537	201		Social Security	0.00	0.00	0.00	0.00	0.00	LCBOE: Reserve Grant expenses.
538	204		State Retirement	0.00	0.00	0.00	0.00	0.00	
539	212		Employer Medicare	0.00	0.00	0.00	0.00	0.00	
540	355		Travel	0.00	0.00	0.00	0.00	0.00	
541	499-RES		Other Supplies and Materials	0.00	0.00	0.00	5,000.00	5,000.00	
542	730		Vocational Instruction Equipment	43,037.68	0.00	43,037.68	500.00	43,537.68	
543	730-RES		Vocational Instruction Equipment	0.00	0.00	0.00	0.00	0.00	
544									
545			Total Vocational Education Program	43,037.68	0.00	43,037.68	5,500.00	48,537.68	
546									

Loudon County Board of Education  
 School Federal Projects Fund 142  
 Fiscal Year Ending June 30, 2018

1	A	B	C	D	E	F	G	H	I
2	Account Number		Federal Fund 142 9/18/2017 11:09	2017-2018	2017-2018	Approved	Proposed	Proposed	
3				Org Bgt	Amds	Amded Bgt	Amds	Amded Budget	
547	Sub Fund		809 - Carl Perkins						
548									
549	70000		Education						
550									
551	72000		Support Services						
552									
553	72130		<i>Other Student Support</i>						
554		146	Bus Drivers (CTSO Transportation)	0.00	0.00	0.00	0.00	0.00	
555		355	Travel	6,000.00	0.00	6,000.00	0.00	6,000.00	
556		399	Other Contracted Services	2,500.00	0.00	2,500.00	(500.00)	2,000.00	
557		524	In-Service/Staff Development	10,200.00	0.00	10,200.00	0.00	10,200.00	
558		599	Other Charges	0.00	0.00	0.00	0.00	0.00	
559									
560			<b>Total Other Student Support</b>	<b>18,700.00</b>	<b>0.00</b>	<b>18,700.00</b>	<b>(500.00)</b>	<b>18,200.00</b>	
561									
562									
563	Sub Fund		809 - Carl Perkins						
564									
565	70000		Education						
566									
567	72000		Support Services						
568									
569	72230		<i>Vocational Education Program</i>						
570		355	Travel	3,000.00	0.00	3,000.00	0.00	3,000.00	
571		524	In-Service/Staff Development	4,000.00	0.00	4,000.00	0.00	4,000.00	
572									
573									
574			<b>Total Vocational Education Program</b>	<b>7,000.00</b>	<b>0.00</b>	<b>7,000.00</b>	<b>0.00</b>	<b>7,000.00</b>	
575									
576									
577			<b>Total Expenditures Carl Perkins</b>	<b>68,737.68</b>	<b>0.00</b>	<b>68,737.68</b>	<b>5,000.00</b>	<b>73,737.68</b>	
578									
579			Beginning Fund Balance	0.00	0.00	0.00	0.00	0.00	
580									
581			Revenues	68,737.68	0.00	68,737.68	5,000.00	73,737.68	
582									
583			Expenditures	68,737.68	0.00	68,737.68	5,000.00	73,737.68	
584									
585			<b>Ending Fund Balance</b>	<b>0.00</b>	<b>0.00</b>	<b>0.00</b>	<b>0.00</b>	<b>0.00</b>	
586									
587									

Loudon County Board of Education  
 School Federal Projects Fund 142  
 Fiscal Year Ending June 30, 2018

	A	B	C	D	E	F	G	H	I
1			<b>Federal Fund 142</b>						
2	<b>Account Number</b>		9/18/2017 11:09	<b>2017-2018</b>	<b>2017-2018</b>	<b>Approved</b>	<b>Proposed</b>	<b>Proposed</b>	
3				<b>Org Bgt</b>	<b>Amds</b>	<b>Amded Bgt</b>	<b>Amds</b>	<b>Amded Budget</b>	
4									
588	<b>Sub Fund</b>		899 - Discretionary Supplemental Funds - IDEA Revenue						
589									
590	47000		Federal Government						
591									
592	47100		Federal Through State						
593	47143		Special Education Grants to States	0.00	0.00	0.00	9,079.13	9,079.13	LCBOE: New Allocation.
594									
595	47143-LRE		Special Education Grants to States	4,200.00	0.00	4,200.00	0.00	4,200.00	
596									
597	47143-TRAN		Special Education Grants to States	64,603.73	0.00	64,603.73	0.27	64,604.00	
598									
599			<b>Total Federal Through State</b>	<b>68,803.73</b>	<b>0.00</b>	<b>68,803.73</b>	<b>9,079.40</b>	<b>77,883.13</b>	
600									
601			<b>Total Federal Government</b>	<b>68,803.73</b>	<b>0.00</b>	<b>68,803.73</b>	<b>9,079.40</b>	<b>77,883.13</b>	
602									
603			<b>Total Revenue</b>	<b>68,803.73</b>	<b>0.00</b>	<b>68,803.73</b>	<b>9,079.40</b>	<b>77,883.13</b>	
604									
605			<b>Total Other Sources</b>	<b>0.00</b>	<b>0.00</b>	<b>0.00</b>	<b>0.00</b>	<b>0.00</b>	
606									
607			<b>Total IDEA B Revenue</b>	<b>68,803.73</b>	<b>0.00</b>	<b>68,803.73</b>	<b>9,079.40</b>	<b>77,883.13</b>	
608									
609									

Loudon County Board of Education  
School Federal Projects Fund 142  
Fiscal Year Ending June 30, 2018

	A	B	C	D	E	F	G	H	I
1			<b>Federal Fund 142</b>						
2	Account Number		9/18/2017 11:09	2017-2018	2017-2018	Approved	Proposed	Proposed	
3				Org Bgt	Amds	Amded Bgt	Amds	Amded Budget	
4									
610	Sub Fund		899 - Discretionary Supplemental Funds - IDEA Expenses						
611									
612	70000		Education						
613									
614	71000		Instruction						
615									
616	71200		Special Education Program						
617		116-TRAN	Teachers	49,500.00	0.00	49,500.00	0.00	49,500.00	
618		201-TRAN	Social Security	3,200.00	0.00	3,200.00	0.00	3,200.00	
619		204-TRAN	State Retirement	4,778.73	0.00	4,778.73	0.27	4,779.00	
620		206-TRAN	Life Insurance	180.00	0.00	180.00	0.00	180.00	
621		207-TRAN	Medical Insurance	5,800.00	0.00	5,800.00	0.00	5,800.00	
622		208-TRAN	Dental Insurance	430.00	0.00	430.00	0.00	430.00	
623		212-TRAN	Employer Medicare	715.00	0.00	715.00	0.00	715.00	
624		399-LRE	Other Contracted Services	4,200.00	0.00	4,200.00	(1,114.14)	2,800.00	
625		725	Special Education Equipment	0.00	0.00	0.00	0.00	0.00	
626									
627			Total Regular Instruction Program	68,803.73	0.00	68,803.73	(1,114.14)	67,404.00	
628									
629	Sub Fund		899 - Discretionary Supplemental Funds - IDEA						
630									
631	70000		Education						
632									
633	72000		Support Services						
634									
635	72220		Special Education Program						
636		355	Travel	0.00	0.00	0.00	0.00	0.00	
637		499	Other Supplies & Materials	0.00	0.00	0.00	3,079.13	3,079.13	
638		524	In-Service/Staff Development	0.00	0.00	0.00	6,000.00	6,000.00	
639									
640			Total Special Education Program	0.00	0.00	0.00	9,079.13	9,079.13	
641									
642	72710		Transportation						
643		355-TRAN	Travel	0.00	0.00	0.00	0.00	0.00	
644		399-LRE	Other Contracted Services	0.00	0.00	0.00	1,400.00	1,400.00	
645		524	In-Service/Staff Development	0.00	0.00	0.00	0.00	0.00	
646									
647			Total Special Education Program	0.00	0.00	0.00	1,400.00	1,400.00	
648									
649									
650			Total Expenditures 899	68,803.73	0.00	68,803.73	9,079.40	77,883.13	
651									
652			Beginning Fund Balance	0.00	0.00	0.00	0.00	0.00	
653									
654			Revenues	68,803.73	0.00	68,803.73	9,079.40	77,883.13	
655									
656			Expenditures	68,803.73	0.00	68,803.73	9,079.40	77,883.13	
657									
658			Ending Fund Balance	0.00	0.00	0.00	0.00	0.00	

Loudon County Board of Education  
School Federal Projects Fund 142  
Fiscal Year Ending June 30, 2018

1	A	B	C	D	E	F	G	H	I
2	Account Number		Federal Fund 142 9/18/2017 11:09	2017-2018	2017-2018	Approved	Proposed	Proposed	
3				Org Bgt	Amds	Amded Bgt	Amds	Amded Budget	
4									
659									
660									
661	Sub Fund		909 - IDEA B Revenue						
662									
663	47000		Federal Government						
664									
665	47100		Federal Through State						
666	47143		Special Education Grants to States	982,733.00	0.00	982,733.00	1,320.00	984,053.00	LCBOE: New Allocation & carryover added.
667									
668	47143-CAR17		Special Education Grants to States	0.00	0.00	0.00	97,069.48	97,069.48	
669									
670			Total Federal Through State	982,733.00	0.00	982,733.00	98,389.48	1,081,122.48	
671									
672			Total Federal Government	982,733.00	0.00	982,733.00	1,320.00	984,053.00	
673									
674			Total Revenue	982,733.00	0.00	982,733.00	98,389.48	1,081,122.48	
675									
676			Total Other Sources	0.00	0.00	0.00	0.00	0.00	
677									
678			Total IDEA B Revenue	982,733.00	0.00	982,733.00	98,389.48	1,081,122.48	
679									
680									
681	Sub Fund		909 - IDEA B Expenses						
682									
683	70000		Education						
684									
685	71000		Instruction						
686									
687	71200		Special Education Program						
688	116		Teachers	37,356.48	0.00	37,356.48	2,047.14	39,403.62	
689	128		Home Bound Teachers	0.00	0.00	0.00	0.00	0.00	
690	163		Educational Assistants	322,194.99	0.00	322,194.99	68,175.63	390,370.62	
691	189		Other Salaries & Wages	1,000.00	0.00	1,000.00	0.00	1,000.00	
692	198		Non-Cert Sub Teachers	0.00	0.00	0.00	0.00	0.00	
693	201		Social Security	29,644.06	0.00	29,644.06	(2,644.06)	27,000.00	
694	204		State Retirement	43,541.55	0.00	43,541.55	(4,241.55)	39,300.00	
695	206		Life Insurance	2,832.00	0.00	2,832.00	40.80	2,872.80	
696	207		Medical Insurance	132,863.33	0.00	132,863.33	(74,448.73)	58,414.60	
697	208		Dental Insurance	5,728.16	0.00	5,728.16	(750.26)	4,977.90	
698	212		Employer Medicare	6,398.87	0.00	6,398.87	(48.87)	6,350.00	
699	399		Other Contracted Services	0.00	0.00	0.00	0.00	0.00	
700	429		Instructional Supplies	25,298.16	0.00	25,298.16	(14,821.80)	10,476.36	
701	499		Other Supplies & Materials	0.00	0.00	0.00	0.00	0.00	
702									
703			Total Regular Instruction Program	606,857.60	0.00	606,857.60	(26,691.70)	580,165.90	
704									



Loudon County Board of Education  
 School Federal Projects Fund 142  
 Fiscal Year Ending June 30, 2018

	A	B	C	D	E	F	G	H	I
1			Federal Fund 142						
2	Account Number		9/18/2017 11:09	2017-2018	2017-2018	Approved	Proposed	Proposed	
3				Org Bgt	Amds	Amded Bgt	Amds	Amded Budget	
4									
705	Sub Fund		909 - IDEA B						
706									
707	70000		Education						
708									
709	72000		Support Services						
710									
711	72220		<i>Special Education Program</i>						
712		105	Supervisor/Director	62,918.70	0.00	62,918.70	2,954.29	65,872.99	
713		161	Secretary	39,194.52	0.00	39,194.52	40,763.28	79,957.80	
714		189	Other Salaries & Wages	56,610.25	0.00	56,610.25	2,021.39	58,631.64	
715		201	Social Security	10,165.57	0.00	10,165.57	2,511.10	12,676.67	
716		204	State Retirement	18,290.84	0.00	18,290.84	1,109.16	19,400.00	
717		206	Life Insurance	354.00	0.00	354.00	124.80	478.80	
718		207	Medical Insurance	13,677.10	0.00	13,677.10	7,824.06	21,501.16	
719		208	Dental Insurance	796.32	0.00	796.32	174.80	971.12	
720		212	Employer Medicare	2,768.10	0.00	2,768.10	196.60	2,964.70	
721		355	Travel	2,000.00	0.00	2,000.00	1,320.00	3,320.00	
722		399	Other Contracted Services	111,100.00	0.00	111,100.00	85,969.48	197,069.48	
723		524	In-Service/Staff Development	58,000.00	0.00	58,000.00	(19,887.78)	38,112.22	
724									
725			Total Special Education Program	375,875.40	0.00	375,875.40	125,081.18	500,956.58	
726									
727	Sub Fund		909 - IDEA B						
728									
729	70000		Education						
730									
731	72000		Support Services						
732									
733	72710		<i>Transportation</i>						
734		313	Contracts with Parents	0.00	0.00	0.00	0.00	0.00	
735		315	Contracts with Vehicle Owners	0.00	0.00	0.00	0.00	0.00	
736									
737			Total Transportation	0.00	0.00	0.00	0.00	0.00	
738									
739									
740			Total Expenditures 909	982,733.00	0.00	982,733.00	98,389.48	1,081,122.48	
741									
742			Beginning Fund Balance	0.00	0.00	0.00	0.00	0.00	
743									
744			Revenues	982,733.00	0.00	982,733.00	98,389.48	1,081,122.48	
745									
746			Expenditures	982,733.00	0.00	982,733.00	98,389.48	1,081,122.48	
747									
748			Ending Fund Balance	0.00	0.00	0.00	0.00	0.00	
749									

Loudon County Board of Education  
 School Federal Projects Fund 142  
 Fiscal Year Ending June 30, 2018

	A	B	C	D	E	F	G	H	I
1			Federal Fund 142						
2			9/18/2017 11:09	2017-2018	2017-2018	Approved	Proposed	Proposed	
3	Account Number			Org Bgt	Amds	Amded Bgt	Amds	Amded Budget	
4									
826									
827	Sub Fund		919 - Preschool Revenue						
828									
829	47000		Federal Government						
830									
831	47100		Federal Through State						
832		47145	Special Education Preschool Grants	13,293.00	0.00	13,293.00	(1,000)	13,292.00	LCBOE: New allocation & carryover added.
833								0.00	
834		47145-CAR17	Special Education Preschool Grants	0.00	0.00	0.00	5,662.55	5,662.55	
835									
836			Total Federal Through State	13,293.00	0.00	13,293.00	5,661.55	18,954.55	
837									
838			Total Federal Government	13,293.00	0.00	13,293.00	5,661.55	18,954.55	
839									
840			Total Revenue	13,293.00	0.00	13,293.00	5,661.55	18,954.55	
841									
842			Total Other Sources	0.00	0.00	0.00	0.00	0.00	
843									
844			Total Preschool Revenue	13,293.00	0.00	13,293.00	5,661.55	18,954.55	
845									
846									
847	Sub Fund		919 - Preschool Expenses						
848									
849	70000		Education						
850									
851	71000		Instruction						
852									
853	71200		Special Education Program						
854		399	Other Contracted Services	0.00	0.00	0.00	0.00	0.00	
855		429	Instructional Supplies	3,000.00	0.00	3,000.00	5,662.55	8,662.55	
856									
857	72220		Special Education Program						
858		399	Other Contracted Services	10,293.00	0.00	10,293.00	(1,000)	10,292.00	
859									
860			Total Expenditures Preschool	13,293.00	0.00	13,293.00	5,661.55	18,954.55	
861									
862			Beginning Fund Balance	0.00	0.00	0.00	0.00	0.00	
863									
864			Revenues	13,293.00	0.00	13,293.00	5,661.55	18,954.55	
865									
866			Expenditures	13,293.00	0.00	13,293.00	5,661.55	18,954.55	
867									
868			Ending Fund Balance	0.00	0.00	0.00	0.00	0.00	
869									

Loudon County Board of Education  
 School Federal Projects Fund 142  
 Fiscal Year Ending June 30, 2018

	A	B	C	D	E	F	G	H	I	
1			Federal Fund 142							
2	Account Number		9/18/2017 11:09	2017-2018	2017-2018	Approved	Proposed	Proposed		
3				Org Bgt	Amtd	Amtd Bgt	Amtd	Amtd Budget		
4										
870										
871	Sub Fund		999 - RESTRICTED FOR CASH FLOW							
872										
873										
874										
875	49000		Other Revenue Sources							
876	49800		Transfers In	0.00	0.00	0.00	0.00	0.00		
877										
878			Total Other Revenue	0.00	0.00	0.00	0.00	0.00		
879										
880										
881			Total Revenue	0.00	0.00	0.00	0.00	0.00		
882										
883										
884			Total RESTRICTED FOR CASH FLOW	0.00	0.00	0.00	0.00	0.00		
885										
886										
887										
888										
889										
890										
891			Fund 142 Total Beginning Fund Balance	0.00	0.00	0.00	0.00	0.00		
892										
893			Fund 142 Total Expenditures	2,081,672.13	0.00	2,081,672.13	459,722.20	2,541,394.33		
894										
895			Fund 142 Total Revenues	2,081,672.13	0.00	2,081,672.13	459,722.20	2,541,394.33 *		
896										
897			Fund 142 Total Ending Fund Balance	0.00	0.00	0.00	0.00	0.00		
898										
899			* \$300,000 in sub fund 999 was transferred from Fund 141 fund balance and can be transferred back to Fund 141 fund balance at any time.							
900										
901										

**LOUDON COUNTY COMMISSION**

**EXHIBIT 100217-**

**LOUDON COUNTY CLERK  
DARLENE M. RUSSELL, COUNTY CLERK  
101 MULBERRY ST., SUITE 200  
LOUDON, TN 37774  
TELEPHONE: 865-458-3314  
FAX: 865-458-9891**

**Notaries to be elected October 02, 2017**

---

JANNA B. ALBRIGHT

ABIGAIL ELIZABETH BENTLEY

KELLI C. BRANAM

DIANNE BROWN

MARY ALICE COBB

TAYLOR E. DOWD

JESSICA GREEN

DENNIS GREENAWALD

CREZ MAYOTTE

JUDITH ANN SMITH

ROSE WHITE