

## **LOUDON COUNTY COMMISSION WORKSHOP**

Monday, September 21, 2015

County Office Building

6:00 pm

### **1. Comments by Members of the General Public**

### **2. Loudon County Planning Director – Laura Smith**

- A. A Resolution to Amend the Loudon County Zoning Resolution, Article 7, Administration and Enforcement, Section 7.030 BUILDING PERMITS.
- B. A Resolution Amending the Zoning Map of Loudon County, Tennessee, Pursuant to Chapter Seven, §13-7-105 of Tennessee Code Annotated. To Rezone Approximately 0.91 Acres From R-1 (Suburban Residential District) to C-2 (General Commercial District). Referenced by: Tax Map 41, Parcel 130.01, Located at 180 Littleton Drive, Loudon, TN, Situated in the 1st Legislative District.
- C. A Resolution of the Loudon County Commission to Accept an Additional 850 Ft./0.161 Miles of Mountain Drive B Extending into the Traditions of Avalon, Within Avalon Subdivision into the Public Roadway System, Said Road Located in the 5<sup>th</sup> Legislative District of Loudon County, Tennessee.

### **3. Loudon County Mayor – Buddy Bradshaw**

- A. Updates to the Following Boards/Committees:
  - 1. Industrial Bond Board of Loudon County, Inc.
  - 2. Loudon County GIS Board
- B. Further Discussion on Employees Handbook

### **4. Loudon County Commissioner, Van Shaver**

- A. Discussion Concerning Howard Farmer's Planning Issues

### **5. Loudon County Commissioner, David Meers**

- A. Proclamation for David Blackburn.

**6. Loudon County Budget Director – Tracy Blair**

A. Budget Committee Recommendations.

**7. Any Other Items**

**8. Adjournment**

**A RESOLUTION TO AMEND THE LOUDON COUNTY ZONING  
RESOLUTION, ARTICLE 7, ADMINISTRATION AND ENFORCEMENT,  
SECTION 7.030 BUILDING PERMITS**

**WHEREAS**, the Loudon County Commission, in accordance with Chapter Seven, Section 13-7-105 of the Tennessee Code Annotated, may from time to time amend the number, shape, boundary, area or any regulation of or within any districts, or any other provision of the zoning resolution; and

**WHEREAS**, the Regional Planning Commission has forwarded its recommendation regarding this amendment to the Loudon County Zoning Resolution; and

**WHEREAS**, a notice of public hearing and a description of the resolution appeared in the September 2-3, 2015 Loudon County News Herald consistent with the provisions of Tennessee Code Annotated Section 13-7-105;

**NOW, THEREFORE, BE IT RESOLVED** by the Loudon County Commission that Article 7, Administration and Enforcement, Section 7.030 Building Permits of the Loudon County Zoning Resolution be amended by adding the following to the end of the first paragraph in the section.

**Article 7, Section 7:030. Building Permits.**

**No building permit shall be issued for any applicant who, prior to the issuance of said building permit, is in violation of any provision of the Loudon County Regional Subdivision Regulations or any development related resolutions in Loudon County, Tennessee, in any development within the County. The term "applicant" shall include an individual, including spouse/family, business entity such as a corporation, limited liability company (LLC) and/or any owner, member, shareholder, or partner in any business entity that is in violation of any resolution or regulation in any development within the County**

**BE IT RESOLVED**, that this Resolution shall take effect immediately, the public welfare requiring it.

\_\_\_\_\_  
**ATTEST**

\_\_\_\_\_  
**LOUDON COUNTY CHAIRMAN**


\_\_\_\_\_  
**DATE**

\_\_\_\_\_  
**APPROVED: LOUDON COUNTY MAYOR**

The vote on the question of approval of this Resolution by the Planning Commission is as follows:

APPROVED:   10  

DISAPPROVED:   0  

  
\_\_\_\_\_  
**ATTEST: SECRETARY, LOUDON COUNTY  
REGIONAL PLANNING COMMISSION**  
Dated: August 18, 2015

File# (15-08-53-RGZ-CO)



RESOLUTION

**A RESOLUTION AMENDING THE ZONING MAP OF LOUDON COUNTY, TENNESSEE, PURSUANT TO CHAPTER SEVEN, §13-7-105 OF THE TENNESSEE CODE ANNOTATED, TO REZONE APPROXIMATELY 0.91 ACRES FROM R-1 (SUBURBAN RESIDENTIAL DISTRICT) TO C-2 (GENERAL COMMERCIAL DISTRICT). REFERENCED BY: TAX MAP 41, PARCEL 130.01, LOCATED AT 180 LITTLETON DRIVE, LOUDON, TN, SITUATED IN THE 1ST LEGISLATIVE DISTRICT**

WHEREAS, the Loudon County Commission, in accordance with Chapter Seven, §13-7-105 of the Tennessee Code Annotated, may from time to time, amend the number, shape, boundary, area or any regulation of or within any district or districts, or any other provision of any zoning resolution, and

WHEREAS, the Regional Planning Commission has forwarded a recommendation regarding the amendment to the Zoning Map of Loudon County, Tennessee,

WHEREAS, a notice of public hearing and a description of the resolution appeared in the Loudon County News Herald on September 2-3, 2015 consistent with the provisions of Tennessee Code Annotated, §13-7-105, and

NOW, THEREFORE, BE IT RESOLVED by the Loudon County Commission that the Zoning Map of Loudon County, Tennessee be amended as follows:

Located at 180 Littleton Drive, Loudon, TN situated in the 1st Legislative District, referenced by Tax Map 41, Parcel 130.01, be rezoned from R-1 (Suburban Residential District) to C-2 (General Commercial District) as shown on the attached map; said map being part of this Resolution.

BE IT FINALLY RESOLVED, that this Resolution shall take effect immediately, the public welfare requiring it.

\_\_\_\_\_  
ATTEST

\_\_\_\_\_  
LOUDON COUNTY CHAIRMAN

DATE: \_\_\_\_\_

\_\_\_\_\_  
APPROVED: LOUDON COUNTY MAYOR

The votes on the question of approval of this Resolution by the Planning Commission are as follows:

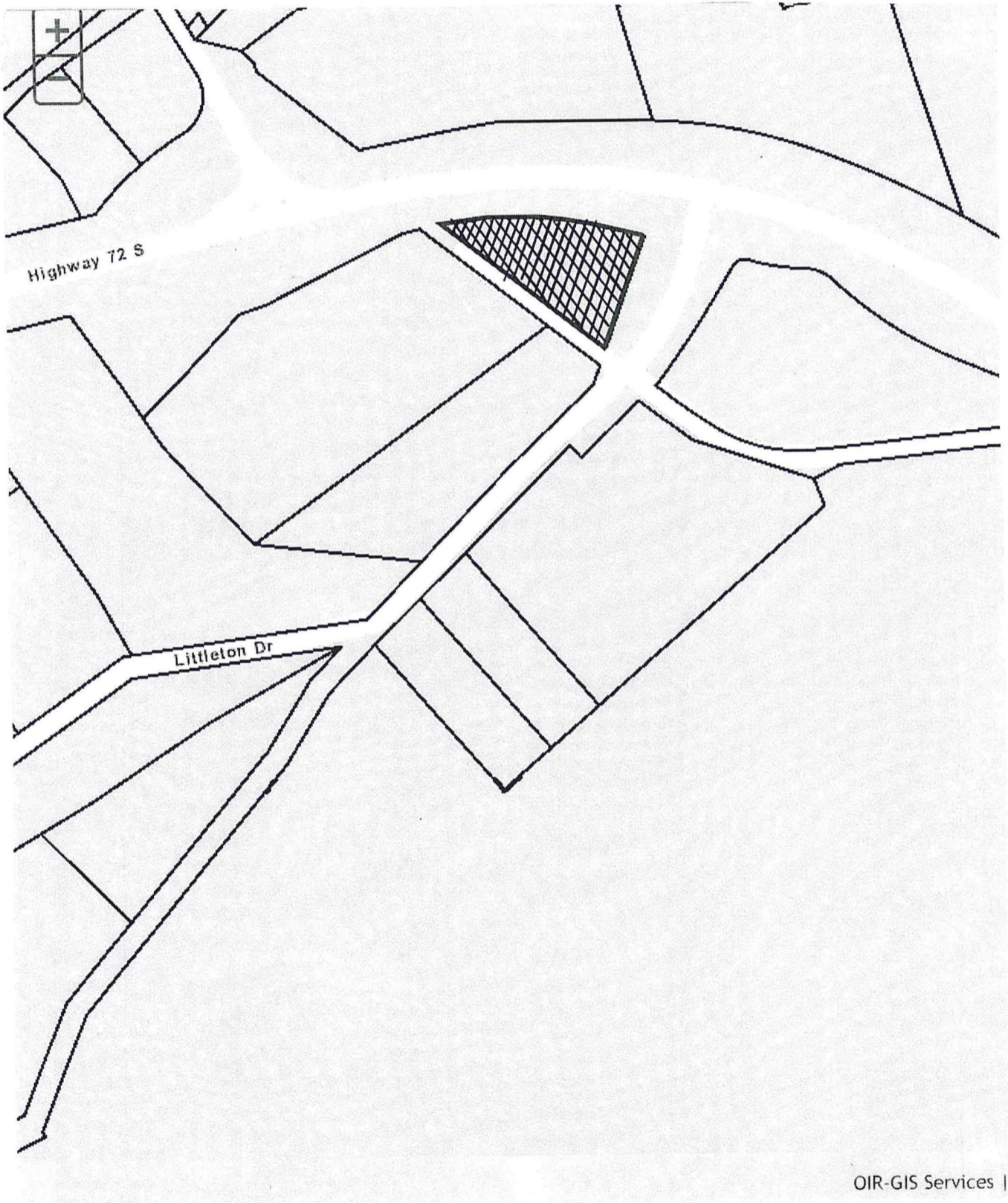
APPROVED: 10

DISAPPROVED: 0

Penelope G. McKea  
ATTEST: SECRETARY LOUDON COUNTY  
REGIONAL PLANNING COMMISSION  
Dated: August 18, 2015

FILE # [15-06-41-RZ-CO]

**REZONE APPROXIMATELY 0.91 ACRES FROM R-1 (SUBURBAN RESIDENTIAL DISTRICT) TO C-2 (GENERAL COMMERCIAL DISTRICT). REFERENCED BY: TAX MAP 41, PARCEL 130.01, LOCATED AT 180 LITTLETON DRIVE, LOUDON, TN, SITUATED IN THE 1ST LEGISLATIVE DISTRICT**





**RESOLUTION**

**A RESOLUTION OF THE LOUDON COUNTY COMMISSION TO ACCEPT AN ADDITIONAL 850 FT./0.161 MILES OF MOUNTAIN DRIVE B EXTENDING INTO THE TRADITIONS OF AVALON, WITHIN AVALON SUBDIVISION INTO THE PUBLIC ROADWAY SYSTEM, SAID ROAD LOCATED IN THE 5th LEGISLATIVE DISTRICT OF LOUDON COUNTY, TENNESSEE**

**WHEREAS**, the Loudon County Commission has the authority under Tennessee Code Annotated to accept the dedication of roads, to adopt policies and standards for the acceptance of new roads and to reopen previously closed county roads; and

**WHEREAS**, the Loudon County Regional Planning Commission has received a request from the developer of Avalon Subdivision to accept the following roads into the County Road system:

- 1) Mountain Drive B into The Traditions, Phase I of Avalon (approximately 0.161 miles) and 50' of Right-of-Way

**WHEREAS**, the Loudon County Regional Planning Commission has reviewed construction and right of way plans and recommends that the portion of the road be accepted into the County's Roadway System based on the design that is consistent with acceptance of roads to County public road standards.

**NOW, THEREFORE, BE IT RESOLVED**, that the Loudon County Commission approves the acceptance of this portion of the road, as shown on the attached map and described in the resolution, into the County's public roadway system.

**NOW, THEREFORE, BE IT FINALLY RESOLVED**, that this Resolution shall take affect immediately the public welfare requiring it.

**This Resolution adopted** \_\_\_\_\_

\_\_\_\_\_  
Attest, County Court Clerk

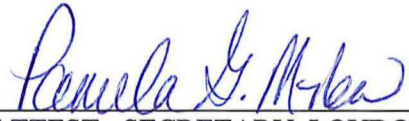
\_\_\_\_\_  
Loudon County Chairman

\_\_\_\_\_  
Approved: Loudon County Mayor

The vote on the question of approval of this Resolution by the Planning Commission is as follows:

APPROVED:   10  

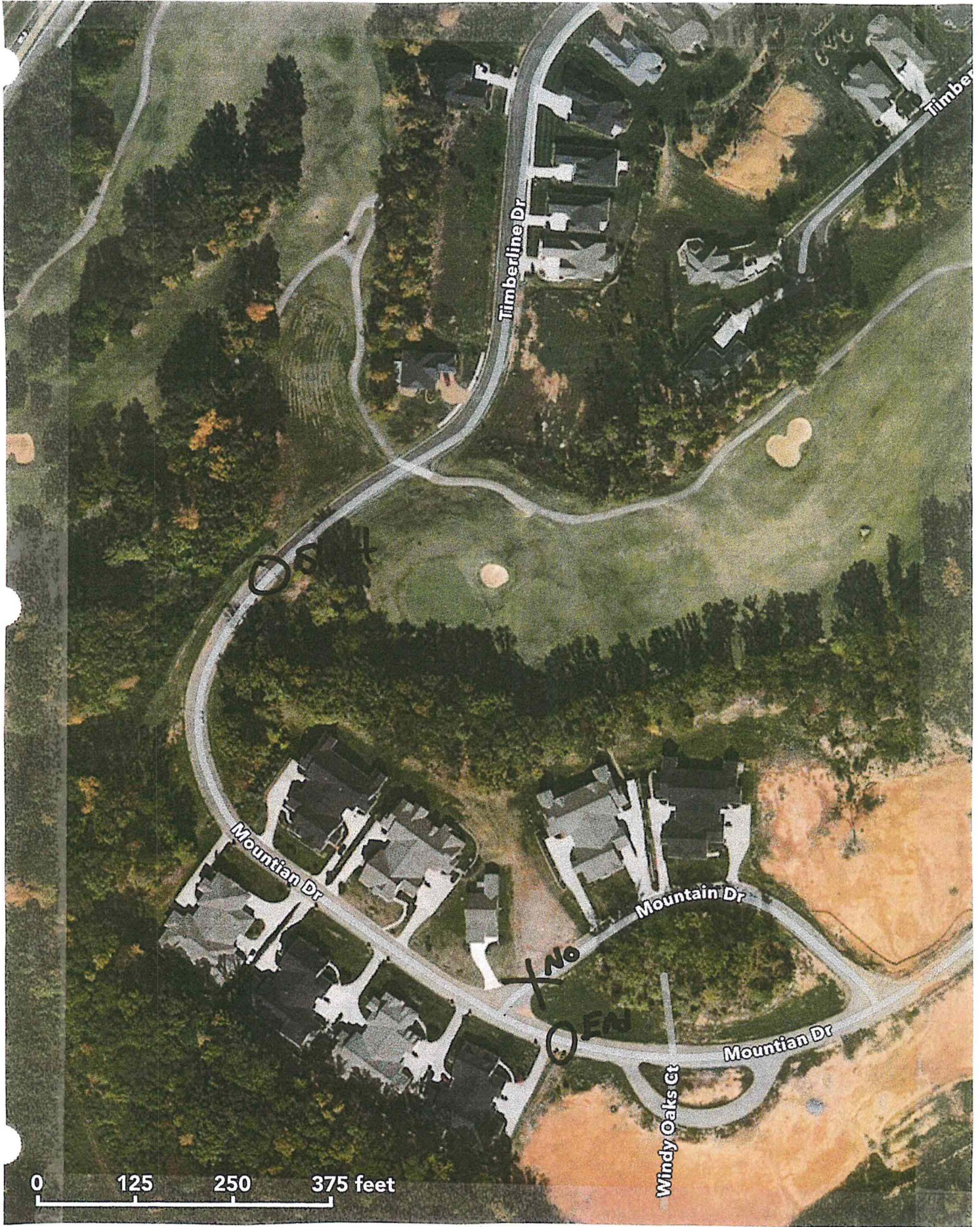
DISAPPROVED:   0  

  
\_\_\_\_\_  
ATTEST: SECRETARY, LOUDON COUNTY  
REGIONAL PLANNING COMMISSION  
DATE: August 18, 2015

FILE # 15-08-51-TR-CO



A RESOLUTION OF THE LOUDON COUNTY COMMISSION TO ACCEPT AN ADDITIONAL 850 FT./0.161 MILES OF MOUNTAIN DRIVE B EXTENDING INTO THE TRADITIONS OF AVALON, WITHIN AVALON SUBDIVISION INTO THE PUBLIC ROADWAY SYSTEM, SAID ROAD LOCATED IN THE 5th LEGISLATIVE DISTRICT OF LOUDON COUNTY, TENNESSEE





**LOUDON COUNTY COMMISSION**

**RESOLUTION 100515-**

**RESOLUTION APPROVING OR ACKNOWLEDGING BOARD OR  
COMMITTEE APPOINTMENT BY COUNTY MAYOR**

*WHEREAS*, by statute, and/or intergovernmental agreement and/or County Procedural Regulations, the County Mayor has authority to make certain committee and board appointments; and

*WHEREAS*, appointments are necessary and/or desirable at this time; and

*WHEREAS*, the County Mayor appoints the following members of

**INDUSTRIAL BOND BOARD OF LOUDON COUNTY, INC.**

| <b><u>Appointee</u></b> | <b><u>Term Expiration</u></b> |
|-------------------------|-------------------------------|
| <b><u>Panel A</u></b>   |                               |
| Mike Webb               | September 2016                |
| <b><u>Panel C</u></b>   |                               |
| James Thomason          | September 2021                |
| Jim Curtis              | September 2021                |
| Nancy Beaty             | September 2021                |

***NOW, THEREFORE, BE IT RESOLVED*** that the Loudon County Commission, meeting in regular session assembled this 5th day of October, 2015, hereby approves or acknowledges (as appropriate) the said appointments.

\_\_\_\_\_  
COUNTY CHAIRMAN

**ATTEST:**

\_\_\_\_\_  
COUNTY CLERK

\_\_\_\_\_  
COUNTY MAYOR

The remaining members and their continuing expiration terms for said Board or Committee are as follows:

| <b><u>Appointee</u></b> | <b><u>Term Expiration</u></b> |
|-------------------------|-------------------------------|
| <b><u>Panel A</u></b>   |                               |
| Bruce Martin            | September 2016                |
| Harry W. Wampler        | September 2016                |
| <b><u>Panel B</u></b>   |                               |
| Mel Hines               | September 2020                |
| Tom Myers               | September 2020                |
| Ted Wampler, Jr.        | September 2020                |



**LOUDON COUNTY COMMISSION**

**RESOLUTION 100515-**

**RESOLUTION APPROVING OR ACKNOWLEDGING BOARD OR  
COMMITTEE APPOINTMENT BY COUNTY MAYOR**

*WHEREAS*, by statute, and/or intergovernmental agreement and/or County Procedural Regulations, the County Mayor has authority to make certain committee and board appointments; and

*WHEREAS*, appointments are necessary and/or desirable at this time; and

*WHEREAS*, the County Mayor appoints the following as members of the

**LOUDON COUNTY GIS BOARD**

**Appointee**

|                          |                                   |                     |
|--------------------------|-----------------------------------|---------------------|
| <b>Mike Campbell</b>     | <b>L. C. Assessor of Property</b> | <b>October 2018</b> |
| <b>Pat Phillips, EDA</b> | <b>Mayor's Designee</b>           | <b>October 2018</b> |
| <b>Patty Terry</b>       | <b>LCUB</b>                       | <b>October 2018</b> |
| <b>Craig Dunn</b>        | <b>LCUB</b>                       | <b>October 2018</b> |
| <b>Lynn Mills</b>        | <b>LUB</b>                        | <b>October 2018</b> |
| <b>John Davis</b>        | <b>LUB</b>                        | <b>October 2018</b> |
| <b>Jennifer Estes</b>    | <b>Commission Appointed</b>       | <b>October 2018</b> |

*NOW, THEREFORE, BE IT RESOLVED* that the Loudon County Commission, meeting in regular session assembled this 5th of October 2015, hereby approves and acknowledges (as appropriate), the said appointments.

\_\_\_\_\_  
COUNTY CHAIRMAN

**ATTEST:**

\_\_\_\_\_  
COUNTY CLERK

\_\_\_\_\_  
COUNTY MAYOR