

LOUDON COUNTY COMMISSION WORKSHOP

Monday, September 22, 2014

County Office Building

6:00 pm

- 1. This is the time for audience members to speak on items on or not on the Agenda.**

- 2. Planning and Codes Office Representative - Jim Jenkins**
 - A. A Resolution Amending the Zoning Map of Loudon County, Tennessee, Pursuant to Chapter 7, §13-7-105 of Tennessee Code Annotated, to Rezone Approximately 16.3 Acres from A-1 (Agricultural District) To C-2 (General Commercial District).
Referenced By: Tax Map 2. Parcel 92.00 Located on Buttermilk Road and Paw Paw Plains Road, Situated in the 5th Legislative District.

 - B. A Resolution Amending the Zoning Map of Loudon County, Tennessee, Pursuant to Chapter Seven, §13-7-105 of Tennessee Code Annotated. To Rezone Approximately 38.1 Acres From A-2 (Rural Residential District) to R-1 (Suburban Residential District) With Planned Unit Development (PUD) Overlay at 1.5 Units Per Acre,
Referenced by: Tax Map 51B, Group A, Parcels 1.00-20.00, 22.00, 8.03, And Part of Parcel 8.00 Located on Coytee Road, Including All Lots in Yellow Wood Subdivision, Phase I, (To Be Renamed River Cove) Situated in the 3rd Legislative District.

- 3. Loudon County Mayor – Buddy Bradshaw**
 - A. Discussion of Granting of Easement to Loudon Utilities Board, as Commission Approved at the Last Meeting, and All Paperwork Being Finalized.

- 4. Loudon County Commissioner – David Meers**
 - A. Discussion of an Interlocal Agreement Between Loudon County and the Loudon County Board of Education.

 - B. Discussion of Having the Capital Projects Committee Meet to Begin Dialogue on Loudon County High School/Highland Park Projects.

- 5. Loudon County Commissioner – Van Shaver**
 - A. Discussion of Street Condition in Warrior’s Chase Subdivision.

 - B. Discussion of Removal of Weapon Signs from County Buildings.

6. Loudon County Commissioner – Kelly Littleton-Brewster

- A. Request to TDOT to Install a Turn/Deceleration Lane at the Intersection of Hwy 72 and Grove Street.
- B. Discussion of Drafting a Resolution to Pursue Renaming the Bridge Crossing Sweetwater Creek on State Road 323 (Pond Creek Road) in Philadelphia after Judge William H. Russell.

7. Loudon County Budget Director – Tracy Blair

- A. Budget Committee Recommendations.

8. Any Other Items

9. Adjournment

RESOLUTION

A RESOLUTION AMENDING THE ZONING MAP OF LOUDON COUNTY, TENNESSEE, PURSUANT TO CHAPTER SEVEN, §13-7-105 OF THE TENNESSEE CODE ANNOTATED, TO REZONE APPROXIMATELY 38.1 ACRES FROM A-2 (RURAL RESIDENTIAL DISTRICT) TO R-1 (SUBURBAN RESIDENTIAL DISTRICT) WITH PLANNED UNIT DEVELOPMENT (PUD) OVERLAY AT 1.5 UNITS PER ACRE. REFERENCED BY: TAX MAP 51B, GROUP A, PARCELS 1.00-20.00, 22.00, 8.03, AND PART OF PARCEL 8.00 LOCATED ON COYTEE RD., INCLUDING ALL LOTS IN YELLOW WOOD SUBDIVISION, PHASE I, (TO BE RENAMED RIVER COVE) SITUATED IN THE 3RD LEGISLATIVE DISTRICT

WHEREAS, the Loudon County Commission, in accordance with Chapter Seven, §13-7-105 of the Tennessee Code Annotated, may from time to time, amend the number, shape, boundary, area or any regulation of or within any district or districts, or any other provision of any zoning resolution, and

WHEREAS, the Regional Planning Commission has forwarded a recommendation regarding the amendment to the Zoning Map of Loudon County, Tennessee,

WHEREAS, a notice of public hearing and a description of the resolution appeared in the Loudon County News Herald on September 17, 2014 consistent with the provisions of Tennessee Code Annotated, §13-7-105, and

NOW, THEREFORE, BE IT RESOLVED by the Loudon County Commission that the Zoning Map of Loudon County, Tennessee be amended as follows:

Located on Coytee Rd., and including all lots in Yellow Wood Subdivision, Phase I, (to be renamed River Cove) situated in the 3rd Legislative District, referenced by Tax Map 51B, Group A, Parcels 1.00-20.00, 22.00, 8.03, and part of parcel 8.00 be rezoned from A-2 (Rural Residential District) to R-1 (Suburban Residential District) with Planned Unit Development (PUD) Overlay at 1.5 units per acres, as shown on the attached map; said map being part of this Resolution.

BE IT FINALLY RESOLVED, that this Resolution shall take effect immediately, the public welfare requiring it.

ATTEST
CHAIRMAN

LOUDON COUNTY

DATE: _____

APPROVED: LOUDON COUNTY MAYOR

The votes on the question of approval of this Resolution by the Planning Commission are as follows:

APPROVED: _____

DISAPPROVED: 10-0

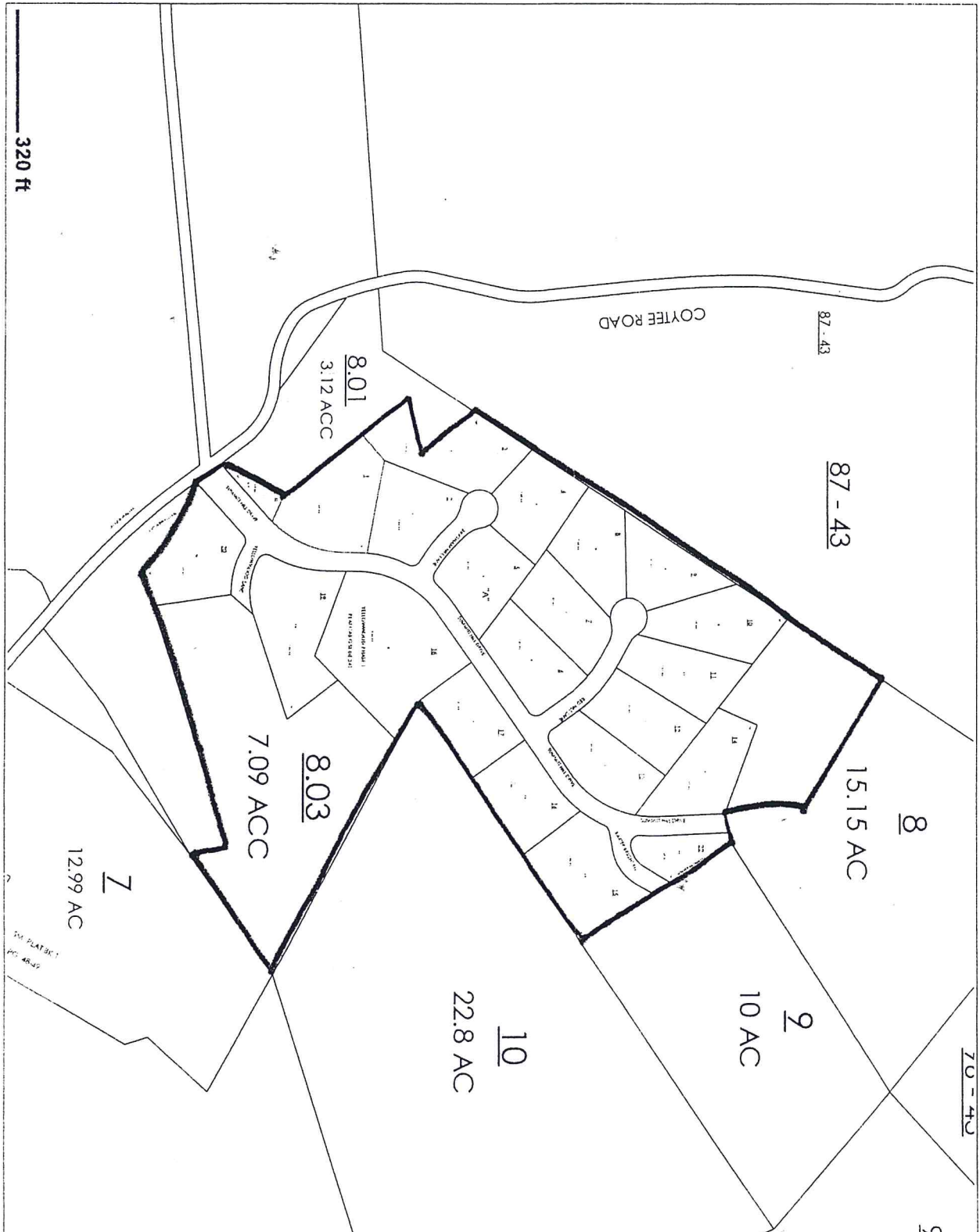


ATTEST: SECRETARY LOUDON COUNTY
REGIONAL PLANNING COMMISSION

Dated: August 19, 2014

FILE # [14-06-39-RZ-CO]

Rezone approximately 38.1 acres from A-2 (Rural Residential District) to R-1/PUD (Suburban Residential District/Planned Unit Development, 1.5 units per acre), located on Coytee Rd, River Cove Subdivision (Yellow Wood Subdivision), Phase I, referenced on Tax Map 51B, Group A, Parcels 1.00-20.00, 22.00, 8.03, and part of 8.00, 3rd Legislative District
Owner: Stewart and Deborah Rossi File #14-06-39-RZ-CO



RESOLUTION

A RESOLUTION AMENDING THE ZONING MAP OF LOUDON COUNTY, TENNESSEE, PURSUANT TO CHAPTER SEVEN, §13-7-105 OF THE TENNESSEE CODE ANNOTATED, TO REZONE APPROXIMATELY 16.3 ACRES FROM A-1 (AGRICULTURAL DISTRICT) TO C-2 (GENERAL COMMERCIAL DISTRICT). REFERENCED BY: TAX MAP 2, PARCEL 92.00 LOCATED ON BUTTERMILK RD. AND PAW PAW PLAINS RD., SITUATED IN THE 5TH LEGISLATIVE DISTRICT

WHEREAS, the Loudon County Commission, in accordance with Chapter Seven, §13-7-105 of the Tennessee Code Annotated, may from time to time, amend the number, shape, boundary, area or any regulation of or within any district or districts, or any other provision of any zoning resolution, and

WHEREAS, the Regional Planning Commission has forwarded a recommendation regarding the amendment to the Zoning Map of Loudon County, Tennessee,

WHEREAS, a notice of public hearing and a description of the resolution appeared in the Loudon County News Herald on September 17, 2014 consistent with the provisions of Tennessee Code Annotated, §13-7-105, and

NOW, THEREFORE, BE IT RESOLVED by the Loudon County Commission that the Zoning Map of Loudon County, Tennessee be amended as follows:

Located on Buttermilk Rd. and Paw Paw Plains Rd. situated in the 5th Legislative District, referenced by Tax Map 2, Parcel 92.00 be rezoned from A-1 (Agricultural District) to C-2 (General Commercial District) as shown on the attached map; said map being part of this Resolution.

BE IT FINALLY RESOLVED, that this Resolution shall take effect immediately, the public welfare requiring it.

ATTEST
CHAIRMAN

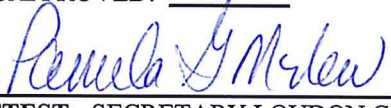
LOUDON COUNTY
DATE: _____

APPROVED: LOUDON COUNTY MAYOR

The votes on the question of approval of this Resolution by the Planning Commission are as follows:

APPROVED: 10-0

DISAPPROVED: _____



ATTEST: SECRETARY LOUDON COUNTY
REGIONAL PLANNING COMMISSION
Dated: August 19, 2014

FILE # [14-07-43-RZ-CO]

