

# **LOUDON COUNTY COMMISSION**

**December 6, 2010**

**6:00 pm**

**Courthouse Annex**

## **PUBLIC HEARING**

- 1. Loudon County Planning and Codes Director - Russ Newman**
  - A. A Resolution Amending the Zoning Map of Loudon County, Tennessee, pursuant to Chapter Seven, §13-7-105 of the Tennessee Code Annotated, to Rezone Approximately 29.5 Acres from R-1 (Suburban-Residential) to R-1 (Suburban-Residential) with a PUD Overlay (Planned Unit Development) for 2.6 Units/Acre. Referenced by: Tax Map 10, Parcel 253.00 Located on Town Creek Road East.**

## **REGULAR MEETING**

- 1. Opening of Meeting, Pledge of Allegiance, Invocation**
- 2. Roll Call**
- 3. Adoption of the Agenda - December 6, 2010**
- 4. Reading and Acceptance of November 1, 2010 Commission Minutes.**
- 5. This is the time for any visitor or delegation to come forward and state the business for which he/she may wish to address concerning any item of interest on the planned agenda.**
- 6. Reports of County Officials, Departments and Committees:**
  - A. Loudon County Mayor - Estelle Herron**
    1. Discussion of Requirement for an Airport Authority - Ron Hammontree
    2. Request Consideration of Approving Boards/Committees Appointments for the following:
      - a. Airport Authority
      - b. Visitor's Bureau
      - c. Chamber of Commerce Board of Directors

**B. Loudon County Planning and Codes Director - Russ Newman**

1. A Resolution Amending the Zoning Map of Loudon County, Tennessee, pursuant to Chapter Seven, §13-7-105 of the Tennessee Code Annotated, to Rezone Approximately 29.5 Acres from R-1 (Suburban-Residential) to R-1 (Suburban-Residential) with a PUD Overlay (Planned Unit Development) for 2.6 Units/Acre. Referenced by: Tax Map 10, Parcel 253.00 Located on Town Creek Road East.
2. Request Consideration of Approval of the Loudon County Water Quality Buffer Resolution.

**C. Loudon County Budget Director - Tracy Blair**

1. Consideration of a Recommendation to Approve Acceptance of a \$13,000. Byrne/JAG Grant for video arraignment equipment - no matching funds.
2. Consideration of a Recommendation to Approve Amendments in the Following Funds:
  - a. Highway Department Fund 131
  - b. General Capital Projects Fund 171
3. Consideration of a Recommendation to Approve Increasing the Sheriff's Department Vehicle Budget by \$250,000.

**D. Loudon County Commissioner - David Meers**

1. Election of Bonds and Notaries
7. **This is the time for any visitor or delegation to come forward and state the business for which he/she may wish to address concerning any items not on the planned agenda.**
8. **Adjournment**

# LOUDON COUNTY COMMISSION

STATE OF TENNESSEE

COUNTY OF LOUDON

November 1, 2010

6:00 PM

**DRAFT**

## PUBLIC HEARING

(1) Loudon County Planning and Codes Director – Russ Newman

Public  
Hearing

A Resolution Amending the Zoning Map of Loudon County, Tennessee, pursuant to Chapter Seven, §13-7-105 of the Tennessee Code Annotated, to Rezone Approximately 17.4 Acres from A-1 (Agriculture-Forestry) to C-2 (General Commercial), Referenced by: Tax Map 44, Parcel(s) 61.28, 61.29, 61.30, Located on Highway 321 at Friendsville Road, 3<sup>rd</sup> Legislative District.

## REGULAR MEETING

(2) **BE IT REMEMBERED** that the Board of Commissioners of Loudon County convened in regular session in Loudon, Tennessee on the 1st day of November, 2010.  
The **Honorable Roy Bledsoe** called the meeting to order.

Opening  
of Meeting

**Commissioner Meers** opened the County Commission Meeting, led the Pledge of Allegiance to the Flag of the United States of America and gave the invocation.

(3) Present were the following Commissioners: **Jenkins, Meers, Maples, Shaver, Franke, Bledsoe, Duff, Yarbrough, Harrelson, and Miller: (10)**

Roll Call

The following Commissioners were **Absent: (0)**  
Thereupon **Chairman Bledsoe** announced the presence of a quorum.  
Present was the **Honorable Mayor Estelle Herron**.

(4) **Chairman Bledsoe** requested that the November 1, 2010 Agenda be adopted.  
**Commissioner Meers** requested moving his Item C. to Item F. on the Agenda to allow time for representatives of the Lions Club to arrive.  
A **motion** was made by **Commissioner Franke** with a second by **Commissioner Maples** to adopt the Agenda as amended.  
Upon voice vote the motion **Passed** unanimously.

Agenda  
Adopted  
As Amended

(5) **Chairman Bledsoe** requested that the October 4, 2010 County Commission Meeting Minutes be approved and accepted.  
A **motion** was made by **Commissioner Miller** with a second by **Commissioner Jenkins** to approve and accept the minutes.  
Upon voice vote the motion **Passed** unanimously.

Minutes for  
October 4, 2010  
Approved

(6)  
Comments:  
Agenda Items

**Chairman Bledsoe** asked that any visitor wishing to address the Commission regarding items on the planned Agenda come forward.

**Pat Hunter** came forward to express her appreciation to the Commission for ensuring that their contact information was made available on the Loudon County Government Website and to praise the efforts of the new Knox County Mayor, Tim Burchett, who is moving aggressively to cut unnecessary spending from his county's budget. She also expressed concern about several of the budget amendment line items that will be voted on tonight. The items were for stationary and business cards for Commissioners – she suggested they purchase these from their compensation; a Thanksgiving luncheon for County employees; and new furniture for the Mayor's Office. She felt that these were expenses the county cannot afford given the current budget situation and more urgent funding requirements for the schools. She praised **Commissioner Shaver** for his comments at the Budget Committee Meeting objecting to these expenditures.

**Richard Truitt** came forward to praise the efforts of Mayor Burchett and to also raise objections to the budget expenditures for the purchase of new furniture for the Mayor's Office and the Thanksgiving luncheon for County employees, suggesting a pitch-in luncheon instead.

**Commissioner Maples** echoed praise for the efforts of Mayor Burchett and stated that she agreed with the above comments regarding the budget.

(7)  
2010 Code  
Of Ethics  
Policy  
Approved

**Estelle Herron, Loudon County Mayor**, requested discussion and possible action on the following items:

1. Consideration of Approving the 2010 Policy – Code of Ethics for the Loudon County, Tennessee Government.

A motion was made by **Commissioner Shaver** with a second by **Commissioner Franke** to approve this Policy.

Upon voice vote the motion **Passed** unanimously.

**Exhibit 110110-A**

(8)  
Cody Bengel  
Day  
Approved

2. Consideration of Approving a Proclamation Designating October 23, 2010 as Cody Bengel Day on the occasion of his reaching the highest rank of Eagle Scout in the Boy Scouts of America.

**Exhibit 110110-B**

(9)  
Loudon County  
School Bus  
Driver  
Appreciation  
Days Approved

3. Consideration of Approving a Proclamation Designating October 26<sup>th</sup> and October 27<sup>th</sup>, 2010 as Loudon County School Bus Driver Appreciation Days.

A motion was made by **Commissioner Miller** with a second by **Commissioner Yarbrough** to approve both these Proclamations.

Upon voice vote the motion **Passed** unanimously.

**Exhibit 110110-C**

**Loudon County Planning and Codes Director, Russ Newman**, requested consideration and possible action on the following item:

**(10)**  
**Rezoning**  
**Resolution**  
**Approval Denied**  
**Pending**  
**Further**  
**Investigation**

1. A Resolution Amending the Zoning Map of Loudon County, Tennessee, pursuant to Chapter Seven, §13-7-105 of the Tennessee Code Annotated, to Rezone Approximately 17.4 Acres from A-1 (Agriculture-Forestry) to C-2 (General Commercial), Referenced by: Tax Map 44, Parcel(s) 61.28, 61.29, 61.30, Located on Highway 321 at Friendsville Road, 3<sup>rd</sup> Legislative District.

A **motion** was made by **Commissioner Franke** with a second by **Commissioner Shaver** to recommend not approving this rezoning resolution at this time but to go back and revisit the Land Use Plan before considering approval of this request. Upon voice vote the motion to deny approval at this time **Passed** unanimously.  
**Resolution 110110-D**

**Loudon County Purchasing Director, Leo Bradshaw**, requested consideration and possible action on the following items:

**(11)**  
**Sale of**  
**Surplus**  
**Equipment**  
**Approved**

1. Request Consideration of Approving a Recommendation for the Sale of Surplus Highway Department Equipment, Sheriff's Department Vehicles, and a County Vehicle.

A **motion** was made by **Commissioner Maples** with a second by **Commissioner Meers** to approve this recommendation.  
Upon roll call vote the following Commissioners voted **Aye: Meers, Maples, Shaver, Franke, Bledsoe, Duff, Yarbrough, Harrelson, Miller, and Jenkins: (10)**  
The following Commissioners voted **Nay: (0)**  
The following Commissioners were **Absent: (0)**  
Thereupon the Chairman announced the motion **Passed: (10, 0, 0)**

**(12)**  
**Contract for**  
**County**  
**Ambulance**  
**Service**  
**Approved**

2. Request Consideration of Approving a Recommendation for a Five-year Service Contract between Loudon County and Rural Metro to Provide Ambulance Services to the County.
- A **motion** was made by **Commissioner Meers** with a second by **Commissioner Shaver** to approve this recommendation.  
Upon roll call vote the following Commissioners voted **Aye: Maples, Shaver, Franke, Bledsoe, Duff, Yarbrough, Harrelson, Miller, Jenkins, and Meers: (10)**  
The following Commissioners voted **Nay: (0)**  
The following Commissioners were **Absent: (0)**  
Thereupon the Chairman announced the motion **Passed: (10, 0, 0)**

**Loudon County Budget Director, Tracy Blair**, requested consideration and possible action on the following items:

**(13)**  
**Homeland**  
**Security**  
**Grant**  
**Approved**

1. Consideration of a Recommendation to Approve Application/Acceptance of a \$89,225.28 Homeland Security Grant; no matching funds.  
A **motion** was made by **Commissioner Jenkins** with a second by **Commissioner Franke** to approve this recommendation.  
Upon roll call vote the following Commissioners voted **Aye: Shaver, Franke, Bledsoe, Duff, Yarbrough, Harrelson, Miller, Jenkins, Meers, and Maples: (10)**  
The following Commissioners voted **Nay: (0)**  
The following Commissioners were **Absent: (0)**  
Thereupon the Chairman announced the motion **Passed: (10, 0, 0)**

**(14)**  
**Governor's**  
**Highway**  
**Safety**  
**Grant**  
**Approved**

2. Consideration of a Recommendation to Approve Application/Acceptance of a \$5,000.00 Governor's Highway Safety Office Grant; no matching funds.  
A **motion** was made by **Commissioner Franke** with a second by **Commissioner Meers** to approve this recommendation.  
Upon roll call vote the following Commissioners voted **Aye: Franke, Bledsoe, Duff, Yarbrough, Harrelson, Miller, Jenkins, Meers, Maples, and Shaver: (10)**  
The following Commissioners voted **Nay: (0)**  
The following Commissioners were **Absent: (0)**  
Thereupon the Chairman announced the motion **Passed: (10, 0, 0)**

**(15)**  
**Project**  
**Lifesaver**  
**Grant**  
**Approved**

3. Consideration of a Recommendation to Approve Application/Acceptance of a Project Lifesaver Grant for equipment.  
A **motion** was made by **Commissioner Miller** with a second by **Commissioner Duff** to approve this recommendation.  
Upon roll call vote the following Commissioners voted **Aye: Bledsoe, Duff, Yarbrough, Harrelson, Miller, Jenkins, Meers, Maples, Shaver, and Franke: (10)**  
The following Commissioners voted **Nay: (0)**  
The following Commissioners were **Absent: (0)**  
Thereupon the Chairman announced the motion **Passed: (10, 0, 0)**

**(16)**  
**Donation**  
**To Project**  
**Lifesaver**  
**Approved**

4. Consideration of a Recommendation to Approve Acceptance of a \$500.00 Donation to Project Lifesaver.  
A **motion** was made by **Commissioner Duff** with a second by **Commissioner Meers** to approve this recommendation.  
Upon roll call vote the following Commissioners voted **Aye: Duff, Yarbrough, Harrelson, Miller, Jenkins, Meers, Maples, Shaver, Franke, and Bledsoe: (10)**  
The following Commissioners voted **Nay: (0)**  
The following Commissioners were **Absent: (0)**  
Thereupon the Chairman announced the motion **Passed: (10, 0, 0)**

(17)  
Acceptance  
of Soil  
Conservation  
District  
Supplement  
Approved

5. Consideration of Recommending Acceptance of \$2,000.00 from the Soil Conservation District to Supplement the District Secretary's Wage  
A **motion** was made by **Commissioner Franke** with a second by **Commissioner Maples** to approve this recommendation.  
Upon roll call vote the following Commissioners voted **Aye: Yarbrough, Harrelson, Miller, Jenkins, Meers, Maples, Shaver, Franke, Bledsoe, and Duff: (10)**  
The following Commissioners voted **Nay: (0)**  
The following Commissioners were **Absent: (0)**  
Thereupon the Chairman announced the motion **Passed: (10, 0, 0)**

(18)  
Transfer  
of Funds  
For Cash  
Flow  
Approved

6. Consideration of a Recommendation to Approve a Resolution to Transfer Funds from General Purpose School Fund to Federal Projects Fund for Cash Flow.  
**Commissioner Miller** requested correction of a typographical error in the Resolution, which was noted, following which he made a **motion** with a second by **Commissioner Yarbrough** to approve the Resolution as corrected.  
Upon roll call vote the following Commissioners voted **Aye: Harrelson, Miller, Jenkins, Meers, Maples, Shaver, Franke, Bledsoe, Duff, and Yarbrough: (10)**  
The following Commissioners voted **Nay: (0)**  
The following Commissioners were **Absent: (0)**  
Thereupon the Chairman announced the motion **Passed: (10, 0, 0)**  
**Resolution 110110-E**

(19)  
Fund 101  
Approved

7. Consideration of a Recommendation to Approve Amendments in the Following Funds:

a. County General Fund 101  
**Commissioner Shaver** spoke in support of the comments of Ms. Hunter and Mr. Truitt regarding the expenditures in this Fund of \$4,500. for a Thanksgiving luncheon for County employees and \$5,000. for office furniture agreeing that these were not a wise use of County funds at this time and he would vote "no" on this recommendation for that reason.  
Discussion followed during which **Mayor Herron** stated that \$3,000. of the office furniture request were for her office and the request for the employees Thanksgiving luncheon was to show County employees they were appreciated in that she feels that their morale is extremely low at this time.  
**Chairman Bledsoe** asked if there was a motion.  
Further discussion included **Commissioner Franke** suggesting that the Commissioners and each of the Elected County Officials contribute \$100. or \$200. toward the employees luncheon instead.  
A **motion** was made by **Commissioner Miller** with a second by **Commissioner Franke** to accept the recommendation of the Budget Committee.  
Following further discussion, **Commissioner Shaver** made a **motion** with a second by **Commissioner Maples** to amend the original motion by removing from account 51300 Line Item 355, Travel and Employees Thanksgiving Luncheon and Line Item 711, Furniture and Fixtures.  
Discussion followed during which **Commissioner Meers** said that he agreed that each Commissioner should donate \$200. toward the employees luncheon.  
**Commissioner Miller** agreed that employees need appreciation and motivation.

**Chairman Bledsoe** asked **Chair Pro Tempore Maples** to take the chair so that he could make comments. He asked **Mayor Herron** if the money for these two line items had already been spent and she responded “no”.

**Chairwoman Maples** asked for a vote on amendment #1. **Commissioner Miller** reminded that, in preceding discussions, **Commissioner Jenkins** had said that he would like to offer an amendment also. Following discussion, **Commissioner Jenkins** made a **motion** with a second by **Commissioner Meers** to amend amendment #1 by removing the Line Item 711, Furniture and Fixtures but leaving the Line Item 355, Travel and Employees Thanksgiving Luncheon in the Fund.

Upon roll call vote on **Amendment #2** to remove the Line Item for Furniture and Fixtures but leave the Line Item for the County Employees Thanksgiving Luncheon in the Fund the following Commissioners voted **Aye: Jenkins, and Meers: (2)**

The following Commissioners voted **Nay: Miller, Maples, Shaver, Franke, Bledsoe, Duff, Yarbrough, and Harrelson: (8)**

The following Commissioners were **Absent: (0)**

Therefore the chairwoman announced the motion **Failed: (2, 8, 0)**

Upon roll call vote on **Amendment #1** to remove both Line Items from the Fund the following Commissioners voted **Aye: Jenkins, Meers, Maples, Shaver, Franke, Duff, and Yarbrough: (7)**

The following Commissioners voted **Nay: Bledsoe, Harrelson, and Miller: (3)**

The following Commissioners were **Absent: (0)**

Therefore the Chairwoman announced the motion **Passed: (7, 3, 0)**

Upon roll call vote on the **original motion as amended** the following Commissioners voted **Aye: Meers, Maples, Shaver, Franke, Bledsoe, Duff, Yarbrough, Harrelson, Miller, and Jenkins: (10)**

The following Commissioners voted **Nay: (0)**

Therefore the Chairwoman announced that the original motion as amended **Passed: (10, 0, 0)**

Discussion continued following voting with **Commissioner Franke** and **Commissioner Miller** supporting and Commission agreeing that donations from the Commissioners and Elected County Officials toward the County employees Thanksgiving luncheon were appropriate and that **Commissioner Meers** would collect the money and give it to the **Mayor**.

**Exhibit 110110-F**

**(20)**  
**Fund 115**  
**Approved**

b. Public Library Fund 115

A **motion** was made by **Commissioner Maples** with a second by **Commissioner Franke** to approve the recommendation of the Budget Committee.

Upon roll call vote the following Commissioners voted **Aye: Maples, Shaver, Franke, Bledsoe, Duff, Yarbrough, Harrelson, Miller, Jenkins, and Meers: (10)**

The following Commissioners voted **Nay: (0)**

The following Commissioners were **Absent: (0)**

Thereupon the Chairman announced the motion **Passed: (10, 0, 0)**

**Exhibit 110110-G**



(21)  
Fund 131  
Approved

c. Highway Fund 131

A motion was made by **Commissioner Jenkins** with a second by **Commissioner Miller** to approve the recommendation of the Budget Committee.

Upon roll call vote the following Commissioners voted **Aye: Shaver, Franke, Bledsoe, Duff, Yarbrough, Harrelson, Miller, Jenkins, Meers, and Maples: (10)**  
The following Commissioners voted **Nay: (0)**

The following Commissioners were **Absent: (0)**

Thereupon the Chairman announced the motion **Passed: (10, 0, 0)**

**Exhibit 110110-H**

(22)  
Comptroller's  
Letter  
Distributed

**Budget Director Blair** requested that records reflect the distribution of a Letter from the State of Tennessee Comptroller providing approval for the issuance of tax and revenue anticipation notes for the Public Library Fund.

**Exhibit 110110-I**

(23)  
Summary  
Financial  
Statements  
Distributed

**Budget Director Blair** requested that records reflect that the Summary Financial Statements for the month of October 2010 have been distributed.

**Exhibit 110110-J**

**Loudon County Commissioner, David Meers**, requested consideration and possible action on the following item:

(24)  
Loudon  
Lion's Club  
Day  
Approved

1. Request Consideration of Approving a Resolution Declaring November 19, 2010 as Loudon Lion's Club Day on the 75<sup>th</sup> Anniversary of their Service to the County.

A motion was made by **Commissioner Meers** with a second by **Commissioner Maples** to approve this Resolution.

Upon voice vote the motion **Passed** unanimously.

**Resolution 110110-K**

(25)  
Notaries  
Approved

A motion was made by **Commissioner Meers** with a second by **Commissioner Jenkins** to approve the following **Notaries**:

*Teresa Wallace; Joyce Ann Phillips; Mary E. Williams; Toby Jones Brewster; and Becky Duncil.*

Upon voice vote the motion **Passed** unanimously.

**Exhibit 110110-L**

**(26)**  
**Comments:**  
**Non-Agenda**  
**Items**

**Chairman Bledsoe** asked that any visitor wishing to address the Commission regarding items not on the Agenda come forward.

**Richard Truitt** spoke and offered to match the contribution of each Commissioner toward the County Employees' Thanksgiving luncheon and **Commissioner Meers** responded that each would contribute \$200. Mr. Truitt commented on the voting procedures used at this meeting and stated that as he understands the Rules of Order the voting was done correctly. He further commented on **Commissioner Yarbrough's** comments at a recent Budget Committee meeting and **Commissioner Yarbrough** responded by requesting a copy of the CD that Mr. Truitt had of that meeting. **Commissioner Miller** spoke in response to Mr. Truitt's comments regarding Tellico Village residents stating that not all the residents in the Village are "rich" and that the voters had spoken on wheel tax and sales tax increases and these were not being considered as possible ways to increase revenue.

**Commissioner Franke** asked the **Mayor** about the upcoming Ethics meeting and the Mayor responded that the meeting was on Monday. She also stated that this would count toward UT certification for those who needed it.

**Commissioner Meers** asked the **Mayor** if she needed the Thanksgiving Luncheon money at the Ethics meeting and she stated that she didn't need the money until after the luncheon on the 19<sup>th</sup>.

**Commissioner Duff** described two handouts he had distributed to each Commissioner: The TCSA 2011 Legislative Platform Listing and the 2009-2010 Capital Analysis document. **Commissioner Maples** thanked **Commissioner Duff** for distributing the documents.

**Commissioner Miller** asked if any of the attendees to the recent retreat, which he was unable to participate in, attended the BEP Training Session and **Commissioner Yarbrough** provided comments on the session. **Commissioner Franke** stated that he was preparing information on the Retreat and would be sharing that as soon as it was completed.

**(27)**  
**Mayor's**  
**Comments:**

**Mayor Herron** announced that at 6 p.m. on November 8, 2010 there will be a Meeting on Ethics, Open Records, and the Sunshine Law and all the Cities (Lenoir City, Loudon, Greenback and Philadelphia) Officials and all the Elected Officials are invited to attend. It will be held at the Courthouse Annex Building at 6 p.m. She also announced that the Employees Thanksgiving Luncheon would be on Friday, November 19<sup>th</sup> from 11a.m.-1 p.m. at the Highway Department and she invited the Commissioners to attend.

**Chairman Bledsoe** asked if there were any further comments and, upon receiving none, he asked for a motion to adjourn.

**(28)**  
**Adjournment**

There being no further business, a **motion** being duly made and seconded, the November 1, 2010 County Commission Meeting stood adjourned at 7:20 p.m.

---

**CHAIRMAN**

**ATTEST:**

---

**COUNTY CLERK**

---

**COUNTY MAYOR**

LOUDON COUNTY COMMISSION

RESOLUTION 120610

RESOLUTION APPROVING OR ACKNOWLEDGING BOARD OR  
COMMITTEE APPOINTMENT BY COUNTY MAYOR

*WHEREAS*, by statute, and/or intergovernmental agreement and/or County Procedural Regulations, the County Mayor has authority to make certain committee and board appointments; and

*WHEREAS*, an appointment is necessary and desirable at this time; and

*WHEREAS*, the County Mayor appoints the following as a member of

LOUDON COUNTY  
AIRPORT AUTHORITY

<u>Appointee</u>		<u>Term Expiration</u>
David Ferguson	1 Year	August 31, 2011
Charles Wells	2 Years	August 31, 2012
John Manikas	3 Years	August 31, 2013
Clayton Pangle	4 Years	August 31, 2014
Bart Iddins	5 Years	August 31, 2015

*NOW, THEREFORE, BE IT RESOLVED* that the County Commission meeting in regular session assembled this 6th day of December, 2010 hereby approves and acknowledges (as appropriate), the said appointment.

\_\_\_\_\_  
COUNTY CHAIRMAN

ATTEST:

\_\_\_\_\_  
COUNTY CLERK

\_\_\_\_\_  
COUNTY MAYOR

**LOUDON COUNTY COMMISSION**

**RESOLUTION**

**RESOLUTION APPROVING OR ACKNOWLEDGING BOARD OR  
COMMITTEE APPOINTMENT BY COUNTY MAYOR**

*WHEREAS*, by statute, and/or intergovernmental agreement and/or County Procedural Regulations, the County Mayor has authority to make certain committee and board appointments; and

*WHEREAS*, an appointment is necessary and/or desirable at this time; and

*WHEREAS*, the County Mayor appoints the following as a member of the

**LOUDON COUNTY CHAMBER OF COMMERCE  
BOARD OF DIRECTORS**

Appointee  
Commissioner Harold Duff

Term Expiration  
December 2011

*NOW, THEREFORE, BE IT RESOLVED* that the Loudon County Commission meeting in regular session assembled this 6th day of December, 2010 hereby approves and acknowledges (as appropriate), the said appointment.

\_\_\_\_\_  
COUNTY CHAIRMAN

ATTEST:

\_\_\_\_\_  
COUNTY CLERK

\_\_\_\_\_  
COUNTY MAYOR

**LOUDON COUNTY COMMISSION**

**RESOLUTION**

**RESOLUTION APPROVING OR ACKNOWLEDGING BOARD OR  
COMMITTEE APPOINTMENT BY COUNTY MAYOR**

*WHEREAS*, by statute, and/or intergovernmental agreement and/or County Procedural Regulations, the County Mayor has authority to make certain committee and board appointments; and

*WHEREAS*, an appointment is necessary and/or desirable at this time; and

*WHEREAS*, the County Mayor appoints the following as a member of the

**LOUDON COUNTY VISITORS BUREAU BOARD**

Appointee  
**Commissioner Bob Franke**

Term Expiration  
**December 31, 2011**

*NOW, THEREFORE, BE IT RESOLVED* that the Loudon County Commission meeting in regular session assembled this 6th day of December, 2010, hereby approves and acknowledges (as appropriate), the said appointment.

\_\_\_\_\_  
COUNTY CHAIRMAN

ATTEST:

\_\_\_\_\_  
COUNTY CLERK

\_\_\_\_\_  
COUNTY MAYOR

RESOLUTION NO. \_\_\_\_\_

**A RESOLUTION AMENDING THE ZONING MAP OF LOUDON COUNTY, TENNESSEE, PURSUANT TO CHAPTER SEVEN, §13-7-105 OF THE TENNESSEE CODE ANNOTATED, TO REZONE APPROXIMATELY 29.5 ACRES FROM R-1 (SUBURBAN-RESIDENTIAL) TO R-1 (SUBURBAN-RESIDENTIAL) WITH A PUD OVERLAY (PLANNED UNIT DEVELOPMENT) FOR 2.6 UNITS/ACRE. REFERENCED BY: TAX MAP 10, PARCEL 253.00 LOCATED ON TOWN CREEK ROAD EAST.**

**WHEREAS**, the Loudon County Commission, in accordance with Chapter Seven, §13-7-105 of the Tennessee Code Annotated, may from time to time, amend the number, shape, boundary, area or any regulation of or within any district or districts, or any other provision of any zoning resolution, and

**WHEREAS**, the Regional Planning Commission has forwarded a recommendation regarding the amendment to the Zoning Map of Loudon County, Tennessee,

**WHEREAS**, a notice of public hearing and a description of the resolution appeared in the Loudon County News Herald on October 21/22 consistent with the provisions of Tennessee Code Annotated, §13-7-105,

**NOW, THEREFORE, BE IT RESOLVED** by the Loudon County Commission that the Zoning Map of Loudon County, Tennessee be amended as follows:

Located on Town Creek Road East, situated in the 5<sup>th</sup> Legislative District, referenced by Tax Map 10, Parcel 253.00 be rezoned from R-1 (Suburban-Residential) to R-1 (Suburban-Residential) with a PUD Overlay (Planned Unit Development) for 2.6 units/acre, as shown on the attached map; said map being part of this Resolution.

**BE IT FINALLY RESOLVED**, that this Resolution shall take effect immediately, the public welfare requiring it.

\_\_\_\_\_  
ATTEST

\_\_\_\_\_  
LOUDON COUNTY CHAIRMAN  
DATE: \_\_\_\_\_

\_\_\_\_\_  
APPROVED: LOUDON COUNTY MAYOR

The votes on the question of approval of this Resolution by the Planning Commission are as follows:

APPROVED: 10

DISAPPROVED: 0



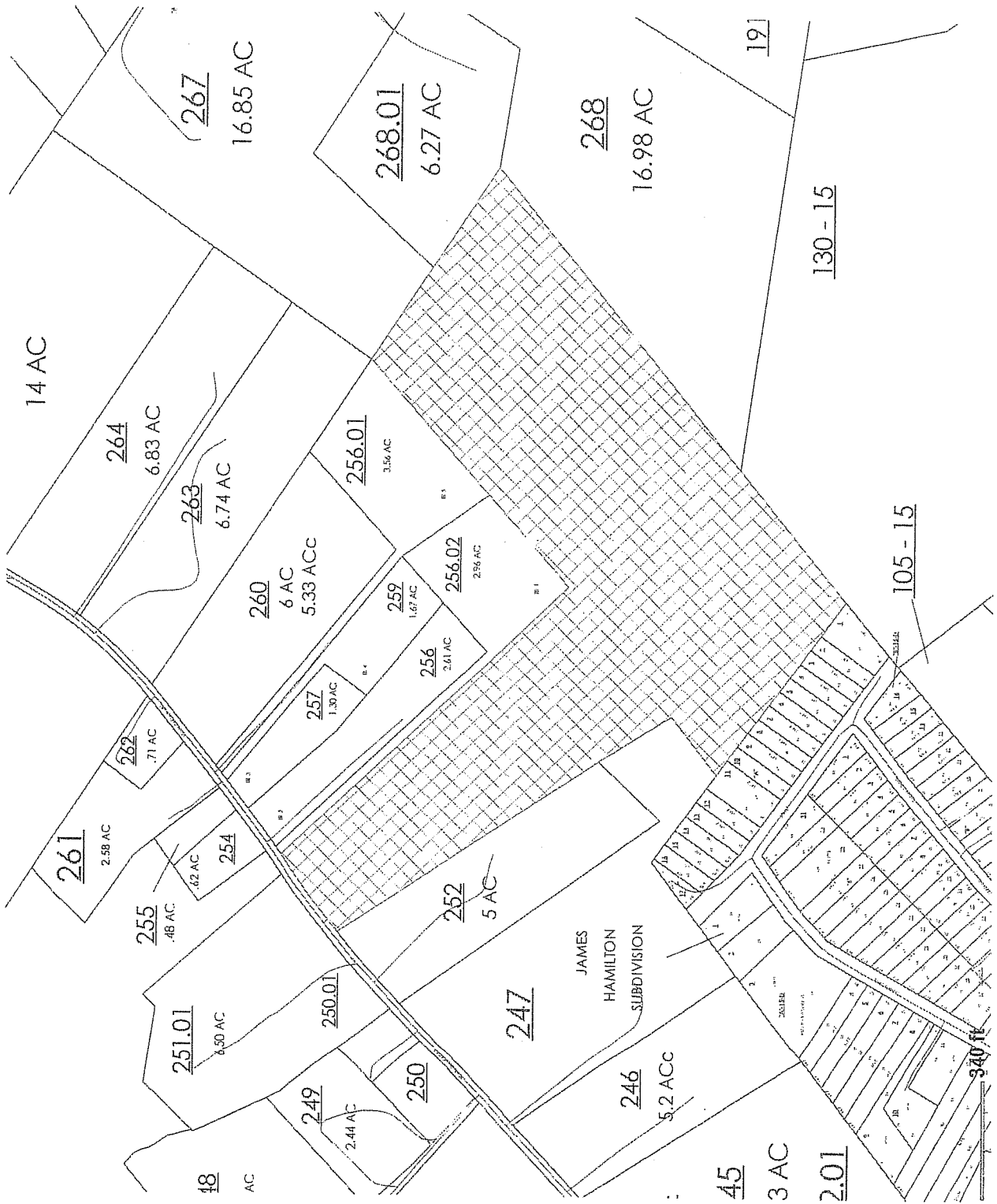
ATTEST: SECRETARY LOUDON COUNTY  
REGIONAL PLANNING COMMISSION

Dated: October 19, 2010

FILE # [10-08-65-RZ-CO]

RESOLUTION No. \_\_\_\_\_

REZONE APPROXIMATELY 29.5 ACRES FROM R-1 (SUBURBAN-RESIDENTIAL) TO R-1 (SUBURBAN-RESIDENTIAL) WITH A PUD OVERLAY (PLANNED UNIT DEVELOPMENT) FOR 2.6 UNITS/ACRE. REFERENCED BY: TAX MAP 10, PARCEL 253.00 LOCATED ON TOWN CREEK ROAD EAST.





RESOLUTION NO. \_\_\_\_\_

**A RESOLUTION TO ADOPT THE LOUDON COUNTY WATER QUALITY BUFFER RESOLUTION PURSUANT TO THE REQUIREMENTS OF LOUDON COUNTY'S NPDES PHASE II STORMWATER PERMIT ISSUED BY THE STATE OF TENNESSEE'S DEPARTMENT OF ENVIRONMENT AND CONSERVATION (TDEC) PURSUANT TO THE FEDERAL CLEAN WATER ACT OF 1977**

**WHEREAS**, the Federal Clean Water Act, 33 U.S.C. 1251 et seq., requires certain political entities, including Loudon County, TN, to implement stormwater management programs within prescribed time frames, and the Environmental Protection Agency, pursuant to this Act, has published rules for stormwater outfall permits; and

**WHEREAS**, Loudon County was issued a National Pollutant Discharge Elimination System (NPDES) Phase II permit in July, 2003, by the State of Tennessee pursuant to the Tennessee Water Quality Control Act of 1977 through the Tennessee Department of Environment and Conservation (TDEC) and is mandated to regulate the discharge of pollutants to the waters of the state; and

**WHEREAS**, the NPDES permit requires under section 4.2.5.1.3 and 4.2.5.1.4 that Loudon County develop and implement a set of requirements to establish, protect and maintain water quality buffers in areas of new development and redevelopment, and that Loudon County use an ordinance or other regulatory mechanism to address post-construction runoff from new development and redevelopment projects;

**NOW, THEREFORE, BE IT RESOLVED**, by the Loudon County Commission that the Loudon County Water Quality Buffer Resolution be adopted as follows:

LOUDON COUNTY WATER QUALITY BUFFER RESOLUTION

Section 1.	Statutory Authorization.
Section 2.	Title.
Section 3.	Purpose.
Section 4.	Definitions.
Section 5.	General Requirements for Water Quality Buffer.
Section 6.	Where the Water Quality Buffer Applies.
Section 7.	Water Quality Buffer Width Requirements.
Section 8.	Standards for Buffer Vegetation.
Section 9.	Activities Permitted Within the Water Quality Buffer.
Section 10.	Activities Prohibited Within the Water Quality Buffer.
Section 11.	Protection of the Water Quality Buffer.
Section 12.	Plats Prepared for Recording.
Section 13.	Conflicts With Other Regulations.
Section 14.	Enforcement, Violations and Penalties.
Section 15.	Appeals.

**Section 1. Statutory Authorization.**

Under the authority of the federal Clean Water Act of 1977, the United States Environmental Protection Agency (EPA) is specifically required to develop and oversee the National Pollutant Discharge Elimination System (NPDES) permit program which requires all communities operating a small municipal separate storm sewer system (MS4) to regulate the discharge of pollutants to the waters of the state. Under the authority of the Tennessee Water Quality Control Act of 1977 the Tennessee Department of Environment and Conservation (TDEC) has interpreted that this mandate includes the regulation of aquatic buffers. The Legislature of the State of Tennessee has in Tennessee Code Annotated, § 6-2-201, delegated the authority to local governmental units to adopt regulations designed to promote the public health, safety, and general welfare of its citizenry.

**Section 2. Title.**

This resolution shall be known as the Loudon County Water Quality Buffer Resolution.

**Section 3. Purpose.**

The purpose of a water quality buffer is to:

- a. Remove pollutants delivered in urban stormwater,
- b. Reduce erosion and control sedimentation,
- c. Protect, restore and maintain the chemical, physical and biological integrity of streams and their water resources,
- d. Protect public and private water supplies,
- e. Protect and stabilize stream banks,
- f. Protect channel banks from erosion and scour,
- g. Protect wetlands,
- h. Protect wildlife habitat, and
- i. Minimize the impact of floods.

**Section 4. Definitions.**

**Agriculture**-(1) The land, buildings and machinery used in the commercial production of farm products and nursery stock; (2) The activity carried on in connection with the commercial production of farm products and nursery stock; and (3) Recreational and educational activities on land used for the commercial production of farm products and nursery stock. As used in this definition of agriculture, the term “farm products” means forage and sod crops; grains and feed crops; dairy and dairy products; poultry and poultry products; livestock, including breeding and grazing; fruits; vegetables; flowers; seeds; grasses; forestry products; fish and other aquatic animals used for food; bees; equine; and all other plants and animals that produce food, feed, fiber or fur. As used in this definition of agriculture, the term “nursery stock” mean all trees, shrubs, or other plants, or parts of such trees, shrubs or other plants, grown or kept for, or capable of, propagation, distribution or sale on a commercial basis.

**Best Management Practices (BMPs)**-means schedules of activities, prohibitions of practices, maintenance procedures, and other management practices to prevent or reduce the pollution of waters of the state. BMPs also include treatment requirements, operating procedures, and practices to control runoff, spillage or leaks, sludge or waste disposal, or drainage from raw material storage.

**Buffer Enhancement Plan**-a plan showing the establishment and/or restoration of the water quality buffer. The plan may be included as part of a comprehensive site plan required under the County’s site plan requirements, a stormwater management plan, and/or a separate plan following the specifications of this resolution.

**Development**-any manmade change, involving construction or reconstruction, to improved or unimproved real estate, including but not limited to, buildings or other structures, mining, dredging, grading, clearing, paving, excavation, drilling operations, or other land disturbances.

**Easement**-a legally dedicated right-of-way for the purpose of managing and maintaining stormwater flow facilities or other utilities within specified boundaries.

**Erosion**-the wearing away of land by action of wind, water, ice, or gravity.

**Floodway**-the channel of a river or other watercourse and the adjacent land areas that must be reserved in order to discharge the base flood without cumulatively increasing the water surface elevation more than one (1) foot.

**Floodplain**-means any land area susceptible to flooding, which would have at least a one percent probability of flooding occurrence in any calendar year based on locally adopted flood plain maps.

**Impervious Surfaces**-those areas that prevent or impede the infiltration of stormwater into the soil as it entered in natural conditions prior to development. Common impervious areas include, but are not limited to, rooftops, sidewalks, walkways, patio areas, driveways, parking lots, storage areas, compacted gravel and soil surfaces, awnings and other fabric or plastic coverings.

**Land Disturbing Activity**-any activity on private or public land that may result in soil erosion and the movement of sediments. Land disturbing activities include, but are not limited to, development, re-development, demolition, construction, reconstruction, clearing, grading, filling, logging and/or tree chipping, haul roads associated with the development, and excavation. No activities undertaken as part of an “agricultural” operation defined above are considered a land disturbing activity.

**Lake or Pond**-an inland body of standing water.

**Native Vegetation**-plants indigenous to East Tennessee or the southeastern United States.

**NPDES**-National Pollutant Discharge Elimination System.

**Slope**-the degree of deviation of a surface from the horizontal, usually expressed in percent or degrees.

**Stormwater**-surface water resulting from rain, snow, or other form of precipitation, which is not absorbed into the soil and results in surface water flow and drainage.

**Stream**-means a surface water that is not a wet weather conveyance.

**Top of Bank**-the uppermost limit of an active stream channel, usually marked by a break in slope. Also known as stream bank.

**Total Maximum Daily Load (TMDL)**-a calculation of the maximum amount of a pollutant that a water body can receive and still meet water quality standards, and an allocation of that amount to the sources(s) of the pollutant as designated and/or defined by the Tennessee Department of Environment and Conservation (TDEC).

**Vegetation**-collection of plant life, including trees, shrubs, bushes, and grass.

**Watercourse**-a permanent or intermittent stream or other body of water, either natural or manmade, which gathers or carries surface water.

**Water Quality Buffer (WQB)**-an easement that encompasses land within buffer areas described in this resolution. The water quality buffer is intended to be composed of undisturbed vegetation including trees, shrubs, and herbaceous vegetation; enhanced or restored vegetation; or the re-establishment of vegetation bordering streams, ponds, wetlands, reservoirs, or lakes, which exists or is established to protect those water bodies.

**Wetlands**-areas that are inundated or saturated by surface water or groundwater at a frequency and duration sufficient to support, and that under normal circumstances does support, a prevalence of vegetation typically adapted for life in saturated soil conditions. Wetland determination shall be made by the U.S. Army Corps of Engineers, TDEC, and/or the Natural Resources Conservation Service, or a qualified professional that has been trained in the identification and delineation of wetland areas.

**Section 5. General Requirements for Water Quality Buffer.**

The water quality buffer shall be established, managed and maintained to protect the physical and ecological integrity of the buffered waterbody, reduce the potential for flooding, provide tree canopy, stabilize stream banks, and filter runoff from developed areas. Management of the water quality buffer includes specific limitations on alteration of the natural conditions as set forth in this resolution.

**Section 6. Where the Water Quality Buffer Applies.**

The water quality buffer requirements apply to all new development or changes to existing development that result in a land-disturbing activity of one (1) acre or greater and are located within Loudon County's MS4 permitted area. Within these areas measures must be taken to establish, protect and maintain water quality buffers along all streams, rivers, lakes, ponds and wetlands. Agricultural activities, as defined in this resolution, are exempt from the water quality buffer requirements.

**Section 7. Water Quality Buffer Width Requirements.**

The minimum width of the water quality buffer will depend on the size of the drainage area.

1. Drainage Areas Less Than 1 Square Mile

The minimum buffer width required is 30 feet, measured horizontally from the top of the bank.

2. Drainage Areas Greater Than 1 Square Mile

The minimum buffer width required is 60 feet, measured horizontally from the top of the bank.

Water quality buffers are not required around the perimeter of hydraulically disconnected ponds or ponds or wetlands that are designed and constructed for the purposes of stormwater quality treatment.

3. Density Compensation

Property owners will be provided a density credit based on the amount of developable land lost due to the buffer requirement. Developable land is defined as that portion of the buffer area remaining after the 100 year floodplain, wetlands, and steep slope areas (greater than 25%) are deducted. The density credit will be added to the developable part of the site. Calculations for the credit will be based on the zoning on the property. For example, if the property is zoned R-1, which allows 2 units per acre, and if the buffer requirement consumes 3 acres of developable land, the property owner will receive a credit of 6 units to be added to the density on the developable portion of the property.

**Section 8. Standards for Buffer Vegetation**

The water quality buffer should be a mature strip of undisturbed native vegetation, either existing or enhanced, containing natural vegetation and grasses that are native in origin.

If a waterbody does not have an established water quality buffer, then a water quality buffer enhancement plan shall be required. The plan will be submitted to the Loudon County stormwater administrator for approval and shall comply with the following:

1. All planting plans shall be drawn at a scale of not less than 1"=20' for small tracts and 1"=50' for large tracts on 24" x 36" sheets.
2. The planting plan may be submitted as part of a required site plan or plat.
3. The planting plan shall include a plant schedule which lists the number and common and botanical name(s) of all existing and proposed plantings. The plant schedule shall also list the height, spread, and where applicable, the caliper of all new plantings at the time of planting.
4. Stream banks must be planted with native vegetation that represents both woody (trees and shrubs) and herbaceous species. Density shall depend on the re-vegetation technique to be used and existing site conditions.
5. No trees shall be planted in a utility easement.
6. No species may comprise more than one third (1/3) of the total planted trees or shrubs.
7. Seedlings/trees must be guaranteed at a seventy-five percent (75%) survivorship rate.
8. Invasive species must be removed and managed.

**Section 9. Activities Permitted Within the Water Quality Buffer**

The following structures, practices, and activities are permitted within the water quality buffer:

1. Clearing or grubbing of existing vegetation subject to the approval of a buffer enhancement plan by the Loudon County Stormwater Administrator.
2. The limited use or application of pesticides and herbicides.
3. Cutting individual trees within the water quality buffer that are in danger of falling, causing damage to dwellings or other structures, causing blockage of the stream, standing in the path of an approved water, sanitary sewer, storm main; and/or the roots of a tree are penetrating or in danger of penetrating a sewer, water or storm drainage line at a joint or pipe connection. The root wad or stump should be left in place, where feasible, to maintain soil stability.
4. Infrastructure such as roads, bridges, storm drainage, stormwater management facilities that are appropriate for use in a riparian zone (e.g., wetlands, buffers), and utilities subject to the following standards:
  - a. The width should be the minimum width needed to allow for installation and maintenance.
  - b. Crossings shall be at an angle that minimizes clearing.
  - c. The minimum number of crossings should be used, with no more than 1 crossing every one thousand feet (1,000).
5. Paths and greenways, provided the design and location is approved by Loudon County.
6. Removal of vegetation that creates a traffic hazard or limits access to approved stream or utility crossings. Dense grass shall be used to revegetate these areas.
7. Bank stabilization, restoration and habitat improvement projects.
8. Disturbances required to establish and/or restore buffer areas in accordance with an approved buffer enhancement plan.

9. Pruning of native vegetation is allowed provided that the health and function of the vegetation is not compromised. Where the removal of nuisance vegetation results in a 50% reduction of the stream canopy then re-vegetation with native plants is required.
10. Other activities/uses that are approved by TDEC.

**Section 10. Activities Prohibited Within the Water Quality Buffer**

The following activities/uses are prohibited within the water quality buffer:

1. Storage of pesticides, herbicides, and fertilizers.
2. Use and application of fertilizers.
3. Parking lots.
4. New structures.
5. Vehicle storage and maintenance.
6. Waste storage.
7. Other manmade impervious surfaces.
8. Uses known to contribute pollutants to waterways.
9. Septic tanks and drain fields.
10. Hazardous or sanitary waste containment or landfills.
11. Mining.
12. Dumpster storage.
13. Grease bin storage.
14. Animal lots or kennels.
15. Stormwater detention/retention facilities
16. Other uses known to contribute pollutants to waterways.

**Section 11. Protection of the Water Quality Buffer**

All water quality buffers must be protected during construction/development activities. Prior to the initiation of land disturbing activities, construction staking must be done to clearly label the perimeter of the water quality buffer. Silt fence may be used to ensure the visibility of the water quality buffer. The completed staking and labeling must be approved by the Loudon County Stormwater Administrator prior to issuance of the grading permit.

Water quality buffers cannot be encroached upon or disturbed during project construction, unless they are being established, restored, or enhanced in accordance with an approved buffer enhancement plan.

Upon completion of construction, all areas of the water quality buffer, including stream banks, must be left in a stabilized condition. No actively eroding bare or unstable stream banks shall remain. The placement of riprap and other hard armor is allowed only when vegetative alternatives are not feasible.

In order to provide for the long-term protection and maintenance of the water quality buffer, Loudon County shall require that the water quality buffer be protected in perpetuity by placing the buffer in a permanent easement that is recorded with the property's deed or by plat. If the easement is not publicly owned, the easement should be held by one of the following non-governmental entities:

1. Land Trust, Land Management Company, Utility. A viable entity shall provide monitoring and oversight to ensure the perpetual protection of the buffer. The organization shall have the legal authority to accept and maintain such easements, be bona fide and in perpetual existence; and have conveyance instruments that allow for the transfer of the easement in the event the organization cannot carry-out its function.
2. Homeowners' Association (HOA). An HOA may own the buffer easement provided membership in the HOA is required of all property owners, it has the authority to place

liens on property for the non-payment of dues, and it assumes the responsibility for protecting, monitoring and maintaining the area as a conservation easement.

3. Property Owner: If neither of the non-governmental entities above is able to provide perpetual protection of the buffer easement, then the property owner must assume responsibility for maintenance and protection.

**Section 12. Plats Prepared for Recording.**

All site plans and plats prepared for recording shall:

1. Show the extent of any water quality buffer on the subject property by metes and bounds and be labeled “water quality buffer”.
2. Provide a note with reference to the water quality buffer stating that there shall be no clearing, grading, construction or disturbance of vegetation except as permitted by the Loudon County Stormwater Administrator.
3. Have permanent boundary markers with signage designating the water quality buffer. Markers with signage shall be installed prior to recording the final plat.

**Section 13. Conflict With Other Regulations.**

Where the requirements and standards of this resolution conflict with other local, state or federal laws or regulations, the more restrictive regulation shall apply.

**Section 14. Enforcement, Violations and Penalties**

It shall be unlawful for any person, corporation or entity to violate or fail to comply with the provisions of this resolution. Any person, corporation or entity that violates the provisions of this resolution shall be subject to the enforcement and penalty provisions of Loudon County’s Stormwater Resolution (091205-S).

**Section 15. Appeals**

Any person, corporation or entity aggrieved by imposition of a penalty or requirement of this regulation shall have the right to appeal pursuant to Section 11. Appeals of the Loudon County Stormwater Resolution (091205-S).

**BE IT FINALLY RESOLVED**, that this Resolution shall take effect immediately, the public welfare requiring it.

\_\_\_\_\_  
ATTEST

\_\_\_\_\_  
LOUDON COUNTY CHAIRMAN

\_\_\_\_\_  
APPROVED: LOUDON COUNTY MAYOR

\_\_\_\_\_  
DATE

Loudon County  
Highway Fund 131  
Fiscal Year Ending June 30, 2011

	A	B	C	D	E	F	G	H
1			<b>Highway Dept 131</b>					
2	<b>Account</b>		11/14/2010 18:28	<b>2010-2011</b>	<b>2010-2011</b>	<b>Approved</b>	<b>Proposed</b>	<b>Proposed</b>
3	<b>Number</b>			<b>Org Bgt</b>	<b>Amds</b>	<b>Amded Bgt</b>	<b>Amds</b>	<b>Amded Budget</b>
4								
5	<b>Revenue</b>							
6								
7	<b>40000</b>		<b>Local Taxes</b>					
8								
9	<i>40100</i>		<i>County Property Taxes</i>					
10	40110		Current Property Tax	538,157		538,157		538,157
11	40120		Trustee's Collections Prior Year	6,500		6,500		6,500
12	40125		Trustee's Collections-Bankruptcy	0		0		0
13	40130		Clerk & Master's Collections Prior Year	3,000		3,000		3,000
14	40140		Interest and Penalty	1,300		1,300		1,300
15								
16			<b>Total County Property Taxes</b>	548,957	0	548,957	0	548,957
17								
18	<i>40200</i>		<i>County Local Option Taxes</i>					
19	40280		Mineral Severance Tax	90,000		90,000		90,000
20								
21			<b>Total County Local Option Taxes</b>	90,000	0	90,000	0	90,000
22								
23	<i>40300</i>		<i>Statutory Local Taxes</i>					
24	40320		Bank Excise Tax	3,000		3,000		3,000
25	40390		Other Statutory Local Taxes	600		600		600
26								
27			<b>Total Statutory Local Taxes</b>	3,600	0	3,600	0	3,600
28								
29	<b>Total Local Taxes</b>			<b>642,557</b>	<b>0</b>	<b>642,557</b>	<b>0</b>	<b>642,557</b>
30								
31								
32								



Loudon County  
Highway Fund 131  
Fiscal Year Ending June 30, 2011

	A	B	C	D	E	F	G	H
1			<b>Highway Dept 131</b>					
2	<b>Account</b>		11/14/2010 18:28	<b>2010-2011</b>	<b>2010-2011</b>	<b>Approved</b>	<b>Proposed</b>	<b>Proposed</b>
3	<b>Number</b>			<b>Org Bgt</b>	<b>Amds</b>	<b>Amded Bgt</b>	<b>Amds</b>	<b>Amded Budget</b>
4								
33	<b>44000</b>		<b>Other Local Revenues</b>					
34								
35	<i>44100</i>		<i>Recurring Items</i>					
36	44130		Sale of Materials & Supplies	6,000		6,000		6,000
37	44160-RET		Retirees Life Insurance PMTS	663				
38	44160-RET		Retirees Medical Insurance PMTS	4,918				
39	44160-RET		Retirees Dental Insurance PMTS	1,692				
40	44170		Miscellaneous	3,000		3,000		3,000
41	44520		Insurance Recovery	0		0		0
42	44540		Sale of Property	0		0		0
43								
44			<b>Total Investments</b>	16,273	0	16,273	0	16,273
45								
46								
47								
48								
49								
50								
51	<b>Total Other Local Revenues</b>			<b>16,273</b>	<b>0</b>	<b>16,273</b>	<b>0</b>	<b>16,273</b>

Loudon County  
Highway Fund 131  
Fiscal Year Ending June 30, 2011

	A	B	C	D	E	F	G	H
1			<b>Highway Dept 131</b>					
2	<b>Account</b>		11/14/2010 18:28	<b>2010-2011</b>	<b>2010-2011</b>	<b>Approved</b>	<b>Proposed</b>	<b>Proposed</b>
3	<b>Number</b>			<b>Org Bgt</b>	<b>Amds</b>	<b>Amded Bgt</b>	<b>Amds</b>	<b>Amded Budget</b>
4								
52								
53	<b>46000</b>		<b>State of Tennessee</b>					
54								
55	46400		<i>Public Works Grants</i>					
56	46410		Bridge Program	329,066		329,066		329,066
57	46420		State Aid Program	531,277		531,277		531,277
58								
59			<b>Total Public Works Grants</b>	860,343	0	860,343	0	860,343
60								
61								
62	46800		<i>Other State Revenues</i>					
63	46920		Gasoline & Motor Fuel Tax	1,506,107		1,506,107		1,506,107
64	46930		Petroleum Special Tax	31,458		31,458		31,458
65	47230		Disaster Relief	0		0		0
66								
67			<b>Total Other State Revenues</b>	1,537,565	0	1,537,565	0	1,537,565
68								
69			<b>Total State of Tennessee</b>	<b>2,397,908</b>	<b>0</b>	<b>2,397,908</b>	<b>0</b>	<b>2,397,908</b>
70								
71								
72			<b>Total Revenues</b>	<b>3,056,738</b>	<b>0</b>	<b>3,056,738</b>	<b>0</b>	<b>3,056,738</b>
73								
74								
75								
76								
77								

Loudon County  
Highway Fund 131  
Fiscal Year Ending June 30, 2011

	A	B	C	D	E	F	G	H
1			<b>Highway Dept 131</b>					
2	<b>Account</b>		11/14/2010 18:28	<b>2010-2011</b>	<b>2010-2011</b>	<b>Approved</b>	<b>Proposed</b>	<b>Proposed</b>
3	<b>Number</b>			<b>Org Bgt</b>	<b>Amds</b>	<b>Amded Bgt</b>	<b>Amds</b>	<b>Amded Budget</b>
4								
78								
79			<b>Total Highway/Public Works Expenditures</b>					
80	60000		Highways					
81	61000		Administration					
82	101		County Official/Adm Officer	75,265		75,265		75,265
83	103		Assistant	50,960	520	51,480	(36,828)	14,652
84	140		Salary Supplements	0		0		0
85	140		Salary Supplements (all employees)	6,573		6,573		6,573
86	141		Foremen	37,003	375	37,378	18,828	56,206
87	142		Mechanics	64,201	600	64,801		64,801
88	143		Equipment Operator	114,212	1,110	115,322	24,000	139,322
89	147		Truck Drivers	251,006	2,441	253,447	2,000	255,447
90	162		Clerical Personnel	29,010	282	29,292	2,000	31,292
91	168		Temporary Personnel	41,440		41,440	(10,000)	31,440
92	169		Part-time Personnel	0		0		0
93	187		Overtime Pay	15,000		15,000		15,000
94	302		Advertising	250		250		250
95	320		Dues & Memberships	5,000	3,000	8,000		8,000
96	331		Legal Services	2,500		2,500		2,500
97	337		Maintenance - Office Equipment	200		200		200
98	348		Postal Charges	300		300		300
99	349		Printing, Stationery & Forms	200		200		200
100	355		Travel	3,900		3,900		3,900
101	435		Office Supplies	2,100		2,100		2,100
102	524		In-Service/Staff Development	200		200		200
103	719		Office Equipment	3,000		3,000		3,000
104								
105			Total Administration	702,320	8,328	710,648	0	710,648
106								
107								
108								
109								

Nov 2, 2010  
Highlighted  
amendments were  
not approved by Co  
Comm on Nov 1st

Loudon County  
Highway Fund 131  
Fiscal Year Ending June 30, 2011

	A	B	C	D	E	F	G	H
1			<b>Highway Dept 131</b>					
2	<b>Account</b>		11/14/2010 18:28	<b>2010-2011</b>	<b>2010-2011</b>	<b>Approved</b>	<b>Proposed</b>	<b>Proposed</b>
3	<b>Number</b>			<b>Org Bgt</b>	<b>Amds</b>	<b>Amded Bgt</b>	<b>Amds</b>	<b>Amded Budget</b>
4								
110	62000		Highway and Bridge Maintenance					
111	321		Engineering Services	10,000	(3,000)	7,000		7,000
112	323		Explosive and Drilling Services	150		150		150
113	351		Rentals	3,600		3,600		3,600
114	399		Other Contracted Services	15,000		15,000		15,000
115	403		Asphalt - Cold Mix	20,000		20,000		20,000
116	404		Asphalt - Hot Mix	375,000		375,000		375,000
117	408		Concrete	5,000		5,000		5,000
118	409		Crushed Stone	25,000		25,000		25,000
119	438		Pipe	21,500	20,000	41,500		41,500
120	443		Road Signs	15,000		15,000		15,000
121	444		Salt	10,000		10,000		10,000
122	445		Sand	1,500		1,500		1,500
123	468		Chemicals	4,000		4,000		4,000
124	499		Other Supplies & Materials	30,000	(20,000)	10,000	(1,400)	8,600
125								
126			Total Highway & Bridge Maintenance	535,750	(3,000)	532,750	(1,400)	531,350
127								
128								
129								
130								
131								

**Loudon County  
Highway Fund 131  
Fiscal Year Ending June 30, 2011**

	A	B	C	D	E	F	G	H
1			<b>Highway Dept 131</b>					
2	<b>Account</b>		11/14/2010 18:28	<b>2010-2011</b>	<b>2010-2011</b>	<b>Approved</b>	<b>Proposed</b>	<b>Proposed</b>
3	<b>Number</b>			<b>Org Bgt</b>	<b>Amds</b>	<b>Amded Bgt</b>	<b>Amds</b>	<b>Amded Budget</b>
4								
132	63100		Operation & Maintenance of Equipment					
133	338		Maintenance & Repair Vehicles	30,000		30,000	500	30,500
134	353		Tow-In Services	4,000		4,000		4,000
135	359		Disposal Fees	36,050	(3,000)	33,050		33,050
136	412		Diesel Fuel	60,000		60,000		60,000
137	416		Equipment Parts - Heavy	18,000		18,000		18,000
138	417		Equipment Parts - Light	75,000		75,000		75,000
139	425		Gasoline	30,000		30,000		30,000
140	433		Lubricants	7,000		7,000		7,000
141	450		Tires and Tubes	25,000		25,000		25,000
142	499		Other Supplies & Materials	10,000		10,000		10,000
143	599		Other Charges	650		650		650
144								
145			Total Operation & Maint of Equip	295,700	(3,000)	292,700	500	293,200
146								
147								

Loudon County  
Highway Fund 131  
Fiscal Year Ending June 30, 2011

	A	B	C	D	E	F	G	H
1			<b>Highway Dept 131</b>					
2	<b>Account</b>		11/14/2010 18:28	<b>2010-2011</b>	<b>2010-2011</b>	<b>Approved</b>	<b>Proposed</b>	<b>Proposed</b>
3	<b>Number</b>			<b>Org Bgt</b>	<b>Amds</b>	<b>Amded Bgt</b>	<b>Amds</b>	<b>Amded Budget</b>
4								
148	65000		Other Charges					
149	307		Communication	8,000	3,000	11,000		11,000
150	347		Pest Control	500		500		500
151	399		Other Contracted Services	0		0	900	900
152	410		Custodial Supplies	600		600		600
153	413		Drugs and Medical Supplies	1,500		1,500		1,500
154	415		Electricity	12,000		12,000		12,000
155	424		Garage Supplies	10,000		10,000		10,000
156	427		Ice	950		950		950
157	451		Uniforms	13,000		13,000		13,000
158	506		Liability Insurance	76,000		76,000		76,000
159	508		Premiums on Corporate Surety Bonds	700		700		700
160	510		Trustee's Commission	30,000		30,000		30,000
161	599		Other Charges	340		340		340
162								
163			Total Other Charges	153,590	3,000	156,590	900	157,490
164								

**Loudon County  
Highway Fund 131  
Fiscal Year Ending June 30, 2011**

	A	B	C	D	E	F	G	H
1			<b>Highway Dept 131</b>					
2	<b>Account</b>		11/14/2010 18:28	<b>2010-2011</b>	<b>2010-2011</b>	<b>Approved</b>	<b>Proposed</b>	<b>Proposed</b>
3	<b>Number</b>			<b>Org Bgt</b>	<b>Amds</b>	<b>Amded Bgt</b>	<b>Amds</b>	<b>Amded Budget</b>
4								
165	66000		Employee Benefits					
166	201		Social Security	42,450	330	42,780		42,780
167	204		State Retirement	61,235	508	61,743		61,743
168	205		Employee & Dependent Insurance	5,418		5,418		5,418
169	206		Life Insurance	1,347		1,347		1,347
170	206-RET-L		Life Insurance - Retirees	574		574		574
171	207		Medical Insurance	157,727		157,727		157,727
172	207-RET		Medical Insurance - Retirees	9,836		9,836		9,836
173	207-SRHTH		Medical Insurance - Sr Health	0		0		0
174	208		Dental Insurance	10,859		10,859		10,859
175	208-RET-D		Dental Insurance - Retirees	1,692		1,692		1,692
176	209		Disability Insurance	0		0		0
177	210		Unemployment Compensation	5,000		5,000		5,000
178	212		Employer Medicare	9,928	77	10,005		10,005
179	513		Workman's Compensation Insurance	46,000		46,000		46,000
180								
181			Total Employee Benefits	352,066	915	352,981	0	352,981
182								
183								
184								
185								
186								
187								

Loudon County  
Highway Fund 131  
Fiscal Year Ending June 30, 2011

	A	B	C	D	E	F	G	H
1			<b>Highway Dept 131</b>					
2	<b>Account</b>		11/14/2010 18:28	<b>2010-2011</b>	<b>2010-2011</b>	<b>Approved</b>	<b>Proposed</b>	<b>Proposed</b>
3	<b>Number</b>			<b>Org Bgt</b>	<b>Amds</b>	<b>Amded Bgt</b>	<b>Amds</b>	<b>Amded Budget</b>
4								
188	68000		Capital Outlay					
189	339		Matching Share	200,000		200,000		200,000
190	705		Bridge Construction	329,066		329,066		329,066
191	711		Furniture & Fixtures	3,000		3,000		3,000
192	714		Highway Equipment	50,000	(22,296)	27,704		27,704
193	718		Motor Vehicles	0	22,296	22,296		22,296
194	726		State Aid Projects	531,277		531,277		531,277
195								
196			Total Capital Outlay	1,113,343	0	1,113,343	0	1,113,343
197								
198	<b>TOTAL HIGHWAYS</b>			<b>3,152,769</b>	<b>6,243</b>	<b>3,159,012</b>	<b>0</b>	<b>3,159,012</b>
199								



Loudon County  
Highway Fund 131  
Fiscal Year Ending June 30, 2011

	A	B	C	D	E	F	G	H
1			<b>Highway Dept 131</b>					
2	<b>Account</b>		11/14/2010 18:28	<b>2010-2011</b>	<b>2010-2011</b>	<b>Approved</b>	<b>Proposed</b>	<b>Proposed</b>
3	<b>Number</b>			<b>Org Bgt</b>	<b>Amds</b>	<b>Amded Bgt</b>	<b>Amds</b>	<b>Amded Budget</b>
4								
200								
201	80000		Debt Service					
202								
203								
204	82120		Highways and Streets					
205	602		Principal on Notes	0	0	0		0
206								
207			Total Principal on Notes	0	0	0	0	0
208								
209								
210								
211	82220		Highways and Streets					
212	604		Interest on Notes	0	0	0		0
213						0		0
214			Total Interest on Notes	0	0	0	0	0
215								
216	<b>Total Debt Service</b>			<b>0</b>	<b>0</b>	<b>0</b>	<b>0</b>	<b>0</b>
217								
218	99000		Other Uses					
219	99100		Transfers Out					
220	590		Transfers to Other Funds (Debt Pmt)	151,151	0	151,151		151,151
221								
222			<b>Total Transfers Out</b>	<b>151,151</b>	<b>0</b>	<b>151,151</b>	<b>0</b>	<b>151,151</b>
223								
224								
225								
226								
227	<b>Total Expenditures</b>			<b>3,303,920</b>	<b>6,243</b>	<b>3,310,163</b>	<b>0</b>	<b>3,310,163</b>
228								
229								
230								
231								

Loudon County  
Highway Fund 131  
Fiscal Year Ending June 30, 2011

	A	B	C	D	E	F	G	H
1			<b>Highway Dept 131</b>					
2	<b>Account</b>		11/14/2010 18:28	<b>2010-2011</b>	<b>2010-2011</b>	<b>Approved</b>	<b>Proposed</b>	<b>Proposed</b>
3	<b>Number</b>			<b>Org Bgt</b>	<b>Amds</b>	<b>Amded Bgt</b>	<b>Amds</b>	<b>Amded Budget</b>
4								
232								
233	<b>Estimated Beg Fund Balance July 1, 2010</b>			485,697		485,697		485,697
234								
235								
236								
237	<b>Total Revenue</b>			3,056,738	0	3,056,738	0	3,056,738
238								
239								
240	<b>Total Available Funds</b>			3,542,435	0	3,542,435	0	3,542,435
241								
242	<b>Expenditure Budget</b>			3,303,920	6,243	3,310,163	0	3,310,163
243								
244	<b>Total Expenditures and Transfer Out</b>			3,303,920	6,243	3,310,163	0	3,310,163
245								
246	<b>Estimated Ending Fund Balance</b>			238,515	(6,243)	232,272	0	232,272
247								
248								

LOUDON COUNTY  
General Capital Projects Fund 171  
Fiscal Year Ending June 30, 2011

	A	B	C	D	E	F	G	H	I	J	K
1											
2					11/14/10						2010-2011
3					11/14/10 6:20 PM		2010-2011	2010-2011	Approved	Proposed	2010-2011
4							Org Bgt	Amds	Amded Bgt	Amds	Proposed
5	<b>SUBFUND 011</b>						1.5				Amded Budget
6	<b>REVENUE</b>						165,587				
7		4000	Local Taxes								
8			40110	Current Property Taxes			248,381		248,381		248,381
9			40120	Trustee's Pr Yr			8,000		8,000		8,000
10			40125	Trustee's Collections-Bankruptcy					0		0
11			40130	Clerk and Master's Pr Yr			2,000		2,000		2,000
12			40140	Interest and Penalty			500		500		500
13			40320	Bank Excise Tax			1,000		1,000		1,000
14											
15				<b>Total Local Revenue</b>			259,881	0	259,881	0	259,881
16											
17		48100	Other Governments								
18			48140	Contracted Service			6,627		6,627		6,627
19											
20				<b>Total Other Revenue Sources</b>			6,627	0	6,627	0	6,627
21											
22											
23											
24				<b>TOTAL SUBFUND 011 REVENUE</b>			266,508	0	266,508	0	266,508
25											
26	<b>EXPENDITURES</b>										
27		58900	Miscellaneous								
28			510	Trustee's Commission			7,200		7,200		7,200
29											
30				<b>Total Miscellaneous Expenditures</b>			7,200	0	7,200	0	7,200
31											
32		91130	Administration of Justice Projects								
33			399	Other Contracted Services			135,000		135,000		135,000
34											
35				<b>Total Adm of Justice Projects</b>			135,000	0	135,000	0	135,000
36											
37		91110	General Administration Projects								
38			399	Other Contracted Services			60,000		60,000		60,000
39											
40				<b>Total General Adm Projects</b>			60,000	0	60,000	0	60,000
41											
42											
43				<b>TOTAL SUBFUND 011 EXPENDITURES</b>			202,200	0	202,200	0	202,200
44											
45				<b>TOTAL SUBFUND 011 EXPENDITURES</b>			202,200	0	202,200	0	202,200
46											
47											
48											
49											

LOUDON COUNTY  
 General Capital Projects Fund 171  
 Fiscal Year Ending June 30, 2011

	A	B	C	D	E	F	G	H	I	J	K	
1												
2					11/14/10						2010-2011	
3					11/14/10 6:20 PM		2010-2011	2010-2011	Approved	Proposed	Proposed	
4							Org Bgt	Amds	Amded Bgt	Amds	Amded Budget	
50	SUBFUND ADA - AMERICANS WITH DISABILITIES ACT											
51	EXPENDITURE											
52		91140	Public Health and Welfare Projects									
53			399	Other Contracted Services				7,500	7,500		7,500	
54			499	Other Supplies and Materials					0		0	
55			734	Disabilities Act Improvements					0		0	
56												
57				Total Social, Cultural & Recreation			0	7,500	7,500	0	7,500	
58												
59												
60				TOTAL SUBFUND ADA EXPENDITURES			0	7,500	7,500	0	7,500	

LOUDON COUNTY  
 General Capital Projects Fund 171  
 Fiscal Year Ending June 30, 2011

	A	B	C	D	E	F	G	H	I	J	K
1											
2					11/14/10						
3					11/14/10 6:20 PM						2010-2011
4							2010-2011 Org Bgt	2010-2011 Amds	Approved Amded Bgt	Proposed Amds	Proposed Amded Budget
61	SUBFUND GIS-GEOGRAPHIC INFORMATION SYSTEM										
62	REVENUE										
63		44500	Nonrecurring Items								
64			44570	Contributions and Gifts			5,000		5,000		5,000
65											
66				Total Nonrecurring Items			5,000	0	5,000	0	5,000
67											
68				TOTAL SUBFUND GIS REVENUE			5,000	0	5,000	0	5,000
69											
70	EXPENDITURES										
71		91190	Other General Government Projects								
72			399	Other Contracted Services			0		0		0
73			719	Office Equipment			0		0		0
74											
75				Total Other General Gov Projects			0	0	0	0	0
76											
77				TOTAL SUBFUND GIS EXPENDITURES			0	0	0	0	0
78											

LOUDON COUNTY  
General Capital Projects Fund 171  
Fiscal Year Ending June 30, 2011

	A	B	C	D	E	F	G	H	I	J	K		
1													
2					11/14/10						2010-2011		
3					11/14/10 6:20 PM						Proposed		
4							2010-2011 Org Bgt	2010-2011 Amds	Approved Amded Bgt	Proposed Amds	Proposed Amded Budget		
79	<b>SUBFUND BUC-BUCKEYE CORRUGATED AKA TN PKG</b>												
80	<b>REVENUE</b>												
81		46400	Public Works Grants										
82			46440	TN Industrial Infrastructure Program							546,679	546,679	546,679
83													
84				Total Public Works Grants							0	546,679	546,679
85													
86		48100	Other Governments & Citizens Groups										
87			48140	Contracted Services							0	245,611	245,611
88											345,232	590,843	
89				Total Other Groups							0	245,611	245,611
90											345,232	590,843	
91				TOTAL SUBFUND BUC REVENUE							0	792,290	792,290
92											345,232	1,137,522	
93													
94													
95	<b>EXPENDITURES</b>												
96		91190	Other General Government Projects										
97			302	Advertising							0	465	465
98			321	Engineering Services							80,875	80,875	80,875
99			322	Evaluation & Testing							0	0	52,700
100			399	Other Contracted Services							6,000	6,000	1,535
101			724	Site Development							0	704,950	704,950
102											236,050	941,000	
103											0	54,947	54,947
104				Total Other General Gov Projects							0	792,290	792,290
105											345,232	1,137,522	
106				TOTAL SUBFUND BUC EXPENDITURES							0	792,290	792,290
107											345,232	1,137,522	
108													
109													
110													

LOUDON COUNTY  
 General Capital Projects Fund 171  
 Fiscal Year Ending June 30, 2011

	A	B	C	D	E	F	G	H	I	J	K
1											
2					11/14/10						
3					11/14/10 6:20 PM						2010-2011
4							2010-2011 Org Bgt	2010-2011 Amds	Approved Amded Bgt	Proposed Amds	Proposed Amded Budget
111	<u>SUBFUND CLD - CLOYD CREEK BRIDGE ON UNITIA RD</u>										
112	EXPENDITURE										
113		71200	Highway & Street Capital Projects								
114			791	Other Construction							
115									0	55,849	55,849
116									0		0
117									0		0
118				Total Highway & Street Capital Projects			0	0	0	55,849	55,849
119											
120											
121				TOTAL SUBFUND CLD EXPENDITURES			0	0	0	55,849	55,849

Cloyd Creek Bridge was originally included in the FY 08-09 budget. There were no expenditures in FY 09-10. This amendment budget the unexpensed portion of the approved project.  
 [Nov15\_06Dec2010]

LOUDON COUNTY  
 General Capital Projects Fund 171  
 Fiscal Year Ending June 30, 2011

	A	B	C	D	E	F	G	H	I	J	K
1											
2					11/14/10						2010-2011
3					11/14/10 6:20 PM		2010-2011	2010-2011	Approved	Proposed	Proposed
4							Org Bgt	Amds	Amded Bgt	Amds	Amded Budget
122					BEGINNING FUND BALANCE (Unaudited)		2,068,611		2,068,611		2,068,611
123											
124					TOTAL REVENUE		271,508	792,290	1,063,798	345,232	1,409,030
125											
126					TOTAL AVAILABLE FUNDS		2,340,119	792,290	3,132,409	345,232	3,477,641
127											
128											
129					TOTAL EXPENDITURE/TRFS		202,200	799,790	1,001,990	55,849	1,057,839
130											
131											
132											
133											
134					ENDING FUND BALANCE		2,137,919		2,130,419	289,383	2,419,802
135											



**Project Diabetes Program Implementation Grant Overview**  
**Submitted to Loudon County Commission**  
**By Kathy Proaps**  
**Loudon County Schools Grant Writer/Coordinator**  
**December 6, 2010**

**Funding: Approximately \$250,000**

**Contract period: October 1, 2010 – June 30, 2011**

**Funding Source: TN Dept. of Health**

**The American Recovery and Reinvestment Act (ARRA) funds these grants**

**Funds will be used to build a 6 lane track around the football field at Loudon High School for student and community use**

**Project Diabetes: Purpose**

**Innovative education, prevention, and treatment program for diabetes and obesity**

**Fundamental Goals of grant**

**Decrease the prevalence of overweight/obesity – prevent or delay the onset of Type 2 diabetes**

**Educate the public about health issues linked to diabetes and obesity**

**Focus for our proposal: Loudon community and Loudon County students – promoting physical activity and education/awareness**

**No local funds to be allocated for this project**

**No staff will be paid with these funds**

**All grant funds must be spent by June 30, 2011**

**Loudon County School Board has approved accepting this grant award**

	A	B	C	D	E	F	G	H	I	J
75	46000		State of Tennessee							
76										
77	46500		State Education Funds							
78	46511		Basic Education Program	18,152,500	(99,000)	18,053,500	0	18,053,500		
79	46512-ARRA-BEP		Basic Education Program -ARRA	926,500	0	926,500	0	926,500		
80	46515		Early Childhood Education	0	0	0	0	0		
81	46520		School Food Service	25,500	(25,500)	0	0	0		
82	46550		Driver Education	0	0	0	0	0		
83	46590		Other State Education Funds	823,533	0	823,533	0	823,533		
84	46590-ARRA-DIAB		Other State Education Funds - Diabetes Grant	0	0	0	250,000	250,000		
85	46590-LEAP		Other State Education Funds - LEAPS Grant	0	0	0	0	0		
86	46591-ARRA-CSH		Coordinated School Health	0	160,000	160,000	0	160,000		
87	46592-ARRA-IC		Internet Connectivity	0	0	0	0	0		
88	46592		Internet Connectivity	0	0	0	0	0		
89	46593		Professional Development	0	0	0	0	0		
90	46594-ARRA-FRC		Family Resource Center	0	33,300	33,300	0	33,300		
91	46595-ARRA-SSMS		SSMS	0	0	0	0	0		
92	46610		Career Ladder Program	207,675	15,742	223,417	0	223,417		
93	46612		Career Ladder-Extended Contract	0	0	0	0	0		
94	46615-ARRA-EC		Career Ladder-Extended Contract	118,400	0	118,400	0	118,400		
95										
96			<b>Total State Education Funds</b>	<b>20,254,108</b>	<b>84,542</b>	<b>20,338,650</b>	<b>250,000</b>	<b>20,588,650</b>		
97										
98	46800		Other State Revenues							
99	46840		Alcoholic Beverage Tax	0	0	0	0	0		
100	46850		Mixed Drink Tax	1,500	0	1,500	0	1,500		
101	46851		State Revenue Sharing-T.V.A.	950,000	0	950,000	0	950,000		
102										
103			<b>Total Other State Revenues</b>	<b>951,500</b>	<b>0</b>	<b>951,500</b>	<b>0</b>	<b>951,500</b>		
104										
105			<b>Total State of Tennessee</b>	<b>21,205,608</b>	<b>84,542</b>	<b>21,290,150</b>	<b>250,000</b>	<b>21,540,150</b>		

	A	B	C	D	E	F	G	H	I	J
130										
131	48600		Citizens Groups							
132										
133										
134	48610		Donations	10,000	0	10,000	0	10,000		
135	48610-ABC		Donations - Arts Build Communities	0	0	0	0	0		
136	48610-BIT		Donations - Bridges in Transition	0	0	0	0	0		
137	48610-CAMP		Donations - Camp Bravado	0	0	0	0	0		
138	48610-TOTS		Donations - TOTS	0	0	0	0	0		
139										
140										
141			Total Citizens Groups	10,000	0	10,000	0	10,000		
142										
143	49700		Insurance Recovery	0	0	0	0	0		
144	49800		Transfer In	0	0	0	0	0		
145										
146										
147	<b>Total Revenues</b>			<b>37,383,198</b>	<b>(2,536,193)</b>	<b>34,847,005</b>	<b>250,000</b>	<b>35,097,005</b>		
148										
149			<b>Total Other Source</b>	<b>0</b>	<b>0</b>	<b>0</b>	<b>0</b>	<b>0</b>		
150										
151										
152	<b>Total General Purpose School</b>			<b>37,383,198</b>	<b>(2,536,193)</b>	<b>34,847,005</b>	<b>250,000</b>	<b>35,097,005</b>		
153										

	A	B	C	D	E	F	G	H	I	J
616	307-ARRA-CSH		Communication ARRA - CSH Grant	0	0	0	0	0		
617	355		Travel	2,000	0	2,000	0	0	2,000	
618	355-ARRA-CSH		Travel ARRA - CSH	0	2,033	2,033	0	0	2,033	
619	355-LEAP		Travel - LEAPS Grant	0	0	0	0	0	0	
620	355-PEP		Travel - PEP Grant	2,500	0	2,500	0	0	2,500	
621	399		Other Contracted Services	0	1,000	1,000	0	0	1,000	
622	399-ABC		Other Contracted Services - ABC Grant	0	0	0	0	0	0	
623	399-ARRA-DIAB		Other Contracted Services - Diabetes Grant	0	0	0	240,000	240,000	0	
624	399-CAMP		Other Contracted Services	0	0	0	0	0	0	
625	399-LEAP		Other Contracted Services	0	0	0	0	0	0	
626	422		Food Supplies	7,000	0	7,000	0	0	0	
627	422-LEAP		Food Supplies - LEAPS Grant	0	0	0	0	0	0	
628	429-ARRA-CSH		Instructional Supplies ARRA - CSH	0	2,033	2,033	0	0	2,033	
629	429-PEP		Instructional Supplies	0	4,000	4,000	0	0	4,000	
630	499		Other Supplies and Materials	4,750	0	4,750	0	0	4,750	
631	499-ARRA-DIAB		Other Supplies and Materials	0	0	0	10,000	10,000	0	
632	499-BIT		Other Supplies and Materials - BIT	0	0	0	0	0	0	
633	499-CAMP		Other Supplies & Materials	0	0	0	0	0	0	
634	499-LEAP		Other Supplies & Materials - LEAPS Grant	0	0	0	0	0	0	
635	499-PEP		Other Supplies & Materials	0	0	0	0	0	0	
636	499-TOTS		Other Supplies & Materials	0	0	0	0	0	0	
637	524-ARRA-CSH		In Service/Staff Development ARRA - CSH	0	2,033	2,033	0	0	2,033	
638	524-LEAP		In Service/Staff Development - LEAPS Grant	0	0	0	0	0	0	
639	719		Office Equipment	2,300	0	2,300	0	0	2,300	
640	719-LEAP		Office Equipment - LEAPS Grant	0	0	0	0	0	0	
641	790-PEP		Other Equipment - PEP Grant	101,317	(4,000)	97,317	0	0	97,317	
642										
643			<b>Total Community Services</b>	<b>467,901</b>	<b>26,312</b>	<b>494,213</b>	<b>250,000</b>	<b>744,213</b>		

	A	B	C	D	E	F	G	H	I	J
682										
683										
684	82300		Other Debt Service							
685										
686	82330		Education							
687		699	Other Debt Service	0	0	0	0	0		
688										
689			Total Education Debt Service	0	0	0	0	0		
690										
691										
692	80000		Total Education Debt Service	0	0	0	0	0		
693										
694	90000		Capital Projects							
695										
696	99100									
697		590	Transfer out	0	300,000	300,000	0	300,000		
698										
699			Total Expenditures	37,383,198	-2,232,631	35,150,567	250,000	35,400,567		
700										
701			Total Other Uses	0	0	0	0	0		
702										
703			Total General Purpose School	37,383,198	(2,232,631)	35,150,567	250,000	35,400,567		
704										
705										
706										
707										
708			Beginning Fund Balance (Audited)	3,074,077	0	3,074,077	0	3,074,077		
709										
710										
711			Total Revenue	37,383,198	(2,536,193)	34,847,005	250,000	35,097,005		
712										
713										
714			Total Available Funds	40,457,275	(2,536,193)	37,921,082	250,000	38,171,082		
715										
716										
717			Total Expenditures	37,383,198	(2,232,631)	35,150,567	250,000	35,400,567		
718										
719										
720			Estimated Ending Fund Balance	3,074,077	(303,562)	2,770,515	0	2,770,515		
721										
722										
723			* \$300,000 was transferred to sub fund 999 of fund 142 that can be pulled back for regular fund balance purposes at any time.							
724										

Loudon County  
 County General Fund 101  
 Fiscal Year Ending June 30, 2011

	A	B	C	D	E	F	G	H
1			<b>General Fund 101</b>					
2	<b>Account Number</b>		12/6/2010 16:57	2010-2011	2010-2011	Approved	Proposed	Proposed
3				Org Bgt	Amds	Amded Bgt	Amds	Amded Budget
4								
1553			<b>July 1, 2010 Estimated Undesignated Fund Balance</b>	6,499,077		6,499,077		6,499,077
1554								
1555								
1556								
1557								
1558								
1559			<b>Total Revenue</b>	13,407,509	17,940	13,425,449	0	13,425,449
1560			<b>Transfers In</b>	0	2,319	2,319	0	2,319
1561								
1562			<b>Total Revenue and Transfers In</b>	13,407,509	20,259	13,427,768	0	13,427,768
1563								
1564								
1565								
1566			<b>Total Available Funds</b>	19,906,586	20,259	19,926,845	0	19,926,845
1567								
1568			<b>Expenditure Budget</b>	14,734,417	157,886	14,892,303	250,000	15,142,303
1569			<b>Transfers Out</b>	0	0	0	0	0
1570								
1571			<b>Total Expenditures and Transfer Out</b>	14,734,417	157,886	14,892,303	250,000	15,142,303
1572								
1573			<b>Ending Fund Balance</b>	5,172,169	(137,627)	5,034,542	(250,000)	4,784,542
1574								

Louisa County  
County General Fund 101  
Fiscal Year Ending June 30, 2011

	A	B	C	D	E	F	G	H
1			<b>General Fund 101</b>					
2	<b>Account</b>		12/6/2010 16:57	2010-2011	2010-2011	Approved	Proposed	Proposed
3	<b>Number</b>			Org Bgt	Amds	Amded Bgt	Amds	Amded Budget
4								
1034	411		Data Processing Supplies	0		0		0
1035	413		Drugs and Medical Supplies	8,785		8,785		8,785
1036	425		Gasoline	250,000		250,000		250,000
1037	435		Office Supplies	16,500		16,500		16,500
1038	450		Tires	23,500		23,500		23,500
1039	451		Uniforms	19,000		19,000		19,000
1040	499		Other Supplies and Materials	7,000		7,000		7,000
1041	505		Judgements	0		0		0
1042	506		Liability Insurance	0		0		0
1043	508		Premiums on Corporate Surety Bonds	125		125		125
1044	511		Vehicle Equipment and Insurance	0		0		0
1045	513		Worker's Comp Insurance	0		0		0
1046	524		In Service/Staff Development	10,000		10,000		10,000
1047	524 LFSVR		In Service/Staff Dev-Project Lifesaver		500	500		500
1048	599		Other Charges	0		0		0
1049	708		Communication Equipment	6,500		6,500		6,500
1050	711		Office Furniture	0		0		0
1051	716		Law Enforcement Equipment	0	1,679	1,679		1,679
1052	718		Motor Vehicles	250,000		250,000	250,000	500,000
1053	719		Office Equipment	1,500		1,500		1,500
1054								
1055			Total Sheriff's Department	3,738,817	27,042	3,765,859	250,000	4,015,859
1056								

Loudon County  
County General Fund 101  
Fiscal Year Ending June 30, 2011

	A	B	C	D	E	F	G	H
1			<b>General Fund 101</b>					
2	<b>Account</b>		12/6/2010 16:57	2010-2011	2010-2011	Approved	Proposed	Proposed
3	<b>Number</b>			Org Bgt	Amds	Amded Bgt	Amds	Amded Budget
4								
992	54000		Public Safety					
993								
994	54110		Sheriff's Department					
995	101		County Official/Administrative Officer	75,265		75,265		75,265
996	103		Assistants (Chief Deputies)	108,460	1,085	109,545		109,545
997	106		Deputies	1,086,498	10,266	1,096,764		1,096,764
998	108		Investigator(s)	177,273	1,763	179,036		179,036
999	109		Captain(s)	48,264	483	48,747		48,747
1000	115		Sergeant(s)	132,320	1,328	133,648		133,648
1001	120		Computer Programmer(s)	0		0		0
1002	140		Salary Supplement (Pay Adjustment all	16,259		16,259		16,259
1003	140		Salary Supplement (State reimb 46210)	25,500		25,500		25,500
1004	161		Secretary(s)	29,500	307	29,807		29,807
1005	162		Clerical Personnel	83,430	852	84,282		84,282
1006	169		Part-time Personnel (Deputies)	65,000		65,000		65,000
1007	170		School Resource Officer	153,408	1,485	154,893		154,893
1008	187		Overtime Pay	121,300		121,300		121,300
1009	187-GHSOG		Overtime Pay (GHSO Grant)	0	5,000	5,000		5,000
1010	201		Social Security	131,594	1,399	132,993		132,993
1011	204		State Retirement	195,872		195,872		195,872
1012	206		Life Insurance	3,770		3,770		3,770
1013	206-RET-LIF		Life Insurance-Retirees	1,584		1,584		1,584
1014	207		Medical Insurance	447,942		447,942		447,942
1015	207-RET-MED		Medical Insurance - Retirees	4,913		4,913		4,913
1016	207-SRHTH		Medical Insurance - Sr. Health	3,016		3,016		3,016
1017	208		Dental Insurance	27,061		27,061		27,061
1018	208-RET-DEN		Dental Insurance-Retirees	2,852		2,852		2,852
1019	210		Unemployment Compensation	0		0		0
1020	212		Employer Medicare	30,776	255	31,031		31,031
1021	196		In-Service Training	0		0		0
1022	307		Communication	23,180		23,180		23,180
1023	317		Data Processing Services	1,020		1,020		1,020
1024	320		Dues and Memberships	2,135		2,135		2,135
1025	330		Operating Lease Payments ( Copier )	2,425		2,425		2,425
1026	331		Legal Services	0		0		0
1027	334		Maintenance Agreements	4,090		4,090		4,090
1028	336		Equipment Maint & Repair	0		0		0
1029	338		Maintenance and Repair Services - Vet	110,000	640	110,640		110,640
1030	353		Tow-in Services	3,200		3,200		3,200
1031	355		Travel	8,000		8,000		8,000
1032	399		Other Contracted Services	10,000		10,000		10,000
1033	399-TBI		Other Contracted Services-TBI Testing	10,000		10,000		10,000