

LOUDON COUNTY COMMISSION

Loudon County, Tennessee

January 02, 2018

6:00 PM

Courthouse Annex

AGENDA

Regular Meeting

PUBLIC HEARING:

1. **A Resolution amending the Zoning Map of Loudon County, Tennessee, pursuant to Chapter Seven, §13-7-105 of the Tennessee Code Annotated, to rezone approximately 2 acres from O-1 (Office Professional District) to A-2 (Rural Residential District) referenced by Tax Map 049, Parcel 039.00 Clear Branch Road, Loudon, TN situated in the 1st Legislative District**

1. Opening of Meeting, Pledge of Allegiance, Invocation
2. Roll Call
3. Adoption of the Agenda – January 02, 2018
4. Reading and Acceptance of the December 04, 2017 Commission Meeting Minutes
5. General Public Comments
6. Reports of County Officials, Departments, and Committees:
 - A. **Loudon County Mayor – Buddy Bradshaw**
 1. Items not covered by the Courtroom Security Grant

B. Highway Superintendant – Eddie Simpson

1. Resolution directing County Highway Department to perform maintenance and road repairs on county properties
2. Approval of updated County Roads list

C. Planning Director – Laura Smith

1. A Resolution amending the Zoning Map of Loudon County, Tennessee, pursuant to Chapter Seven, §13-7-105 of the Tennessee Code Annotated, to rezone approximately 2 acres from O-1 (Office Professional District) to A-2 (Rural Residential District) referenced by Tax Map 049, Parcel 039.00 Clear Branch Road, Loudon, TN situated in the 1st Legislative District

E. Budget Director – Tracy Blair

1. Consideration of approval of application/acceptance of \$39,500.00 EMPG Grant; no matching funds required
2. Consideration of approval/acceptance of \$12,622.00 Homeland Security Grant; no matching funds required
3. Consideration of approval of amendments in the following funds:
 - a. County General Fund 101
 - b. Public Libraries Fund 115
 - c. Highway Department Fund 131
 - d. General Purpose School Fund 141
 - e. School Federal Projects Fund 142
4. Distribution of Monthly Reports

F. County Commissioner – David Meers

1. Notaries & Bonds

7. Adjournment

LOUDON COUNTY COMMISSION
LOUDON COUNTY, TENNESSEE

Monday December 04, 2017
Courthouse Annex Building
6 P.M.

DRAFT
Not Approved

REGULAR COMMISSION MEETING

(1)
Opening
of Meeting

BE IT REMEMBERED that the Board of Commissioners of Loudon County convened in regular session in Loudon, Tennessee on the 6th day of November, 2017.

County Commission Chairman, Steve Harrelson called the meeting to order at 6:02 PM.

Commission Chairman, Steve Harrelson opened the County Commission Meeting, led the Pledge of Allegiance to the Flag of the United States of America, and gave the Invocation.

(2)
Roll Call

Upon Roll Call, the following Commissioners were present: **Kelly Brewster, David Meers, Earlena Maples, Bill Satterfield, Leo Bradshaw, Steve Harrelson, Harold Duff, Van Shaver, and Henry Cullen. (9)**

Absent were the following Commissioners: **Matthew Tinker (1)**

Thereupon **Chairman Steve Harrelson** announced the presence of a quorum.

Present was Financial Director Tracy Blair and the Honorable Mayor Buddy Bradshaw.

(3)
Adoption
of Agenda

Chairman Harrelson requested that the December 04, 2017 Agenda be adopted with the following amendments: To add 6.E. to agenda to discuss moving the December 18th, 2017 Workshop date to January 02, 2017 at 5 P.M.

Commissioner Shaver made a motion to adopt the December 04, 2017 Amended Agenda and a second was made by **Commissioner Bradshaw.**

Upon voice vote the motion **PASSED** unanimously.

(4)
Commission
Meeting
Minutes
Approved

Chairman Harrelson requested that the November 06, 2017 Commission Meeting Minutes be approved and accepted. **Commission Cullen** made a motion to approve and the minutes. A second was made by **Commissioner Meers.**

Upon voice vote the motion **Passed** unanimously.

DRAFT
Not Approved

(5)
General
Public
Comments

Chairman Harrelson opened the floor for General Public Comments. Pat Hunter spoke.

(6)
Board &
Committee
Term Update

Mayor Buddy Bradshaw made recommendations for the Board and Committee Terms. The following Boards & Committees were presented to the Commission to be updated: The Chamber of Commerce Board of Directors, The County Corrections Partnership Committee, and the Visitor's Bureau Board. After a brief discussion between the **Commissioners** and **Mayor Bradshaw**, it was decided that the County Corrections Partnership Committee would be tabled until the next workshop due to the Commissioners needing more information. **Commissioner Shaver** then made a motion to approve the Chamber of Commerce Board of Directors and the Visitor's Bureau Board. **Commissioner Brewster** made a second.

Upon voice vote the **MOTION PASSED** unanimously.

Resolutions 120417-A, 102417-B & 120417C

(7)
2018 CDBG
Application

Mayor Bradshaw requested the Commission consider approving a Resolution authorizing Loudon County to make a 2018 Community Development Block Grant Application. A motion was made by **Commissioner Shaver** to approve the Resolution and a second was made by **Commissioner Cullen**.

Chairman Harrelson called for a roll call vote.

Upon roll call vote, the following Commissioners voted **AYE**:
Maples, Satterfield, Bradshaw, Harrelson, Duff, Shaver, Cullen, Brewster and Meers **(9)**

The following Commissioners voted **NAY**: **(0)**

The following Commissioners were **absent**: Tinker **(1)**

The **MOTION PASSED (9/0/1)**

Resolution 120417-D

Chairman Steve Harrelson requested **Pro Temp Chair, Earlena Maples** to preside over meeting during consideration of the next two items.

(8)
Dr. Best
Resignation
Letter

Commissioner Harrelson then presented the Commission with the consideration to accept the resignation letter from **Dr. Rick Best** and to declare that seat of the Loudon County School Board as vacant. **Commissioner Harrelson** explained that **Dr. Best** had some family health issues come up that would require his time. **Pro Temp Chair Maples** opened the floor for a motion to be made. **Commissioner Harrelson** made a motion to accept **Dr. Rick Best's** resignation letter. **Commissioner Shaver** provided a second to the motion.

Upon voice vote the **MOTION PASSED** unanimously.

(9)
6th District
School Board
Vacancy

Commissioner Harrelson then requested the Commission's consideration of appointment to the vacancy of the Loudon County School Board, 6th District seat. **Vice Chair, Maples** opened the floor up for nomination. **Commissioner Harrelson** nominated

DRAFT
Not Approved

Melissa Best, with **Commissioner Meers** supporting that nomination. **Commissioner Shaver** made a motion to cease with a second from **Commissioner Meers**.

Upon voice vote the **MOTION PASSED** unanimously and **Melissa Best** was appointed to take the 6th District Seat on the Loudon County School Board.

Vice Chair Maples turned the meeting back over to **Chairman Steve Harrelson**.

(10)
\$43,750
Additional
Funding
Loudon Co
Fire &
Rescue

Budget Director Tracy Blair asked the Commission to consider a recommendation to contribute \$43,750.00 additional funding to Loudon County Fire and Rescue to purchase property to relocate their facility. There was a brief discussion between the Commissioners. **Commissioner Shaver** made a motion to approve the additional funding and a second was provided by **Commissioner Cullen**.

Chairman Harrelson called for a roll call vote.

Upon roll call vote, the following Commissioners voted **AYE**:
Bradshaw, Harrelson, Duff, Shaver, Cullen, Brewster, Meers, Maples, and Satterfield **(9)**

The following Commissioners voted **NAY**: **(0)**

The following Commissioners were **absent**: Tinker **(1)**

The **MOTION PASSED (9/0/1)**

(11)
\$21,600
Increase in
DGA Grant

Budget Director Tracy Blair asked the Commission to consider a recommendation to approve \$21,600.00 increase in the DGA grant contract for Health Department employees, with no matching funds required. **Commissioner Cullen** made a motion to approve the recommendation. **Commissioner Brewster** seconded the motion.

Chairman Harrelson called for a roll call vote.

Upon roll call vote, the following Commissioners voted **AYE**:
Harrelson, Duff, Shaver, Cullen, Brewster, Meers, Maples, Satterfield, and Bradshaw **(9)**

The following Commissioners voted **NAY**: **(0)**

The following Commissioners were **absent**: Tinker **(1)**

The **MOTION PASSED (9/0/1)**

(12)
Budget
Amendments

Budget Director Tracy Blair requested consideration of a recommendation to approve amendments in the following funds:

- A. County General Fund 101
Exhibit 120417-E
- B. Courthouse / Jail Maintenance Fund 112
Exhibit 120417-F
- C. Public Libraries Fund 115
Exhibit 120417-G

DRAFT
Not Approved

- D. County Drug Fund 122
Exhibit 120417-H
- E. Hwy Department Fund 131
Exhibit 120417-I
- F. General Purpose School Fund 141
Exhibit 120417-J
- G. General Debt Service Fund 151
Exhibit 120417-K
- H. General Capital Projects Fund 171
Exhibit 120417-L

Chairman Harrelson called for a roll call vote.

Upon roll call vote, the following Commissioners voted **AYE**:
Duff, Cullen, Brewster, Meers, Maples, Satterfield, Bradshaw, and Harrelson **(8)**

The following Commissioners voted **NAY**: Shaver **(1)**

The following Commissioners were **absent**: Tinker **(1)**

The **MOTION PASSED (8/1/1)**

(13)
Distribution
of Monthly
Reports

The following monthly reports were distributed by **Budget Director Tracy Blair**:

Summary Financial Statements for the month of November 2017
Exhibit 120417-M

Approved minutes of the Budget Committee from October 16, 2017
Exhibit 120417-N

Debt Obligation Report
Exhibit 120417-O

(14)
Notaries
& Bonds

Commissioner Meers made a motion that was seconded by **Commissioner Shaver** to approve the following notaries and bonds:

Jessica Hope Boring, Alyssa Captain, Rebecca Jane Harrison, Carissa Huskins, Jennifer O'Bryant Martin, Melanie Prater, Michelle M. Strickland, Samantha Lee Anne Vanosdale, Mel Wallis, and Brittnee Watson.

Upon voice vote the motion **PASSED** unanimously.
EXHIBIT 120417-P

DRAFT
Not Approved

(15)
December
Workshop
Date Change

Commission Chair Harrelson requested that the December 18th, 2017 Workshop be moved to take place at 5:00 P.M. on January 02, 2018 and the regular January Commission Meeting would follow Workshop, at 6:00 P.M. **Commissioner Cullen** made a motion to move the meeting and a second was provided by **Commissioner Bradshaw**.

(16)
Adjournment

There being no further business, a motion being duly made by **Commissioner Shaver** and seconded by **Commissioner Maples**, the December 04, 2017 Commission Meeting stood adjourned at 6:41 P.M.

Loudon County Commission Chair

ATTEST:

Loudon County Clerk

Loudon County Mayor

LOUDON COUNTY COMMISSION

Resolution 010218-

**RESOLUTION TO DIRECT THE LOUDON COUNTY HIGHWAY DEPARTMENT TO
PERFORM WORK FOR OTHER LOUDON COUNTY DEPARTMENTS ON LOUDON
COUNTY PROPERTIES AS DIRECTED WITH REIMBURSEMENT, IN WRITING BY
THE LOUDON COUNTY MAYOR WITH AGREEMENT OF THE LOUDON COUNTY
ROAD SUPERINTENDENT**

WHEREAS, It has been an agreement with the Road Superintendent and the Mayor that the Loudon County Highway Department has the equipment and experience necessary to assist in various projects or assist in the maintenance of County properties driveways or parking lots with reimbursement of cost.

WHEREAS, The Loudon County Road Superintendent has the right to refuse or revoke this agreement at anytime. All reimbursements will be paid at cost.

NOW, THEREFORE, BE IT RESOLVED by the county commission in regular session assembled this 2nd day of January, 2018 that:

THE LOUDON COUNTY HIGHWAY DEPARTMENT TO PERFORM WORK FOR OTHER
LOUDON COUNTY DEPARTMENTS ON LOUDON COUNTY PROPERTIES AS DIRECTED WITH
REIMBURSEMENT, IN WRITING BY THE LOUDON COUNTY MAYOR WITH AGREEMENT OF
THE LOUDON COUNTY ROAD SUPERINTENDENT.

Loudon County Commission Chair

ATTEST:

Loudon County Clerk

Loudon County Mayor

Exhibit 010218-

[illegible]

1 of 54

ROAD LIST

2016-17

ROAD NAME	LENGTH	COUNTY	CLASS &	BED	RIGHT	CURBED	LOCATION OF ROAD	SIGN	PAVEMENT	TILE	Speed Limit
	MILES	STATE AID	WIDTH	WIDTH	WAY	DE		REPLACE			Approved
							SUBDIVISIO	DATE			
ALEXIS LANE	0.33	CO	1-24'	24'	50'	N	Stonebrook subdivision HWY 70				\$ 40,128.00
ALLEN ROAD	0.2	CO	3-16'	18'	50'	DEAD END	11 BETWEEN SHAW FERRY/MUDDY CR	10/24/2012			\$ 36,802.00
ALLEN SHORE DROVE	0.5	CO	2-19.5	19'	50'	SUB	OFF HWY 321S NEAR DAM	12/13/2013		20	\$ 92,004.00
ALLISON TOWN ROAD	0.6	CO	4-12'	12'	30'	DEAD-END	OFF POND CREEK S OF DRY VALLEY	2/14/2012			\$ 110,405.00
ALPINE DRIVE	0.1	CO	1-25'	25'	50'	DEAD END	EATONWOOD SUB. OFF 321	8/14/2013			\$ 18,401.00
AMBERLY COURT	0.2	CO	1-25'	25'	50'	CURBED	AMBERLY MEADOWS	12/13/2013			\$ 36,802.00
ANCHOR DR	0.2	CO	1-25'	25'	50'	Sub	off Hwy 95 Lenoir City	7/5/1905			
ANGLEWOOD DRIVE	0.2	CO	1-23'	23'	50'	CURB/DE	OFF SHAW FERRY S OF HWY 11	12/1/2013			\$ 36,802.00
ANTIOCH CHURCH ROAD E	2.7	SA	2-19.5'	19'	50'		HWY 321 S TO UNITIA ROAD	12/1/2013		30	\$ 496,822.00
ANTIOCH CHURCH ROAD W	2.4	CO	1-21.5'	21'	50'	DEAD END	HWY 321 S TO TELLICO LAKE	12/1/2013		30/35	\$ 441,619.00
APPLEBY LANE	0.2	CO	4-12'	12'	30'		OFF EAST COAST TELLICO PKWY	12/1/2013			\$ 36,802.00
ASHFORD LN	0.1	CO	1-20'	20'	50'		OFF PARIS DR ON BEALS CHAPEL	12/1/2013			\$ 18,401.00
AVERY CIRCLE	0.7	CO	1-26'	26'	50'	CURBED	MARTEL ROAD	12/1/2013			\$ 128,206.00
AVERY STREET	0.2	CO	1-26'	26'	50'	CURBED	OFF MARTEL TO AVERY CIRCLE	11/14/2012		30	\$ 36,802.00
AXLEY CHAPEL ROAD	2.2	CO	3-17.5	17'	50'		NTL CAMPGROUND AT ECPWKY	11/1/2013			\$ 404,818.00
B											
BAILEYS ROAD	0.2	CO	2-18'	18'	50'		OFF 95 TO AXLEY CHAPEL ROAD	12/1/2013			\$ 36,802.00
BARCLAY COURT	0.1	CO	1-26'	26'	50'	DEAD END	AVALON SUBDIVISION	12/1/2013			\$ 18,401.00
BARGER ROAD	0.1	CO	3-15'	16'	30'	DEAD END	FROM WILSON RD TO DEAD END	12/1/2013			\$ 18,401.00
BARKMOOR DRIVE	0.3	CO	1-25'	25'	50'	DEAD END	OFF HWY 321 NEAR 70	8/14/2013			\$ 55,202.00
BARRIER DRIVE	0.2	CO	2-16'	16'	50'		FROM PORT MADISON TO ENGLE RD	12/1/2013			\$ 36,802.00
BAT CREEK RD	1.1	CO	3-14.6'	14.6'	50'		FROM HARRISON TO DE	11/22/2011			\$ 202,409.00
BAT CREEK ROAD E	1.3	CO	1-17'	17'	50'		FROM MONROE LINE TO HWY 72 SO	11/22/2011			\$ 239,210.00
BATTLECREEK WAY	0.16	CO	1-24'	24'	40'	CURBED SU	WARRIORS CHASE SUB HWY 70 LENOIR CITY				\$ 3,230.00
BAXTER BRIGHT RD	0.4	CO			50'	CURBED	YELLOWWOOD SUBDIVISION	3/21/2012			\$ 73,603.00
BEALS CHAPEL ROAD	2.8	SA	1-21'	22'	50'	DE	OFF MARTEL	10/25/2012			\$ 515,222.00
BEALS LANDING LANE	0.2	CO	1-24'	24'	50'	CURBED	OFF BEAL CHAPEL	10/25/2012			\$ 36,802.00
BEELER LOOP ROAD	0.4	CO	4-12'	12'	30'		NATIONAL CAMPGROUND ROAD	12/1/2013			\$ 73,603.00
BELL ROAD N	0.8	CO	4-14'	17'	50'		NEAR GREEN ACRES IN LOUDON	12/1/2013			\$ 147,206.00
BELL ROAD S	0.8	CO	4-12'	13'	50'		FROM WEST LEE HWY TO DEADEND	12/1/2013			\$ 147,206.00
BELL VIEW ROAD	0.7	CO	4-12'	12'	30'		JACKSON FERRY TO PARKWAY	12/1/2013			\$ 128,206.00
BENJAMIN DRIVE	0.2	CO	2-18'	26'	50'	SUB	OFF OLD 95 NEAR HARRISON RD	8/11/2011		25	\$ 36,802.00
BIG HILL RD	1.9	CO	2-16.5'	16'	40'		FROM 95 TO MEADOW RD W	12/1/2013		20	\$ 349,615.00
BIG SANDY ROAD	2.6	CO	1-20'	20'	50'		FORM FOSHEE RD TO COUNTY LINE	12/1/2013			\$ 478,421.00
BILL SMITH ROAD	0.4	CO	3-16'	20'	50'	DE	OFF 321 N NEAR I-75	12/1/2013		25	\$ 73,603.00
BIRD ROAD	1.2	SA	1-21'	25'	50'		FORM WILLIAMS FERRY TO BUTTER	12/1/2013		35	\$ 220,810.00
BISHOP ROAD	1.1	CO	2-19'	20'	50'		BONORE RD TO WATTS CEMETERY	2/1/2013			\$ 202,409.00
BLACK ROAD	1	CO	3-16'	16'	50'		OFF 411 NEAR MONORE CO LINE	2/1/2013			\$ 18,401.00
BLACKBERRY RIDGE ROAD	0.7	CO	1-26'	26'	50'	CURB/DE	OFF PHELPS OFF BEALS CHAPEL	11/14/2012		30	\$ 128,206.00
BLACKFOOT WAY	0.05	CO			40'	CURBED SU	WARROIRS CHASE SUB ON HWY 70 LENOIR				\$ 10,032.00
BLUE HERRON DRIVE	0.1	CO	1-24'	24'	50'	CURB/DE	MILLERS LANDING TO DEAD END	7/1/2013			\$ 18,401.00

ROAD LIST

2016-17

ROAD NAME	LENGTH MILES	COUNTY STATE AID	CLASS & WIDTH	BED WIDTH	RIGHT WAY	CURBED DE	LOCATION OF ROAD	SIGN REPLACE	PAVEMENT	TILE	Speed Limit Approved
						SUBDIVISIO		DATE			
BLUE SPRINGS ROAD	3.8	SA	1-21'	21'	50'		OFF OAKLAND RD INTO ROANE CO	6/10/2013			35 S 699,230.00
BLUE TICK LANE	0.4	CO	4-13'	21'	50'	DEAD END	OFF BUTTERMILK NEAR KNOXVILLE	7/1/2013			20 S 73,603.00
BLUFFTON RD	0.2	CO	1-25'	25'	50'	SUB	WINDRIDGE TO DE	8/1/2011			20 S 36,802.00
BONA VISTA LANE	0.1	CO	1-27'	27'	50'	SUB	LITTLE MOUNTAIN ESTATES DEND	7/5/1905			S 18,401.00
BRADSHAW HOLLOW ROAD	0.8	CO	3-16'	16'	50'	DE	OFF PROSPECT CHURCH RD	7/1/2013	2015		S 147,206.00
BRANCH ROAD	1.1	CO	4-13'	13'	30'		VONORE TO WATT CEMETERY RD	1/1/2013			35 S 202,409.00
BRANDON DRIVE	0.1	CO	3-16'	16'	50'		MIDWAY RD TO DAVIS DR	9/1/2011			30/20 S 18,401.00
BRANDYWINE DRIVE	1.1	CO	1-23'	23'	50'	CURB/SUB	HWY 70 NEAR DIXIE LEE JUN	9/1/2011			30 S 202,409.00
BRANNON ROAD	0.1	CO	4-12.6'	12'	30'		FROM OAKLAND TO MCMINN CO	7/1/2013			S 18,401.00
BREAZEALE ROAD	1.9	SA	1-16'	24'	50'		HOTCHKISS VALLEY TO E HINES VA	7/1/2013			S 349,615.00
BRENTWOOD PLACE ROAD	0.1	CO	1-26'	26'	50'		SHAW FERRY TO DEAD END HWY 11	7/1/2013			S 18,401.00
BREWSTER ROAD	0.1	CO	4-10'	12'	30'		HOTCHKISS VALLEY RD EAST	2/28/2012			S 18,401.00
BRIGHT ROAD	2.2	CO	3-15'	15'	50'		FROM JIM DYKE TO POND CREEK RD	7/1/2013			S 404,818.00
BRITTS DR	0.4	CO	1-23.5'	23'	50'	CURB/SUB	ROCKINGHAM SUBDIVISION	7/1/2013			S 73,603.00
BROOK ROAD	1.6	CO	1-21'	21'	50'		OFF 95 TO MEADOW RD WEST	7/1/2013			S 294,413.00
BROOKVIEW ROAD	0.8	CO	2-19'	19'	50'		OFF SANDY SHORE FORT LO EST 2	7/1/2013			S 147,206.00
BROWDER HOLLOW ROAD	1.6	CO	4-11'	18'	50'		HWY 11W TO HARRISON RD	6/13/2013			35 S 294,413.00
BROWDER SCHOOL ROAD	0.2	CO	1-20.5'	31'	50'		OFF HWY 11W AND BACK TO HWY 11	10/24/2012			S 36,802.00
BURL ANDERSON ROAD	0.2	CO	4-10.6'	10'	30'		OFF OAKLAND NEAR MONORE	7/1/2013			S 36,802.00
BURNETTE CIRCLE	0.4	CO	1-20'	20'	50'		OFF EAST LEE HWY AN ENGLE RD	7/1/2013			S 73,603.00
BUSTER BLVD	0.1	CO	4-12'	16'	30'	DEAD END	OFF JIM CONNER OFF MARTEL RD	11/14/2012			S 18,401.00
BUTTERMILK ROAD	5.1	SA	1-21'	28'	50'		FROM OLD 95 TO KNOX CO LINE	7/1/2013			35 S 938,441.00
BUTTERMILK ROAD W C	0.5	SA	1-28'	33'	50'		FROM 321 TO ROANE CO LINE	7/1/2013			35 S 92,004.00
C & C ROAD	0.2	CO	4-13'	13'	30'	DEAD END	OFF HICKORY CREEK RD	7/1/2011			S 36,802.00
CABE ROAD	0.5	CO	4-11.9'	11'	30'	DE	OFF MORGANTON BWT CRAIGS/FIPP	7/1/2011			S 92,004.00
CADDY DR	0.1	CO	1-25'	25'	50'	SUB	ROVERVIEW GOLF COURSE	7/1/2013			S 18,401.00
CALDWELL ROAD	1.3	CO	3-15'	15'	50'		FROM STEEKEE AT CO LINE MONORE	7/1/2013	11/1/2009		25 S 239,210.00
CALLOWAY CIRCLE	0.8	CO	1-26'	26'	50'	CURBED	OFF MARTEL	11/14/2012	4/25/2012		S 147,206.00
CALLOWAY DRIVE	0.5	CO	1-26'	26'	50'	CURBED	MARTEL ESTATES	8/14/2013			S 92,004.00
CALLOWAY ROAD	2.6	CO	3-16'	16'	50'		FROM WEST LEE HWY TO FORK CR	7/1/2013	11/1/2010		35 S 478,421.00
CAMERON LANE	0.1	CO	1-22'	22'	50'	CURB/DE	OAKWOOD ESTATES TO DEAD END	8/1/2013			S 18,401.00
CARDINAL VIEW COURT	0.1	CO	1-26'	26'	50'	CURB/DE	AVALON SUBD	8/1/2013			S 18,401.00
CARPENTER LOOP	1.1	CO	4-12.5'	12'	30'		OFF PKWY NEAR NTL CAMPGROUND	9/1/2013			S 202,409.00
CARTER DRIVE	0.8	CO					OFF ROBINSON SPRINGS TO CITY LIMITS	9/1/2013			
CARTER ROAD	0.4	CO	2-19'	19'	50'		OFF BIG HILL RD OFF HWY 95	9/1/2013			S 73,603.00
CARTER'S CHAPEL ROAD	1.3	SA	1-19'	23'	50'		HINE VALLEY TO HWY 70 TO PAW	8/20/2011			35 S 239,210.00
CARWELL CHAPEL ROAD	1.5	CO	4-14'	18'	50'		HINES VALLEY NEAR WHEAT	8/20/2011			20 S 276,012.00
CASEY LANE	0.1	CO	1-22'	22'	50'	SUB	OAKWOOD ESTATES TO DEAD END	9/1/2013			S 18,401.00
CASSIDY COURT	0.25	CO	1-23.5'	23.5'	50'	CURB/SUB	OFF HWY70	10/1/2013			S 46,002.00
CATTLEMAN'S DRIVE	0.2	CO	1-25'	25'	50'		OFF RAWHIDE TRAIL IN N FORTY EST	11/14/2012			S 36,802.00
CECIL DRIVE	0.5	CO	1-24'	24'	50'		OFF WILLIAMSON DR IN INDUSTRIAL	10/1/2013			S 92,004.00
CEDAR CIRCLE	0.6	CO	1-25'	25'	50'	CUR/SUB	OFF MARTEL CEDAR HILLS SUBD	2/1/2013			S 110,405.00

ROAD LIST

2016-17

ROAD NAME	LENGTH	COUNTY	CLASS &	BED	RIGHT	CURBED	LOCATION OF ROAD	SIGN	PAVEMENT	TILE	Speed Limit
	MILES	STATE AID	WIDTH	WIDTH	WAY	DE		REPLACE			Approved
						SUBDIVISIO		DATE			
CEMETERY ROAD	0.4	CO	3-16'	16'	50'		OFF STEEKEE RD	10/1/2013			25
CHELSEA CIRCLE	0.1	CO	1-25'	25'	50'	CURB/DE	AVALON SUBD	10/1/2013			\$ 18,401.00
CHEYENNE BLVD	0.4	CO	1-24'	24'	50'	CURB/SUB	OFF HWY70	10/24/2012			\$ 73,603.00
CHILI LANE	0.1	CO	4-14'	14'	50'		OFF POPLAR SPRINGS RD NEAR DAV	9/1/2011			\$ 18,401.00
CHRISMAN ROAD	0.2	CO	1-25'	25'	50'		OFF HWY 11E AT HIGHLAND PARK	10/24/2012			\$ 36,802.00
CIRCLE DRIVE	0.4	CO	1-24'	24'	50'		OFF STEEKEE RD NEAR WATKINS	10/1/2013			\$ 73,603.00
CLARKE ROAD	0.4	CO	2-18'	23'	50'		OFF SPRING RD OFF HARRISON RD	7/5/1905			\$ 73,603.00
CLAY HOLLOW ROAD	1.1	CO	3-16.6'	16'	50'		FROM BLUE SPRINGS TO ROANE CO	8/1/2011			30
CLEAR BRANCH ROAD N	0.5	CO	3-17'	17'	50'		OFF 72S ACROSS FROM GET GOOD	10/1/2013			\$ 92,004.00
CLEAR BRANCH ROAD S	0.3	CO	4-13'	13'	30'		OFF 72 SOUTH	3/1/2013			\$ 55,202.00
CLEAR COVE COURT	0.1	CO	1-24'	24'	50'	CURB/DE	OFF LAKE CREST RD	3/1/2013			\$ 18,401.00
CLEAR MILL DR	0.7	1-25'	25'	50'	50'	Subdivision	OAK CREEK SUBDIVISION				\$ 140,448.00
CLIFF BRANCH BLVD	0.038	1-25'	25'	50'	50'	Subdivision	OAK CREEK SUBDIVISION				\$ 7,638.00
CLINCHVIEW DRIVE	0.1	CO	1-20'	20'	50'		OFF HWY 321 N NEAR 140	9/1/2011			\$ 13,401.00
CLOYD'S CREEK ROAD	0.2	CO	3-15'	15'	30'		OFF MEADOW RD N NEAR GRyder	3/1/2013			\$ 36,802.00
CLUB DRIVE	0.4	CO	1-24'	24'	50'	CURBED	FROM HUFFS FERRY N TO DEAD END	3/1/2013			25
COBBLESTONE DR	0.28		24'	24'	50'	Subdivision	STONE CROSSEING SUB				\$ 56,202.00
COLUMBUS DRIVE	1.2	CO	1-20'	20'	50'	CURBED	OFF HINES VALLEY	11/8/2011		6/1/2011	20
CONKINNON DRIVE	1.3	CO	1-24'	24'	50'	CURBED	CONKINNON SUBDIVISION	3/1/2013			\$ 239,210.00
CONNATSER RD	0.1	CO	4-11.6'	12'	30'		OFF EAST COAST TELICO PKWY	8/1/2013			\$ 18,401.00
COOK DRIVE	0.3	CO	4-15'	15'	50'		FROM STEEKEE SCHOOL RD	8/1/2013			\$ 55,202.00
COPE ROAD	0.2	CO	3-14'	14'	30'		OFF 411 NEAR SHULTZ LN (GB)	8/1/2013			\$ 36,802.00
CORINTH CHURCH ROAD	1.5	CO	3-16'	9'	50'		FROM CALLOWAY TO STEEKEE	8/1/2013		9/1/2015	30
CORINTH ROAD	1.4	SA	1-20'	16'	50'		STEEKEE RD TO STEEKEE SCHOOLD	12/27/2016			25
CORNETT ROAD	0.421	CO	3-16'	22'	50'		OFF HOTCHKISS VALLEY N HAPPY H	2/28/2012			\$ 77,472.00
COULTER SHOALS CIRCLE	0.7	CO	2-19'	19'	50'		OFF LAKELAND DR NEAR KNOX	10/25/2012			\$ 128,805.00
COUNTY RD 298	0.2	CO	2-16.3'	16.3'	50'		SIDE	2/28/2012			\$ 36,802.00
COVE VIEW LANE	0.1	CO	1-23'	23'	50'	CUR/DE/SU	OFF POINT HARBOR DR BEALS CH	9/1/2013			\$ 18,401.00
COVENANT CIRCLE	0.4	CO	1-24'	24'	50'	CURBED	OFF HWY 11E	3/17/116			20
COX ROAD	0.2	CO	3-17'	17'	50'		FROM E LEE HWY TO WEBB DR	9/1/2013			\$ 36,802.00
COYTEE ROAD	1.3	CO	2-18'	18'	50'	DEADEND	OFF AXLEY CHAPEL TO DEAD END	9/1/2013			\$ 239,210.00
CRAIGS CHAPEL RD	2.1	CO	4-12.6'	12.6'	30'		HWY 70 E TO DE	9/1/2013			\$ 386,417.00
CRANFIELD IANE	0.1	CO	3-15'	15'	50'	CURB/DE	OFF 70 E NEAR SMITH VALLEY RD	10/24/2012			\$ 18,401.00
CREEKWOOD COURT	0.1	CO	1-24'	24'	50'		OFF RIVER POINT DR	9/1/2013			\$ 18,401.00
CRESCENT DRIVE	0.2	CO	2-18'	18'	50'		FROM E LEE HWY TO DAILEY AVE	9/1/2013			\$ 36,802.00
CRESS LANE	0.3	CO	3-17'	19'	50'	DEADEND	OFF MARTEL RD	11/14/2012			\$ 55,202.00
CRESTVIEW CIRCLE	0.6	CO	1-25'	25'	50'	CURBED	MARTEL ESTATES	8/14/2013			\$ 110,405.00
CRESTVIEW DRIVE	0.1	CO	2-18'	18'	50'		OFF FORD RD	8/14/2013			\$ 18,401.00
CROCK ROAD	0.9	CO	3-16'	25'	50'		OFF LOUDON RIDGE TO SUGARLIMB	9/1/2011	2015		25
CRUZE ROAD	0.9	CO	1-22'	22'	50'	DEADEND	OFF ANTIOCH CHURCH E	9/1/2013			\$ 165,607.00
CUDDIE LANE	0.1	CO	3-17'	17'	50'		OFF WEBB DRIVE	9/1/2013			\$ 18,401.00
CUSICK CIRCLE	0.6	CO	2-19'	21'	50'		OFF 11 NEAR OLD STAGE/JUNCTION	10/24/2012		2/15/2012	25
CUSICK LANE	0.1	CO	2-19'	21'	50'	DEADEND	OFF CUSICK CIRCLE	10/24/2012			\$ 18,401.00

ROAD LIST

2016-17

ROAD NAME	LENGTH MILES	COUNTY STATE AID	CLASS & WIDTH	BED WIDTH	RIGHT WAY	CURBED DE	LOCATION OF ROAD	SIGN REPLACE	PAVEMENT	TILE	Speed Limit Approved
						SUBDIVISIO		DATE			
D								9/1/2013			
DAILEY AVE	1.1	CO	3-16'	16'	30'		FROM BLAIR BEND DR TO WEBB DR	7/1/2011			S 202,409.00
DAIRY LANE	0.3	CO	1-24'	30'	50'	CURBED	OFF MUDDY CREEK (SILO ACRES)	8/14/2013			S 55,202.00
DAVIS DAIRY ROAD	0.3	CO	1-26'	26'	50'		OFF SUNNYSIDE N/REED SPRINGS	9/1/2013			S 55,202.00
DAVIS DRIVE	0.1	CO	4-14'	14'	30'		NEXT TO MIDWAY	10/1/2011			S 18,401.00
DAVIS FERRY ROAD	2.8	SA	1-21'	16'	50'		FROM VONORE RD TO PKWY	3/28/2012			35 S 515,222.00
DAVIS LANE	0.9	CO	2-18'	30'	50'	DEADEND	OFF BUTTERMILK N OF 140	10/11/2011			S 165,607.00
DAVIS RIDGE RD	0.4	CO	4-14'	16'	50'		BROWDER SCHOOL TO LOUDON RID	9/1/2013			S 73,603.00
DAWSON ROAD	0.8	CO	3-15'	15'	50'		FROM ERIE RD INTO ROANE CO'	9/1/2013			30 S 147,206.00
DEADEND ROAD	0.5	CO	3-14'	14'	50'		BEHIND BIMBOS	9/1/2013			S 92,004.00
DEATON ROAD	0.3	CO	3-13'	13'	30'		OFF BEALS CHAPEL RD	10/25/2012			S 55,202.00
DEEP COVE LN	0.1	CO	4-12'	12'	30'		REST CAMP RD TO DE	7/1/2011			S 18,401.00
DEERFIELD COURT	0.1	CO	1-26'	26'	50'	DEADEND	AVALON	9/1/2013			S 18,401.00
DEERFIELD LANE	0.5	CO	1-26'	26'	50'	CURB/DE	OFF NORTHSHORE DR TO KNOX	12/21/2011			S 92,004.00
DERBY CHASE DRIVE	0.8	CO	1-22'	22'	50'		OFF SUNNYSIDE	7/1/2013			S 147,206.00
DEVYN LN	0.1	CO	1-23'	23'	50'		HOLLAND TRAIL TO DE	8/12/2013			S 73,603.00
DEWITT DRIVE	0.4	CO	3-15'	16'	30'	DEADEND	OFF FORD RD	7/1/2013			20 S 73,603.00
DIXIE LEE CIRCLE	0.7	CO	3-17'	22'	50'		OFF WHEELER DR NEAR JUNCTION	7/1/2013			S 128,805.00
DIXIE LEE LANE	0.1	CO	1-29'	29'	50'	DEADEND	OFF WHEELER DR NEAR JUNCTION	7/1/2013			S 18,401.00
DIXIE MEADOWS DR	0.1	CO	1-26'	26'	50'	CURB/SUB	HARRISON LN TO DE	8/1/2011			S 18,401.00
DIXON ROAD	0.7	CO	1-22'	22'	50'		OFF OLD STAGE RD -KNOX CO	10/25/2012			S 128,805.00
DOGWOOD LANE	0.1	CO	3-16'	20'	50'	DEADEND	OFF MIMOSA ST OFF FORD RD	7/1/2013			S 18,401.00
DOGWOOD LANE E	0.1	CO	1-24'	24'	50'	CURB/DE/SU	FROM OAKWOOD EST TO DEADEND	6/1/2013			S 18,401.00
DONALDSON LIGHT LANE	0.2	CO	4-13.5'	13'	30'	DEADEND	OFF ANTIOCH CH RD E NI ALEXANDER	6/1/2013			20 S 36,802.00
DONNA DRIVE	0.4	CO	3-16'	23'	50'	DE	OFF HICKORY CREEK RD	7/3/2011			S 73,603.00
DOTSON HILL ROAD	0.3	CO	4-10'	10'	30'		FROM AXLEY CHAPEL TO DEADEND	6/1/2013			S 55,202.00
DOTSON ROAD	0.3	CO	4-10.5'	10'	20'		BETWEEN MAPLE ST AND TRIGONIA	6/1/2013			S 55,202.00
DOWNING COURT	0.1	CO	1-26'	26'	50'	CURB/DE	AVALON	5/1/2013			S 18,401.00
DRIFTWOOD COURT	0.1	CO	1-24'	24'	50'	CURB/DE	MILLERS LANDING TO DEAD END	5/1/2013			S 18,401.00
DRY BRANCH ROAD	0.3	CO	4-12'	12'	30'		OFF POND CREEK RD NEAR 175	5/1/2013			S 55,202.00
DRY RIDGE ROAD	1.7	CO	4-13'	13'	30'		FROM DRY VALLEY TO ROBERSON S	5/1/2013			S 312,814.00
DRY VALLEY ROAD	2.4	SA	1-21'	21'	50'		OFF POND CREEK RD	2/12/2012			30 S 441,619.00
DUGGAN ROAD	0.1	CO	4-11'	11'	30'	DEADEND	FROM HARMON TO DEADEND	8/14/2013			S 18,401.00
DUNCAN ROAD	0.6	CO	4-13'	13'	20'		OLD MIDWAY TO MUDDY CREEK	10/25/2012			25 S 110,405.00
DUNRIDGE LN	0.1	CO	1-27'	27'	50'		OFF BLACKBERRY RIDGE	11/14/2012			S 18,401.00
DUNSMORE ROAD	0.3	CO	4-13'	17'	30'	DEADEND	OFF CARDWELL CHAPEL	9/2/2011			25 S 55,202.00
DUTTON ROAD	1.1	CO	2-19'	25'	50'		OLD KINGSTON TO PINEGROVE/PROV	5/1/2013		12/1/2011	S 202,409.00
E								5/1/2013			
EAST COAST TELLICO PKWY	6.1	SA	1-24.9'	24'	50'		HWY 411 TO AXLEY CHAPEL	12/28/2011			45 S 1,122,449.00
EASTER DRIVE	0.2	CO	3-16'	16'	50'		BETWEEN VONORE AND SIMPSON	5/1/2013			S 36,802.00
EASTER RIDGE ROAD	0.3	CO	3-17'	20'	50'		OFF LAKEVIEW NEAR MARTEL	11/14/2012	2012		25 S 55,202.00
EATON VILLAGE TRACE	0.415	CO	20'	20'	50'						S 84,246.00
EBLEN LN	0.1	CO	1-24'	24'	50'		TRADES DRIVE HARRISON HILLS	7/5/1905			S 18,401.00

ROAD LIST

2016-17

ROAD NAME	LENGTH MILES	COUNTY STATE AID	CLASS & WIDTH	BED WIDTH	RIGHT WAY	CURBED DE	LOCATION OF ROAD	SIGN REPLACE	PAVEMENT	TILE	Speed Limit Approved	
						SUBDIVISIO		DATE				
EBLEN ROAD	0.2	CO	4-13'	22'	30'		FROM DUTTON TO OLD KINGSTON	8/14/2013			25	S 36,802.00
ECHO HOLLOW ROAD	0.4	CO	2-18'	18'	50'		FROM WHITE WING TO WILLIAMS F	8/1/2011	4/26/2012			S 73,603.00
EDGE LANE	0.1	CO	4-10'	10'	30'	DEADEND	FROM JACKSON BEND	5/1/2013				S 18,401.00
EDITH LANE	0.5	CO	3-15'	20'	50'		OFF HINES VALLEY/EATON FOREST	8/1/2011			25	S 92,004.00
EDWARDS SCHOOL ROAD	0.5	CO	3-15'	15'	50'	DE	OFF JIM DYKE W OF PROSPECT	6/1/2013				S 92,004.00
EL CAMINO LANE	0.4	CO	1-22'	22'	50'	DEADEND	OFF WATT RD N OF 140	6/1/2013				S 73,603.00
ELEVEN ESTATESDR	0.1	CO	1-18'	18'	50'		ACROSS FROM CUSICK CIRCLE	10/24/2012				S 18,401.00
ELIZABETH WAY	0.2	CO	1-22'	22'	50'	SUB/DE	OFF CRUZE RD TO DEADEND	8/1/2011				S 36,802.00
ELLIS ROAD	0.3	CO	2-19'	19'	50'		FROM OLD 95 TO OUTER DRIVE	7/22/2013				S 55,202.00
ENGLE ROAD	0.4	CO	2-19'	19'	50'		E LEE HIGHWAY TO DEAD END	10/24/2012				S 73,603.00
ERIE ROAD	2.6	CO	2-18'	18'	50'		FORM CLAY HOLLOW TO MANTOOTH	9/1/2011				S 478,421.00
ESSEX COURT	0.1	CO	4-11'	11'	30'	SUB	AVALON	6/1/2013				S 18,401.00
EVERGREEN CIRCLE	0.2	CO	2-19'	24'	50'		OFF RODNEY RD NEAR SCENIC DR	11/1/2013				S 36,802.00
F												
FAIRVIEW DRIVE	0.1	CO	3-16'	18'	50'	DEADEND	FROM FORD RD TO DEADEND	11/1/2013			20	S 18,401.00
FAIRVIEW ROAD	1.7	CO	1-20.5'	20'	50'		OFF HWY 321 S	11/1/2013			35	S 312,814.00
FAIRWAY DRIVE	0.2	CO	1-24'	30'	50'	CURBED	OFF HUFFS FERRY IN RIVERVIEW SUB	7/3/2011				S 36,802.00
FALCON FIRE	0.1	CO	1-30'	30'	50'	CURBED	AVALON	9/1/2013				S 18,401.00
FIPPS LN	0.6	CO	3-15'	15'	50'	DE	OFF MORGANTON TO DE	9/1/2013				S 110,405.00
FISHER LANE	1.8	CO	3-15.5'	15'	30'		AXLEY CHAPEL TO GLENDALE	9/1/2013				S 331,214.00
FLATWOODS ROAD	1.6	CO	4-12'	12'	30'		FROM HOLT TO NEW HOPE ERIE	7/6/2014	2016			S 294,413.00
FOGHILL LN	0.2	CO	1-22'	22'	50'	DE	HWY 321 N TO DE	9/1/2013				S 36,802.00
FOOTHILLS RD	0.4	CO	1-30'	30'	50'		OLD 95 TO DE LITTLE MNT ESTATES	7/22/2013			35	S 73,603.00
FORD ROAD	1.7	SA	1-20'	20'	50'		OFF HWY 11E TO HWY 70	11/1/2011			25/35	S 312,814.00
FORE DRIVE	0.1	CO	1-24'	30'	50'	CURBED	RIVERVIEW GOLF SUBDIVISION	10/1/2013				S 18,401.00
FOREST HEIGHTS CIRCLE	1	CO	2-19'	22'	50'		OFF MUDDY CREEK	10/25/2012				S 18,401.00
FOREST HILLS DRIVE	0.1	CO	1-20'	20'	50'		FROM FOREST HEIGHTS CIRCLE TO E	10/25/2012				S 18,401.00
FORK CREEK ROAD	3	SA	2-19'	19'	50'		WEST LEE HWY TO STEEKEE	3/7/2012			35/30	S 55,202.00
FORK ROAD	0.1	CO	3-16.5'	16'	30'		MEADOW W TO BLOUNT CO LINE	10/1/2013				S 18,401.00
FOSHEE ROAD	1.5	CO	3-16'	16'	50'		BIG SANDY TO STOCKTON VALLEY	10/1/2013			30	S 276,012.00
FOSTER DRIVE	0.4	CO	1-26'	26'	50'	CURBED	OFF MARTEL (MARTEL ESTATES E)	11/14/2012				S 73,603.00
FOSTER ROAD	1.2	CO	2-19'	25'	50'		LOUDON RIDGE TO BROWDER HOLLOW	10/1/2013				S 220,810.00
FOUNTAIN HEAD COURT	0.1	CO	1-26'	26'	50'	CURB DE	AVALON	10/1/2013				S 18,401.00
FOUTE TOWN ROAD	0.2	CO	4-11'	18'	50'	DEADEND	OFF MARTEL NEXT TO CEMETERY	10/1/2013				S 36,802.00
FOX HUNTER ROAD	0.4	CO	3-17'	22'	50'	DEADEND	OFF BEALS CHAPEL TO DEADEND	10/25/12				S 73,603.00
FRANKLIN ESTATES LN	0.4	CO	1-25'	25'	50'		GREEN BACK	12/28/2011			25	S 73,603.00
FRIENDSHIP ROAD	0.5	CO	2, 18'	23'	50'		OFF 321 N TO HWY 70	1/26/2012			20	S 92,004.00
FRIENDSVILLE ROAD	2.5	CO	2-17'	8'	50'		321 S TO BIG HILL RD	10/1/2013			25	S 478,000.00
G												
GALLAHER ROAD	0.3	CO	4-11'	11'	27'	DE	BIG SANDY TO DE	10/1/2013				S 55,202.00
GALYON DRIVE	0.1	CO	4-13'	13'	30'		HWY 11 TO BROWDER SCHOOL RD	10/24/2012				S 18,401.00
GALYON ROAD	0.6	CO	4-12'	12'	30'		POND CREEK NEAR DRY VALLEY	10/27/2013				S 110,405.00
GAP ROAD	1.1	CO	3-17'	22'	50'		OFF CORNETT	1/10/2012				S 202,409.00

ROAD LIST

2016-17

ROAD NAME	LENGTH MILES	COUNTY STATE AID	CLASS & WIDTH	BED WIDTH	RIGHT WAY	CURBED DE	LOCATION OF ROAD	SIGN REPLACE	PAVEMENT	TILE	Speed Limit Approved	
						SUBDIVISIO		DATE				
GARNETT HILL DR	0.2	CO	2-16'	16'	50'	CURBED/SU	Hwy 11 E to Deadend	9/1/2013			S	36,802.00
GASTON ROAD	0.2	CO	4-13'	17'	30'		FROM CORNETT RD	2/28/2012			25	S 36,802.00
GENTRY DRIVE	0.2	CO	3-16'	16'	30'		FROM RAUSIN TO STEEKEE CREEK	12/2/2011			S	36,802.00
GENTRY ROAD	0.8	CO	3-16'	16'	30'		OFF HINES VALLEY to DEADEND	9/1/2013			S	147,206.00
GET GOOD HOLLOW ROAD	1.8	CO	3-17'	17'	50'		OFF STEEKEE TO HWY 72 S	9/1/2013	2009		35	S 331,214.00
GETTYS ROAD	0.2	CO	4-12'	12'	50'		WASHINGTON PIKE TO DE	3/17/2016			S	36,802.00
GIFFIN CIRCLE	0.4	CO	1-25'	25'	50'		OFF MATLOCK BEND EAST	9/1/2013			S	73,603.00
GILBERT LANE	0.5	CO	3-14.5	14.5'	30'	DEAD END	OFF UNITIA RD	8/1/2011			20	S 92,004.00
GILES ROAD	0.2	CO	2-18.5,	18'	50'		OFF TINNEL NEAR HIGHLAND PARK	10/24/2012			25	S 36,802.00
GLEN MAR DRIVE	0.4	CO	1-24'	24'	50'	CURD-DE	OFF CONN KINION PT OFF PARRIS	9/1/2013			S	73,603.00
GLENDALE COMMUNITY RD	1.5	CO	3-17'	17'	50'		OFF 95 NEAR HWY 321 INERSECTION	9/1/2013			S	276,012.00
GRANADA DR	0.346	CO	1-25'	25'	50'	SUBDIVISION					S	10,260.00
GRANDVIEW DRIVE (LC)	0.3	CO	1-26'	26'	50'	CURB	OFF MARTEL IN MARTEL SUBDIVI.	9/1/2013			S	55,202.00
GRANDVIEW DRIVE (LO)	0.5	CO	4-14'	14'	30'		GETGOOD HOLLOW	9/1/2013	2009		25	S 92,004.00
GREEN DRIVE	0.5	CO	1-23'	23'	50'		STEEKEE CREEK TO GRIMES	8/1/2011			25	S 92,004.00
GRIFFITS KEEP COURT	0.2	CO	1-23'	23'	50'	CURBED	E COAST PKWY TO DEADEND	9/1/2013			S	36,802.00
GRIMES ROAD	1.9	CO	3-17'	17'	50'		GREEN ACRES SUB TO CORINTH CH	9/1/2013	11/1/2010		35	S 349,615.00
GRUBB LANE	0.1	CO	4-14'	20'	30'		OFF OVERLOOK NEAR OLD 95	12/27/2011			S	18,401.00
GRUBB ROAD	0.8	CO	4-14'	20'	50'		BUTTERMILK TO WOODLAWN	9/1/2013	2013		S	147,206.00
GRYDER LANE	0.6	CO	2-19'	19'	50'		OFF MEADOW W BT FORK/SHEETS H	4/1/2013			S	110,405.00
GUNTER DR	0.05	CO	2-16'	16'	50'	CURBED/SU	Garnet Hill to Deadend	4/1/2013			S	18,401.00
H												
HACKNEY CHAPEL ROAD	0.7	SA	4-13.5'	13.5'	30'		FROM ANTIOCH E TO VINEYARD	4/1/2013			20	S 128,806.00
HALL ROAD	1	CO	1-22'	29'	50'		PINE GROVE/PROV TO ROANE CO	8/1/2011		12/1/2011	30	S 18,401.00
HALL STREET	0.7	CO	3-16'	16'	50'		FROM HWY 11E TO HIGHLAND PARK	7/1/2013			S	128,805.00
HAMMONTREE LANE	0.3	CO	4-11'	17'	30'		OFF BROOKRD	7/1/2013			S	55,202.00
HAPPY HOLLOW ROAD	2.7	SA	3-17'	28'	50'		FROM OLD 95 TO HOTCHKISS VAL	7/22/2013	2013		30	S 479,000.00
HARBOR POINT COURT	0.1	CO	1-24'	24'	50'	CURB-DE	LAKECREST DR TO DE MILLERS LAN	7/1/2013			S	18,401.00
HARBOUR PLACE	0.1	CO	1-23'	23'	50'	CURB-DE	POINT HARBOR SUBDIVISION	7/1/2013			S	18,401.00
HARBOUR VIEW DRIVE	0.7	CO	1-25'	28'	50'	CURB	OFF BEALS CHAPEL	7/1/2013			S	128,805.00
HARDIN DRIVE	0.4	CO	2-18'	22'	50'		HARDIN ESTATES OFF MARTEL	11/14/2012			25	S 73,603.00
HARMON LANE	0.2	CO	1-20'	25'	50'	DEADEND	OFF 321N	9/24/2012			20	S 36,802.00
HARRIS ROAD	1.5	CO	3-17'	17'	50'		POND CREEK TO WASHINGTON PK	6/1/2013			S	276,012.00
HARRISON BEND	1	CO	2-17.9'	17.9'	50'		W FORT HILL TO DE	6/1/2013			30	S 18,401.00
HARRISON CEMETERY	0.4	CO	4-10'	10'	30'		HARRISON RD	6/1/2013			S	73,603.00
HARRISON LANE	1	CO	3-14'	19'	50'		OFF HWY 70 & 11 TO JUNCTION	7/1/2011	2016		25	S 18,401.00
HARRISON RD	0.5	CO	3/15'	15'	30'		FROM HARRISON LN TO KNOX LINE	10/24/2012			S	92,004.00
HARRISON ROAD	2.4	CO	3-14'	27'	50'		OFF 95	12/12/2011			S	481,536.00
HARVEY RD	0.2	CO	3-14"	27"	50'		OFF NORTHSHORE DR TO KNOX	10/25/2012			S	40,128.00
HATLEY DRIVE	0.3	CO	4-11'	15'	30'	DEADEND	FROM HWY 11 TO DEAD END	10/24/2012			S	60,192.00
HATTERAS CR	0.5	CO	1-23.8'	23.8'	50'	CURB/SUB	ROCKINGHAM SUBDIVISION	8/1/2013			S	100,320.00
HEAPE RD	0.2	CO	4-10'	10'	30'		SIMPSON TO DE	8/1/2013			S	40,128.00
HEATHER LANE	0.1	CO	1-20'	22'	50'	DEADEND	OFF SIMPSON RD	1/0/1900			S	20,064.00

ROAD LIST

2016-17

ROAD NAME	LENGTH MILES	COUNTY STATE AID	CLASS & WIDTH	BED WIDTH	RIGHT WAY	CURBED DE	LOCATION OF ROAD	SIGN REPLACE	PAVEMENT	TILE	Speed Limit Approved	
							SUBDIVISIO	DATE				
HEATON ROAD	0.3	CO	4-13'	14'	30'	DE	NTL CAMPGROUND TO DEADEND	8/1/2013				S 60,192.00
HEWINS ROAD	0.3	CO	4-12'	15'	30'	DE	SHAW FERRY NEAR SIMPSON E	10/25/2012				S 60,192.00
HICKORY CREEK ROAD	2.6	SA	1-21'	28'	50'		OFF HWY70	7/1/2011		12/1/2011	35-30-15	S 521,664.00
HICKORY VALLEY ROAD	0.4	CO	1-20'	20'	50'		FROM 321 S TO UNITIA RD	8/1/2011				S 73,603.00
HIDDEN OAKS DR	0.3	CO	1-24'	24'	50'		OFF LENORE DR	8/14/2013			20	S 60,192.00
HIDDEN VALLEY LANE	0.1	CO	3-16'	20'	50'	DE	FORD RD	8/20136			20	S 20,064.00
HIDDEN VALLEY ROAD	0.1	CO	3-16'	20'	50'		OFF TOWN CREEK ON FORD RD	8/1/2013			20	S 20,064.00
HIGHLAND AVENUE	0.8	CO	4-12'	12'	30'		STEEKK RD	8/1/2011				S 160,512.00
HIGHLAND PARK DRIVE	0.4	CO	1-23'	23'	50'		321 TO HWY 11	8/1/2011				S 73,603.00
HILLSBOROUGH LANE	0.2	CO	1-22'	22'	50'		FROM MORTON RD TO DEADEND	10/25/2012				S 40,128.00
HILLTOP DR	0.5	CO	1-24'	24'	50'		OFF HWY 11 NEAR LENOIR CITY	9/1/2011			25	S 100,320.00
HINES VALLEY ROAD	5.9	SA	1-26'	24'	50'		OFF HWY 70	8/1/2013			30-45	S 1,183,776.00
HIRST CIRCLE	0.7	CO	1-24'	24'	50'	CURBED	MAHLON PLACE SUBDIVISION	10/24/2012				S 140,448.00
HOFFMAN DRIVE	0.2	CO	4-11'	17'	50'		OFF OUTER DR TO ELLIS	7/22/2013				S 40,128.00
HOFFMAN LANE	0.1	CO	4-11'	17'	30'		OFF SNODDERLY	7/22/2013	2017			S 20,064.00
HOLBROOK AVENUE	0.2	CO	1-22'	30'	50'		ACROSS FROM FRIENDSHIP/321	7/22/2013			25-35	S 40,128.00
HOLLAND TRAIL	0.7	CO	2-19'	23'	50'	Subdivision	HARDIN ESTATE	10/25/2012			25	S 140,448.00
HOLLYLEAF LN	0.051		1-		50'	SUBDIVISION						S 69,426.00
HOLT ROAD	0.6	CO	3-17'	17'	50'		OFF STOCKTON VALLEY TO OAKLA	9/1/2011	2009			S 120,384.00
HOPE CREEK ROAD	0.9	CO	3-16'	16'	50'	DE	OFF BUTTERMILK NEAR DAVIS LN	9/1/2011			25	S 180,576.00
HOTCHKISS VALLEY LANE	0.2	CO	1-25'	30'	50'	DE	NEAR SUGAR LIMB RD	8/14/2013				S 40,128.00
HOTCHKISS VALLEY ROAD E	4.6	SA	1-20'	33'	50'		FROM OLD 95 TO PINE GROVE/PROV	7/22/2013	4/26/2012	12/1/2011	35	S 922,944.00
HOTCHKISS VALLEY ROAD W	1.7	CO	1-20'	29'	50'		SOUTH SIDE OF INTERSTATE	8/13/2013	2016		45	S 341,088.00
HOUKROAD	0.2	CO	4-9'	20'	50'	DE	OFF HINES VALLEY	9/1/2011				S 40,128.00
HUBBARD ROAD	1.8	CO	3-16'	36'	50'	DE	LOUDON RIDGE RD	9/1/2013				S 361,152.00
HUFFS FERRY ROAD N	1.8	CO	1-20'	35'	50'		HOTCHKISS VALLEY TO RIVER	9/1/2013			35	S 361,152.00
HUGHES ROAD	0.2	CO	1-20'	20'	50'		FROM APPLEBY RD TO DE	9/1/2013				S 40,128.00
HUNTSVILLE HOLLOW ROAD	1.1	CO	4-16'	21'	30'		OFF HWY 11 NEAR W LENOIR CITY	9/1/2011				S 220,704.00
HUTTON ROAD	0.6	CO	3-15'	15'	30'		OFF 95 S NEAR 411	9/1/2013				S 120,384.00
I								9/1/2013				
INDEPENDENCE LANE	0.1	CO	4-12'	14'	30'		MARTEL RD TO DEADEND	8/1/2011				S 20,064.00
INTERSTATE LANE	0.6	CO	3-16'	26'	50'	DE	ACROSS FROM HOTCHKISS V WEST	8/13/2013	2015		25	S 120,384.00
IRENE LANE	0.3	CO	1-24'	24'	50'		RITCHEY RD TO DEAD END	7/1/2013				S 60,192.00
J								7/1/2013				
JACKSON BEND ROAD	1.5	CO	2-19.5'	19'	50'		OFF 321 S NEAR DAM	7/1/2013	2011			S 300,960.00
JACKSON CEMETERY ROAD	0.4	CO	2-18'	18'	50'		PWKY TO DEAD END	6/1/2013				S 73,603.00
JACKSON FERRY ROAD	1.6	CO	3-16.5'	16'	50'		FROM 95S OF NTL CAMPGR TO PKY	6/1/2013			25	S 321,024.00
JACOBS ROAD	0.5	CO	4-10'	10'	30'	DEAD END	NEAR NT ZION CHURCH	6/1/2013	2009		15	S 100,320.00
JAMES DRIVE	0.3	CO	1-26'	26'	50'	CURB -DE	OFF AVERY CR	11/12/2012				S 60,192.00
JAMES RIDGE RD	0.5	CO	1-24'	24'	50'	Subdivision	DRY VALLEY TO DEADEND	11/1/2013				S 100,320.00
JESSIE LANE	0.2	CO	1-27'	27'	50'	CURB	OFF MISTY RIDGE OFF VIRTUE	11/14/2012				S 40,128.00
JIM CONNER ROAD	0.2	CO	4-12'	16'	30'	DE	OFF MARTEL BETWEEN AVERY/HAR	11/14/2012			15	S 40,128.00
JIM DYKE ROAD	1.5	CO	3-17'	17'	50'		PROSPECT CH TO STOCKTON VAL	11/1/2013				S 300,960.00

ROAD LIST

2016-17

ROAD NAME	LENGTH MILES	COUNTY STATE AID	CLASS & WIDTH	BED WIDTH	RIGHT WAY	CURBED DE	LOCATION OF ROAD	SIGN REPLACE	PAVEMENT	TILE	Speed Limit Approved
						SUBDIVISIO		DATE			
JIM HARTSOOK DR	0.1	1-23'	23'	50'	50'		ROGERS CIRCLE TO DE	11/1/2013			S 20,064.00
JOHNSON CHURCH ROAD	0.3	SA	3-16'	16'	50'		BLUE SPRINGS TO ROANE CO	8/1/2011			S 60,192.00
JONES RD	1	CO	2-17'	17'	50'		321 TO ROANE CO LINE	9/1/2013	2013		30 S 20,064.00
JULIP LANE	0.2	CO	2-18'	18'	50'		FROM DERBY CHASE TO DEADEND	9/1/2013			S 40,128.00
K											
KAGLEY DR	0.1	CO	4-11'	11'	30'		LEE HI ST TO DE	7/1/2013			S 20,064.00
KASH RD	0.4	CO	4-12'	12'	30'	DEADEND	OFF BIRD RD	7/1/2013			S 73,603.00
KEATON ROAD	0.3	CO	4-10'	10'	20'	DE	OFF UNITIA RD	8/1/2011			S 60,192.00
KEENER LANE	0.3	CO	4-12'	12'	20'	DE	OFF LAKELAND DR NEAR SUBDIVIS	10/25/2012			S 60,192.00
KENNY BROOK LANE	0.2	CO	4-10.5'	15'	30'		OFF BROOK RD E OF HAMMONTREE	8/1/2013			S 40,128.00
KERRST	0.1	CO	4-14'	14'	30'		OFF NEWTON RD	8/1/2011			S 20,064.00
KEVIN LANE	0.3	CO	1-24'	24'	50'	CURBED	FROM HWY 11 TO DEAD END	11/21/2011			S 60,192.00
KIMBRELL ROAD	0.7	CO	4-12'	12'	30'		BIG HILL RD TO DEADEND	8/1/2011	4/26/2012		20 S 140,448.00
KIMERSON COURT	0.1	CO	1-27'	27'	50'	CURBED	AVALON	8/1/2011			S 20,064.00
KING ROAD	0.8	CO	3-15'	15'	50'		NTL CAMPOUND TO BELLVIEW	8/1/2012			S 160,512.00
KINSER LANE	0.1	CO	3-16'	16'	50'		OFF 411 TO RUDD RD	9/1/2013			S 20,064.00
KISER LANE	0.3	CO	3-15'	15'	50'	DE	FROM KISER RD TO DE	11/1/2013			S 60,192.00
KISER ROAD (LO)	1.1	CO	3-15'	15'	50'		FROM REED SPRINGS TO RAUSIN	11/1/2013			S 220,704.00
KISER STATION ROAD (GB)	0.8	CO	3-15'	15'	50'		FROM UNITA TO SR321	8/1/2011			S 160,512.00
KYKER RD	0.1	CO	4-12'	12'	30'		411 TO DE	1/0/1900			S 20,064.00
L								11/1/2013			
LAKE COVE ROAD	0.3	CO	1-24'	24'	50'	CURBED	OFF MILLER RD	11/1/2013			S 60,192.00
LAKE CREST DRIVE	1	CO	1-24'	24'	50'	CURBED	OFF RIVER POINT DR	1/1/1900			S 20,064.00
LAKE DRIVE	0.7	CO	2-19'	19'	50'	DE	OFF MATLOCK BEND E	12/12/2011			25 S 140,446.00
LAKE FOREST DRIVE	0.2	CO	1-21'	21'	50'	DE	OFF LAKELAND	11/1/2013			S 40,128.00
LAKE HARBOUR DRIVE	0.4	CO	1-24'	24'	50'	CURB-DE	OFF LAKE CREST (MILLERS LAND)	11/1/2013			S 73,603.00
LAKE POINT DRIVE	0.1	CO	2-18'	18'	50'	CURB -DE	OFF WILKERSON OFF PALMER	10/25/2012			S 20,064.00
LAKELAND DRIVE	2.7	SA	1-20'	21'	50'		OFF BEALS CHAPEL TO KNOX CO	10/25/2012			35 S 541,728.00
LAKELAND FARMS ROAD	0.4	CO	4-12'	14'	30'	DE	E OF LAKE FOREST DRIVE	10/25/2012			S 73,603.00
LAKESIDE DRIVE	1.4	CO	2-18'	18'	50'		OFF BEALS CHAPEL TO PHELPS RD	10/25/2012			S 280,896.00
LAKEVIEW ROAD	1.7	CO	1-23'	23'	50'		MARTEL TO BEALS CHAPEL	11/1/2013			35 S 341,088.00
LAKEWOOD DRIVE	0.6	CO	3-16'	16'	50'	DE	OFF MATLOCK BEND E	12/12/2011			S 120,384.00
LANE ROAD	0.2	CO	3-16'	17'	30'	DE	OFF 11 NEAR FORD RD	12/8/2011			S 40,128.00
LARUE ROAD	0.1	CO	3-16'	17'	30'		E LEE HWY TO BURNETT CR	10/24/2012			S 20,064.00
LAURA LANE	0.1	CO	4-13.5'	13'	30'		OFF UNITIA NEAR BLOUNT	8/1/2011			S 20,064.00
LEE HI LANE	0.1	CO	2-18'	21'	50'		OFF 11 E OF HALL ST TO DEADEND	11/1/2013			S 20,064.00
LEE HI STREET	0.2	CO	3-15'	15'	50'		HWY 11E TO DE	7/1/2011			S 40,128.00
LEE SHIRLEY ROAD	0.2	CO	1-20'	20'	50'		FROM TRIGONIA TO BLOUNT	2/2/2012			S 40,128.00
LEEPER PARKWAY	0.2	CO	1-26'	26'	50'	CURB	OFF 11 TO AVERY ST	10/24/2012			S 40,128.00
LEEPERS FERRY ROAD	0.5	CO	1-23'	23'	50'		OFF ROAX NEAR BLOUNT	11/1/2013			25 S 100,320.00
LENNOX COURT	0.1	CO	1-26'	26'	50'	CURB -DE	AVALON	11/1/2013			S 20,064.00
LENORE DRIVE	0.1	CO	1-26'	26'	50'	CURB	FORT LOUDON ESTATES	8/13/2013			S 20,064.00
LEONA DRIVE	0.3	CO	1-21.5'	21'	50'	CURB/SUB	OFF SCENIC DR NEAR DAM 321 S	11/1/2013			S 60,192.00

ROAD LIST

2016-17

ROAD NAME	LENGTH MILES	COUNTY STATE AID	CLASS & WIDTH	BED WIDTH	RIGHT WAY	CURBED DE	LOCATION OF ROAD	SIGN REPLACE	PAVEMENT	TILE	Speed Limit Approved
						SUBDIVISIO		DATE			
LETTERMAN ROAD	0.1	CO	4-14'	28'	50'		HWY 70 NEAR 175 OVERPASS	10/24/2012			\$ 20,064.00
LINDER LANE	0.1	CO	1-24'	24'	50'	CURB-DE	OFF HWY 70 NEAR MUDDY CREEK	10/24/2012			\$ 20,064.00
LINGENFELTER LANE	0.1	CO	1-20'	20'	50'	CURB -DE	OFF PINECREST TO DEADEND	10/24/2012			\$ 20,064.00
LITTLE MOUNTAIN LANE	0.5	CO	1-26'	26'	50'	SUB/CURBI	LITTLE MNT ESTATES	11/1/2013			\$ 100,320.00
LITTLE SHUBERT ROAD	0.1	CO	4-11'	11'	30'	DE	OFF JIM DYKE	11/1/2013			\$ 20,064.00
LITTLE VALLEY ROAD	1.8	CO	3-17'	17'	50'		OFF POPLAR SPRINGS N/DAVIS FER	11/1/2013	2013		\$ 361,152.00
LITTLETON DR	0.2	CO	3-16'	16'	50'	DE	72S TO DEADEND	12/1/2013			\$ 40,128.00
LLOYD LN	0.1	CO	1-24'	24'	50'		SHARP ESTATES	12/1/2013			\$ 20,064.00
LONG COVE COURT	0.3	CO	1-24'	24'	50'	CURB -DE	OFF LAKE COVE RD	12/1/2013			\$ 60,192.00
LONG ROAD	0.2	CO	3-15'	16'	50'		OFF HACKNEY CHAPEL	12/1/2013			\$ 40,128.00
LOU GODDARD LANE	0.3	CO	3-17.5'	18'	50'		FORM TARWATER TO BLOUNT CO	11/22/2011	2011		\$ 60,192.00
LOUDON RIDGE ROAD	2.6	SA	2-19'	31'	50'		OFF SUGARLIMBI HARRISON RD	7/22/2013			\$ 521,664.00
LUCY LANE	0.1	CO	4-13.6'	13'	30'		OFF NICHOLS RD	12/1/2013			\$ 20,064.00
LYNN ROAD	1.3	CO	3-16'	16"	50"		OFF STOCKTON VALLEY	8/1/2011	8/1/2011		\$ 25 260,832.00
LYNN WOOD DRIVE	0.7	CO	1-20'	20'	50'		N TRIGONIA TO LEE SHIRLEY RD	2/2/2012			\$ 30 140,446.00
M								12/1/2013			
MALONE ROAD (LC)	0.9	SA	3-17'	17'	50'		OFF HINES VALLEY	8/1/2011			\$ 30 180,576.00
MALONE ROAD (LO)	1.2	SA	3-16'	16'	50'		HWY 72S TO WATKINS	9/1/2013	2009		\$ 25 240,766.00
MANIS ROAD	0.6	CO	3-15.5'	17'	50'		OFF 321 BETWEEN EATONS & 140	10/1/2013	2011		\$ 120,384.00
MAPLE HILL ROAD	1.4	SA	1-20'	20'	50'		OFF DAVIS FERRY RD	10/1/2013			\$ 35 280,896.00
MAPLE HILLS LANE	0.4	CO	1-24'	24'	50'	CURBED	MAPLE HILL HEIGHTS SUBDIVISION	10/1/2013			\$ 73,603.00
MAPLETREE LANE	0.1	CO	1-24'	24'	50'	CURB -DE	MARTEL/OAKWOOD ESTATES	10/1/2013			\$ 20,064.00
MARBLE BLUFF ROAD	1.3	SA	1-24'	24'	50'		OFF 72 N	10/1/2013	Sep-15		\$ 30 260,832.00
MARKWOOD ROAD	1	CO	2-20'	20'	50'		FROM WADE RD TO MONORE CO	10/1/2013	11/1/2009		\$ 30 20,064.00
MARTEL ROAD	4.2	SA	1-21'	21'	50'		FROM 11 E NEAR 321 TO KNOX CO	1/10/2012		7/3/1905	\$ 35/45 842,688.00
MASHBURN DRIVE	0.4	CO	4-13'	13'	30'	DE	OFF BEALS CHAPEL N/ LAKELAND	10/25/2012			\$ 20 73,603.00
MATLOCK BEND ROAD	4.7	CO	3-17'	17'	50'	DE	FROM 72 AT TN RIVER	9/1/2013	2012	12/8/2011	\$ 20 943,008.00
MATLOCK BEND ROAD E	1.9	CO	3-16'	16'	50'		FROM RIVER RD TO CORPRATE PARK	12/12/2011	2012		\$ 361,216.00
MATLOCK ROAD	0.6	CO	3-17'	19'	50'		WILLIAMS FERRY TO ECHO HOLLOW	12/1/2013			\$ 120,384.00
MATLOCK SHORES ROAD	0.25	CO	4-10'	10'	30'		FROM RIVER RD TO CORPRATE PARK	12/1/2013	2016		\$ 50,160.00
MATLOCK TRAIL	0.3	CO	4-14.5'	16'		DE	2ND LEFT OFF MATLOCK BEND	12/1/2013			\$ 20 60,192.00
MAYO ROAD	0.8	CO	4-14'	14'	30'		OFF 72 S NEAR VILLIAGE	12/1/2013			\$ 25 160,512.00
MCDANIEL LANE	0.2	CO	3-16'	20'	50'	DE	OFF FORD RD NEAR MIMOSA	12/1/2013			\$ 40,128.00
MCGHEE ROAD	0.6	CO	3-15'	15'	30'		NILES FERRY TO TRIGONIA	2/2/2012			\$ 20 120,384.00
McKAYMIE LANE	0.1	CO	1-24'	24'	50'		AMBERLY MEADOWS	12/1/2013			\$ 20,064.00
MCKELVEY ROAD	0.7	CO	3-15'	15'	30'		OFF PKWY NEAR COYTEE	2/1/2013			\$ 140,446.00
MEADOW DRIVE	0.3	CO	1-26'	26'	50'	CURBED	FROM CRESTVIEW CR MARTEL SUB	8/13/2013			\$ 60,192.00
MEADOW ROAD	2.6	SA	1-20.5'	20'	50'		OFF MEADOW W TO BLOUNT CO	2/1/2013	2013		\$ 30 521,664.00
MEADOW ROAD W	5.3	SA	2-19.5'	19'	50'		HWY 321 S AT BLOUNT CO LINE	2/1/2013	5/30/2012		\$ 30 541,728.00
MEADOW WALK LN	0.34	CO	1-25'	25'	50'	SUB					
MEALER ROAD	0.6	CO	2-19'	19'	50'		OFF 70 TO HINES VALLEY	8/1/2011	2017		\$ 120,384.00
MERILLOT COURT	0.1	CO	1-23'	23'	50'	CUR/DE/SU	VINEYARD COVE SUBDIVISION	8/1/2011			\$ 20,064.00

ROAD LIST

2016-17

ROAD NAME	LENGTH MILES	COUNTY STATE AID	CLASS & WIDTH	BED WIDTH	RIGHT WAY	CURBED DE	LOCATION OF ROAD	SIGN REPLACE	PAVEMENT	TILE	Speed Limit Approved
						SUBDIVISIO		DATE			
MIDWAY ROAD	0.8	CO	3-17'	19'	50'		OFF 11 S OF JUNCTION	8/1/2011			S 160,512.00
MILLER ROAD	0.3	CO	1-24'	24'	50'	CURBED	OFF BEALS CHAPEL TO LAKELAND	8/1/2011			25 S 60,192.00
MILLERS COVE LANE	0.3	CO	1-24'	24'	50'	CURBED	OFF STEEKEE RD NEAR FORK CREEK	8/1/2011			S 60,192.00
MIMOSA STREET	0.1	CO	3-16'	20'	50'	DE	OFF FORD RD	2/1/2013			S 20,064.00
MISTY RIDGE DRIVE	0.3	CO	1-27'	27'	50'	CURBED	OFF VIRTUE E OF MUDDY CREEK	11/14/2012			S 60,192.00
MISTY RIDGE WAY	0.3	CO	1-24'	24'	50'	CURBED	OFF VIRTUE E OF MUDDY CREEK	11/14/2012			S 60,192.00
MISTY VIEW DRIVE	0.2	CO	1-24'	24'	50'	CURBED	OFF RIVERVIEW DR NEAR HUFF FERRY	11/14/2012			S 40,128.00
MOATSWELL RD	0.2	CO	3-15'	15'	30'		STEEKEE CREEK TO MONORE	2/1/2013			S 40,128.00
MONTCREST DRIVE	0.2	CO	3-15'	15'	30'	Subdivision	UTILE MOUNTAIN ESTATES DEND	7/22/2013			S 40,128.00
MONTEICELLO DRIVE	0.1	CO	1-24'	24'	50'		FOOTHILLS RD TO DEADEND	7/22/2013			S 20,064.00
MONTERY DRIVE	0.3	CO	1-24'	24'	50'		1ST LEFT OFF CORPORATE PARK	10/1/2013			S 60,192.00
MONTOOTH ROAD	0.5	CO	3-15.6'	16'	50'		FROM OAKLAND BACK TO ERIE	10/1/2013			S 100,320.00
MONTVIEW ROAD	0.7	CO	1-25'	25'	50'		OFF 321 N NEAR MANIS	7/1/2013			35 S 140,446.00
MONUMENT STREET	0.1	CO	4-12'	12'	20'		OFF 11 E	7/1/2013			S 20,064.00
MOONRUN LN	0.1	CO	4-10'	10'	30'		OFF HAMMONTREE	7/1/2013			S 20,064.00
MORGANTON CEMETERY RD	0.5	CO	1-22'	22'	50'		FROM E COAST PKWY	7/1/2013			S 100,320.00
MORGANTON ROAD	4.2	SA	1-20.5'	20'	50'		BLOUNT TO PKWY	12/12/2011		5/12/2014	S 842,688.00
MORTON LANE	0.2	CO	4-14'	14'	30'	DE	OFF MORTON RD N/ VIRTUE	10/25/2012			S 40,128.00
MORTON ROAD	1.3	CO	4-14'	16'	50'		FROM MARTEL TO VIRTUE N/KNOX	10/25/2012			S 260,832.00
MOSS ROAD	0.8	CO	2-18'	18'	50'		OFF BLUE SPRINGS /MCMINN CO	9/1/2011	2011		30 S 160,512.00
MOUNTAIN CREST LN	0.2	CO	1-25'	25'	50'		OFF PETERSON TO FRANKLIN EST	7/1/2013			S 40,128.00
MOUNTAIN VIEW ROAD	0.5	CO	1-25.5'	24'	50'	Sub/Cur/DE	OFF SPRING OFF HARRISON	7/8/2011			25 S 100,320.00
MT. ZION CHURCH ROAD	0.5	CO	3-16'	16'	50'		FROM DAVIS FERRY TO MAPLE HILL	8/1/2011	11/11/2009		25 S 100,320.00
MUDDY CREEK ROAD	1.4	SA	1-23'	26'	50'		FROM MARTEL TO HWY 11	10/1/2011			35 S 280,896.00
MURRY'S CHAPEL ROAD	0.9	CO	3-17'	17'	50'		FROM OAKLAND TO MONROE	9/1/2013			35 S 182,096.00
MYERS ROAD (LC)	0.5	CO	3-17'	17'	50'		TOWN CREEK W TO SIMPSON	9/1/2013	2015		S 100,320.00
MYRTLE ROAD	0.4	CO	4-13'	13'	30'		OFF RITCHIE TO DEAD END	1/26/2012			S 73,603.00
N								9/1/2013			
N WILKERSON ROAD	0.2	CO	1-19'	19'	40'	CURBED	OFF BEALS CHAPEL	10/24/2012			S 40,128.00
NATIONAL CAMPGROUND RD	1.6	SA	1-24.3'	24'	50'		FROM 95 TO PKWY	10/1/2013			35 S 321,024.00
NEELEY ROAD	0.1	CO	4-10'	12'	20'	DE	OFF 11 E NEAR SHAW FERRY	10/24/2012			S 20,064.00
NESS LANE	0.3	CO	4-12.6'	12.6'	30'		FROM 95 TO HAMMONTREE	10/1/2013			S 60,192.00
NEW HOPE ROAD	2.3	CO	2-18'	18'	50'		FROM POND CREEK TO MONROE	2/28/2012			S 461,552.00
NEW MACEDONIA ROAD	0.2	CO	2-18'	18'	50'		OFF STEEKEE INTO MONROE	9/1/2013			S 40,128.00
NEWBERRY DRIVE	0.5	CO	3-17'	17'	50'		OFF YEDEAR RD NORTH END	9/1/2013			S 100,320.00
NEWTON ROAD	0.2	CO	3-17'	17'	50'		BETW/HIGHLAND AVE/RIVERVIEW RD	8/1/2011			S 40,128.00
NICHOLS ROAD WITH 200'EX	0.4	CO	4-13'	14'	30'	DE	OFF NORTHSHORE DR TO KNOX	10/25/2012			20 S 73,603.00
NILES FERRY ROAD	2.1	CO	1-20'	20'	50'		FROM 411 BACK TO 411	2/2/2012			30 S 421,424.00
NORTH HOLSTON DRIVE	0.4	CO	3-17'	17'	50'		OFF 321 S RUNS PARALLLEL TO 321	9/1/2013			S 73,603.00
NORTH TRIGONIA ROAD	2.5	CO	1-20'	20'	50'		411 S TO TRIGONIA	2/14/2012			30 S 501,680.00
NORTHSHORE DRIVE	2.1	SA	1-21'	23'	50'		lenoir city to knox county line (beals chapel)	10/25/2012			S 421,424.00
NORTHVIEW DRIVE	0.3	CO	1-26.5'	27'	50'	CURB/DE	OFF OLD 9S/NORTHVIEW ESTATES	7/22/2013			S 60,192.00
O											

ROAD LIST

2016-17

ROAD NAME	LENGTH MILES	COUNTY STATE AID	CLASS & WIDTH	BED WIDTH	RIGHT WAY	CURBED DE	LOCATION OF ROAD	SIGN REPLACE	PAVEMENT	TILE	Speed Limit Approved	
						SUBDIVISIO		DATE				
OAK CHASE BLVD	1.6	CO	1-25'	25'	50'	SUB/CURB	OFF 70 AVALON SUB	12/28/2011				S 321,024.00
OAK GROVE ROAD	0.7	CO	1-21'	21'	50'	DE	OFF HOTCHKISS VALLEY	5/31/2012				S 140,446.00
OAKLY GLENN LANE	0.2	CO	1-24'	24'	50'	CURBED	SUB	8/1/2013				S 40,128.00
OAKWOOD ESTATES DRIVE	0.8	CO	1-24'	24'	50'	CURBED	OFF MARTEL	8/1/2013			25	S 160,512.00
OLD BAILY ROAD	0.2	CO	4-11'	11'	20'	DEADEND	OFF BEALS CHAPEL	10/25/2012				S 40,128.00
OLD FARM ROAD	0.4	CO	1-25'	25'	50'	CURB/SUB	OFF COLUMBUS DR	8/1/2011				S 73,603.00
OLD GREENBACK ROAD	0.7	CO	3-16.5'	16'	50'		OFF 321 S ACROSS FROM SCENIC DR	8/1/2013		7/1/2011		S 140,446.00
OLD HICKORY LN	0.5	CO	25-Jan	25'	50'	SUB	JACKSON CROSSING SUBDIVISION					
OLD HOLLOW ROAD	0.8	CO	3-17'	17'	50'		FROM VONORE RD TO BRANCH RD	9/1/2013				S 160,512.00
OLD HWY95	2.4	SA	1-23'	23'	50'		FROM 9TH AVE TO HWY 70	7/22/2013	2013			S 474,963.00
OLD KINGSTON ROAD	2.4	SA	1-23.5'	30'	50'		FROM HOTCHKISS VALLEY W/ROANE	9/1/2013		12/1/2011		S 474,963.00
OLD LEE HWY	0.4	CO	2-18'	18'	50'		FROM W LEE TO MONORE CO	9/1/2013			30	S 73,603.00
OLD MCTEER RD	0.2	CO	4-10'	12'	20'		WADE RD E TO DEADEND	9/1/2013				S 40,128.00
OLD MIDWAY ROAD	1.1	CO	3-17'	17'	50'		FROM 11 E TO MUDDY CREEK	10/24/2012		12/1/2011	30	S 220,744.00
OLD NILES FERRY PIKE	0.1	CO	1-20'	20'	50'		FROM THOMPSON BRIDGE TO BLOUNT	9/1/2013				S 20,064.00
OLD SINKING CREEK ROAD	0.6	CO	4-12.5'	12'	20'		FROM MORGANTON TO BROOK	10/1/2012				S 120,384.00
OLD SPEARS ROAD	0.3	CO	4-13'	14'	30'	DE	OFF BEALS CHAPEL TO DEADEND	10/25/2012			20	S 60,192.00
OLD STAGE ROAD	0.9	CO	2-18'	20'	50'		OFF 11 NEAR DIXIE LEE JUNCTION'	9/1/2011			25	S 182,096.00
OLD STEEKEE RD	0.15	CO	4-14.6'	14.6'	50'		STEEKEE TO STEEKEE RD	9/1/2013				S 30,096.00
OLD SUGAR LIMB ROAD	1.8	SA	2-19'	28'	50'		FROM SUGAR LIMB LOOPS BACK	7/1/2013	2015			S 361,192.00
OLD SWEETWATER CH RD	0.3	CO	1-19'	19'	50'		FROM WASHINGTON PIKE TO CO LINE	8/1/2013				S 60,192.00
OODYROAD	0.4	CO	4-13'	13'	50'		OFF VONORE RD	9/2/2011				S 120,384.00
ORCHARD DR	0.1	CO	1-24'	24'	50'	CURBED	SILO ESTATES SUBDIVISION	8/1/2013				S 20,064.00
OREN WHITE ROAD	0.3	CO	4-11'	11'	30'	DEADEND	FROM CARTERS CHAPEL TO DE	11/7/2011				S 60,192.00
OSPREY COVE COURT E	0.2	CO	1-24'	24'	50'	CURBED-	MILLERS LANDING	3/1/2013				S 40,128.00
OSPREY COVE COURT W	0.1	CO	1-22'	22'	50'	CURBED	MILLERS LANDING	3/1/2013				S 20,064.00
OTTER LANE	0.1	CO	1-24'	24'	50'	CURBED-	MILLERS LANDING	7/1/2013				S 20,064.00
OUTER DRIVE	0.5	CO	1-20'	24'	50'		FROM 321 N NEAR SHAW FERRY/95	7/22/2013			35	S 100,320.00
OVERLOOKLN	0.2	CO	3-14'	14'	30'		00 GRUB OFF OLD95	7/22/2013				S 40,128.00
OWNBY ROAD	0.1	CO	4-13'	13'	20'		FROM NILES FERRY TO BLOUNT	12/22/2011				S 20,064.00
P								7/1/2013				
PALMER DRIVE	0.6	CO	3-14'	15'	30'	DE	OFF LAKELAND BETIKEENERIWILKERSC	10/25/2012				S 120,384.00
PAR DRIVE	0.1	CO	1-24'	24'	50'	CURBED	RIVERVIEW GOLF SUBDIVISION	12/1/2013				S 20,064.00
PARDUE LANE	0.4	CO	4-10'	12'	30'	DE	OFF 11 E ACROSS FROM NEELEY	11/7/2011			20	S 120,384.00
PARKWAY DRIVE	0.3	CO	1-24'	24'	50'	SUB	OFF 321N EATONWOOD SUBDIVISION	8/13/2013			25	S 60,192.00
PARRIS DRIVE	1.7	CO	2-19'	20'	50'		OFF BEALS CHAPEL TO TWIN COVE	10/25/2012				S 341,088.00
PATE ROAD	0.2	CO	4-13'	13'	30'		OFF 321 S NEAR 95 INTERSECTION	12/1/2013				S 40,128.00
PAW PAW PLAINS ROAD	0.8	SA	3-16'	16'	50'		FROM HWY 70 NEAR ROANE CO	12/1/2013			30	S 160,512.00
PEACHTREE STREET	0.1	CO	4-12'	12'	30'		FROM DAILEY AVE TO WEBB DR	12/1/2013				S 20,064.00
PEBBLE COURT	0.045	CO	1-24'	24'	50'	Sub	Stonebrook subdivision HWY 70					S 10,320.00
PEMBROOK COURT	0.1	CO	1-26'	26'	50'	CURB-DE	AVALON SUBDIVISION	12/1/2013				S 20,064.00
PERKLE ROAD	0.6	CO	4-14.5'	14'	30'		FROM FRIENDSVILLE TO MEADOW W	5/30/2012				S 120,384.00
PETERSON ROAD	1.8	CO	2-18.5'	18'	50'		FROM PKWY TO SINKING CREEK	12/28/2011			35	S 361,192.00

ROAD LIST

2016-17

ROAD NAME	LENGTH MILES	COUNTY STATE AID	CLASS & WIDTH	BED WIDTH	RIGHT WAY	CURBED DE	LOCATION OF ROAD	SIGN REPLACE	PAVEMENT	TILE	Speed Limit Approved
						SUBDIVISIO		DATE			
PHELPS ROAD	0.9	CO	2-18'	25'	50'		OFF BEALS CHAPLE TO LAKESIDE	10/25/2012			30 S 180,576.00
PHILLIPS ROAD	0.5	CO	2-18'	18'	50'	DE	OFF HINES VALLEY	11/8/2011			20 S 100,320.00
PICKLE ROAD	0.4	CO	4-14'	21'	30'	DEAD END	OFF HALL RD	12/1/2013			S 120,384.00
PINE GROVE CIRCLE	0.4	CO	1-17'	17'	50'		OFF 95 GREENBACK	9/8/2011	9/1/2011	12/1/2011	S 120,384.00
PINE LANE	0.2	CO	1-24.5'	24'	50'	DE	LEFT OFF LEEPER FERRY IBLOUNT	9/8/2011			S 40,128.00
PINE STREET	0.1	CO	1-20'	20'	50'		FROM DAILEY AVE TO WEBB DR	12/1/2013			S 20,064.00
PINE TOP STREET (G)	0.6	CO	2-18'	18'	50'		HIGHLAND PARK DR TO TWIN LAKES	11/1/2013			S 120,384.00
PINECREST CIRCLE	0.7	CO	2-19'	21'	50'		OFF CUSICK CIRCLE	10/24/2012			25 S 140,446.00
PINEGROVE/PROVIDENCE RD	0.6	SA	1-21'	21'	50'		FROM HOTCHKISS VALLEY TO HINES	10/8/2011	2015		35 S 120,384.00
POINT HARBOUR DRIVE	0.2	CO	1-23'	23'	50'	CURB -DE	OFF PHELPS NEAR BEALS CHAPEL	11/1/2013			S 40,128.00
POND CREEK ROAD	3.9	SA	2-18'	18'	50'		OFF W LEE HWY TO STOCKTON VAL	11/1/2013			35 S 762,432.00
POND ROAD	3.8	CO	3-16'	16'	30'		OFF E LEE NEAR SUGARUMB	10/24/2012			S 762,432.00
POPLAR RIDGE ROAD	0.9	CO	1-24.5'	23'	50'		PWKY TO POPLAR SPRINGS	9/1/2013			30 S 182,096.00
POPLAR SPRINGS ROAD	3.5	CO	1-21'	21'	50'		POPLAR SPRINGS TO DEADEND	9/1/2013	2013		45 S 702,360.00
PORT MADISON DRIVE	0.4	CO	1-20'	20'	50'		FROM E LEE TO RIVER	10/24/2012			S 120,384.00
PORTER LANE	0.1	CO	1-20'	20'	50'	SUBDIVISIO	AMBERLY MEADOWS	9/1/2013			S 20,064.00
PRICE ROAD	0.7	CO	2-19'	25'	50'	DE	OFF HICKORY CREEK	7/8/2011			S 140,446.00
PROSPECT CHURCH ROAD	1.9	SA	1-21'	21'	50'		72 N BACK TO 72N	9/1/2013			35 S 381,256.00
Q											
QUEENER ROAD	0.2	SA	3-17'	17'	50'		RIVER RD TO HWY 72 N	9/1/2013			S 40,128.00
QUILLEN OVERLOOK DRIVE	0.1	CO	3-15'	15'	50'	SUB	OFF SANDY SHORE DR NEAR 321 S	2/1/2013			S 20,064.00
R											
RABY TOWN ROAD	0.4	CO	3-17,'	17'	50'		BETWEEN DAWSON & OAKLAND RD	7/1/2013			S 120,384.00
RANCH ROAD	0.5	CO	1-23'	23'	50'	DE/CURB	OFF STOCKTON VALLEY	7/1/2013			S 100,320.00
RANCHERO DRIVE	0.2	CO	1-21'	21'	50'	CURB-DE	OFF CRESS LN	11/14/2012			S 40,128.00
RAUSIN ROAD	3.4	CO	2-19.6'	19'	50'		FROM W LEE AAT PHILADELPHIA	11/1/2013			30 S 722,424.00
RAWHIDE TRAIL	0.3	CO	1-26'	26'	50'	CURB-DE	FROM FOSTER TO MUDDY CREEK RD	11/14/2012			25 S 60,192.00
RED GROUSE DRIVE	0.4	CO	1-24'	24'	50'	CURB-DE	CONKINNON POINT	11/1/2013			S 120,384.00
RED WOLF WAY	0.049	CO			40'	CURB SUB	WARRIORS CHASE SUBDIVISION HWY 70 Lc				S 9,842.00
REED SPRINGS ROAD	0.6	CO	1-20'	20'	50'		FROM SUNNYSIDE TO MONORE	11/1/2013			S 120,384.00
REEDSP-NGSCHURCHRD	0.7	CO	3-17'	17'	50'		FROM SUNNYSIDE TO MONORE	11/1/2013			20mph S 140,446.00
REST CAMP ROAD	1.5	CO	3-16.5'	16'	30'		FROM ANTIOCH CH E TO UNITIA	8/1/2011	2013		25 S 280,896.00
REX LANE	0.1	CO	4-13'	13'	20'		OFF UNITIA NEAR GILBERT LN	7/8/2011			S 20,064.00
RIDEN ROAD	0.1	CO	2-16.5'	16'	30'	DE	OFF PKWY S OF MORGANTON	7/8/2011			S 20,064.00
RIDGEBARK LANE	0.2	CO	1-24'	24'	50'	SUB	OFF OAKWOOD ESTATE DR	7/1/2013			25 S 40,128.00
RIDGEVIEW DRIVE	0.1	CO	1-24.6'	24.6'	50'	DEAD END	OFF OLD FARM RD TO DE	7/1/2013			S 20,064.00
RIESLING CT	0.1	CO	1-22'	22'		CUR/SUB	VINEYARD COVE SUBDIVISION	8/13/2013			S 20,064.00
RILEY DRIVE	0.7	CO	1-19'	19'	50'		OFF EDITH LN OFF HINES VALLEY	8/1/2011			25 S 140,446.00
RITCHEY RD	1.1	CO	1-20'	20'	50'		From Vonore to Tellico Pky	7/1/2013			30 S 260,832.00
RIVER CHASE ROAD	0.3	CO	1-26'	26'	50'	CURBED-	OFF THURMER CR NEAR BEALS CH	11/14/2012			S 60,192.00
RIVER POINT DRIVE	0.2	CO	1-24'	24'	50'	CURBED-	OFF LAKE COVE	8/1/2013			S 40,128.00
RIVER VIEW DRIVE	1	CO	2-18'	18.5'	50'	CURBED	FROM MAIN ST TO DEAD END	8/1/2011	2013		S 20,064.00
RIVERS EDGE DRIVE	0.3	CO	1-24'	24'	50'	CURBED	OFF RIVERVIEW GOLF DR	8/1/2013			S 20,064.00

ROAD LIST

2016-17

ROAD NAME	LENGTH MILES	COUNTY STATE AID	CLASS & WIDTH	BED WIDTH	RIGHT WAY	CURBED DE	LOCATION OF ROAD	SIGN REPLACE	PAVEMENT	TILE	Speed Limit Approved	
						SUBDIVISIO		DATE				
RIVERVIEW GOLF DRIVE	0.4	CO	1-24'	24'	50'	CURBED	OFF HUFFS FERRY PAST GOLF COR.	9/1/2013				S 120,384.00
RIVERVIEW ROAD	1	CO	4-14'	18'	50'	DE	OFF INDUSTRIAL PK DR TO DE	1/1/1900				S 20,064.00
ROAX ROAD	0.3	CO	2-18'	18'	50'		FROM UNITIA RD TO BLOUNT CO	7/3/2011				S 60,192.00
ROBERSON SPRINGS ROAD	2.7	SA	1-20'	20'	50'		FROM MULBERRY ST TO DRY VALLEY	7/1/2011	4/26/2012			S 476,000.00
ROBERTS CIRCLE	0.4	CO	2-18'	18'	50'		OFF FORD RD	9/1/2013				S 120,384.00
ROBERTS ROAD	0.4	CO	1-24'	24'	50'		OFF STEEKEE NEAR 72	9/1/2013			15/school	S 120,384.00
ROBINSON CIRCLE (LC)	0.7	CO	4-13'	22'	50'		OFF 11 E	10/1/2013				S 140,446.00
ROBINSON DRIVE (LC)	0.1	CO	3-15'	19'	50'		OFF HWY 11 NEAR HIGHLAND PARK	10/24/2012				S 20,064.00
ROBINSON ROAD (LO)	0.4	CO	3-17'	17'	50'	DE	OFF PROSPECT CHURCH NEAR 75	12/1/2013				S 140,446.00
ROCK QUARRY ROAD	0.7	CO	3-15'	19'	50'		OFF E LEE BACK TO E LEE	12/1/2013				S 140,446.00
ROCKY TOP ROAD	0.6	CO	3-17'	21'	30'	DE	OFF DAVIS LN OFF BUTTERMILD	12/1/2013				S 140,446.00
RODNEY ROAD	0.1	CO	2-17'	17'	50'	SUB /DE	OFF SCENIC DR NEAR 321S	12/1/2013				S 20,064.00
ROLLING ACRES DRIVE	0.1	CO	4-13'	23'	50'		OFF OLD 95 NEAR BENJAMIN DR	12/1/2013				S 20,064.00
ROSELAND LN	0.125	CO	1-24'	24'	50'	Sub	OAK CREEK SUBDIVISION					S 25,080.00
ROSS ROAD	1.9	CO	3-16'	16'	50'		OFF STOCKTON VALLEY	12/1/2013			35	S 381,216.00
ROUNDUP LANE	0.1	CO	1-25'	25'	50'	CURB-DE	FROM RAWHIDE TRAIL TO DE	11/14/2012				S 20,064.00
ROY LONAS ROAD	0.4	CO	4-10'	16'	30'		OFF BLUE SPRINGS IMCMINN CO	8/6/2011				S 140,446.00
RURITAN ROAD	0.2	CO	4-13'	13'	30'	DE	FROM HICKORY CREEK TO DE	8/6/2011				S 40,128.00
RUSSELL LANE	0.3	CO	2-19'	20'	50'		OFF HARDIN DR HARDIN ESTATES	10/25/2012				S 60,192.00
RUSSELL ROAD	0.1	CO	2-18'	18'	50'		EASTER DR TO DEAD END	8/13/2013			25	S 20,064.00
S												
SAMPSON BLVD	0.1	CO	1-39'	39'	50'	sub	MAHLON PLACE SUBDIVISION	12/1/2013				S 20,064.00
SANDY SHORE DRIVE	0.6	CO	1-20'	20'	50'	sub	OFF 321 NEAR DAM	12/1/2013				S 140,000.00
SCENIC DRIVE	0.3	CO	2-18'	18'	50'		OFF ALLEN SHORES NEAR DAM	12/1/2013				S 60,192.00
	0.1	CO	1-19'	19'	50'		OFF BUTTER MILK NEAR OLD 95	12/1/2013				
SCENIC VIEW DRIVE	0.3	CO	1-25'	27'	50'	DE	OFF RIVERVIEW DR PAST GOLF	12/1/2013				S 140,000.00
SHAW FERRY LANE	0.6	CO	2-18'	18'	50'		OFF SHAWFERRY RD	10/25/2012				S 140,446.00
SHAW FERRY ROAD	2.5	SA	2-19'	24'	50'		N OF TOWN CREEK TO MARTEL	10/25/2012			35	S 476,000.00
SHAW FERRY ROAD N	1.1	CO	2-18'	18'	50'		FROM 321 FROM BILL SMITH	7/1/2013	2011		25	S 260,832.00
SHEETS HOLLOW ROAD	0.1	CO	2-16'	16'	50'		OFF MEADOW W AC/ BROOK	8/1/2011			30	S 20,064.00
SHELTON GROVE ROAD	0.7	CO	3-17'	17'	50'		FROM BLUE SPRINGS TO ERIE	6/10/2013	2011			S 140,446.00
SHIPLEY LANE	0.3	CO	4-13'	13'	30'		FROM 70 E TO OLD STAGE	10/24/2012			20	S 140,000.00
SHULTS LN	0.4	CO	3-15'	15'	30'		OFF 411 AC FROM NILES FERRY	2/2/2012				S 120,384.00
SILO DRIVE	0.5	CO	1-24'	24'	50'	Sub De	OFF MUDDY CREEK NEAR MARTEL	10/25/2012				S 140,000.00
SILVERLEAF DR	0.288		24'	24'	50'	SUBDIVISIO	OAK CREEK SUBDIVISION					S 57,798.00
SIMMONS ROAD (LO)	0.3	CO	1-20'	20'	50'		E LEE TO WEBB DR	10/24/2012				S 140,000.00
SIMPSON RD Loudon	2.1	CO	1-24'	24'	50'		FROM STEEKEE SCHOOL RD	9/1/2013				S 474,000.00
SIMPSON ROAD (LC)	0.5	CO	2-18'	24'	50'		FROM OLD 95 TO NORTHSIDE DR	8/3/2011			30mph	S 140,000.00
SIMPSON ROAD EAST	0.4	CO	2-19'	20'	50'		321 TO SHAW FERRY	8/3/2011				S 120,384.00
SINKING CREEK ROAD	2.4	CO	1-20'	20'	50'		FROM MORGANTON TO 95	2/14/2012			30	S 476,000.00
SKYVIEW DRIVE	0.3	CO	1-24'	24'	50'	CURBED-	AVOLON SUBD	9/1/2013				S 140,000.00
SLAB TOWN ROAD	0.3	SA	1-21.6'	21'	50'		FROM BLUE SPRINGS TO MCMINN	9/1/2011	2013			S 140,000.00
SMALLEN ROAD	1.1	CO	4-12'	12'	30'		OFF POPLAR SPRINGS RD	12/12/2011			20	S 260,832.00

ROAD LIST

2016-17

ROAD NAME	LENGTH MILES	COUNTY STATE AID	CLASS & WIDTH	BED WIDTH	RIGHT WAY	CURBED DE	LOCATION OF ROAD	SIGN REPLACE	PAVEMENT	TILE	Speed Limit Approved
						SUBDIVISIO		DATE			
SMITH VALLEY ROAD	0.1	CO	4-13'	15'	30'	DE	OFF 70 BET/FORD & THORTON RDS	11/21/2011			\$ 20,064.00
SNOODDERLY ROAD	0.5	CO	2-19'	28'	50'		OFF LOUDON RIDGE TO SUGARLIMB	9/1/2013	2017		\$ 140,000.00
SNOW ROAD	0.3	CO	3-16'	18'	50'		FROM FOREST HEIGHTS TO VIRTUE	10/25/2012			\$ 140,000.00
SPRING ROAD	0.5	CO	1-20'	24'	50'	CURB/SUB	OFF HARRISON OFF OLD 95	7/22/2013			25 \$ 140,000.00
SPRING VIEW ROAD	0.3	CO	1-26'	26'	50'	CURB -DE	OFF BLACKBERRY RIDGE DR	11/14/2012			\$ 140,000.00
STAFFORD ROAD	0.7	CO	4-13'	13'	30'	DE	FROM 72N INTO ROANE	9/1/2013			\$ 140,446.00
STALLCUP ROAD	0.3	CO	2-18'	18'	50'		OFF FORK CREEK INTO MONORE	9/1/2013			\$ 140,000.00
STEEKEE CREEK ROAD	3.4	SA	1-22'	22'	50'		FROM STEEKEE INTO MONORE	7/1/2013			35 \$ 576,000.00
STEEKEE ROAD	4.3	SA	1-25'	25'	50'		FROM GROVE ST TO MONORE	7/1/2013			45/35/15/30 \$ 700,000.00
STEEKEE SCHOOL ROAD	2.2	SA	1-20'	20'	50'		STEEKEE TO VONORE	6/18/2012			30 \$ 476,000.00
STEELE RD	0.3	CO	4-13.6'	13.6'	30'		PINE GROWE CIRCLE	7/1/2011			\$ 140,000.00
STEVENS LANE	0.4	CO	2-15.5'	15'	30'		OFF BROWDER HOLLOW	7/1/2013			\$ 142,000.00
STEVENS ROAD	0.2	CO	3-15'	15'	50'		FROM NILES FERRY TO TRIGONIA	2/2/2012			\$ 140,000.00
STINNETT ROAD	0.3	CO	3-16'	26'	50'		NEAR HIGHLAND PARK SCHOOL	10/24/2012			25 \$ 143,000.00
STOCKTON VALLEY	6.2	SA	1-23'	23'	50'		FROM 72 N TO OAKLAND R	10/1/2012	2015		30/40 \$ 1,564,992.00
STONE HARBOR	0.3	CO	1-25'	25'	50'	Sub	FROM LAKEVIEW TO DE	7/1/2013			\$ 140,000.00
STONEBROOK LANE	0.325	CO	3-24'	24'	50'		Stonebrook subdivision HWY 70				\$ 66,234.00
STRANGE ROAD	0.5	CO	3-16'	18'	50'		OFF 11 E NEAR OLD STAGE	10/24/2012			25 \$ 144,000.00
SUGARWOOD ROAD	0.3	CO	1-21'	30'	50'		OFF SUGARLIMB S OF 75	7/1/2013			\$ 140,000.00
SUMMER GLENN LN	0.2	CO	1-24'	24'	50'	SUB	JAMES RIDGE SUBDIVISION	7/1/2013			\$ 140,000.00
SUMMITT HILL DRIVE	0.3	CO	1-24'	24'	50'	CURBED	YELLOWOOD SUBDIVISION	9/1/2013			\$ 142,000.00
SUNNYSIDE ROAD	2.6	CO	1-20'	20'	50'		W LEE HWY TO RAUSIN RD	9/1/2013		5/1/2014	30/35 \$ 474,000.00
SUNSET BLUFF	0.1	CO	1-24.2'	24'	50'		WINDRIDGE RD TO DE	8/1/2011			\$ 20,064.00
SUNSET DRIVE	0.1	CO	2-18'	18'	50'		OFF CRESCENT DDR E LEE HWY	8/1/2013			\$ 20,064.00
T											
TANGLEWOOD DRIVE	0.9	CO	1-23'	23'	50'	CURB-DE	FROM KNOX LN S OF MARTEL	8/1/2013			\$ 142,000.00
TARWATER ROAD	1.3	O	2-18.5'	18'	50'		OFF 95 S ACROSS FROM PINE GRO	9/8/2014			\$ 374,000.00
TAYLOR DRIVE	0.1	CO	3-16'	18'	50'	DE	OFF 11 E NEAR SHAW FERRY	10/24/2012			\$ 144,000.00
TEETERS ROAD	0.3	CO	4-12'	12'	20'		GREENBACK	9/1/2013			15 \$ 140,000.00
TEN MILE ROAD	0.2	CO	4-14'	20'	30'	DEAD END	OFF MURRAYS CHAPEL IN ERIE	9/1/2013			\$ 140,000.00
THOMPSON BRIDGE ROAD	0.1	SA	1-25'	32'	50'	DE	FROM 411 INTO BLOUNT CO	10/1/2013			\$ 20,064.00
THOMPSON ROAD	0.269	CO	4-13'	13'	20'		OFF JACKSON BEND	7/1/2013			\$ 53,960.00
THORNTON DRIVE	0.5	CO	3-16'	22'	50'	DE	OFF 70 NEAR DIXIE LEE JUNCTION	11/21/2011		7/1/2011	\$ 100,320.00
THURMER CIRCLE	0.2	CO	1-26'	26'	50'	CURB-DE	OFF LAKEVIEW NEAR BEALS CHAPEL	11/14/2012			\$ 40,128.00
TILLEY ROAD	0.6	CO	2-18'	18'	50'		POND CREEK TO DEAD END	11/1/2013			\$ 120,384.00
TIMBER RIDGE DRIVE	0.3	CO	1-24'	24'	50'	Sub/curb	OFF HINES VALLEY (SUBDIVISION)	8/1/2011			\$ 60,192.00
TIMBERLINE DRIVE	0.5	CO	1-26'	26'	50'	CURBED	AVALON SUBD	11/1/2013			\$ 100,320.00
TINNEL LANE	0.2	CO	4-13'	20'	50'		OFF TINNEL RD TO DEAD END	11/1/2013			\$ 40,128.00
TINNEL ROAD	0.4	CO	2-18'	18'	50'		NEAR HIGHLAND PARK SCHOOL	10/24/2012	4/25/2012		\$ 80,256.00
TIVOLE DR	0.4	CO	1-23'	23'	50'		OFF WALLER FERRY	12/1/2013			\$ 80,256.00
TOWN CREEK CIRCLE	0.2	CO	1-20'	20'	50'		OFF MYRES RD NEAR TOWN CREEK	1/0/1900			\$ 40,128.00
TOWN CREEK ROAD E	1.4	SA	1-20'	25'	50'		FROM 321 TO FORD RD	11/21/2011			35 \$ 142,000.00
TOWN CREEK ROAD W	1.4	SA	2-18.6'	24'	50'		FROM 321 TO OLD 95	8/3/2011	2015	7/3/1905	\$ 142,000.00

ROAD LIST

2016-17

ROAD NAME	LENGTH MILES	COUNTY STATE AID	CLASS & WIDTH	BED WIDTH	RIGHT WAY	CURBED DE	LOCATION OF ROAD	SIGN REPLACE	PAVEMENT	TILE	Speed Limit Approved
						SUBDIVISIO		DATE			
TRADES DRIVE	0.1	CO	1-26'	26'	50'		HARRISON HILLS SUBDIVISION	3/1/2013			\$ 20,064.00
TRAIL VIEW DRIVE	0.3	CO	1-22'	22'	50'		FROM CECIL WEBB TO DEAD END	3/1/2013			\$ 60,192.00
TRIGONIA ROAD	0.8	SA	2-18.5'	18'	50'		OFF TRIGONIA TO MONROE	2/2/2012		6/1/2016	20 \$ 160,512.00
TURMAN DRIVE	0.5	CO	1-25'	27'	50'	DE	OFF SHAWFERRY RD	5/1/2013			\$ 100,320.00
TURN LANE ROAD	0.3	CO	3-16'	25'	50'		OFF SIMPSON RD	4/16/2012			\$ 60,192.00
TURNER LANE	0.2	CO	1-25'	25'	50'	CURBED-	OFF COLUMBUS DR	8/1/2011			\$ 40,128.00
TURTLE COVE COURT	0.2	CO	1-24'	24'	50'	CURBED-	LAKECREST DR TO DE MILLERS LAN	5/1/2013			\$ 40,128.00
TWIN COVE CIRCLE	0.5	CO	1-26'	26'	50'	CURBED-	OFF PARRIS DR IN TCOVE SUBDIVISION	9/3/2011			\$ 100,320.00
TWIN COVE DRIVE	0.4	CO	1-26'	26'	50'	CURBED-	TWIN COVES SUBDIVISION	11/14/2012			\$ 80,256.00
TWIN LAKES RD	0.2	CO	1-19'	19'	50'		321 N NEAR HALL RD	6/10/2013			\$ 40,128.00
U											
UNION FORK CREEK CHURCH	1.3	CO	4-13'	13'	30'		HWY 72S TO WADE RD W	5/1/2013			\$ 260,832.00
UNITIA ROAD	2.9	SA	1-20'	20'	50'		FROM HWY 321 S TO BLOUNT CO	10/3/2011			30/35 \$ 581,856.00
V											
VALLEY DALE DRIVE	0.2	CO	1-26'	26'	50'	sub	LITTLE MNT ESTATES	5/1/2013			\$ 40,128.00
VALLEY VIEW DRIVE	0.1	CO	1-26.2'	26'	50'	Sub	AVALON SUBDIVISION	5/1/2013			\$ 20,064.00
VARNER HOLLOW ROAD	0.4	CO	4-12'	12'	30'		OFF STEEKEE RD NEAR CIRCLE DR	5/1/2013			\$ 80,256.00
VAUGHN ROAD	0.4	CO	4-11.5'	11'	20'		OFF UNITIA	8/3/2011			\$ 80,256.00
VAUGHNS CHAPEL ROAD	0.3	CO	1-20'	28'	50'		FROM BROWDER SCHOOL	6/1/2013			\$ 60,192.00
VINEYARD HILLS DR	0.6	CO	1-25'	25'	50'	CURB/SUB	VINEYARD COVE SUBDIVISION	6/1/2012			\$ 100,320.00
VINEYARD ROAD	0.6	CO	2-19'	19'	50'		321S ACROSS FROM 95 N	9/8/2011			\$ 100,320.00
VIRTUE ROAD	0.5	SA	2-18'	20'	50'		OFF MUDDY CREEK TO OLD MIDWAY	10/25/2012			\$ 80,256.00
VONORE ROAD	4.3	SA	1-24'	24'	50'		FROM 72 S TO WATKINS RD	6/1/2012	2013	5/12/2012	40 \$ 842,688.00
W											
WADE LANE	0.3	CO	4-13'	13'	30'	DE	WADE RD TO DEAD END	7/1/2013			\$ 60,192.00
WADE ROAD EAST	0.5	CO	3-16'	16'	50'	DE	OFF 72 S NEAR PKWY	7/8/2011			\$ 100,320.00
WADE ROAD WEST	1.3	CO	3-16'	16'	50'		FROM 72S TO MARKWOOD	7/8/2011	9/1/2015		\$ 142,000.00
WALKERLN	0.3	CO	4-11'	11'	30'	DE	FORM OLD KINGSTON LOOP	7/1/2013			\$ 60,192.00
WALLER FERRY ROAD	1.2	CO	4-14'	14'	50"		FROM WHITE WING TO 321	7/1/2013			35 \$ 100,320.00
WARD ROAD (LC)	0.7	CO	2-19'	19'	50'	DE	OFF HICKORY CREEK	7/9/2011			\$ 100,320.00
WARD ROAD (LO)	0.5	CO	4-12'	12'	30'		OFF WADE RD	7/9/2011	2015		\$ 100,320.00
WARREN COVE LANE	0.13	CO	1-24'	24'	50'			7/5/2016			\$ 26,106.00
WASHINGTON PIKE	4.3	CO	3-17'	17'	50'		FROM PHILADELPHIA TO MONROE	3/7/2012			35 \$ 842,688.00
WATERFORD CR	0.2	CO	1-27'	27'	50'	SUB	AVALON	8/1/2013			\$ 40,128.00
WATKINS ROAD	2.2	SA	1-22'	22'	50'		FROM STEEKEE TO VONORE	6/10/2013			30 \$ 575,000.00
WATSON ROAD	1.4	CO	3-17'	17'	50'		FROM CORINTH TO WATKINS	9/1/2015	2015		\$ 280,896.00
WATT CEMETERY ROAD	2.7	CO	3-17'	17'	50'		FROM DAVIS FERRY TO RITCHEY	8/1/2013			35 \$ 541,728.00
WEBB CIRCLE	0.1	CO	3-17'	17'	50'		OFF 11 W NEAR SUGARLIMB	10/24/2012			\$ 20,064.00
WEBB DRIVE	0.5	CO	1-20'	20'	50'		FROM COX TO PORT MADISON	9/13/2014			\$ 100,320.00
WEDGEWOOD DRIVE	0.4	CO	1-26'	26'	50'	CUR/DE/SU	AVALONSUBD	9/13/2014			\$ 40,128.00
WESCHESTER COURT	0.2	CO	1-26'	26'	50'	CURBED	AVALON SUBD	9/13/2014			\$ 60,192.00
WESLEY ROAD	0.3	CO	2-19'	23'	50'		OFF HARDIN DR HARDIN ESTATES	10/25/2012			25 \$ 60,192.00
WEST FORK ROAD	0.4	CO	2-19'	19'	50'		OFF 72 S ACROSS BRIDGE S OF PKY	6/10/2013			\$ 80,256.00

2016-17

17 of 54

RESOLUTION

A RESOLUTION AMENDING THE ZONING MAP OF LOUDON COUNTY, TENNESSEE, PURSUANT TO CHAPTER SEVEN, §13-7-105 OF THE TENNESSEE CODE ANNOTATED, TO REZONE APPROXIMATELY 2 ACRES FROM O-1 (OFFICE PROFESSIONAL DISTRICT) TO A-2 (RURAL RESIDENTIAL DISTRICT) REFERENCED BY TAX MAP 049, PARCEL 039.00 CLEAR BRANCH ROAD, LOUDON, TN, SITUATED IN THE 1ST LEGISLATIVE DISTRICT

WHEREAS, the Loudon County Commission, in accordance with Chapter Seven, §13-7-105 of the Tennessee Code Annotated, may from time to time, amend the number, shape, boundary, area or any regulation of or within any district or districts, or any other provision of any zoning resolution, and

WHEREAS, the Regional Planning Commission has forwarded a recommendation regarding the amendment to the Zoning Map of Loudon County, Tennessee,

WHEREAS, a notice of public hearing and a description of the resolution appeared in the Loudon County News Herald on November 15, 2017 consistent with the provisions of Tennessee Code Annotated, §13-7-105, and

NOW, THEREFORE, BE IT RESOLVED by the Loudon County Commission that the Zoning Map of Loudon County, Tennessee be amended as follows:

Located on Clear Branch Road, Loudon, TN situated in the 1st Legislative District, referenced by Tax Map 049, Parcel 039.00, be rezoned from O-1, (Office Professional District) to A-2 (Rural Residential District) as shown on the attached illustration; said illustration being part of this Resolution.

BE IT FINALLY RESOLVED, that this Resolution shall take effect immediately, the public welfare requiring it.

ATTEST:

LOUDON COUNTY CHAIRMAN

DATE: _____

APPROVED: LOUDON COUNTY MAYOR

The votes on the question of approval of this Resolution by the Planning Commission are as follows:

APPROVED: _____

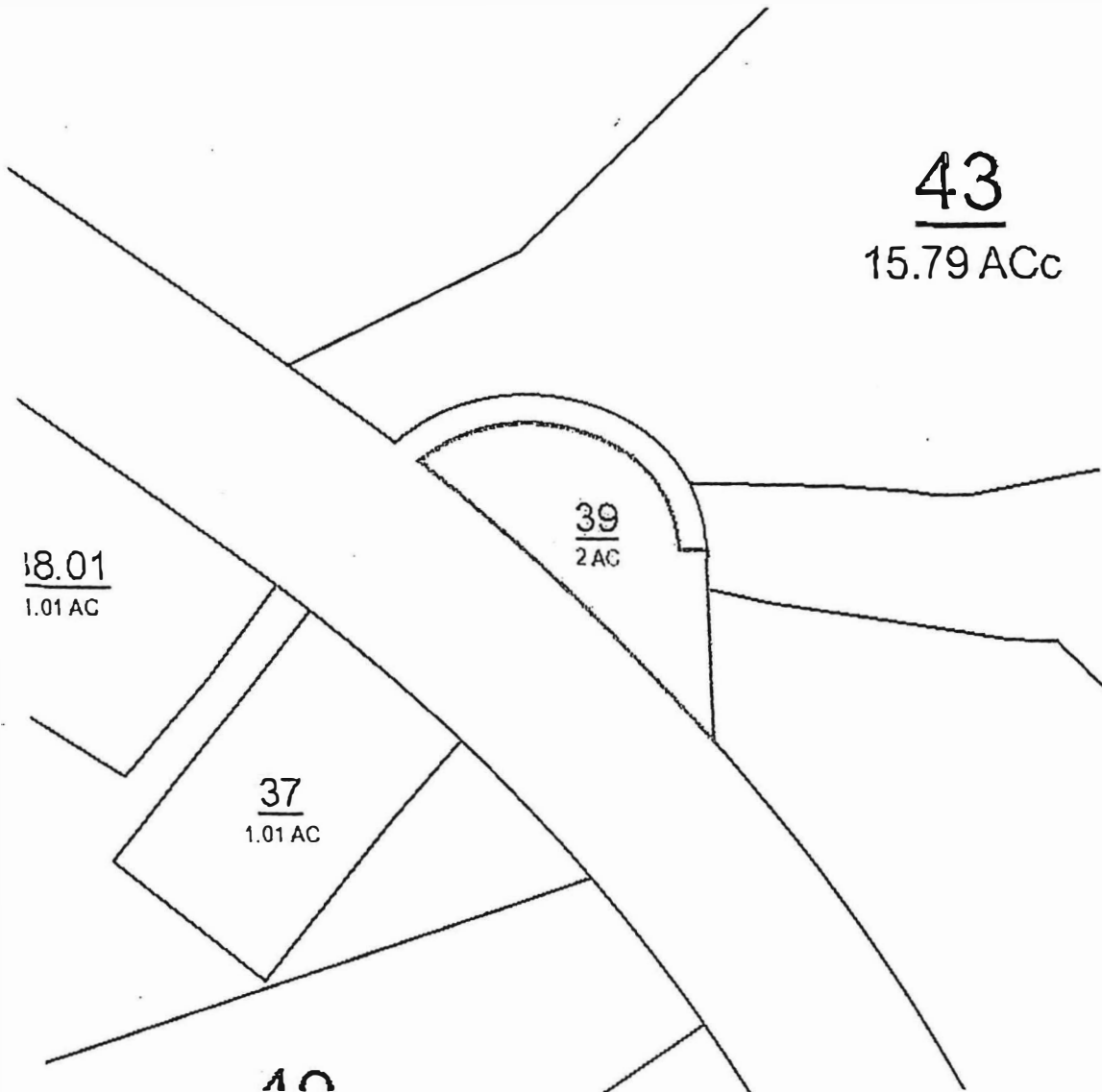
DISAPPROVED: _____



**ATTEST: SECRETARY LOUDON COUNTY
REGIONAL PLANNING COMMISSION**
Dated: October 17, 2017

Map Attachment for Resolution 010218-

REZONE APPROXIMATELY 2 ACRES FROM O-1 (OFFICE PROFESSIONAL DISTRICT) TO A-2 (RURAL RESIDENTIAL DISTRICT) REFERENCED BY:
TAX MAP 049, PARCEL 039.00, LOCATED CLEAR BRANCH ROAD,
LOUDON, TN, SITUATED IN THE 1ST LEGISLATIVE DISTRICT



Owner: SNYDER SIDNEY ETAL
Address: CLEAR BR ANCH R D
Parcel Number: 049 039.00
Deeded Acreage: 2

LOUDON COUNTY COMMISSION

Exhibit 010218-

**LOUDON COUNTY CLERK
DARLENE M. RUSSELL, COUNTY CLERK
101 MULBERRY ST., SUITE 200
LOUDON, TN 37774
TELEPHONE: 865-458-3314
FAX: 865-458-9891**

Notaries & Bonds to be elected January 02, 2018

Michelle Coggins

Sara Tallant

Wanda Johnson

James R. Thomason

Ann R. Petitt (Bond)

Barbara A. White (Bond)

Angela Vance Rogers