

LOUDON COUNTY COMMISSION WORKSHOP

Monday, May 24, 2010

Loudon County Courthouse Annex Building

9:00 am

1. This is the time for audience members to speak on items on or not on the Agenda.
2. **Loudon County Planning and Codes Director - Russ Newman**
 - a. A Resolution Amending the Zoning Map of Loudon County, Tennessee, Pursuant to Chapter Seven, §13-7-105 of the Tennessee Code Annotated, to Rezone Approximately 1 acre from C-2 (General Commercial) to R-1 (Suburban Residential). Referenced Tax Map 25, Part of Parcel 225.00 Located on Highway 11 West, 5th Legislative District.
 - b. Update on status of resolving TDEC's notification to the County of Storm Water Run-Off Ordinance Violations.
3. **Loudon County Mayor - Doyle Arp**
 - a. Appointments to the following Boards/Committees:
 1. Board of Zoning Appeals
 2. Hospital Advisory Board
 3. Library Board (County)
 4. Library Board (Regional)
 5. Planning Commission (RPC)
 6. TASS Board of Directors (Loudon County)
4. **Economic Development Agency Director - Pat Phillips**
 - a. Consideration of Approving a Fastrack Infrastructure Development Program Resolution for a Grant to serve Tennessee Packaging.
 - b. Consideration of Approving a Resolution authorizing the County Mayor to enter into an agreement with Tennessee Packaging on contributing funds for local match for a State ECD Grant for infrastructure and site work at Highlands Business Park for location of new manufacturing and corporate office facilities.
5. **Loudon County Mayor - Doyle Arp/Loudon County Budget Director - Tracy Blair**
 - a. 2011-2012 Budget
6. Any other items.

RESOLUTION

A RESOLUTION AMENDING THE ZONING MAP OF LOUDON COUNTY, TENNESSEE, PURSUANT TO CHAPTER SEVEN, §13-7-105 OF THE TENNESSEE CODE ANNOTATED, to Rezone Approximately 1 acre from C-2 (General Commercial) to R-1 (Suburban Residential). Referenced Tax Map 25, Part of Parcel 225.00 Located on Highway 11 West, 5th Legislative District.

WHEREAS, the Loudon County Commission, in accordance with Chapter Seven, §13-7-105 of the Tennessee Code Annotated, may from time to time, amend the number, shape, boundary, area or any regulation of or within any district or districts, or any other provision of any zoning resolution, and

WHEREAS, the Regional Planning Commission has forwarded a recommendation regarding the amendment to the Zoning Map of Loudon County, Tennessee,

WHEREAS, a notice of public hearing and a description of the resolution appeared in the Loudon County News Herald on April 28-29 2010 consistent with the provisions of Tennessee Code Annotated, §13-7-105,

NOW, THEREFORE, BE IT RESOLVED by the Loudon County Commission that the Zoning Map of Loudon County, Tennessee be amended as follows:

Located on Highway 11 West, situated in the 5th Legislative District, referenced by Tax Map 25, Part of Parcel 225.00 be rezoned from C-2, General Commercial District to R-1, Suburban Residential District, as shown on the attached map; said map being part of this Resolution.

BE IT FINALLY RESOLVED, that this Resolution shall take effect immediately, the public welfare requiring it.

ATTEST


LOUDON COUNTY CHAIRMAN
DATE: _____

APPROVED: LOUDON COUNTY MAYOR

The votes on the question of approval of this Resolution by the Planning Commission are as follows:

APPROVED: 11

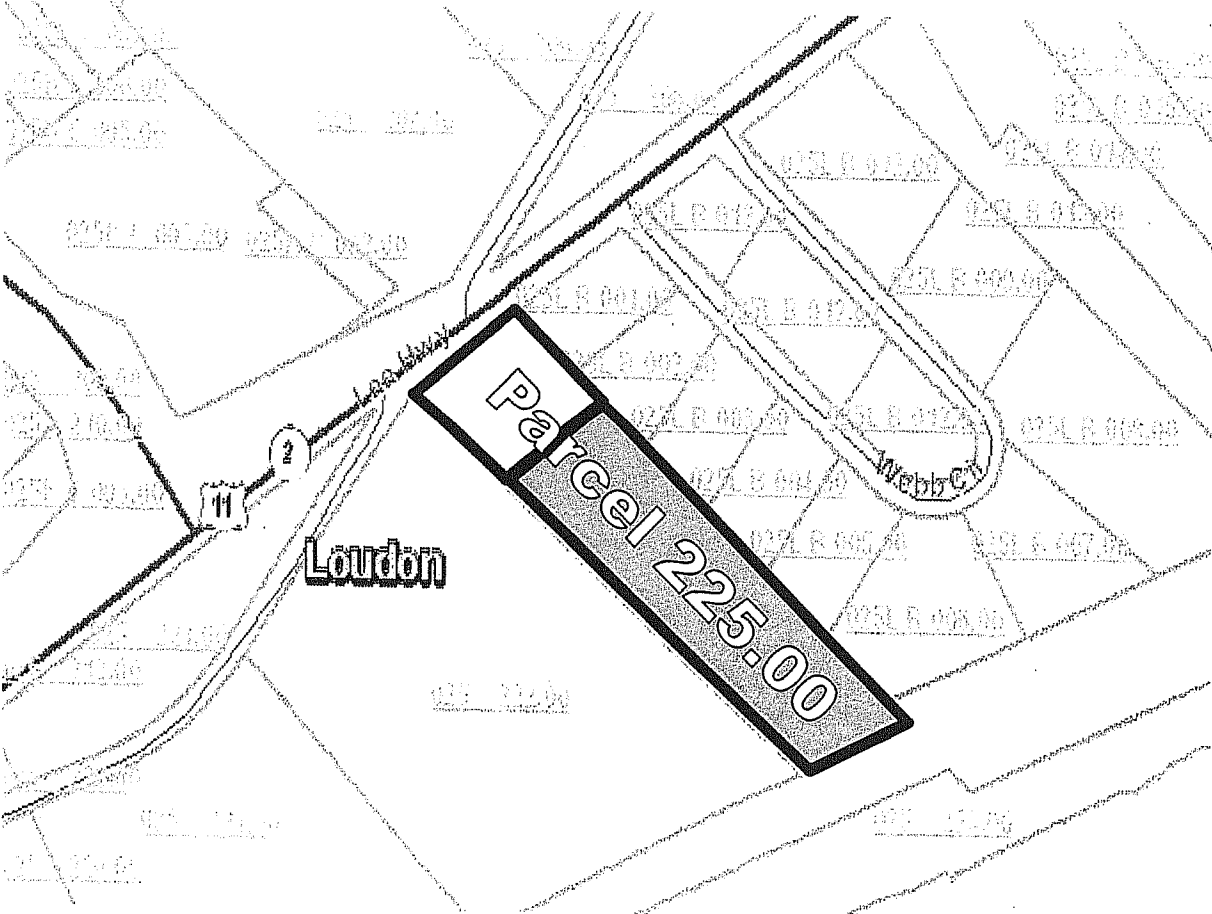
DISAPPROVED: 0



ATTEST: SECRETARY LOUDON COUNTY
REGIONAL PLANNING COMMISSION
Dated: April 20, 2010

FILE # [10-03-19-RZ-LO]

Rezone approximately 1 acres from C-2 (General Commercial) to R-1 (Suburban Residential). Referenced Tax Map 25, Part of Parcel 225.00 Located on Highway 11 West 5th Legislative District.



LOUDON COUNTY COMMISSION

RESOLUTION 060710

**RESOLUTION APPROVING OR ACKNOWLEDGING BOARD OR
COMMITTEE APPOINTMENT BY COUNTY MAYOR**

WHEREAS, by statute, and/or intergovernmental agreement and/or County Procedural Regulations, the County Mayor has authority to make certain committee and board appointments; and

WHEREAS, appointments are necessary and/or desirable at this time; and

WHEREAS, the County Mayor appoints the following as members of

Loudon County Hospital Advisory Board

<u>Appointee</u>			<u>Term Expiration</u>
Dr. Jim Cleveland	1 st Panel	1 yr. Term	January 2011
Betty Carroll	1 st Panel	1 yr. Term	January 2011
Bob Wright	1 st Panel	1 yr. Term	January 2011
Harvey Sproul	1 st Panel	1 yr. Term	January 2011
Bo Carey	2 nd Panel	2 yr. Term	January 2012
Nancy Beaty	2 nd Panel	2 yr. Term	January 2012
Jim Condra	2 nd Panel	2 yr. Term	January 2012
Kathy Knight	2 nd Panel	2 yr. Term	January 2012
Bud Guider	3 rd Panel	3 yr. Term	January 2013
George Miller	3 rd Panel	3 yr. Term	January 2013
Sam Buscetta	3 rd Panel	3 yr. Term	January 2013
Jeffrey Feike, Ex-Officio	3 rd Panel	3 yr. Term	January 2013

NOW, THEREFORE, BE IT RESOLVED that the Loudon County Commission, meeting in regular session assembled this 7th day of June, 2010, hereby approves or acknowledges (as appropriate), the said appointments.

COUNTY CHAIRMAN

ATTEST:

COUNTY CLERK

COUNTY MAYOR

LOUDON COUNTY COMMISSION

RESOLUTION 060710-

**RESOLUTION APPROVING OR ACKNOWLEDGING BOARD OR
COMMITTEE APPOINTMENT BY COUNTY MAYOR**

WHEREAS, by statute, and/or intergovernmental agreement and/or County Procedural Regulations, the County Mayor has authority to make certain committee and board appointments; and

WHEREAS, appointments are necessary and/or desirable at this time; and

WHEREAS, the County Mayor appoints the following as members of the

LOUDON COUNTY LIBRARY BOARD

<u>Appointee</u>		<u>Term Expiration</u>
David Hall	Greenback	June 30, 2013
Ruth Henderson McQueen	Philadelphia	June 30, 2013

NOW, THEREFORE, BE IT RESOLVED that the Loudon County Commission, meeting in regular session assembled this 7th day of June, 2010 hereby approves or acknowledges (as appropriate), the said appointments.

COUNTY CHAIRMAN

ATTEST:

COUNTY CLERK

COUNTY MAYOR

The remaining members and their continuing expiration terms for said board or committee are as follows:

<u>Appointee</u>		<u>Term Expiration</u>
Elfriede Bealle	Lenoir City	June 30, 2011
Georgia Burchfield	Loudon	June 30, 2011
Tim Grindstaff	Lenoir City	June 30, 2012
Jean Cardwell	Loudon	June 30, 2012
Ginny Strandberg	Tellico Village	June 30, 2012

LOUDON COUNTY COMMISSION

RESOLUTION 060710-

**RESOLUTION APPROVING OR ACKNOWLEDGING BOARD OR
COMMITTEE APPOINTMENT BY COUNTY MAYOR**

WHEREAS, by statute, and/or intergovernmental agreement and/or County Procedural Regulations, the County Mayor has authority to make certain committee and board appointments; and

WHEREAS, an appointment is necessary at this time; and

WHEREAS, the County Mayor appoints the following as a member of the

REGIONAL LIBRARY BOARD

Appointee

Tammy Reynolds
Elfriede Bealle

Term Expiration

June 30, 2012
June 30, 2013

NOW, THEREFORE, BE IT RESOLVED that the Loudon County Commission, meeting in regular session assembled this 7th day of June 2010 hereby approves and acknowledges (as appropriate), the said appointment.

COUNTY CHAIRMAN

ATTEST:

COUNTY CLERK

COUNTY MAYOR

LOUDON COUNTY COMMISSION

RESOLUTION 060710

**RESOLUTION APPROVING OR ACKNOWLEDGING BOARD OR
COMMITTEE APPOINTMENT BY COUNTY MAYOR**

WHEREAS, by statute, and/or intergovernmental agreement and/or County Procedural Regulations, the County Mayor has authority to make certain committee and board appointments; and

WHEREAS, an appointments are necessary and desirable at this time; and

WHEREAS, the County Mayor appoints the following as members of

**LOUDON COUNTY
REGIONAL PLANNING COMMISSION**

<u>Appointee</u>	<u>Term Expiration</u>
John Napier (1 st District - Slot B)	June 30, 2014
Janice Terry (2 nd District – Slot A)	June 30, 2014

NOW, THEREFORE, BE IT RESOLVED that the County Commission meeting in regular session assembled this 7th day of June, 2010 hereby approves and acknowledges (as appropriate), the said appointments.

COUNTY CHAIRMAN

ATTEST:

COUNTY CLERK

COUNTY MAYOR

The remaining members and their continuing expiration terms for said board or committee are as follows:

<u>Appointee</u>	<u>Term Expiration</u>
Barbara J. Cardwell (2 nd District – Slot B)	June 30, 2011
Howard Luttrell (6 th District)	June 30, 2011
Pam McNew (1 st District – Slot A)	June 30, 2012
Roger Hale (5 th District – Slot A)	June 30, 2012
Martin Brown (5 th District –Slot B)	June 30, 2013
Roy Brooks (3 rd District)	June 30, 2013
Carlie McEachern (LRPC)	Co-term
Monty Ross (LPC)	Co-term

LOUDON COUNTY COMMISSION

RESOLUTION 060710-

**RESOLUTION APPROVING OR ACKNOWLEDGING BOARD OR
COMMITTEE APPOINTMENT BY COUNTY MAYOR**

WHEREAS, by statute, and/or intergovernmental agreement and/or County Procedural Regulations, the County Mayor has authority to make certain committee and board appointments; and

WHEREAS, an appointment is necessary and desirable at this time; and

WHEREAS, the County Mayor appoints the following as a member of

TELLICO AREA SERVICE SYSTEM

Appointee
Kenneth Dutton

Term Expiration
June 30, 2013

NOW, THEREFORE, BE IT RESOLVED that the County Commission in regular session assembled this 7th day of June 2010 hereby approves and acknowledges (as appropriate), the said appointment.

COUNTY CHAIRMAN

ATTEST:

COUNTY CLERK

COUNTY MAYOR

The remaining members and their continuing expiration terms for said board or committee are as follows:

Appointee
Fred Brewster
Roy Goddard

Term Expiration
June 30, 2012
June 30, 2011

LOUDON COUNTY COMMISSION

RESOLUTION 060710

**RESOLUTION APPROVING OR ACKNOWLEDGING BOARD OR
COMMITTEE APPOINTMENT BY COUNTY MAYOR**

WHEREAS, by statute, and/or intergovernmental agreement and/or County Procedural Regulations, the County Mayor has authority to make certain committee and board appointments; and

WHEREAS, an appointment is necessary and desirable at this time; and

WHEREAS, the County Mayor appoints the following as a member of

**LOUDON COUNTY
BOARD OF ZONING APPEALS**

<u>Appointee</u>	<u>Term Expiration</u>
Roy Brooks (3 rd District)	June 30, 2012
Martin Brown (5 th District)	June 30, 2012

NOW, THEREFORE, BE IT RESOLVED that the County Commission meeting in regular session assembled this 7th day of June, 2010 hereby approves and acknowledges (as appropriate), the said appointment.

COUNTY CHAIRMAN

ATTEST:

COUNTY CLERK

COUNTY MAYOR

The remaining members and their continuing expiration terms for said board or committee are as follows:

<u>Appointee</u>	<u>Term Expiration</u>
Carlie McEachern(1 st District)	June 30, 2011
Janice Terry (2 nd District)	June 30, 2011