

LOUDON COUNTY COMMISSION WORKSHOP

Monday, August 21, 2017

Loudon County Annex

6 PM

- 1. Bridge Update – Presentation by Tennessee Department of Transportation.**

- 2. Laura Smith, Director of Planning**
 - A. A Resolution Amending the Zoning Map of Loudon County, Tennessee, Pursuant to Chapter Seven, 13-7-105 of The Tennessee Code Annotated, To Rezone Approximately 5.5 Acres From O-1 (Office Professional District) To A-2 (Rural Residential District), Loudon County Tax Map 058, Parcel 094.00, Located at 15140 Watt Cemetery Road, Loudon , TN, Situated in The1st Legislative District.**

- 3. Discussion of Poplar Springs Landfill.**

- 4. Adjournment**

RESOLUTION _____

A RESOLUTION AMENDING THE ZONING MAP OF LOUDON COUNTY, TENNESSEE, PURSUANT TO CHAPTER SEVEN, §13-7-105 OF THE TENNESSEE CODE ANNOTATED, TO REZONE APPROXIMATELY 5.5 ACRES FROM O-1 (OFFICE PROFESSIONAL DISTRICT) TO A-2 (RURAL RESIDENTIAL DISTRICT), LOUDON COUNTY TAX MAP 058, PARCEL 094.00, LOCATED AT 15140 WATT CEMETERY ROAD, LOUDON, TN, SITUATED IN THE 1ST LEGISLATIVE DISTRICT

WHEREAS, the Loudon County Commission, in accordance with Chapter Seven, §13-7-105 of the Tennessee Code Annotated, may from time to time, amend the number, shape, boundary, area or any regulation of or within any district or districts, or any other provision of any zoning resolution, and

WHEREAS, the Regional Planning Commission has forwarded a recommendation regarding the amendment to the Zoning Map of Loudon County, Tennessee,

WHEREAS, a notice of public hearing and a description of the resolution appeared in the Loudon County newspaper, the News Herald on _____ consistent with the provisions of Tennessee Code Annotated, §13-7-105, and

NOW, THEREFORE, BE IT RESOLVED by the Loudon County Commission that the Zoning Map of Loudon County, Tennessee be amended as follows:

Located at 15140 Watt Cemetery Road situated in the 1st Legislative District, referenced by Tax Map 058, Parcel 094.00 be rezoned from O-1 (Office Professional District) to A-2 (Rural Residential District) as shown on the attached map; said map being part of this Resolution.

BE IT FINALLY RESOLVED, that this Resolution shall take effect immediately, the public welfare requiring it.

ATTEST

LOUDON COUNTY CHAIRMAN

DATE: _____

APPROVED: LOUDON COUNTY MAYOR

The votes on the question of approval of this Resolution by the Planning Commission are as follows:

APPROVED: _____

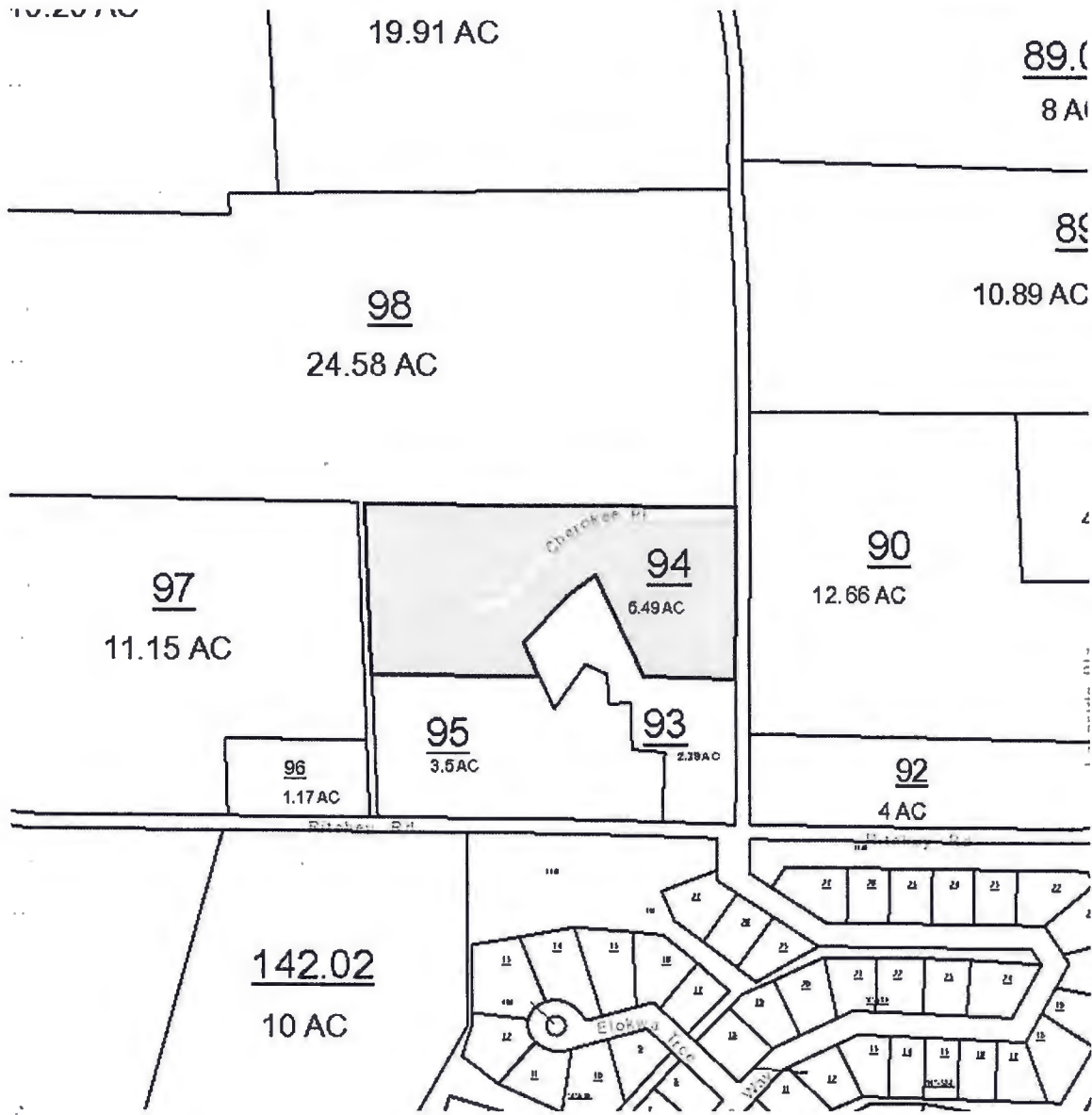
DISAPPROVED: _____



ATTEST: SECRETARY LOUDON COUNTY
REGIONAL PLANNING COMMISSION
Dated: June 20, 2017

ATTACHMENT TO RESOLUTION _____

REZONE APPROXIMATELY 5.5 ACRES FROM O-1 (OFFICE PROFESSIONAL DISTRICT TO A-2 (RURAL RESIDENTIAL DISTRICT). REFERENCED BY: TAX MAP 058, PARCEL 094.00 LOCATED AT 15140 WATT CEMETERY ROAD, SITUATED IN THE 1ST LEGISLATIVE DISTRICT



LOUDON COUNTY COMMISSION
SPECIAL CALLED MEETING
IMMEDIATELY FOLLOWING THE WORKSHOP
Monday, August 21, 2017

- 1. Discussion Concerning Poplar Springs Landfill.**