

# **LOUDON COUNTY COMMISSION WORKSHOP**

Monday June 20, 2016  
County Office Building  
6:00 pm

- 1. Comments by Members of the General Public**
  
- 2. Economic Development Agency Director, Pat Phillips**
  - A. A Resolution of the Loudon County Commission, the Governing Body of the County of Loudon, Tennessee Authorizing the sale of certain property in Sugarlimb Industrial Park to Del Conca USA.
  
  - B. A Resolution of the Loudon County Commission, the Governing Body of the County of Loudon, Tennessee Authorizing the sale of certain property in Sugarlimb Industrial Park to Restoration Services Inc.
  
- 3. Loudon County Mayor, Buddy Bradshaw**
  - A. Five Points Safe Harbor Resolution regarding the Affordable Care Act.
  
- 4. Loudon County Budget Director, Tracy Blair**
  - A. Budget Committee Recommendations.
  
- 5. Any other items**
  
- 6. Adjournment**

**Resolution No. \_\_\_\_\_**

**A RESOLUTION OF THE COUNTY OF LOUDON, TENNESSEE AUTHORIZING THE SALE  
OF CERTAIN PROPERTY IN SUGARLIMB INDUSTRIAL PARK TO DEL CONCA USA**

WHEREAS, Del Conca USA is investing approximately \$30,000,000 in facilities and equipment to expand operations at the Loudon facility and increasing employment by an additional 40 employees; and

WHEREAS, Company requires additional property to accommodate the expansion; and

WHEREAS, the Loudon County Economic Development Agency Board of Directors recommends the sale of approximately 2.0 acres +/- of property adjacent to Del Conca USA's property at a purchase price of \$15,000/acre; and

NOW, THEREFORE, BE IT RESOLVED, that the Loudon County Commission hereby approves the sale of property (generally reference by the attached map) to Del Conca USA at \$15,000/acre with the actual acreage to be determined by a boundary survey.

Be, It, Further Resolved, that the Loudon County Commission authorizes the Mayor to sign all necessary documents relating to the sale of said property.

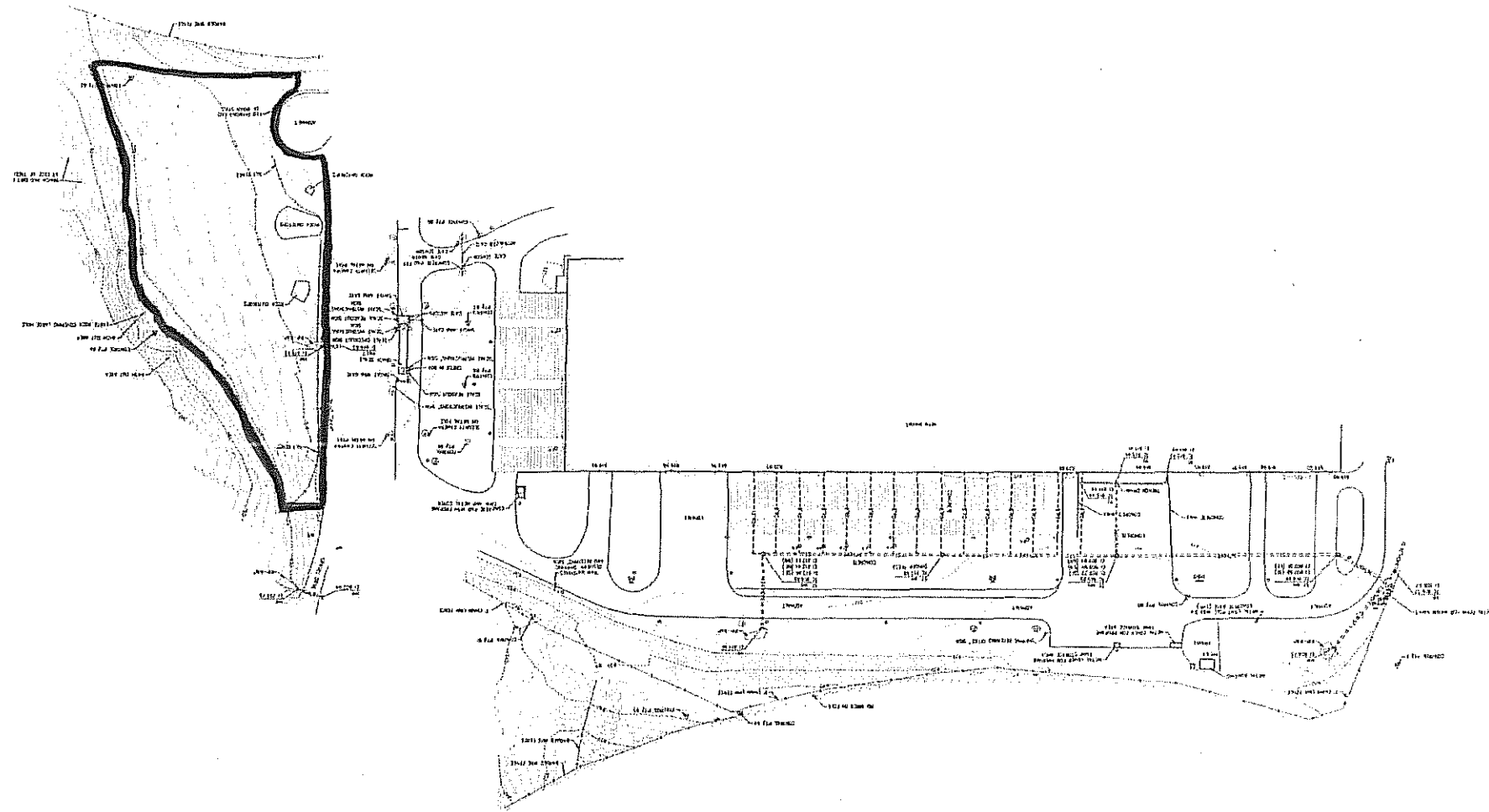
Be It Finally Resolved, that this Resolution shall take effect immediately the public welfare requiring it.

Passed this the 27<sup>th</sup> Day of June, 2016

\_\_\_\_\_  
Buddy Bradshaw, Mayor

\_\_\_\_\_  
Darlene Russell, County Court Clerk

\_\_\_\_\_  
Steve Harrelson, Chair



RESOLUTION No. \_\_\_\_\_

**A RESOLUTION OF THE LOUDON COUNTY COMMISSION APPROVING  
THE SALE OF CERTAIN PROPERTY IN SUGARLIMB INDUSTRIAL PARK  
TO RESTORATION SERVICES, INC.**

Whereas, Loudon County and the City of Loudon jointly own certain real property in Sugarlimb Industrial Park; and

Whereas, Restoration Services, Inc. has identified an alternative site north of Del Conca USA, to construct a proposed 1 megawatt (MW) solar project, said property being approximately 8 acres+/- and previously used as spoil area for site development associated with Del Conca's initial project; and

Whereas, the Loudon County Economic Development Agency Board of Directors and Sugarlimb Industrial Park Committee have recommended the project for the stated use; and

Whereas, said property being located north of Del Conca and bounded by Norfolk Southern rail spur and property of Noverhed, being a portion of Loudon County Tax Map 33, Parcel 5.0, and more fully described on the attached map (Exhibit A).

Whereas, said property is not developable for building purposes since the nature of the fill material placed on the property is not suitable for compaction and has limited residual use.

Now, Therefore, **Be It Resolved**, that the Loudon County Commission does hereby approve the sale of approximately 8 acres +/- to Restoration Services Inc., of Oak Ridge, Tennessee, for a price of \$7,500/acre, said property being further described on attached Exhibit A with the specific size being determined by professional survey.

**Be It, Further Resolved**, that the County Mayor is authorized to sign all legal documents relative to the transfer of said property.

**Be It Finally Resolved**, that this Resolution shall take effect immediately, the public welfare requiring it.

Date Adopted: June 27, 2016

\_\_\_\_\_  
Buddy Bradshaw, Mayor

\_\_\_\_\_  
Steve Harrelson, Chair

\_\_\_\_\_  
Darlene Russell, County Court Clerk

Alternative Site for RSI  
Sugarloaf Industrial Park - 8.4 Acres

Exhibit "A"

